

Kemp Development SMART **Academies**

(Science, Mathematics, the Arts, Reading & Technology)

A 21st Century Community Learning
Centers Project

Presented by

Reverend Willie Farrow and Mr Errol Wilson FAMU

Kemp Development Group

- Kemp Development Group is a collaborative effort between the faith-based, education and business communities to develop and inspire young people to succeed in a global economy.
- Kemp Development Group provides business education and mentorships to introduce students to basic business principles, entrepreneurship and their potential impact on the business community. Participants attend weekly classes to learn sound work habits and practice decision-making, time management and interviewing skills, develop career plans, programs of study and goal setting.

Kemp Development Group

- In the state of Florida, 30 percent of 9th graders will not finish high school, leaving a vacuum for future growth of area businesses. This projection leaves the employer at a critical disadvantage for qualified worker in the next 4 to 5 years. However, this statistics show that that employees involved in structured training programs are less likely to turnover as quickly as those receiving no structuring training.

Kemp Development Group

Training Methods

- Business Ethics
- Start Up Principles
- Business Structures
- Verbal and Written Communication Skills
- Understanding Government and Business
- Business Plans
- Marketing and Sales Strategies
- Customer Services
- Checking and Savings Accounts
- Human Resources
- Time Management
- Stress Management
- Dress For Success

Internships

- Manufacturing
- Insurance
- Construction
- Screen Printing
- Radio and Broadcast Communications
- Marketing and Advertising
- Childcare Development
- Administrative Services
- Hospital Management
- Banking
- Medical
- Bookkeeping and Accounting

Florida's 21st Century Community Learning Centers

- Ensure that *No Child is Left Behind*
- Expand school day through before/after school activities
- Offer academic enrichment
- Engage students and families

Kemp Development Group Training Methodology

- Group Sessions
- E-Learning
- Internships
- Special Project on a Contractual Basis
- Employment Placement
- College Funding (Grants and Loans)
- Business Incubators
- Business Mentorships
- Community Services
- Create Skill Banks

Placement Methods

- **Contract Staffing**
- **Temp—to—Direct Hiring**
- **1099 Conversions**
- **Pay Rolling**
- **Retiree Re-Staffing**
- **Internships / Summer Employees**

Project Overview

- Increase the number of at-risk students graduating from high school
- Improve the academic performance of at-risk students in science, math, reading and technology
- Facilitate college admission and enrollment in education programs
- Advance graduation rate through technical education and STEM Schools
- Promote Educational Certification Programs

Target Population

- Students, grades 7-12, enrolled at FAMU Developmental Research School (DRS)
- Students scoring below Level 3 on reading, math and/or science (FCAT 2008)
- Students with Disabilities (ESE)
- English Language Learners (ELL)
- Enrollment: 200

Proposed Program

- Project-based activities
- Homework assistance
- Academic tutoring
- Field experiences
- Resource speakers
- Parent involvement activities
- Research-proven curricula
- Physical Education/Recreation
- Career shadowing
- Academy Celebrations
- Consultants to conduct trainings

Curricular Materials

- Science: TechYes Science
- Mathematics: Curriculum Associates, Florida Strategy Specific Math
- Reading: SRA McGraw Hill Reading Intervention Kits; Curriculum Associates, Academic Workout Kits
- Technology: TechYes Literacy
- Brainchild Learning: Study Buddies (remediation tool): reading and mathematics

Regular Afterschool Schedule

	Monday	Tuesday	Wednesday	Thursday
3:15 – 3:50	Homework assistance (Tutoring) & Snack	Homework assistance (Tutoring) & Snack	Homework assistance (Tutoring) & Snack	Homework assistance (Tutoring) & Snack
3:55-4:35	Science* through direct instruction	Science* through investigations	Science* through exploration	Science* through presentations
4:40-5:20	Health/Wellness	Health/Wellness	Health/Wellness	Health/Wellness
5:25-5:55	STEM Studies and Character Development	Enrichment (The Arts & Character Ed)	STEM Studies and Character Development	STEM Studies and Character Development
6:00-6:15	Dismissal	Dismissal	Dismissal	Dismissal

Saturday

9:00-10:00	Participant Presentation of Projects (by grade group)
10:05-11:05	Intergenerational Activities (Sports: Team & Lifetime)
11:10-12:10	Brunch and Books
12:15-12:45	Parent Trainings/Motivational Speaker for student participants (concurrent)
12:45-1:00	Data collection (completion of survey)

Summer Schedule

	Monday	Tuesday	Wednesday	Thursday
8:00-8:30	Breakfast	Breakfast	Breakfast	Breakfast
8:30-9:30	Art	Culinary Arts	Book Clubs	Field Experiences*
9:35-10:35	SAT/ACT/FCAT Prep	SAT/ACT/FCAT Prep	SAT/ACT/FCAT Prep	
10:40-11:40	Career Exploration**	Career Exploration	Career Exploration	
11:45-12:45	Character Ed	Character Ed	Character Ed	
12:50-1:50	Music	Dance	Personal Fitness	
1:50-2:00	Dismissal	Dismissal	Dismissal	Dismissal

Parental Involvement

Different Levels Of Parental Involvement “*DLOPI*”

Research-based



Copyright 1997, Revised 2009

Parental Involvement Goals

- Parent participation will be encouraged through **the (5) models of DLOPI (attendance/responsibilities, communication/support, literacy/tutorial, volunteering/mentoring & leadership/partnership)**
- Parents will be provided resources continuously to assist their child in the SMART Academies program and in their school (**health, workforce, career opportunities and training, nutrition, health, faith-based, community & academic resources**)
- Parent resources will be provided to encourage promoting their child's literacy skills and a love for reading
- Parents and stakeholders will be surveyed, evaluated and invited to student **ACADEMY CELEBRATIONS**

Service-Learning Activity

- Campaign to Increase Awareness of
- Community Homelessness and Poverty
- Research needs of homeless population/missions that serve them
- Create project boards and fact sheets that inform community of needs
- Host clothes & food drives
- Create Public Service Announcements to share research
- Partner with local faith-based organizations to distribute collections
- Present Holiday Baskets to local shelters and/or serve at community kitchens

Schedule

- Monday – Thursday (3:15 pm – 6:15 pm) regular afterschool
- Saturday (9:00 am – 1:00 pm) regular afterschool
- Monday – Thursday (8:00 am – 2:00 pm) 4-week summer program
- Thursday is reserved for field experiences & and career shadowing
- Program Date – October 5, 2024 – June 1, 2024
- Summer Program – June 14, 2024 – July 14, 2024

Progress Monitoring & Evaluation

- Pre/Post Assessments
- Attitudinal Surveys (participants & parents)
- Progress reports
- Report cards
- External evaluator (formative & summative)

Partners

- Progressive Missionary & Educational Baptist State Convention, Inc.
- FAMU Black Male College Explorers
- FAMU College of Education
- FAMU/FSU College of Engineering
- College of Engineering Sciences, Technology and Agriculture
- School of Nursing
- FAMU College of Arts and Science

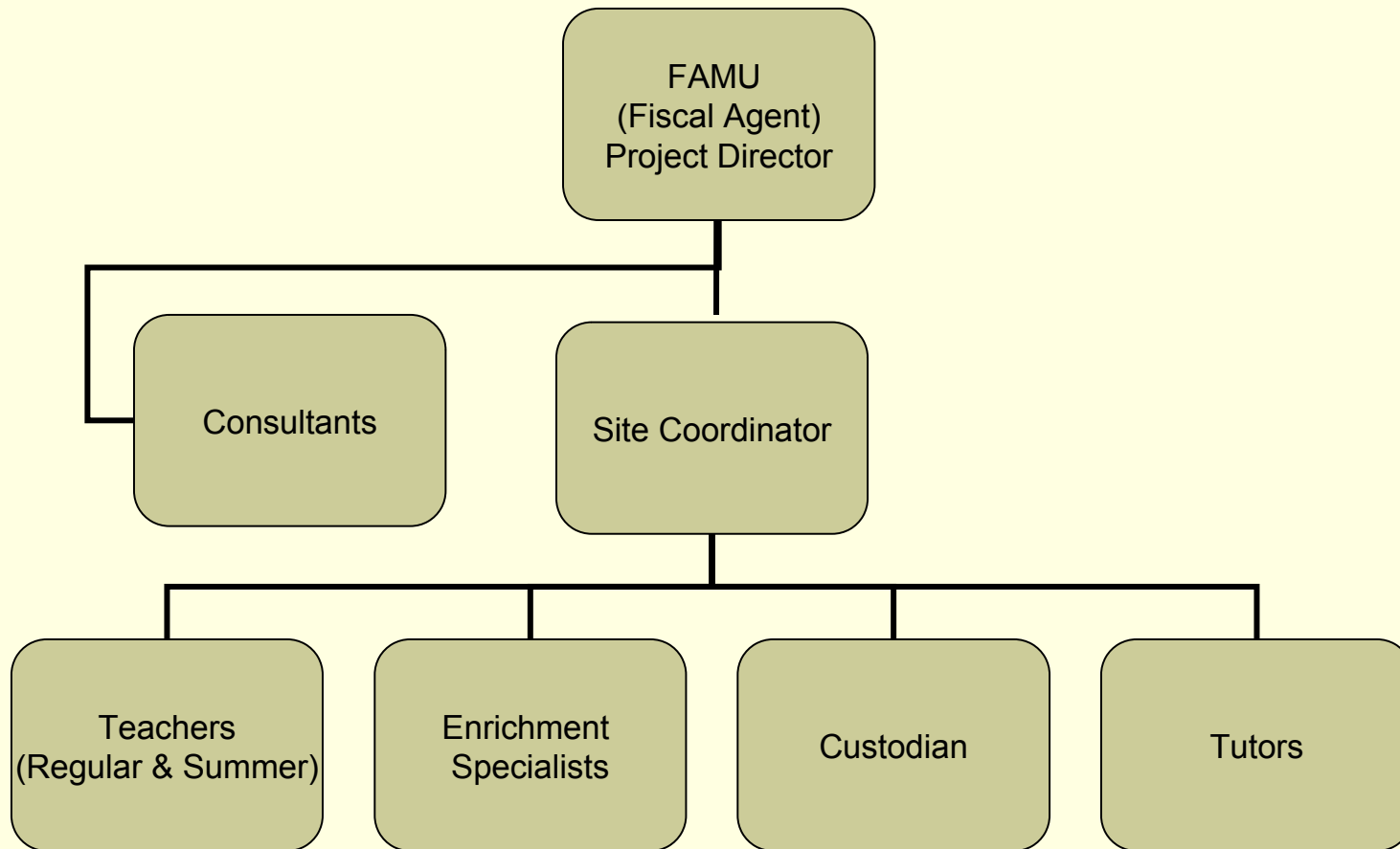
Partners continued.

- College of Pharmacy & Pharmaceutical Science
- College of Business & Industry
- School Architecture
- School of Allied Health Science
- School of Journalism & Graphic Communication
- Okaloosa/Walton Mental Health Association

Community Partners

- Florida Power and Light
- Okaloosa County Sheriff's Department
- Kappa Alpha Psi Fraternity, Inc.
- Michaels and Booth Law Firm
- Armament Museum
- Northwest Florida State College
- Okaloosa County Head Start
- Wells Fargo Bank
- Corner Stone Solutions
- Frank Crum Human Resources

Organizational Chart



School of Promise



Suggestions, Observations, Insight

Contact

Pastor Willie A. Farrow, President
Kemp Development Group
2 G David Street
Fort Walton Beach, Florida 32547
850-865-6029
farroww9@gmail.com