

The Body Map Profile: A Data Structure Hierarchy

Level 3 The Synthesis: The Body Map Profile

The BodyMapProfile constitutes the final, complete analysis

The final BodyMapProfile object is a collection of all seven theme scores, creating a comprehensive, structured overview of the genetic analysis.

Level 2 - The Aggregation: Thematic Scoring

DNA markers are organized into seven key themes

The system processes and scores collections of DnaMarker inputs to generate a value for each of the predefined themes.

Example: The Hormonal Balance Theme



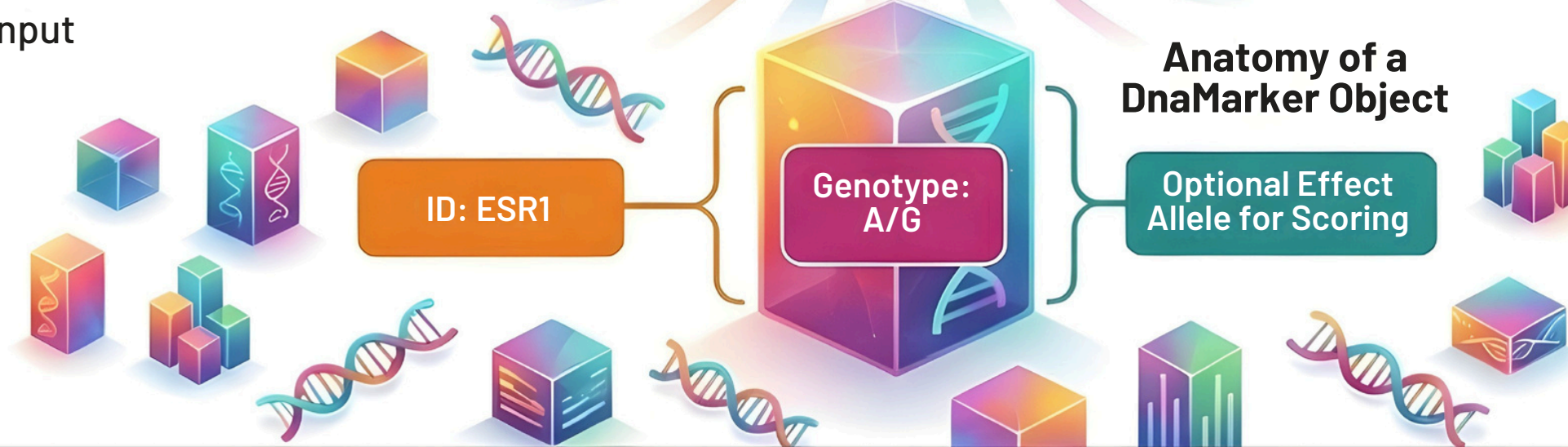
The ESR1 and ESR2 DNA markers are associated with the "Hormonal Balance" theme, which is geographically mapped to the Pelvic/Sacral region of the body.



Level 1 - The Foundation: DnaMarker Input

The process starts with individual DNA markers

The fundamental building block of the analysis is the DnaMarker object, which represents a single piece of genetic data from a user.



Lungs/Collar Bone/Thymus
Fear, Worry,
Stress Resilience

Brain/Crown
Engineered Programming
vs Sovereignty

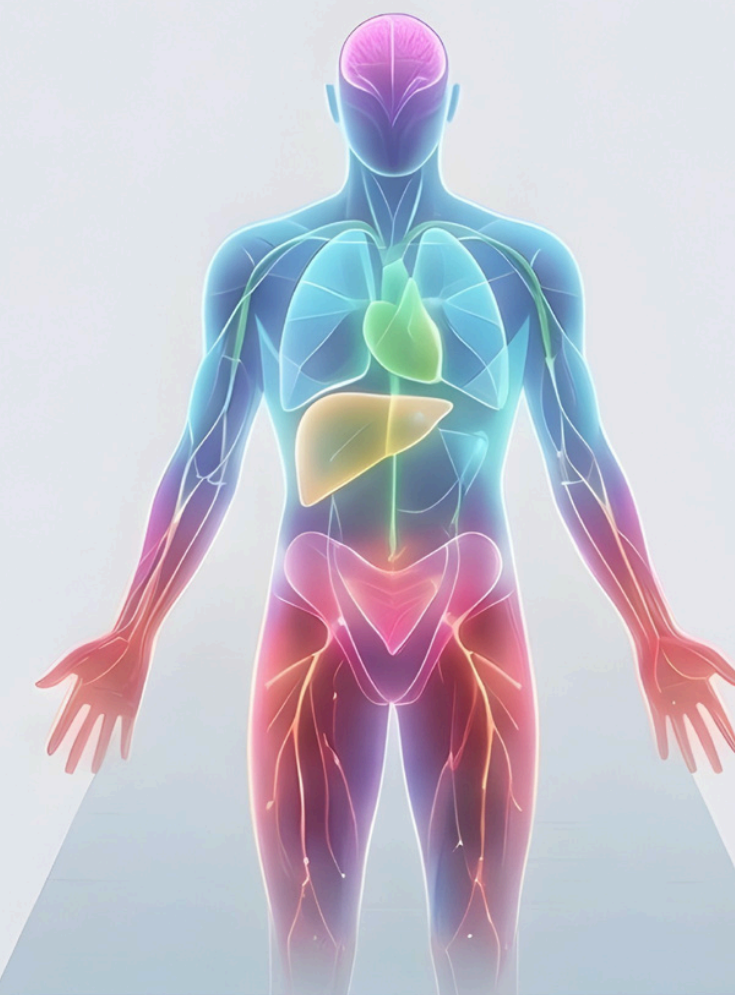
Brain/Pineal
Mood, Joy,
Addiction Risk

Heart/Solar Plexus
Trust, Empathy,
Relationships

Liver/Gall Bladder
Anger, Aggression,
Control

Pelvic/Sacral
Hormonal Balance

Full Body/Lymphatics
Systemic Toxicity vs
Cellular Purity



The profile can be enhanced with live biometric data

The static BodyMapProfile can be blended with real-time sensor data, such as coherence and relaxation metrics, to create a dynamic TheverEoalay for live feedback.