

# The BodyMap: Mapping Genetic Themes to Physiological Regions

## Engineered Programming vs Sovereignty

This theme is associated with the Brain and Crown region.



## Mood, Joy, Addiction Risk

This theme is associated with the Brain and Pineal gland region.



## Fear, Worry, Stress Resilience

This theme is associated with the Lungs, Collar Bone, and Thymus region.



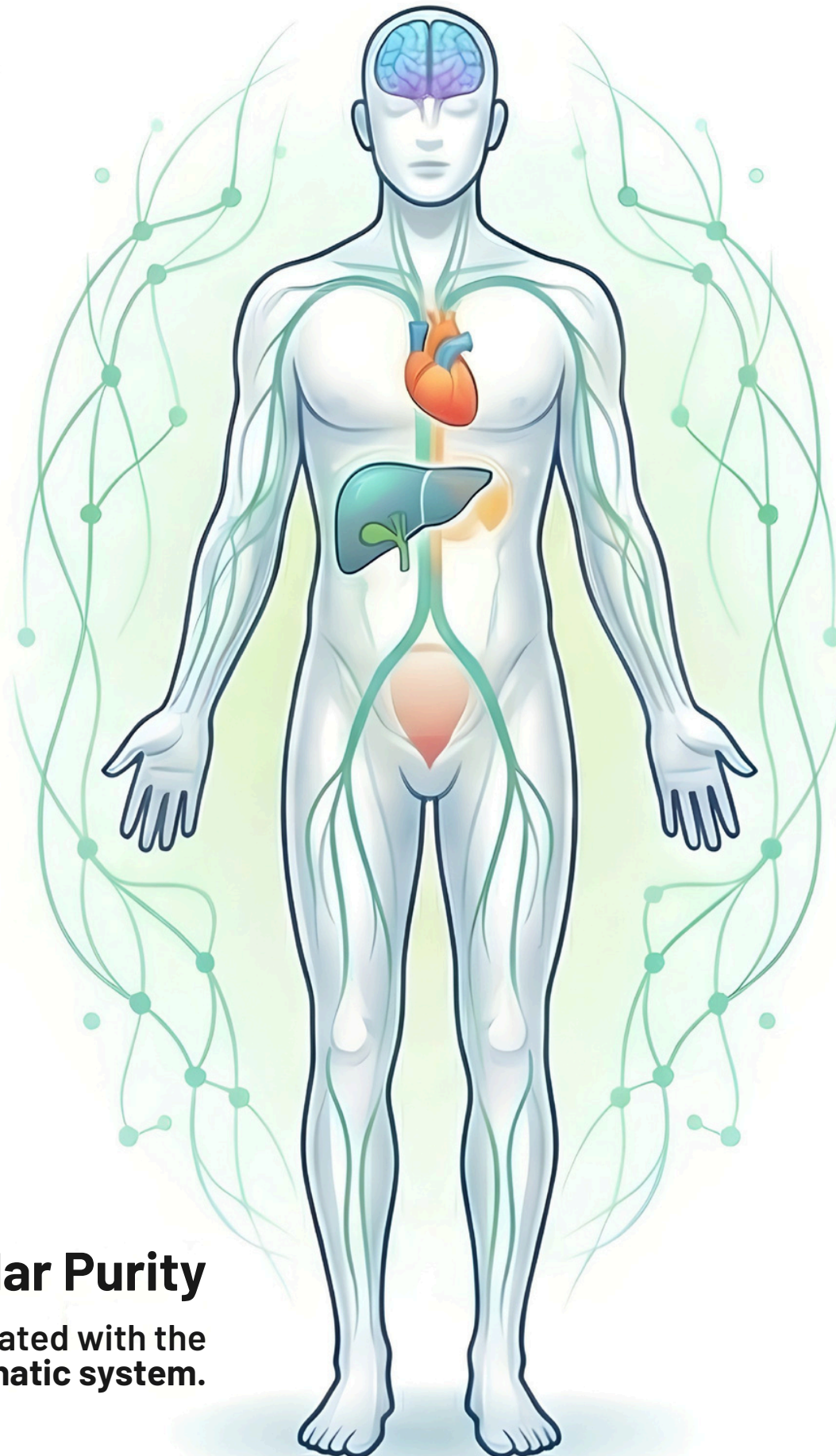
## Anger, Aggression, Control

This theme is associated with the Liver and Gall Bladder region.



## Systemic Toxicity vs Cellular Purity

This theme is associated with the Full Body and Lymphatic system.



## Trust, Empathy, Relationships

This theme is associated with the Heart and Solar Plexus region.



## Hormonal Balance


This theme is associated with the Pelvic and Sacral region.



## A Deeper Look: Genetic Markers for Hormonal Balance

### Specific DNA Markers Define the 'Hormonal Balance' Theme

This theme is linked to estrogen receptor polymorphisms that are known to influence mood swings and menopausal symptoms.

	DNA Marker	Description
	ESR1	Estrogen Receptor 1
	ESR2	Estrogen Receptor 2