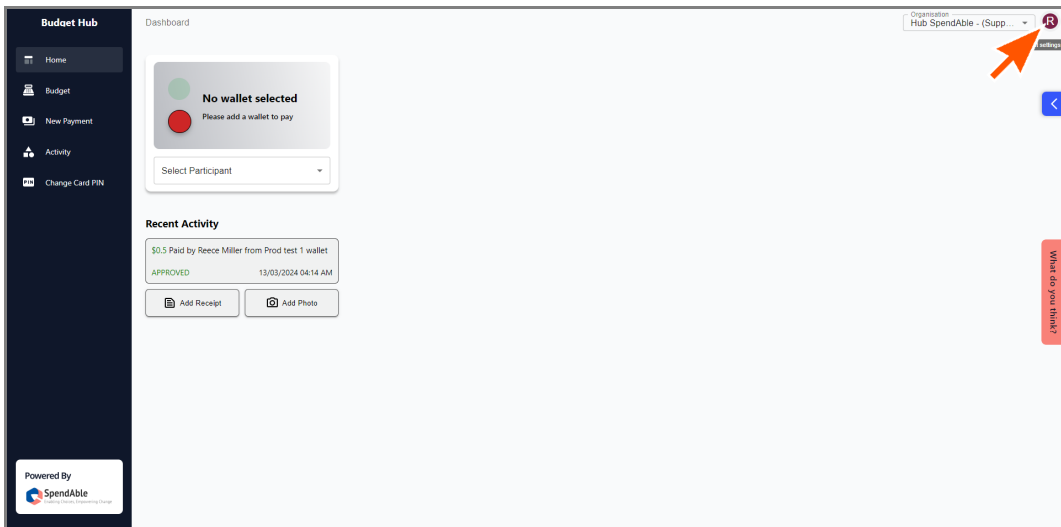


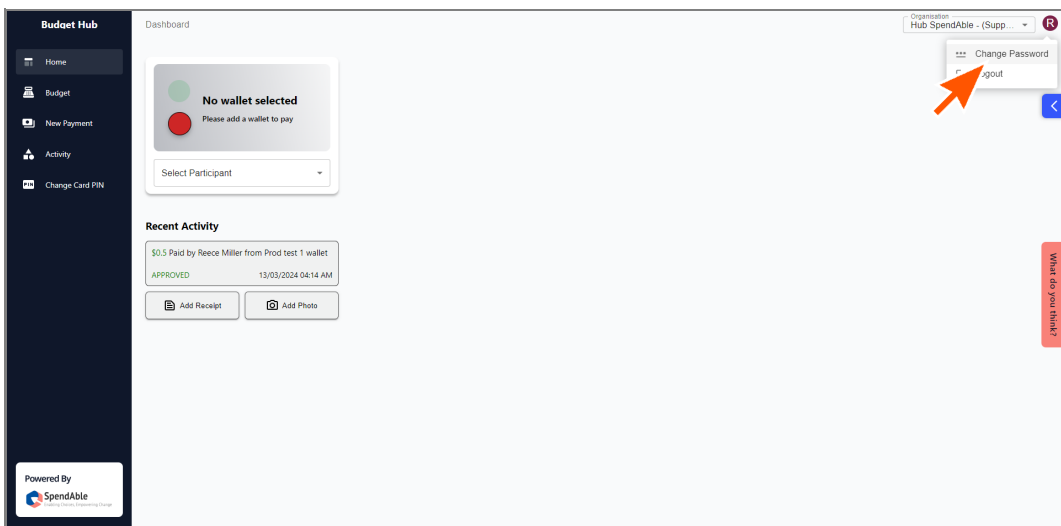
1.

When logged into the hub as a participant/supporter/Super admin you can change your password



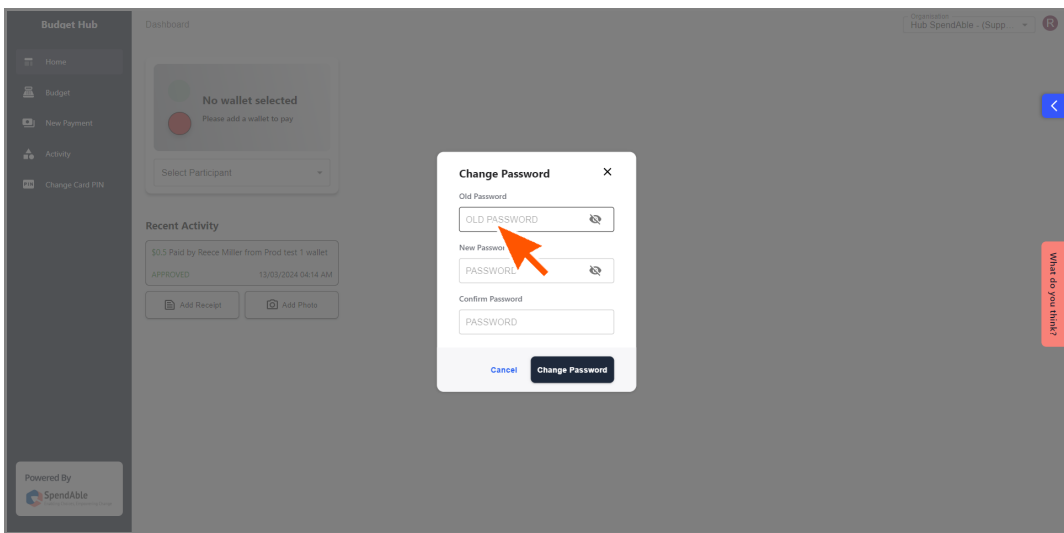
2.

Click the Circle with the first letter of your name

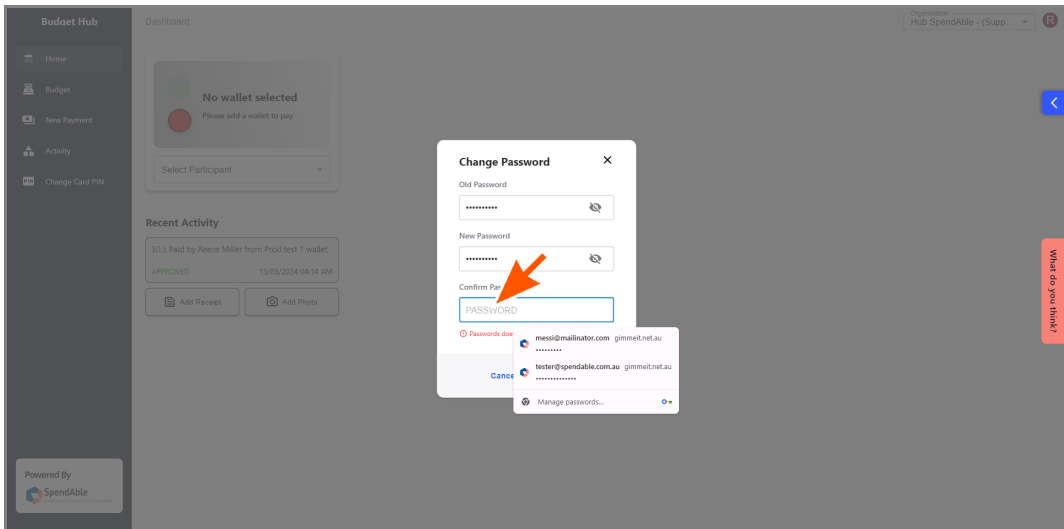


3.

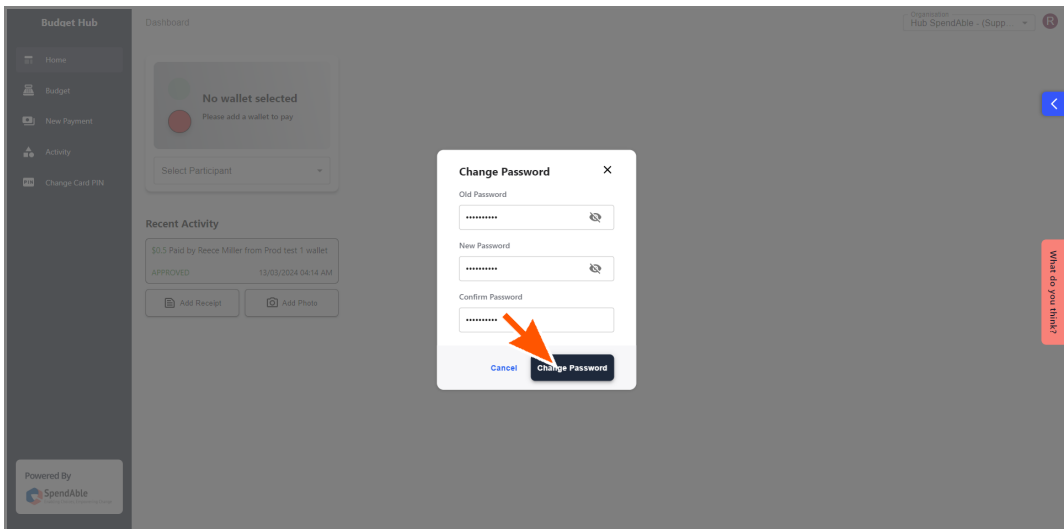
Click 'Change password'



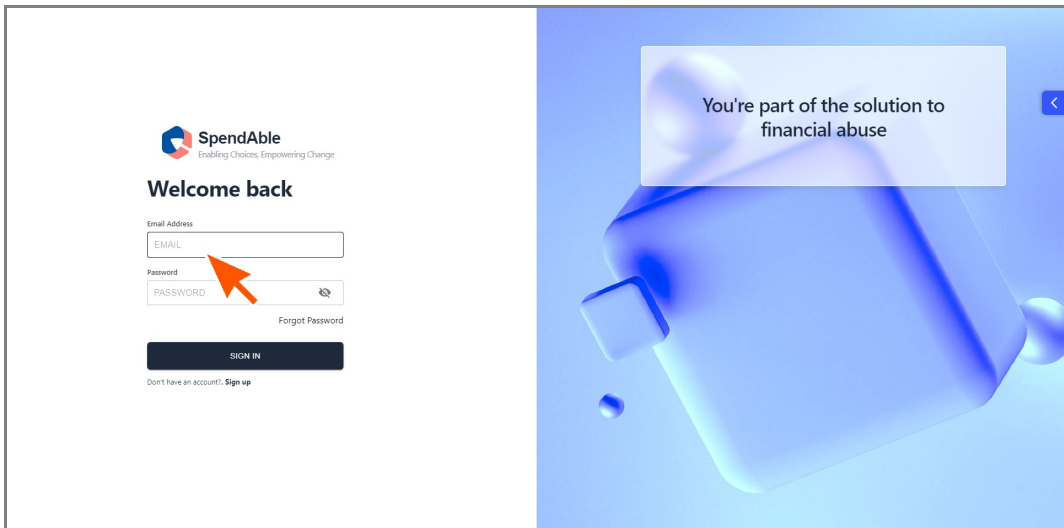
4.
Type in your old password



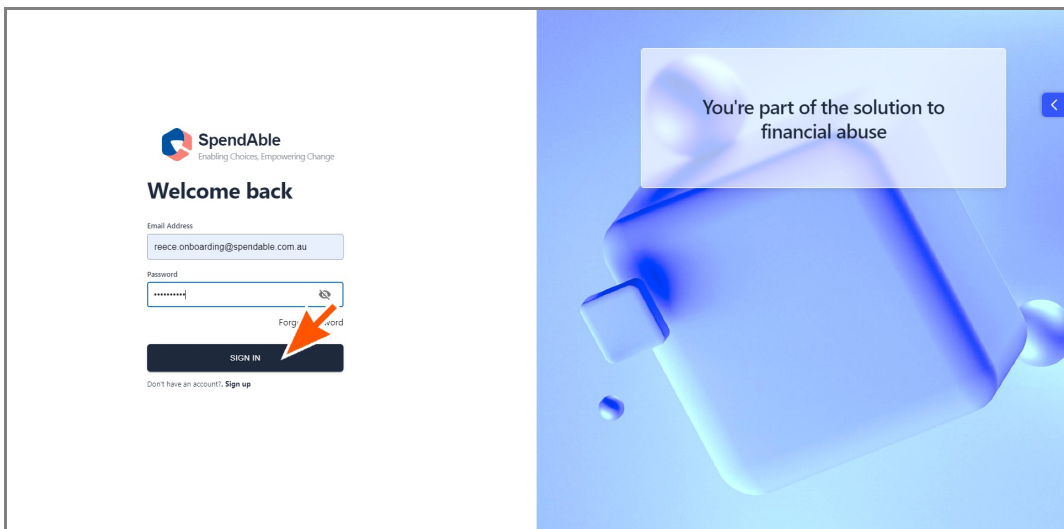
5.
Type in the password you want to use in the next 2 boxes



6.
Click 'Change Password'



7.
If successful, you'll be logged out.



8.
Enter your new password and press 'Sign In'