

CITK

How to pin dashboards as favourite



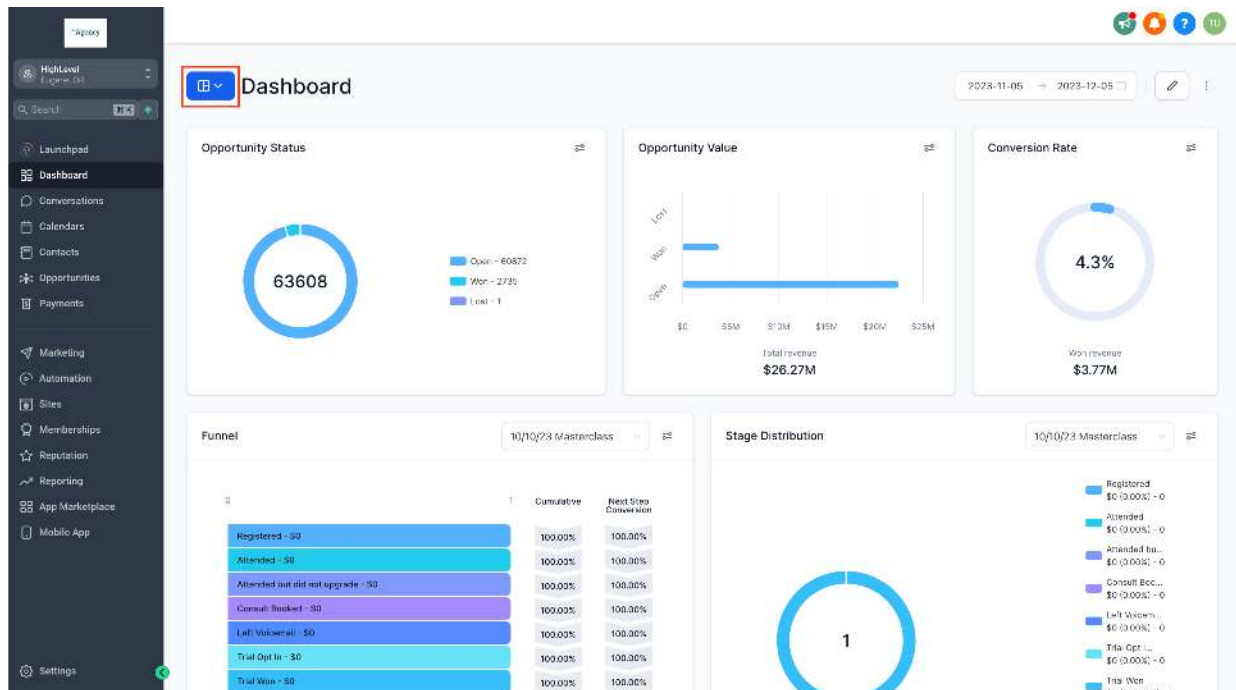
How to pin dashboards as favourite

Elevate your dashboard accessibility by pinning your favorite and most frequently used dashboards. This feature ensures swift access to your preferred insights whenever you need them. Follow these simple steps to start pinning dashboards.

TABLE OF CONTENTS

- [Step 1: Access the Dashboard Navigation](#)
- [Step 2: Pin or Unpin Dashboards](#)
- [Note:](#)
- [What's Next](#)

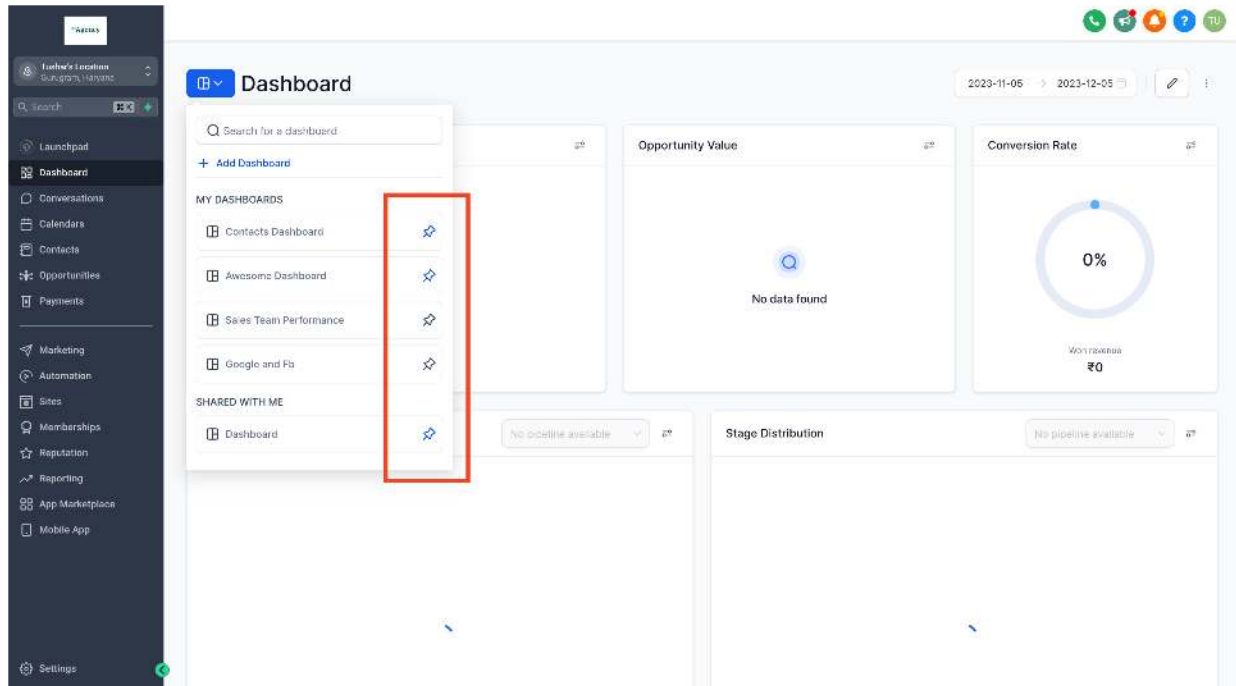
Step 1: Access the Dashboard Navigation



Locate the dashboard navigation button situated in the top left corner of your screen.

Step 2: Pin or Unpin Dashboards

How to pin dashboards as favourite



In the dashboard list, simply locate the desired dashboard, then toggle the pin icon next to its name to either pin or unpin the dashboard, depending on its current state.