



FUNERAL AND FORMALWEAR

MIX & MATCH COLLECTION

DESCRIPTION

Single breasted with double breasted lapels, centre vent.

FABRIC SPECIFICATION

Composition:
Pure new wool - Herringbone

SIZES

38" -48" short
34" -50" regular
38" -48" long

COLOURS

Available in 1 fabric colour:
A. Black

HERRINGBONE TAILCOAT - 5701



A.



A.



WASH & AFTER CARE RECOMMENDATIONS



STeP



STANDARD
100



Dry clean
only

GARMENT MEASURED FLAT & FASTENED (CM)

Size	34	36	38	40	42	44	46	48	50
1/2 Chest	51.5	51.5	54	56.5	59	61.5	64	66.5	69
Sleeve Length: Short			60	60.5	61	61.5	62	62.5	
Sleeve Length: Regular	60.5	61.5	62.5	63.5	64	64.5	65	65.5	66
Sleeve Length: Long			65	65.5	66	66.5	67	67.5	
Centre Back Length: Short			99.1	100	101.1	102.1	103.1	103.6	
Centre Back Length: Regular	99.6	100.6	101.6	102.6	103.6	104.6	105.6	106.1	106.6
Centre Back Length: Long			104.6	105.6	106.6	107.6	108.6	109.1	

MIX & MATCH COLLECTION

DESCRIPTION

Single breasted, 2 button front, side vents.

FABRIC SPECIFICATION

Composition:
Purenew wool - Herringbone

SIZES

38" -48" short
36" -50" regular
38" -48" long

COLOURS

Available in 1 fabric colour:
A. Black

LOUNGE JACKET-5702



WASH & AFTER CARE RECOMMENDATIONS



Dry clean
only

GARMENT MEASURED FLAT & FASTENED (CM)

Size	36	38	40	42	44	46	48	50
1/2 Chest	51.5	54	56.5	59	61.5	64	66.5	69
Sleeve Length: Short		61	62	62.5	63	63.5	64	
Sleeve Length: Regular	62.5	63.5	64.5	65	65.5	66	66.5	67
Sleeve Length: Long		66	67	67.5	68	68.5	69	
Centre Back Length: Short		73.5	74.5	75.5	76.5	77.5	78.5	
Centre Back Length: Regular	75	76	77	78	79	80	81	81.5
Centre Back Length: Long		79	80	81	82	83	84	

MIX & MATCH COLLECTION

DESCRIPTION

Superbly tailored in a wool blend twill, single pleat, brace buttons, belt loops, half lined.

FABRIC SPECIFICATION

Composition:
55% Polyester, 45% Wool

SIZES

28" - 52" waist in leg lengths
S- 29.5", R- 31.5" L- 33" & 36" unfinished

COLOURS

Available in 1 fabric colour:
C. Morning Stripe

STRIPED TROUSER- 8022



A.

MIX & MATCH JACKET-5047



B.

D.

C.

DESCRIPTION

Classic single breasted jacket, 2 button front, side vents, 4 internal pockets, hand stitched edges. Coordinates with Branmarket Trousers.

FABRIC SPECIFICATION

Composition:
55% Polyester, 45% Wool

SIZES

36" - 48" short
36" - 50" regular
(Navy & Black regular available up to 54")
36" - 48" long

COLOURS

Available in 3 fabric colours:
B. Navy
C. Charcoal
D. Black

WASH & AFTER CARE RECOMMENDATIONS



STeP



STANDARD
100



Alternatively, garments can be dry cleaned



Cool iron over damp cloth



Do NOT tumble dry



Reshape garments naturally



Wash with similar colours



Machine Washable

WASH & AFTER CARE RECOMMENDATIONS



Machine Washable



Wash with similar colours



Reshape garments naturally



Do NOT tumble dry



Cool iron over damp cloth



Alternatively, garments can be dry cleaned



STANDARD
100



STeP

GARMENT MEASURED FLAT & FASTENED (CM)

Size	28	30	32	34	36	38	40	42	44	46	48	50	52
1/2 Waist	36.5	39	41.5	44	46.5	49	51.5	54	56.5	59	61.5	64	66.5
Inside Leg: Short	75	75	75	75	75	75	75	75	75	75	75	75	75
Inside Leg: Regular	80	80	80	80	80	80	80	80	80	80	80	80	80
Inside Leg: Long	84	84	84	84	84	84	84	84	84	84	84	84	84
Inside Leg: Unfinished	91.5	91.5	91.5	91.5	91.5	91.5	91.5	91.5	91.5	91.5	91.5	91.5	91.5

GARMENT MEASURED FLAT & FASTENED (CM)

Size	36	38	40	42	44	46	48	50	52	54
1/2 Chest	52.5	55	57.5	60	62.5	65	67.5	70	72.5	75
Sleeve Length: Short	60.5	61.5	62.5	63	63.5	64	64.5			
Sleeve Length: Regular	63	64	65	65.5	66	66.5	67	67.5	68	68.5
Sleeve Length: Long	65.5	66.5	67.5	68	68.5	69	69.5			
Centre Back Length: Short	74.5	75.5	76.5	77.5	78.5	79.5	80.5			
Centre Back Length: Regular	77	78	79	80	81	82	83	83.5	84	84.5
Centre Back Length: Long	80	81	82	83	84	85	86			



Contains
30%recycled
material

TODAY COLLECTION

DESCRIPTION

Curved neckline, satinstripe seam detail, pleats for ease of movement, princess seams, centre vent, centre back zip, short sleeve.

FABRIC SPECIFICATION

Composition:

63% Polyester (30% Recycled), 34% Viscose, Elastane @3% LYCRA

335gsm / Midweight Weight:
16% High Level Stretch:

Durability: Martindale Test >90,000 rubs

SIZES

6 - 24 regular

8 - 20 long

Centre back length at size 12R = 97cm

COLOURS

Available in 3 fabric colours:

- A. Navy
- C. Charcoal
- D. Black

BORDEAUX DRESS- 2347



WASH & AFTER CARE RECOMMENDATIONS



Alternatively, garments can be dry cleaned



Cool iron over damp cloth



Do NOT tumble dry



Reshape garments naturally



Wash with similar colours



Machine Washable

Size	6	8	10	12	14	16	18	20	22	24
1/2 Bust	41.5	44	46.5	49	51.5	54	56.5	59	61.5	64
Sleeve Length	17.5	18	18.5	19	19.5	20	20.5	21	21.5	22
Centre Back Length: Regular	95.5	96	96.5	97	97.5	98	100.5	101	101.5	102
Centre Back Length: Long		103.5	104	104.5	105	105.5	108	108.5		



Contains
30%recycled
material

TODAY COLLECTION

DESCRIPTION

1 button front, notch lapel, centre vent, twin outer welt pockets.

FABRIC SPECIFICATION

Composition:

63% Polyester (30% Recycled), 34% Viscose, 3% LYCRA® Elastane

Weight: 335gsm / Midweight

Stretch: 16% High Level

Durability: Martindale Test >90,000 rubs

SIZES

8 - 16 short

4 - 26 regular

10 - 18 long

Centre back length at size 12R = 63.2cm

COLOURS

Available in 3 fabric colours:

- A. Navy
- C. Charcoal
- D. Black

CANNES JACKET/TAILORED FIT- 2326



WASH & AFTER CARE RECOMMENDATIONS



Machine Washable



Wash with similar colours



Reshape garments naturally



Do NOT tumble dry



Cool iron over damp cloth



Alternatively, garments can be dry cleaned

GARMENT MEASURED FLAT & FASTENED (CM)

Size	4	6	8	10	12	14	16	18	20	22	24	26
1/2 Bust	41.2	43.7	46.2	48.7	51.2	53.7	56.2	58.7	61.2	63.7	66.2	68.7
Sleeve Length: Short			56.5	57	57.5	58	58.5					
Sleeve Length: Regular	58	58.5	59	59.5	60	60.5	61	61.5	62	62.5	63	63.5
Sleeve Length: Long				62	62.5	63	63.5	64				
Centre Back Length: Short			57.5	58.1	58.7	59.3	59.9					
Centre Back Length: Regular	60.8	61.4	62	62.6	63.2	63.8	64.4	65	65.5	66.2	66.8	67.4
Centre Back Length: Long				67.1	67.7	68.3	68.9	69.5				



Contains
30% recycled
material

TODAY COLLECTION

DESCRIPTION

5 button front, 2 welt pockets,
lining back with adjuster.

TOULOUSEWAISTCOAT / TAILOREDFIT-2328



COMMODITYCODE:62043390000

FABRIC SPECIFICATION

Composition:

63% Polyester (30% Recycled), 34% Viscose,
Elastane @3% LYCRA

335gsm / Midweight

16% High Level

Durability: Martindale Test > 90,000 rubs

SIZES

XS 4 - 6

S 8 - 10

M 12 - 14

L 16 - 18

XL 20 - 22

2XL 24 - 26

Centre back length at size M = 51.5cm

COLOURS

Available in 3 fabric colours:

A. Navy

C. Charcoal

D. Black



www.LYCRA.com



34% Birla Spunshades™
Viscose



STeP



STANDARD
100



Alternatively,
garments can
be dry cleaned



Cool iron
over
damp cloth



Do NOT
tumble
dry



Reshape
garments
naturally



Wash with
similar
colours



Machine
Washable

WASH & AFTERCARE RECOMMENDATIONS

GARMENT MEASURED FLAT & FASTENED (CM)

Size	XS	S	M	L	XL	2XL
1/2 Bust	40	45	50	55	60	65
Centre Back Length	49.5	50.5	51.5	52.5	53.5	54.5



Contains
30% recycled
material

TODAY COLLECTION

DESCRIPTION

Straight skirt, centre vent, front waistband detail.

LYON SKIRT/ STRAIGHT-2329



FABRIC SPECIFICATION

Composition:

63% Polyester (30% Recycled), 34% Viscose,
3% LYCRA® Elastane

Weight: 335gsm / Midweight

Stretch: 16% High Level

Durability: Martindale Test > 90,000 rubs

SIZES

4 - 26 regular - 22"

8 - 18 long - 25"

COLOURS

Available in 3 fabric colours:

A. Navy

C. Charcoal

D. Black

WASH & AFTERCARE RECOMMENDATIONS



Machine
Washable



Wash with
similar
colours



Reshape
garments
naturally



Do NOT
tumble
dry



Cool iron
over
damp cloth



Alternatively,
garments can
be dry cleaned



34% Birla Spunshades™
Viscose



STANDARD
100



STeP



www.LYCRA.com

GARMENT MEASURED FLAT & FASTENED (CM)

Size	4	6	8	10	12	14	16	18	20	22	24	26
1/2 Waist	30	32.5	35	37.5	40	42.5	45	47.5	50	52.5	55	57.5
1/2 Hip	41.5	44	46.5	49	51.5	54	56.5	59	61.5	64	66.5	69
Centre Back Length: Regular	56	56	56	56	56	56	56	56	56	56	56	56
Centre Back Length: Long			63.5	63.5	63.5	63.5	63.5	63.5				

OUTERWEAR COLLECTION
OVERCOATS

DESCRIPTION

Single breasted, 7 button, fly front,
centre vent, Rearbelt detail.

FABRIC SPECIFICATION

Composition:
65% Wool, 25% Polyamide, 10%Cashmere

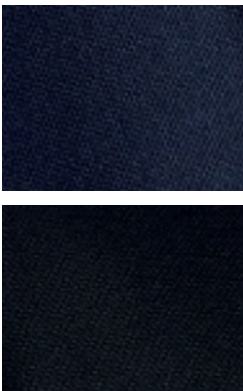
SIZES

6 - 24 regular
Centre back length at size 12R= 103cm

COLOURS

Available in 2 fabric colours:
B. Navy
C. Black

BURLINGTONOVERCOAT - 2261



B.

C.

WASH & AFTER CARE RECOMMENDATIONS



Dry clean
only

GARMENT MEASURED FLAT & FASTENED (CM)

Size	6	8	10	12	14	16	18	20	22	24
1/2 Bust	44.5	47	49.5	52	54.5	57	59.5	62	64.5	67
Sleeve Length: Regular	61.2	61.6	62	62.4	62.8	63.2	63.6	64	64.4	64.8
Centre Back Length: Regular	100	101	102	103	104	105	106	107	108	109

OUTERWEAR COLLECTION
RAINCOATS

DESCRIPTION

Single breasted, 3 button fly front, centre vent,
raglan sleeve, viscose check lining.

FABRIC SPECIFICATION

Composition:
55% Polyester, 45% wool

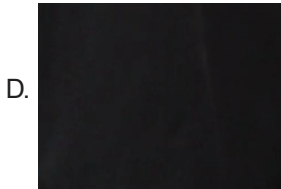
SIZES

36" - 52" regular
40" - 50" long
Centre back length at size 40R=102cm

COLOURS

Available in 1 fabric colour:
D. Black

WHIPCORDRAINCOAT - 4003



D.

WASH & AFTER CARE RECOMMENDATIONS



Machine
Washable



Wash with
similar
colours



Reshape
garments
naturally



Do NOT
tumble
dry



Cool iron
over
damp cloth



Alternatively,
garments can
be dry cleaned



STANDARD
100



STeP



GARMENT MEASURED FLAT & FASTENED (CM)

Size	36	38	40	42	44	46	48	50	52
1/2 Chest	55.5	57.5	59.5	61.5	63.5	67.5	67.5	69.5	71.5
Sleeve Length: Regular	79.5	80	81	82	83	84	85	86	87
Sleeve Length: Long			83.5	84.5	85.5	86.5	87.5	88.5	
Centre Back Length: Regular	102	102	102	103	104	105	106	107	108
Centre Back Length: Long			104.5	105.5	106.5	107.5	108.5	109.5	

OUTERWEAR COLLECTION RAINCOATS

DESCRIPTION

Waterproof fabric (2000mm), taped seam construction, 5 button fly front with zip, centre vent, 2 outer welt pockets, quilted lining with 2 internal pockets, collar incorporating concealed hood, cuff with tab detail.

FABRIC SPECIFICATION

Composition:
100% Polyester, waterproof (2000mm)

SIZES

36" - 50" regular
Centre back length at size 40R= 90cm

COLOURS

Available in 2 fabric colours:

- A. Navy
- D. Black

CHICAGO RAINCOAT - 9887



WASHINGTON RAINCOAT - 2346



DESCRIPTION

Waterproof fabric (2000mm), taped seam construction, 5 button fly front with zip, centre vent, 2 outer welt pockets, quilted lining with 2 internal pockets, collar incorporating concealed hood, cuff with tab detail, front princess seams.

FABRIC SPECIFICATION

Composition:
100% Polyester, waterproof (2000mm)

SIZES

6 - 24 regular
Centre back length at size 12R= 93cm

COLOURS

Available in 2 fabric colours:

- A. Navy
- D. Black

WASH & AFTER CARE RECOMMENDATIONS



Alternatively, garments can be dry cleaned



Cool iron over damp cloth



Do NOT tumble dry



Reshape garments naturally



Wash with similar colours



Machine Washable

GARMENT MEASURED FLAT & FASTENED (CM)

Size	36	38	40	42	44	46	48	50
1/2 Chest	55.5	58	60.5	64.5	68.5	72.5	76.5	80.5
Sleeve Length: Regular	66	67	68	69	70	71	72	73
Centre Back Length: Regular	88	89	90	91	92	93.5	95	96.5

WASH & AFTER CARE RECOMMENDATIONS



Machine Washable



Wash with similar colours



Reshape garments naturally



Do NOT tumble dry



Cool iron over damp cloth



Alternatively, garments can be dry cleaned



GARMENT MEASURED FLAT & FASTENED (CM)

Size	6	8	10	12	14	16	18	20	22	24
1/2 Bust	47.5	50	52.5	55	57.5	60	62.5	65	67.5	70
Sleeve Length: Regular	60	61	62	63	64	65	66	67	68	69
Centre Back Length: Regular	90	91	92	93	94	95	96	97	98	99



Contains
100%recycled
material

OUTERWEAR COLLECTION WATERPROOF MACS

DESCRIPTION

Waterproof with taped seams, underarm air holes, concealed chest pocket, 2 front pockets, grown on placket, zip fastening with 5 poppers, centre back vents. Alternative zip puller colours available.

FABRIC SPECIFICATION

Composition:
100% Polyester (Recycled)

SIZES

36" - 50" regular
Centre back length at size 40R= 89cm

COLOURS

Available in 2 fabric colours:

- A. Navy
- D. Black

ALTERNATIVE ZIP PULLER COLOURS

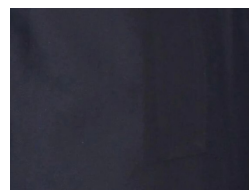
PACK OF 100

Bungee-style pullers are available to order separately for personalisation.

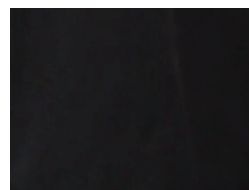
Code & Colours: 1979 A, B, C, D, E, F, G, H, I, J



SPENCER/ WATERPROOFMAC- 9177



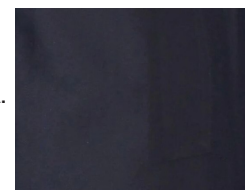
A.



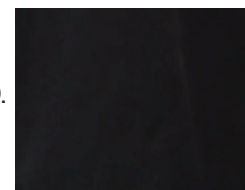
D.



LOUISE/ WATERPROOF MAC- 2423



A.



D.

DESCRIPTION

Waterproof with taped seams, underarm air holes, concealed chest pocket, 2 front pockets, grown on placket, zip fastening with 5 poppers, centre back vents. Alternative zip puller colours available.

FABRIC SPECIFICATION

Composition:
100% Polyester (Recycled)

SIZES

6 - 24 regular
Centre back length at size 12R= 86cm

COLOURS

Available in 2 fabric colours:

- A. Navy
- D. Black

ALTERNATIVE ZIP PULLER COLOURS

PACK OF 100

Bungee-style pullers are available to order separately for personalisation.

Code & Colours: 1979 A, B, C, D, E, F, G, H, I, J



WASH & AFTER CARE RECOMMENDATIONS



STANDARD
100



Alternatively,
garments can
be dry cleaned



Cool iron
over
damp cloth



Do NOT
tumble
dry



Reshape
garments
naturally



Wash with
similar
colours



Machine
Washable

GARMENT MEASURED FLAT & FASTENED (CM)

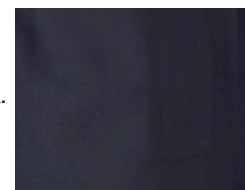
Size	36	38	40	42	44	46	48	50
1/2 Chest	52.5	55	57.5	60	62.5	65	67.5	70
Sleeve Length: Regular	64.5	65.5	66.5	67.5	68.5	69.5	70.5	71.5
Centre Back Length: Regular	87	88	89	90	91	92	93	94



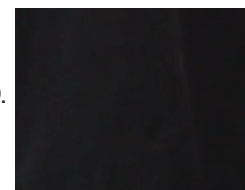
Contains
100%recycled
material

OUTERWEAR COLLECTION WATERPROOF MACS

LOUISE/ WATERPROOF MAC- 2423



A.



D.

WASH & AFTER CARE RECOMMENDATIONS



Machine
Washable



Wash with
similar
colours



Reshape
garments
naturally



Do NOT
tumble
dry



Cool iron
over
damp cloth



Alternatively,
garments can
be dry cleaned



STANDARD
100

GARMENT MEASURED FLAT & FASTENED (CM)

Size	6	8	10	12	14	16	18	20	22	24
1/2 Bust	49	51.5	54	56.5	59	61.5	64	66.5	69	71.5
Sleeve Length: Regular	59	60	61	62	63	64	65	66	67	68
Centre Back Length: Regular	83	84	85	86	87	88	89	90	91	92

SHIRT & BLOUSE COLLECTION
PREMIUM COTTON - HERRINGBONE WEAVE

DESCRIPTION

Long sleeve, single cuff, taped seams,
removable metal collar stiffeners.

FABRIC SPECIFICATION

Composition:
100% Superfine Cotton
Weight: 130gsm/ Lightweight

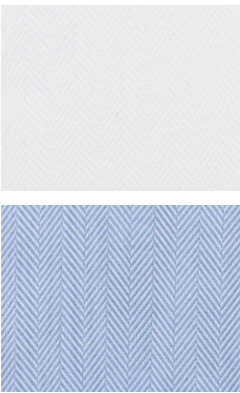
SIZES

14.5" - 18"

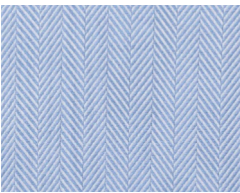
COLOURS

Available in 2 fabric colours:
A. White Herringbone
B. Blue Herringbone

PALERMO SHIRT/ SLIMFIT- 4435

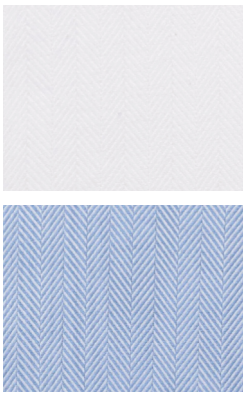


A.



B.

ALTARE SHIRT/ CLASSICFIT- 7655



A.



B.

DESCRIPTION

Long sleeve, single cuff, chest pocket,
taped seams,removable metal collar stiffeners,
extra long sleeve available.

FABRIC SPECIFICATION

Composition:
100% Superfine Cotton
Weight: 130gsm/ Lightweight

SIZES

14.5" -20"

COLOURS

Available in2 fabric colours:
A. White Herringbone
B. Blue Herringbone

WASH & AFTER CARE RECOMMENDATIONS



STeP



STANDARD
100



Do NOT
dry
clean



Cool
tumble dry



Easy
Iron



Wash with
similar
colours



Machine
Washable

GARMENT MEASURED FLAT & FASTENED (CM)

Size	14.5	15	15.5	16	16.5	17	17.5	18
1/2 Chest	52	54.5	57	59.5	62	64.5	67	69.5
Centre Back Length (Neck to Hem)	76.5	77.8	79	80.3	81.6	82.8	84.1	85.4
Sleeve Length (Crown to Cuff)	63.2	63.8	64.4	63.8	63.2	63.5	62.8	62.2

WASH & AFTER CARE RECOMMENDATIONS



Machine
Washable



Wash with
similar
colours



Easy
Iron



Cool
tumble dry



Do NOT
dry
clean



STANDARD
100



STeP

GARMENT MEASURED FLAT & FASTENED (CM)

Size	14.5	15	15.5	16	16.5	17	17.5	18	18.5	19	19.5	20
1/2 Chest	54.7	57.2	59.7	62.2	64.7	67.2	69.7	72.2	74.7	77.2	79.7	82.2
Centre Back Length (Neck to Hem)	85.1	86.4	87.6	88.9	90.2	91.4	92.7	94	95.3	95.3	96.6	96.6
Sleeve Length: Regular (Crown to Cuff)	63.5	64.1	64.7	64.1	63.5	63.8	63.1	62.5	62.8	62.2	61.5	60.9
Sleeve Length: Long (Crown to Cuff)	67.5	68.1	68.7	68.1	67.5	67.8	67.1	66.5	66.8	66.2	65.5	64.9



Contains
65% recycled
material

SHIRT & BLOUSE COLLECTION
BUSINESS ESSENTIALS

DESCRIPTION

Long sleeve, classic collar, 2 button cuff, chest pocket.

FABRIC SPECIFICATION

Composition:

65% Polyester (Recycled), 35% Cotton

Weight: 115gsm/ Lightweight

SIZES

14.5" - 22"

COLOUR

Available in 3 fabric colours:

- A. White
- B. Blue
- D. Black

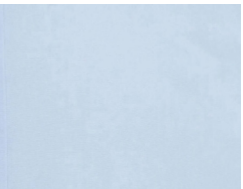
JUNO SHIRT/ CLASSIC FIT- 7742



D.



A.



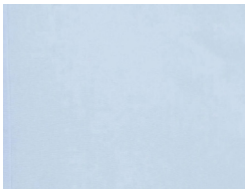
B.



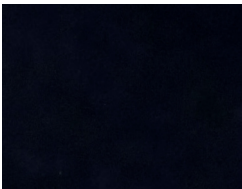
VESTA SHIRT/ CLASSIC FIT- 7743



A.



B.



D.

DESCRIPTION

Short sleeve, classic collar, 2 button cuff, chest pocket.

FABRIC SPECIFICATION

Composition:

65% Polyester (Recycled), 35% Cotton

Weight: 115gsm/ Lightweight

SIZES

14.5" - 22"

COLOUR

Available in 3 fabric colours:

- A. White
- B. Blue
- D. Black



Contains
65% recycled
material

SHIRT & BLOUSE COLLECTION
BUSINESS ESSENTIALS

WASH & AFTER CARE RECOMMENDATIONS



STeP



STANDARD
100



Do NOT
dry
clean



Cool
tumble dry



Easy
Iron



Wash with
similar
colours



Machine
Washable

GARMENT MEASURED FLAT & FASTENED (CM)

Size	14.5	15	15.5	16	16.5	17	17.5	18	19	20	21	22
1/2 Chest	53.5	56	58.5	61	63.5	66	68.5	71	76	81	83.5	86
Centre Back Length (Neck to Hem)	77.5	78.8	80	81.3	82.6	83.8	85.1	86.4	87.7	89	89	89
Sleeve Length (Crown to Cuff)	63.5	64.1	64.7	64.1	63.5	63.8	63.1	62.5	62.2	60.9	60.9	60.9

WASH & AFTER CARE RECOMMENDATIONS



Machine
Washable



Wash with
similar
colours



Easy
Iron



Cool
tumble dry



Do NOT
dry
clean



STANDARD
100



STeP

GARMENT MEASURED FLAT & FASTENED (CM)

Size	14.5	15	15.5	16	16.5	17	17.5	18	19	20	21	22
1/2 Chest	53.5	56	58.5	61	63.5	66	68.5	71	76	81	83.5	86
Centre Back Length (Neck to Hem)	77.5	78.8	80	81.3	82.6	83.8	85.1	86.4	87.7	89	89	89
Sleeve Length (Crown to Cuff)	24	24.5	25	25.5	26	26.5	27	27.5	28	28	28.5	28.5

SHIRT & BLOUSE COLLECTION
PREMIUM COTTON - HERRINGBONE WEAVE

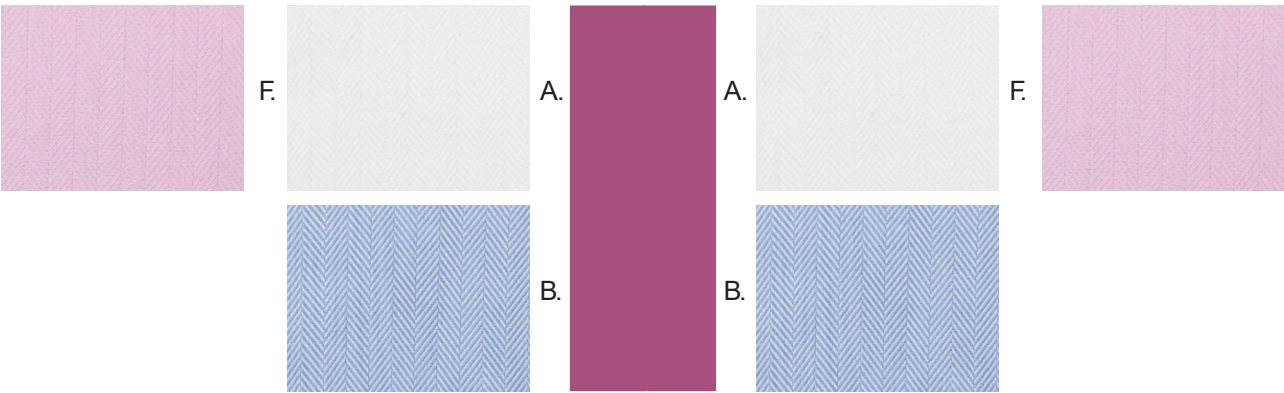
DESCRIPTION
Long sleeve, single cuff, taped seams,
button up collar, fly front.

FABRIC SPECIFICATION
Composition:
100% Superfine Cotton
Weight: 130gsm/ Lightweight

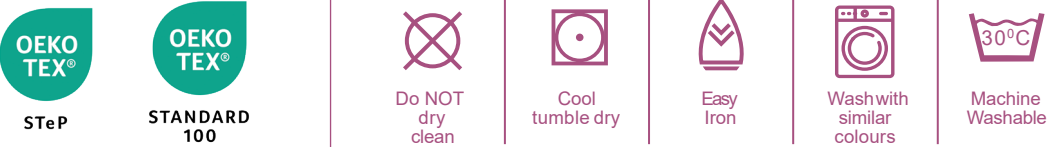
SIZES
6 -24 regular

COLOURS
Available in 3 fabric colours:
A. White Herringbone
B. Blue Herringbone
F. Pink Herringbone

PROSECCO BLOUSE/ SEMI-FITTED -2283



WASH & AFTER CARE RECOMMENDATIONS



GARMENT MEASURED FLAT & FASTENED (CM)

Size	6	8	10	12	14	16	18	20	22	24
1/2 Bust	43	45.5	48	50.5	53	55.5	58	60.5	63	65.5
Centre Back Length (Neck to Hem)	63	64	65	66	67	68	69	70	71	72
Sleeve Length (Crown to Cuff)	61	61	62	62	62.5	62.5	63	63	63.5	63.5

SHIRT & BLOUSE COLLECTION
PREMIUM COTTON - HERRINGBONE WEAVE

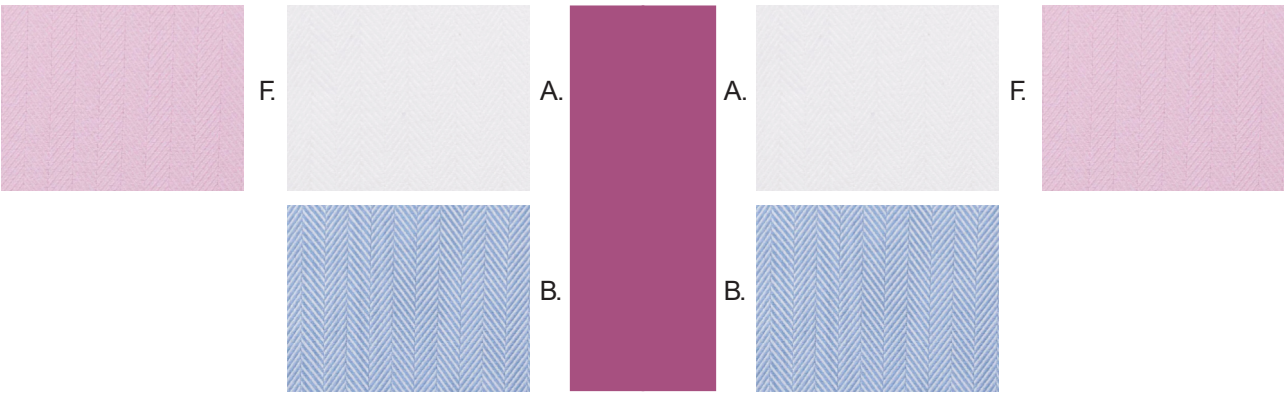
DESCRIPTION
Short sleeve, taped seams,
button up collar, fly front.

FABRIC SPECIFICATION
Composition:
100% Superfine Cotton
Weight: 130gsm/ Lightweight

SIZES
6 -24 regular

COLOURS
Available in 3 fabric colours:
A. White Herringbone
B. Blue Herringbone
F. Pink Herringbone

CHIANTI BLOUSE/ SEMI-FITTED-2284



WASH & AFTER CARE RECOMMENDATIONS



GARMENT MEASURED FLAT & FASTENED (CM)

Size	6	8	10	12	14	16	18	20	22	24
1/2 Bust	43	45.5	48	50.5	53	55.5	58	60.5	63	65.5
Centre Back Length (Neck to Hem)	63	64	65	66	67	68	69	70	71	72
Sleeve Length (Crown to Cuff)	17.7	18.4	19.1	19.8	20.5	21.2	21.9	22.6	23.3	24

SHIRT & BLOUSE COLLECTION
PUSSYBOW BLOUSE

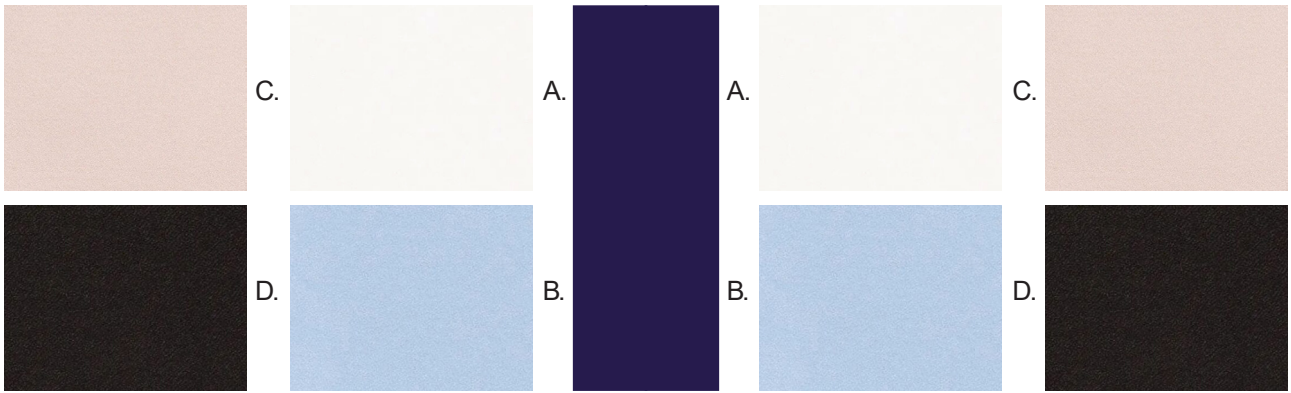
DESCRIPTION
Long sleeve, tie neck,
high level of stretch, semi-fitted.

FABRIC SPECIFICATION
Composition:
96% Polyester, 4% Elastane
Weight: 135gsm/ Lightweight

SIZES
6 -26 regular

COLOURS
Available in 4 fabric colours:
A. White
B. Sky Blue
C. Nude
D. Black

ANDRIA BLOUSE/ PUSSYBOW- 2368



WASH & AFTER CARE RECOMMENDATIONS



GARMENT MEASURED FLAT & FASTENED (CM)

Size	6	8	10	12	14	16	18	20	22	24	26
1/2 Bust	45	47.5	50	52.5	55	57.5	60	62.5	65	67.5	70
Centre Back Length (Neck to Hem)	60	61	62	63	64	65	66	67	68	69	70
Sleeve Length (Crown to Cuff)	62	62.5	63	63.5	64	64.5	65	65.5	66	66.5	67

SHIRT & BLOUSE COLLECTION
PUSSYBOW BLOUSE

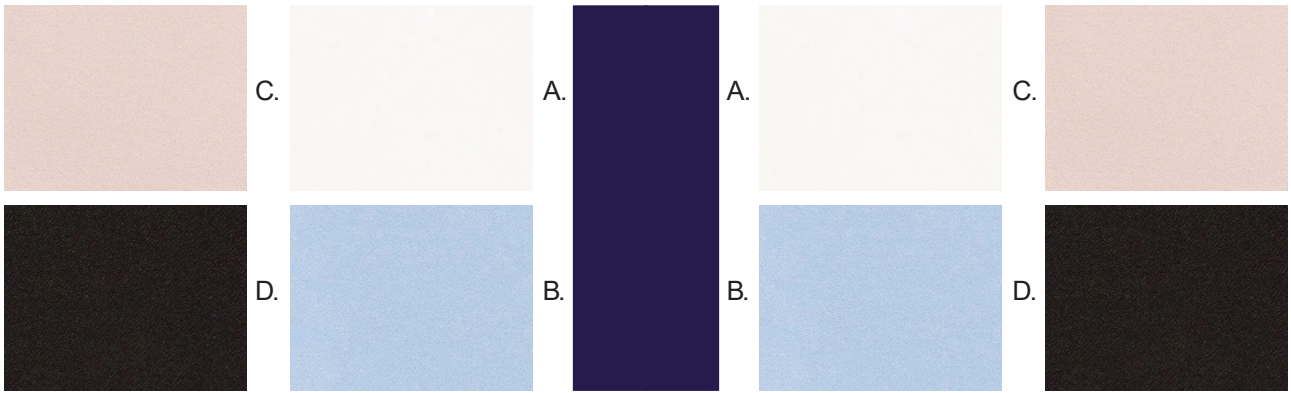
DESCRIPTION
Short sleeve, tie neck,
high level of stretch, semi-fitted.

FABRIC SPECIFICATION
Composition:
96% Polyester, 4% Elastane
Weight: 135gsm/ Lightweight

SIZES
6 -26 regular

COLOURS
Available in 4 fabric colours:
A. White
B. Sky Blue
C. Nude
D. Black

FLAVIA BLOUSE/ PUSSYBOW - 2369



WASH & AFTER CARE RECOMMENDATIONS



GARMENT MEASURED FLAT & FASTENED (CM)

Size	6	8	10	12	14	16	18	20	22	24	26
1/2 Bust	45	47.5	50	52.5	55	57.5	60	62.5	65	67.5	70
Centre Back Length (Neck to Hem)	60	61	62	63	64	65	66	67	68	69	70
Sleeve Length (Crown to Cuff)	26	26.5	27	27.5	28	28.5	29	29.5	30	30.5	31



Contains
65%recycled
material

SHIRT & BLOUSE COLLECTION
BUSINESS ESSENTIALS

DESCRIPTION

Long sleeve, classiccollar, 1 button cuff.

FABRIC SPECIFICATION

Composition:

65% Polyester (Recycled), 35% Cotton

Weight: 115gsm/ Lightweight

SIZES

4 -30 regular

COLOUR

Available in 3 fabric colours:

A. White

B. Blue

D. Black

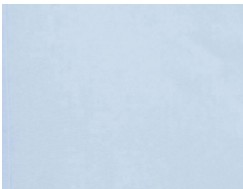
SELENE BLOUSE/ SEMI FITTED - 2270



D.



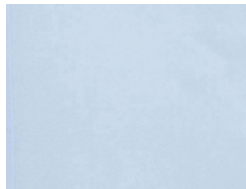
A.



B.



A.



B.



D.

WASH & AFTER CARE RECOMMENDATIONS



STeP



STANDARD
100



Do NOT
dry
clean



Cool
tumble dry



Easy
Iron



Wash with
similar
colours



Machine
Washable

GARMENT MEASURED FLAT & FASTENED (CM)

Size	4	6	8	10	12	14	16	18	20	22	24	26	28	30
1/2 Bust	43	45.5	48	50.5	53	55.5	58	60.5	36	65.5	68	70.5	73	75.5
Centre Back Length (Neck to Hem)	62	63	64	65	66	67	68	69	70	71	72	73	73	73
Sleeve Length (Crown to Cuff)	60	61	61	62	62	62.5	62.5	63	63	63.5	63.5	64	64	64



Contains
65%recycled
material

SHIRT & BLOUSE COLLECTION
BUSINESS ESSENTIALS

DESCRIPTION

Short sleeve, classiccollar.

FABRIC SPECIFICATION

Composition:

65% Polyester (Recycled), 35% Cotton

Weight: 115gsm/ Lightweight

SIZES

4 -30 regular

COLOUR

Available in 3 fabric colours:

A. White

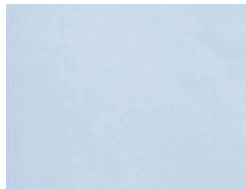
B. Blue

D. Black

EOS BLOUSE/ SEMI FITTED- 2271



A.



B.



D.

WASH & AFTER CARE RECOMMENDATIONS



Machine
Washable



Wash with
similar
colours



Easy
Iron



Cool
tumble dry



Do NOT
dry
clean



STANDARD
100



STeP

GARMENT MEASURED FLAT & FASTENED (CM)

Size	4	6	8	10	12	14	16	18	20	22	24	26	28	30
1/2 Bust	43	45.5	48	50.5	53	55.5	58	60.5	36	65.5	68	70.5	73	75.5
Centre Back Length (Neck to Hem)	62	63	64	65	66	67	68	69	70	71	72	73	73	73
Sleeve Length (Crown to Cuff)	23.2	23.9	24.6	25.3	26	26.7	27.4	28.1	28.8	29.5	30.2	30.9	30.9	30.9



FUNERAL AND FORMALWEAR

**FLAME CORPORATE CLOTHING
1A PARAMOUNT INDUSTRIAL ESTATE
SANDOWN ROAD
WATFORD
HERTFORDSHIRE
WD24 7XA**

TEL : 01923 256930/ 07857 073125

EMAIL : SALES@FLAMECORPORATECLOTHING.COM

WEB : WWW.FLAMECORPORATECLOTHING.COM