

Duthaus

Making space simple



Launch Release

3 × HAUS STUDIOS AVAILABLE

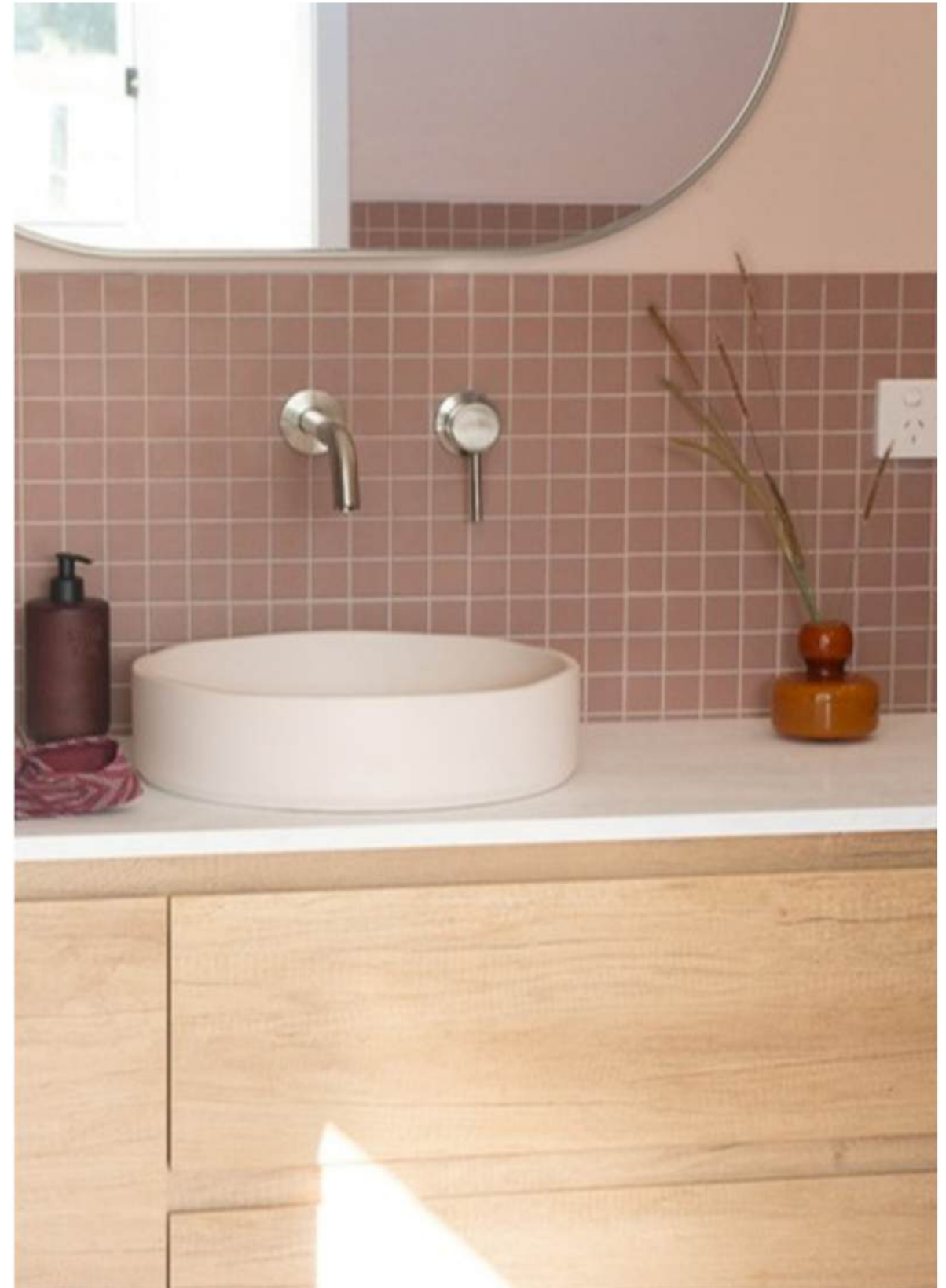
6.0 × 3.0 M · FULLY BUILT · READY NOW
\$105,00 INC GST EACH · IMMEDIATE PLACEMENT

Avoid the build queue. These units are complete and ready for immediate placement.

Once sold, all new orders revert to our standard 12-week build timeframe.

Installation, transport, and site works are not included and are quoted separately.
Installation by our team is available within 150 km of Brisbane. Outside this area, we can coordinate with your builder.

Call: 0481 866 238 · sales@outhaus.com.au
Book an inspection - by appointment only



LAUNCH COLLECTION



LAUNCH RELEASE

3 × HAUS STUDIOS

6.0 × 3.0 m • Fully Built • Ready Now

Limited release of three fully built studios available for immediate placement.

Ideal for: Guest suite • Airbnb / short-stay • Home office • Creative studio • Teen retreat • Downsizer alternative

Available Studios



Light Haus

Light, coastal palette with crisp architectural lines



Dark Haus

Bold, modern aesthetic with strong contrast



Earth Haus

Classic form with a contemporary edge

Note: All units share the same internal layout and specification.

Call: 0481 866 238 • sales@outhaus.com.au
Clayfield HQ • Lacey Creek Display (by appointment)

Light Haus

Light Haus is about calm clarity.

Soft coastal tones, crisp architectural lines, and spaces that feel open, grounded, and easy to live in.

Think:

- sun-washed mornings
- clean geometry
- materials doing the talking
- nothing loud, nothing fussy

It's modern coastal without the beach shack clichés.



Dark Haus

6.0 × 3.0 m Studio

Dark Haus is defined by contrast and restraint. A Monument-wrapped exterior with sharp lines and a grounded, architectural presence. Inside, rich tones and tactile finishes create a space that feels calm, warm, and intentional.

Think:

- Shadow and light
- Strong geometry
- Depth over decoration
- Quiet confidence

Bold, but never loud.



Earth Haus

6.0 × 3.0 m Studio

Earth Haus is warm, grounded, and quietly architectural. A light, natural palette designed to feel calm, timeless, and easy to live with — spaces that soften over time rather than date.

Think:

- Natural light
- Soft earth tones
- Honest materials
- Calm, balanced living

Understated. Grounded. Enduring.





outhaus.au

More space. Without the build

Designed and built in Queensland, each Haus is a Class 1a-ready micro-home with premium materials and a refined architectural finish.

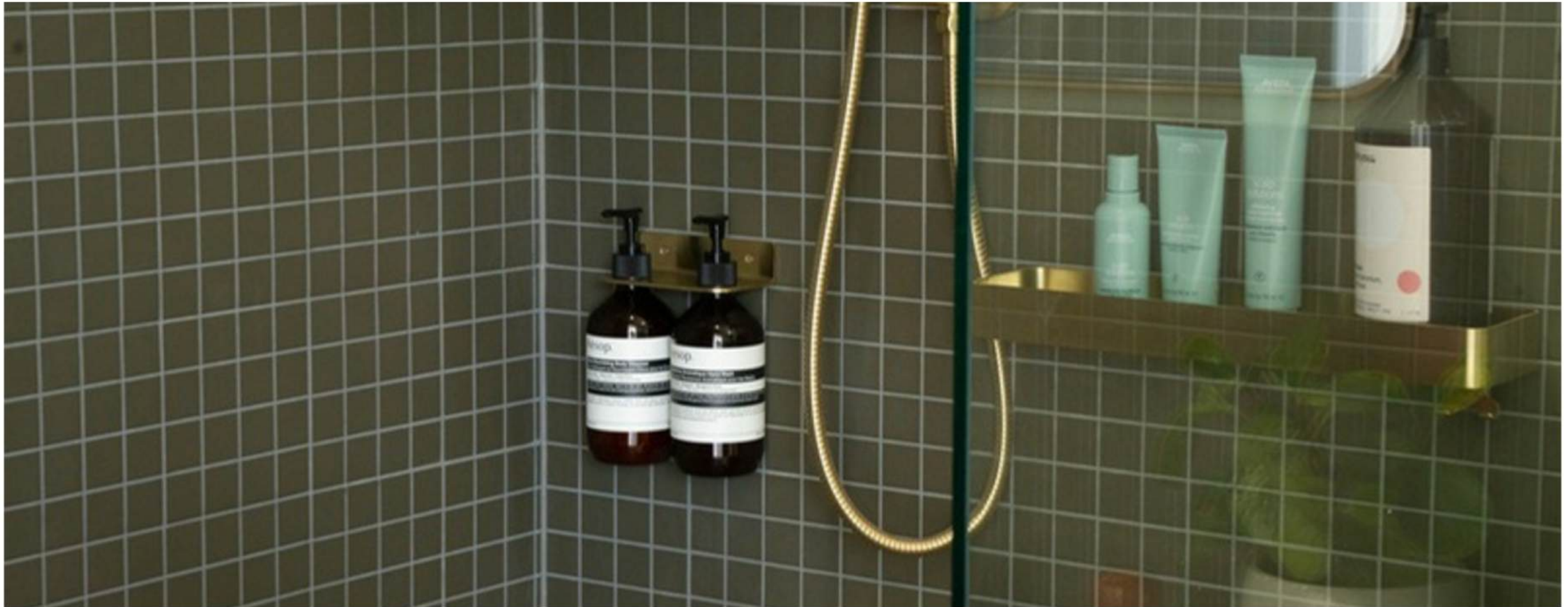
This is real small-home living, not a pod — delivered fully built in an 18 m² footprint.

- ✓ No long build time
- ✓ No decision fatigue
- ✓ Ready now

■
Outhaus

Outhaus delivers real homes to your backyard — finished, compliant, and ready to use.

No mess. No months of disruption. No living in a construction zone.



Outhaus Premium Build

- Integrated kitchenette with dedicated workspace
- Full 4.5 m² fully tiled bathroom
- Large-format windows with sliding glazed door
- Mitsubishi Heavy Industries A/C installed
- Architectural Axon cladding
- Bradmans aluminium windows & doors
- Blackbutt hybrid flooring
- Colorbond roofing with R5 insulation
- Fully insulated steel and timber structure
- ABI Interiors fixtures and premium finishes throughout

Approvals

Engineered as a Class 1a-ready dwelling
(Final approval subject to council and site conditions)

Delivery

- Delivered fully built
- Crane-liftable onto prepared site
- Designed for efficient transport and placement



2026
Haus Range

3.5M Wide Series

Four sizes, one design language – the H5 to H8 series scales from backyard studio to full micro-home.

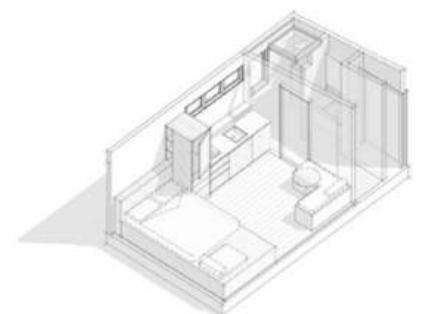
Built off-site in Queensland and delivered nationwide.

Model	Full Dimensions (L × W × H m)	Internal Area (m ²)	Deck Area (m ²)	Total Living Area (m ²)	Name / Use Case	Description / Purpose	Starting From
H5 – Workhaus (3.5)	4.8 × 3.5 × 3.2	16.8	16.8	33.6	Workhaus / Creative Pod	Same compact footprint with extra width for better desk + sofa flow. Ideal for work-from-home, art, or therapy spaces.	\$87,500 +
H6 – Studio (3.5)	6.0 × 3.5 × 3.2	21	21	42	Studio / Guest Retreat	Wider kitchenette, extra storage, and a roomier bathroom. Balanced layout for backyard or guest use.	\$105,000 +
H7 – Weekender (3.5)	7.2 × 3.5 × 3.2	25.2	25.2	50.4	Tiny Home / Secondary Dwelling	Clear separation between living + sleep zones. Great for Airbnb, farm, or coastal setups.	\$128,500 +
H8 – Full Haus (3.5)	8.4 × 3.5 × 3.2	29.4	29.4	58.8	Micro-Home / Cabin	Full kitchen + living space with improved proportions. Designed for long-term small-home comfort.	\$151,500 +

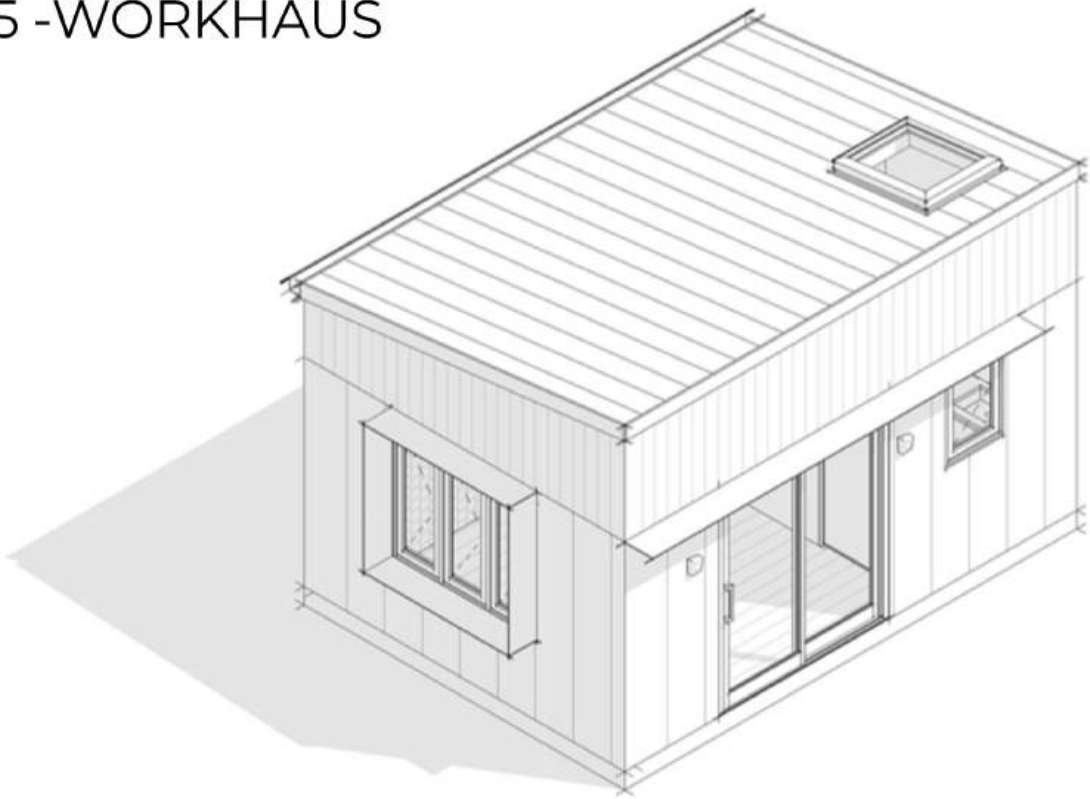
Optional full-length decks can effectively double the usable living area, creating seamless indoor–outdoor space.

- Decks are optional
- Deck area may not count toward GFA depending on council
- Pricing excludes deck unless stated

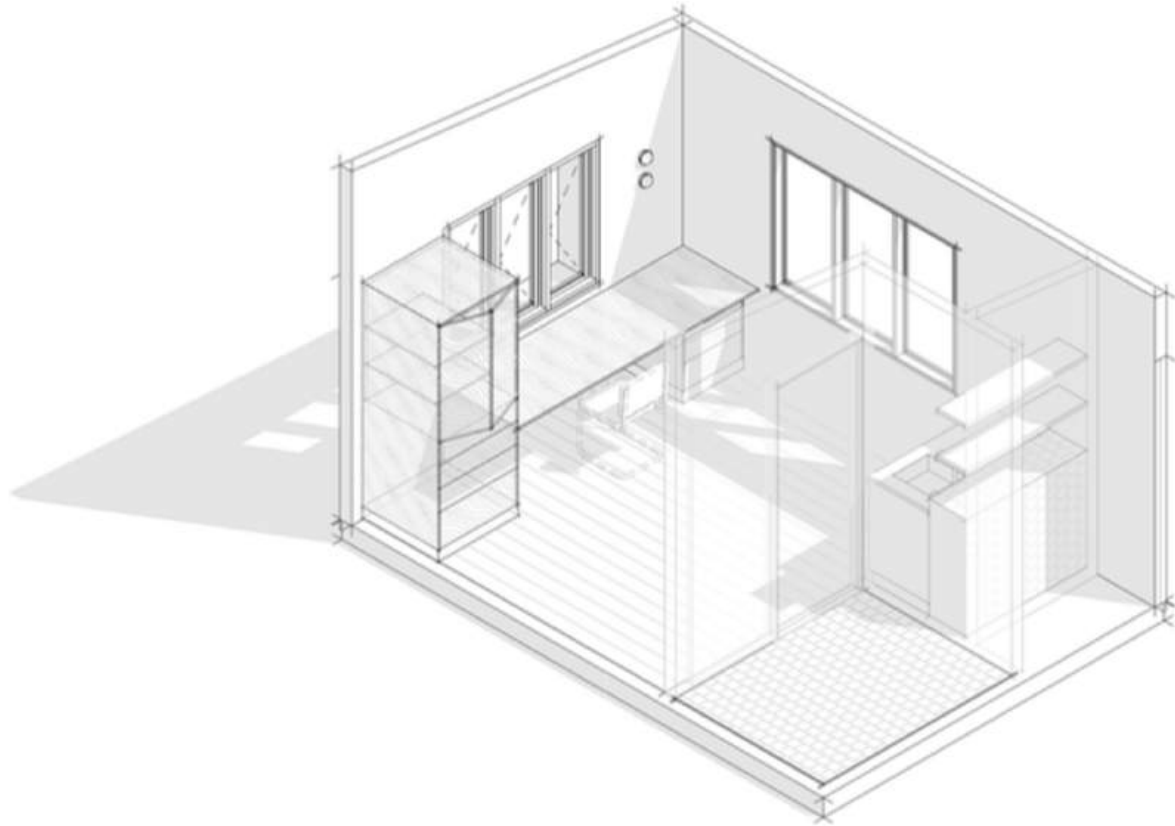
Outhaus



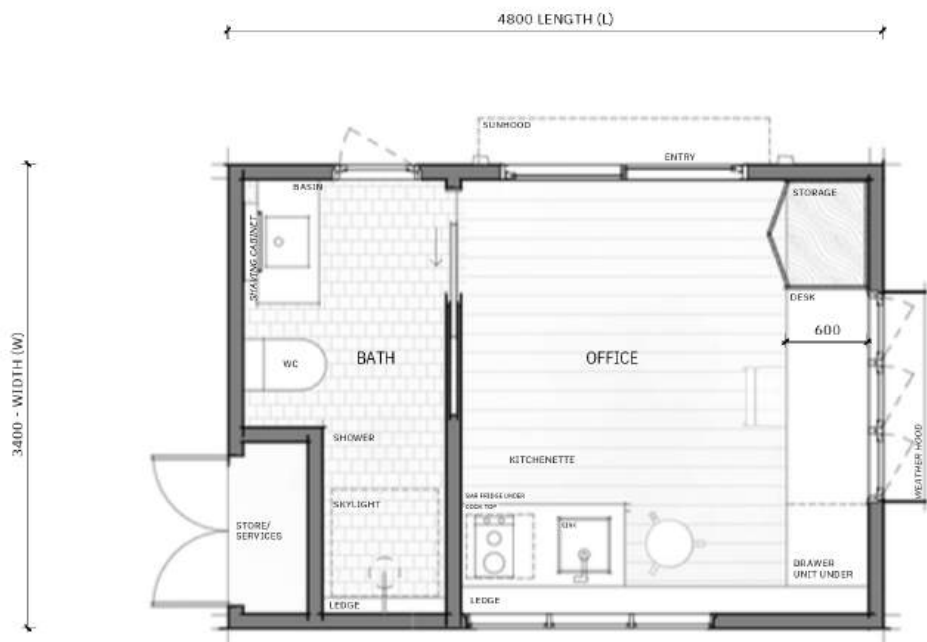
H5 -WORKHAUS



H5 -WORKHAUS 4.8 m (L) x 3.5 m (W)



H5 -WORKHAUS (NO SHOWER) 4.8 m (L) x 3.5 m (W)



Outhaus

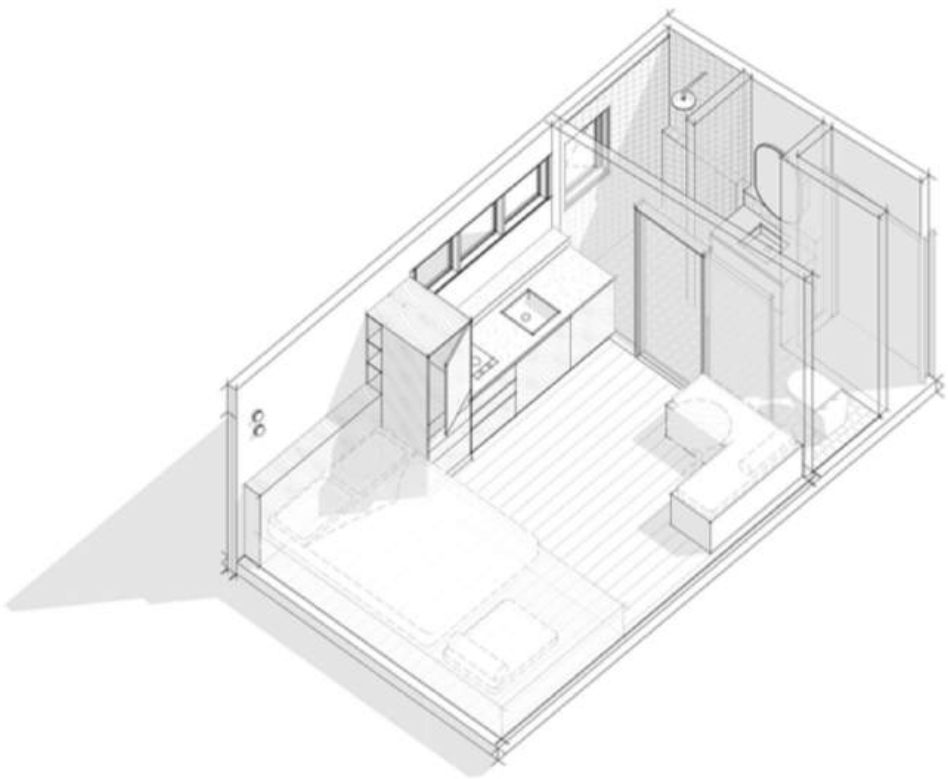
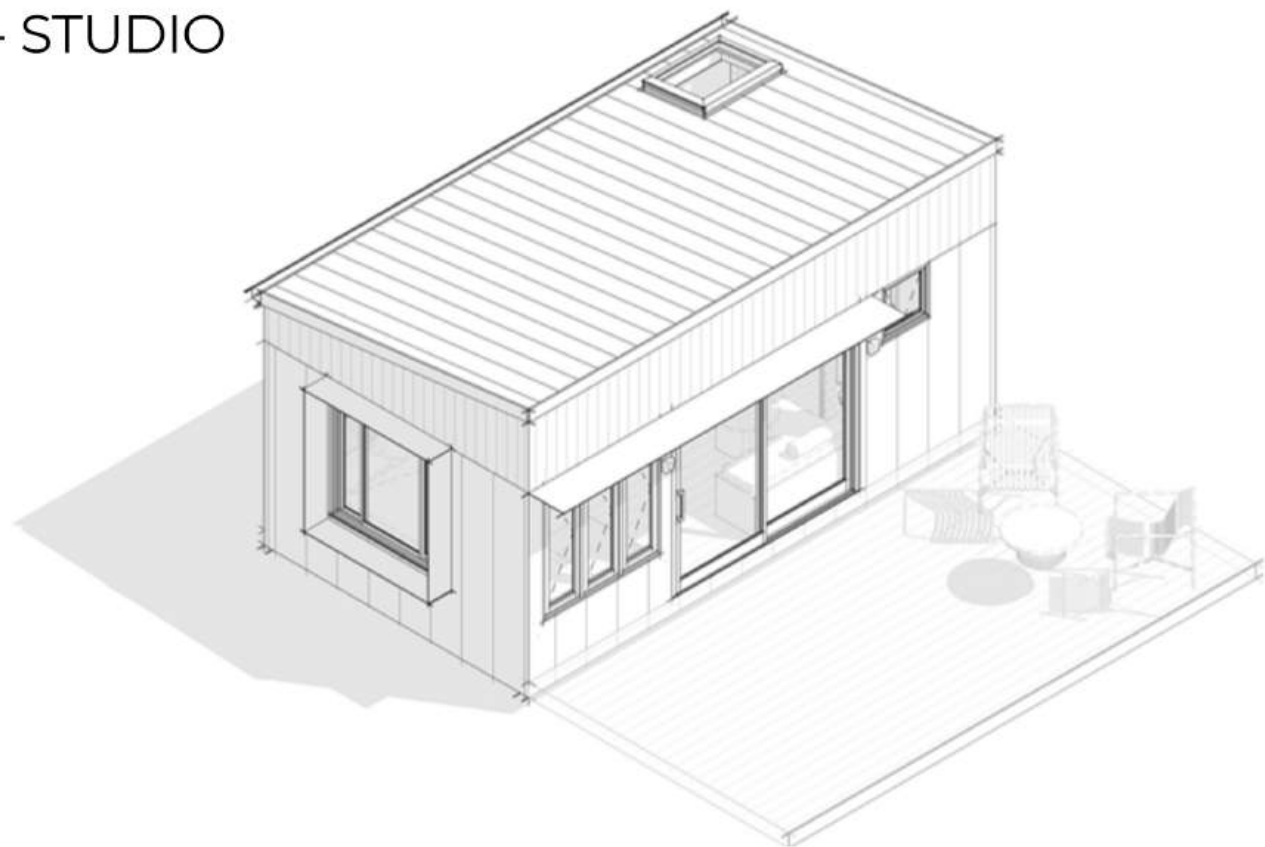
PALM HILL ARCHITECTS

SD_A 5052 H5 -INTERIOR PERSPECTIVE

@ A3

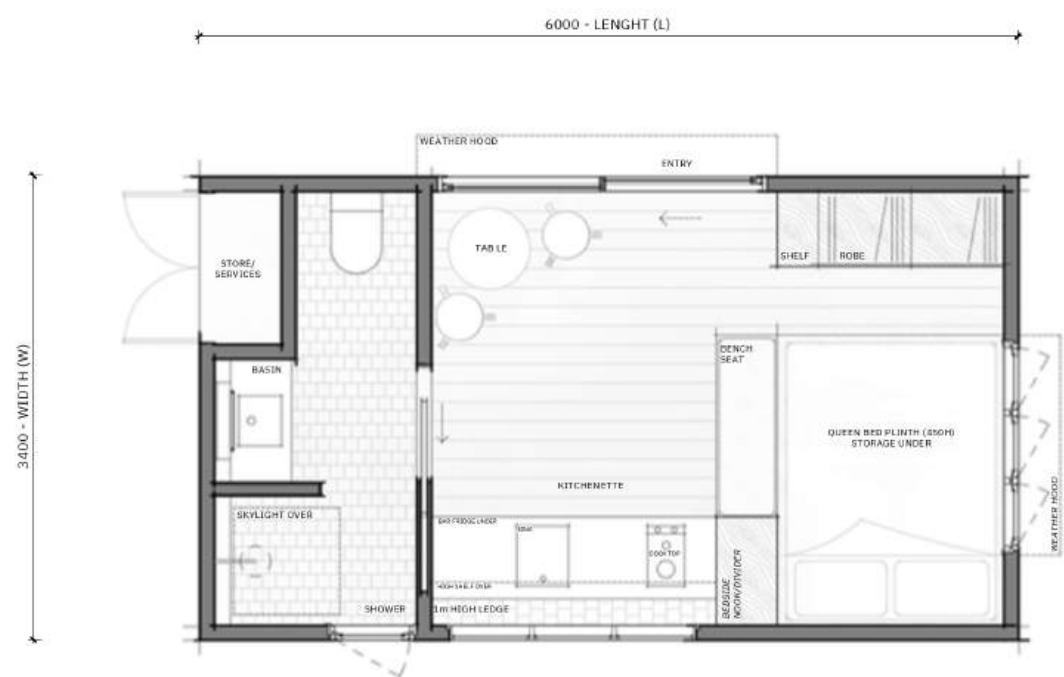
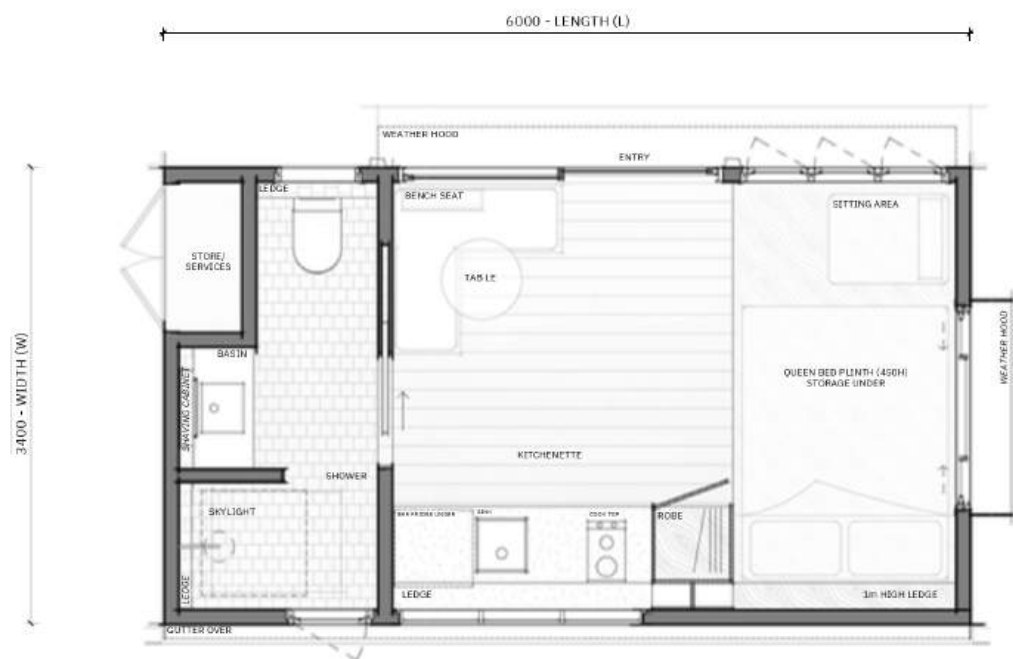
OUTHAUS -25-004

H6 - STUDIO

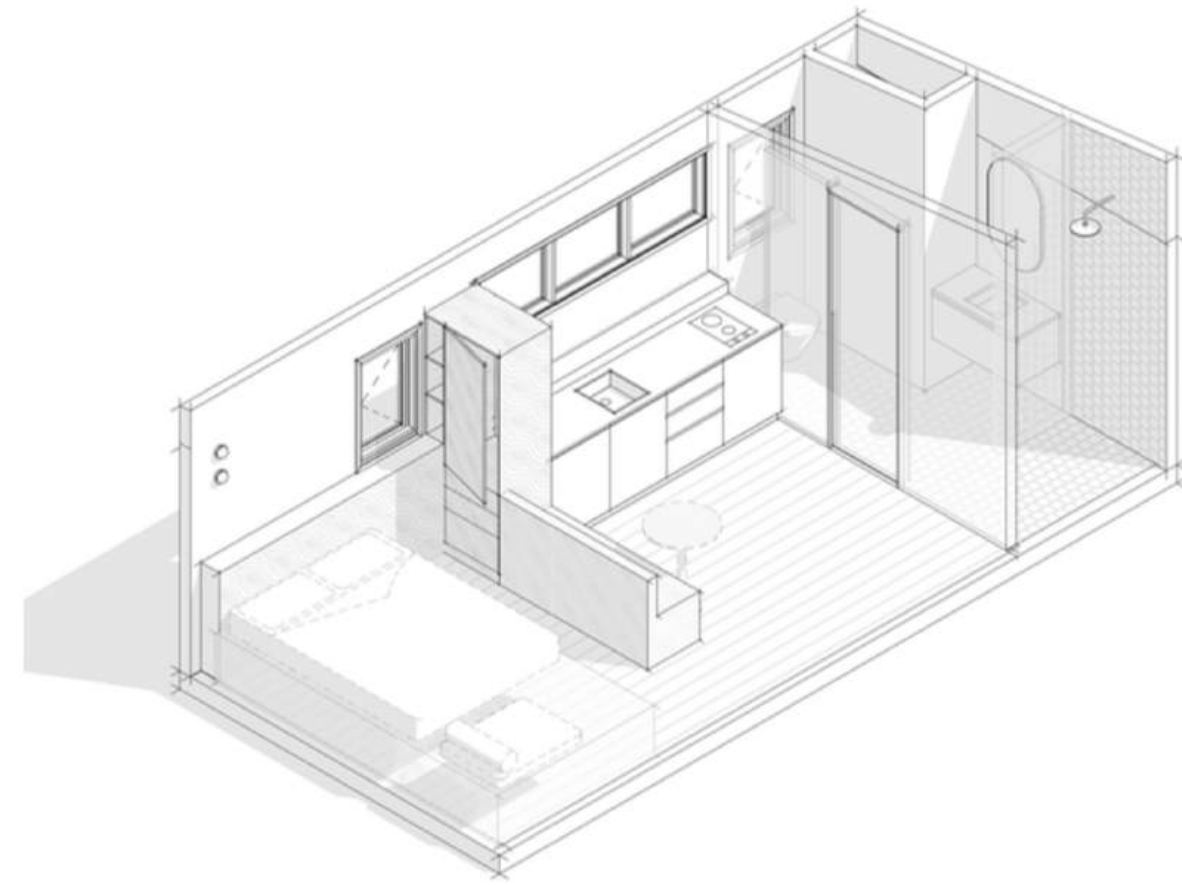
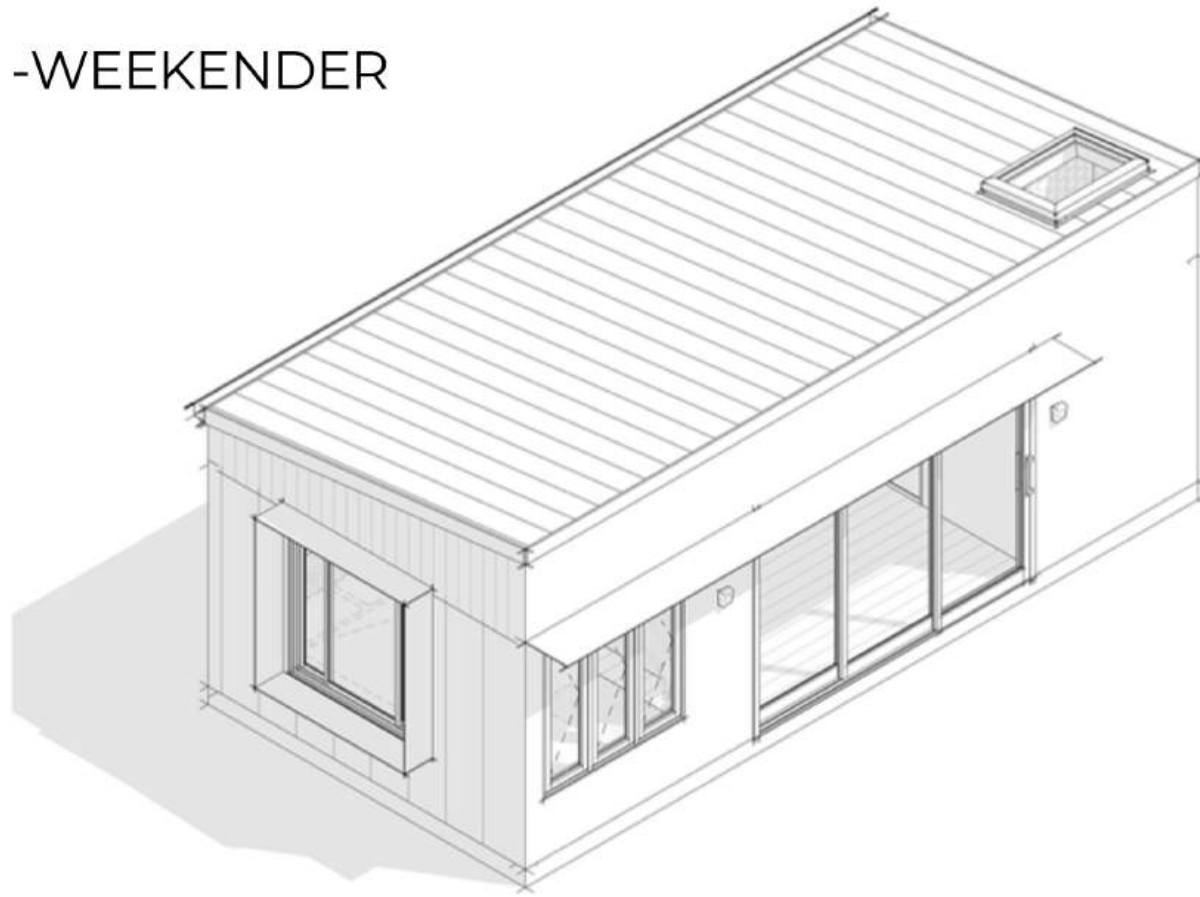


H6-STUDIO A 6 m (L) x 3.5 m

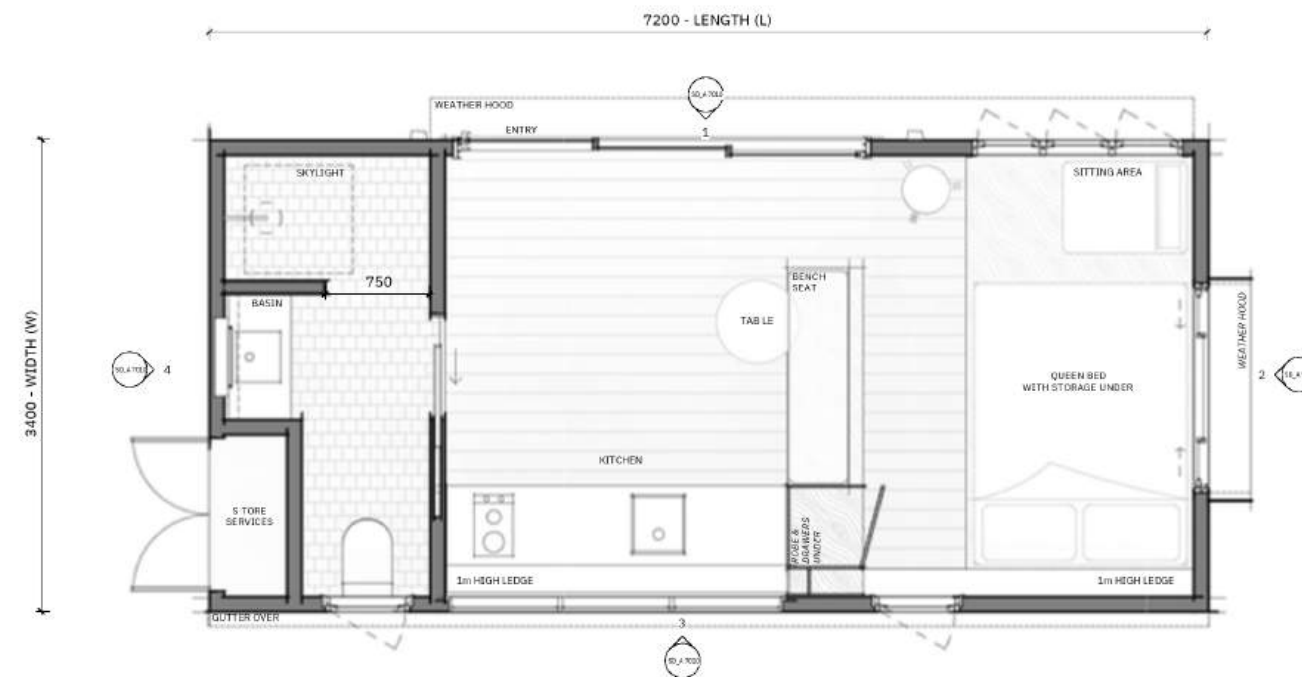
H6-STUDIO B 6 (L) x 3.5 (W)



H7 -WEEKENDER



H7 -WEEKENDER 7.2 (L) x 3.5 (W)



Outhaus

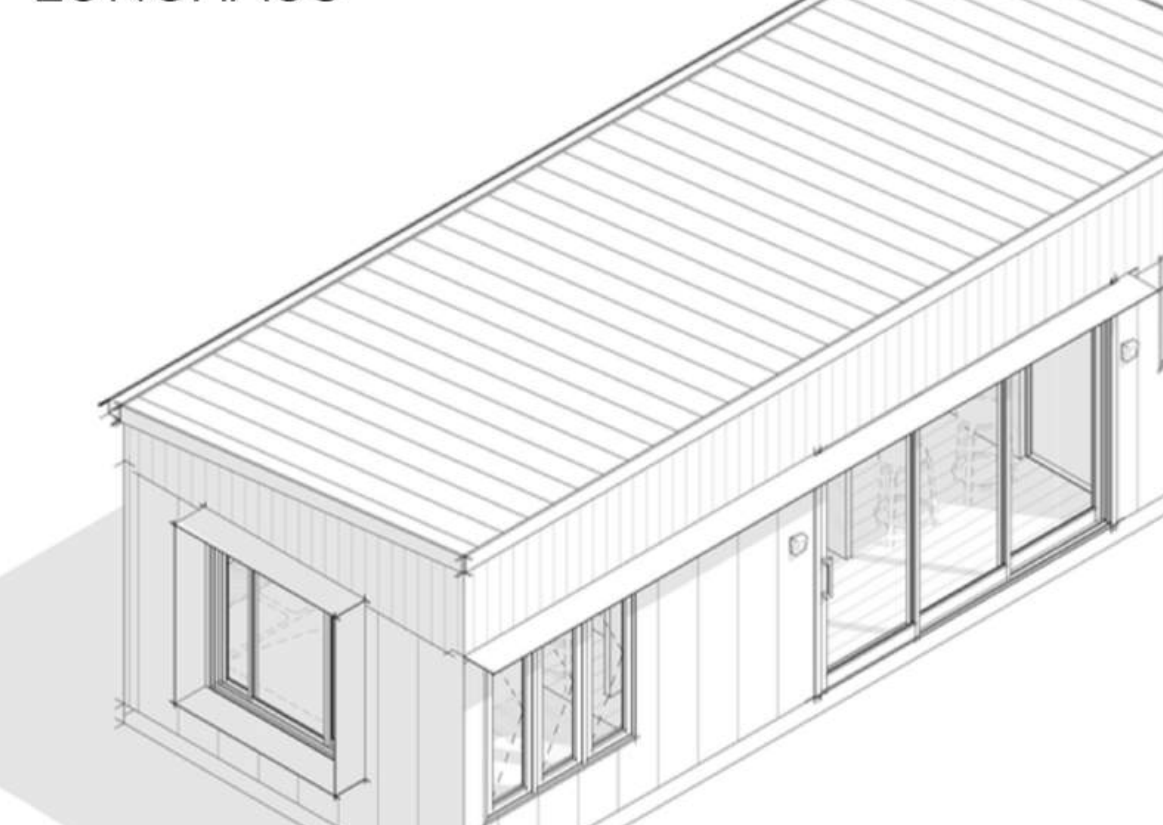
PALM HILL ARCHITECTS

SD_A 7051 H7 -EXTERIOR PERSPECTIVE -FRONT

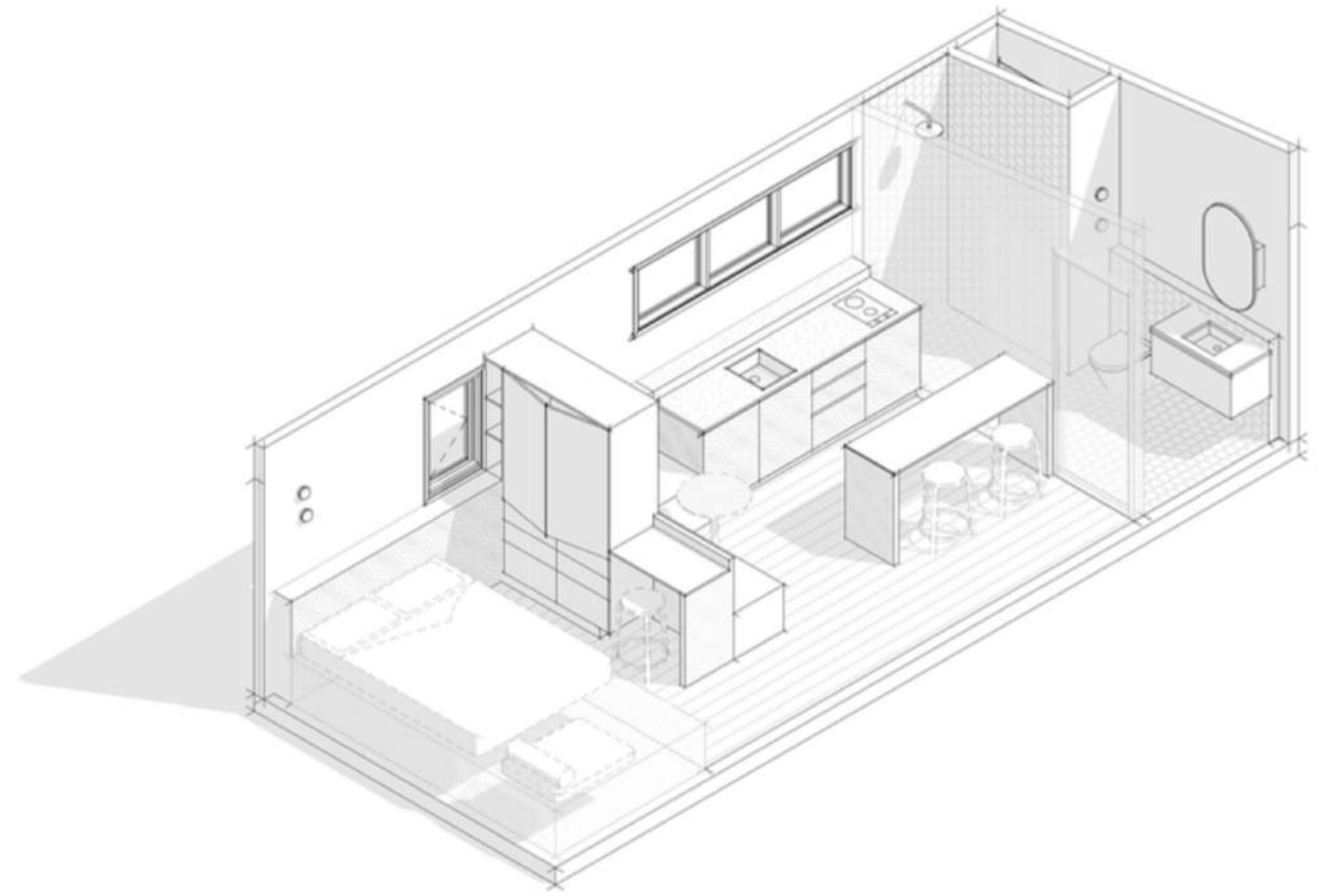
@ A3

OUTHAUS -25-004

H8 - LONGHAUS



A 3D isometric line drawing of the H8 - LONGHAUS container house. The structure is a long, rectangular building with a flat roof made of horizontal corrugated metal sheets. The exterior walls are composed of vertical corrugated metal panels. On the left side, there is a large window with a small overhang. The front facade features a glass door and a large glass window, providing a view into the interior which shows some furniture. To the right of the glass door is a smaller window. The building is shown from an elevated perspective, casting a soft shadow on the ground.



8400 - LENGTH (L)

3400 - WIDTH (W)

Labels in the plan include: WEATHER HOOD, ENTRY, SITTING AREA, QUEEN BED PLINTH WITH UNDER BED STORAGE, 1m HIGH LEDGE, HIGH SHELF OVER, KITCHEN, BREAKFAST BAR - MOVABLE, BENCH SEAT, DECK/CONCRESSOR, ROBE, HANGERS, UNDER B, SKYLIGHT, WC, BASIN, STORE & SERVICES, SHOWER, GUTTER OVER, and various window labels like SLA 2002, SLA 2001, and SLA 2003.

PALM HILL ARCHITECTS

OUTHAUS -25-004



Outhaus

More space. Without the build

Outhaus Modular Pty Ltd

Brisbane Office: 515 Sandgate Road, Clayfield QLD 4011

Dayboro Ranch: 472 Laceys Creek Road, Laceys Creek QLD 4521

Phone: 0489 260 274

Email: info@outhaus.com.au

Web: www.outhaus.com.au

