



SpECTite WTA Latex

POLYMER MODIFIED WATERPROOF MORTAR/ADHESIVE FOR CERAMIC, STONE AND MARBLE TILES

DESCRIPTION

SpECTite WTA Latex is a two component waterproof mortar, consisting of a powder component and a liquid component.

TYPICAL USES

- Installation of ceramic, stone and marble tiles over masonry, concrete and wooden type surfaces. Application areas include interior and exterior, wet and dry areas, walls, floors and ceilings.
- Interior and exterior use over concrete, plaster, masonry, blockwork and gypsum boards

ADVANTAGES

- Flexible and shock resistant
- Easy to use
- Economical

TECHNICAL DATA

Pot life @ 25°C	20 minutes
Colour	grey or white

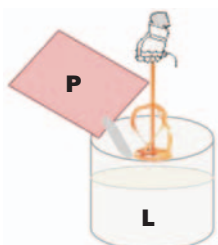
APPLICATION INSTRUCTIONS

Surface Preparation

Substrates should be structurally sound, free from dust, dirt, grease, sealers and curing compounds. Remove old paints, coatings and adhesives. Pre-wet porous substrates but remove standing water.

Mixing

SpECTite WTA Latex is supplied as a two component pack consisting of a liquid component and a powder component.



In a clean mixing vessel pour the total contents of the liquid component and slowly add the powder component whilst mixing using a slow speed drill

(300 rpm) and paddle. Mix until smooth consistency is obtained (2-3 minutes). Leave to stand for 10 minutes and remix.

Application

Apply **SpECTite WTA Latex** to a clean substrate with the flat edge of the trowel, then comb the product to the desired profile with the notched side of the trowel. Tap the tile with a rubber mallet to fully embed in the adhesive.

EQUIPMENT CLEANING

Tools and equipment should be cleaned immediately using water, as on hardening the material may only be removed mechanically.

PACKAGING AND YIELD

SpECTite WTA Latex is supplied as a 30kg pack consisting of 25kg of powder and 5 kg of liquid. The yield is approximately 14 litres.

Coverage

- 9.50 m²/pack using a 3mm x 3mm notched trowel
- 4.50 m²/pack using a 6mm x 6mm notched trowel
- 2.50 m²/pack using a 12mm x 12mm notched trowel

HEALTH AND SAFETY

SpECTite WTA Latex powder contains alkalis and protection should be provided to prevent contact with skin and eyes. Inhalation of dust must be avoided whilst mixing. Gloves, goggles and a dust mask must be worn.

Eye contact

Rinse with copious amounts of clean water and seek medical attention.

Skin contact

Rinse with copious amounts of clean water followed by thorough cleaning with soap and water.

DO NOT USE SOLVENTS.

Issue 5: 05/2011

QA-054

Whilst the information and/or specifications given are, to the best of our knowledge, true and accurate, no warranty is given or implied in connection with any recommendations or suggestions made by us, our representatives, agents or distributors as the conditions of use and labour involved are beyond our control.

If it is proven that the product does not perform as described in our TDS, SpEC's liability extends solely to the free replacement of product, once the claim has been accepted after due investigation by SpEC. SpEC will not entertain any claims involving any form of consequential costs or damages such as shipping costs, custom duties, damages to third parties, damages to structures, penalties from delay of a project or any other form of consequential damage.

SPECIALITY ENGINEERING CHEMICALS

PO Box 61347, Dubai, United Arab Emirates. Telephone: +971 4 883 6662, Fax: +971 4 883 7696

E-mail: info@spec.ae; Skype ID: [spec.sales](https://www.skype.com/en/contacts/spec.sales)

www.spec.ws