

# AT METALWORKS PTY LTD – POOL FENCING

## SLIMLINE ROUND

Aluminium – 50x10mm flatbar frames with 12mm round bar uprights. Powder coated to your choice of colour.

Can be installed into most surfaces including concrete, paving, garden or deck.

Notes – best visibility into the pool.





# AT METALWORKS PTY LTD – POOL FENCING

## SLIMLINE FLATBAR

Aluminium – 50x10mm flatbar frames with 50x8mm flatbar uprights. Powder coated to your choice of colour.

Can be installed into most surfaces including concrete, paving, garden, or deck.

Notes: better for privacy than Slimline Round as can block view to the pool due to upright depth – not as good if you wish to have a clear view into the pool.





# AT METALWORKS PTY LTD – POOL FENCING

## MEDIUM BLADES

As per display at AquaTechnics O'Connor.

75x25mm rectangular aluminium blades with fully welded end caps. Powder coated to your choice of colour.

Recommended installation is into ground with hidden bottom rail. Can be bolted down to concrete or walls.



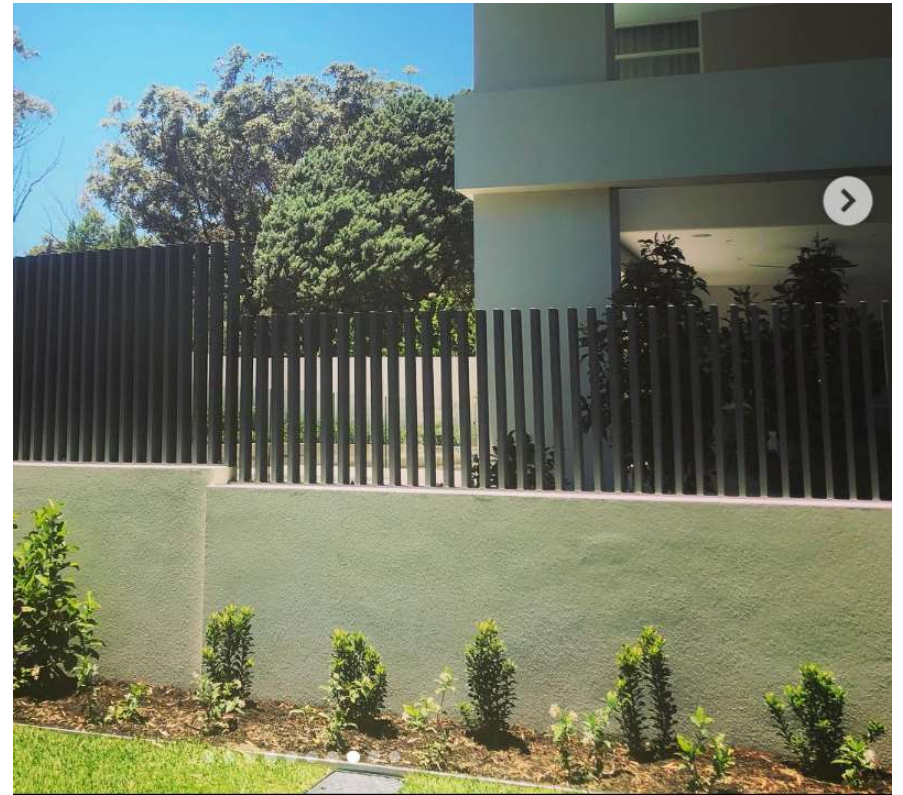
# AT METALWORKS PTY LTD – POOL FENCING

## LARGE BLADES

100x25mm aluminium rectangular blades with fully welded end caps. Powder coated to your choice of colour.

Recommended installation is into ground with hidden bottom rail. Can be bolted down to concrete or walls.

Notes – good for privacy as can block view to the pool due to blade depth – not great if you wish to have a clear view into the pool.





# AT METALWORKS PTY LTD – POOL FENCING

## POOL POLES

Round steel uprights with fully welded end caps. Powder coated to your choice of colour.

Inground installation only with hidden bottom rail.

Notes – fabricated from steel rather than aluminium for strength. If required very close to the coast perhaps additional cost for hot dip galvanising  
Good visibility into the pool due to round profile of uprights.



# AT METALWORKS PTY LTD – POOL FENCING

## ADDITIONAL NOTES

### Process:

Our fencing is custom made so in most cases we can't do the final measure until structures are in place such as retaining walls, paving, concrete, etc. We custom make to fit perfectly so we cannot make beforehand.

We then need to fabricate and have powder coated so we need 4-5 weeks following final measure before we can install.

Temporary fencing is not included in cost, however we can arrange at an extra cost if needed.

Curves look amazing! However the rolling of the steel is done by a specialist bender so this is part of the wait time if you choose to have curves. It is worth the wait!

### Installation methods:

Blades and Pool Poles are best installed into the ground with a hidden bottom rail. Not only does it look better but it can be stronger. If walls are hollow or not completely level it can make the installation problematic and compromise the strength of the product.

See examples at <https://www.atmetalworks.com.au/gallery> or [https://www.instagram.com/at\\_metalworks/](https://www.instagram.com/at_metalworks/) of how our customers have chosen to install & landscape around their fencing.

### Earthing

Metal items within 1.25m of the waters edge needs to be earthed by a licensed electrician. See [www.dmirs.wa.gov.au](http://www.dmirs.wa.gov.au) for more information.

### Quotes

Please email [quotes@atmetalworks.com.au](mailto:quotes@atmetalworks.com.au) to arrange a quote.

