



# THE ThermaCore

GARDEN ROOM

## You will need:



Cordless Drill



Clamp



Hammer/Mallet



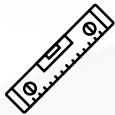
Ladders



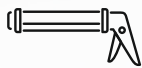
Hand Saw



Stanely Knife



Sprirt Level



Sealant Gun

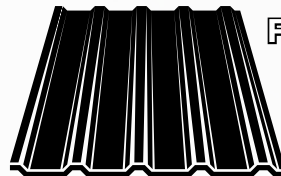


Roofing Stapler

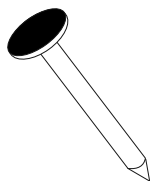
## In your kit you will find:



M4x40mm  
M4x30mm  
M5 x 70mm  
M5 x 70mm



Felt



Polypins



Sealent



Packers



# Put together the framework:

1



Lay and secure the base sections using 90mm screws. Screw each base section together from underneath to each rafter.

2.1



Place the section labeled 'Back Right' into the back right corner of the base. Ensure the section runs flush with base before screwing down into the base with 70mm screws.

2.2



Using 70mm screws, screw down along the orange line illustrated into the base.

3.1



Place a 'Right Side' wall section flush against the 'Back Right' wall section you have secured in step 2.



### 3.2



Using 40mm screws, screw the 'Right Side' section into the 'Back Right' section (along the red line) and using 70mm screws, screw into the base along the bottom (orange line)

### 3.3



Repeat step 3.1 until all the 'Right Side' wall sections are secured.

### 3.4



Repeat step 3.2 until all the 'Right Side' wall sections are secured.

### 4.1



Find the 'Back Middle' sections, and secure in place, next to the 'Back Right' wall section.



### 3.2



Using 40mm screws, screw the 'Right Side' section into the 'Back Right' section in a zigzag form (along the red line) and using 70mm screws, screw into the base along the bottom (orange line)

### 3.3



Repeat step 3.1 until all the 'Right Side' wall sections are secured.

### 3.4



Repeat step 3.2 until all the 'Right Side' wall sections are secured.

### 4.1



Find the 'Back Middle' sections, and secure in place, next to the 'Back Right' wall section.



# 4.2



Find the 'Back Middle' sections, and secure in place, next to the 'Back Right' wall section using 70mm screws into the base and 40mm into the adjoining wall sections.

# 4.3



Place the section labelled 'Back Left' into the back left corner of the base. Ensure the section runs flush with the base and adjoining wall section before screwing down into the base with 70mm screws and 40mm screws into the adjoining wall sections.

# 4.4



Find the sections labelled 'Left Side' and repeat steps 3 until wall sections are secured.

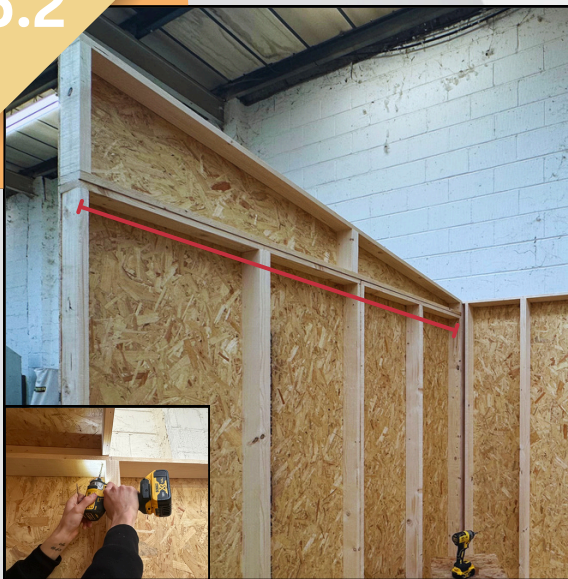
# 5.1



Find the section labelled 'Right Top' and place on top of the right wall sections, with the smaller section placed toward the back. Screw into place using 40mm screws along the red line.



5.2



Repeat previous step for the section labelled 'Left Top'.

6.1



Find the 'Front Left' section, and secure in place into the left side wall sections, using 40mm screws into the walls and 70mm into the base.

6.2



Find the 'Front Right' section, and secure in place into the 'Front Left' section and the right side wall sections, using 40mm screws into the walls and 70mm into the base.

6.3



Find the 'Front Top' section, and secure in place on top of the front wall sections using 40mm screws.



7.1



Find 'Roof Pod 1' and lift on top off the framework, ensuring the back and side runs flush with the walls.

7.2



Secure 'Roof Pod 1' by using 70mm screws up into the rafters of the roof pod, illustrated by the orange dot.

7.3



Repeat step 7.1 with 'Roof Pod 2', securing in the same place illustrated in step 7.2.

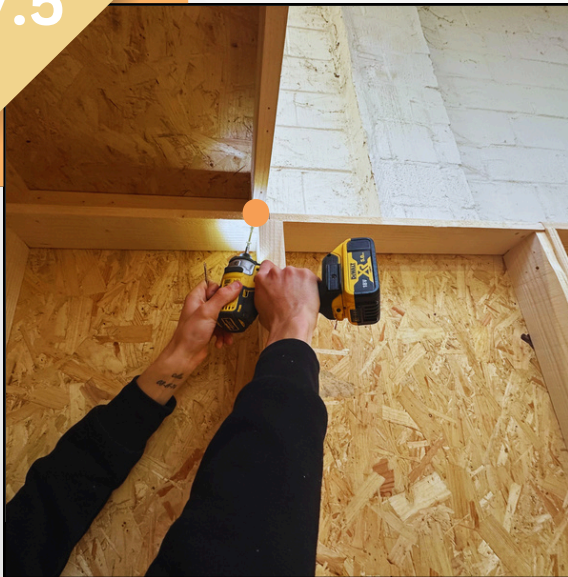
7.4



Secure the roof pods by screwing them together along the rafters (red line) using 40mm screws.



7.5



Repeat step 7.2 with 'Roof Pod 2', securing in the same place illustrated by the orange dot.

7.6



Repeat steps 7 with all roof pods, until roof is complete.

7.7



Repeat steps 7 with all roof pods, until roof is complete.

8



Place the insulation into the corresponding wall and roof sections.



# Install your windows & doors:

1.1



Find your window cill and place into the window gap. Using 70mm screws, screw through your window cill into the framework, going through the plastic strip on the cill.

1.2



Lift window frame into place and use the supplied packers to create an even gap all around the window frame. Ensure the window is flush with the inside wall.

1.3



Using 90mm screws, screw through the bottom of the window frame to secure onto the cill.

1.4



Using 70mm screws, secure the sides by screwing again through the plastic strip into the framework, preferably through the placed packers.



1.5



Using 70mm Screws, secure the top of your window frame through the plastic strip into the frame work, preferably through the placed packers.

2.1



Find your door cill and place into the gap for your door.

2.3



Using 70mm screws, screw your door cill into the base, ensuring the back of your cill runs flush with the inside of the framework.

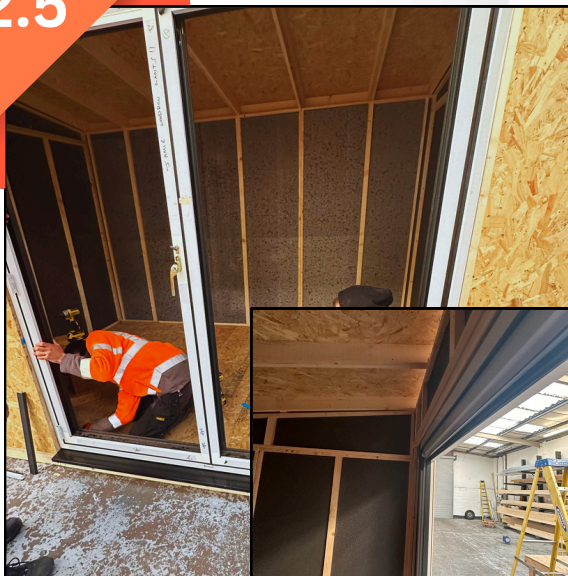
2.4



Remove the glass beading from the inside of your door frame.



2.5



Put your door frame in place on top of your door cill ensuring the door frame runs flush with the inside of the framework. Use the supplied packers to create an even gap around the door frame.

2.6



Using 90mm Screws, screw the bottom of your door frame into the door cill. Screw along the plastic strip.

2.7



Using 70mm screws, screw the door frame to the framework, through the plastic strip along the sides and top. Preferably screw through the packers to secure them in place.

2.8



Once door is screwed and secured, place the beading back into the door frame.



### 3.1



Put your door frame in place on top of your door cill ensuring the door frame runs flush with the inside of the framework. Use the supplied packers to create an even gap around the door frame.

### 3.2



Using 90mm Screws, screw the bottom of your door frame into the door cill. Screw along the plastic strip.

### 3.3



Using 70mm screws, screw the door frame to the framework, through the plastic strip along the sides and top. Preferably screw through the packers to secure them in place.