

RESIDENCE

17

LEVEL 3-7

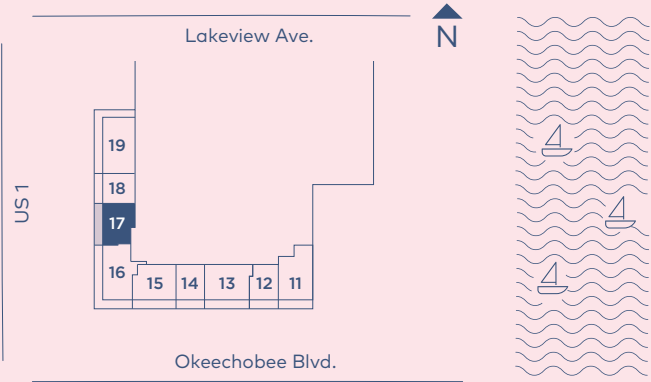
1 Bedrooms

1.5 Bathrooms

INTERIOR: 996 SQ. FT. 93 SQ. M.

BALCONY: 258 SQ. FT. 24 SQ. M.

TOTAL: 1254 SQ. FT. 117 SQ. M.



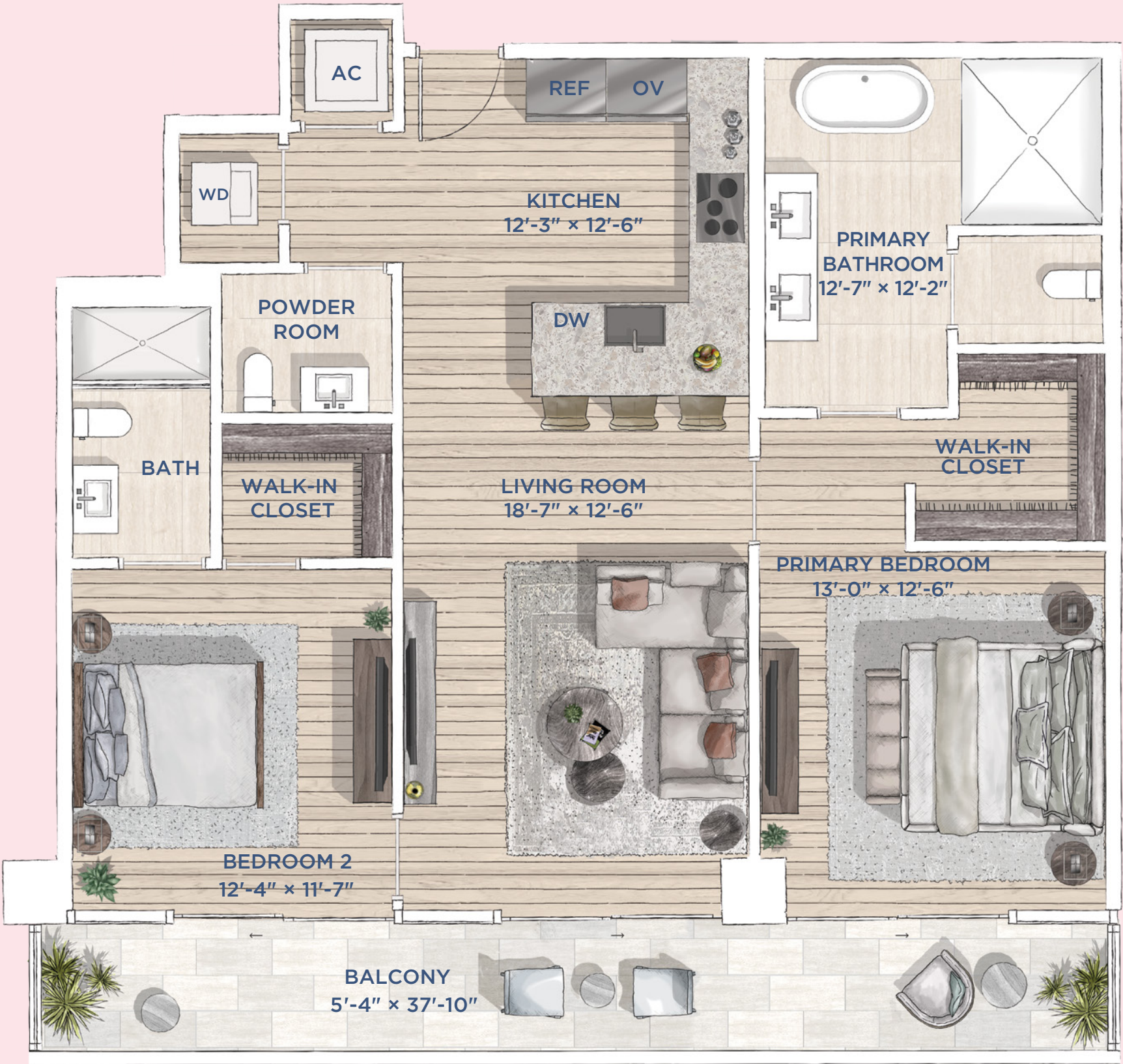
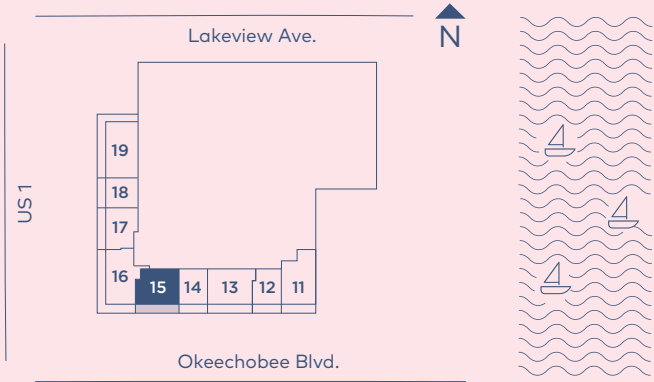
Exclusive Sales and Marketing by Douglas Elliman Development Marketing

Stated square footages and dimensions are measured to the exterior boundaries of the exterior walls and the centerline of interior demising walls and in fact vary from the square footage and dimensions that would be determined by using the description and definition of the "Unit" set forth in the Declaration (which generally only includes the interior airspace between the perimeter walls and excludes all interior structural components and other common elements). This method is generally used in sales materials and is provided to allow a prospective buyer to compare the Units with units in other condominium projects that utilize the same method. Measurements of rooms set forth on this floor plan are generally taken at the farthest points of each given room (as if the room were a perfect rectangle), without regard for any cutouts or variations. Accordingly, the area of the actual room will typically be smaller than the product obtained by multiplying the stated length and width. All dimensions are estimates which will vary with actual construction, and all floor plans, specifications and other development plans are subject to change and will not necessarily accurately reflect the final plans and specifications for the development. 🏠

RESIDENCE
15
LEVEL 3-7

2 Bedrooms
2.5 Bathrooms

INTERIOR: 1166 SQ. FT. 108 SQ. M.
BALCONY: 234 SQ. FT. 22 SQ. M.
TOTAL: 1400 SQ. FT. 130 SQ. M.



Exclusive Sales and Marketing by Douglas Elliman Development Marketing

Stated square footages and dimensions are measured to the exterior walls and the centerline of interior demising walls and in fact vary from the square footage and dimensions that would be determined by using the description and definition of the "Unit" set forth in the Declaration (which generally only includes the interior airspace between the perimeter walls and excludes all interior structural components and other common elements). This method is generally used in sales materials and is provided to allow a prospective buyer to compare the Units with units in other condominium projects that utilize the same method. Measurements of rooms set forth on this floor plan are generally taken at the farthest points of each given room (as if the room were a perfect rectangle), without regard for any cutouts or variations. Accordingly, the area of the actual room will typically be smaller than the product obtained by multiplying the stated length and width. All dimensions are estimates which will vary with actual construction, and all floor plans, specifications and other development plans are subject to change and will not necessarily accurately reflect the final plans and specifications for the development.

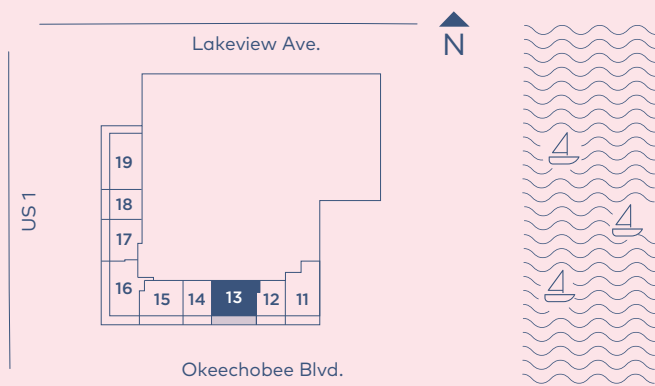
RESIDENCE

13

 LEVEL 2-7

2 Bedrooms
 2.5 Bathrooms

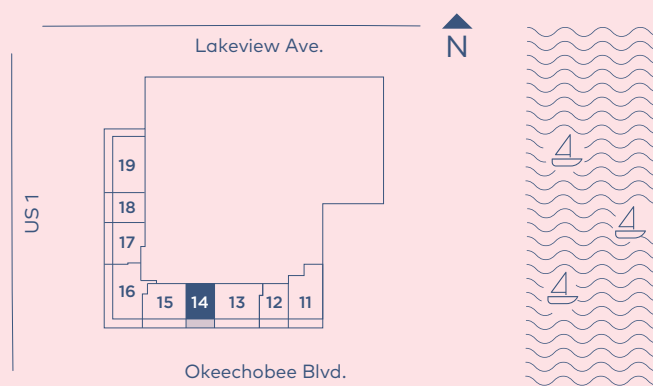
INTERIOR: 1201 SQ. FT. 112 SQ. M.
 BALCONY: 338 SQ. FT. 31 SQ. M.
 TOTAL: 1539 SQ. FT. 143 SQ. M.





1 Bedroom
1.5 Bathrooms

INTERIOR: 830 SQ. FT. 77 SQ. M.
BALCONY: 156 SQ. FT. 15 SQ. M.
TOTAL : 986 SQ. FT. 92 SQ. M.



Exclusive Sales and Marketing by Douglas Elliman Development Marketing

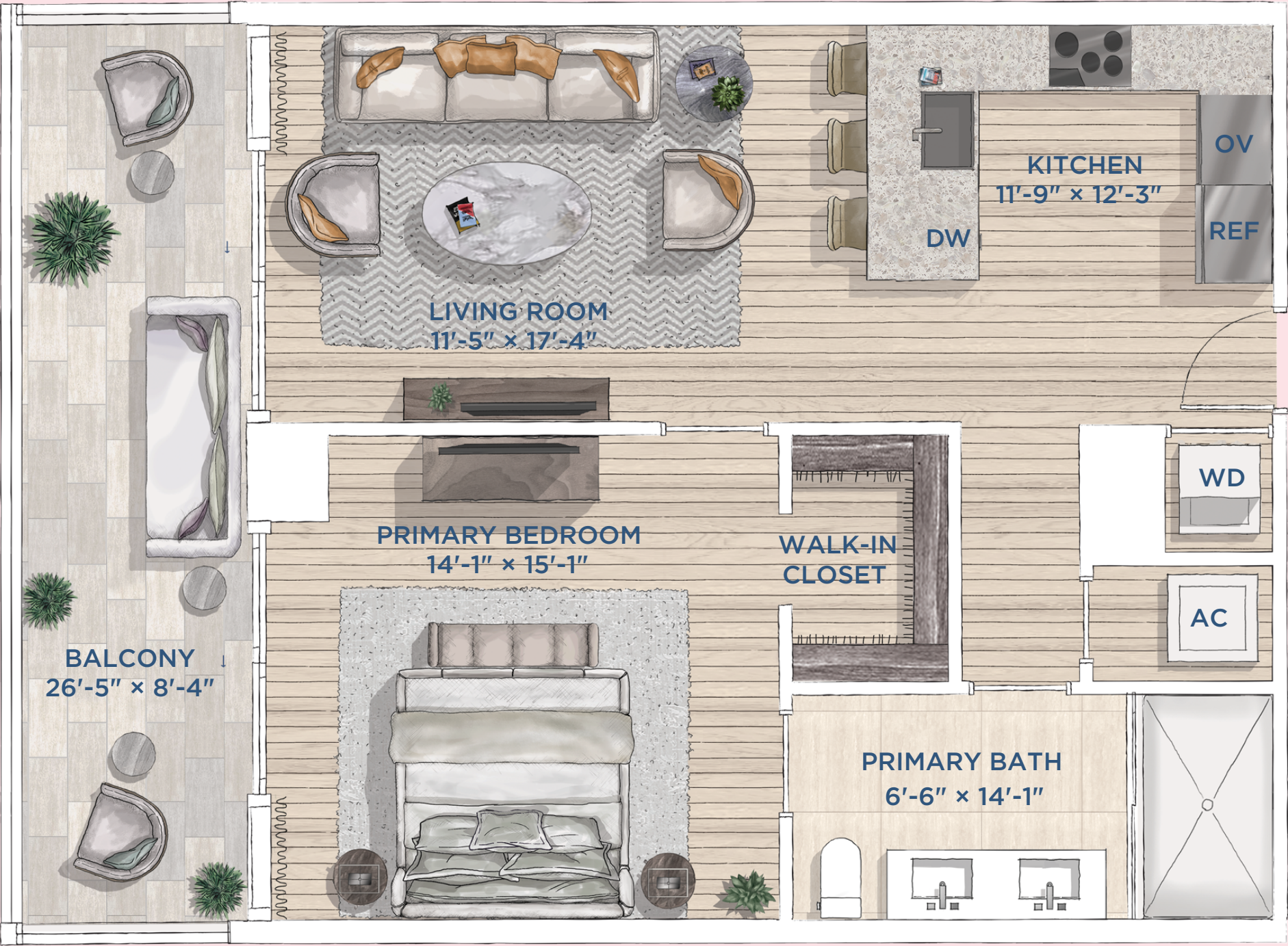
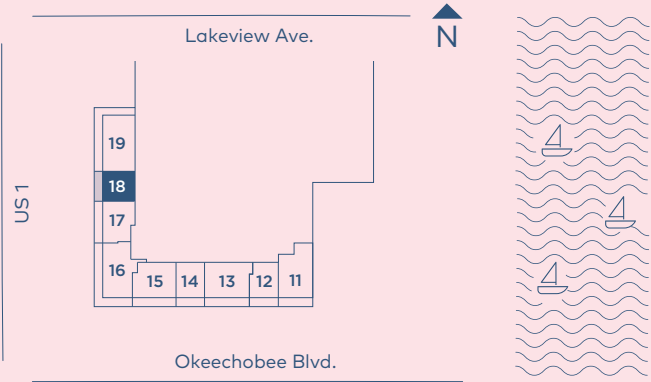


Stated square footages and dimensions are measured to the exterior boundaries of the exterior walls and the centerline of interior demising walls and in fact vary from the square footage and dimensions that would be determined by using the description and definition of the "Unit" set forth in the Declaration (which generally only includes the interior airspace between the perimeter walls and excludes all interior structural components and other common elements). This method is generally used in sales materials and is provided to allow a prospective buyer to compare the Units with units in other condominium projects that utilize the same method. Measurements of rooms set forth on this floor plan are generally taken at the farthest points of each given room (as if the room were a perfect rectangle), without regard for any cutouts or variations. Accordingly, the area of the actual room will typically be smaller than the product obtained by multiplying the stated length and width. All dimensions are estimates which will vary with actual construction, and all floor plans, specifications and other development plans are subject to change and will not necessarily accurately reflect the final plans and specifications for the development.

RESIDENCE
18
LEVEL 2-7

1 Bedroom
1 Bathroom

INTERIOR: 824 SQ. FT. 77 SQ. M.
BALCONY: 242 SQ. FT. 22 SQ. M.
TOTAL: 1066 SQ. FT. 99 SQ. M.



Exclusive Sales and Marketing by Douglas Elliman Development Marketing

Stated square footages and dimensions are measured to the exterior boundaries of the exterior walls and the centerline of interior demising walls and in fact vary from the square footage and dimensions that would be determined by using the description and definition of the "Unit" set forth in the Declaration (which generally only includes the interior airspace between the perimeter walls and excludes all interior structural components and other common elements). This method is generally used in sales materials and is provided to allow a prospective buyer to compare the Units with units in other condominium projects that utilize the same method. Measurements of rooms set forth on this floor plan are generally taken at the farthest points of each given room (as if the room were a perfect rectangle), without regard for any cutouts or variations. Accordingly, the area of the actual room will typically be smaller than the product obtained by multiplying the stated length and width. All dimensions are estimates which will vary with actual construction, and all floor plans, specifications and other development plans are subject to change and will not necessarily accurately reflect the final plans and specifications for the development. 🏠

RESIDENCE

19

LEVEL 2-7

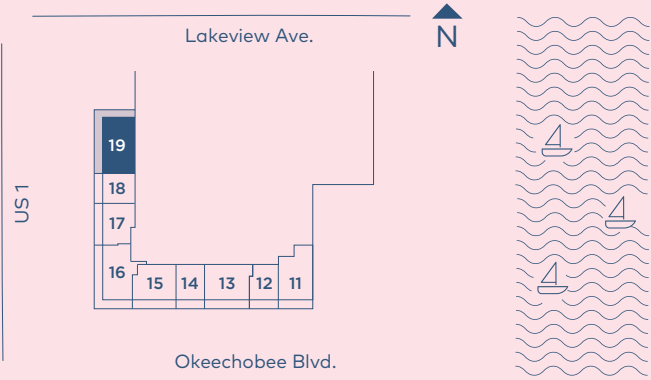
2 Bedrooms

2.5 Bathrooms

INTERIOR: 1528 SQ. FT. 142 SQ. M.

BALCONY: 669 SQ. FT. 62 SQ. M.

TOTAL: 2197 SQ. FT. 204 SQ. M.



RESIDENCE

211

LEVEL 2

1 Bedroom

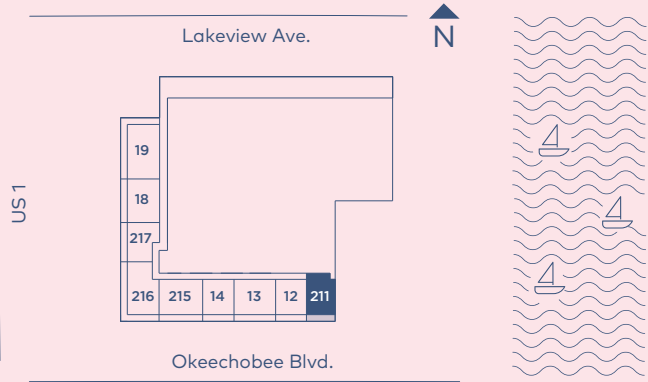
1.5 Bathrooms

Den

INTERIOR: 1088 SQ. FT. 101 SQ. M.

BALCONY: 287 SQ. FT. 27 SQ. M.

TOTAL : 1375 SQ. FT. 128 SQ. M.



Exclusive Sales and Marketing by Douglas Elliman Development Marketing

Stated square footages and dimensions are measured to the exterior boundaries of the exterior walls and the centerline of interior demising walls and in fact vary from the square footage and dimensions that would be determined by using the description and definition of the "Unit" set forth in the Declaration (which generally only includes the interior airspace between the perimeter walls and excludes all interior structural components and other common elements). This method is generally used in sales materials and is provided to allow a prospective buyer to compare the Units with units in other condominium projects that utilize the same method. Measurements of rooms set forth on this floor plan are generally taken at the farthest points of each given room (as if the room were a perfect rectangle), without regard for any cutouts or variations. Accordingly, the area of the actual room will typically be smaller than the product obtained by multiplying the stated length and width. All dimensions are estimates which will vary with actual construction, and all floor plans, specifications and other development plans are subject to change and will not necessarily accurately reflect the final plans and specifications for the development. 🏠

RESIDENCE

215

LEVEL 2

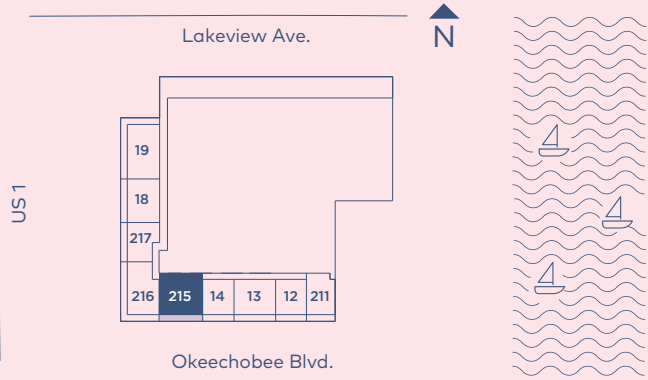
2 Bedroom

2.5 Bathrooms

INTERIOR: 1174 SQ. FT. 109 SQ. M.

BALCONY: 234 SQ. FT. 22 SQ. M.

TOTAL : 1408 SQ. FT. 131 SQ. M.



Exclusive Sales and Marketing by Douglas Elliman Development Marketing

Stated square footages and dimensions are measured to the exterior boundaries of the exterior walls and the centerline of interior demising walls and in fact vary from the square footage and dimensions that would be determined by using the description and definition of the "Unit" set forth in the Declaration (which generally only includes the interior airspace between the perimeter walls and excludes all interior structural components and other common elements). This method is generally used in sales materials and is provided to allow a prospective buyer to compare the Units with units in other condominium projects that utilize the same method. Measurements of rooms set forth on this floor plan are generally taken at the farthest points of each given room (as if the room were a perfect rectangle), without regard for any cutouts or variations. Accordingly, the area of the actual room will typically be smaller than the product obtained by multiplying the stated length and width. All dimensions are estimates which will vary with actual construction, and all floor plans, specifications and other development plans are subject to change and will not necessarily accurately reflect the final plans and specifications for the development.

RESIDENCE

216

LEVEL 2

2 Bedroom
2 Bathrooms

INTERIOR: 1247 SQ. FT. 116 SQ. M.
BALCONY: 483 SQ. FT. 45 SQ. M.
TOTAL : 1730 SQ. FT. 161 SQ. M.

