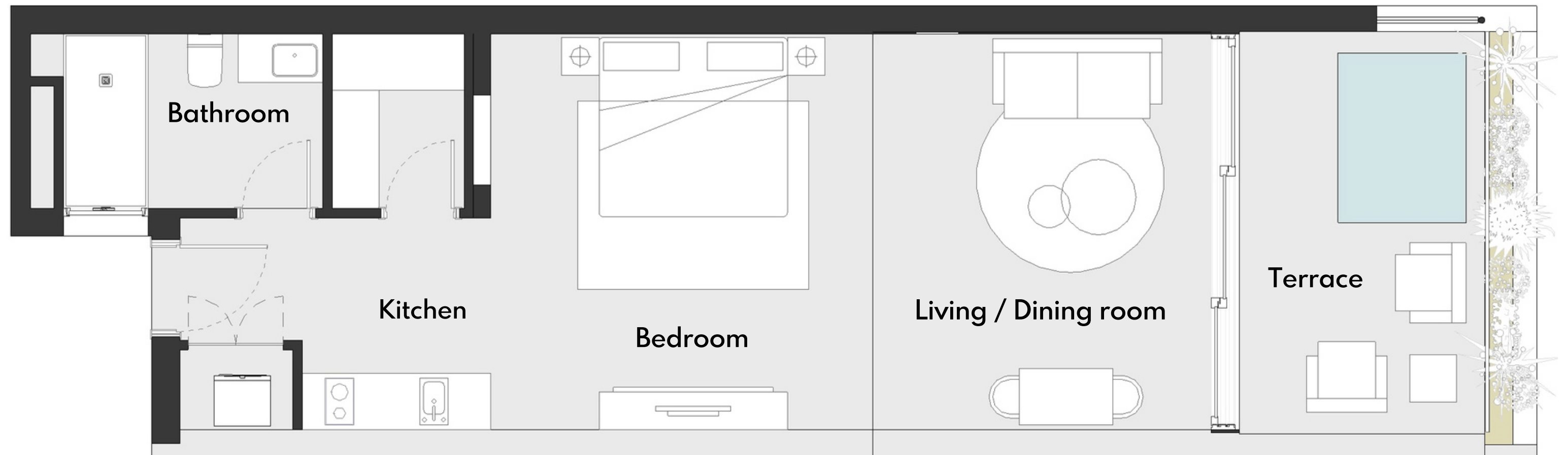




*These images are shown for reference purposes and are subject to change.



750 sqf / 70 m2

Jacuzzi included

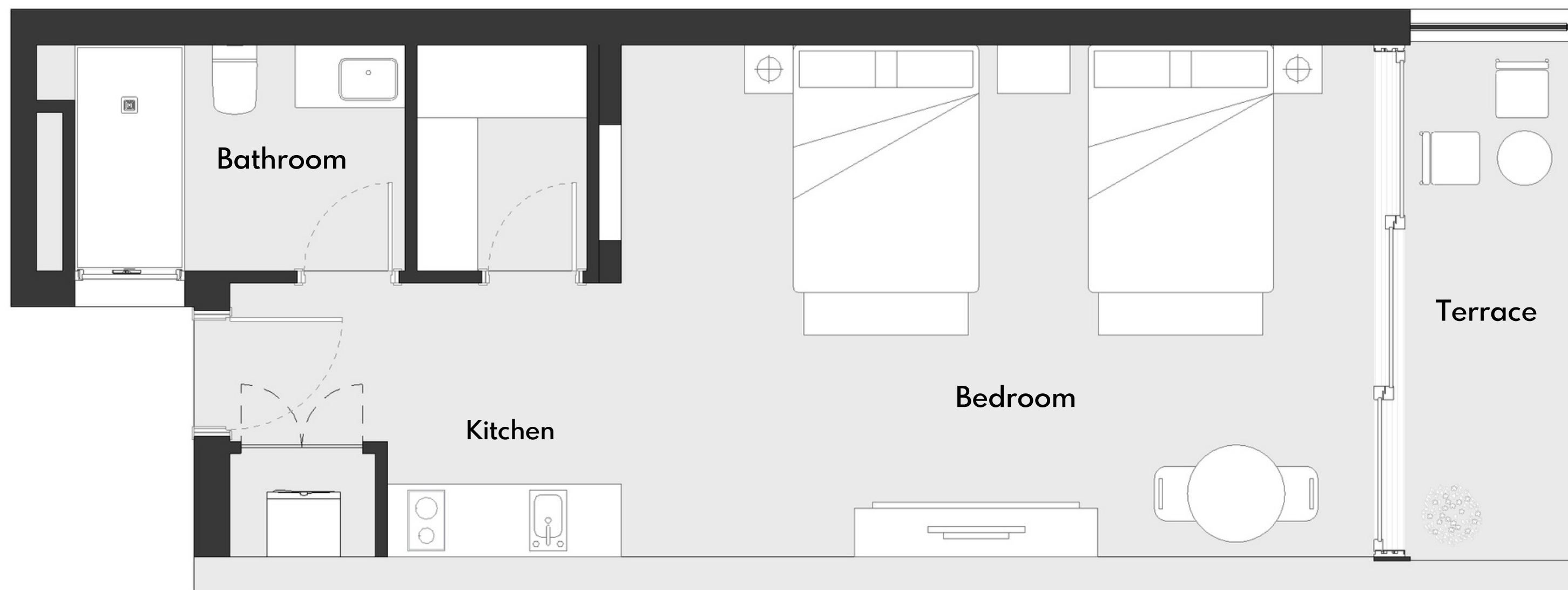
The developer reserves the right to make any changes to the project during the construction process that are deemed essential and more efficient for technical, legal, or commercial reasons, or by order of any administrative body or public authority. All documentation is for informational purposes only and does not constitute a contractual agreement. Renderings of façades, common areas, and other spaces are indicative and may be subject to modifications in the technical projects. The furniture shown in the renderings is purely illustrative and should not be considered part of the sales contract. The features of the properties will be as detailed in the corresponding quality report attached to the sales contract. Finishes, materials, colors, equipment, sanitary fixtures, kitchen furniture, and door openings may differ from the final specifications, as they are an illustrative approximation.



25

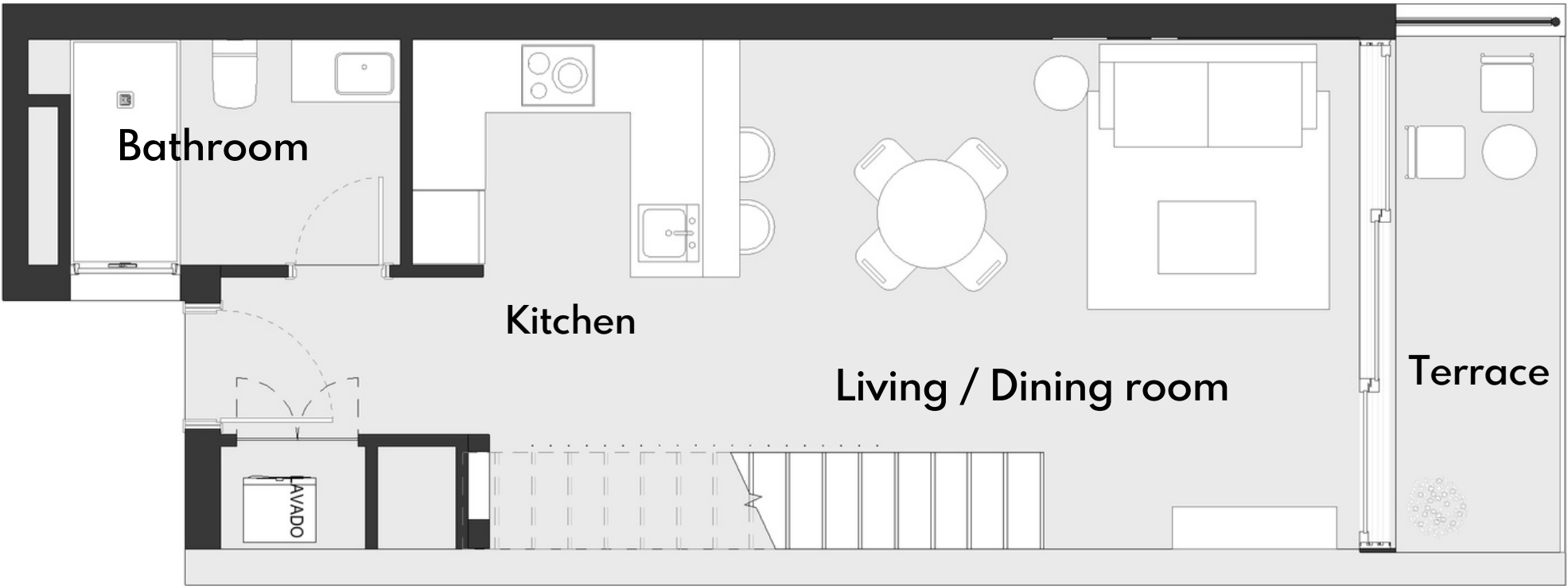
700 sqf / 65 m2

The developer reserves the right to make any changes to the project during the construction process that are deemed essential and more efficient for technical, legal, or commercial reasons, or by order of any administrative body or public authority. All documentation is for informational purposes only and does not constitute a contractual agreement. Renderings of façades, common areas, and other spaces are indicative and may be subject to modifications in the technical projects. The furniture shown in the renderings is purely illustrative and should not be considered part of the sales contract. The features of the properties will be as detailed in the corresponding quality report attached to the sales contract. Finishes, materials, colors, equipment, sanitary fixtures, kitchen furniture, and door openings may differ from the final specifications, as they are an illustrative approximation.

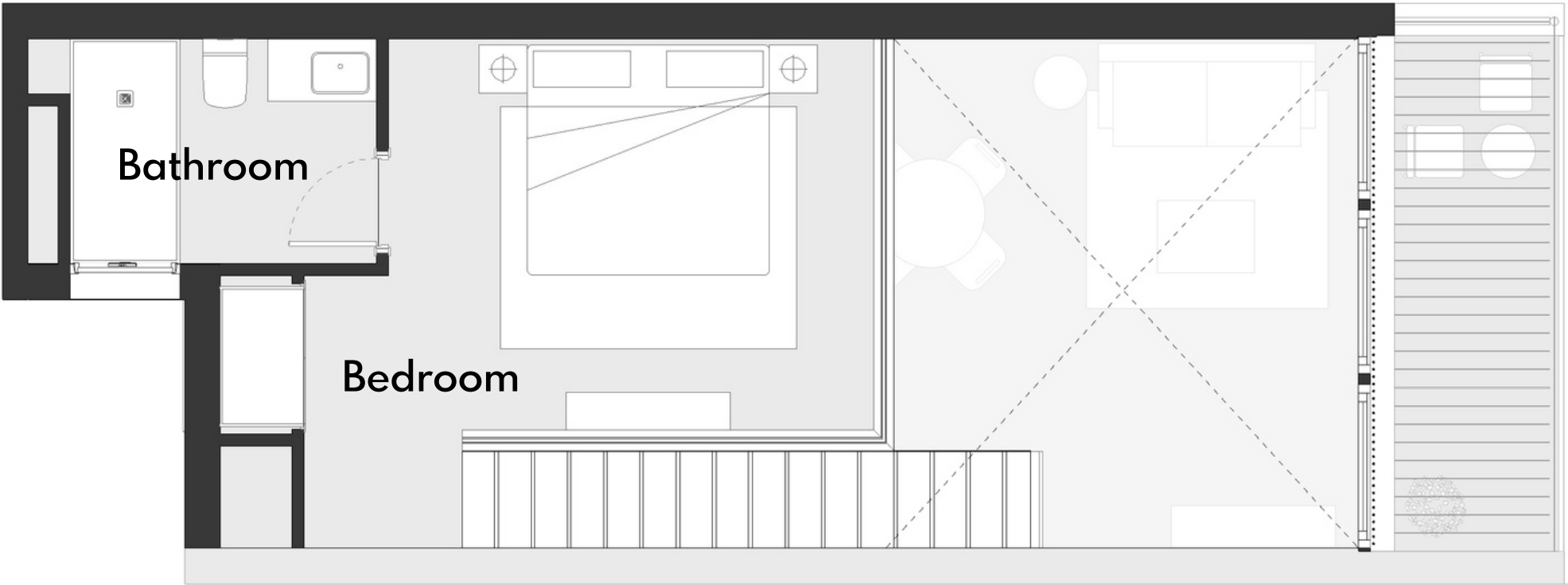


600 sqf / 56 m2

The developer reserves the right to make any changes to the project during the construction process that are deemed essential and more efficient for technical, legal, or commercial reasons, or by order of any administrative body or public authority. All documentation is for informational purposes only and does not constitute a contractual agreement. Renderings of façades, common areas, and other spaces are indicative and may be subject to modifications in the technical projects. The furniture shown in the renderings is purely illustrative and should not be considered part of the sales contract. The features of the properties will be as detailed in the corresponding quality report attached to the sales contract. Finishes, materials, colors, equipment, sanitary fixtures, kitchen furniture, and door openings may differ from the final specifications, as they are an illustrative approximation.



FIRST FLOOR



SECOND FLOOR

970 sqf / 90 m2

The developer reserves the right to make any changes to the project during the construction process that are deemed essential and more efficient for technical, legal, or commercial reasons, or by order of any administrative body or public authority. All documentation is for informational purposes only and does not constitute a contractual agreement. Renderings of façades, common areas, and other spaces are indicative and may be subject to modifications in the technical projects. The furniture shown in the renderings is purely illustrative and should not be considered part of the sales contract. The features of the properties will be as detailed in the corresponding quality report attached to the sales contract. Finishes, materials, colors, equipment, sanitary fixtures, kitchen furniture, and door openings may differ from the final specifications, as they are an illustrative approximation.



*These images are shown for reference purposes and are subject to change.



These images are shown for reference purposes and are subject to change.



These images are shown for reference purposes and are subject to change.



*These images are shown for reference purposes and are subject to change.



*These images are shown for reference purposes and are subject to change.