

10/27 Western Harbour Terrace
Edinburgh, EH6 6JN

Stunning Waterfront Apartment on Western Harbour Terrace

Overview

Discover luxury living in this beautifully appointed waterfront three-bedroom apartment located in the prestigious Wester Harbour Terrace. With breathtaking panoramic views over the Forth, this property offers an exceptional lifestyle opportunity.

Key Features

- **Spacious Open-Plan Living:** Enjoy the light-filled open-plan living and dining area, perfect for entertaining guests or relaxing while taking in the stunning views.
- **Modern Kitchen:** The sleek, fully-equipped kitchen features high-end appliances and ample storage.
- **Bedrooms:** The apartment boasts three generously sized bedrooms with their own en-suite and built-in wardrobes.
- **Bathrooms:** Four luxurious bathrooms, including a modern family bathroom with high-quality fittings.
- **Balcony:** Private balcony offering the perfect spot for morning coffee or evening drinks while enjoying the serene waterfront views.

Additional Features

- **Secure Parking:** The property includes secure underground parking for two vehicles, providing convenience and peace of mind.
- **Central Heating:** Efficient central heating throughout the property ensures comfort during the colder months.
- **Double Glazing:** High-quality double-glazed windows for energy efficiency and noise reduction.
- **Storage:** Plenty of storage space, including built-in wardrobes and additional storage solutions throughout the home.



Viewing

Please contact Keller Williams Caledonia on graeme.nimmo@kwuk.com for viewing arrangements

Part Exchange Available.

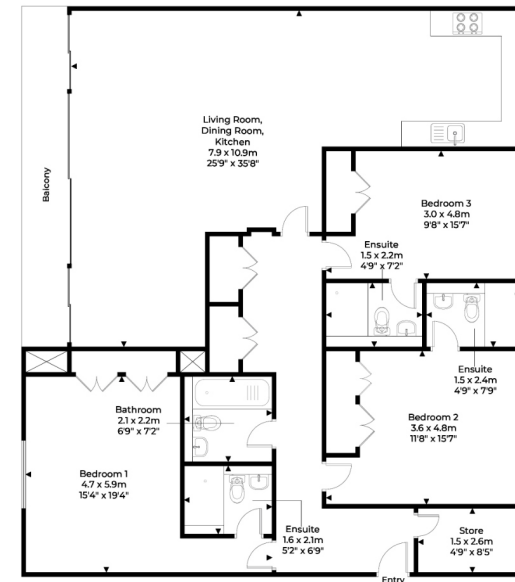
Location

Situated in the vibrant Newhaven area, this apartment is close to a range of amenities, including cafes, restaurants, and shops. Excellent transport links provide easy access to the city centre, making it ideal for professionals and families alike.

- **Ocean Terminal:** A nearby shopping centre offering a variety of high street shops, a multiscreen cinema, and a selection of eateries.
- **Newhaven Harbour:** Home to a selection of popular waterside restaurants.
- **Supermarkets:** An Asda supermarket is conveniently located in Newhaven itself.
- **Leith and The Shore:** Just approximately one mile away, featuring fashionable bars and restaurants.
- **Fitness Facilities:** David Lloyd Gym is a short walk away.
- **Transport Links:** Regular bus and tram services operate in the area, providing links into and around the city centre. Motorists can easily access the city bypass via the A902 (Ferry Road).

Don't miss this rare opportunity to own a piece of waterfront luxury at Wester Harbour Terrace. Schedule your viewing today! This property is offered to the market chain free.

10/27 Wester Harbour Terrace EH6 6JN
Approximate Gross Area
163 sq m / 1755 sq ft



Disclaimer : This diagram is for illustrative purpose only. All reasonable care has been taken in the preparation, but no warranty is given as to the accuracy of the information. This document does not constitute any part of any offer or contract. Dimensions shown are approximate only. Prospective parties should rely on their own enquiries.



DISCLAIMER

These particulars are intended to give a fair description of the property, but their accuracy cannot be guaranteed, and they do not constitute or form part of an offer of contract. Intending purchasers must rely on their own inspection of the property. None of the above appliances/services have been tested by ourselves. We recommend purchasers arrange for a qualified person to check all appliances/services before legal commitment. Whilst every attempt has been made to ensure the accuracy of the floorplan contained here, measurements of doors, windows, rooms, and any other items are approximate, and no responsibility is taken for any error, omission, or misstatement. This plan is for illustrative purposes only and should be used as such by any prospective purchaser. Washing Machine is integrated