



A-ONE
GOLD & DIAMONDS
HOUSTON

VOLUME 1

10K Classic Charms, bands & Chains

Remember the golden rule:
He who has the gold makes the rules
— Johnny Hart

Why open an account with us?

- **Fancy, trendy & large collection of gold jewelry every day:**
Offer more to your customers so you can close more deals
- **No minimum order requirement:**
After your first order, you're free to purchase at your own pace — whether it's one piece or bulk orders.
- **Aggressive Pricing:**
Get lowest pricing in the market with amazing terms
- **Hassle free shipping:**
Next day delivery for urgent orders or 2nd day delivery for regular orders
- **Drop Shipping service:**
Buy from us & we ship wherever you want
- **Custom Orders:**
Our manufacturers & inhouse designer take custom orders and deliver it in 1 or 2 weeks time
- **Doorbuster deals:**
Enroll with us for weekly / monthly deals.
- **Amazing customer service:**
Get a dedicated A-ONE salesperson who speaks Spanish, English, or Hindi — They'll know your style and are just a call away.
- **Family operated business:**
Owner is just a call or visit away (Available in business hours).

Scan here or use the link to open an account



start.aonegnd.com

1. Submit the account application online.
2. Meet our sales person on video call.
3. Place the order.
4. Get Next Day delivery!

Need time to pay?

- Give trade / credit references on the account application form for credit evaluation and get terms up to 60 days.
- For more than 60 days terms, contact us for credit application.

For more information, call us at 713-999-7868 or email at marketing@aonegnd.com

Connect with A-One Team



Wajid Ali -Founder

(Deal Maker)

Phone: 832-812-7969

Sales Team (Call or WhatsApp)



Mike (Mehboob)

(Industry Veteran)

Phone: 346-901-6601



Shay (Shahista)

(Customer Magnet)

English / Espanol

Phone: 346-467-3461



Ann (Navin)

(Marketing Strategist)

Phone: 346-521-8053



AK (Amul)

(Business Builder)

Phone: 346-375-8117



SP (Shazz)

(Roaming Rainmaker)

Phone: 832-322-5664



AZ (Ayaz)

(Merchandising Magician)

Phone: 346-467-3443



RB (Rashid)

(Desi Sales Sorcerer)

Phone: 346-467-3446



AB (Ahmed)

(Custom's Guy)

Phone: 346-467-3454

Want to visit us?

A-One Gold & Diamonds, 7500 Bellaire Blvd, Suite 400, 4th Floor, Houston, Tx 77036

Business Hours: Monday to Friday (10:00 am to 6:30 pm)



10K SOLID MIAMI CUBAN

Chains & Bracelets

Length	7"	7.5"	8"	8.5"	9"	16"	18"	20"	22"	24"	26"
	gm	gm	gm	gm	gm	gm	gm	gm	gm	gm	gm
2.5mm	2.6	2.8	3.0	3.2	3.4	6.0	6.7	7.5	8.3	9.0	9.8
3mm	4.4	4.8	5.1	5.4	5.7	10.8	12.1	12.7	14.1	15.2	16.5
4mm	8.1	9.1	9.3	9.9	10.5	18.6	21.0	23.4	25.1	27.2	30.3
5mm	13.5	13.6	14.5	15.4	16.3	28.9	32.2	36.7	39.1	42.8	47
6mm	15.9	17.0	18.5	19.3	20.5	36.4	40.9	48.5	52.5	54.5	59.1
7mm	-	-	28.3	30.7	32.5	55.5	62.4	69.3	76.3	83.2	88.6
8mm	-	-	37.3	39.1	41.4	78.8	88.7	98.5	108.4	111.9	121.7
9mm	-	-	47.9	50.9	53.4	90.6	101.9	113.3	124.6	135.6	154.8

*approximate weights



10K HOLLOW MIAMI CUBAN

Chains & Bracelets

Length	7"	8"	8.5"	9"	16"	18"	20"	22"	24"	26"	28"
	gm	gm	gm	gm	gm	gm	gm	gm	gm	gm	gm
4mm	2.8	3.1	3.2	3.3	5.8	6.5	7	7.5	8.4	9.1	9.8
4.5mm	4	5.7	5.9	6.3	8.2	9.8	10.9	11.9	13	14.1	15.2
5.5mm	5.3	6.0	6.4	6.8	12	13.5	15	16	17.3	18.9	20.4
6mm	6.3	7.2	7.7	8.1	14.5	16.3	18.1	19.6	21.7	23.1	25.3
7mm	8.3	10.9	11.3	10.7	19.1	21.4	23.8	26.2	27.8	30	33.3
7.5mm	10.5	13.8	14.7	15.2	24	27	30	33	35	36.4	42
8.5mm	13.6	15.5	18.7	19.7	31	34.9	38.8	42.6	46.5	52.4	54.3
9mm	16.4	18.8	19.9	21.1	37.5	42.2	46.9	51.6	56	59.8	65.7
10.5mm	16.8	19.2	23.5	25.3	38.4	43.2	48	52.8	57.6	64.5	67.2
11mm	20.9	23.9	25.4	28.4	47.7	53.7	59.7	65.6	71.6	77.8	82

*approximate weights



10K SOLID ROPE

Chains & Bracelets

Bracelets available in
all sizes & mm

Length	16"	18"	20"	22"	24"	26"	28"	30"
	gm	gm	gm	gm	gm	gm	gm	gm
1.5mm	3.1	3.4	3.7	4.1	4.5	4.8	5.2	5.6
2mm	5.4	6.1	6.6	7.1	7.9	8.5	9.2	9.9
2.5mm	6.9	7.7	8.7	9.4	10.2	11.1	11.9	13.1
3mm	10.4	11.8	13.2	14.4	15.9	17.2	18.5	19.8
4mm	18.4	20.7	22.7	25.7	27.9	30.7	32.2	34.5
5mm	25.9	29.2	33.2	36.4	39.6	42.8	46.2	48.7
6mm	-	41.1	45.9	50.7	55.4	59.6	64.5	68.5
7mm	-	-	76.5	84.2	91.6	99.3	106.9	114.6
8mm	-	-	-	105.2	114.7	124.4	134.9	144.3

*approximate weights



Bracelets available in
all sizes & mm

10K HOLLOW ROPE

Chains & Bracelets

Length	16"	18"	20"	22"	24"	26"	28"
	gm	gm	gm	gm	gm	gm	gm
1.5mm	1.1	1.2	1.3	1.4	-	-	-
2mm	2.3	2.7	2.9	3	3.3	3.5	3.8
2.5mm	2.6	2.8	3.2	3.4	3.8	4.0	4.3
3mm	4.0	4.8	5.2	5.8	5.6	6.6	7.1
4mm	5.4	6.3	6.7	7.1	8.2	8.9	9.6
5mm	6.4	7.2	8	8.6	9.3	10.3	11.0
6mm	8.6	9.6	10.7	11.5	12.2	13.4	14.4
7mm	13.0	14.6	16.2	17.7	19.2	21.5	22.3
8mm	-	-	21.8	24	26.2	27.2	30.0
9mm	-	-	25.2	27.7	30.2	32.4	35.2
10mm	-	-	-	-	35.5	37.0	40.3

*approximate weights



10K SHINNY VALENTINO

Chains & Bracelets

Length	7"	7.5"	8"	16"	18"	20"	22"	24"	26"
	gm	gm	gm	gm	gm	gm	gm	gm	gm
1.5mm	0.8	0.9	1.0	2.1	2.3	2.6	2.8	3.1	3.4
2mm	0.9	1.0	1.1	2.0	2.3	2.5	2.7	2.9	3.2
2.5mm	1.2	1.3	1.4	2.8	3.2	3.5	3.9	4.2	4.6
3mm	1.4	1.5	1.6	3.1	3.9	4.0	4.5	4.8	5.2
3.5mm	2.1	2.3	2.4	4.9	5.5	6.1	6.5	7.2	7.8
4mm	3.5	3.8	4.0	8.0	9.4	10.3	11.2	12.0	13
5mm	5.2	5.6	6.0	11.9	12.8	14.1	15.5	17.9	19.4
6mm	6.3	6.7	7.2	14.3	16.1	17.9	19.7	21.5	23
6.5mm	7.6	8.2	8.7	17.4	19.6	21.7	23.4	25.2	28.3

*approximate weights



10K SHINNY SUPER LIGHT ROPE Chains & Bracelets

Bracelets available in
all sizes & mm

Length	7"	8"	10"	16"	18"	20"	22"	24"	26"
	gm	gm	gm	gm	gm	gm	gm	gm	gm
1.9mm	0.6	0.7	0.8	1.4	1.6	1.7	1.8	1.9	2.2
2.3mm	0.8	0.9	1.1	1.8	2.1	2.3	2.5	2.6	2.7
2.5mm	1.6	1.8	2.1	2.9	3.1	3.6	3.9	4.2	4.7
2.9mm	1.7	1.9	2.2	3.2	3.5	3.8	4.1	4.4	5.2
3.2mm	2.0	2.2	2.7	3.9	4.3	5.0	5.2	5.6	6.0
3.8mm	2.4	2.7	3.0	4.8	5.5	5.9	6.5	7.1	7.7
4.5mm	3.4	3.8	4.4	6.4	7.3	8.4	9.0	10.1	11.0
6.5mm	6.0	7.3	8.9	13.7	15.4	17.2	18.7	20.66	22.2
8mm	9.1	10.1	13.5	20.8	23.4	26.0	28.8	33.7	35.0
9mm	11.4	13.1	16.0	26.2	29.5	32.8	36.0	39.4	43.6
10mm	13.5	14.6	18.3	31.0	34.9	38.8	42.6	46.7	48.9
12.5mm	21.5	26.5	32.0	49.3	55.5	61.7	67.8	74.0	80.1

10k super shinny semi solid rope also available.

*approximate weights

Guide to order classic Chains



10K SOLID CURB

Chains & Bracelets

Length	7"	8"	8.5"	9"	16"	18"	20"	22"	24"	26"	28"
	gm	gm	gm	gm	gm	gm	gm	gm	gm	gm	gm
2mm	1.4	1.6	1.7	1.8	3.2	3.6	4.0	4.4	4.8	5.2	5.6
3mm	1.6	1.9	2.0	2.1	3.7	4.2	4.7	5.1	5.6	6.1	6.5
4mm	2.3	2.6	2.7	2.9	5.2	5.8	6.5	7.1	7.8	8.4	9.0
5mm	3.4	3.9	4.1	4.4	7.8	8.7	9.7	10.7	11.6	12.6	13.6
5.5mm	5.3	6.0	6.4	6.8	12.1	13.6	15.1	16.6	18.1	19.6	21.1
6mm	5.1	5.8	6.2	6.5	11.6	13.1	14.5	16.0	17.4	18.9	20.4
7mm	7.3	8.3	8.8	9.3	16.6	18.7	20.8	22.8	24.9	27	29.1
8mm	-	10.9	11.6	12.3	21.8	24.6	27.3	30.0	32.7	35.47	38.2
10mm	-	14.5	15.4	16.3	29.0	32.6	36.2	39.9	43.5	47.1	50.7
12mm	-	22.0	23.3	24.7	43.9	49.4	54.9	60.4	65.9	71.38	76.9

10k two tone (yellow /white) curb links also available. *approximate weights



10K HOLLOW FLAT CURB

Chains & Bracelets

Length	7"	8"	9"	18"	20"	22"	24"	26"
	gm	gm	gm	gm	gm	gm	gm	gm
2mm	-	-	-	1.6	1.7	1.9	2	-
2.5mm	-	-	-	2.3	2.5	2.7	2.9	3.1
4mm	1.8	2.1	2.3	4.62	4.9	5.1	5.5	6.7
4.5mm	3	3.2	3.4	6.7	7.2	8.1	8.4	9.7
5mm	3.7	4.1	4.2	8.3	9.4	10.5	11	12.0
6.5mm	4.9	6.2	6.3	12.7	14.1	16.4	17.4	18.7
8mm	7.7	9.1	9.9	19.7	21.9	34.0	26.5	28.5
9.5mm	10.9	13.7	14.0	28.0	31.1	34.2	38.2	42.9
10.5mm	15.1	17.3	19.5	38.9	43.3	47.6	51.9	55.9

10k two tone (yellow /white) curb links also available.

*approximate weights



10K ROYAL MIAMI CUBAN

Chains & Bracelets

Length	7"	8"	8.5"	9"	16"	18"	20"	22"	24"	26"	28"
	gm	gm	gm	gm	gm	gm	gm	gm	gm	gm	gm
8mm	14	15.5	15.9	16.9	30.0	33.5	38.7	39.4	43.1	47.6	52.5
10mm	15.8	17.7	18.8	19.7	35.3	38.1	44.9	49.1	53.0	58.8	61.8
12mm	18.1	20.7	23.2	23.3	41.4	46.5	51.7	54.5	63.5	67.9	72.4
14mm	21.3	24.4	28.2	30.2	48.7	54.8	60.9	67.0	73.1	81.5	85.3
16mm	25.1	28.7	30.5	32.9	57.4	64.5	71.7	78.9	86.0	93.2	102.9
18mm	27.5	31.5	33.4	36.5	63.0	70.8	78.7	86.6	94.4	102.3	111.6
20mm	34.7	39.7	42.2	44.5	79.4	89.3	99.2	109.2	119.1	129.0	136.3

*approximate weights



10K CROWN HOLLOW

Chains & Bracelets

Length	8"	8.5"	9"	16"	18"	20"	22"	24"	26"	28"
	gm	gm	gm	gm	gm	gm	gm	gm	gm	gm
4mm	4.1	4.3	4.6	8.8	9.4	10.4	11.5	12.2	13.2	14.2
5mm	9.2	10.2	11.2	17.4	18.7	20.7	21.9	24	27.1	29.2
7mm	11	11.7	12.4	18.4	20.7	23.0	25	26.3	29.2	31.4
9mm	12.6	13.4	14	25.2	28.4	29.4	31.9	34.2	36.1	38.9
11mm	14.8	15.8	16.7	28.5	32.1	35.7	39.2	42.8	47.1	49.9
13mm	18.0	19.2	20.3	32.6	36.7	40.7	44.8	49.4	50.5	57.6
15mm	22.0	23.4	24.8	41.0	46.1	51.3	56.4	61.5	67.5	71.8
17mm	24.0	25.5	27.0	48.1	54.1	60.1	66.1	72.1	78.1	84.1
19mm	30.8	32.8	34.7	56.5	63.6	70.6	77.7	84.8	91.8	98.9

10k whole CZ chain, Greek two tone, white d/c, yellow d/c chains also available in the same style.

*approximate weights



10K BOX BYZANTINE

Chains & Bracelets

Length	8"	16"	18"	20"	22"	24"	26"	28"	30"
	gm	gm	gm	gm	gm	gm	gm	gm	gm
2.5mm	3.7	4.8	5.4	5.6	6.4	6.9	7.6	8.2	8.8
3mm	3.4	6.8	7.7	8.6	9.6	10.3	11.0	11.8	12.7
4mm	5.7	10.5	12.0	13	14.5	15.9	17	18.3	19.6
5mm	7.8	14.7	16.6	18.4	19.2	21.9	22.6	25.3	27.6
6.5mm	8.5	15.9	17.9	19.9	21.8	23.6	26	27.8	29.8

*approximate weights

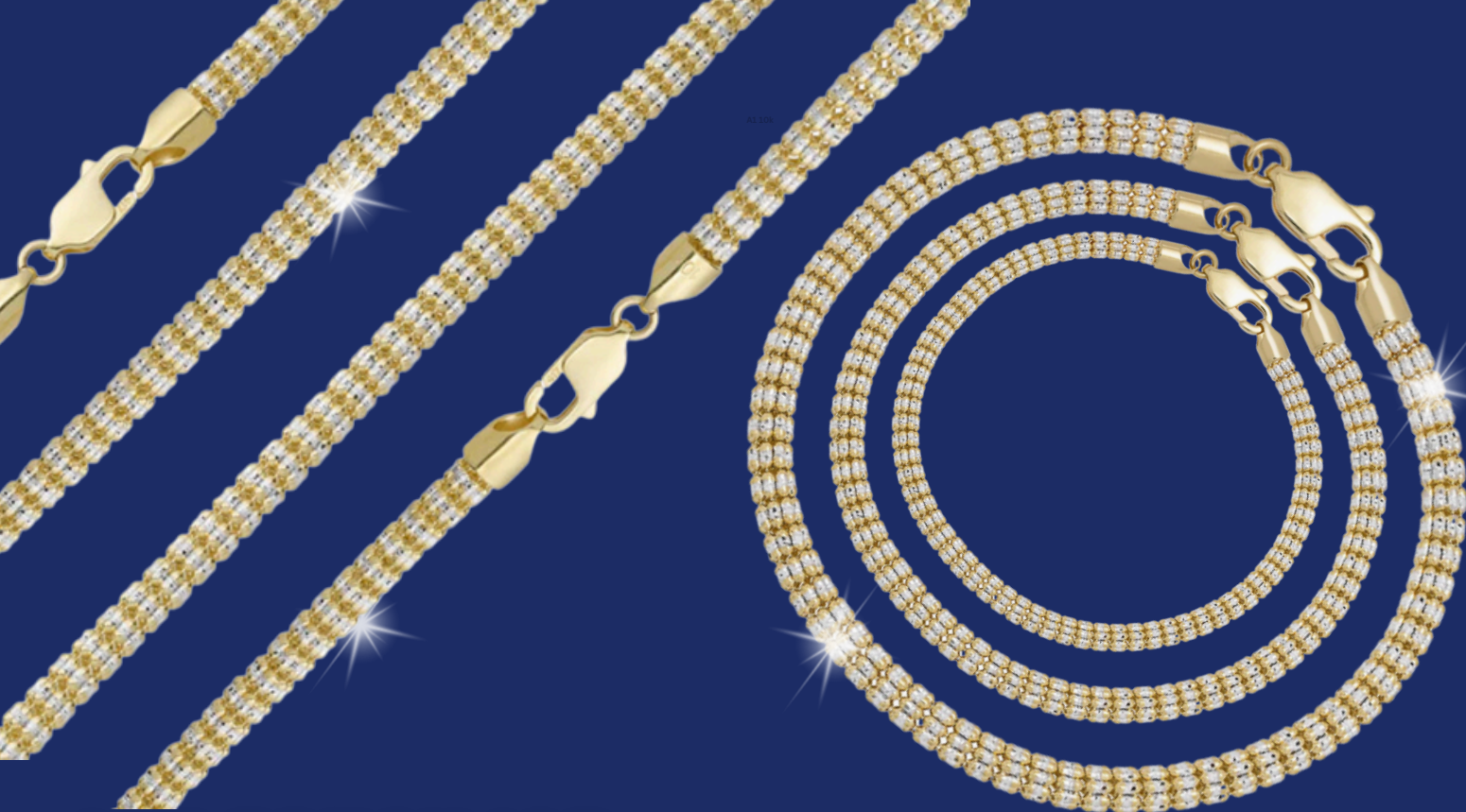


10K HOLLOW FRANCO

Chains & Bracelets

Length	7"	8"	8.5"	9"	16"	18"	20"	22"	24"	26"	28"
	gm	gm	gm	gm	gm	gm	gm	gm	gm	gm	gm
1.5mm	0.7	0.9	0.9	1.0	1.7	1.9	2.1	-	-	-	-
1.8mm	1.2	1.4	1.5	1.6	2.8	3.1	3.4	4.9	5.3	5.8	6.2
2 mm	2.1	2.4	2.6	2.7	4.8	5.4	6.1	6.5	7	7.7	8.2
2.5 mm	2.3	2.7	2.8	3.0	5.3	5.7	6.5	7.2	7.7	8.1	8.9
3 mm	3.1	3.5	3.7	3.9	7.0	8.0	8.9	9.7	10	11	11.8
3.5mm	5.4	6.4	6.7	6.9	11.6	11.8	14.3	15.0	16.5	18.2	19.3
4mm	6.4	7.3	7.8	8.1	14.4	16.2	18	19.8	21.3	23.2	25.2
4.5mm	-	9	9.6	10.1	15.8	17.8	19.8	22.1	23.3	25.5	27.2
5.5mm	-	13.8	14.7	15.3	22.2	24.9	27.7	30.3	35.6	38.7	41.7
7mm	-	21.9	23.3	24.4	41.1	46.2	51.3	56.5	61.6	65.9	70

*approximate weights



10K FANCY ICE

Chains & Bracelets

Length	8"	8.5"	16"	18"	20"	22"	24"	26"
	gm	gm	gm	gm	gm	gm	gm	gm
2.5mm	2.9	3.1	6.0	6.5	7.3	8.0	8.8	9.5
3mm	4.9	5.2	8.9	11	12	12.3	13.2	14.5
3.5mm	6.5	7.0	12.5	13.8	15.4	16.9	18.7	20.3
4mm	8.4	8.9	14.5	16.7	18.2	19.7	21.7	23.5
4.5mm	10.8	11.0	19.4	21.9	25	28.2	29.3	31.6
5mm	12.9	13.7	24.6	27.7	30.8	33.9	37.0	40.0

*approximate weights



10K HOLLOW CURB PAVE Chains & Bracelets

Length	7"	8"	8.5"	9"	18"	20"	22"	24"	26"	28"
	gm	gm	gm	gm	gm	gm	gm	gm	gm	gm
2.5mm	0.9	1.0	1.1	1.1	2.3	2.5	2.8	3	3.3	3.5
3.5mm	1.5	1.7	1.8	1.9	3.8	4.2	4.6	5.0	5.4	5.9
4mm	2	2.2	2.0	2.1	4.1	4.6	5.2	5.6	6.1	6.5
4.5mm	2.5	2.9	3.0	3.2	6.8	7.2	7.8	8.6	9.3	10.0
5mm	3.1	3.5	3.8	4.0	8.3	9	9.9	10.6	11.5	12.4
5.5mm	4.0	4.3	4.5	4.8	9.6	10.8	11.7	12.8	13.9	14.9
6.5mm	5.1	6.0	6.3	6.6	13.2	14.7	16	17.1	19.1	20.6
7mm	5.4	6.2	6.6	7.0	13.9	15.5	17.5	18.4	20.1	21.6
8mm	7.6	8.7	10.0	9.8	19.6	21.8	24.0	26.7	30.0	30.5
9.5mm	11.2	13.1	13.5	14.1	28.7	31.9	35.0	38.6	41.6	44.6
10.5mm	15.8	18.6	19.1	19.4	40.5	45.0	49.5	54.0	58.9	63

10k two tone (yellow /white) solid curb links also available.

*approximate weights

Guide to order classic Chains



CUSTOM ORDER

MIAMI CUBAN SOLID

Taking custom orders for
10K, 14K & 18k Solid Miami Cuban

ANY LENGTH, ANY WEIGHT, ANY MM
DELIVERY TIME: 2 WEEK

Millimeters	10 KT	14 KT	18 KT
	Weight Per Inch (gms)	Weight Per Inch (gms)	Weight Per Inch (gms)
8	4.30	4.97	5.72
9	6.01	6.75	7.76
10	7.05	7.69	8.84
11	8.62	8.98	10.33
12	10.16	11.17	12.85
13	12.67	13.50	15.53
14	13.63	14.82	17.04
15	14.98	16.72	19.23
16	18.25	19.29	22.18
17	21.50	22.53	25.91
18	23.06	25.17	28.95
19	25.84	28.59	32.88
20	28.70	30.38	34.94

Choose mm & KT and multiply weight per inch by the
length of your desired bracelet / chain.

*approximate weights

CUSTOM ORDER

SLEEK MIAMI CUBAN SOLID

Taking custom orders for
10K & 14K Solid Sleek Miami Cuban

ANY LENGTH, ANY WEIGHT, ANY MM
DELIVERY TIME: 2 WEEKS

Millimeters	10 KT	14 KT
	Weight Per Inch (gms)	Weight Per Inch (gms)
7	2.9	3.2
8	4.7	5.2
9	5.5	6.1
10	6.1	6.8
11	7.8	8.7
12	10.4	11.5
13	11.3	12.6
14	13.8	15.3
15	16.4	18.2

Choose mm & KT and multiply weight per inch by the
length of your desired bracelet / chain.

*approximate weights



CUSTOM ORDER

SOLID CHINO LINK

Customize chino links for any length, any weight & any mm with Plain ID or Greek Styled ID of your customer's choice!

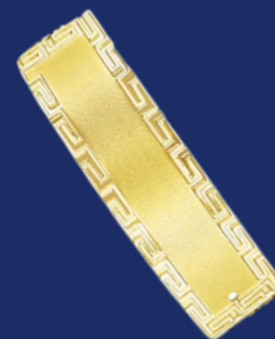
DELIVERY TIME: 2 WEEKS

Millimeters	10 KT		14 KT	
	Weight Per Inch (gms)	(24" Chain Weight)	Weight Per Inch (gms)	(24" Chain Weight)
8	2.9	70.2	3.2	77.2
9	3.8	90.0	4.1	99.0
11	5.5	132.6	6.1	145.9
12	6.8	163.8	7.5	180.2
14	8.9	214.5	9.8	236.0
16	13.5	323.7	14.8	356.1
17	14.3	343.2	15.7	377.5
20	15.6	374.4	17.2	411.8
22	21.0	503.1	23.1	553.4
25	26.5	635.1	29.1	698.6

Plain ID



Greek Styled ID



Choose mm & KT and multiply weight per inch by the length of your desired bracelet / chain.

*approximate weights

10K INITIALS & NUMBERS

Charms & Rings

D/C Block Initials



0.9 gm

1.5 gms

2.1 gms

D/C Block Numbers



0.6 gm

1.7 gms

2.8 gms

D/C Cursive Initials



0.8 gms

1.5 gms

Heart Initials



0.9 gm

1.6 gm

Ring

CZ Initials



1.5 gms

0.8 gms

0.9 gms

1.8 gms

Box Initials



1 gm

1.5 gm

CZ Initial Rings



1.5 gms

1.3 gms

2 gms

10K NUGGET COLLECTION

Men Rings



Solid Nugget Rings

Heavy Men's rings with weights between 8.8g to 24.5g

Light Nugget Rings



Approx - 3 g / 4g

*All sizes available from 5 to 10

10K NUGGET COLLECTION

Ladies Earrings, Rings, Charms

Africa Earrings



1.0 g



1.3 g



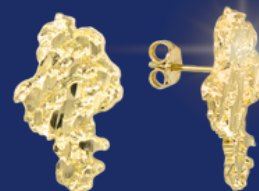
1.6 g



1.8 g



2.9 g



3.7 g

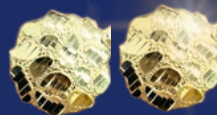
Round Earrings



1.8 g



2.0 g



2.5 g



3.6 g

Heart Earrings



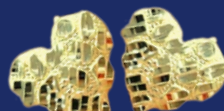
1.3 g



1.5 g



1.8 g



2.5 g



2.9 g

Heart Pendants



0.6 g



0.9 g



1.3 g



1.5 g



1.6 g



2.4 g

Heart Rings

Square Earrings



1 g



1.3 g

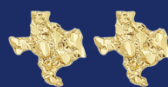


1.9 g



2.5 g

Texas Earrings



1.4 g



1.9 g

Texas Rings



1.9 g



2.4 g



3 g

10K SCREW BACK STUDS

Gold Ball & Solitaire CZ

Gold Ball Studs

6 sizes (mm)

Kid & adult friendly

Screw back
Prevents from falling out

6mm

5mm

4mm

3mm

2mm

1mm

Solitaire CZ Studs

5 sizes (mm)

Kid & adult friendly

6mm

5mm

4mm

3mm

2mm

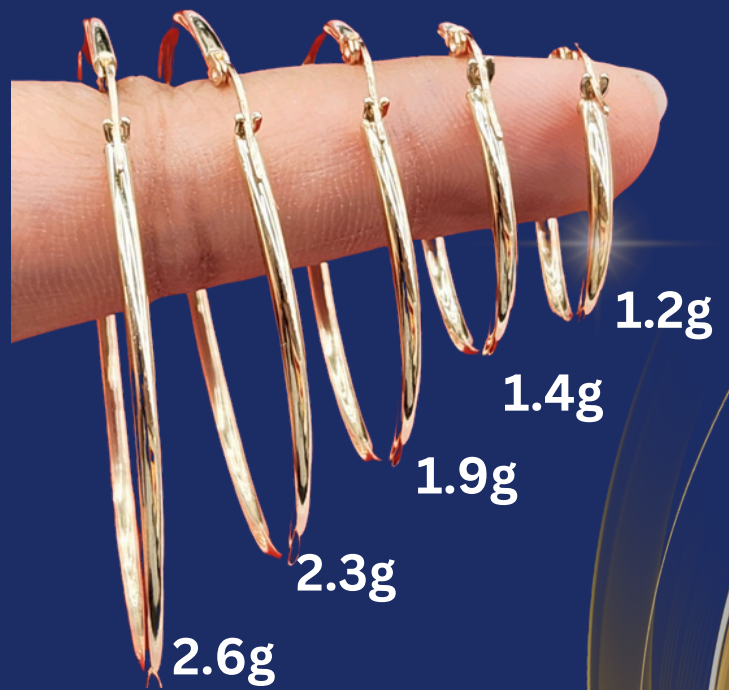
10K PIPE HOOPS

Classic Style

3mm - Plain



2mm - Plain



Laser Cut



Twisted Texture



D/C Styled Hoops also available

*approximate weights

10K CENTENARIO BEZEL



22.1 gm



17.4 gm



15.7 gm



24.4 gm



5.2 gm



15.7 gm



17.6 gm



12.7 gm



11.4 gm



13.6 gm



9.1 gm



15.3 gm



12.4 gm

*approximate weights

10K WEDDING BANDS



Free
Wedding Band Display
Total approx weight 250g



Size	5	6	7	8	9	10	11	12	13
	gm	gm	gm	gm	gm	gm	gm	gm	gm
2mm	1.5	1.7	1.8	1.9	2	2.2	2.3	2.4	2.5
3mm	2.1	2.1	2.4	2.4	2.5	2.5	2.6	2.7	3.0
4mm	2.7	2.7	3	3.1	3.2	3.3	3.4	3.5	3.7
5mm	3.1	3.4	3.7	3.9	4	4.1	4.2	4.4	4.6
6mm	3.8	3.9	4.1	4.4	4.6	4.7	5.0	5.2	5.5
7mm	4.5	4.8	4.9	5.2	5.6	5.8	5.9	6.0	6.7
8mm	4.8	5.4	5.5	6.1	6.2	6.4	6.7	6.9	7.3

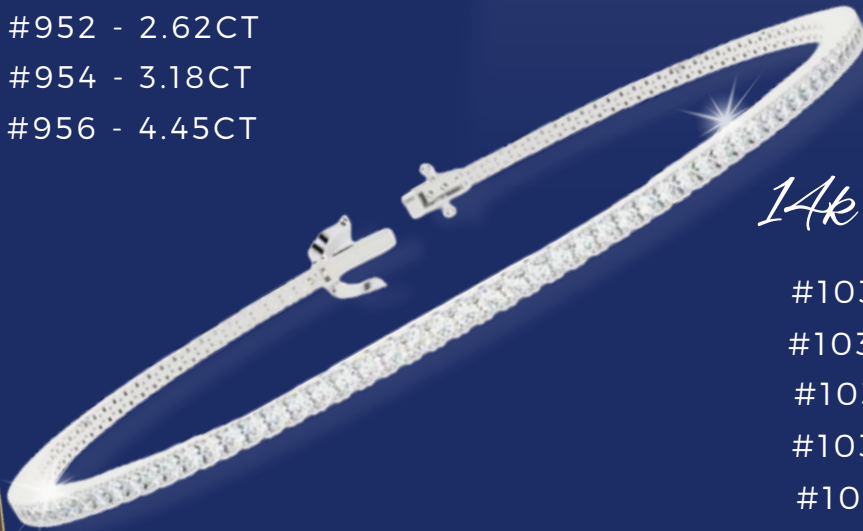
10K white gold wedding bands are also available with similar approximate weights.

*approximate weights

DIAMONDS

14k Classic Bracelet (7")

- #948 - 1.07CT
- #950 - 1.97CT
- #952 - 2.62CT
- #954 - 3.18CT
- #956 - 4.45CT



14k Solitaire Pendants

- #1033 - 0.05CT
- #1035 - 0.08CT
- #1037 - 0.10CT
- #1039 - 0.15CT
- #1041 - 0.17CT
- #1039 - 0.15CT
- #1041 - 0.17CT



14k Solitaire Earrings

- #958 - 0.05CT
- #960 - 0.10CT
- #962 - 0.15CT
- #964 - 0.20CT
- #966 - 0.25CT



AVAILABLE IN
WHITE & YELLOW GOLD

*NATURAL DIAMONDS:
GH COLOR & SI CLARITY

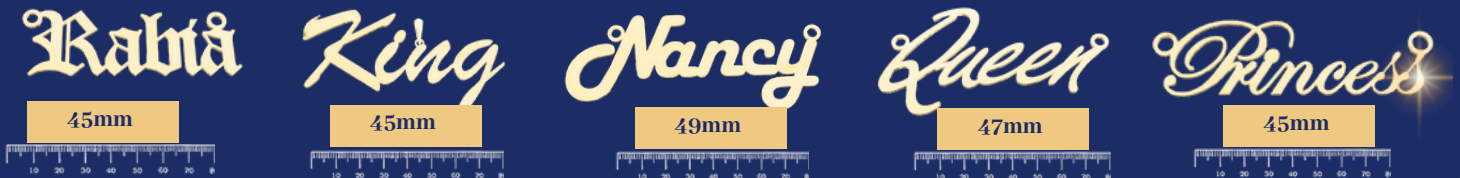
Natural Diamonds

CUSTOM ORDER

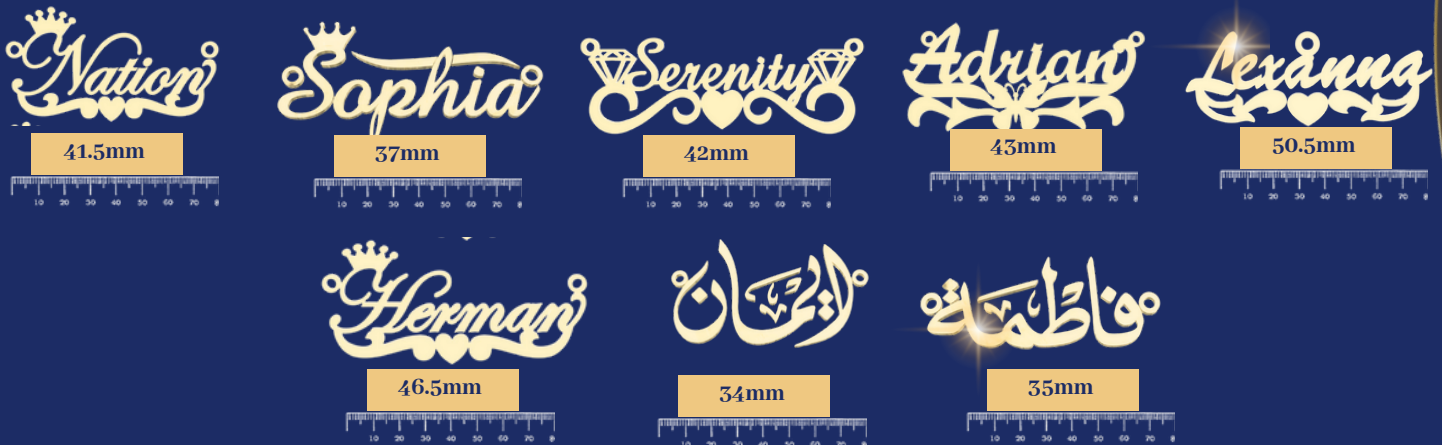
10K, 14K & 18K CUSTOM NAME PLATES

Approx. weight range: 1.5 - 4.7 gms
Delivery time: 1 Week

\$ 150 + gold/gm



\$ 200 + gold/gm



\$ 250 + gold/gm



JOIN OUR WHATSAPP COMMUNITY

Get daily updates on our new arrivals



Fancy Items



Religious Charms & Rings



Assorted Charms



Solid & Hollow
Bracelets

SERVICES

by our in-house designers

Charm, Ring, Earrings

Monterrey

Charms

Custom Name (Charms, Rings
& Earrings)



Heavy Chains

Custom Heavy Chains



Memory Pendants

Picture Pasting



Bracelets

Engraving



Flyers with your logo

Custom Design (for your
flyers/ banners)

Other Services



*Celebrating three successful
years of trust, service, and
quality that shines bright.*

A-One Gold & Diamonds,
7500 Bellaire Blvd, Suite 400, 4th Floor
Houston, Tx 77036

Store: +1 713-999-7868
Email: marketing@aonegnd.com

FOLLOW US ON SOCIAL MEDIA
FOR LATEST UPDATES

