

## COMMANDER 114



### AIRCRAFT

*Make & Model :* Rockwell 114  
*Serial Number :* 14243  
*Registration :* C-GVWP  
*Manufacture Year :* 1977  
*Base/Location :* Salmon Arm, BC  
*Total Airframe Time :* 3,727 Hrs  
**List Price : (REDUCED) \$129,000 USD**

### ENGINE

*Type & Model :* Lycoming IO-540-T4B5D  
*Engine Serial Number :* L-16100-48A  
*Engine Hours :* 30 SMOH

### PROPELLER

*Type & Model :* Hartzell HC-C3YR-1RF/F7693F  
*Serial Number :* PA1118B  
*Total Time :* 664 SNEW

### PAINT/INTERIOR

- Paint Two toned Blue on White 7/10
- Interior grey leather 5/10

### AVIONICS/RADIOS

- JPI EDM830 Engine Analyzer
- Garmin GNS-480 GPS/NAV/COM
- Garmin GI-102A Indicator
- Garmin GMX-200 Display
- King KMA-20 Audio Panel
- MAC 1700 NAV/COM
- King KI-203 Indicator
- Garmin GTX-327 Transponder w/ uAvionix Tail Beacon (ADSB Out)
- NAT 4 place intercom
- Century IIB A/P (Inop)

### AIRCRAFT SUMMARY

The Commander 114 is prized for its double doors, expansive cabin and luxe leather comfort as a premier x-country machine. This one has a freshly overhauled motor, with only 30 hours on it. With ADSB out, this plane is a very comfortable cruiser, excellent performance and payload as well.

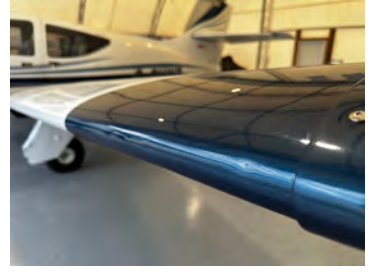
## FEATURES & OTHER INFORMATION

- All logs since new
- Annual Completed March, 2024
- Prop strike in 2015
- Sidewinder Tug, Charger and spare Battery
- Bruce custom cover, chocks & tie-downs with custom duffle bag
- Trickle or full battery charger - booster with easy connect plug
- 2 Bose A30 headphones. 2 additional headphones.
- 2 after market windshield shades can be placed anywhere
- Stratus II with mount
- Oxygen tank with two masks
- Emergency first aid kit

## PHOTOS











SPECIFICATIONS ARE SUBJECT TO VERIFICATION UPON INSPECTION. THIS AIRCRAFT IS OFFERED SUBJECT TO PRIOR SALE OR LEASE AND MAY BE WITHDRAWN FROM THE MARKET WITHOUT PRIOR NOTICE.