

INSTALLATION PROCESS

Armor Tough Coatings Signature Series



STEP 1: PREPARATION

Preparation includes diamond grinding and/or shot blasting. Dust is minimized by having all grinders hooked up to vacuum systems.



STEP 2: RECONSTRUCTION

Armor Tough fillers are used to fix pits and cracks before the process begins. This is a 2 component polyurethane fast setting filler.



STEP 3: BASECOAT

Armor Tough's 100% solids, self-priming basecoat is mixed and applied.



STEP 4: BROADCASTING

Immediately after the basecoat application, the flake is generously broadcast by hand, providing both color and texture to the floor.



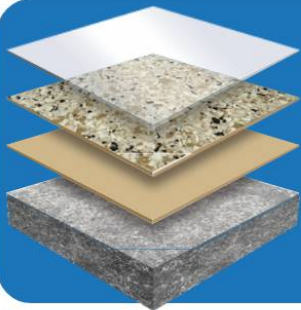
STEP 5: SCRAPING

Once the basecoat is fully cured the floor is scraped and vacuumed to remove any loose or vertical standing flake.



STEP 6: CLEAR COAT

The final step is to roll out the uv stable polyaspartic clear coat.



- ATC POLY TOPCOAT
- ATC CHIPS OR INDUSTRIALIZED QUARTZ SAND
- ATC BASECOAT
- PROPERLY PREPARED CONCRETE



SCAN FOR INFO!



DECORATIVE CHIPS

FLOOR COATING PAINT CHIPFLAKES

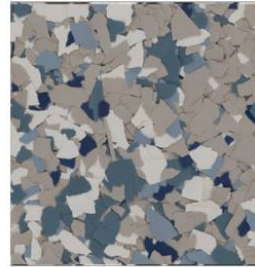
Our **Decorative Chip Flakes** are integrally colored and are produced in our standard **1/4"** size.

1/8" and 1/16" chip sizes are available by special order.

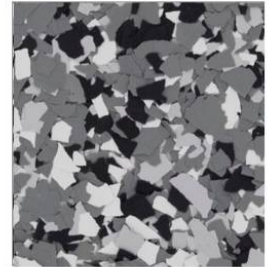


NOW YOU CAN GET FINANCING THAT FITS YOUR BUDGET!

FLEXIBLE PAYMENT OPTIONS AVAILABLE, JUST ASK!



STONEWASH



WOMBAT

Choose from our standard 17 color blends!*

ASK ABOUT SPECIAL ORDER BLENDS!



AUTUMN BROWN



CABIN FEVER



COYOTE



CREEKBED



DOMINO



FEATHER GRAY



GLACIER



GRAVEL



NIGHTFALL



ORBIT



OUTBACK



SAFARI



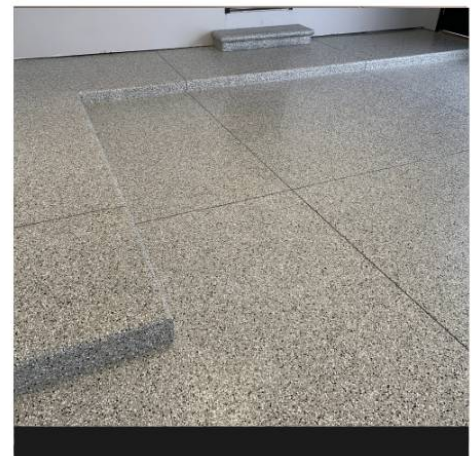
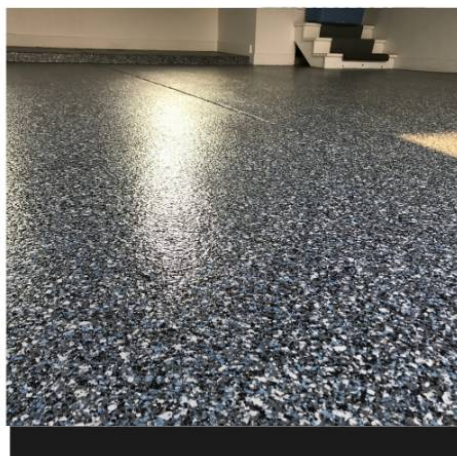
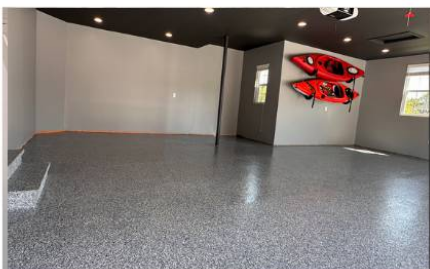
SHORELINE



STARGAZER



TIDAL WAVE



2130 E Hemphill Rd
Burton MI 48529
248-716-0089
www.armortoughcoatings.com



*Additional color blends are available by special order. Printed images may differ from actual color blends.