



CHU FENG HEAVY INDUSTRY

嘉峰重工

山东嘉峰重工机械有限公司

SHAN DONG CHU FENG HEAVY INDUSTRY MACHINERY CO., LTD.

地址：山东省济南市济阳区同河街道滨河街7号

电话：+86 13256139678

传真：0531-81178180

邮箱：sales@cfmglift.com

网址：www.cfmglift.com

Address: No. 7, Binhe Street, Huine Street, Jiyang District,

Jinan City, Shandong Province

Tel: 86 13256139678

Fax: 0531-81178180

Email: sales@cfmglift.com

Website www.cfmglift.com





COMPANY PROFILE

公司简介

山东嘉峰重工机械有限公司是一家集设计、研发、销售于一体的制造型企业，专业制造液压升降机、升降平台、铝合金升降平台、登车桥、高空作业平台等机械设备。公司技术力量雄厚，工艺先进合理，检测设备齐全。公司产品具有设计新颖、结构合理、升降平稳、载重安全、操作简单、维护方便等优点。拥有一批多年从事升降机械研发与制造的专业技术人才与专业管理人才。产品共有八大系列，六十多个品种，规格齐全。广泛应用于各个行业，如工矿企业、生产流水线、铁路、机场、军用、车站码头、货物装卸升降、厂房工地、仓储物流、高空设备安装等场合，产品畅销全国各地。公司自成立以来经全体技术人员和职工的不懈努力，取得广大客户的信赖和支持，还可根据客户要求量身订做，充分做到客户至上，服务到位，你们的要求就是我们的奋斗目标。

经营理念：公司秉承“质量第一，客户至上”的宗旨不断进取，力求完美，以一流的产品质量，优质的售后服务满足广大客户的需求。以诚信，创新，高效，优质为宗旨，以品质优良，服务一流的经营理念，迎接市场的发展。



生产设备展示

PRODUCTION EQUIPMENT DISPLAY



企业风采

CORPORATE STYLE



企业文化

CORPORATE CULTURE

共同愿景

创新博强 追求卓越

企业精神

求实创新 追求更好

管理理念

工作无小事 岗位无自由

成本理念

成本决定效益

人才理念

想干+会干+实干就是人才

核心理念

职工与企业共发展 企业与职工共分享

企业作风

团结 奋进 求真 务实

安全理念

安全就是效益 平安就是幸福

质量理念

质量就是企业生存之本

学习理念

在工作中学习 在学习中成长

产品应用

应用范围： 适合于机场候机楼、车站、码头、商场、体育场馆、小区物业、厂矿车间等较大范围的作业。



自行式升降作业平台



型号 Model	最大平台 高度(m)up	载重 load(kg)	台面尺寸 Platform size(m)	外形尺寸(护栏折叠) Outline dimension/guardrail folding(m)	起升电机 Lifting Motor	整机质量 Overall quality(kg)
CFPT0608	6	45	2.27 × 1.1	2.48 × 1.19 × 1.66	24v/3.3k	217
CFPT0810NI	8	23	2.27 × 0.8	2.48 × 0.83 × 1.95	24v/3.3k	226
CFPT0810	8	45	2.27 × 1.1	2.48 × 1.19 × 1.78	24v/3.3k	236
CFPT1012	10	32	2.27 × 1.1	2.48 × 1.19 × 1.91	24v/3.3k	264
CFPT1214	11	32	2.27 × 1.1	2.48 × 1.19 × 2.03	24v/4.5k	298
CFPT1416	13	23	2.64 × 1.1	2.85 × 1.25 × 2.10	24v/4.5k	360
CFPT039ZP	3.5	24	1.34 × 0.7	1.47 × 0.76 × 1.73	24v/0.8k	860
CFPT039ZF	3.5	24	1.15 × 0.7	1.32 × 0.76 × 1.52	24v/0.8k	660
CFPT0406M	3.5	24	1.29 × 0.7	1.42 × 0.76 × 1.47	12v/0.8k	460

自行式升降作业平台自身具有行走和升降功能，用控制手柄控制行走方向，行走可调速并有刹车装置，用电瓶带动直流电机进行行走和升降，也可选用交流电机或柴油机进行行走和升降，还可选用无线电子遥控器进行升降，不需要人工牵引，不需外接电源，移动灵活方便，使高空作业更方便快捷，是现代企业高效安全生产理想高空作业的设备。

Self-propelled scissor lift has its own walking and lifting function, with the control handle to control the direction of running, speed can walk and a brake device, battery driven DC motor running and movements, may also choose to AC motor or diesel engine running and movements, can also use wireless electronic remote control movements, without the need for manual traction and does not need an external power supply, flexible and convenient in movement, high-altitude operations more efficient and convenient is modern enterprise, safety production ideal high-altitude operations equipment.



警示警音



电磁换向阀



电瓶供电系统



液压泵站动力系统



带刹车橡胶实心轮胎



安全检修支撑杆



紧急下降系统



自动坑洞保护系统



主要特点：

- 用控制手柄控制行走方向，行走可调速并有刹车装置，用电瓶带动直流电机进行行走和升降。
- 也可用交流电机或柴油机进行行走和升降。还可选用无线电子遥控器进行升降。
- 不需要人工牵引，不需外接电源，移动灵活方便，使高空作业更方便快捷。

履带式升降作业平台



产品型号 Type	平台尺寸 (mm) Platform	载重 (kg) Load	外形尺寸 (护栏折叠) m Dimension (guardrail folding)	平台延伸尺寸 (m) Platform extension size	整机重量 (kg) Weight
CFPT0810L	2.27 × 1.1	45	2.47 × 1.39 × 1.86	0.	255
CFPT1012L	2.27 × 1.1	32	2.47 × 1.39 × 2.53	0.	284
CFPT1214L	2.27 × 1.1	32	2.47 × 1.39 × 2.67	0.	348

首先升降平台在升降过程中的缓冲力量可能要比自重多好几倍，为了能够使升降平台稳定的升降还要保证履带底盘的安全所以在设计之初给升降机底盘上面加装了液压支撑系统。

以往的升降平台的电控系统只是简单的控制升降，而履带式升降作业平台的控制系统要在控制升降的基础上兼容前后行走、左右转向、液压支撑等高复杂电子分配项目，为此我们通过不断地研究实验最终选用PLC电子计算及编程控制系统，所有的液压油路的分配全部采用电子多路换向阀来分派控制！

First of all, the buffer force of the lifting platform during the lifting process may be several times more than its own weight. In order to make the lifting platform stable and to ensure the safety of the crawler chassis, a hydraulic support system was added to the elevator chassis at the beginning of the design. In the past, the electronic control system of the lifting platform simply controlled the lifting, and the control system of the crawler lifting platform should be compatible with high - complex electronic distribution projects such as forward and backward walking, left and right steering, and hydraulic support on the basis of controlling the lifting. Continuous research and experimentation finally selects PLC electronic calculation and programming control system, all hydraulic oil circuit distribution uses electronic multi - way directional valve to assign control!



履带橡胶轮胎



安全检修支撑杆



紧急下降系统



倾角开关精准测控

主要特点：

- 轻松应对野外复杂路况
- 平台控制和远程控制可选
- 6 - 10米作业高度
- 320kg负载能力
- 长周期48v电源
- 零内转弯半径
- 在全高度衍生功能
- 支架可选
- 平台和地面控制装置的紧急停车
- 驱动功能的比例控制
- 负载、大小和高度可定制

产品应用

应用范围： 适用于：复杂路况工地，厂房，创意场馆幕墙清洁、灯具置换维修等，电力行业的电力试验、变电检修、铁塔维修，还适用于军工、航天、石油等行业。



移动式升降作业平台



产品型号 Type	台面尺寸 (mm) Platform	载重 (kg) Load	最大平台高度 (m) Maximum platform height	外形尺寸 (m) Dimension	整机重量 (kg) Weight
SJY0.5-4	2100 × 830	500	4	2250 × 950 × 1100	800
SJY0.5-6	2100 × 820	500	6	2250 × 950 × 1200	880
SJY0.5-8	2100 × 930	500	8	2250 × 1060 × 1380	1050
SJY0.5-10	2100 × 1230	500	10	2250 × 1350 × 1530	1360
SJY0.5-12	2550 × 1530	500	12	2796 × 1670 × 1750	2260
SJY0.5-14	2812 × 1530	500	14	3067 × 1730 × 1810	2400
SJY0.5-16	2812 × 1600	500	16	3067 × 1810 × 2080	3500
SJY0.5-18	3070 × 1600	500	18	3321 × 1810 × 2080	3900
SJY1.0-4	2100 × 1200	1000	4	2250 × 1350 × 1180	1250
SJY1.0-6	2100 × 1200	1000	6	2250 × 1350 × 1300	1400
SJY1.0-8	2100 × 1200	1000	8	2250 × 1350 × 1420	1585
SJY1.0-10	2100 × 1200	1000	10	2250 × 1350 × 1530	1700
SJY1.0-12	2550 × 1530	1000	12	2796 × 1670 × 1750	2560
SJY1.0-14	2812 × 1530	1000	14	3067 × 1750 × 1810	2765

移动式升降作业平台多采用剪叉式升降结构，剪叉升降结构由济钢锰钢矩形管制作，该系列产品具有移动灵活、升降平稳、操作方便、载重量大等特点。该系列产品多采用电动液压做升降动力，也可根据需要配备手动液压升降装置，动力形式有多种多样：单相220v交流电源、三相380v交流电源、直流12v（24v、36v、48v、60v）、交直流两用或者是柴油机。移动方式也多种多样，可以人工手动移动、人工辅助移动、自行走、轨道电动移动等多种方式。该系列产品液压系统配件和电器配件均采用国内外知名品牌的产 品，产品质量有保证。主要适用于工矿车间、企业、车站、码头、大厦、展馆等各种高空作业场所。

Mobile scissor lift with scissor lift structure, fork lifting structure by Shanghai Baosteel manganese steel rectangular tube production, this product has the characteristics of flexible movement, stable lifting, convenient operation, large carrying capacity etc.. This series of products using electric hydraulic lifting power, also can be equipped with a manual hydraulic lifting device, driving a variety of forms: 220V single - phase AC power, three - phase 380V AC power supply, DC 12V (24V, 36V, 48V, 60V), AC / DC or diesel engine. There are many ways to move, which can be manually moved, manual, mobile, and other ways. This series of hydraulic system parts and electrical accessories are used at home and abroad well - known brand products, product quality assurance. The utility model is mainly suitable for various work places such as factories and mines, enterprises, stations, docks, buildings, exhibition halls, etc..



高压油泵



无痕轮胎



安全护栏



牵引杆



主要特点：

- 采用剪叉式升降机构，由济钢锰钢矩形管制作。
- 具有移动灵活，升降平稳，操作方便，载重量大等特点。
- 采用电动液压做升降动力。

小履带式升降作业平台



产品型号 Type	平台尺寸 (mm) Platform	载重 (kg) Load	外形尺寸 (护栏折叠) m Dimension (guardrail folding)	平台延伸尺寸 (m) Platform extension size	整机重量 (kg) Weight
CFPT045ZS	1.23 × 0.655	200	1.27 × 0.79 × 2.05	0.55	790

小履带式升降作业平台车身外型优美，整车小巧，操作灵活；适合在室内或大理石地面作业，电池驱动，噪音小，无污染，选用耐用、不易刮伤地面、不易粘碎屑、防滑的履带。

产品特点：应急下降系统、油管防爆系统、防雨式控制箱、紧急停止按钮、平台自锁门、DC电源。

The small crawler lifting work platform has a beautiful appearance, a compact vehicle, and flexible operation; suitable for indoor or marble floor operations, battery - driven, low noise, no pollution, durable, not easy to scratch the ground, not easy to stick to debris, and non - slip track.

Product features: emergency descent system, oil pipe explosion - proof system, rainproof control box, emergency stop button, platform self - locking door, DC power supply.



履带橡胶轮胎



安全检修支撑杆



防爆油缸



倾角开关精准测控

特殊移动式升降作业平台



辅助自行式升降作业平台 The self-propelled lift operations platform



二轮牵引式升降作业平台/Two wheel traction lifting platform



台面伸缩式升降作业平台/Mesa telescopic lift work platform



手压泵
Hand pressure pump

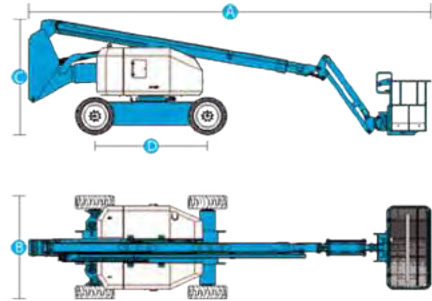


柴油机式升降作业平台
Diesel engine lifting platform



辅助行走式升降作业平台
Auxiliary walking type lifting platform

电动曲臂式高空作业平台



自行曲臂式高空作业平台动力分为柴油发动机型、直流马达型、升降臂有二节、三节、升降高度从10米至32米、所有机型全高度行走、曲臂延伸升降、转盘360°旋转。不同机型配备不同的动力源，以适应室内室外的不同要求。使用柴油机或者蓄电池动力驱动，配合有效的几何设计和超长的跨越半径，使该款机型可以有效地避开棘手的障碍物作业。紧凑的工业设计底盘，优异的原地零尾摆旋转能力，因此低于20米的自行曲臂式升降作业平台能在有限的空间灵活操作。自行曲臂式升降作业平台是您维修、安装、修剪等高空作业的理想工具。

The power of the self-propelled crank arm aerial work platform is divided into diesel engine type, DC motor type, the lifting arm has two sections, three sections, the lifting height is from 10 meters to 32 meters, all models are full-height walking, the crank arm extends and lifts, and the turntable rotates 360°. Different models are equipped with different power sources to meet the different requirements of indoor and outdoor. Driven by diesel engine or battery power, combined with effective geometric design and long spanning radius, this model can effectively avoid difficult obstacles. The compact industrial design chassis and excellent in-situ zero tail swing rotation capability, so the self-propelled crank arm lifting work platform of less than 20 meters can be flexibly operated in a limited space. The self-propelled crank arm lifting platform is your ideal tool for high-altitude operations such as maintenance, installation and trimming.

项目 Item	GTZZ10D	GTZZ12D	GTZZ14D	GTZZ16D	GTZZ18D	GTZZ20D
最大工作高度 m Working height	12	14	16.05	17.8	20	21.9
最大平台高度 m Maximum platform height	10	12	14.05	15.8	18	19.9
最大水平延伸 m Maximum horizontal extension	5.8	8	8.1	10	10.8	12.3
最大跨越高度 m Maximum span height	4.78	5	7.6	7.6	9.2	9.2
平台尺寸 L x W Platform size	1.1 x 0.65	1.1 x 0.65	1.53 x 0.76	1.53 x 0.76	1.53 x 0.76	1.53 x 0.76
最大承载能力 kg Maximum load capacity	200	200	230	230	230	230
爬坡度 Grade	25%	25%	30%	30%	25%	25%
最大工作坡度 Maximum working gradient	3 ° /3 °	3 ° /3 °	3 ° /3 °	3 ° /3 °	3 ° /3 °	3 ° /3 °
行驶速度（收车状态） Driving speed (car parked state)	3	3	5	5	5	5
行驶速度（举升状态） Travel speed (lifting state)	0.8	0.8	0.8	0.8	0.8	0.8
轮胎规格 Tire specifications	0.59 x 0.19	0.59 x 0.19	28 x 9-15	28 x 9-15	33 x 12-30	33 x 12-30
自重 kg Weight	4800	5500	6270	6720	8080	8200

柴油直臂式高空作业平台



柴油直臂式高空作业平台能适应特定作业环境，即能在潮湿、腐蚀性强、多尘、高温、低温环境下工作。

机器具有自动行走的功能，能够在不同工作状态下，快速、慢速行走，只需一个人在高空作业时可操作机器连续完成升降、前进、后退、转向、回转等动作，较传统的液压平台大大提高了工作效率，减少操作人员数量及劳动强度。

Diesel straight arm aerial work platform can adapt to specific operating environment, that is, it can work in humid, corrosive, dusty, high temperature and low temperature environment.

The machine has the function of automatic walking. It can travel at fast and slow speeds under different working conditions. Only one person can operate the machine to continuously complete lifting, forwarding, retreating, steering, and rotating movements when working at heights. Compared with traditional hydraulic platforms Greatly improve work efficiency, reduce the number of operators and labor intensity.

项目Item	CFPT22S	CFPT26S	CFPT32S	CFPT38S	CFPT42S	CFPT58S
整机全长mm Overall Length	10150	12100	14300	14060	14950(12000)	19450/14600
整机全宽mm Overall Width	2490	2490	2490/3800	2490/3800	2490/3800	2490/5030
整机全高mm Overall Height	2800	3050	3070	3000	3050	3050
轴距mm Wheel Base	2500	3000	3800	3800	3800	5220/4590
最大工作高度m Maximum Working Height	23.7	27.9	34.2	40.2	43.6	58.6
最大平台高度m Maximum Platform Height	22	26.2	32.2	38.2	41.6	56.6
最大工作幅度m Maximum Working Range	18.3	23.2	24.6	23.9	25	25.1
最大承载重量 kg Maximum Load Capacity	340	340	230/340	230/340	230/450	230/450
臂架变幅范围 ° Boom Luffing Range	-5 ~ +75	-5 ~ +75	-6 ~ +75	-7 ~ +75	-1 ~ +75	-1 ~ +80
曲臂变幅范围 ° Crank Arm Luffing Range	-65 ~ +70	-65 ~ +70	360	-60 ~ +70	-60 ~ +70	-45 ~ +75
转台回转角度 ° Rotation Angle of Rotating Platform	360	360	/	360	360	360
最大尾摆mm Maximum Tail Wagging	1550	1400	2085/1430	2085/1430	2390/1725	2320
平台尺寸mm Platform Size	2400 × 900	2400*900/1800*800	2400*900	2400*900	2400*900	2400*900
平台回转角度 ° Rotation Angle of Platform	180	180	180	160	160	160
整机重量 kg Total Weight	12500	16600	18400	20600	21900	27200
最高行驶速度 km/h Maximum Travel Speed	6	6.1	5	5	5	4.5
最小转弯半径m Minimum Turning Radius	6	6.7	10.8/8.2两转(Two-turn) 8.8/6.8四转(Two-turn)	10.8/6.8两转(Two-turn) 5.8/6.8四转(Two-turn)	10.8/6.8两转(Two-turn) 5.8/6.8四转(Two-turn)	9.5/6.6
最小离地间隙mm Minimum Ground Clearance	230	320	260	320	320	250
最大爬坡能力% Maximum Grade Ability	45	45	45	40	40	45
轮胎规格 Tire Specification	355/55D625	385/65 - 22.5	385/65D22.5	445/50D710	445/50D710	445/50D710
发动机型号 Engine Model	Perkins404D - 22T	福田康明斯 Foton Cummins QSP2.8 - 71HP	Perkins 1104D - 44T	Perkins 1104D - 44T Cummins B3.3 - 65HP	Perkins 1104D - 44T	Deutz TCD3.6L4
发动机额定功率 kw(r/min) Rated Power of Engine	43/(2600)	53/(2200)	55.5(2400)	55.5/2400 63/2600	55.5/2400	74.4/2300

柴油曲臂式高空作业平台



柴油曲臂式高空作业平台自带动力系统、工作高度从6米至58米，在大臂前端装有短臂可自由调节、并有多种配置，直臂自行式升降作业平台提供了卓越性能和极好的耐用性，可选配置包括两轮和四轮驱动，粗糙地面和多种动力形式，柴油直臂式高空作业平台具有自行走功能，能够在工作状态下自由行走、后退、转弯、移动灵活、操作方便，升降自如，一人操作，即可完成。

Diesel crank - type aerial work platform comes with a power system, working height from 6 meters to 58 meters, with a short arm at the front of the boom can be adjusted freely, and has a variety of configurations, straight arm self - elevating work platform provides excellent performance And excellent durability, optional configurations include two - wheel and four - wheel drive, rough ground and a variety of power forms, diesel straight arm aerial work platform has self - walking function, can freely walk, back, turn, Flexible movement, easy operation, free movement, can be completed by one person.

项目Item	CFPT14	CFPT14J	CFPT14JD	CFPT18A1	CFPT24A
整机全长mm Overall Length	5780	6690	6420	9080	11280
整机全宽mm Overall Width	2260	2260	1750	2490	2490
整机全高mm Overall Height	2130	2130	2000	2680	3000
轴距mm Wheel Base	2100	2100	2010	2500	3000
最大作业高度m Maximum Working Height	15.9	15.75	15.5	20.1	26.08
最大平台高度m Maximum Platform Height	14.2	14.05	13.8	18.4	24.38
最大工作幅度m Maximum Working Range	8.09	8.22	8	11.9	18.9
最大承载重量 kg Maximum Load Capacity	230	230	230	230	230
一臂变幅范围 ° 1st Boom Luffing Range	0 ~ +60	0 ~ +60	0 ~ +60	0 ~ +70	-1 ~ +70
二臂变幅范围 ° 2nd Boom Luffing Range	-22 ~ +75	-8 ~ +75	-8 ~ +75	0 ~ +75	-35 ~ +68
曲臂变幅范围 ° Crank Arm Luffing Range	-	-60 ~ +80	-60 ~ +80	-65 ~ +75	-60 ~ +70
转台回转角度 ° Rotation Angle of Rotating Platform	355	355	355	360	360
最大尾摆mm Maximum Tail Wagging	0	0	0	0	1330 (臂升)
平台尺寸mm Platform Size	1830*760*1150	1830*760*1150	700*1400*1150	1830*760	2400*900
平台回转角度 ° Rotation Angle of Platform	180	180	180	180	180
整机重量 kg Total Weight	6800	6900	6500	10600	17800
最高行驶速度 km/h Maximum Travel Speed	6.1	6.1	5.2	6	5
最小转弯半径m Minimum Turning Radius	4.5	4.5	3.15	6	4.2m (四转) /6.7m (两转)
最小离地间隙mm Minimum Ground Clearance	250	250	200	230	260
最大爬坡能力% Maximum Grade Ability	45	45	30	45	45
轮胎规格 Tire Specification	315/55D20	315/55D20	250 - 15	355/55D625	18/625
发动机型号 Engine Model	Perkins404D - 22	Perkins404D - 22	/	Perkins404D - 22	QSF2.8 71BHP/KD 2504 TCR
发动机额定功率 kw(r/min) Rated Power of Engine	38/ (3000)	38/ (3000)	/	38/ (3000)	53(2200)/55.4(2600)

铝合金升降作业平台



桅数 Number of masts	型号 Model	平台最大高度(m) Platform height	额定载荷(kg) Rated load	平台尺寸(m) Platform size	电源电压 Voltage(v/hz)	功率(kw) Power	整机质量(kg) Weight	外形尺寸 (m) Outline Dimensions
单桅	GTWY06	4	100	0.60*0.60	220/380	1.1	300	1.30*0.80*1.98
	GTWY06	6	100	0.60*0.60	220/380	1.1	320	1.30*0.80*1.98
	GTWY08	8	100	0.60*0.60	220/380	1.1	340	1.30*0.80*1.98
	GTWY10	10	100	0.60*0.60	220/380	1.1	380	1.41*0.85*1.98
双桅	GTWY06S	6	200	1.05*0.50	220/380	1.5	450	1.31*0.85*1.98
	GTWY08S	8	200	1.15*0.60	220/380	1.5	560	1.41*0.85*1.98
	GTWY10S	10	200	1.32*0.60	220/380	1.5	680	1.59*0.90*1.98
	GTWY12S	12	200	1.42*0.60	220/380	1.5	720	1.69*0.90*1.98
	GTWY14S	14	200	1.55*0.60	220/380	1.5	780	1.90*1.00*2.30
三桅	GTWY10T	10	200	1.58*0.80	220/380	2.2	960	1.90*1.20*2.02
	GTWY12T	12	200	1.58*0.80	220/380	2.2	1050	1.90*1.20*2.02
	GTWY14T	14	200	1.60*0.80	220/380	2.2	1120	1.90*1.30*2.35
	GTWY16T	16	200	1.60*0.80	220/380	2.2	1200	2.00*1.30*2.65
四桅	GTWY12H	12	200	1.58*0.99	220/380	2.2	1050	2.00*1.35*2.02
	GTWY14H	14	200	1.58*0.99	220/380	2.2	1150	2.00*1.35*2.35
	GTWY16H	16	200	1.60*0.90	220/380	2.2	1250	2.10*1.40*2.95
	GTWY18H	18	200	1.60*0.90	220/380	2.2	1480	2.10*1.40*3.35

该系列产品主体结构采用高强度铝合金型材料，动力源可为电动、手动电瓶或柴油机控制，还可以根据用户需要加装遥控装置，设备占用空间小，重量轻，可在各房间或楼梯口间随意移动。外观美观，经久耐用，使用方便。

The main structure of this series of products is made of high-strength aluminum alloy material. The power source can be electric, manual battery or diesel engine control. You can also install remote control devices according to user needs. The equipment takes up little space and is light in weight. Move freely. Beautiful appearance, durable and easy to use.



紧急下降系统



远程遥控钥匙



水平仪



控制器



辅助行走装置

主要特点：

- 采用高强度优质铝合金材料。
- 造型美观、体积小、重量轻、运转灵活，推行方便。升降平稳、安全可靠。
- 轻盈的外观，能在极小的空间内发挥最高的举升能力。



全自走桅柱式高空作业平台



产品型号 Type	MG600 - 1S	MG750 - 1S	MG750 - 2	MG900 - 2
平台承载能力 Platform carrying capacity	125Kg	125Kg	200Kg	150Kg
工作高度 Working height	8m	9.5m	9.5m	11.0m
平台最大高度 Platform height	6m	7.5m	7.5m	9.0m
整车外形尺寸 Overall dimensions of the vehicle	1.36 × 0.79 × 2.08m	1.36 × 0.79 × 2.08m	1.5 × 1 × 2.08m	1.5 × 1 × 2.08m
平台尺寸 Platform size	0.78 × 0.7m	0.78*0.7m	1.0 × 0.7m	1.0*0.7m
爬坡度 Grade	25%	25%	25%	25%
最大允许角度 Maximum allowable angle	1.5 °	1.5 °	3 °	3 °
最小转弯半径 Minimum turning radius	0	0	0	0
轴距 Wheelbase	1.15m	1.15m	1.28m	1.28m
行驶速度 Driving speed	收起状态 Collapsed state	3km/h	3km/h	3km/h
	升起或延伸状态 Raised or extended	0.5km/h	0.5km/h	0.5km/h
离地间隙 Ground clearance	0.05m	0.05m	0.05m	0.05m
驱动轮尺寸 Drive wheel size	0.25 × 0.08	0.25*0.08	0.25*0.08	0.25*0.08
驱动电机 Motor	2 × 24V/0.4kw	2*24V/0.4kw	2*24V/0.5kw	2*24V/0.5kw
举升电机 Lifting motor	24V/1.1kw	24V/1.1kw	24V/2kw	24V/2kw
免维护电池 Maintenance - free battery	2 × 12V/105A	2*12V/105A	2*12V/115A	2*12V/115A
充电器 Charger	24V/12A	24V/12A	24V/12A	24V/12A
重量 Weight	880kg	910kg	1200kg	1450kg

全自走桅柱式高空作业平台使许多困难危险的工作变得更加容易化。这种高空升降平台的特点是小巧灵活，方便快捷。可以用一部升降平台代替室内脚手架和爬梯来达到您需要的高度，解决您的难题。同时，还可以节省您的费用和宝贵的时间。特别适合于机场候机楼、车站、码头、商场、体育场馆、小区物业、车间等较大范围的高空连续作业。

The fully self - propelled mast aerial work platform makes many difficult and dangerous tasks easier. The characteristics of this high - altitude lifting platform are small, flexible, convenient and fast. You can use a lifting platform instead of indoor scaffolding and ladders to reach the height you need and solve your problems. At the same time, it can also save your costs and precious time. It is especially suitable for large - scale continuous high - altitude operations such as airport terminals, stations, docks, shopping malls, stadiums, residential properties, workshops, etc.



限位开关



起升油缸



警示灯



链条



主要特点

- 高空作业可行走
- 无级变速
- 大角度转向系统
- 智能充电系统
- 延伸平台（此为选配项目）
- 高标准的结构
- 停电自锁功能
- 绿色环保
- 应急装置

产品应用

应用范围：广泛用于工厂、宾馆、餐厅、车站、影剧院、展览馆等场所，是保养机具、油漆装修、调换灯具、电器清洁保养等用途的最佳安全伴侣。



套缸式升降作业平台

GTTY - A 单梯防转型 (载重 : 200kg) GTTY - A Single ladder anti transformation (Load : 200kg)						
型号model	高度m height	外型尺寸m Dimensions	起升速度m/s Rising speed	平台尺寸m Platform size	电机功率kw Motor power	整机质量kg weight
GTTY - 6A	6	1.02 × 0.92 × 1.8	0.054	0.75 × 0.75	1.1	480
GTTY - 8A	8	1.16 × 0.92 × 2.05	0.044	0.8 × 0.8	1.1	580
GTTY - 10A	10	1.16 × 1 × 2.17	0.04	0.8 × 0.8	1.1	650
GTTY - 12A	12	1.4 × 1.23 × 2.23	0.03	0.8 × 0.8	1.1	900
GTTY - 14A	14	1.4 × 1.23 × 2.3	0.028	0.8 × 0.8	1.1	1075
GTTY - 15A	15	1.4 × 1.23 × 2.4	0.026	0.8 × 0.8	1.1	1200
GTTY - B 双梯防转型 (载重 : 150kg) GTTY - B 双梯防转型 (载重 : 150kg) GTTY - B dual ladder anti transformation (load: 150kg)						
GTTY - 16B	16	1.68 × 1.39 × 2.36	0.026	0.8 × 0.8	1.5	1350
GTTY - 18B	18	1.78 × 1.47 × 2.6	0.026	0.8 × 0.8	1.5	1430
GTTY - 20B	20	1.78 × 1.56 × 2.65	0.042	0.8 × 0.8	1.1 × 2	1650
GTTY - 21B	21	1.78 × 1.56 × 2.7	0.04	0.8 × 0.8	1.1 × 2	1700
GTTY - 22B	22	1.97 × 1.65 × 2.8	0.035	0.8 × 0.8	1.1 × 2	1850
GTTY - 23B	23	1.97 × 1.65 × 2.9	0.03	0.8 × 0.8	1.1 × 2	2000
GTTY - 24B	24	1.97 × 1.65 × 3.0	0.043	0.8 × 0.8	1.1 × 2	2200
GTTY - 25B	25	2.05 × 1.75 × 3.05	0.042	0.8 × 0.8	1.5 × 2	2350
GTTY - 26B	26	2.05 × 1.75 × 3.20	0.04	0.8 × 0.8	1.5 × 2	2450
GTTY - 28B	28	2.2 × 1.8 × 3.05	0.034	0.8 × 0.8	1.5 × 2	2500
GTTY - 30B	30	2.25 × 1.9 × 3.25	0.034	0.8 × 0.8	1.5 × 2	2800
GTTY 可倾斜式升降平台 (载重 : 150kg) GTTY Inclined lifting platform (Load:150kg)						
GTTY - 20	20	2.8 × 1.45 × 2.2	0.04	0.8 × 0.8	1.1 × 2	2350
GTTY - 22	22	2.9 × 1.45 × 2.25	0.04	0.8 × 0.8	1.1 × 2	2500
GTTY - 24	24	3 × 1.5 × 2.25	0.035	0.8 × 0.8	1.1 × 2	2650
GTTY - 26	26	3.1 × 1.5 × 2.3	0.03	0.8 × 0.8	1.5 × 2	2800
GTTY - 28	28	3.2 × 1.6 × 2.35	0.03	0.8 × 0.8	1.5 × 2	3000
GTTY - 30	30	3.2 × 1.6 × 2.35	0.03	0.8 × 0.8	1.5 × 2	3200



移动登车桥

项目 Item	DCQY6-0.9	DCQY8-0.9	DCQY10-0.9	DCQY12-0.9	DCQY15-0.9
主梁尺寸 mm Main beam size	160 × 80 × 4	160 × 80 × 5	160 × 80 × 5	200 × 100 × 5	200 × 100 × 6
副梁尺寸 mm Auxiliary beam size	100 × 50 × 3	100 × 50 × 4	100 × 60 × 4	120 × 60 × 5	160 × 80 × 5
额定载荷 kg Rated load	6000	8000	10000	12000	15000
变幅范围 Variable range	1100 - 1800	1100 - 1800	1100 - 1800	1100 - 1800	1100 - 1800
桥长 mm Bridge length	11400	11400	11400	11400	11400
桥宽 mm Bridge width	2000	2000	2000	2000	2000
实心轮胎 Solid tire	600 - 9	600 - 9	600 - 9	700 - 9	700 - 9
架子 Shelf	10#	10#	10#	12#	14#
舌板 Tongue plate	14	14	16	20	20
整机质量 kg Machine quality	2400	2600	2800	3500	5000



主要特点

- 1. 广泛应用于无装卸设备的货台及流动装卸场所，是与叉车配合使用的货物装卸辅助设备，可根据汽车车厢的高低调节高度。借助该设备，叉车能直接驶入汽车车厢内部进行批量装卸作业，只需单人操作，不需动力电源，即可实现货物的安全快速装卸，既能使您减轻劳动强度，又能成倍提高装卸作业效率，加快物料流通速度，获取更大的经济效益。
- 2. 适用场所：装卸车频繁、车型不一的大型企业、仓库、工厂、车站、码头、仓储物流基地等。



手压泵



液压支腿



尾板



控制器

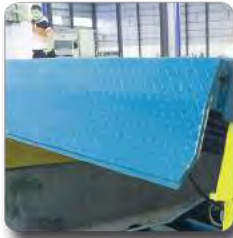
固定登车桥

项目 Item	DCQG6-0.6	DCQG8-0.8	DCQG10-0.6	DCQG12-0.6
台面尺寸 mm Table size	2000 × 2500mm	2000 × 2500mm	2000 × 2500mm	2000 × 2500mm
唇板 mm Lip plate	400mm	400mm	400mm	400mm
上浮 mm Rise	300mm	300mm	300mm	300mm
下浮 mm Float down	200mm	200mm	200mm	200mm
功率 kw power	0.75kw	0.75kw	0.75kw	0.75kw
地坑尺寸 mm Pit size	2080 × 2540 × 600mm	2080 × 2540 × 600mm	2080 × 2540 × 600mm	2080 × 2540 × 600mm



主要特点

- 1. 固定式登车桥用于仓储货台和邮政枢纽装卸，可根据货车车厢不同高度调节，即可调高调低。方便叉车驶入车厢，装卸自如，两侧设有防轧裙板，工作更加安全，提高效率。（可根据用户要求设计制造）
- 2. 产品优势：电操作简单，高度可任意调节，调节范围大，提高装卸效率，节省人力。
- 3. 适用场地：装卸车频繁，车型不一的大型企业。仓库码头仓储物流基地。邮政运输，物流配送等。



舌板



高压油泵



油缸



防撞块

移动式装卸平台



移动式装卸平台在现代物流已是一非常见的结构形式。它是企业物流链的起点与终点，是企业快速、安全周转产品及货物的一个装卸货操作平台。方便卸货，稳定性强，维修成本低。适用于装卸场所上各种车辆以及交通相对繁忙的场所。

移动式装卸平台是实现货物快速装卸的专用设备，它的自由升降可以适合任何车型就连1700mm的集装箱车都可以轻松操作，配合手动液压搬运车进入车厢，即可实现货物的快速装卸。它使企业减少大量的劳力，提高工作效应，获取更大的经济效益。该设备一端与货台等高，另一端搭在车厢后缘上，并能根据不同的车型及装车过程中车厢的变化，自动调整高度。该产品可根据用户的不同需要，在外形尺寸、承受载荷等方面作特殊设计。可广泛地应用于邮政、粮食、车站码头、海洋运输等行业。

Mobile loading and unloading platforms are already a very visible structure in modern logistics. It is the starting point and end point of the enterprise's logistics chain, and the enterprise is fast. A loading and unloading operation platform for safe turnover of products and goods. Convenient unloading, strong stability and low maintenance cost. It is suitable for various vehicles on loading and unloading sites and places with relatively heavy traffic. The mobile loading and unloading platform is a special equipment for fast loading and unloading of goods. Its free lifting can be suitable for any vehicle type. Even a 1700mm container truck can be easily operated. It can be used with a manual hydraulic pallet to enter the compartment to achieve rapid loading and unloading of goods. It enables enterprises to reduce a lot of labor, improve work efficiency, and obtain greater economic benefits. One end of the device is equal to the height of the cargo platform, and the other end is placed on the rear edge of the carriage, and can automatically adjust the height according to different models and changes in the carriage during the loading process. The product can be specially designed in terms of dimensions and load bearing according to the different needs of users. It can be widely used in postal, grain, station and dock, ocean transportation and other industries.

电动平车



电动平车，又称电动平板车、电平车、台车、过跨车、电动轨道车、地爬车等，是一种厂内有轨电动运输车辆，首先它是一种轨道型运输车辆，需要在地面上铺设轨道，轨道一般为工字型面接触道轨；其次它是电驱动车辆，在电机减速机驱动下自动运行，再次它是一种平板车，台面平整无厢盖，特殊情况下也可以是非平面但无厢盖，车体无方向盘只有前进后退方向(即使转弯也靠轨道转弯)。此种车辆具有结构简单、使用方便、承载能力大、不怕脏不怕砸、维护容易、使用寿命长等特点，因其方便、壮实、经济、实用、易清理等诸多优点，成为企业厂房内部及厂房与厂房之间短距离定点频繁运载重物的首选运输工具。

电动平车主要应用与动升降运水坯车等；砖厂、窑厂、耐火厂、陶瓷厂、焙烧厂等用的电动装窑车、电动出窑车等；工程、隧道、环卫用的电动运输车，电动自卸车，电动环卫清运车等。电动运输车和电动自卸车还应用于面粉厂，选矿厂，铸造厂，化工厂、炉料厂、养殖场等

Electric flat car, also known as electric flat car, level car, trolley, over-travel car, electric rail car, ground climbing car, etc., is a kind of rail electric transport vehicle in the factory. First of all, it is a rail type transport vehicle. The track needs to be laid on the ground, the track is generally an I-shaped surface contacting the track; secondly, it is an electrically driven vehicle, which automatically runs under the drive of a motor reducer, and again it is a flatbed, with a flat table without a cover, under special circumstances It can also be non-planar but without a cover, and the car body has no steering wheel and only forward and backward directions (even if turning, the city turns on the track). This kind of vehicle has the characteristics of simple structure, convenient use, large carrying capacity, no fear of smashing, easy maintenance, long service life, etc. Because of its convenience, robustness, economy, practicality, easy cleaning, and many other advantages, it has become an internal and internal factory building. The preferred transportation means for carrying heavy objects frequently at a short distance from the plant.

Electric flat cars are mainly used for dynamic lifting and transportation of billet vehicles, etc.; electric kiln loading vehicles and electric kiln discharging vehicles for brick factories, kiln factories, refractory factories, ceramic factories, roasting factories, etc.; electric vehicles for engineering, tunnels, and sanitation Transport vehicles, electric dump trucks, electric sanitation trucks, etc. Electric transport vehicles and electric dump trucks are also used in flour mills, mineral processing plants, foundries, chemical plants, furnace plants, breeding farms, etc.

导轨式升降作业平台



主要用各种工作层间货物上下运送，立体车库和地下车库二、三层高楼间、无法开挖地坑场所。顶层高度不能到达要求的场合等比较解决的狭小空间，我们将竭尽全力为你量身打造高效率的送货平台，产品液压系统设置防坠、上下层门互动连锁，各楼层和升降台工作面均可设置操作按钮，实现多点控制、产品结构坚固，承载量大，升降平稳、安装维护简单方便，是经济实用的低楼层间替代电梯的理想货物输送设备、根据升降台的安装环境和使用要求，选择不同的可选配置，可取得更好的使用效果，本产品主要应用于化工、高温、高压、电厂、核工业基地、炸药等防爆企业。最大承载10吨，实现多点控制，上下楼层互动连锁、达到安全使用。

Main goods between the working layer of the various transport, three-dimensional garage and underground garage, two and three layer buildings, not excavation pit places. The height of the top layer can not reach the requirements of the occasion of narrow space compared to resolve, we will strain every nerve for you to tailor the efficient delivery platform, hydraulic system is equipped with anti dropping, upper and lower door interlocking, each floor and lifting platform can be set button, multi point control, product structure strong, big load, smooth, simple and convenient installation and maintenance, is economical and practical low floor replacement elevator ideal cargo transport equipment, according to the requirements of the installation environment of elevator and use, choose different optional configuration, can achieve better results, the products are mainly used in chemical, high temperature and high pressure, power plant, nuclear industrial base, explosion-proof explosive enterprise. Maximum carrying capacity of 10 tons, to achieve more control, the upper and lower floors interactive interlocking, to achieve safe use.



壁挂式升降作业平台



电动门升降升降作业平台



固定剪叉式升降作业平台



固定剪叉式升降作业平台是一种升降稳定性好，适用范围广的货物举升设备，主要用于生产流水线高度差之间货物运送；物料上线、下线；工件装配时调节工件高度；高处给料机送料；大型设备装配时部件举升；大型机床上料、下料；仓储装卸场所与叉车等搬运车辆配套进行货物快速装卸等。根据使用要求，可配置附属装置，进行任意组合，如固定式液压升降平台的安全防护装置；固定式液压升降平台搭配活动搭板能与汽车平滑搭接，叉车、手动液压叉车都能方便、平稳的进行装卸作业，搭板的扭簧平衡作用使操作轻松自如，作业完毕平台与地面平整，不占据地面空间，不影响通行。电器控制方式、工作平台形式、动力形式等各种配置的正确选择，可最大限度地发挥升降平台的功能，取得最佳的使用效果。

The fixed scissor lifting platform is a kind of goods lifting equipment with good lifting stability and a wide range of applications. It is mainly used for the transportation of goods between the height difference of the production line; the material is on and off the line; the height of the workpiece is adjusted when the workpiece is assembled; Place the feeder to feed materials; when large-scale equipment is assembled, components are lifted; large-scale machine tools are loaded and unloaded; warehouse loading and unloading sites are matched with forklifts and other handling vehicles for fast loading and unloading of goods. According to the requirements of use, it can be equipped with accessory devices and make any combination, such as the safety protection device of the fixed hydraulic lifting platform; the fixed hydraulic lifting platform can be smoothly overlapped with the car with the movable board, and the forklift and manual hydraulic forklift can be convenient and stable For loading and unloading operations, the balance function of the torsion spring of the slab makes the operation easy and free. After the operation is completed, the platform is level with the ground and does not occupy ground space and does not affect traffic. The correct selection of various configurations such as electrical control mode, work platform form, power form, etc. can maximize the function of the lifting platform and achieve the best use effect.



高压油泵

液压油缸

安全护栏

控制器

升降舞台



升降舞台经过多年的发展，形成了以铝合金升降舞台、剪叉式液压升降舞台、旋转液压升降舞台、车载液压升降舞台等为主多个产品系列。我们的旋转升降舞台底部升降机构采用剪叉升降结构，升降动力为电动液压，可以360度自由旋转，旋转速度可以调节，广泛应用于剧院、歌厅、KTV、展馆、汽车4s销售店等，旋转升降舞台的旋转功能，便于全方位立体展示产品或作品，展示效果非常好。

After years of development, the lifting stage has formed a number of product series based on aluminum alloy lifting stage, scissor hydraulic lifting stage, rotary hydraulic lifting stage, and vehicle-mounted hydraulic lifting stage. The bottom lifting mechanism of our rotating lifting stage adopts a scissor lifting structure. The lifting power is electro-hydraulic, which can rotate freely in 360 degrees, and the rotation speed can be adjusted. It is widely used in theaters, karaoke halls, KTVs, exhibition halls, automobile 4s sales stores, etc. The rotating function of the lifting stage is convenient for all-round three-dimensional display of products or works, and the display effect is very good.

卸猪台



该系列升降平台适用于各大养猪场、肉食厂，生猪屠宰场等，可利用卸猪台连接货车与地面，卸猪台（上猪台）坡度要小于等于20度，让猪缓慢自行上下车，便于转移运输，避免摔伤。

产品介绍：卸猪台大型养猪场、养鸭厂和屠宰场等各种大型养殖场专用的液压装猪设备

适用场合：该系列产品主要用于大型养猪场、养鸭厂和屠宰场等各种大型养殖场

主要用途：养猪场专用液压卸猪台、上猪台、登猪桥，养鸭场专用卸鸭台，利用该设备液压升降，装卸车简单易操作。

动力选配：交流220V(标准配置)、交流380V电源、直流电源、手动泵

This series of lifting platforms are suitable for major pig farms, meat factories, pig slaughterhouses, etc. The unloading platform can be used to connect the truck to the ground. The slope of the unloading platform (upper pig platform) must be less than or equal to 20 degrees, allowing the pigs to go up and down slowly Car, easy to transfer and transport, avoid falling injuries.

Product introduction: Special hydraulic pig loading equipment for large pig farms, duck farms and slaughterhouses, etc.

Applicable occasions: This series of products are mainly used in large-scale pig farms, duck farms and slaughterhouses, etc.

Main use: Special hydraulic pig unloading platform, pig loading platform and pig bridge for pig farms, special duck unloading platform for duck farms, using this equipment for hydraulic lifting, loading and unloading trucks are simple and easy to operate.

Power selection: AC 220V (standard configuration), AC 380V power supply, DC power supply, manual pump

限高架



限高架大体分两种：固定限高架和可调节高度限高架；固定限高架又分为固定一体限高架和固定撞不坏限高架。

固定一体限高架为一次性不可调节高度限高架，靠架子本身拦截车辆，固定式撞不坏限高架在紧急情况下要达到车辆通行必须依靠外力抬起，比如吊车等；

固定一体限高架主要用于桥梁、涵洞、隧道入口处的门型构架，一般为钢结构焊接而成，起防护桥梁、涵洞、隧道的作用；上有标志牌，标有限高米数，用于提示车辆。

可调节高度限高架分为手动限高架、电动限高架两种；手动限高架通过手动装置在需要时可手动抬起限高杆；电动限高架又分为电动限高架、电动液压限高架、气动限高架等。

There are two types of height-limiting racks: fixed height-limiting racks and adjustable height-limiting racks; fixed height-limiting racks are divided into fixed integral height-limiting racks and fixed crash-proof height-limiting racks.

The fixed integrated height-limiting height is a one-time non-adjustable height-limiting height, which intercepts the vehicle by the shelf itself. The fixed crash-resistant height-limiting height must rely on external force to lift the vehicle in an emergency, such as a crane;

The fixed integrated height-restricted overhead frame is mainly used for the portal frame at the entrance of bridges, culverts and tunnels. It is generally welded by steel structure and plays the role of protecting bridges, culverts and tunnels. There is a sign board with a limited height meter for Prompt the vehicle.

Adjustable height limiter is divided into manual height limiter and electric height limiter; manual height limiter can manually raise the height limiter when needed by manual device; electric height limiter is divided into electric height limiter, electrohydraulic height limiter, pneumatic Elevated limit, etc.

家用升降平台



家用升降平台是指安装在私人住宅中，仅供单一家庭成员使用的电梯。它也可以安装在非单一家庭使用的建筑物内，作为单一家庭进入其住所的工具，但是建筑物内的公众或其他居住者无法进入和使用。家用电梯额定速度不超过0.4m/s，对于无轿门的家用电梯额定速度不超过0.3m/s,轿厢行程不超过12m，额定载重量不大于400KG。主要分为曳引电梯，螺杆电梯，液压电梯几种结构。

Household lifting platform refers to an elevator installed in a private residence and only used by a single family member. It can also be installed in a building that is not used by a single family as a tool for a single family to enter its residence, but the public or other residents in the building cannot enter and use it. The rated speed of home elevators does not exceed 0.4m/s, the rated speed of home elevators without car doors does not exceed 0.3m/s, the car travel does not exceed 12m, and the rated load capacity does not exceed 400KG. It is mainly divided into traction elevator, screw elevator and hydraulic elevator.

无障碍升降作业平台



无障碍升降作业平台由升降平台、导轨和驱动箱等三大部分组成；升降平台是由C型钢材为主体部件，采用“翘板自复位开关操作运行”，无基坑式安装,直接固定于混凝土地面（无底坑室外应用情况下,平台下方混凝土地面不得低于周围地面），手动液压阀打开时升降底板能手动下降；液压驱动，升降平稳安全，外部采用拉丝不锈钢材料和铝板静电喷塑机箱/面板，外形小巧美观，不阻碍周边环境。残疾人升降机直接安装于地面，无需土建配套地坑，施工简便，产品放置户外不易积水，不易生锈，维护简便。升降高度1-6米！

The barrier-free lifting platform is composed of three parts: a lifting platform, a guide rail and a drive box; the lifting platform is made of C-shaped steel as the main part, adopts "rocker self-reset switch operation", no foundation pit installation, and directly fixed to Concrete ground (in outdoor applications without a pit, the concrete ground below the platform must not be lower than the surrounding ground), the lifting bottom plate can be manually lowered when the manual hydraulic valve is opened; hydraulically driven, the lifting is stable and safe, and the exterior is made of brushed stainless steel and aluminum plate electrostatic spraying The chassis/panel is small and beautiful, and does not hinder the surrounding environment. The handicapped lift is directly installed on the ground without supporting pits for civil construction. The construction is simple. The product is not easy to accumulate water and rust when placed outdoors, and is easy to maintain. Lifting height of 1 - 6 meters!

曲臂式升降作业平台



型号 Model	GKT-8	GKT-10.5	GKT-12.5	GKT-14
最大作业高度 Maximum operating height	9.7	12	14	16
最大作业半径 Maximum operating radius	2.5	2.5	3.8	4.1
旋转角度 Angle of rotation	360°	360°	360°	360°
平台载荷 Platform load	180	180	180	180
外形尺寸 Dimensions	4.1 × 1.7 × 3.0	4.1 × 1.8 × 3.0	4.8 × 2.1 × 3.05	5.1 × 2.2 × 3.25
整机重量 Weight	1600	1600	1700	1900
升降速度 Lifting speed	0.04-0.07	0.04-0.07	0.05-0.09	0.05-0.09
工作压力 Working pressure	8	8	10	10
行走速度 Walking speed	15-20	15-20	15-30	15-30
抗风能力 Wind resistant ability	5 level	5 level	5 level	5 level

本产品具有操作简单、使用方便、作业半径大、能360°自由旋转等特点，特别是能够悬伸作业，跨越一定的障碍物或在一处升降，并可进行大范围多点作业，极大的提高了工作效率。折臂式液压升降平台广泛应用于市政、电力、公路、车站码头、园林、小区、厂矿企业，用于修理路灯、修剪园林、更换车间顶部照明灯、高空清洁等单人高空作业的。

This product has the advantages of simple operation and convenient use, operating radius, 360o free rotation characteristics, especially to overhang homework, across some barrier or in a lift, and a wide range of production process, greatly improves the work efficiency. Folding arm type hydraulic lifting platform is widely used in municipal, electricity, roads, docks, stations, landscaping, residential, industrial and mining enterprises, for repair lights, manicured gardens, replacement shop lights at the top, high altitude cleaning a single high - altitude operations.



液压支腿



操纵台



橡胶轮胎



电磁换向阀

车载曲臂式升降作业平台



型号 Model	SJZC-8	SJZC-10	SJZC-12	SJZC-14
最大作业高度(m) Maximum operating height	8	10	12	14
最大作业半径(m) Maximum operating radius	3	3.4	3.4	4
旋转角度 ° Angle of rotation	360	360	360	360
平台载荷(kg) Platform load	150	150	150	150
外形尺寸(m) Dimensions	根据车型定According to the model set	根据车型定According to the model set	根据车型定According to the model set	根据车型定According to the model set
整机重量(kg) Weight	根据车型定According to the model set	根据车型定According to the model set	根据车型定According to the model set	根据车型定According to the model set
抗风力 Anti wind	5级	5级	5级	5级

本产品利用汽车引擎动力驱动升降机。具有曲臂式液压升降平台的全部优点，而且车辆的行走功能，使作业车有更好的灵活性和机动性，高空作业效率更高，能适应区域范围广、流动性大的高空作业。广泛应用于电力、市政、园林、工矿企业、通信等行业。

This product uses a car engine to drive a lift. It has all the advantages of the crank arm type hydraulic lifting platform and walking function of vehicle, car operation has better flexibility and mobility, high-altitude operations more efficient, can adapt to the regional wide range and mobility of high - altitude operations. Widely used in electric power, municipal, garden, industrial and mining enterprises, communications and other industries.

车载式升降作业平台



车载式升降作业平台是采用各种车底盘加固平台底架，利用本车动力，在变速箱上输出驱力油泵来操作的，无需外接电源，操作灵活简单、移动方便、机动性强、工作范围大。客户可根据需求选用解放、东风、江铃、福田、电瓶车等任意车型，设备可采用汽车、柴油机或电瓶的直接动力升降。该系列升降平台广泛用于市政建设维护、路灯照明、公路设施维护、工程抢修、园林修剪等行业。

Car-carrying lift platform is the various car chassis strengthening chassis platform, using the engine, the gearbox output drive pump to operate, no need of an external power supply, flexible and simple to operate, easy to move, maneuverability is strong, the scope of work. Customers can choose according to the requirements of the liberation, Dongfeng, Jiang Ling, Fukuda, battery car and other models, the device can use a car, diesel engine or battery power directly. The series of lifting platform is widely used in the construction of municipal construction, street lighting, highway maintenance, engineering repair, garden pruning and other industries.

电瓶车载式升降作业平台



电瓶车载式升降作业平台采用电瓶车作为行走动力，移动方便，能满足不同作业高度升降要求。它具有载重量大、升降平稳、操作简单等特点，广泛应用于工矿企业、市政、园林修剪、电力检修、仓库等作业范围大移动频繁的工作场所。

The battery vehicle - mounted lifting platform uses a battery cart as the driving power, which is convenient to move and can meet the lifting requirements of different operating heights. It has the characteristics of large load capacity, stable lifting, and simple operation. It is widely used in industrial and mining enterprises, municipal administration, garden pruning, power maintenance, warehouses and other workplaces with large operating ranges and frequent movements.

传菜机



传菜机一般可以分成两种，一种是落地式的，他的尺寸更大，载重更大，有着超速超载的安全功能，且底部与地面持平，可以将餐车直接推入，极为方便。

还有一种是窗口式的，他的优点是占地面积小，最小的占地面积不到1平米，高效，节能，最低仅需要1.1KW即可使用，而且安装方便，更是便于用户对其包封装饰。

传菜机是由杂物电梯演化过来的，他用于宾馆，酒店，饭店，医院，部队，学校等地的厨房内部，多是用来楼上楼下的传送菜盘，且禁止人员入内。

随着时代的发展，传菜机已经成为各大酒店饭店的必需品，他安全可靠，使用寿命长，舒适灵活，节能环保，实在是厨房人员的终身良伴。

Food Dumbwaiter can generally be divided into two, a is a floor type, whose size is bigger, bigger load, overload and overspeed safety features, and the bottom flat on the ground can the dining car direct push, is very convenient.

There is a window, his merit is covers an area of small, the smallest area not 1 square meters, high efficiency, energy saving, the lowest only need 1.1KW can use, and convenient installation, is convenient for the user to the bag sealing decorative.

Food Dumbwaiter is by debris elevator evolved, he used for guesthouses, hotels, restaurants, hospitals, military units, schools and other places inside the kitchen is used to upstairs downstairs transfer dish and personnel are not allowed.

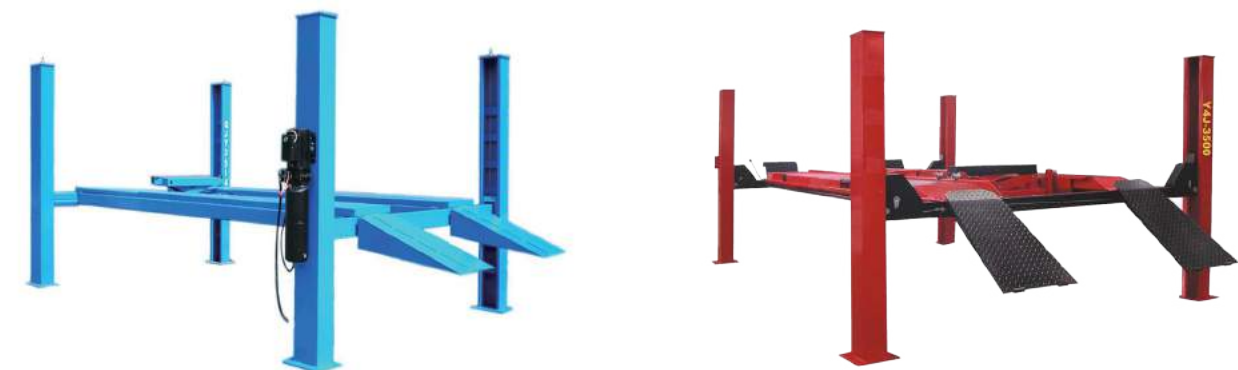
With the development of the times, Food Dumbwaiter has become the necessities of the hotel restaurant, he is safe and reliable using long service life, flexible and comfortable, energy-saving and environmental protection is really a lifelong companion of the kitchen staff.

四柱式汽车举升机



电动解锁，方便操作，Electrical unlock, easy operation；薄型跑道设计，最低高度155mm。Thin course design, minium height 155mm；油缸内置于平台；Cylinder is inside the platform；重型钢丝绳轮或加重专用链条确保安全；Heavy duty steel wire or heavy duty chain to insure the safety；跑道内侧距离可移动以适用不同轮距的车辆也可做平板台面；Courses inner distance can be adjusted to suit for different vehicle；上升过程中的自动保险确保车辆安全；Auto-insuring device to guarantee the vehicle safty when it is lift up；上升过程跑道同步装置保证车辆无倾覆可能；Synchronized device on the courses to insure the vehicle no overturh possibility；下降到地面前的报警设置保证操作人员的安全；Before the courses drop to the ground, the alarm remind the operator For safety；链条或钢丝绳断裂保护装置；ain or steel wire broken protection device；液压系统失压防爆保护装置；Blasting protection device of hydraulic system；24V安全操控电压；24V safe operate voltage；铝壳带风扇电机；Aluminium shelled motor with fan；耐腐蚀钢制油箱或塑料油桶易于观察液压油容量和清洁度；Corrosion-resistance steel oil box or plastic box for the convenience to view the content and cleanness；电气，机械，液压系统按照欧盟安全认证设计制造。Electrical, mechnical and hydraulic system are all manufactured according to European safety standard .

汽修举升机



汽修举升机是指汽车维修行业用于汽车举升的汽保设备。在汽车维修养护中发挥着至关重要的作用，无论整车大修，还是小修保养，都离不开它，其产品性质、质量好坏直接影响维修人员的人身安全。在规模各异的维修养护企业中，无论是维修多种车型的综合类修理厂，还是经营范围单一的街边店（如轮胎店），几乎都配备有汽修举升机。

Auto lifting machine is used for lifting the car steam equipment for automotive repair industry. Play a crucial role in the automobile maintenance, regardless of the vehicle overhaul, repair and maintenance, are inseparable from it, the nature of the product and quality directly affect maintenance personnel's personal safety. In the maintenance enterprises of different scales, whether it is the maintenance of a variety of models of comprehensive repair plant, or operating range of a single shop in the street, such as the tire shop, almost all equipped with auto repair lifting machine.



KINO CRANES CO., LTD.

Leading crane manufacturer, focus on technology development.

KINO CRANES CO., LTD.

✉ info@kino-crane.com

☎ 0086-373-3809944

🌐 www.kino-crane.com

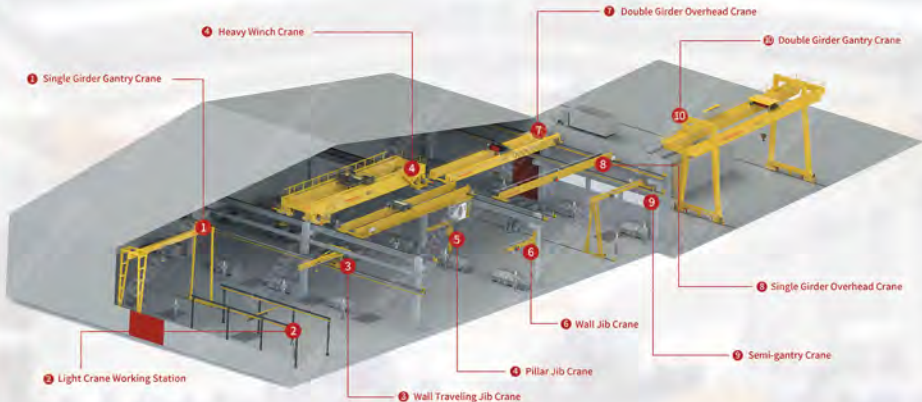
📞 0086-373-3809941

🏢 7th Floor, Xinghai Center, Xinxiang-Henry, China

📍 Weiq Road, Crane Industrial Park, Changyuan County, Henan, China

🌍 USA, Mexico, Singapore, Bangladesh, Pakistan, Malaysia, Kenya, Cyprus





>>> ABOUT KINOCRANES

Kinocranes, is a professional material handling equipment supplier specializing in crane equipment exporting. With 12 years of exporting and service experience, we have successfully expanded our business to 50+ countries and regions worldwide. We are proud to have 3 own brands for different production series and 5 production bases in China.

Kinocranes has established overseas offices in Pakistan, Bangladesh, Malaysia, the US, and branch companies in Mexico and Singapore. Our local service teams are readily available to provide exceptional support and service to our clients.

Our company integrates crane research and development, manufacturing, sales, installation, and service. With more than 1200 employees, including over 180 engineers and technicians, we are dedicated to producing high-quality products. Our factories cover an area of more than 400 acres, with a registered capital of 108.80 million RMB and a total capital of 220 million RMB. Our 210-plus sets of advanced manufacturing and testing equipment enable us to deliver top-notch products.

Benefiting from the globalization advantages of the Kinocranes group company, we collaborate with globally recognized brand suppliers from all over the world to provide the best product components, meeting the customization and high-quality needs of our customers.

Kinocranes follows a strict and optimized quality control procedure. We carefully manage each process from raw materials and components to design and fabrication. Our consistent pursuit is to deliver high-quality and optimized products to our customers.

Company Certificates: ISO 9001:2015, ISO 14001:2015, ISO 45001:2018

Product Certificates: CE, SGS, TUV

We specialize in a wide range of products, including:

Overhead cranes, Gantry cranes, Jib cranes, Electric hoists, Crane trolleys, Magnets, Grabs, Related lifting equipment

Our products are widely used in various industries such as steel, power stations, energy recycling, vehicle manufacturing, general manufacturing, paper making, food industry, petrochemicals, aerospace, and shipbuilding.

We have a professional and thoughtful sales and service team that strives to provide customers with customized products. Our core values include treating customers sincerely, trusting and respecting individuals, relying on teamwork to achieve common goals, and adhering to honesty and integrity in our business activities.

CERTIFICATIONS



ISO9001



ISO14001



ISO45001



Ex-proof



CE



CE



CE



CE



Ex-proof



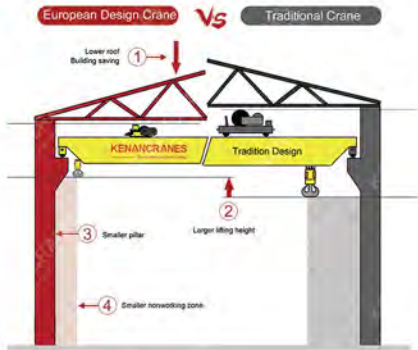
License



Embassy Award



CE



Supreme Performance



Low Noise



Free Maintenance



Smart Monitor



3 in 1 Gear Motor



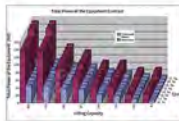
Cost Saving

Crane Duty Classification

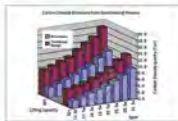
	Duty Class					
ISO 853/EN	M3	M4	M5	M6	M7	M8
GB	A3	A4	A5	A6	A7	A8
FEM	1Bm	1Am	2m	3m	4m	5m
CHAA	A	B	C	D	E	F
HM	H2	H3	H4	H5	H6	H8

	Crane Duty Classification					
SWPH	400	800	1,600	3,200	6,300	12,500
Duty %ED	25	30	40	50	60	60
Starts (sh)	150	180	240	300	380	560
Run Time(h)	3,200	6,200	12,500	25,000	50,000	100,000
Starts	480,000	1,134,000	3,000,000	7,500,000	18,000,000	42,000,000
Overload	1,000	1,000	1,000	1,000	1,000	1,000

Energy&Steel Saving



Power Saving **↓ 58%**



Steel Saving **↓ 45%**

EUROPEAN TYPE WIRE ROPE HOIST

SWL(t)
0.5t-80t

HOL(m)
0m-60m

Work Duty
M3-M6



★ Disc brake, 500,000.00 times working life



★ Safety monitoring system



MAIN FEATURES

- Low headroom
- Smart driving, higher efficiency
- Stepless traveling control
- Hardened gear, low noise design
- IP55/ F or H Insulation
- Heavy duty motor, 60%ED rating
- Overheating, overloading protect
- Electromagnetic disk brake, full sealing
- Maintenance free
- Dual speeds for hoisting



★ Aviation plug, easy connection



★ 3 in 1 gear motor for travelling



★ Hardened gear, free maintenance design



★ 2160N/mm² Heavy duty galvanized wire rope

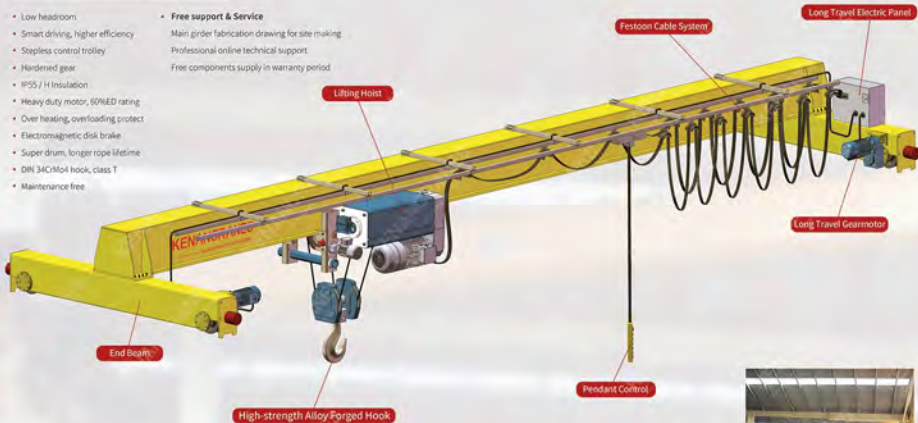
Standard Parameter Scope

SWL(t)	HOL(m)	Work Duty
0.5t - 20t	Max. 90m	M3-M6

- Low headroom
- Smart driving, higher efficiency
- Stepless control trolley
- Hardened gear
- IP55 / H Insulation
- Heavy duty motor, 60%ED rating
- Over heating, overloading protect
- Electromagnetic disk brake
- Super drum, longer rope lifetime
- DIN 34CrMo4 hook, class T
- Maintenance free

Free support & Service

- Main girder fabrication drawing for site making
- Professional online technical support
- Free components supply in warranty period



Standard Parameter Scope

SWL(t)	HOL(m)	Work Duty
0.5t - 80t	Max. 90m	M3-M6

- Low heightroom
 - Smart driving, higher efficiency
 - Stepless control trolley
 - Hardened gear
 - IP55 / H Insulation
 - Heavy duty motor, 60%ED rating
 - Over heating, overloading protect
 - Electromagnetic disk brake
 - Maintenance free
 - DIN 34C/Mo4 hook, class T
 - Reliable rope guider
 - 2160H/mm² Heavy duty galvanized wire rope
- **Free support & Service**
 - Main girder fabrication drawing for site making
 - Professional online technical support
 - Free components supply in warranty period
 - Safety monitoring system, with LCD
 - Trolley and gearmotor anti-drop protect
 - Rotation lifting limit switch, 4 steps adjustable





SWL(t)	Span(m)	HOL(m)	Class
1t-20t	5m-35m	3m-40m	M4-M6

■ MAIN FEATURES

- Stepless control
- Hardened gear
- Motor protection class IP55
- Heavy duty motor, 60%ED rating
- Electromagnetic disk brake, dust proof
- No oil leakage, self-adjustable brake
- Heavy duty galvanized wire rope
- Reliability design
- Smaller size, lighter wheel load
- Control mode: pendant/remote/cabin
- Maintenance free



HEAVY DUTY OPEN WINCH TROLLEY

SWL(t)
5t-500t

HOL(m)
Max.160m

Work Duty
M3-M8



★ High grade steel wire rope



★ Stepless speed control



★ European wheel 42CrMo



★ Hardened gear reducer



★ Heavy duty motor



★ Heavy duty plug set, IP55 protection, easy connection

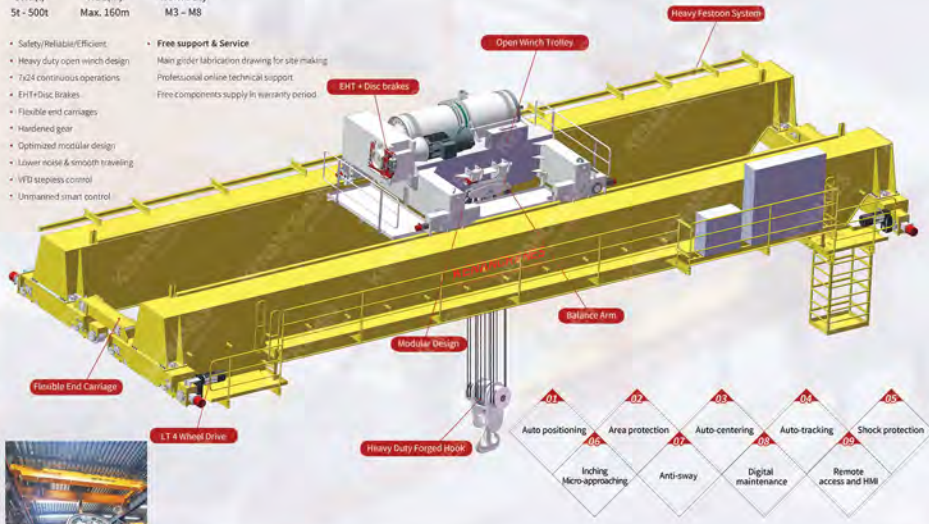


Standard Parameter Scope

SWL(t)	HOL(m)	Work Duty
5t - 500t	Max. 160m	M3 - M8

- Safety/Reliable/Efficient
- Heavy duty open winch design
- 7x24 continuous operations
- EHT+Disc Brakes
- Flexible end carriages
- Hardened gear
- Optimized modular design
- Lower noise & smooth traveling
- VFD stepless control
- Unparalleled smart control

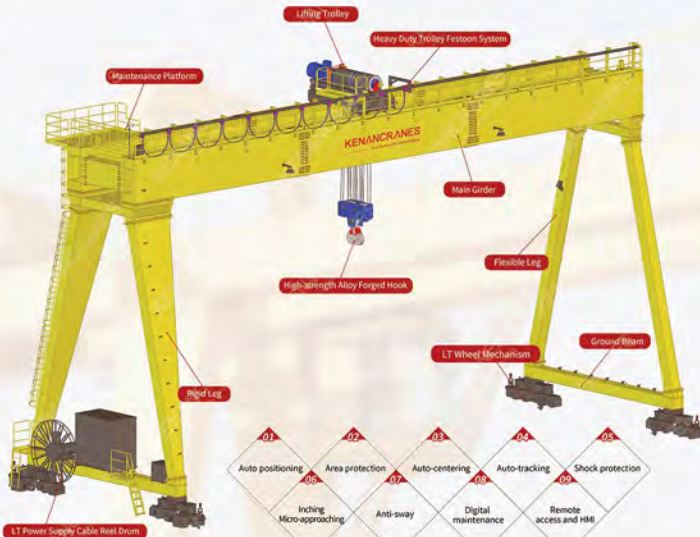
- **Free support & Service**
Main girder fabrication drawing for site making
Professional online technical support
Free components supply in warranty period

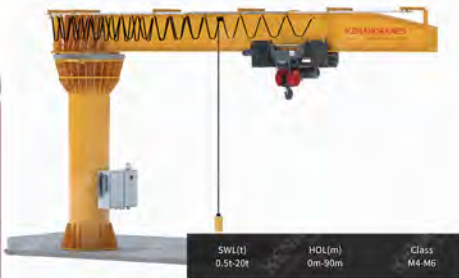


Standard Parameter Scope

SWL(t)	HOL(m)	Work Duty
5t-500t	3m-60m	M3-M8

- Saving building cost and energy saving
- Heavy duty processing
- Smart driving, higher efficiency
- Stepless control
- Hardened gear
- IP55 / H Insulation
- Heavy duty motor, 60%ED rating
- Over heating, overloading protect
- Maintenance free
- **Free support & Service**
 - Main girder fabrication drawing for site making
 - Professional online technical support
 - Free components supply in warranty period





MAIN FEATURES



- Stepless control
- Hardened gear
- Protection class IP55
- Heavy duty motor, 60%ED rating
- Electromagnetic disk brake,dust proof
- No oil leakage,self-adjustable brake
- Heavy duty galvanized wire rope
- Reliability designing
- Small size,lighter wheel load



MAIN FEATURES



- Stepless control
- Hardened gear
- Protection class IP55
- Heavy duty motor, 60%ED rating
- Electromagnetic disk brake,dust proof
- No oil leakage,self-adjustable brake
- Heavy duty galvanized wire rope
- Reliability designing
- Smaller size,lighter wheel load

Integrated End Carriage

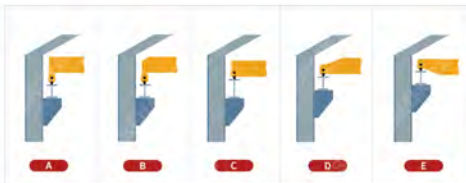


■ MAIN FEATURES

Integrated end carriage

Reduce wheel pressure

Modular end carriage, direct driving



Module joint designing, Fitting with smallest building clearance



Heavy load wheel block
Central lubrication



Adjustable vertical inclination and
horizontal divergence



Spline shaft, direct driving



Roller guider for travelling



Spray treatment, abrasion
proof, anti-corrosion



Casting wheel DIN GGG70

Control System



Crane panel

IEC standard

The control panels are finished to anti-corrosion, IP55

Multiple functions customized



Intelligent safety monitoring system

Real time monitoring over 30 safety items

Hoist safe working period counter (SWPC)

Lifting running time counter

Overloading counter

Motor starts counter

Overheating protection

Overload protection

Ethernet/4G remote access

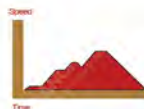
Brake-wear supervision



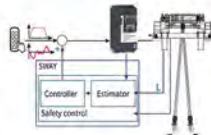
Inverter

Smoothly starting, moving, stop, less of hook swaying

Higher transmission efficiency, lower power



E Anti-sway system/HMI/Remote access via ethernet



Limit switch

4 fully adjustable switching points

Phase fault protection

Lower, slow-down, upper, top



Remote control

Protection class IP65



Trolley festoon

Reliable power supply, long service life



Cabin control

Aviation design, large sight view





IP55 60%ED /H Insulation

IP55 60%ED /H Insulation

Motor + brake + gearbox three integrated design, rational use of space, compact structure

FEATURES

- Stepless travelling
- Squirrel-Cage, asynchronous speed 3000 rpm
- Heavy duty 60% ED rating, IP55/H insulation
- Electromagnetic disc brake
- Totally enclosed compact gearbox
- Silent running with hardened gear wheels
- Semi-fluid grease lubrication for service life

Disc Brake



Travelling Motor



Hardened Gearbox



3 in 1 Gearmotor



Lifting motor

- Asynchronous motors synchronous
- Speed 3000/ 500rpm (50Hz)
- Heavy duty 60% ED rating
- Over heating /IP55 /H insulation
- Optimum cooling / Cut off (170°C)



Lifting gearbox

- Silent running
- Hardened gear
- Optimized transmission, higher efficiency
- Totally enclosed, compact
- Semi-fluid grease, service life



Lifting brake

- Electromagnetic disc brake
- DC power supply
- No adjusting for brake lining
- Dust proof
- Heavy duty
- 500,000.00 Times working life



Hook

- DIN standard forging hook optimized size
- Small in size
- High strength
- More effective lifting height



Chain type rope guide

- Nylon material, higher ductility, longer guider life
- Fitting with drum range
- Even no wearing, longer drum and rope life
- Easier assembling



High grade steel wire rope

- High stress 2160 N/mm²
- Galvanized, maintenance free
- Plane contacting wire, wearable



Installation Site



Auxiliary Equipment



Portable Gantry Crane



Aluminum Gantry Crane



Free Standing Bridge Crane



Aluminum Free Standing Bridge Crane

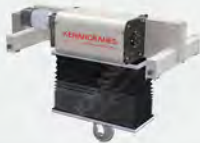


Self-propelled Scissors Lift



Aluminum Alloy Lifting Platform

• Dust-Proof Hoist



• Explosion-Proof Hoist



• Metallurgical Hoist



Auxiliary Equipment



• Round Magnet



• Rotating Magnet Spreader



• Telescopic Electromagnetic Spreader



• Mechanical Grab



• Hydraulic Grab



• C-Type Hook



• Coil Lifting Tong



• Billets Handling Clamp



• Coil Lifter



• Ladle Hook



• Coil Transfer Cart

Auxiliary Equipment

Lareina

+86 18678715331
vote15@china-vote.com

JINING VOTE MACHINERY TECHNOLOGY CO., LTD.

Address: Nanzhang Industrial Park, Nanzhang Sub-district, Rencheng District, Jining, Shandong, China



沃特叉车 / 承载重托
VOTE FORKLIFT BEARING GREAT TRUST

济宁沃特机械科技有限公司
JINING VOTE MACHINERY TECHNOLOGY CO., LTD.

MAIN PARAMETERS

VTCD-15

1. The engine configuration is richer and more powerful.

2. The braking system is fully upgraded.

3. Energy-saving applications are more efficient

4. Crafted more superior



Model			VTCD-15
Power			Diesel
Rated lifting load		KG	1500
Load center distance		mm	500
Driving mode			Seat driving
Length	With fork	mm	3180
	Without fork		2260
Width		mm	1090
Height	Height when the mast not raised	mm	1990
	Overhead guard height		2050
Wheelbase		mm	1400
Front overhang			410
Rear overhang		mm	425
Minimum ground clearance			110
No-load maximum lifting height		mm	3000
Free lifting height			100
Minimum turning radius (outer side)		mm	1950

Model		VTCD-15
No-load maximum lifting speed	mm/s	500
Full-load maximum lifting speed		480
No-load maximum working speed	Km/h	14
Full-load maximum working speed		15
Full-load maximum gradeability	%	20
Forklift weight under standard no-load condition	Kg	2900
Tire no. (F/R)		2/2
Tire type (F/R)		Air inflation tire
Tire size (F)		6.5-10-10PR
Tire size (R)		5.00-8-10PR
Brake/service brake		Power brake-pedal
Parking brake		Machenical-manual
Battery voltage/capacity	V/Ah	12/80
Engine model		Quanchai/Xinchai
Engine fuel tank capacity	L	40
Mast tilt angle (front/rear)	(°)	6°/12°

MAIN PARAMETERS

VTCD-20

1. The engine configuration is richer and more powerful.

2. The braking system is fully upgraded.

3. Energy-saving applications are more efficient

4. Crafted more superior



Model			VTCD-20
Power			Diesel
Rated lifting load		KG	2000
Load center distance		mm	500
Driving mode			Seat driving
Length	With fork	mm	3422
	Without fork		2502
Width		mm	1170
Height	Height when the mast not raised	mm	2100
	Overhead guard height		2070
Wheelbase		mm	1600
Front overhang			460
Rear overhang		mm	410
Minimum ground clearance			110
No-load maximum lifting height		mm	3000
Free lifting height			150
Minimum turning radius (outer side)		mm	2300
Mast tilt angle (front/rear)		(°)	6°/12°

Model		VTCD-20
No-load maximum lifting speed	mm/s	530
Full-load maximum lifting speed		500
No-load maximum working speed	Km/h	20
Full-load maximum working speed		18
Full-load maximum gradeability	%	20
Forklift weight under standard no-load condition	Kg	3400
Tire no. (F/R)		2/2
Tire type (F/R)		Air inflation tire
Tire size (F)		7.00x12-12PR
Tire size (R)		6.00x9-10PR
Brake/service brake		Power brake-pedal
Parking brake		Machanical-manual
Battery voltage/capacity	V/Ah	12/80
Engine model		Quanchai/Xinchai
Engine fuel tank capacity	L	50
Transmission box		Hydraulic shift
Number of gear lever		1

MAIN PARAMETERS

VTCD-25

- 1. The engine configuration is richer and more powerful.
- 2. The braking system is fully upgraded.
- 3. Energy-saving applications are more efficient
- 4. Crafted more superior



Model			VTCD-25
Power			Diesel
Rated lifting load		KG	2500
Load center distance		mm	500
Driving mode			Seat driving
Length	With fork	mm	3650
	Without fork		2580
Width		mm	1170
Height	Height when the mast not raised	mm	2070
	Overhead guard height		2070
Wheelbase		mm	1600
Front overhang			477
Rear overhang		mm	494
Minimum ground clearance			110
No-load maximum lifting height		mm	3000
Free lifting height			160
Minimum turning radius (outer side)		mm	2240

Model		VTCD-25
No-load maximum lifting speed	mm/s	530
Full-load maximum lifting speed		500
No-load maximum working speed	Km/h	19
Full-load maximum working speed		17
Full-load maximum gradeability	%	20
Forklift weight under standard no-load condition	Kg	3700
Tire no. (F/R)		2/2
Tire type (F/R)		Air inflation tire
Tire size (F)		7.00x12,12PR
Tire size (R)		6.00x9,10PR
Brake/service brake		Power brake-pedal
Parking brake		Machanical-manual
Battery voltage/capacity	V/Ah	12/80
Engine model		Quanchai/Xinchai
Engine fuel tank capacity	L	50
Mast tilt angle (front/rear)	(°)	6°/12°

MAIN PARAMETERS

VTCD-30

- 1. The engine configuration is richer and more powerful.
- 2. The braking system is fully upgraded.
- 3. Energy-saving applications are more efficient
- 4. Crafted more superior



Model			VTCD-30	Model		VTCD-30
Power			Diesel	No-load maximum lifting speed	mm/s	505
Rated lifting load		KG	3000	Full-load maximum lifting speed		485
Load center distance		mm	500	No-load maximum working speed	Km/h	20
Driving mode			Seat driving	Full-load maximum working speed		18
Length	With fork	mm	3750	Full-load maximum gradeability	%	20
	Without fork		2682	Forklift weight under standard no-load condition	Kg	4250
Width		mm	1225	Tire no. (F/R)		2/2
Height	Height when the mast not raised	mm	2130	Tire type (F/R)		Air inflation tire
	Overhead guard height		2090	Tire size (F)		28*9-15-14PR
Wheelbase		mm	1700	Tire size (R)		6.5-10-10PR
Front overhang			479	Brake/service brake		Power brake-pedal
Rear overhang		mm	520	Parking brake		Machenical-manual
Minimum ground clearance			110	Battery voltage/capacity	V/Ah	12/80
No-load maximum lifting height		mm	3000	Engine model		Quanchai/Xinchai
Free lifting height			160	Engine fuel tank capacity	L	60
Minimum turning radius (outer side)		mm	2400	Mast tilt angle (front/rear)	(°)	6°/12°

MAIN PARAMETERS

VTCD-35

1. The engine configuration is richer and more powerful.
2. The braking system is fully upgraded.
3. Energy-saving applications are more efficient
4. Crafted more superior



Model			VTCD-35
Power			Diesel
Rated lifting load		KG	3500
Load center distance		mm	500
Driving mode			Seat driving
Length	With fork	mm	3763
	Without fork		2693
Width		mm	1225
Height	Height when the mast not raised	mm	2130
	Overhead guard height		2090
Wheelbase		mm	1700
Front overhang			479
Rear overhang		mm	520
Minimum ground clearance			110
No-load maximum lifting height		mm	Two levels 4000
Free lifting height			160
Minimum turning radius (outer side)		mm	2420

Model		VTCD-35
No-load maximum lifting speed	mm/s	505
Full-load maximum lifting speed		485
No-load maximum working speed	Km/h	20
Full-load maximum working speed		18
Full-load maximum gradeability	%	20
Forklift weight under standard no-load condition	Kg	4500
Tire no. (F/R)		2/2
Tire type (F/R)		Air inflation tire
Tire size (F)		28*9-15-14PR
Tire size (R)		6.5-10-10PR
Brake/service brake		Power brake-pedal
Parking brake		Machenical-manual
Battery voltage/capacity	V/Ah	12/80
Engine model		Quanchai/Xinchai
Engine fuel tank capacity	L	60
Mast tilt angle (front/rear)	(°)	6°/12°

MAIN PARAMETERS

VTCD-40

1. The engine configuration is richer and more powerful.
2. The braking system is fully upgraded.
3. Energy-saving applications are more efficient
4. Crafted more superior



Model			VTCD-40
Power			Diesel
Rated lifting load		KG	4000
Load center distance		mm	500
Driving mode			Seat driving
Length	With fork	mm	4000
	Without fork		2930
Width		mm	1290
Height	Height when the mast not raised	mm	2130
	Overhead guard height		2180
Wheelbase		mm	1900
Front overhang			560
Rear overhang		mm	550
Minimum ground clearance			140
No-load maximum lifting height		mm	3000
Free lifting height			150
Minimum turning radius (outer side)		mm	4750

Model		VTCD-40
No-load maximum lifting speed	mm/s	420
Full-load maximum lifting speed		380
No-load maximum working speed	Km/h	22
Full-load maximum working speed		22
Full-load maximum gradeability	%	20
Forklift weight under standard no-load condition	Kg	4950
Tire no. (F/R)		2/2
Tire type (F/R)		Air inflation tire
Tire size (F)		250-15
Tire size (R)		650-10
Brake/service brake		Power brake-pedal
Parking brake		Machenical-manual
Battery voltage/capacity	V/Ah	1-12/80A
Engine model		Quanchai 4C2-50C43
Engine fuel tank capacity	L	55
Mast tilt angle (front/rear)	(°)	6°/12°

MAIN PARAMETERS

VTCD-50

- 1. The engine configuration is richer and more powerful.
- 2. The braking system is fully upgraded.
- 3. Energy-saving applications are more efficient
- 4. Crafted more superior



Model			VTCD-50
Power			Diesel
Rated lifting load		KG	5000
Load center distance		mm	500
Driving mode			Seat driving
Length	With fork	mm	4190
	Without fork		3120
Width		mm	1480
Height	Height when the mast not raised	mm	2390
	Overhead guard height		2240
Wheelbase		mm	2000
Front overhang			570
Mast tilt angle (front/rear)		(°)	6°/12°
Minimum ground clearance		mm	175
No-load maximum lifting height		mm	3000
Free lifting height			150
Minimum turning radius (outer side)		mm	2900

Model		VTCD-50
No-load maximum lifting speed	mm/s	400
Full-load maximum lifting speed		380
No-load maximum working speed	Km/h	8/19
Full-load maximum working speed		7/18
Full-load maximum gradeability	%	15
Forklift weight under standard no-load condition	Kg	6700
Tire no. (F/R)		2/2
Tire type (F/R)		Air inflation tire
Tire size (F)		300-15
Tire size (R)		7.00-12
Brake/service brake		Power brake-pedal
Parking brake		Machenical-manual
Battery voltage/capacity	V/Ah	2-12/80
Engine model		Quanchai 4C6-85U32
Engine fuel tank capacity	L	100
Nominal power	KW	62.5

MAIN PARAMETERS

VTCD-70

- 1. The engine configuration is richer and more powerful.
- 2. The braking system is fully upgraded.
- 3. Energy-saving applications are more efficient
- 4. Crafted more superior



Model			VTCD-70
Power			Diesel
Rated lifting load		KG	7000
Load center distance		mm	600
Driving mode			Seat driving
Length	With fork	mm	4780
	Without fork		3600
Width		mm	1970
Height	Height when the mast not raised	mm	2450
	Overhead guard height		2500
Wheelbase		mm	2250
Front overhang			600
Rear overhang		mm	720
Minimum ground clearance			230
No-load maximum lifting height		mm	3000
Free lifting height			210
Minimum turning radius (outer side)		mm	4150

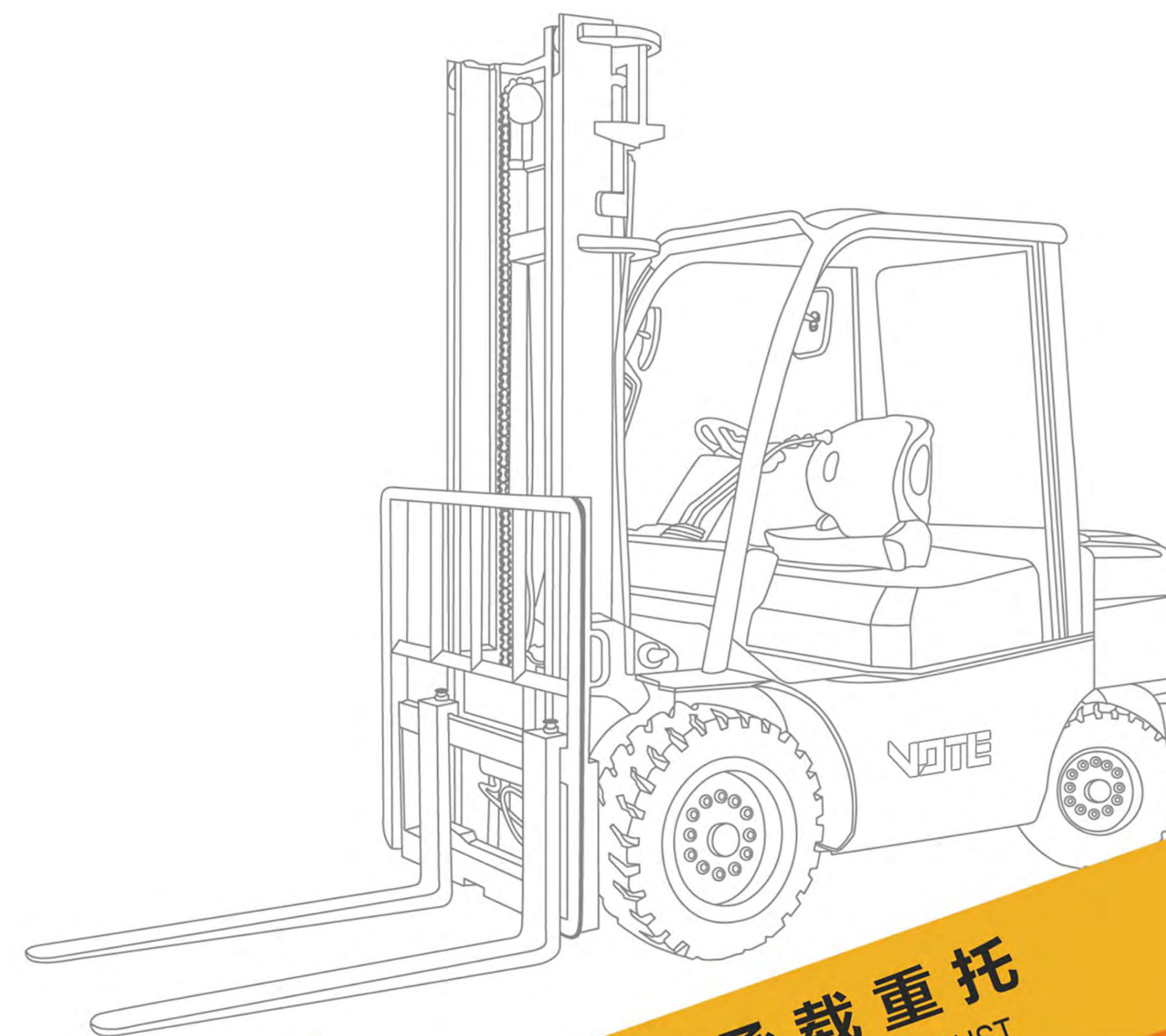
Model		VTCD-70
No-load maximum lifting speed	mm/s	530
Full-load maximum lifting speed		500
No-load maximum working speed	Km/h	29
Full-load maximum working speed		24
Full-load maximum gradeability	%	15
Forklift weight under standard no-load condition	Kg	9600
Tire no. (F/R)		4/2
Tire type (F/R)		Air inflation tire
Tire size (F)		8.25-15NHS
Tire size (R)		8.25-15NHS
Brake/service brake		Power brake-pedal
Parking brake		Machenical-manual
Battery voltage/capacity	V/Ah	2-12/80
Engine model		Xichai CA6110
Engine fuel tank capacity	L	160
Mast tilt angle (front/rear)	(°)	6°/12°

Lareina

+86 18678715331
vote15@china-vote.com

JINING VOTE MACHINERY TECHNOLOGY CO., LTD.

Address: Nanzhang Industrial Park, Nanzhang Sub-district, Rencheng District, Jining, Shandong, China



沃特叉车 / 承载重托
VOTE FORKLIFT BEARING GREAT TRUST

济宁沃特机械科技有限公司
JINING VOTE MACHINERY TECHNOLOGY CO., LTD.



特性 Characteristics				
型号	Model			VTDD-10
驾驶方式	driving mode			座驾式 seated
额定起重量	rated capacity	Q	kg	1000
载荷中心距	load center distance	C	mm	500
动力方式	power mode			铅酸蓄电池 lead-acid battery
轴距	wheelbase	L1	mm	1330
性能 Performance				
行驶速度, 满/空载	travel speed, laden/unladen		km/h	10/11
起升速度, 满/空载	lifting speed, laden/unladen		mm/s	220/230
下降速度, 满/空载	lowering speed, laden/unladen		mm/s	550
最大爬坡度, 满/空载	maximum negoniable gradient, laden/unladen		%	15/20
重量 Weight				
自重 (包含蓄电池)	service mass(with battery)		kg	1530
桥负荷: 空载, 前/后	axle load:unloaded, front/rear		kg	
桥负荷: 满载, 前/后	axle load:loaded, front/rear		kg	
蓄电池电压/容量	battery voltage /nominal capacity		V/Ah	60V/120Ah
蓄电池	battery weight		kg	150
电气配置 Electrical configuration				
驱动电机功率-60分钟	drive motor power-60 minutes		kW	5kw permanent magnet synchronization
起升电机功率-15分钟	lift motor power-15 minutes		kW	4.5kw permanent magnet synchronization
驱动电机控制方式	drive motor controlling mode			MOSFET/PMSM
起升电机控制方式	lifting motor controlling mode			MOSFET/PMSM
行车制动/停车制动	service brake/parking brake			Hydraulic/Mechanial
轮胎 Tyre				
轮胎类型	tyre type			Solid tire
车轮数量 (前/后)	wheels number (front/rear)			2/2
前轮距	front track	W3	mm	910
后轮距	rear track	W2	mm	865
轮胎, 前	tyre(front)			15*4 1/2-8
轮胎, 后	tyre(rear)			15*4 1/2-8
尺寸 Size				
前悬距	front overhang	L2	mm	308
门架倾角, 前/后	tilt of the mast, front/rear	α / β	°	5/10
门架缩回时高度	height, mast retraction	H1	mm	2017
自由起升高度	free lift height	H3	mm	/
最大起升高度	overall maximum lift height	H	mm	3000
门架伸出时高度	height, mast extended	H2	mm	3957
护顶架高度	overhead guard height	H4	mm	1847
货叉调节范围 (外侧) 最大、最小	lateral Fork Adjustment (Outside of Forks) Max/Min	W5	mm	970/200
货叉尺寸 厚x宽x长	fork size (LxWxT)	T*W*L4	mm	32*100*1070
车体长度 (不含货叉)	truck body length (fork excluded)	L '	mm	1980
车体宽度	truck body width	W1	mm	1020
转弯半径	turning radius	R	mm	2050
门架离地间隙	groubd clearance under mast	H5	mm	77
轴距中心离地间隙 (满载)		H6	mm	100
Ground clearance at center of wheelbase (laden)				
直角堆垛通道宽度 (托盘1000x1200mm, 1000沿货叉)	width of aisle right-angle stacking (pallet1000x1000mm clearance 200mm)	Ast	mm	3400
直角堆垛通道宽度 (托盘800x1200mm, 1200沿货叉)	width of aisle right-angle stacking (pallet1200x1200mm clearance 200mm)	Ast	mm	3650
*本公司保留更改产品设计和规格的权利, 恕不另行通知。				

VTDD-10

1 tons of electric forklifts

- > Low -level pedal on the car, equipped with a safety handrail.
- > Smart instrument, electricity, use time, and fault code are visually displayed and operated.
- > The steering wheel can be adjusted, watching the wild door rack wide.



VTDD-10 Product Details Display





特性 Characteristics				
型号	Model			VTDD-15
驾驶方式	driving mode			座驾式 seated
额定起重量	rated capacity	Q	kg	1500
载荷中心距	load center distance	C	mm	500
动力方式	power mode			铅酸蓄电池 lead-acid battery
轴距	wheelbase	L1	mm	1550
性能 Performance				
行驶速度, 满/空载	travel speed, laden/unladen		km/h	9/9.5
起升速度, 满/空载	lifting speed, laden/unladen		mm/s	200/220
下降速度, 满/空载	lowering speed, laden/unladen		mm/s	550
最大爬坡度, 满/空载	maximum negotiable gradient, laden/unladen		%	15/20
重量 Weight				
自重 (包含蓄电池)	service mass(with battery)		kg	2150
桥负荷: 空载, 前/后	axle load:unloaded, front/rear		kg	
桥负荷: 满载, 前/后	axle load:loaded, front/rear		kg	
蓄电池电压/容量	battery voltage /nominal capacity		V/Ah	60V/140Ah
蓄电池	battery weight		kg	165
电气配置 Electrical configuration				
驱动电机功率-60分钟	drive motor power-60 minutes		kW	5kw permanent magnet synchronization
起升电机功率-15分钟	lift motor power-15 minutes		kW	4.5kw permanent magnet synchronization
驱动电机控制方式	drive motor controlling mode			MOSFET/PMSM
起升电机控制方式	lifting motor controlling mode			MOSFET/PMSM
行车制动/停车制动	service brake/parking brake			Hydraulic/Mechanical
轮胎 Tyre				
轮胎类型	tyre type			Solid tire
车轮数量 (前/后)	wheels number(front/rear)			2/2
前轮距	front track	W3	mm	945
后轮距	rear track	W2	mm	880
轮胎, 前	tyre(front)			18*7-10
轮胎, 后	tyre(rear)			15*4 1/2-8
尺寸 Size				
前悬距	front overhang	L2	mm	325
门架倾角, 前/后	tilt of the mast, front/rear	α / β	°	5/10
门架缩回时高度	height, mast retraction	H1	mm	2030
自由起升高度	free lift height	H3	mm	/
最大起升高度	overall maximum lift height	H	mm	3000
门架伸出时高度	height, mast extended	H2	mm	4055
护顶架高度	overhead guard height	H4	mm	2110
货叉调节范围 (外侧) 最大、最小	lateral Fork Adjustment (Outside of Forks) Max/Min	W5	mm	970/200
货叉尺寸 厚x宽x长	fork size (LxWxT)	T*W*L4	mm	35*100*1070
车体长度 (不含货叉)	truck body length(fork excluded)	L '	mm	2230
车体宽度	truck body width	W1	mm	1096
转弯半径	turning radius	R	mm	2200
门架离地间隙	groubd clearance under mast	H5	mm	88
轴距中心离地间隙 (满载)		H6	mm	110
Ground clearance at center of wheelbase(laden)				
直角堆垛通道宽度 (托盘1000x1200mm, 1000沿货叉)	width of aisle right-angle stacking (pallet1000x1000mm clearance 200mm)	Ast	mm	3750
直角堆垛通道宽度 (托盘800x1200mm, 1200沿货叉)	width of aisle right-angle stacking (pallet1200x1200mm clearance 200mm)	Ast	mm	3950
*本公司保留更改产品设计和规格的权利, 恕不另行通知。				

VTDD-15

1.5 tons of electric forklifts



VTDD-15 Product Details Display

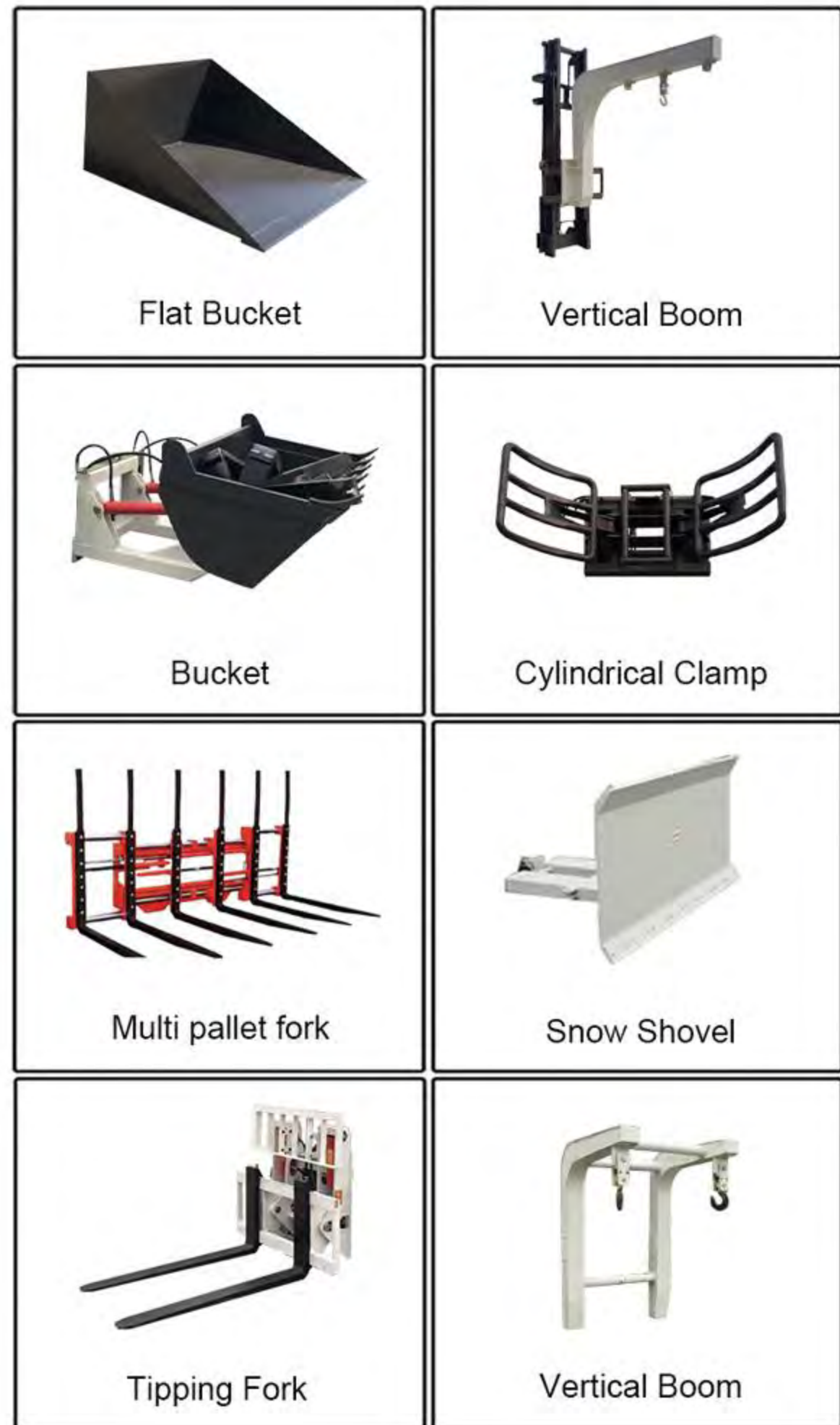




特性 Characteristics				
型号	Model			VTDD-20
驾驶方式	driving mode			座驾式 seated
额定起重量	rated capacity	Q	kg	2000
载荷中心距	load center distance	C	mm	500
动力方式	power mode			铅酸蓄电池 lead-acid battery
轴距	wheelbase	L1	mm	1550
性能 Performance				
行驶速度, 满/空载	travel speed, laden/unladen		km/h	8/9.5
起升速度, 满/空载	lifting speed, laden/unladen		mm/s	180/200
下降速度, 满/空载	lowering speed, laden/unladen		mm/s	550
最大爬坡度, 满/空载	maximum negoniable gradient, laden/unladen		%	15/20
重量 Weight				
自重 (包含蓄电池)	service mass(with battery)		kg	2500
桥负荷: 空载, 前/后	axle load:unloaded, front/rear		kg	
桥负荷: 满载, 前/后	axle load:loaded, front/rear		kg	
蓄电池电压/容量	battery voltage /nominal capacity		V/Ah	60V/210Ah
蓄电池	battery weight		kg	300
电气配置 Electrical configuration				
驱动电机功率-60分钟	drive motor power-60 minutes		kW	5kw permanent magnet synchronization
起升电机功率-15分钟	lift motor power-15 minutes		kW	4.5kw permanent magnet synchronization
驱动电机控制方式	drive motor controlling mode			MOSFET/AC
起升电机控制方式	lifting motor controlling mode			MOSFET/AC
行车制动/停车制动	service brake/parking brake			Hydraulic/Mechanical
轮胎 Tyre				
轮胎类型	tyre type			Solid tire
车轮数量 (前/后)	wheels number(front/rear)			2/2
前轮距	front track	W3	mm	945
后轮距	rear track	W2	mm	880
轮胎, 前	tyre(front)			18*7-10
轮胎, 后	tyre(rear)			15*4 1/2-8
尺寸 Size				
前悬距	front overhang	L2	mm	325
门架倾角, 前/后	tilt of the mast, front/rear	α / β	°	5/10
门架缩回时高度	height, mast retraction	H1	mm	2030
自由起升高度	free lift height	H3	mm	/
最大起升高度	overall maximum lift height	H	mm	3000
门架伸出时高度	height, mast extended	H2	mm	4055
护顶架高度	overhead guard height	H4	mm	2110
货叉调节范围 (外侧) 最大、最小	lateral Fork Adjustment (Outside of Forks) Max/Min	W5	mm	1040/100
货叉尺寸 厚x宽x长	fork size (LxWxT)	T*W*L4	mm	40*100*1070
车体长度 (不含货叉)	truck body length(fork excluded)	L '	mm	2230
车体宽度	truck body width	W1	mm	1096
转弯半径	turning radius	R	mm	2280
门架离地间隙	groubd clearance under mast	H5	mm	88
轴距中心离地间隙 (满载)		H6	mm	110
Ground clearance at center of wheelbase(laden)				
直角堆垛通道宽度 (托盘1000x1200mm, 1000沿货叉)	width of aisle right-angle stacking (pallet1000x1000mm clearance 200mm)	Ast	mm	3750
直角堆垛通道宽度 (托盘800x1200mm, 1200沿货叉)	width of aisle right-angle stacking (pallet1200x1200mm clearance 200mm)	Ast	mm	3950
*本公司保留更改产品设计和规格的权利, 恕不另行通知。				

VTDD-20

2 tons of electric forklifts



VTDD-20 Product Details Display

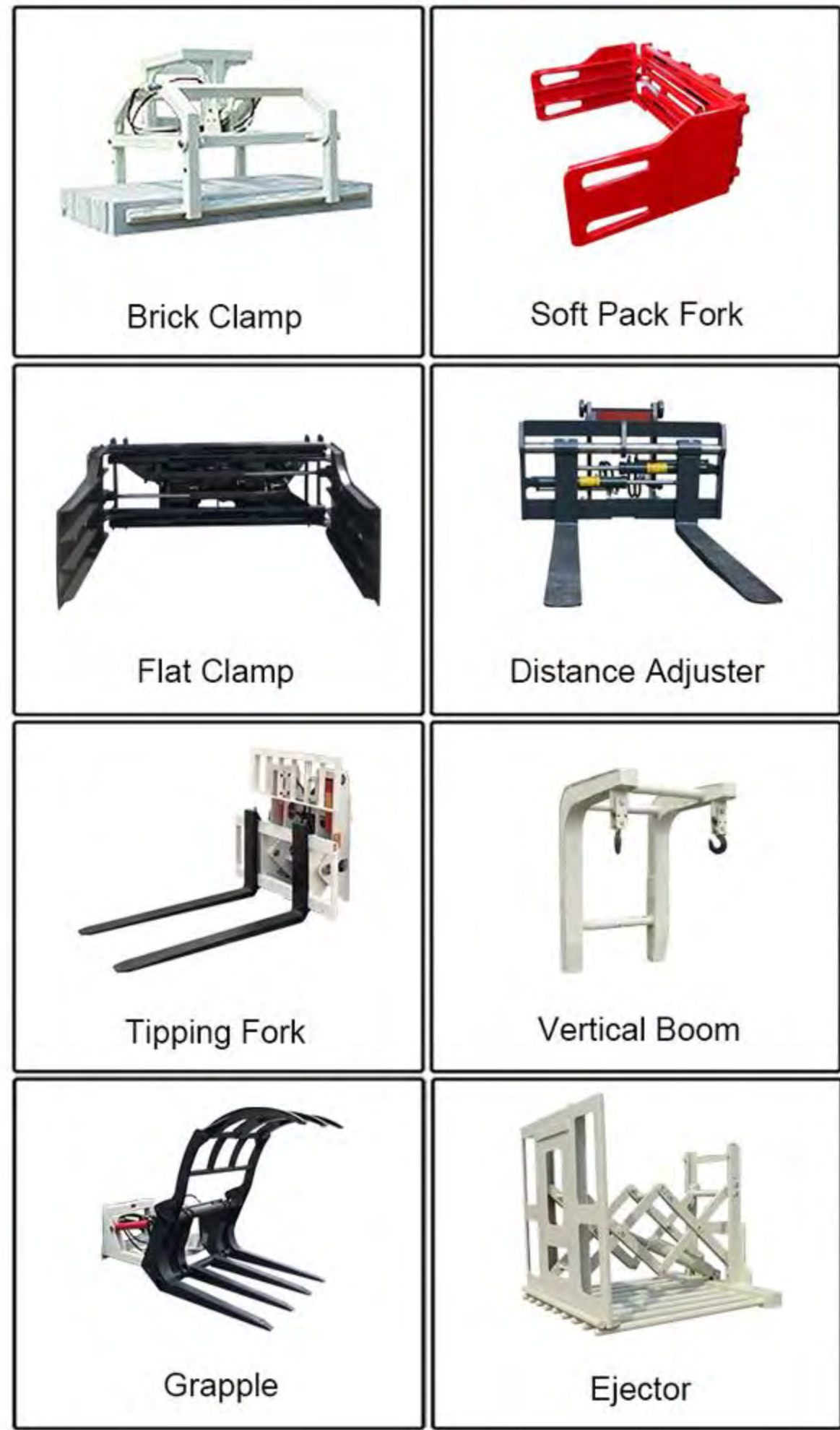




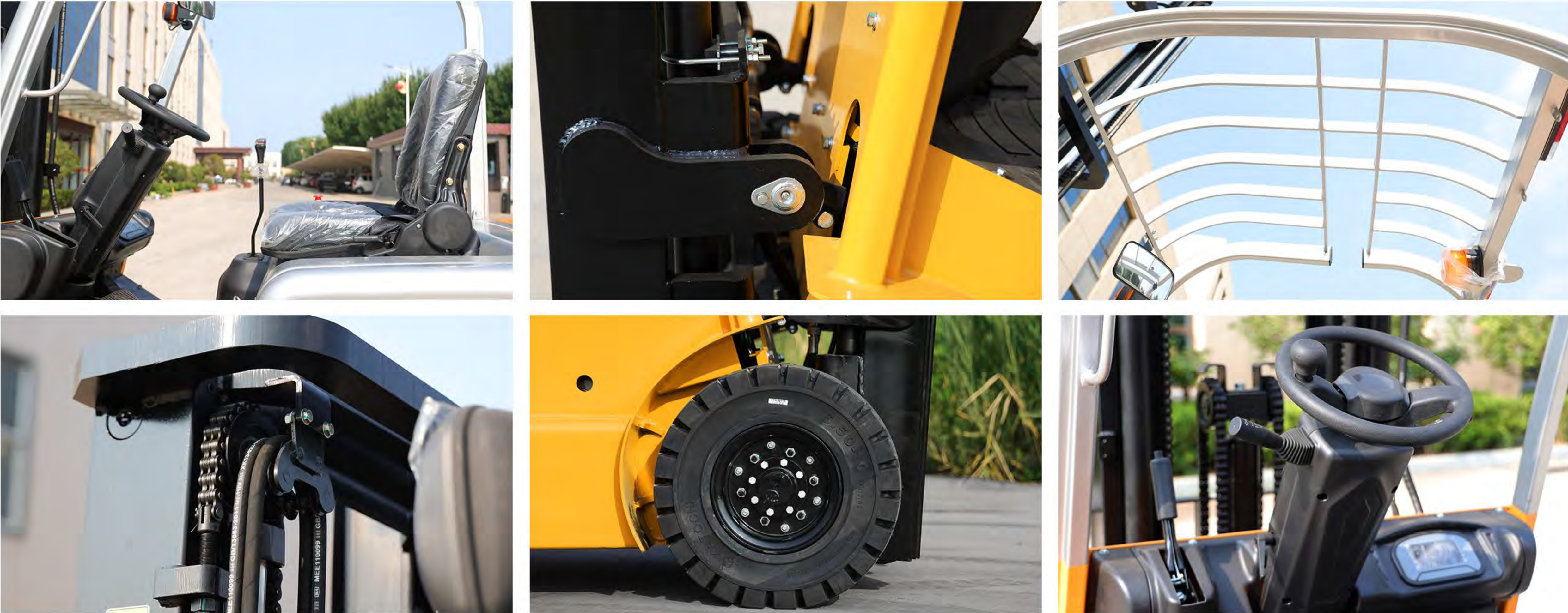
特性 Characteristics				
型号	Model			VTDD-25
驾驶方式	driving mode			座驾式 seated
额定起重量	rated capacity	Q	kg	2500
载荷中心距	load center distance	C	mm	500
动力方式	power mode			铅酸蓄电池 lead-acid battery
轴距	wheelbase	L1	mm	1600
性能 Performance				
行驶速度, 满/空载	travel speed, laden/unladen		km/h	9/10
起升速度, 满/空载	lifting speed, laden/unladen		mm/s	210/250
下降速度, 满/空载	lowering speed, laden/unladen		mm/s	450
最大爬坡度, 满/空载	maximum negoniable gradient, laden/unladen		%	15/20
重量 Weight				
自重 (包含蓄电池)	service mass(with battery)		kg	3150
桥负荷: 空载, 前/后	axle load:unloaded, front/rear		kg	
桥负荷: 满载, 前/后	axle load:loaded, front/rear		kg	
蓄电池电压/容量	battery voltage /nominal capacity		V/Ah	72V/210Ah
蓄电池	battery weight		kg	360
电气配置 Electrical configuration				
驱动电机功率-60分钟	drive motor power-60 minutes		kW	9kw permanent magnet synchronization
起升电机功率-15分钟	lift motor power-15 minutes		kW	7.5kw permanent magnet synchronization
驱动电机控制方式	drive motor controlling mode			MOSFET/AC
起升电机控制方式	lifting motor controlling mode			MOSFET/AC
行车制动/停车制动	service brake/parking brake			Hydraulic/Mechanical
轮胎 Tyre				
轮胎类型	tyre type			Solid tire
车轮数量 (前/后)	wheels number (front/rear)			2/2
前轮距	front track	W3	mm	1010
后轮距	rear track	W2	mm	880
轮胎, 前	tyre(front)			6. 5-10
轮胎, 后	tyre(rear)			16*6-8
尺寸 Size				
前悬距	front overhang	L2	mm	410
门架倾角, 前/后	tilt of the mast, front/rear	α / β	°	5/10
门架缩回时高度	height, mast retraction	H1	mm	2030
自由起升高度	free lift height	H3	mm	/
最大起升高度	overall maximum lift height	H	mm	3000
门架伸出时高度	height, mast extended	H2	mm	4055
护顶架高度	overhead guard height	H4	mm	2110
货叉调节范围 (外侧) 最大、最小		W5	mm	1040/100
lateral Fork Adjustment (Outside of Forks) Max/Min				
货叉尺寸 厚x宽x长	fork size (LxWxT)	T*W*L4	mm	40*100*1070
车体长度 (不含货叉)	truck body length (fork excluded)	L '	mm	2390
车体宽度	truck body width	W1	mm	1160
转弯半径	turning radius	R	mm	2370
门架离地间隙	groubd clearance under mast	H5	mm	88
轴距中心离地间隙 (满载)		H6	mm	110
Ground clearance at center of wheelbase (laden)				
直角堆垛通道宽度 (托盘1000x1200mm, 1000沿货叉)				
width of aisle right-angle stacking (pallet1000x1000mm clearance 200mm)		Ast	mm	3750
直角堆垛通道宽度 (托盘800x1200mm, 1200沿货叉)				
width of aisle right-angle stacking (pallet1200x1200mm clearance 200mm)		Ast	mm	3950
*本公司保留更改产品设计和规格的权利, 恕不另行通知。				

VTDD-25

2.5 tons of electric forklifts



VTDD-25 Product Details Display

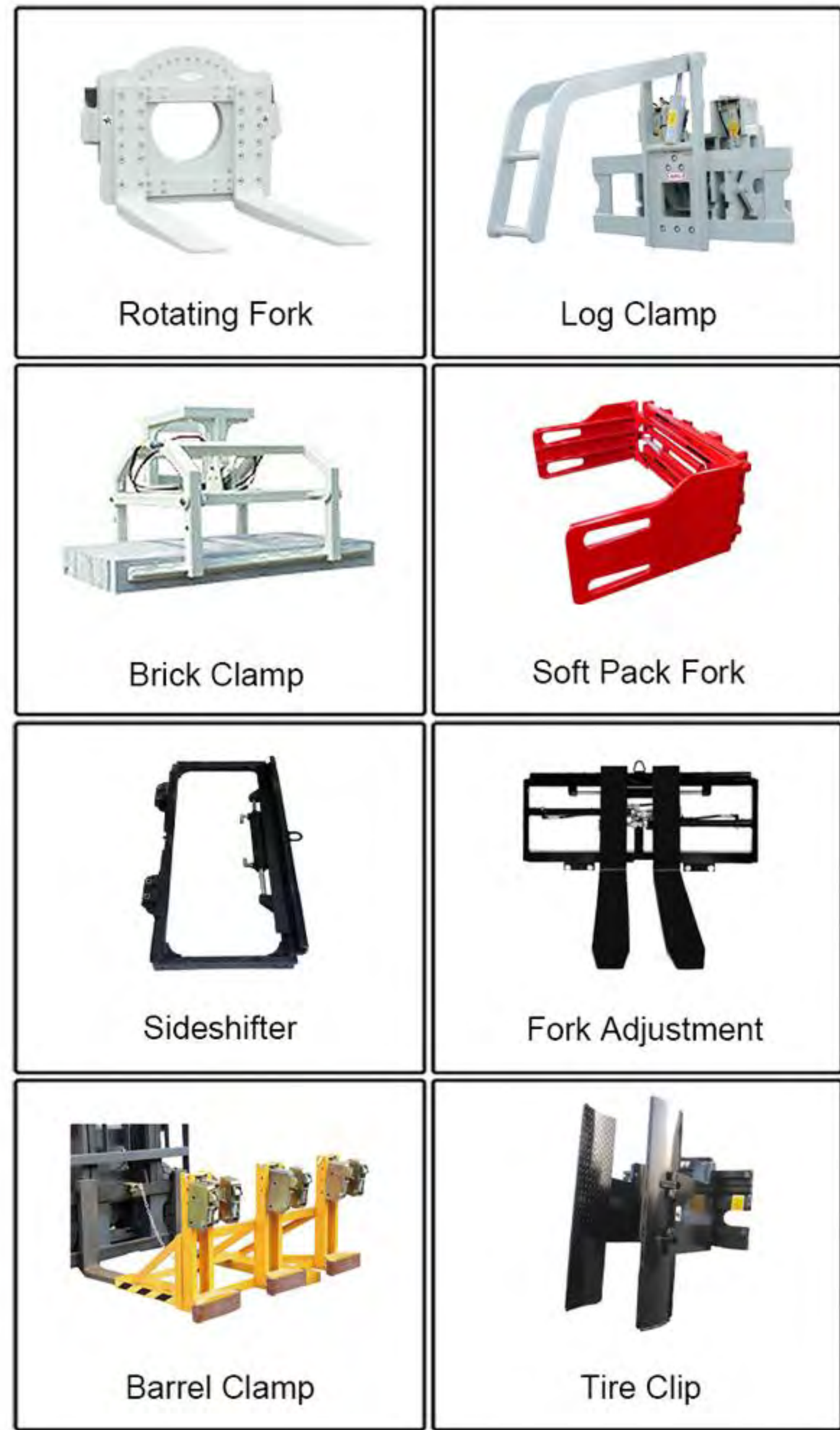




特性 Characteristics				
型号	Model			VTDD-30
驾驶方式	driving mode			座驾式 seated
额定起重量	rated capacity	Q	kg	3000
载荷中心距	load center distance	C	mm	500
动力方式	power mode			铅酸蓄电池 lead-acid battery
轴距	wheelbase	L1	mm	1850
性能 Performance				
行驶速度, 满/空载	travel speed, laden/unladen		km/h	10/10
起升速度, 满/空载	lifting speed, laden/unladen		mm/s	200/300
下降速度, 满/空载	lowering speed, laden/unladen		mm/s	450
最大爬坡度, 满/空载	maximum negoniable gradient, laden/unladen		%	12/15
重量 Weight				
自重 (包含蓄电池)	service mass(with battery)		kg	4150
桥负荷: 空载, 前/后	axle load:unloaded, front/rear		kg	
桥负荷: 满载, 前/后	axle load:loaded, front/rear		kg	
蓄电池电压/容量	battery voltage /nominal capacity		V/Ah	72V/260Ah
蓄电池	battery weight		kg	430
电气配置 Electrical configuration				
驱动电机功率-60分钟	drive motor power-60 minutes		kW	9kw permanent magnet synchronization
起升电机功率-15分钟	lift motor power-15 minutes		kW	9kw permanent magnet synchronization
驱动电机控制方式	drive motor controlling mode			MOSFET/AC
起升电机控制方式	lifting motor controlling mode			MOSFET/AC
行车制动/停车制动	service brake/parking brake			Hydraulic/Mechanical
轮胎 Tyre				
轮胎类型	tyre type			Inflatable tire
车轮数量 (前/后)	wheels number (front/rear)			2/2
前轮距	front track	W3	mm	1000
后轮距	rear track	W2	mm	994
轮胎, 前	tyre(front)			28*9-15
轮胎, 后	tyre(rear)			18*7-8
尺寸 Size				
前悬距	front overhang	L2	mm	467
门架倾角, 前/后	tilt of the mast, front/rear	α / β	°	5/10
门架缩回时高度	height, mast retraction	H1	mm	2057
自由起升高度	free lift height	H3	mm	120
最大起升高度	overall maximum lift height	H	mm	3000
门架伸出时高度	height, mast extended	H2	mm	4200
护顶架高度	overhead guard height	H4	mm	2200
货叉调节范围 (外侧) 最大、最小	lateral Fork Adjustment (Outside of Forks) Max/Min	W5	mm	1100/244
货叉尺寸 厚x宽x长	fork size (LxWxT)	T*W*L4	mm	45*122*1070
车体长度 (不含货叉)	truck body length (fork excluded)	L '	mm	2700
车体宽度	truck body width	W1	mm	1225
转弯半径	turning radius	R	mm	2680
门架离地间隙	groubd clearance under mast	H5	mm	82
轴距中心离地间隙 (满载)	Ground clearance at center of wheelbase (laden)	H6	mm	145
直角堆垛通道宽度 (托盘1000x1200mm, 1000沿货叉)	width of aisle right-angle stacking (pallet1000x1000mm clearance 200mm)	Ast	mm	4100
直角堆垛通道宽度 (托盘800x1200mm, 1200沿货叉)	width of aisle right-angle stacking (pallet1200x1200mm clearance 200mm)	Ast	mm	4300
*本公司保留更改产品设计和规格的权利, 恕不另行通知。				

VTDD-30

3 tons of electric forklifts



VTDD-30 Product Details Display

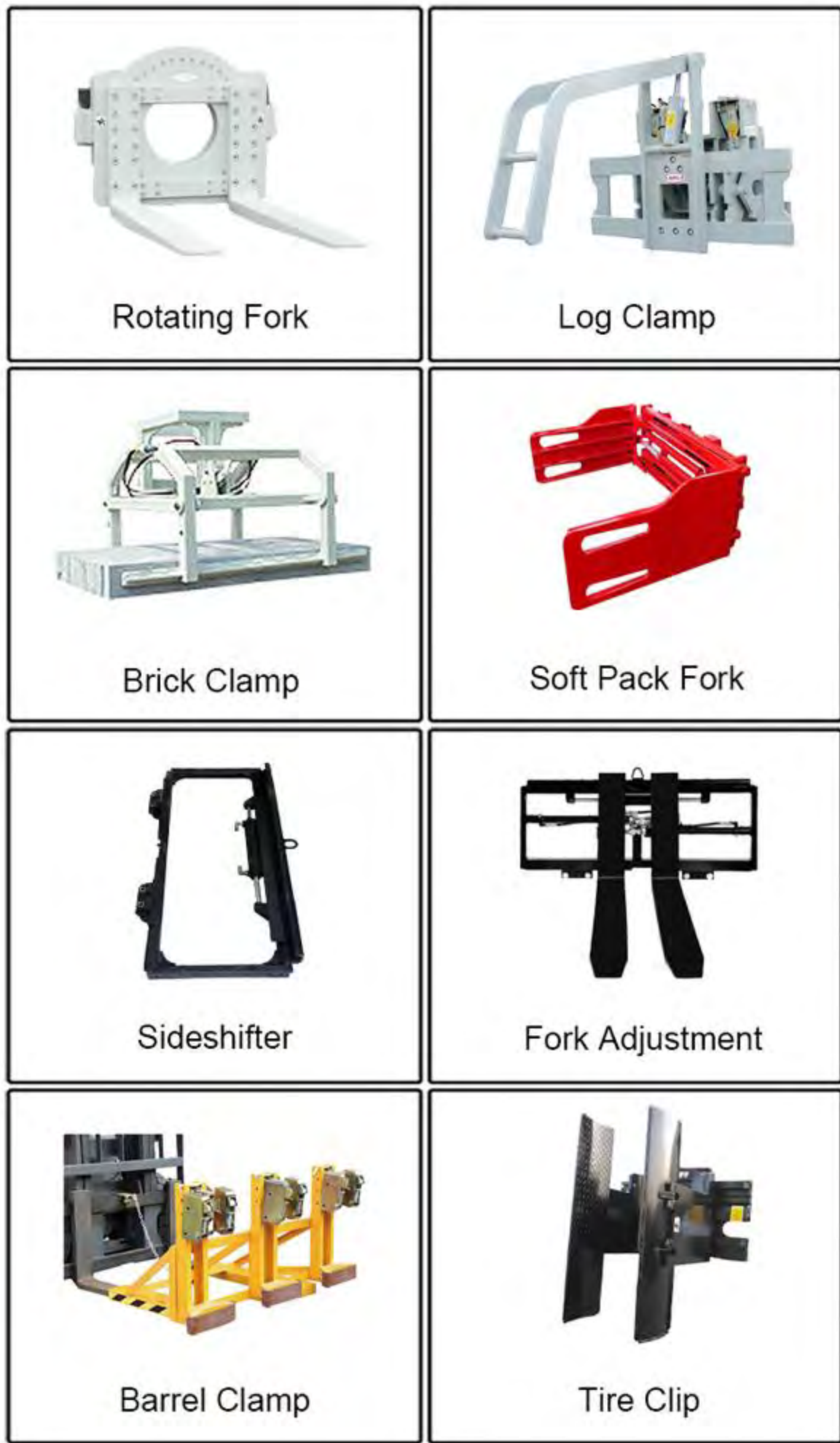




特性 Characteristics				
型号	Model			VTDD-35
驾驶方式	driving mode			座驾式 seated
额定起重量	rated capacity	Q	kg	3500
载荷中心距	load center distance	C	mm	500
动力方式	power mode			铅酸蓄电池 lead-acid battery
轴距	wheelbase	L1	mm	1850
性能 Performance				
行驶速度, 满/空载	travel speed, laden/unladen		km/h	10/10
起升速度, 满/空载	lifting speed, laden/unladen		mm/s	200/300
下降速度, 满/空载	lowering speed, laden/unladen		mm/s	450
最大爬坡度, 满/空载	maximum negoniable gradient, laden/unladen		%	12/20
重量 Weight				
自重 (包含蓄电池)	service mass(with battery)		kg	4400
桥负荷: 空载, 前/后	axle load:unloaded, front/rear		kg	
桥负荷: 满载, 前/后	axle load:loaded, front/rear		kg	
蓄电池电压/容量	battery voltage /nominal capacity		V/Ah	72V/260Ah
蓄电池	battery weight		kg	430
电气配置 Electrical configuration				
驱动电机功率-60分钟	drive motor power-60 minutes		kW	9kw permanent magnet synchronization
起升电机功率-15分钟	lift motor power-15 minutes		kW	9kw permanent magnet synchronization
驱动电机控制方式	drive motor controlling mode			MOSFET/AC
起升电机控制方式	lifting motor controlling mode			MOSFET/AC
行车制动/停车制动	service brake/parking brake			Hydraulic/Mechanical
轮胎 Tyre				
轮胎类型	tyre type			Inflatable tire
车轮数量 (前/后)	wheels number(front/rear)			2/2
前轮距	front track	W3	mm	1002
后轮距	rear track	W2	mm	994
轮胎, 前	tyre(front)			28*9-15
轮胎, 后	tyre(rear)			18*7-8
尺寸 Size				
前悬距	front overhang	L2	mm	467
门架倾角, 前/后	tilt of the mast, front/rear	α / β	°	5/10
门架缩回时高度	height, mast retraction	H1	mm	2057
自由起升高度	free lift height	H3	mm	120
最大起升高度	overall maximum lift height	H	mm	3000
门架伸出时高度	height, mast extended	H2	mm	4200
护顶架高度	overhead guard height	H4	mm	2200
货叉调节范围 (外侧) 最大、最小	lateral Fork Adjustment (Outside of Forks) Max/Min	W5	mm	1100/244
货叉尺寸 厚x宽x长	fork size (LxWxT)	T*W*L4	mm	45*122*1070
车体长度 (不含货叉)	truck body length(fork excluded)	L '	mm	2680
车体宽度	truck body width	W1	mm	1225
转弯半径	turning radius	R	mm	2300
门架离地间隙	groubd clearance under mast	H5	mm	82
轴距中心离地间隙 (满载)		H6	mm	145
Ground clearance at center of wheelbase(laden)				
直角堆垛通道宽度 (托盘1000x1200mm, 1000沿货叉)	width of aisle right-angle stacking (pallet1000x1000mm clearance 200mm)	Ast	mm	4100
直角堆垛通道宽度 (托盘800x1200mm, 1200沿货叉)	width of aisle right-angle stacking (pallet1200x1200mm clearance 200mm)	Ast	mm	4300
*本公司保留更改产品设计和规格的权利, 恕不另行通知。				

VTDD-35

3.5 tons of electric forklifts



VTDD-35 Product Details Display

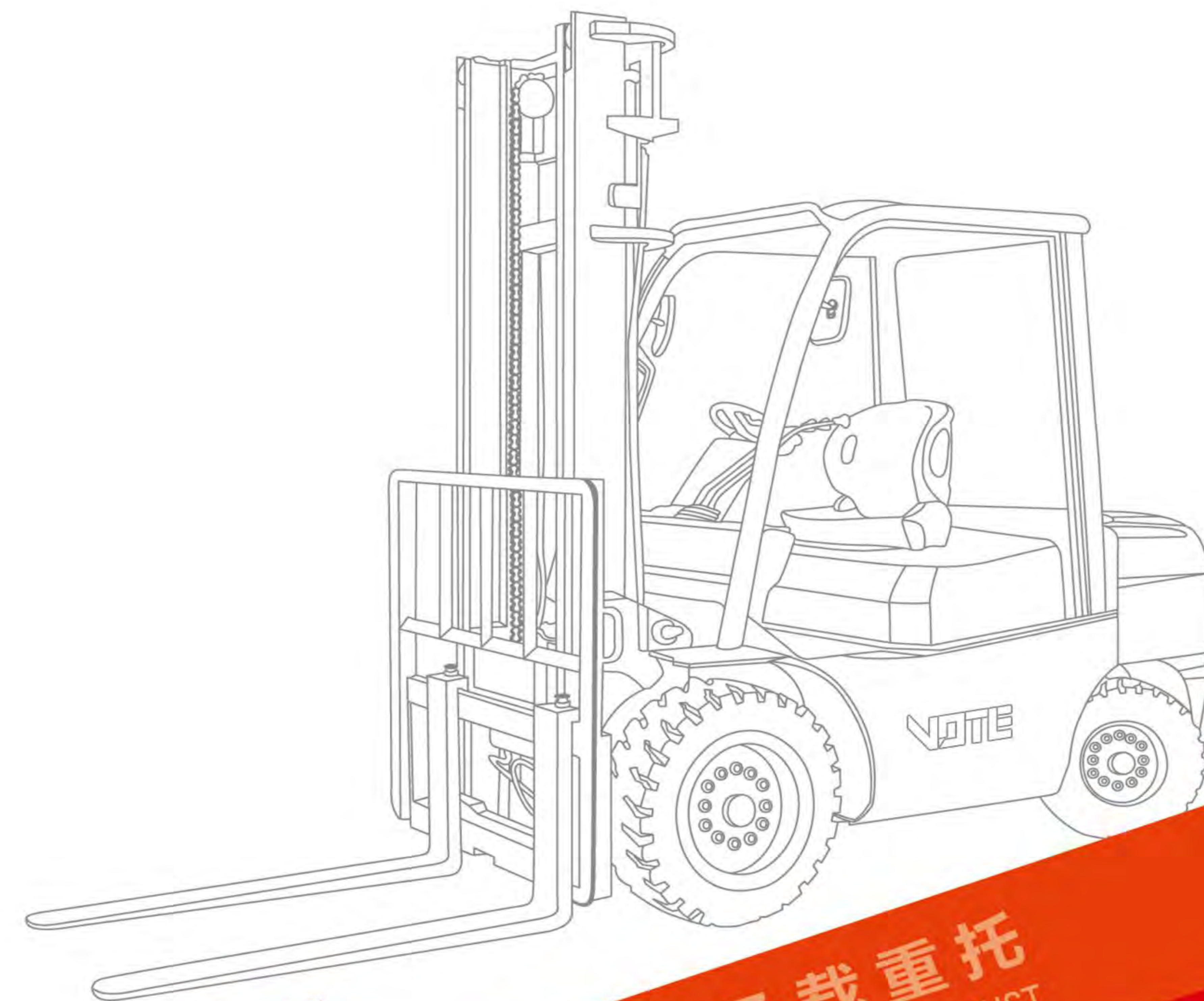


Lareina

+86 18678715331
vote15@china-vote.com

JINING VOTE MACHINERY TECHNOLOGY CO., LTD.

Address: Nanzhang Industrial Park, Nanzhang Sub-district, Rencheng District, Jining, Shandong, China



沃特叉车 / 承载重托
VOTE FORKLIFT BEARING GREAT TRUST

济宁沃特机械科技有限公司

JINING VOTE MACHINERY TECHNOLOGY CO., LTD.



FORKLIFT CATALOG

VTF-3000



PARAMETER

VTF-3000

Model	VTF-3000
Dimensions	4200*1800*2700mm
Engine model	HUADONG 4DBY4(490)
Fork length	1220mm
Rated lift weight	3000kg
Turning radius	3500mm
Platform ground clearance	300mm
Axle	Small wheel side weight cast steel bridge
Tire	20.5/70-16
Gantry width	160mm
Overall weight	4000kg
Engine power	40kw
Gradeability	≤38°
Rated lifting height	3000-6000mm
Front ground clearance	250-350mm
Drive type	4-wheel drive
Gearbox	265 high and low speed large pump torque converter
Frame	Hinged thick 2.5mm



FORKLIFT CATALOG

VTF-3500



PARAMETER

VTF-3500

Model	VTF-3500
Model	VTF-3500
Dimensions	4200*1800*2700mm
Engine model	YUNNEI YN27GBZ(490 Turbocharged)
Fork length	1220mm
Rated lift weight	3500kg
Turning radius	3500mm
Platform ground clearance	300mm
Axle	Small wheel side weight cast steel bridge
Tire	20.5/70-16
Gantry width	160mm
Overall weight	4200kg
Engine power	58kw
Gradeability	≤38°
Rated lifting height	3000-6000mm
Front ground clearance	250-350mm
Drive type	4-wheel drive
Gearbox	265 Double high and low speed large pump torque converter
Frame	Hinged thick 3mm



FORKLIFT CATALOG

VTF-4000



PARAMETER

VTF-4000

Model	VTF-4000
Dimensions	4400*1900*2800mm
Engine model	HUADONG4102 supercharged
Fork length	1520mm
Rated lift weight	4000kg
Turning radius	3500mm
Platform ground clearance	350mm
Max speed	35km/h
Tire	16/70-20
Gantry width	180mm
Overall weight	5500kg
Engine power	76kw
Gradeability	≤38°
Rated lifting height	4000-7000mm
Front ground clearance	300-380mm
Drive type	4-wheel drive
Gearbox	280 double high and low speed torque converter
Frame	Hinged thick 3.5mm



FORKLIFT CATALOG

VTF-5000



PARAMETER

VTF-5000

Model	VTF-5000
Dimensions	4400*1900*2900mm
Engine model	YUNNEI (4102 Turbocharged)
Fork length	1520mm
Rated lift weight	5000kg
Turning radius	4500mm
Platform ground clearance	350mm
Axle	Large wheel steel bridge
Tire	16/70-20
Gantry width	180mm
Overall weight	5500kg
Engine power	76kw
Gradeability	≤38°
Rated lifting height	3000-6000mm
Front ground clearance	300-380mm
Drive type	4-wheel drive
Gearbox	280 Double high and low speed torque converter
Frame	Hinged thick 3.5mm



FORKLIFT CATALOG

VTF-6000



PARAMETER

VTF-6000

Model	VTF-6000
Dimensions	4400*2200*2900mm
Engine model	Yunnei 4102 Supercharging
Engine power	76kw
Fork length	1520mm
Climbing angle	≤35°
Rated Lifting Weight	6000kg
Rated lift height	3000-6000mm
Turning radius	4600mm
Mast front ground clearance	300-380mm
Ground Clearance	350mm
Drive mode	Four-wheel drive
Axle	Big 30 axle
Gearbox	280 double high and low speed torque converter
Tire	Front four and rear two steel wire tires
Frame	Weighted frame member
Mast width	200mm