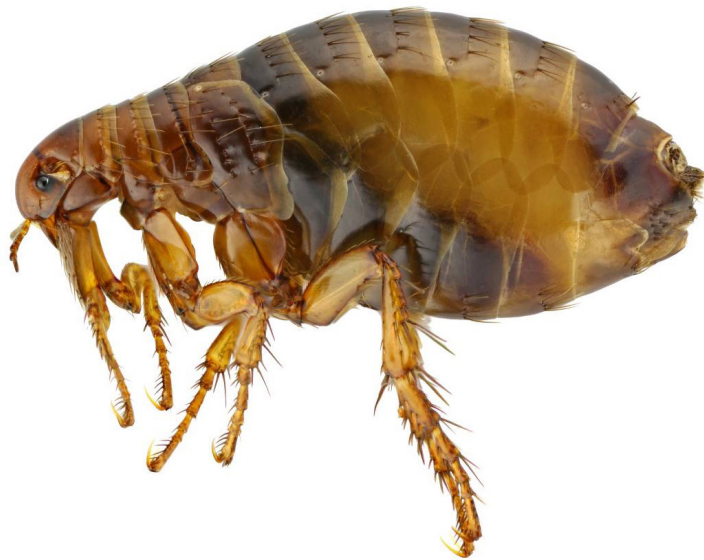




## Are Fleas Bugging You?

### The Flea's Life Cycle

Understanding the flea's life cycle is important in order to properly control them. Adult fleas lay eggs after taking a blood meal from the host (your dog or cat). The eggs hatch into larvae (tiny worm stage, comparable to a butterfly caterpillar). The larvae form a pupa (comparable to a butterfly cocoon or pupa). The pupae hatch out to release the adult flea.



### Some Horrifying Facts About Fleas

- Just a few adult fleas in your house can multiply to thousands in just one month.
- The female flea can lay 2,000 eggs in her life-time. The eggs may take months to hatch.
- The pupae may take months to open after they are formed.
- An adult flea can hide out in your house for weeks without eating.
- Only the adults and larvae are killed by insecticides. The egg and pupal stages are resistant. Other means have to be used to control these stages.
- Fleas can jump 30,000 times without stopping. They can jump 100 times their length with a take-off acceleration dozens of times that of a space rocket.
- Each adult female flea drinks 10-15 times its own body weight in blood each day.

### How to Control Fleas

It is important to attack the fleas in three areas:

1. On the pet
2. In the house
3. In the yard

#### Area 1: The Pet

**Step 1:** Shampoo.

**Step 2:** Begin individual prevention on the pet with a veterinary approved topical or oral agent.

**Step 3:** Remove the pet from the premises, so treatment of the environment can begin.

#### Area 2: The House

**Step 1:** Clean your home

It is very important that you clean your home prior to treating it for fleas. Wash your pet's bedding thoroughly in hot water or destroy it. Next, carefully vacuum all areas of the house, especially under furniture, between and under

*Continued on next page*

Continued from previous page

furniture cushions, wall-floor junctions, and favorite resting areas of your pet.

After vacuuming, dispose of vacuum bags outdoors in an airtight plastic bag. Next, mop all non-carpeted floors paying special attention to wall-floor junctions. Strip beds, leaving only a fitted sheet over the mattress. Put all cooking utensils and appliances in a cabinet.

### **Step 2: Apply the Treatment**

**Fogger** – Unfold a section of newspaper, place the fogger on it and then activate the fogger. Leave the house immediately. Return to the house after two hours. Open the windows and doors and leave again for 30 minutes while the house is airing out.

**Spray** – In non-carpeted rooms just spray the wall-floor junctions. In carpeted rooms, mist the entire carpet, covering it evenly with the spray. Leave the house after completing the spraying for an hour or two to allow the spray to dry. Veterinary strength foggers and sprays provide about 4-8 weeks of good flea control by combining potent insecticides that have approximately a

three week residual effect with an artificial insect growth hormone that helps prevent further development of juvenile fleas. The hormone stays active in the house for up to 30 weeks.

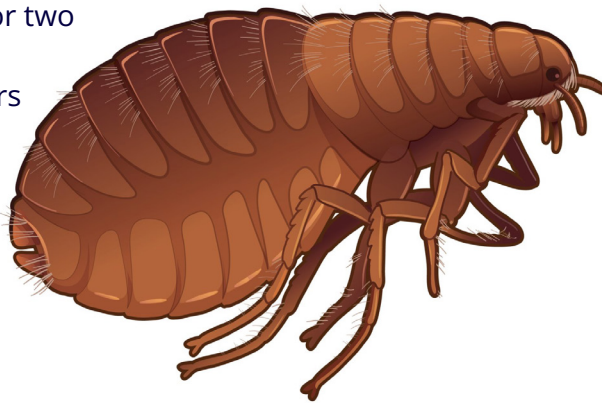
The home may need to be initially treated as often as every 2-3 weeks for three or four treatments to gain control of a severe flea infestation. Consider the use of a professional exterminator.

### **Area 3: The Yard and Kennel**

**Step 1:** Remove all animals from the area to be treated.

**Step 2:** Apply the treatment. Allow the yard and kennel to completely dry before re-introducing the animals.

As with the home, multiple treatments may be initially required.



**Please ask us for recommendations to control your individual flea problem!**