



MADE IN THE  
**USA**

## APPLICATIONS

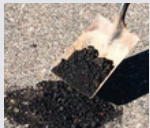
Pothole repair  
Crack & joint sealing  
Seal utility cuts  
Manhole & utility surround  
Hide/cover unused road markers  
Seal distressed pavement  
Protect speed bump edges  
Fix uneven bridge joints

# American Road Patch™ LLC

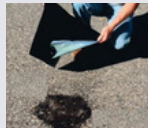
patented

## Embeds into roadway to form a waterproof seal, extending the life of repairs

### INSTRUCTIONS OVERVIEW



1. Remove loose material from repair site. Fill and seal intersection cracks around repair. Fill area with hot or cold asphalt fill mix.



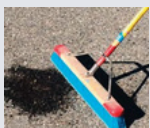
4. Cut patch to extend beyond repair area by 4" on all sides. If 2 or more pieces are required to cover the area, a min. of 3" overlap is required.



2. Compact fill mix. The material should be compacted so that the surface of the fill is level or slightly above the surface of the roadway.



5. Peel the release film - apply to prepared area. Tamp or roll to bond patch to clean, dry pavement. Patch should be exposed to traffic immediately.



3. Clean area of dust, debris, salts or oils. Dry completely. If ambient temp is below 75°F, either apply propane torch to surface and heat or apply approved primer.

For more information visit [www.americanroadpatch.com](http://www.americanroadpatch.com)



ROLL SIZE (WxL)	PALLET QTY	UPC	ROLL WEIGHT (nominal)	BASIS WEIGHT (nominal)	THICKNESS (nominal)	TENSILE STRENGTH
39.37" x 21'	25	038662948620	75 lb	1 lbs/sqft	.18	50 kN/m

# EASY. EFFECTIVE. LONG TERM REPAIRS.

Embeds into roadway to form a waterproof seal, extending the life of repairs.

## Introducing patented American Road Patch™

### Introducing patented American Road Patch™

Today's current road repair methods do not address the cause of the problem - keeping water out. Traditional repair methods use only fills, which are temporary at best. American Road Patch™ is the solution! Take the extra step now and avoid repeat repair work later.

American Road Patch™ Peel and Seal Repair Patch embeds into the roadway forming a waterproof seal, extending the life of repairs. Unlike traditional methods, American Road Patch™ is a cost effective product that properly contains, strengthens, and seals potholes, cracks, and utility cut repairs.



**Easy to apply**  
without special  
trucks or equipment



**High-strength**  
fiberglass grid  
reinforced.



**Bonds to both**  
asphalt or  
concrete



**Patented**  
technology



**Plow resistant**

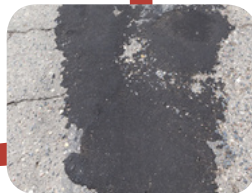


**Repairs without**  
shutting down  
the roadway

## STOP THE REPAIR CYCLE

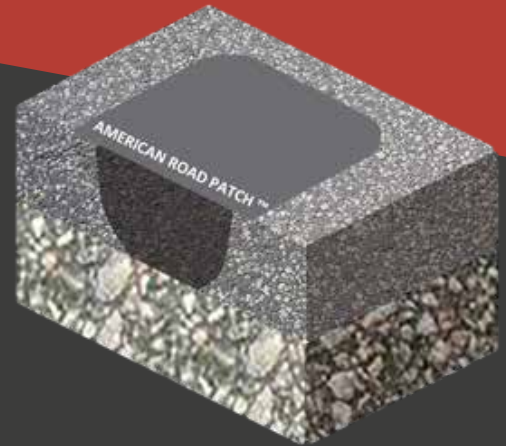


**Current repair**  
methods erode  
over time



*PEEL & SEAL*  
*Pavement Patch*  
**American Road Patch™**

**Seals, strengthens &**  
**contains repairs**



## APPLICATIONS



**Pothole**  
repair



**Crack & joint**  
sealing



**Seal utility**  
cuts



**Manhole & utility**  
surround



**Hide/cover**  
unused road  
markers



**Fix uneven**  
bridge joints