



DASHCAMS



INDOOR TRACKING



MAINTENANCE



DRIVER APPS



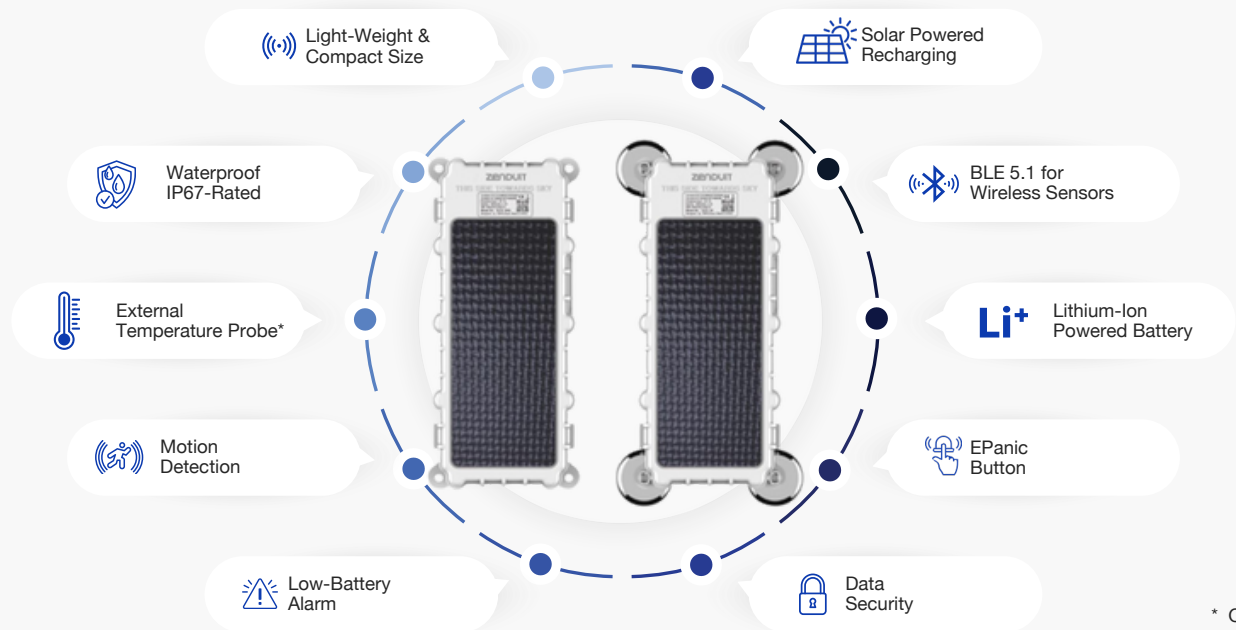
WORK MANAGEMENT



ASSET MONITORING

### HW ZenduTRACKER TLP2-SFB

LTE CAT M-1 (eMTC) / CAT NB1 (NB-IoT) & GSM -Power Large Asset tracking devices for Wide-Ranging Applications



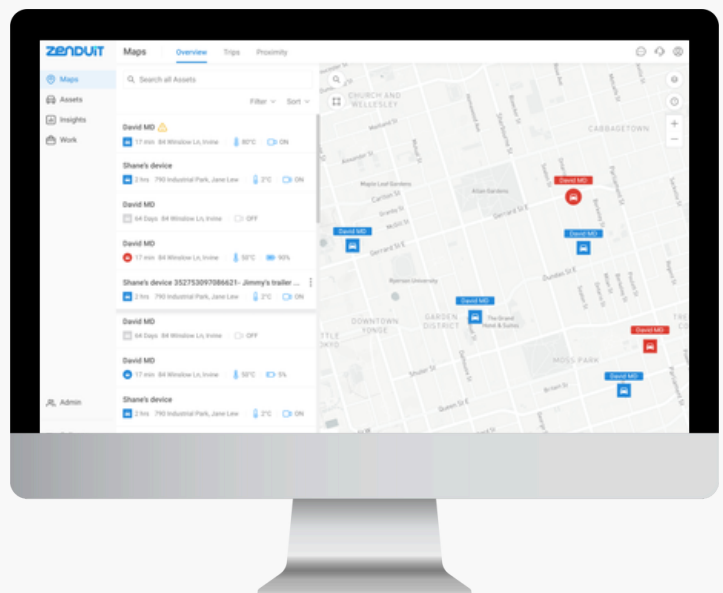
\* Optional

### Comprehensive Large Solar Powered Tracking for Dry Trailers and Containers

The TLP2-SFB (4G LTE) by TOPFLYtech is a large solar-powered asset tracker designed for monitoring assets like containers, trailers, and trucks. It features real-time and buffer location tracking, movement and removal alerts, and is powered by a solar panel to extend its battery life. The device is rugged, waterproof (IP67), and equipped with a rechargeable battery that lasts for months without solar charging. It supports BLE 5.0 for sensor connectivity and is easy to install with various mounting options.



[More Info](#)



# FEATURES

# HwySmart

## Precise Real-Time Tracking with Alerts

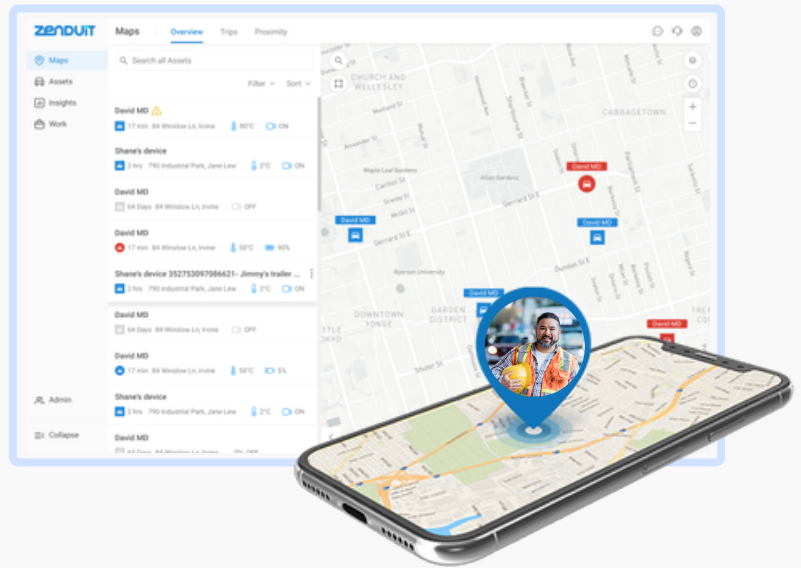
The TLP2-SFB tracker offers advanced real-time location tracking, enabling precise monitoring of asset movements at any time. This feature ensures that users can track their assets continuously and accurately, which is critical for fleet management, logistics, and other asset-intensive industries. Additionally, the tracker supports customizable alerts for specific events, such as unauthorized movement or tampering. These alerts are immediately sent to the user, providing an extra layer of security by enabling rapid response to potential theft or misuse.

## Lithium-Ion Battery Powered

The TLP2-SFB (4G LTE) tracker features an efficient solar panel that continuously recharges its internal battery, providing a sustainable power source. This is especially beneficial for assets like trailers, containers, and heavy equipment that are often outdoors. The solar panel extends battery life by harnessing sunlight, reducing the need for manual recharging or battery replacement, and ensuring long-term operation, even in remote locations. This makes the tracker ideal for reliable, low-maintenance asset monitoring in various environments.

## Rugged and Waterproof Design

With an IP67 rating, the tracker is highly durable and waterproof, making it suitable for harsh environments and ensuring reliable operation under extreme conditions.



**IP67 Rating**  
Waterproof Tested

# HOW IT WORKS?

01

## Installation and Activation

The tracker is installed on the asset, such as a trailer or container, using its rugged mounting options. Once installed, the device is activated, and it begins to monitor the asset's location and status.



02

## Real-Time Location Tracking

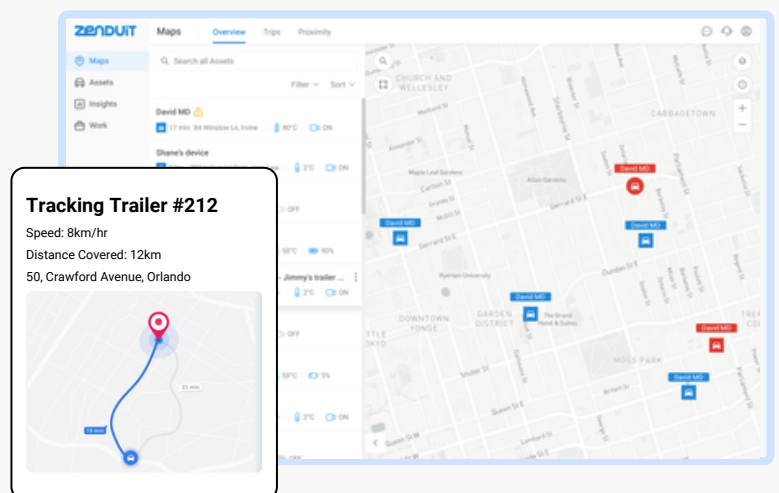
The tracker continuously collects data on the asset's location, movement, and environmental conditions. This data is transmitted via 4G LTE to a central monitoring system, where it can be accessed in real-time.



03

## Alerts and Reporting

If the asset is moved unexpectedly or tampered with, the tracker sends instant alerts to the user. The system also generates detailed reports on asset usage and location history, enabling efficient asset management and enhanced security.





## ACCESSORY ADD-ONS

Maximize the potential of your ZenduTRACKER TLP2-SFB Asset Tracker with a range of accessories designed to enhance its functionality. Add wireless sensors for monitoring additional environmental parameters, utilize external temperature probes for precise temperature tracking, and integrate Bluetooth-enabled accessories to expand its capabilities.



**TSR1-B BLE 5.0 Wireless Relay**



**TSTH1-B BLE 5.0 Temp. & Humidity Sensor**



**T-sense BLE 5.1 Temp. & Door Sensor**



**T-one Probe Temperature Sensor**



**T-button BLE 5.1 Key Fob and Panic Button**

## PRODUCT SPECIFICATION

Operating Band	FDD: 81/82/83/B4/B5/B8/B12/813/B19/B20/825/B28 TDD: B39 (Cat M1 only) EGPRS 850/900/1800/1900MHz
Data Transmission	eMTC: Max. 300Kbps (DL), Max. 375Kbps (UL) NB1: Max. 32Kbps (DL), Max. 70Kbps (UL) EDGE: Max. 296Kbps (DL), Max. 236.8Kbps (UL) GPRS: Max. 107Kbps (DL), Max. 85.6Kbps (UL)
GPS Chipset Paraller GNSS	Qualcomm Gen 8C GNSS receiver
Receiver Type	GPS + Glonass + Galileo + Beidou
Sensitivity Horizontal Position	33 tracking / 99 Acquisitions- Channel GNSS Receiver
Accuracy	Cold start: -149 dBm Tracking: -163 dBm Autonomous < 2m CEP
Standalone TIFF	Cold Start: < 29s Warm Start: < 27s Hot Start: < 1s
Charging & Data Transmission	4 Pin port with magnet
Network GNSS Antenna	Internal only
Indicator LED	Network, GNSS and Battery
FOTA	Yes
Physical Power Switch	1
Light Sensor	1 back light sensor
Temperature Sensor	1 temperature sensor
BLE 5.0	Yes
Water-Proof	IP67
Solar Panel	For charging the tracker battery
Dimensions	85mm x 185mm x 31 mm (3.35" x 7.28" x 1.22")
Weight	370g (13.05oz)
Battery	Rechargeable Li 9600 mAh/ 3.6V
Stand-By Time (Without Solar Charging, 2 Hours Active Tracking / Day)	10 minutes reporting: 320 Days 5 minutes reporting: 170 Days 1 minute reporting: 68 Days
Charging & Data Communication	Magnetic USB cable (recommend using 5V 1A adaptor, 20 hours charging)
Operating Temperature	-25°C ~ +70°C (-13°F ~ 158°F)
Mounting	Magnet/Screw
Transmit Protocol	TCP, UDP, MQTT, SMS
Data Security & Encryption Support	MD5 / AES256
BLE Accessory Support	Yes
Scheduled Timing / Angle / Distance Report	Report Position and Status at preset intervals
Geo-Fence	Support up to 64 internal geo-fence regions
Low Power Alarm	Sending alarm when battery is low
Motion-Detection	Motion alarm based on internal 3-axis accelerometer
Removal Alarm	Sending alarm when the light sensor detecting the light changing