

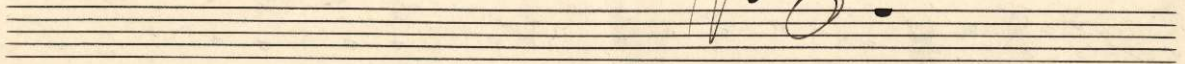
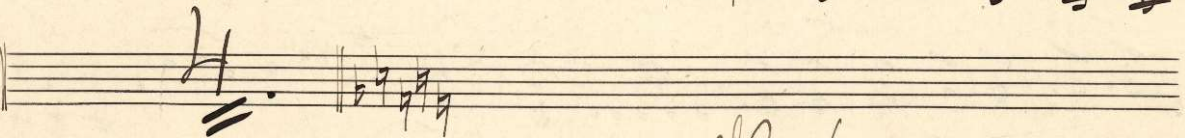
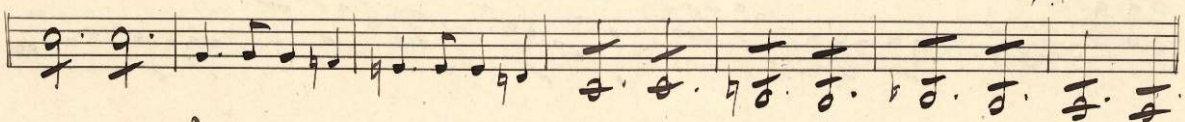
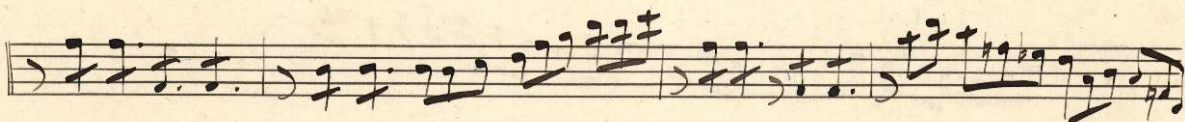
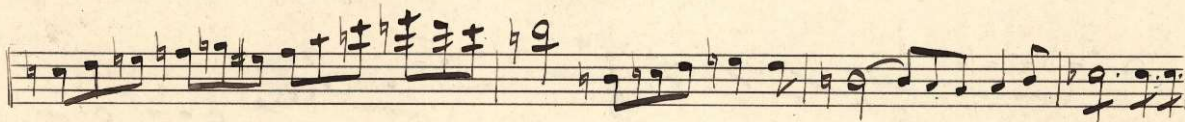
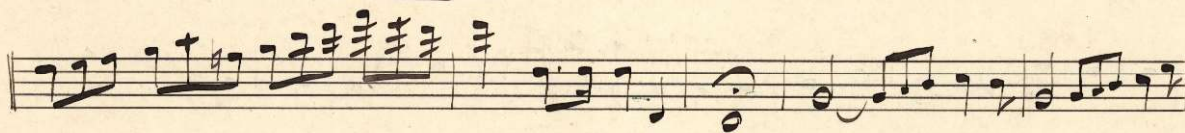
00267

*De profundis*

*Cello*

*Kantate*

*Lento.*



*Al. S.*



Moderato.

00268

Handwritten musical notation for the Moderato section, consisting of five staves. The notation includes various rhythmic values, accidentals, and dynamic markings such as *ppizz.* and *arco*. The first staff begins with a treble clef and a key signature of one sharp (F#). The music features a mix of eighth and sixteenth notes, with some measures containing rests and slurs.

Lento.

Handwritten musical notation for the Lento section, consisting of ten staves. The notation includes various rhythmic values, accidentals, and dynamic markings. The first staff begins with a treble clef and a key signature of one sharp (F#). The music features a mix of eighth and sixteenth notes, with some measures containing rests and slurs. The notation is dense and includes many accidentals, suggesting a complex harmonic structure.