

MIZZOU

MEN'S BASKETBALL

THE BEGINNING OF THE KIM ANDERSON ERA // 26 NCAA TOURNAMENT APPEARANCES // 4 ELITE EIGHT APPEARANCES

MISSOURI TIGERS (7-8, 1-1) AT #1 KENTUCKY WILDCATS (15-0, 2-0)



TUESDAY, JAN. 13 // 8 P.M. CT // RUPP ARENA (24,000)

@MizzouHoops

2014-15 Record	7-8
2014-15 SEC Record	1-1
Home Record in 2014-15	6-3
Away Record in 2014-15	0-2
Neutral Record in 2014-15	1-3

Head Coach	Kim Anderson (Missouri, '79, '81)
School Record	7-8 (First season)
Career Record	281-103 (13th season)

Mizzou's Latest Starting Lineup

	P/G	R/G	A/G	ST/G
G #14 Keith Shamburger (Sr., 5-11, 170)	9.1	3.2	3.1	1.1
G #15 Wes Clark (So., 6-0, 185)	9.4	3.6	2.7	1.7
G #12 Namon Wright (Fr., 6-5, 200)	5.4	2.1	0.7	0.6
F #23 Jakeenan Gant (Fr., 6-8, 207)	6.5	2.5	0.1	0.2
F #3 Johnathan Williams, III (So., 6-9, 225)	13.7	7.1	0.9	0.4

@KentuckyMBB

2014-15 Record	15-0
2014-15 SEC Record	2-0
Home Record in 2014-15	11-0
Away Record in 2014-15	2-0
Neutral Record in 2014-15	2-0

Head Coach	John Calipari (Clarion, '82)
School Record	164-37 (Sixth season)
Career Record	612-177 (22nd season)

Kentucky's Latest Starting Lineup

	P/G	R/G	A/G	ST/G
G #2 Aaron Harrison (So., 6-6, 212)	11.5	2.5	2.0	1.3
G #5 Andrew Harrison (So., 6-6, 210)	7.7	2.0	4.3	1.1
F #12 Karl-Anthony Towns (Fr., 6-11, 250)	8.5	6.7	1.0	0.3
F #15 Willie Cauley-Stein (Jr., 7-0, 240)	9.5	6.9	0.8	1.8
F #41 Trey Lyles (Fr., 6-10, 235)	7.9	5.7	1.7	0.6

TWEETABLE TIGER TRACKS...

- ▶ Mizzou Men's Basketball (7-8, 1-1) continues SEC action at No. 1 Kentucky (15-0, 2-0) on Tuesday, Jan. 13, live on ESPN at 8 p.m.
- ▶ The Tigers have been led by sophomore forward Johnathan Williams, III, who is currently averaging 13.7 points and 7.1 rebounds per game.
- ▶ Williams averaged just 5.8 points per game in 2013-14, but under head coach Kim Anderson, the Tiger's production has more than doubled.
- ▶ The Tigers were edged in their first SEC road trip, dropping an 85-79 game at Auburn (9-6, 1-1) on Jan. 10.
- ▶ Senior guard Keith Shamburger scored a season-best 21 points in the setback at Auburn, hitting 5 threes.
- ▶ Anderson picked up his first SEC win with the Tigers' 74-67 overtime win vs. LSU on Thursday, Jan. 8.
- ▶ Mizzou's freshman class has accounted for 38.4 percent of the team's minutes through 15 games.
- ▶ With the addition of sophomores, underclassmen have been playing 66.1 percent of the Tigers' minutes.
- ▶ 7 of Mizzou's top 8 scorers are underclassmen, with Shamburger (9.1) the only exception.
- ▶ Shamburger is fourth in the SEC in free throw shooting, hitting 88.6 percent (39-of-44).

TWO TIGERS TO KNOW...



3 • JOHNATHAN WILLIAMS, III • SO • F • 6-9
 - 10+ points in 12-of-15 games.
 - 6th career double-double (21, 10) vs. LSU to start SEC play.
 - Career-high 22 points vs. Okla. St.

14 • KEITH SHAMBURGER • SR • G • 5-11
 - 21 points at Auburn (Jan. 10), hitting 5-of-9 three-pointers.
 - Mizzou's minutes leader, averaging 34.1 per game (fifth in the SEC).

TEAM STATS...

Category	MIZ/NCAA Rk	UK/NCAA Rk
Field Goal Pct	42.8 222	45.4 81
Free Throw Pct	67.5 212	67.1 226
3-pt FG Pct	36.1 97	33.8 180
Effective FG Pct	49.3 174	50.6 115
True Shooting Pct	52.7 182	53.9 114
Points Per Poss.	1 222	1.14 17
Points	1003 245	1138 89
Points Per Game	66.9 200	75.9 34
Rebounds Per Game	34.3 201	42.2 5
Assists Per Game	10.7 296	16.5 17
Assist to Turnover	0.79 286	1.42 16
Steals Per Game	6.4 183	8 48
Turnovers Per Game	13.7 113	11.7 283
Blocks Per Game	3.1 216	8.3 1
Fouls Per Game	20.8 43	17.7 221

FOLLOW #MIZZOU...

ON TELEVISION: ESPN, 8:00 p.m. CT
 • Brad Nessler (Play-by-Play); Dick Vitale (Analyst); Shannon Spake (Reporter)
 Bo Garrett (Producer)



ON RADIO: Tiger Radio Network
 • Mike Kelly (Play-by-Play); Gary Link (Analyst); Matt Winegardner (Engineer)
 • Sirius (91); XM (91)

ONLINE: @MizzouHoops, MUTigers.com

2014-15 // SCHEDULE

Date	Opponent	TV	Score/Time (CT)
Nov. 14	UMKC !	SECN +	L, 69-61
Nov. 16	Valparaiso	SECN	W, 56-41
Nov. 19	Oral Roberts	SECN +	W, 78-64
Nov. 24	vs. #2 Arizona !	ESPN2	L, 72-53
Nov. 25	vs. Purdue !	ESPN2	L, 82-61
Nov. 26	vs. Chaminade !	ESPNU	W, 74-60
Dec. 2	SEMO	SECN +	W, 65-61
Dec. 5	at #22 Oklahoma	ESPNU	L, 82-63
Dec. 11	Elon	SECN	W, 78-73
Dec. 13	Xavier	ESPN2	L, 74-58
Dec. 20	vs. Illinois #	ESPN2	L, 62-59
Dec. 30	Oklahoma State %	ESPN2	L, 74-72 OT
Jan. 3	Lipscomb	SECN	W, 72-60
Jan. 8	LSU *	ESPN2	W, 74-67 OT
Jan. 10	at Auburn *	SECN	L, 85-79
Jan. 13	at #1 Kentucky *	ESPN	8 p.m.
Jan. 17	Tennessee *	SECN	5 p.m.
Jan. 21	at Texas A&M *	SECN	6 p.m.
Jan. 24	Arkansas *	ESPN/ESPN2	1 p.m.
Jan. 29	Kentucky *	ESPN	8 p.m.
Jan. 31	Ole Miss *	FSN	3 p.m.
Feb. 4	at Alabama *	SECN	8 p.m.
Feb. 7	Texas A&M *	ESPNU	5 p.m.
Feb. 10	at South Carolina *	SECN	6 p.m.
Feb. 14	Mississippi State *	ESPNU	3 p.m.
Feb. 18	at Arkansas *	SECN	8 p.m.
Feb. 21	at Vanderbilt *	SECN	1:30 p.m.
Feb. 24	Florida *	ESPN	8 p.m.
Feb. 28	at Georgia *	ESPNU	11 a.m.
March 3	Auburn *	SECN	8 p.m.
March 7	at Mississippi State *	SECN	5:30 p.m.
March 11	SEC Tournament ^		

Bold denotes home
 ! EA Sports Maui Invitational
 # Mizzou vs. Illinois at Scottrade Center, St. Louis, Mo.
 % Mizzou vs. Oklahoma State at Sprint Center, Kansas City, Mo.
 ^ SEC Tournament at Bridgestone Arena, Nashville, Tenn.
 * SEC Game
 All times central
 SEC Network + games can be found through the WatchESPN app

QUICK FACTS

Location _____ Columbia, Mo.
 Founded: _____ 1839
 Enrollment: _____ 34,658
 Nickname: _____ Tigers
 Colors: _____ Old Gold and Black
 Arena (Capacity): _____ Mizzou Arena (15,061)
 Conference: _____ Southeastern
 2013-14 Record: _____ 23-12
 SEC Record (Finish): _____ 9-9 (T-6th)
 Starters Returning / Lost: _____ 2/3
 Lettermen Returning / Lost: _____ 4/7

Mizzou Coaching Staff

Head Coach: _____ Kim Anderson (First Season)
 _____ University of Missouri, 1979 & 1981
 Missouri Record _____ 7-8 / .467 First Season
 Overall Record: _____ 281-103 / .732 (13th season)
 Associate Head Coach: _____ Tim Fuller (Fourth Season)
 Assistant Coaches: _____ Rob Fulford (First Season)
 _____ Brad Loos (First Season)
 Basketball Ops: _____ Bryan Tibaldi (Fourth Season)
 Student-Athlete Development: _____ Paul Rorvig
 _____ (First Season)
 Basketball Performance: _____ Matt Herring (First Season)
 Graduate Assistants: _____ Brett Anderson
 _____ John Poettgen

Mizzou Administration

President: _____ Tim Wolfe
 Phone: _____ 573-882-2011
 Chancellor: _____ R. Bowen Loftin
 Phone: _____ 573-882-3387
 Director of Athletics: _____ Mike Alden
 Department Phone: _____ 573-882-6501
 Ticket Office Phone: _____ 573-884-7297
 _____ 800-228-7297

Mizzou Strategic Communications

Associate Athletics Director: _____ Chad Moller
 Office Phone: _____ 573-882-0712
 E-Mail: _____ mollerc@missouri.edu
 Men's Basketball Contact: _____ Patrick Crawford
 Office Phone: _____ 573-882-2531
 E-Mail: _____ crawfordpa@missouri.edu
 Associate Director: _____ Kate Lakin
 Assistant Director: _____ Shawn Davis
 Assistant Director: _____ Jenny Dewar
 Intern: _____ Ali Fisher
 Intern: _____ Andy Oldenburg
 Web Coordinator: _____ Kevin Fletcher
 Media Relations Fax: _____ 573-882-4720
 Press Row Phone: _____ 573-882-1442
 Twitter: _____ @MizzouHoops
 Instagram: _____ @MizzouHoops
 Website: _____ mutigers.com

Pro-nun-SEE-A-shun Guide

Montaque Gill-Caesar _____ mon-TAKE
 Keanau Post _____ key-YAW-new
 Namon Wright _____ NAY-mun

LAST TIME OUT...

- ▶ Mizzou (7-8, 1-1) dropped a tightly contested battle at Auburn, 85-79, on Saturday, Jan. 10. The Tigers were led by the scoring efforts of senior guard Keith Shamburger, who poured in five three-pointers en route to 21 points.
- ▶ All nine players who saw the court for Mizzou at Auburn scored.
- ▶ Head coach Kim Anderson's squad outrebounded Auburn 40-31, the seventh time this season the Tigers led a game on the boards.
- ▶ Mizzou made 10-of-27 from three-point territory, the second time this season reaching double digits in three-pointers (12-of-21 vs. Oral Roberts, Nov. 19).
- ▶ Shamburger started the game by making two-straight three-pointers, his sixth game this season with multiple three-point makes.
- ▶ Sophomore guard Wes Clark matched his career-high with 16 points (6-of-14 FG, 2-of-6 3PT, 2-of-3 FT), while also recording five rebounds.

GAME 15



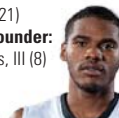
79



85

Date: Jan. 10, 2015
Location: Auburn Arena
 Auburn, Ala.
 8,365

Attendance:
High Mizzou Scorer:
 Keith Shamburger (21)
High Mizzou Rebounder:
 Johnathan Williams, III (8)



A LOOK AT THE OPPONENT... KENTUCKY

SCOUTING KENTUCKY WITH RANDOM MOVIE TITLES

'SCROOGED'	'I AM LEGEND'	'FIREWALL'	'THE EMPIRE STRIKES BACK'
Aaron Harrison	Dakari Johnson	Karl-Anthony Towns	Devin Booker
11.3 FG-A PER GAME	5.2 FTA PER GAME	2.3 BLOCKS PER GAME	2.1 3PTM PER GAME



- ▶ Top-ranked Kentucky (15-0, 2-0) enters the Mizzou game outscoring its opponents by an average of more than 24 points per game. However, the Wildcats' last three games have all been decided by less than 10 points.
- ▶ Louisville battled UK to a 58-50 result for head coach John Calipari's squad on Dec. 27. Two overtime wins followed for Kentucky, first with UK defeating Ole Miss by a 89-86 overtime score on Jan. 6. The Wildcats were taken to double overtime at Texas A&M, ultimately winning the contest 70-64.
- ▶ UK is led in scoring by sophomore guard Aaron Harrison's 11.5 points per game. He is joined in the double figures by freshman guard Devin Booker's 10.7 points per game.
- ▶ On the boards, Kentucky is led by junior forward Willie Cauley-Stein's 6.9 rebounds per game. Freshman forward Karl-Anthony Towns follows Cauley-Stein up with his 6.7 rebounds per game.
- ▶ Mizzou trails the all-time series vs. Kentucky, 6-0. The Tigers and Wildcats have met just twice as fellow conference members. Mizzou fell in overtime at Kentucky in 2013, 90-83, before last season's result.

LAST TIME



84



79

Date: Feb. 1, 2014
Location: Mizzou Arena
 Columbia, Mo.
 7,181

Attendance:
High Mizzou Scorer:
 Jabari Brown (33)
High Mizzou Rebounder:
 Earnest Ross (12)
High Kentucky Scorer:
 Aaron Harrison (21)
High Kentucky Rebounder:
 Julius Randle (9)

VOTE FOR COACH ANDERSON...

- ▶ Mizzou head coach Kim Anderson is competing with 47 other NCAA Division I men's basketball coaches for a great cause: a \$100,000 donation to charity. Anderson is representing Boys & Girls Clubs of Columbia, Missouri, in the Infiniti Coaches' Charity Challenge, which is a four-round contest driven by online fan voting.
- ▶ Mizzou fans and those wishing to support the Boys & Girls Clubs of Columbia, Missouri, can vote for Anderson at www.espn.com/infiniti.
- ▶ As an official corporate partner of the NCAA, Infiniti will make total donations throughout the competition of \$349,000. As coaches advance throughout the competition, donations totaling \$249,000 will be awarded to each of their charities of choice; the farther they advance, the more money the coaches raise. The final winning coach will receive a total of \$100,000 to benefit his charity of choice.
- ▶ The initial round runs from Jan. 5 - Jan. 25, with the second round of voting cutting the field to 24 coaches.

COACH ANDERSON NEEDS YOUR HELP
 HELP COACH A. RAISE MONEY FOR BOYS AND GIRLS CLUBS OF COLUMBIA, MO.
VOTE DAILY AT ESPN.COM/INFINITI

FASTBREAK FACTS...

THE NEW J3

▶ Sophomore forward **Johnathan Williams, III** has solidified himself as not only one of the most improved players in the Southeastern Conference in 2014-15, but also as one of the league's top scorers.

▶ Williams has **more than doubled his scoring average from his freshman season**, with his 13.7 points per game ranking tied for **13th** in the SEC.

▶ Williams notched back-to-back double-doubles, recording 21 points and 10 rebounds in the overtime victory over LSU (Jan. 3). **The effort was the sixth double-double of his career and third this season.** He also reached 16 points and 10 rebounds in Mizzou's win against Lipscomb (Jan. 3).

▶ Williams tied his career-best with eight field goal makes vs. LSU, while attempting a career-high 17 field goals.

▶ Williams also does his share of work on the boards, as his average of **7.1 rebounds per game is tied for sixth overall in the SEC.**

13.7 POINTS PER GAME IN 2014-15



CLARK, THE CLOSER

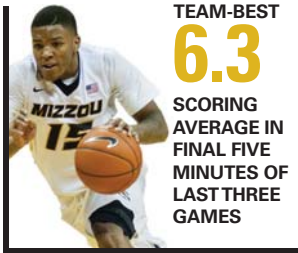
▶ Sophomore guard Wes Clark has posted **back-to-back games of double-figure scoring** with 13 points in the win vs. LSU (Jan. 8) and 16 points at Auburn (Jan. 10).

▶ Even more impressive? Clark's scoring outbursts come in the last five minutes of play. **Clark logged two late eight-point scoring streaks for Mizzou in both the LSU and Auburn games, respectively.**

▶ Clark's overall season average of **2.3 points in the final five minutes** trails Johnathan Williams, III's **3.1** average.

▶ However, **over the last three games, Clark has posted a team-best 6.3 points** in the final five minutes.

TEAM-BEST **6.3** SCORING AVERAGE IN FINAL FIVE MINUTES OF LAST THREE GAMES



#SHAMWOW

▶ Senior guard **Keith Shamburger** had his most impressive scoring performance as a Tiger with his 21 points at Auburn (Jan. 10), with the current graduate student hitting 5-of-9 three-pointers.

▶ The hot shooting from behind the arc powered Shamburger to **his 12th career 20-point game**, his first since scoring 20 in his final game at Hawaii (vs. Cal State Northridge, March 13, 2014).

▶ Shamburger's career-best scoring mark came back during the 2010-11 season, his freshman campaign at San Jose State. Shamburger scored 28 points vs. Idaho (March 20, 2011).

21 POINTS AT AUBURN, HIS MOST POINTS AS A TIGER **107** CAREER STARTS



YOUTH MOVEMENT

▶ Mizzou's underclassmen are seeing larger roles come their way as the season progresses, with the Tigers' freshmen and sophomores **now making up 66.1 percent of the minutes** played this season. The underclassmen have played 2016 of Mizzou's 3050 minutes.

▶ This is a significant change, as **last season's underclassmen accounted for 38.8 percent of the minutes** played by season's end.

▶ The Tigers' highly touted freshmen class has played a big part in the Tigers' game plans this season, **averaging 78.1 minutes per game** through head coach Kim Anderson's first 15 games leading the squad.

GOING AFTER THE NO. 1 TEAM

▶ Mizzou has four wins against the nation's No. 1 team in program history, with the most recent victory coming in 1997 against top-ranked Kansas.

▶ Head coach Kim Anderson was serving as an assistant coach on Gene Iba's staff at Baylor (1985-91) during Mizzou's stretch of three wins over No. 1-ranked teams in the two-year stretch from 1989-90.

▶ Anderson returned to Columbia in 1991 and was on the bench for the Tigers' thrilling double-overtime win over No. 1 Kansas in 1997.

▶ Mizzou is 4-16 all-time vs. No. 1-ranked teams.

WINS VS. NO. 1-RANKED TEAM BY MIZZOU

Game	Date	Leading Mizzou Scorer
#7 Mizzou vs. #1 Oklahoma, 97-84	Feb. 25, 1989	Byron Irvin, 34
#4 Mizzou vs. #1 Kansas, 95-87	Jan. 20, 1990	Anthony Peeler, 24
#2 Mizzou at #1 Kansas, 77-71	Feb. 13, 1990	Anthony Peeler, 22
Mizzou vs. #1 Kansas, 96-94 2OT	Feb. 4, 1997	Kelly Thames, 24

STOPPING THE MAIN TARGETS

▶ Mizzou's defensive effort against LSU's two leading scorers entering the Jan. 10 game, Jarell Martin and Jordan Mickey, was impressive. The LSU duo came into the contest averaging **34.5 points per game** and left Mizzou Arena combining for **18 points** (9 points each).

▶ In 2014-15, Mizzou has held its opponent's leading scorer below his season average **10 out of a possible 15 times.**

The Tigers have kept the team leader at least five points under his average **six times this season.**

OPPONENT LEADING SCORERS VS. MIZZOU	PLAYER	SCHOOL	AVG.	PTS.
	Martez Harrison	UMKC	17.2*	26
	Alec Peters	Valparaiso	12.7*	7
	Obi Emegano	Oral Roberts	19.0*	30
	R. Hollis-Jefferson	Arizona	16.0	15
	Kendall Stephens	Purdue	15.3	9
	Kiran Shastri	Chaminade	14.3	6
	Jarekious Bradley	SEMO	17.5	12
	Buddy Hield	Oklahoma	16.7	17
	Tanner Samson	Elon	13.8	10
	Trevon Bluiett	Xavier	14.7	8
	Raywonte Rice	Illinois	17.3	19
	Le'Bryan Nash	Oklahoma State	17.6	21
	Josh Williams	Lipscomb	14.6	11
	Jarell Martin	LSU	18.2	9
	KT Harrell	Auburn	17.2	14

*2013-14 average

BASICALLY A STARTER AT AUBURN

▶ Mizzou freshman guard **Tramaine Isabell** has slowly, but surely, shown he has the ability to impact games at a high level. His recent play was rewarded in the game at Auburn (Jan. 10), as the freshman logged a season-high 36 minutes off the bench.

▶ Over the last three games, **Isabell's minutes per game average has increased from 12.4 minutes to 15.9.**

▶ After scoring only as high as nine points through Mizzou's first 12 games of the season, **Isabell has reached double digits in two of the Tigers' last three games.** Isabell dropped in a season-best 14 points (4-of-8 FG, 1-of-3 3PT, 5-of-6 FT) in the win vs. Lipscomb (Jan. 3). He followed that up with 12 points (3-of-7 FG, 2-of-5 3PT, 4-of-4 FT) at Auburn (Jan. 10).

▶ Statistically speaking, Isabell has been one of Mizzou's most reliable free throw shooters. His current 85.0-percent clip (17-of-20) is only topped by senior guard **Keith Shamburger's** stout 88.6 mark (39-of-44).

▶ Isabell may certainly be most well known for his outstanding, buzzer-beating three-pointer at the end of regulation to force overtime with Oklahoma State (Dec. 30). The freshman **has made 11-of-36 three-point attempts** so far this season.

MORE FASTBREAK FACTS...

BEFORE AND AFTER

▶ Mizzou's sophomore duo of guard **Wes Clark** and forward **Johnathan Williams, III** played significant minutes as freshmen in 2013-14. In 2014-15 under the guidance of head coach Kim Anderson and staff, their production levels have risen tremendously.

▶ Through the non-conference schedule in 2013-14, Williams averaged **6.8 points (89) and 7.4 rebounds (96) per game**. Comparatively, the Tiger forward posted an outstanding **13.5 points per game in non-conference game**. His current rebounding average of 6.8 is overshadowed by his freshman season, especially with his 17 rebounds vs. Gardner-Webb (Nov. 23, 2013) and 15 rebounds vs. UCLA (Dec. 7, 2013) factored into the average.

▶ Clark additionally elevated his game as a sophomore with his **8.6 points and 3.3 rebounds per game**. He posted averages of **5.2 points (67) and 2.2 rebounds (29)** through last season's non-conference schedule.

POST UP, MR. POST

▶ After not appearing in Mizzou's games vs. Illinois and Oklahoma State, senior forward **Keanau Post** provided a huge interior presence in Mizzou's wins vs. Lipscomb (Jan. 3) and vs. LSU (Jan. 8).

▶ Post was crucial for Mizzou in the overtime win vs. LSU, scoring 12 points (6-of-10 FG), which included three thunderous dunks. The Canadian also snagged seven rebounds and recorded a career-high three blocks.

▶ Post helped lead the Tigers to victory vs. Lipscomb, scoring seven points and grabbing 10 boards in 14 minutes of action off the bench. The 10 boards are a career-high for the Tiger big man.



WHAT COACHA SAID...

...after the LSU win (Jan. 8): "I'm just happy for (Post). He had a tough year last year, and he's had a tough go here early on. Now, he's had some success. That's why you do this. You give the guy a chance."

DEEP THREAT

▶ Mizzou has made **103-of-285** three-point attempts thus far in the 2014-15 season, compiling a success rate of **36.1** percent that **ranks fourth-best in the Southeastern Conference**.

▶ Head coach Kim Anderson's squad also **ranks fourth in the conference with its 103 three-pointers, overall**.

▶ The Tigers' most prolific three-point shooting game this season came against Oral Roberts (Nov. 19), a game in which head coach Kim Anderson's squad rained in **12-of-21** triples (.571). The surge of deep balls helped Mizzou to a 78-64 victory.

▶ Mizzou has shot better than 50 percent from three-point territory two other times, hitting 53.3 percent vs. SEMO on Dec. 2 (8-of-15) and at No. 22 Oklahoma on Dec. 5 (9-of-16).

▶ The Tigers reached double digits in triples for the second time this season with its **10-of-27** performance (.370) in the narrow setback at Auburn (Jan. 10).

THE CENTURY CLUB

▶ Senior point guard **Keith Shamburger** started his 100th college game in Mizzou's 65-61 win vs. Southeast Missouri (Dec. 2). The well-traveled senior is in graduate school at the University of Missouri for his final season of eligibility.

▶ Shamburger has been a steady presence in the Tigers' starting lineup, averaging 9.1 points, 3.1 assists and 3.2 rebounds in a **team-high 34.1 minutes per game over 15 starts**. That mark ranks **fifth-best in the SEC**.

MIZZOU PLAYERS, QUICK STATS & NOTES

2 • DEUCE BELLO • 6-4 • 198 • G • JR

Greensboro, N.C. (Westchester Country Day/Baylor) Full name: Quddus Tosin Bello First name is pronounced kuh-Deuce
Major: General Studies Born: Sept. 19, 1992, in New Brunswick, N.J. Goes by the name "Deuce"



2014-15 HIGH	PTS	FGM	FGA	3-PTM	3-PTA	FTM	FTA	REB	ASST	BLKS	STL			
8	3	5	1	2	2	4	4	2	2	2	2			
VS. PURDUE 11-25-14	TWICE	ORAL ROBERTS 11-19-14	4 TIMES	TWICE	VS. PURDUE 11-25-14	VS. PURDUE 11-25-14	5 TIMES	TWICE	ORAL ROBERTS 11-19-14	XAVIER 12-13-14				
CAREER HIGH	13	4	8	1	2	5	8	7	3	2	3			
MISSOURI 3-10-12	4 TIMES	S. CAROLINA ST. 11-22-11	9 TIMES	4 TIMES	MISSOURI 3-10-12	MISSOURI 3-10-12	JACKSON ST. 11-13-11	HARDIN-SIMMONS 1-19-13	TWICE	N'WESTERN 12-4-12				
CAREER	G-GS	MIN	MPG	FG-A	FG%	3FG-A	3FG%	FT-A	FT%	REB / AVG.	AST / TO	BS / S	TP	AVG.
2011-12*	30-0	310	10.3	34-71	.479	3-16	.188	28-50	.560	58 / 1.9	11 / 26	7 / 16	99	3.3
2012-13*	36-0	391	10.9	34-75	.453	2-9	.222	15-35	.429	52 / 1.4	21 / 30	10 / 20	85	2.4
2013-14	DNP-Redshirt (Transfer)													
2014-15	11-0	118	10.7	13-20	.650	4-7	.571	2-10	.200	14 / 1.3	2 / 10	3 / 4	32	2.9
TOTAL	77-0	819	10.6	81-166	.488	9-32	.281	45-95	.474	124 / 1.6	35 / 66	20 / 40	216	2.8

LAST GAME: Did not appear at Auburn (Jan. 10).

- Sat out the season as a transfer from Baylor and will be classified as a redshirt junior.
- Practiced with Mizzou while also recuperating from a shin injury, which he suffered during his sophomore season.
- Played in 36 games for Baylor as a sophomore (2012-13) and averaged 2.4 points and 1.4 rebounds in 10.9 minutes per game.
- Appeared in 30 games as a reserve guard as a freshman for Baylor in 2011-12.
- Four-year letterwinner for head coach Pat Khany at Westchester Country Day School in High Point, N.C.

3 • JOHNATHAN WILLIAMS, III • 6-9 • 225 • F • SO

Memphis, Tenn. (Southwind HS) Full name: Johnathan Lee Williams
Major: Pre-Health Professions Born: May 22, 1995, in Memphis



2014-15 HIGH	PTS	FGM	FGA	3-PTM	3-PTA	FTM	FTA	REB	ASST	BLKS	STL			
22	8	17	2	3	9	14	11	3	4	4	2			
OKLAHOMA ST. 12-30-14	TWICE	LSU 1-8-15	TWICE	4 TIMES	ELON 12-11-14	SEMO 12-2-14	SEMO 12-2-14	TWICE	UMKC 11-14-14	AT OKLAHOMA 12-5-14				
CAREER HIGH	22	8	17	2	3	9	14	17	4	5	2			
OKLAHOMA ST. 12-30-14	TWICE	LSU 1-8-15	TWICE	4 TIMES	ELON 12-11-14	SEMO 12-2-14	GARDNER-WEBB 11-23-13	TEXAS A&M 3-13-14	TEXAS A&M 3-5-14	4 TIMES				
Season	G-GS	MIN	MPG	FG-A	FG%	3FG-A	3FG%	FT-A	FT%	REB / AVG.	AST / TO	BS / S	TP	AVG.
2013-14	35-35	922	26.3	74-163	.454	4-11	.364	52-92	.565	227 / 6.5	24 / 38	57 / 14	204	5.8
2014-15	15-15	430	28.7	68-142	.479	8-26	.308	61-95	.642	107 / 7.1	14 / 42	10 / 6	205	13.7
TOTAL	50-50	1352	27.0	142-305	.466	12-37	.324	113-187	.604	334 / 6.7	38 / 80	67 / 20	409	8.2

LAST GAME: Streak of scoring at least 15 points halted at Auburn (Jan. 10), scoring 9 points (4-of-9 FG, 0-of-2 3PT, 1-of-2 FT) and grabbing 8 rebounds.

- 6th double-double of his career with 21 points (8-of-17 FG, 0-of-1 3PT, 5-of-8 FT) and 10 rebounds vs. LSU (Jan. 8), his 8th-straight with at least 15 points.
- Career-high 22 points (8-of-13 FG, 2-of-3 3PT, 4-of-7 FT) in the overtime game vs. Oklahoma State (Dec. 30).
- Fourth double-double of his career with 18 points (5-of-9 FG, 8-of-14 FT), as well as 11 rebounds, 1 assist and 1 block in 33 min. vs. SEMO (Dec. 2).
- Finished 11th in the league overall in rebounding and his 227 total rebounds were No. 4 in school history by a freshman.
- His 57 total blocks were the second highest ever by a Tiger freshman (65 by Arthur Johnson) and is the fifth highest in program history regardless of class.
- Earned first team all-state honors from the Tennessee Sports Writers Association as a senior for Southwind High School in 2013.

4 • TRAMAINE ISABELL • 6-0 • 180 • G • FR

Seattle, Wash. (Garfield HS) Full name: Tramaine Andre' Isabell
Major: Undecided Born: June 27, 1995



2014-15 HIGH	PTS	FGM	FGA	3-PTM	3-PTA	FTM	FTA	REB	ASST	BLKS	STL			
14	4	8	2	5	5	6	4	6	6	-	2			
LIPSCOMB 1-3-15	TWICE	LIPSCOMB 1-3-15	TWICE	TWICE	LIPSCOMB 1-3-15	LIPSCOMB 1-3-15	TWICE	LSU 1-8-15	-	-	4 TIMES			
CAREER HIGH	-	-	-	-	-	-	-	-	-	-	-			
Season	G-GS	MIN	MPG	FG-A	FG%	3FG-A	3FG%	FT-A	FT%	REB / AVG.	AST / TO	BS / S	TP	AVG.
2014-15	15-0	238	15.9	26-75	.347	11-36	.306	17-20	.850	18 / 1.2	24 / 16	0 / 11	80	5.3
TOTAL	15-0	238	15.9	26-75	.347	11-36	.306	17-20	.850	18 / 1.2	24 / 16	0 / 11	80	5.3

LAST GAME: Season-high 36 minutes off the bench at Auburn (Jan. 10), scoring 12 points (3-of-7 FG, 2-of-5 3PT, 4-of-4 FT) and recording 4 assists.

- Season-best 14 points (4-of-8 FG, 1-of-3 3PT, 5-of-6 FT) vs. Lipscomb (Jan. 3), setting a season-high in FG attempts, as well as FT makes and attempts.
- Made ESPN SportsCenter's Top 10 with his buzzer-beating, game-tying 3-pointer vs. Oklahoma State (Dec. 30), dropping the bucket with 0.2 seconds left in regulation.
- Was named first team all-state as a senior after leading Garfield High School to a 25-1 overall record and the Washington Class 4A state championship.
- Averaged 23.6 points and 3.5 assists as a senior for Garfield, which also produced NBA players Tony Wroten and Brandon Roy.
- Was named all-metro and all-King County as a senior and won the Class 4A Regional Sportsmanship Award.
- Began his high school career at Lakeside High School, the same high school as Microsoft co-founders Bill Gates and Paul Allen.

5 • D'ANGELO ALLEN • 6-7 • 220 • F • FR

Dallas, Texas (Kimball HS) Full name: D'Angelo Malik Allen
Intended Major: Sport Management Born: May 10, 1996, in Dallas, Texas



2014-15 HIGH	PTS	FGM	FGA	3-PTM	3-PTA	FTM	FTA	REB	ASST	BLKS	STL			
12	5	7	2	2	3	4	7	2	1	1	2			
ELON 12-11-14	ELON 12-11-14	ELON 12-11-14	VS. ILLINOIS 12-20-14	VS. ILLINOIS 12-20-14	LIPSCOMB 1-3-15	LIPSCOMB 1-3-15	ELON 12-11-14	AT OKLAHOMA 12-5-14	4 TIMES	SEMO 12-2-14				
CAREER HIGH	-	-	-	-	-	-	-	-	-	-	-			
Season	G-GS	MIN	MPG	FG-A	FG%	3FG-A	3FG%	FT-A	FT%	REB / AVG.	AST / TO	BS / S	TP	AVG.
2014-15	15-0	249	16.6	26-54	.481	3-8	.375	9-15	.600	52 / 3.5	10 / 11	4 / 6	64	4.3
TOTAL	15-0	249	16.6	26-54	.481	3-8	.375	9-15	.600	52 / 3.5	10 / 11	4 / 6	64	4.3

LAST GAME: 5 points (2-of-6 FG, 0-of-1 3PT, 1-of-1 FT) in 23 minutes off the bench at Auburn (Jan. 10), also snagging 5 rebounds.

- 4 points (2-of-3 FG) in the game vs. Oklahoma State (Dec. 30), battling through an ankle injury to give 16 minutes off the bench, also grabbing 5 rebounds.
- 8 points (3-of-4 FG, 2-of-2 3PT) vs. Illinois (Dec. 20) in the Scottrade Center, draining 2 three-pointers during his 20 minutes off the bench.
- Breakout game vs. Elon (Dec. 11), scoring 12 points (5-of-7 FG, 2-of-2 FT) and grabbing 7 rebounds in 21 minutes of action off the bench.
- Was a winner throughout his high school career and was a part of three Texas Class 4A State Championship teams (2011, 2012 and 2014) at Kimball High.
- Averaged 13.3 points and 10.2 rebounds as a senior and broke the Kimball career starts record, which was previously held by Acie Law IV.
- Named to the Texas Association of Basketball Coaches All-Star Team in 2014.

MIZZOU PLAYERS, QUICK STATS & NOTES

11 • JIMMY BARTON • 5-9 • 160 • G • SO

St. Louis, Mo. (De Smet Jesuit/Houston Baptist) Full name: James Edward Barton
 Born: Oct. 7, 1994, in St. Louis, Mo.



2014-15 HIGH	PTS	FGM	FGA	3-PTM	3-PTA	FTM	FTA	REB	ASST	BLKS	STL			
9	3	8	3	3	2	2	3	8	-	3				
<i>SOUTHERN MISS</i> 11-23-13	<i>5 TIMES</i>	<i>INCARNATE WORD</i> 2-8-14	<i>SOUTHERN MISS</i> 11-23-13	<i>8 TIMES</i>	<i>5 TIMES</i>	<i>7 TIMES</i>	<i>TWICE</i>	<i>ABILENE CHRISTIAN</i> 2-6-14		<i>STEPHEN F. AUSTIN</i> 11/9/14				
CAREER HIGH	PTS	FGM	FGA	3-PTM	3-PTA	FTM	FTA	REB	ASST	BLKS	STL			
9	3	8	3	3	2	2	3	8	-	3				
<i>SOUTHERN MISS</i> 11-23-13	<i>5 TIMES</i>	<i>INCARNATE WORD</i> 2-8-14	<i>SOUTHERN MISS</i> 11-23-13	<i>8 TIMES</i>	<i>5 TIMES</i>	<i>7 TIMES</i>	<i>TWICE</i>	<i>ABILENE CHRISTIAN</i> 2-6-14		<i>STEPHEN F. AUSTIN</i> 11/9/14				
CAREER	G-GS	MIN	MPG	FG-A	FG%	3FG-A	3FG%	FT-A	FT%	REB / AVG.	AST / TO	BS / S	TP	AVG.
2013-14*	31-13	515	16.6	34-98	.347	14-50	.280	12-16	.750	35 / 1.1	57 / 43	0 / 15	94	3.0
2014-15	-	-	-	-	-	-	-	-	-	-	-	-	-	-
TOTAL	31-13	515	16.6	34-98	.347	14-50	.280	12-16	.750	35 / 1.1	57 / 43	0 / 15	94	3.0

LAST GAME: Sitting out the 2014-15 season after transferring to Mizzou from Houston Baptist.
 • Played in 31 games for Houston Baptist as a true freshman in 2013-14, making 13 starts.
 • Averaged 3.0 points and 1.8 assists in 16.6 minutes per contest.
 • Was a four-year letterwinner and three-year team captain for coach Kevin Poelker at De Smet Jesuit High School in St. Louis, Mo.
 • Earned Metro Catholic Conference Co-Player of the Year, first-team all-state and second-team All-Metro honors as a senior.

12 • NAMON WRIGHT • 6-5 • 200 • G • FR

Los Angeles, Calif. (Pacific Hills) Full name: Namon Khary Wright
 Major: Undecided Born: June 25, 1994, in Los Angeles, Calif.



2014-15 HIGH	PTS	FGM	FGA	3-PTM	3-PTA	FTM	FTA	REB	ASST	BLKS	STL			
21	7	9	4	4	3	4	6	2	1	2				
<i>VS. CHAMINADE</i> 11-26-14	<i>VS. CHAMINADE</i> 11-26-14	<i>LSU</i> 1-8-15	<i>VS. CHAMINADE</i> 11-26-14	<i>3 TIMES</i>	<i>VS. CHAMINADE</i> 11-26-14	<i>VS. CHAMINADE</i> 11-26-14	<i>VS. CHAMINADE</i> 11-26-14	<i>TWICE</i>	<i>TWICE</i>	<i>TWICE</i>				
CAREER HIGH	PTS	FGM	FGA	3-PTM	3-PTA	FTM	FTA	REB	ASST	BLKS	STL			
-	-	-	-	-	-	-	-	-	-	-				
Season	G-GS	MIN	MPG	FG-A	FG%	3FG-A	3FG%	FT-A	FT%	REB / AVG.	AST / TO	BS / S	TP	AVG.
2014-15	15-6	238	15.9	30-65	.462	18-38	.474	3-6	.500	31 / 2.1	10 / 14	2 / 9	81	5.4
TOTAL	15-6	238	15.9	30-65	.462	18-38	.474	3-6	.500	31 / 2.1	10 / 14	2 / 9	81	5.4

LAST GAME: Sixth start of the season in the game at Auburn (Jan. 10), playing 10 minutes and scoring 3 points (1-of-4 FG, 1-of-3 3PT) and recording 2 steals.
 • 21 points off the bench on perfect 7-of-7 FG (4-of-4 3PT) shooting in the win vs. Chaminaide in Maui (Nov. 26), hitting 3-of-4 FT and grabbing 6 rebounds.
 • Was selected to participate in the 2014 BallisLife.com All-America Game in Long Beach Calif., after the completion of his senior season.
 • Averaged 24.2 points, 9.4 rebounds, 3.0 assists and 1.4 steals for Pacific Hills High School in 2014.
 • Was one of California's more prolific scorers as a senior, dropping in 42 points in a game against Compton and 40 vs. Long Beach Millikan.
 • Helped lead Pacific Hills to the Division IV state championship as a junior and averaged 15.6 points, 7.3 rebounds and 3.1 assists for the balanced squad.

13 • MONTAQUE GILL-CAESAR • 6-6 • 215 • G • FR

Vaughan, Ontario (Huntington Prep [W. Va.]) Born: Jan. 31, 1996, in Vaughan, Ontario
 Major: Undecided Goes by "Teki", pronounced like "Techie"



2014-15 HIGH	PTS	FGM	FGA	3-PTM	3-PTA	FTM	FTA	REB	ASST	BLKS	STL			
21	9	23	4	8	7	12	7	1	1	3				
<i>UMKC</i> 11-14-14	<i>UMKC</i> 11-14-14	<i>UMKC</i> 11-14-14	<i>TWICE</i>	<i>VS. CHAMINADE</i> 11-26-14	<i>VS. ARIZONA</i> 11-24-14	<i>VS. ARIZONA</i> 11-24-14	<i>UMKC</i> 11-14-14	<i>4 TIMES</i>	<i>TWICE</i>	<i>VS. CHAMINADE</i> 11-26-14				
CAREER HIGH	PTS	FGM	FGA	3-PTM	3-PTA	FTM	FTA	REB	ASST	BLKS	STL			
-	-	-	-	-	-	-	-	-	-	-				
Season	G-GS	MIN	MPG	FG-A	FG%	3FG-A	3FG%	FT-A	FT%	REB / AVG.	AST / TO	BS / S	TP	AVG.
2014-15	13-13	352	27.1	47-130	.362	19-53	.358	36-44	.818	48 / 3.7	5 / 23	2 / 11	149	11.5
TOTAL	13-13	352	27.1	47-130	.362	19-53	.358	36-44	.818	48 / 3.7	5 / 23	2 / 11	149	11.5

LAST GAME: Did not appear in the Auburn game (Jan. 10) due to a lingering back injury from the Illinois (Dec. 20) game.
 • Double figures in scoring in 8 of Mizzou's 13 games thus far.
 • 15 points (3-of-8 FG, 2-of-5 3PT, 7-of-8 FT) in the OT game vs. Oklahoma State (Dec. 30), returning to double-figure scoring after 2 games in single digits.
 • 21 points (9-for-23 FG, 1-for-6 3PT) in the first game of his collegiate career vs. UMKC (Nov. 14), also a team-best 7 rebounds.
 • Was ranked a consensus Top 50 recruit in the Class of 2015 before reclassifying to 2014 and signing with Missouri on Aug. 2, 2014.
 • Was named the 2014 Gatorade Player of the Year in West Virginia as a junior at Huntington Prep High School.
 • Averaged 16.1 points, 6.5 rebounds, 2.0 assists and 1.7 steals for Huntington Prep in 2013-14, helping the club to a 28-5 overall record and a No. 5 national ranking.
 • Was a star for Team Canada in the 2014 FIBA Americas U18 Championship, as he finished second among all players at the tournament in scoring (19.6 ppg).

14 • KEITH SHAMBURGER • 5-11 • 170 • G • SR

Los Angeles, Calif. (Junipero Serra/Hawaii) Born in Los Angeles, Calif.
 Major: Master of education in educational, school and counseling psychology



2014-15 HIGH	PTS	FGM	FGA	3-PTM	3-PTA	FTM	FTA	REB	ASST	BLKS	STL			
21	6	12	5	9	9	9	6	5	1	4				
<i>AT AUBURN</i> 1-10-15	<i>LIPSCOMB</i> 1-3-15	<i>AT AUBURN</i> 1-10-15	<i>AT AUBURN</i> 1-10-15	<i>AT AUBURN</i> 1-10-15	<i>AT AUBURN</i> 1-10-15	<i>ELON</i> 12-11-14	<i>ELON</i> 12-11-14	<i>TWICE</i>	<i>3 TIMES</i>	<i>3 TIMES</i>	<i>ORAL ROBERTS</i> 11-19-14			
CAREER HIGH	PTS	FGM	FGA	3-PTM	3-PTA	FTM	FTA	REB	ASST	BLKS	STL			
28	9	18	6	11	14	16	7	12	2	5				
<i>IDAHO</i> 3-10-11	<i>TWICE</i>	<i>TWICE</i>	<i>IDAHO</i> 3-10-11	<i>COPPIN STATE</i> 12-29-11	<i>CS FULLERTON</i> 3-8-14	<i>CS FULLERTON</i> 3-8-14	<i>3 TIMES</i>	<i>AT HAWAII</i> 1-8-12	<i>AT SEATTLE</i> 12-18-10	<i>NEVADA</i> 3-8-12				
Season	G-GS	MIN	MPG	FG-A	FG%	3FG-A	3FG%	FT-A	FT%	REB / AVG.	AST / TO	BS / S	TP	AVG.
2010-11*	33-33	1034	31.3	130-362	.359	57-180	.317	91-121	.752	124 / 3.8	80 / 42	5 / 30	408	12.4
2011-12*	30-30	1056	35.2	114-338	.337	51-168	.304	115-149	.772	86 / 2.9	155 / 63	1 / 40	394	13.1
2012-13	-	-	-	-	-	-	-	-	-	-	-	-	-	-
2013-14*	31-30	1000	32.3	75-215	.349	40-130	.308	99-119	.832	94 / 3.0	166 / 62	2 / 33	289	9.3
2014-15	15-15	512	34.1	38-88	.432	22-57	.386	39-44	.886	48 / 3.2	47 / 33	3 / 16	137	9.1
TOTAL	109-108	3602	33.0	357-1003	.356	170-535	.318	344-433	.794	352 / 3.2	448 / 200	11 / 119	1228	11.3

LAST GAME: Best scoring performance as a Tiger with 21 points (5-of-12 FG, 5-of-9 3PT, 6-of-7 FT) at Auburn (Jan. 10), also recording 6 rebounds and 2 assists.
 • 15 points (6-of-9 FG, 3-of-5 3PT) in the win vs. Lipscomb (Jan. 3), his second-best scoring outing while wearing the Black & Gold.
 • Season-best 16 points (3-of-6 FG, 1-of-3 3PT, 9-of-9 FT) in the 78-73 win vs. Elon (Dec. 11), a team-best game at the FT line over 36 minutes of action.
 • Started 30 of 31 games at point guard for Hawaii in 2013-14, leading the team in assists (5.4) and free throw percentage (.832).
 • Led the Big West Conference in assists per game as well, and was second in both free throw percentage and assist/turnover ratio (2.7).

MIZZOU PLAYERS, QUICK STATS & NOTES

15 • WES CLARK • 6-0 • 185 • G • SO

Detroit, Mich. (Romulus HS)
Major: Undecided

Full name: Wesley Lavert Clark
Born: Dec. 12, 1994, in Detroit, Mich.



2014-15 HIGH	PTS	FGM	FGA	3-PTM	3-PTA	FTM	FTA	REB	ASST	BLKS	STL			
16	6	6	14	3	6	6	8	9	9	1	6			
TWICE	AT AUBURN	AT AUBURN	TWICE	ORAL ROBERTS	TWICE	TWICE	OKLAHOMA ST.	VS. CHAMINADE	ORAL ROBERTS	3 TIMES	UMKC			
	1-10-15	1-10-15		11-19-14			12-30-14	11-26-14	11-19-14		11-14-14			
CAREER HIGH	16	6	14	3	6	6	8	9	9	1	6			
	TWICE	AT AUBURN	TWICE	TWICE	TWICE	TWICE	3 TIMES	VS. CHAMINADE	ORAL ROBERTS	5 TIMES	UMKC			
	1-10-15	1-10-15						11-26-14	11-19-14		11-14-14			
CAREER	G-GS	MIN	MPG	FG-A	FG%	3FG-A	3FG%	FT-A	FT%	REB / AVG.	AST / TO	BS / S	TP	AVG.
2013-14	33-0	672	20.4	42-117	.359	21-57	.368	31-49	.633	72 / 2.2	70 / 53	2 / 26	136	4.1
2014-15	14-11	415	29.6	44-127	.346	17-52	.327	27-34	.794	50 / 3.6	41 / 27	3 / 25	132	9.4
TOTAL	47-11	1087	23.1	86-244	.352	38-109	.349	58-83	.699	122 / 2.6	111 / 80	5 / 51	268	5.7

LAST GAME: Tried career-best with 16 points (6-of-14 FG, 2-of-6 3PT, 2-of-3 FT) at Auburn (Jan. 10), with a career-high 6 FG makes, as well as 5 rebounds.
 • 13 points (4-of-12 FG, 3-of-8 3PT, 2-of-2 FT) vs. LSU (Jan. 8), along with 3 steals and 5 rebounds.
 • 12 points (3-of-8 FG, 0-of-3 3PT, 6-of-8 FT) in a career-high 36 minutes vs. Oklahoma State (Dec. 30), also recording 2 steals.
 • 16 points (4-for-8 FG, 2-for-3 3PT) in the 56-41 win vs. Valparaiso (Nov. 16), also controlling 6 rebounds and recording 2 assists and 2 steals.
 • Averaged 4.1 points, 2.2 rebounds and 2.1 assists in 20.4 minutes per game as a freshman in 2013-14, playing in 33 contests.
 • Was named first team all-state each of his final two years as a prep, averaging 12.8 points, 4.0 rebounds and 6.5 assists during his senior season.

23 • JAKEENAN GANT • 6-8 • 207 • F • FR

Springfield, Ga. (Effingham County)
Major: Undecided

Full name: Jakeenan Tyelle Gant
Born: May 6, 1996, in Savannah, Ga.



2014-15 HIGH	PTS	FGM	FGA	3-PTM	3-PTA	FTM	FTA	REB	ASST	BLKS	STL			
13	4	8	1	4	4	4	4	4	1	2	1			
XAVIER	XAVIER	XAVIER	XAVIER	XAVIER	XAVIER	XAVIER	XAVIER	TWICE	LIPSCOMB	XAVIER	TWICE			
12-13-14	12-13-14	12-13-14	12-13-14	12-13-14	12-13-14	12-13-14	12-13-14		1-3-15	12-13-14				
CAREER HIGH	-	-	-	-	-	-	-	-	-	-	-			
Season	G-GS	MIN	MPG	FG-A	FG%	3FG-A	3FG%	FT-A	FT%	REB / AVG.	AST / TO	BS / S	TP	AVG.
2014-15	6-4	94	15.7	16-28	.571	1-8	.125	6-9	.667	15 / 2.5	1 / 3	4 / 3	39	6.5
TOTAL	6-4	94	15.7	16-28	.571	1-8	.125	6-9	.667	15 / 2.5	1 / 3	4 / 3	39	6.5

LAST GAME: Fourth start of the season at Auburn (Jan. 10), scoring 6 points (3-of-4 FG) in 15 minutes, and also grabbing four rebounds.
 • 13 points (4-of-8 FG, 1-of-4 3PT, 4-of-4 FT) in 15 minutes off the bench vs. Xavier (Dec. 13), the first action of his collegiate career.
 • Did not appear in the first nine games of the 2014-15 season during a review of his eligibility by the University of Missouri.
 • One of the premier players in the class of 2014 and was selected to participate in USA Basketball's U18 National Team training camp in Colorado Springs, Colo.
 • Was named Mr. Basketball in the state of Georgia as a senior in 2014, and was also named the Georgia Class 5A Player of the Year as a junior in 2013.
 • Averaged 21.0 points, 10.5 rebounds, 4.0 blocks and 2.8 assists for the Effingham County Rebels as a senior, helping his club to a 20-10 overall record.

42 • HAYDEN BARNARD • 6-10 • 225 • F • RSFR

Aurora, Ill. (Metea Valley HS)
Major: Finance

Full name: Hayden Kirk Barnard
Born: Jan. 13, 1995, in St. Louis, Mo.



2014-15 HIGH	PTS	FGM	FGA	3-PTM	3-PTA	FTM	FTA	REB	ASST	BLKS	STL			
-	-	-	-	-	-	-	-	-	-	-	-			
CAREER HIGH	-	-	-	-	-	-	-	-	-	-	-			
Season	G-GS	MIN	MPG	FG-A	FG%	3FG-A	3FG%	FT-A	FT%	REB / AVG.	AST / TO	BS / S	TP	AVG.
2014-15	-	-	-	-	-	-	-	-	-	-	-	-	-	-
TOTAL	-	-	-	-	-	-	-	-	-	-	-	-	-	-

LAST GAME: Did not appear at Auburn (Jan. 10).
 • Redshirted the 2013-14 season and worked heavily with the Tiger strength and conditioning staff.
 • Used his 6-foot-10 frame to add depth in the post during practice.
 • Averaged 7.0 points and 5.0 rebounds for Metea Valley High School in Aurora, Ill., as a senior to help the Mustangs (19-10) to a conference runner-up finish.
 • Parents, Pam and Jim Barnard, are both graduates of Mizzou.
 • Would like to work on Wall Street after his playing career.

44 • RYAN ROSBURG • 6-10 • 264 • F • JR

Chesterfield, Mo. (Marquette HS)
Major: Marketing



2014-15 HIGH	PTS	FGM	FGA	3-PTM	3-PTA	FTM	FTA	REB	ASST	BLKS	STL			
9	4	5	-	-	2	7	8	2	2	2	2			
VS. CHAMINADE	VS. CHAMINADE	TWICE	-	-	VALPO	VS. CHAMINADE	VALPO	SEMO	TWICE	OKLAHOMA STATE				
11-26-14	11-26-14				11-15-14	11-26-14	11-16-14	12-2-14		12-30-14				
CAREER HIGH	14	5	7	-	-	4	7	12	2	2	2			
N'WESTERN	TWICE	AT OLE MISS	-	-	TWICE	VS. CHAMINADE	AT GEORGIA	5 TIMES	7 TIMES	3 TIMES				
11-28-13		2-8-14				11-26-14	2-25-14							
Season	G-GS	MIN	MPG	FG-A	FG%	3FG-A	3FG%	FT-A	FT%	REB / AVG.	AST / TO	BS / S	TP	AVG.
2012-13	31-0	213	6.9	11-27	.407	0-0	.000	8-14	.571	41 / 1.3	7 / 6	6 / 1	30	1.0
2013-14	35-32	778	22.2	68-95	.716	0-0	.000	33-58	.569	145 / 4.1	10 / 41	22 / 7	169	4.8
2014-15	15-11	263	17.5	18-41	.439	0-0	.000	5-27	.185	51 / 3.4	6 / 10	11 / 3	41	2.7
TOTAL	81-43	1254	15.5	97-163	.595	0-0	.000	46-99	.465	237 / 2.9	23 / 57	39 / 11	240	3.0

LAST GAME: 16 minutes of action off the bench at Auburn (Jan. 10), scoring 3 points (1-of-3 FG, 1-of-2 FT) and recording 1 rebound and 2 blocks to match a career-best.
 • Played in all 35 games as a sophomore in 2013-14, making 32 starts.
 • Averaged 4.8 points and 4.1 rebounds while shooting an incredibly efficient 71.6 percent from the floor
 • One of Missouri's top players his final two seasons of high school and twice earned all-state honors.
 • Was named the Suburban West Conference Player of the Year as a senior, averaging 19.7 points and 10.7 rebounds
 • Has one brother, Andy, who played at Mizzou in 2011-12.

MIZZOU PLAYERS, QUICK STATS & NOTES

45 • KEANAU POST • 6-11 • 270 • F • SR

Victoria, British Columbia (Oak Bay /Southwestern Illinois CC)
Major: General Studies

Full name: Keanau Dennis Post
Born: Sept. 4, 1992, in Victoria, British Columbia



2014-15 HIGH	PTS 12 <i>LSU 1-8-15</i>	FGM 6 <i>LSU 1-8-15</i>	FGA 10 <i>LSU 1-8-15</i>	3-PTM -	3-PTA -	FTM 4 <i>VS. ARIZONA 11-24-14</i>	FTA 5 <i>ORAL ROBERTS 11-19-14</i>	REB 10 <i>LIPSCOMB 1-3-15</i>	ASST 1 <i>VS. ARIZONA 11-24-14</i>	BLKS 3 <i>LSU 1-8-15</i>	STL 1 <i>TWICE</i>			
CAREER HIGH	14 <i>MISS. STATE 3-1-14</i>	6 <i>TWICE</i>	10 <i>LSU 1-8-15</i>	-	-	4 <i>VS. ARIZONA 11-24-14</i>	5 <i>TWICE</i>	10 <i>LIPSCOMB 1-3-15</i>	1 <i>VS. ARIZONA 11-24-14</i>	3 <i>LSU 1-8-15</i>	1 <i>3 TIMES</i>			
SEASON	G-GS	MIN	MPG	FG-A	FG%	3FG-A	3FG%	FT-A	FT%	REB / AVG.	AST / TO	BS / S	TP	AVG.
2013-14	30-3	243	8.1	19-30	.633	0-0	.000	6-20	.300	52 / 1.7	0 / 13	3 / 1	44	1.5
2014-15	13-0	141	10.8	17-31	.548	0-0	.000	9-13	.692	41 / 3.2	1 / 12	5 / 2	43	3.3
TOTAL	43-3	384	8.9	36-61	.590	0-0	.000	15-33	.455	93 / 2.2	1 / 25	8 / 3	87	2.0

LAST GAME: 4 points (2-of-2 FG, 0-of-1 FT) in 8 minutes of action off the bench at Auburn (Jan. 1), also grabbing 4 rebounds (all offensive).
 • 12 points (6-of-10 FG) in a strong 29 minutes off the bench in the win vs. LSU (Jan. 8), also rebounding 7 rebounds and career-high 3 blocks.
 • Career-game vs. Lipscomb (Jan. 3), pulling down a career-best 10 rebounds and scoring 7 points (3-of-5 FG, 1-of-1 FT) in 14 minutes off the bench.
 • Improved down the stretch of his junior campaign and scored a career-high 14 points on 6-of-6 shooting in the home win over Mississippi State (March 1, 2014).
 • Earned Second Team Junior College All-America honors after averaging 12.3 points and 8.3 rebounds for Southwestern Illinois College.
 • Played one season of prep basketball (2010-11) at Westwind Academy in Phoenix, Ariz., after beginning his high school career at Oak Bay in Victoria, British Columbia.

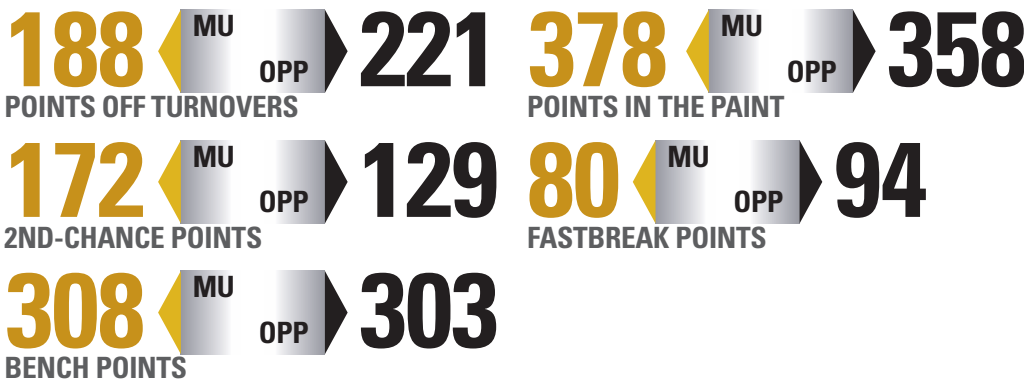
MIZZOU STARTERS

Opponent	G	G	G	F	F	Record**
Nov. 14 UMKC !	Shamburger	Clark	Gill-Caesar	Williams, III	Rosburg	0-1
Nov. 16 Valparaiso	Shamburger	Clark	Gill-Caesar	Williams, III	Rosburg	1-1
Nov. 19 Oral Roberts	Shamburger	Clark	Gill-Caesar	Williams, III	Rosburg	2-1
Nov. 24 vs. #2 Arizona !	Shamburger	Clark	Gill-Caesar	Williams, III	Rosburg	2-2
Nov. 25 vs. Purdue !	Shamburger	Clark	Gill-Caesar	Williams, III	Rosburg	2-3
Nov. 26 vs. Chaminade !	Shamburger	Clark	Gill-Caesar	Williams, III	Rosburg	3-3
Dec. 2 SEMO	Shamburger	Wright	Gill-Caesar	Williams, III	Rosburg	1-0
Dec. 5 at #22 Oklahoma	Shamburger	Wright	Gill-Caesar	Williams, III	Rosburg	1-1
Dec. 11 Elon	Shamburger	Wright	Gill-Caesar	Williams, III	Rosburg	2-1
Dec. 13 Xavier	Shamburger	Wright	Gill-Caesar	Williams, III	Rosburg	2-2
Dec. 20 vs. Illinois #	Shamburger	Clark	Gill-Caesar	Williams, III	Rosburg	3-4
Dec. 30 vs. Oklahoma St. #	Shamburger	Clark	Gill-Caesar	Williams, III	Gant	0-1
Jan. 3 Lipscomb	Shamburger	Clark	Gill-Caesar	Williams, III	Gant	1-1
Jan. 8 LSU *	Shamburger	Clark	Wright	Williams, III	Gant	1-0
Jan. 10 at Auburn *	Shamburger	Clark	Wright	Williams, III	Gant	1-1
Jan. 13 at Kentucky *						
Jan. 17 Tennessee *						
Jan. 21 at Texas A&M *						
Jan. 24 Arkansas *						
Jan. 29 Kentucky *						
Jan. 31 Ole Miss *						
Feb. 4 at Alabama *						
Feb. 7 Texas A&M *						
Feb. 10 at South Carolina *						
Feb. 14 Mississippi State *						
Feb. 18 at Arkansas *						
Feb. 21 at Vanderbilt *						
Feb. 24 Florida *						
Feb. 28 at Georgia *						
March 3 Auburn *						
March 7 at Mississippi State *						

MIZZOU WHEN...

Playing at home	6-3
Playing on the road	0-2
Playing on a neutral court	1-3
SEC games	1-1
SEC at home	1-0
SEC on the road	0-1
Following a win	3-4
Following a loss	4-3
Leading at half	3-1
Trailing at half	4-7
Tied at half	0-0
Shoots at least 50%	2-0
Shoots less than 50%	5-8
Opponent shoots 50%	0-2
Shoots more FT than Opp.	5-1
Shoots fewer FT than Opp.	2-7
Shoots same FT as Opp.	0-0
Makes more FT than Opp.	5-0
Makes fewer FT than Opp.	2-8
Makes same FT as Opp.	0-0
Scores 90-110	0-0
Scores 80-89	0-0
Scores 70-79	5-2
Scores 69 or fewer	2-6
Leads in rebounding	5-3
Trails in rebounding	2-4
Tied in rebounding	0-1
More turnovers than Opp.	3-6
Fewer turnovers than Opp.	4-2
Same turnovers as Opp.	0-0
In November	3-3
In December	2-4
In January	2-1
In February	0-0
In March	0-0
Margin between 1-5	2-2
Margin between 6-10	1-2
Margin between 11-20	4-3
Margin 20+	0-1
Overtime Games	1-1

MIZZOU SCORING ANALYSIS



HE'S ON FIRE!

Mizzou's leading scorer and rebounder this season has been sophomore forward **Johnathan Williams, III**, averaging 13.7 points and 7.1 rebounds. Williams' strong season continued with the sixth double-double of his career, scoring 21 points and grabbing 10 rebounds vs. LSU (Jan. 8). The effort marked his **eighth-straight game scoring in double figures**.

The Tiger previously powered to his fifth career double-double vs. Lipscomb on Jan. 3, scoring 16 points (4-of-9 FG, 8-of-14 FT) and grabbing 10 rebounds in the 72-60 win.

Williams has been a model of consistency this season, with just two outlier outings vs. UMKC (6 pts.) and Chaminade (4 pts.). The game against the Silverswords was a short contest for the Tiger forward as Williams started, but played just seven minutes and scored four points while dealing with a right knee injury.

Williams responded from that tough outing vs. Chaminade with his outstanding performance vs. SEMO. His career double-doubles are outlined below:

#1	#2	#3	#4	#5	#6
10 10	10 15	11 15	18 11	16 10	21 10
PTS. REB.	PTS. REB.	PTS. REB.	PTS. REB.	PTS. REB.	PTS. REB.
IUPUI (11/25/13) 5-7 FG; 0-0 3PT; 0-2 FT	UCLA (12/7/13) 3-5 FG; 0-0 3PT; 4-6 FT	VS. TEXAS A&M (3/13/14) 4-9 FG; 1-2 3PT; 2-2 FT	SEMO (12/2/14) 5-9 FG; 0-2 3PT; 8-14 FT	LIPSCOMB (1/3/15) 4-9 FG; 0-0 3PT; 8-14 FT	LSU (1/8/15) 8-17 FG; 0-1 3PT; 5-8 FT
64 78	71 80	83 91	61 65	60 72	67 74

JOHNATHAN WILLIAMS, III

6-9 | 225 | F | SO



SEASON SCORING AT A GLANCE

GAME	FGM	FGA	PTS
UMKC (11/14/14)	3	7	6
VALPARAISO (11/16/14)	5	11	10
ORAL ROBERTS (11/19/14)	2	3	10
VS. ARIZONA (11/24/14)	5	11	11
VS. PURDUE (11/25/14)	3	7	14
VS. CHAMINADE (11/26/14)	1	2	4
SEMO (12/2/14)	5	9	18
AT #22 OKLAHOMA (12/5/14)	6	11	16
ELON (12/11/14)	3	10	16
XAVIER (12/13/14)	5	10	17
ILLINOIS (12/20/14)	6	13	15
OKLAHOMA STATE (12/30/14)	8	13	22
LIPSCOMB (1/3/15)	4	9	16
LSU (1/8/15)	8	17	21
AUBURN (1/10/15)	4	9	9

SAVVY SENIOR SHAMBURGER

Senior guard **Keith Shamburger** has been Mizzou's "minutes warrior" this season, averaging a team-best **34.1** minutes per game. That mark ranks **tied for fifth-best in the Southeastern Conference**.

Since logging a season-low 24 minutes in Mizzou's game vs. Purdue at the EA Sports Maui Invitational (Nov. 25), **Shamburger has played no fewer than 30 minutes in each of the following nine games**.

Shamburger played a season-high 40 minutes in the overtime setback vs. Oklahoma State (Dec. 30), **the ninth time in his career** he has reached the 40-minute barrier.

The Tiger had his best game at Mizzou with his 21 points (5-of-12 FG, 5-of-9 3PT, 6-of-7 FT) at Auburn (Jan. 10). **The effort was his 12th career 20-point game**.

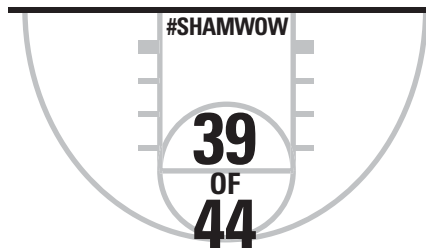
Shamburger was on his game vs. Lipscomb (Jan. 3), netting 15 points (6-of-9 FG, 3-of-5 3PT) for **his second-highest scoring game as a Tiger**.

Doing the little things on the court is a main attribute to Shamburger's game and is something head coach Kim Anderson appreciates about the graduate student. Shamburger has recorded **at least three assists in 11 of the 15 games this season**, compiling a team-best 47 dimes.

Shamburger has shown his ability to hit the three-pointer for the Tigers, with his **22 triples** currently a team-best.

KEITH SHAMBURGER

5-11 | 170 | G | RS SR



FREE THROWS

88.6%

HOT STREAK

Shamburger sank **23 consecutive** free throws, beginning with the Tigers' game vs. Arizona on Nov. 24 at the EA Sports Maui Invitational and continuing to the final minutes of the win vs. LSU (Jan. 8). Those 23-straight makes includes his standout 9-of-9 day at the charity stripe vs. Elon (Dec. 11).

9 OF 9 FT
VS. ELON

COACH KIM ANDERSON: A TRUE SON OF MISSOURI



KIM ANDERSON
 FIRST SEASON AT MIZZOU (7-8)
 13TH SEASON OVERALL (281-103)

.732

CAREER WINNING % AS A HEAD COACH

- Kim Anderson was hired as the 18th men's basketball coach in Mizzou history on April 28, 2014. The two-time Mizzou graduate (1979, '81) earned **2014 NABC National Coach of the Year** honors after leading the University of Central Missouri to the 2014 NCAA Division II title.
- The move by Director of Athletics Mike Alden signaled a return to Missouri's proud history and helps the program welcome back a "True Son" (Sedalia, Mo.) who is coming off a 30-5 record with the Mules and the 2014 NCAA Division II National Championship. Anderson's national title run at UCM becomes even more impressive considering the program welcomed in 10 new players in 2013-14 and had just one returning student-athlete averaging more than 4.7 points per game.
- In addition to being one of the Top 10 winningest coaches in Division II history, Anderson resigned his spot in Warrensburg as the school's all-time winningest coach. He led the Mules to three 30-win seasons, the only 30-win seasons in school history. He finished above .500 his 11 final seasons and won 20 games seven times in 12 years, finishing among the MIAA's top three in the league standings nine times over his final 10 seasons.
- It's easy to see why Anderson was targeted early by Alden. He embodies the key characteristics of his fan base and his former mentor, Norm Stewart. Anderson spent 11 seasons on staff at Mizzou over two stints (1982-85 and 1991-99) and served six years as an assistant coach at Baylor (1985-91) under Gene Iba. Anderson was first a graduate assistant for Stewart from 1982-85 and helped the program to the 1983 Big Eight title, the program's fourth straight, before taking his first full-time assistant coaching role with the Bears two years later.



Legendary Tiger head coach Norm Stewart found his 1977 Big Eight Player of the Year just down the road from Columbia in Sedalia, Mo.



The Anderson Family: sons Brett (L) and Ryan (R) with wife Melissa.



(Above) Anderson hears from Coach Stewart while sitting on the bench during his Missouri playing days.

(Below) Anderson and Coach Stewart reconnected at the EA Sports Maui Invitational on Nov. 24.



Anderson averaged 18.3 points and 7.9 rebounds per game as a senior (1976-77), winning Big Eight Player of the Year. Mizzou won 20 games in back-to-back seasons for just the second time ever his final two years.



Anderson helped lead Missouri to a 219-128 record as an assistant coach over two different stints in Columbia (1982-85, 1991-99). The Tigers posted a 60-36 record during his first stay in Columbia, and after his return from Baylor (1985-91), Mizzou went 159-92. His second stint with head coach Norm Stewart netted five NCAA Tournament appearances in eight seasons.



Anderson (1973-77) visits with SEC Network's Jon Sundvold (1980-83) after his first Mizzou head coaching win, 56-41 over Valparaiso (Nov. 16).

ANDERSON AS HEAD COACH

YR REC. CONF. (FINISH) POSTSEASON

MISSOURI (2014-PRESENT)

2014-15 7-8 1-1

CENTRAL MISSOURI (2002-14)

2013-14	30-5	16-3 (1ST)	NCAA NATIONAL CHAMPIONS
2012-13	22-8	13-5 (T-1ST)	NCAA TOURNAMENT
2011-12	19-8	15-5 (T-1ST)	MIAA TOURNAMENT
2010-11	18-11	13-9 (5TH)	MIAA TOURNAMENT
2009-10	27-4	18-2 (1ST)	NCAA SWEET SIXTEEN
2008-09	30-5	16-4 (2ND)	NCAA FINAL FOUR
2007-08	18-10	11-7 (3RD)	MIAA TOURNAMENT
2006-07	31-4	15-3 (1ST)	NCAA FINAL FOUR
2005-06	24-8	11-5 (2ND)	NCAA
2004-05	24-7	14-4 (1ST)	NCAA
2003-04	18-10	10-8 (4TH)	MIAA TOURNAMENT
2002-03	13-15	7-11 (7TH)	MIAA TOURNAMENT
12 YEARS	274-95	159-66	7 NCAA TOURNAMENTS
TOTAL	281-103	160-67	
	(.734)	(.707)	

2014-15 MIZZOU OVERALL STATS

Record	Overall	Home	Away	Neutral
ALL GAMES	7-8	6-3	0-2	1-3
CONFERENCE	1-1	1-0	0-1	0-0
NON-CONFERENCE	6-7	5-3	0-1	1-3

#	Player	GP	GS	Min	TOTAL			3-PTS			REBOUNDS			Avg	PF	FO	A	TO	Blk	Stl	Pts	Avg					
					Avg	FG	FGA	Pct	3FG	FGA	Pct	FT	FTA										Pct	Off	Def	Tot	
03	Williams III, Johnat	15	15	430	28.7	68	142	.479	8	26	.308	61	95	.642	38	69	107	7.1	45	1	14	42	10	6	205	13.7	
13	Gill-Caesar, Montagu	13	13	352	27.1	47	130	.362	19	53	.358	36	44	.818	12	36	48	3.7	27	0	5	23	2	11	149	11.5	
14	Shamburger, Keith	15	15	512	34.1	38	88	.432	22	57	.386	39	44	.886	10	38	48	3.2	32	0	47	33	3	16	137	9.1	
15	Clark, Wes	14	11	415	29.6	44	127	.346	17	52	.327	27	34	.794	6	44	50	3.6	35	2	41	27	3	25	132	9.4	
12	Wright, Namon	15	6	238	15.9	30	65	.462	18	38	.474	3	6	.500	0	31	31	2.1	27	0	10	14	2	9	81	5.4	
04	Isabell, Tramaine	15	0	238	15.9	26	75	.347	11	36	.306	17	20	.850	2	16	18	1.2	22	0	24	16	0	11	80	5.3	
05	Allen, D'Angelo	15	0	249	16.6	26	54	.481	3	8	.375	9	15	.600	16	36	52	3.5	31	0	10	11	4	6	64	4.3	
45	Post, Keanau	13	0	141	10.8	17	31	.548	0	0	.000	9	13	.692	18	23	41	3.2	27	1	1	12	5	2	43	3.3	
44	Rosburg, Ryan	15	11	263	17.5	18	41	.439	0	0	.000	5	27	.185	25	26	51	3.4	33	1	6	10	11	3	41	2.7	
23	Gant, Jakeenan	6	4	94	15.7	16	28	.571	1	8	.125	6	9	.667	6	9	15	2.5	11	0	1	3	4	3	39	6.5	
02	Bello, Deuce	11	0	118	10.7	13	20	.650	4	7	.571	2	10	.200	2	12	14	1.3	21	1	2	10	3	4	32	2.9	
TM TEAM.....													18	22	40	2.7	1		4		0						
Total.....		15			343	801	.428	103	285	.361	214	317	.675	153	362	515	34.3	312	6	161	205	47	96	1003	66.9		
Opponents.....		15			336	803	.418	100	297	.337	254	368	.690	169	356	525	35.0	305	-	158	189	46	95	1026	68.4		

2014-15 Statistical Summaries

Team Statistics	MU	OPP
SCORING	1003	1026
Points per game	66.9	68.4
Scoring margin	-1.5	-
FIELD GOALS-ATT	343-801	336-803
Field goal pct	.428	.418
3 POINT FG-ATT	103-285	100-297
3-point FG pct	.361	.337
3-pt FG made per game	6.9	6.7
FREE THROWS-ATT	214-317	254-368
Free throw pct	.675	.690
F-Throws made per game	14.3	16.9
REBOUNDS	515	525
Rebounds per game	34.3	35.0
Rebounding margin	-0.7	-
ASSISTS	161	158
Assists per game	10.7	10.5
TURNOVERS	205	189
Turnovers per game	13.7	12.6
Turnover margin	-1.1	-
Assist/turnover ratio	0.8	0.8
STEALS	96	95
Steals per game	6.4	6.3
BLOCKS	47	46
Blocks per game	3.1	3.1
ATTENDANCE	62120	47296
Home games-Avg/Game	9-6902	2-10008
Neutral site-Avg/Game	-	4-6820

2014-15 Game-By-Game Scores

Date	Opponent	W/L	Score	Att.
11/14/14	UMKC	L	61-69	7014
11/16/14	VALPO	W	56-41	5369
11/19/14	ORAL ROBERTS	W	78-64	5563
11-24-14	vs ARIZONA	L	53-72	2400
11-25-14	vs PURDUE	L	61-82	2400
11-26-14	vs Chaminade	W	74-60	2400
12/2/14	SEMO	W	65-61	5506
12/05/14	at Oklahoma	L	63-82	11652
12/11/14	ELON	W	78-73	4514
12/13/14	XAVIER	L	58-74	7854
12/20/14	vs Illinois	L	59-62	20079
12/30/14	OKLAHOMA STATE	LOT	72-74	11376
1/3/15	LIPSCOMB	W	72-60	7415
*1/8/15	LSU	WOT	74-67	7509
*1/10/15	at Auburn	L	79-85	8365

SCORE BY PERIODS:

	1st	2nd	OT	Total
Mizzou	452	532	19	1003
Opponents	489	523	14	1026

2014-15 MIZZOU CONFERENCE STATS

##	Player	GP	GS	Min	TOTAL			3-PTS			REBOUNDS			Avg	PF	FO	A	TO	Blk	Stl	Pts	Avg				
					Avg	FG	FGA	Pct	3FG	FGA	Pct	FT	FTA										Pct	Off	Def	Tot
14	Shamburger, Keith	2	2	74	37.0	7	18	.389	7	15	.467	10	12	.833	2	9	11	5.5	6	0	6	2	0	2	31	15.5
03	Williams III, Johnat	2	2	62	31.0	12	26	.462	0	3	.000	6	10	.600	9	9	18	9.0	8	0	3	7	1	1	30	15.0
15	Clark, Wes	2	2	63	31.5	10	26	.385	5	14	.357	4	5	.800	1	9	10	5.0	6	0	4	1	0	3	29	14.5
45	Post, Keanau	2	0	37	18.5	8	12	.667	0	0	.000	0	1	.000	9	2	11	5.5	7	0	0	7	3	0	16	8.0
04	Isabell, Tramaine	2	0	66	33.0	4	14	.286	3	7	.429	4	4	1.000	1	5	6	3.0	5	0	10	3	0	2	15	7.5
12	Wright, Namon	2	2	43	21.5	4	13	.308	4	7	.571	0	0	.000	0	7	7	3.5	5	0	3	3	0	3	12	6.0
23	Gant, Jakeenan	2	2	29	14.5	5	7	.714	0	1	.000	0	0	.000	1	5	6	3.0	2	0	0	2	1	0	10	5.0
05	Allen, D'Angelo	2	0	33	16.5	3	9	.333	0	2	.000	1	1	1.000	2	4	6	3.0	5	0	2	3	0	0	7	3.5
44	Rosburg, Ryan	2	0	18	9.0	1	3	.333	0	0	.000	1	2	.500	0	1	1	0.5	2	0	0	0	3	0	3	1.5
TM	TEAM.....														2	1	3	1.5	0			0			0	
Total.....		2				54	128	.422	19	49	.388	26	35	.743	27	52	79	39.5	46	0	28	28	8	11	153	76.5
Opponents.....		2				49	118	.415	16	41	.390	38	60	.633	28	53	81	40.5	40	-	28	28	9	20	152	76.0

2014-15 Statistical Summaries

Team Statistics	MU	OPP
SCORING	153	152
Points per game	76.5	76.0
Scoring margin	+0.5	-
FIELD GOALS-ATT	54-128	49-118
Field goal pct	.422	.415
3 POINT FG-ATT	19-49	16-41
3-point FG pct	.388	.390
3-pt FG made per game	9.5	8.0
FREE THROWS-ATT	26-35	38-60
Free throw pct	.743	.633
F-Throws made per game	13.0	19.0
REBOUNDS	79	81
Rebounds per game	39.5	40.5
Rebounding margin	-1.0	-
ASSISTS	28	28
Assists per game	14.0	14.0
TURNOVERS	28	28
Turnovers per game	14.0	14.0
Turnover margin	+0.0	-
Assist/turnover ratio	1.0	1.0
STEALS	11	20
Steals per game	5.5	10.0
BLOCKS	8	9
Blocks per game	4.0	4.5
ATTENDANCE	7509	8365
Home games-Avg/Game	1-7509	1-8365
Neutral site-Avg/Game	-	0-0

SCORE BY PERIODS:	1st	2nd	OT	Total
Mizzou	67	77	9	153
Opponents	71	79	2	152

2014-15 MIZZOU POINTS-REBOUNDS-ASSISTS SUMMARY

Opponent	02 BELLO	03 WILLIAMS	04 ISABELL	05 ALLEN	12 WRIGHT	13 GILL-CAESAR	14 SHAMBURGER	15 CLARK	23 GANT	42 BARNARD	44 ROSBURG	45 POST
UMKC (11/14/14) L, 61-69	0-2-0	6-5-0	8-0-1	0-1-1	2-1-0	21-7-0	8-6-3	13-3-5	DNP	DNP	3-6-0	0-4-0
VALPO (11/16/14) W, 56-41	0-0-0	10-6-0	4-1-0	4-3-1	0-2-1	9-5-1	5-1-3	16-6-2	DNP	DNP	4-8-1	4-3-0
ORAL ROBERTS (11/19/14) W, 78-64	7-1-0	10-3-2	3-0-0	2-4-0	2-2-2	19-4-0	9-4-3	14-3-9	DNP	DNP	6-6-0	6-3-0
vs ARIZONA (11-24-14) L, 53-72	0-2-1	11-5-0	0-0-1	2-3-0	3-4-0	13-4-0	11-2-3	3-1-1	DNP	DNP	4-5-0	6-7-1
vs PURDUE (11-25-14) L, 61-82	8-2-0	14-5-1	5-2-2	2-3-1	8-2-0	2-2-1	11-0-2	7-4-1	DNP	DNP	0-2-1	4-0-0
vs Chaminade (11-26-14) W, 74-60	5-0-0	4-2-1	9-4-4	3-3-1	21-6-0	18-6-0	3-1-5	2-9-4	DNP	DNP	9-5-0	0-2-0
SEMO (12/2/14) W, 65-61	2-1-0	18-11-1	8-2-3	3-5-0	4-0-0	15-2-1	11-2-3	DNP	DNP	DNP	4-3-2	0-1-0
at Oklahoma (12/05/14) L, 63-82	3-2-0	16-8-0	2-0-1	2-3-2	12-0-1	15-6-0	5-2-3	8-0-3	DNP	DNP	0-3-1	0-0-0
ELON (12/11/14) W, 78-73	5-2-1	16-8-3	5-0-0	12-7-0	6-0-0	10-2-0	16-4-5	6-3-1	DNP	DNP	2-7-0	0-0-0
XAVIER (12/13/14) L, 58-74	0-1-0	17-9-0	2-0-0	8-1-0	2-2-1	4-0-0	7-3-3	3-4-1	13-1-0	DNP	2-1-1	0-0-0
vs Illinois (12/20/14) L, 59-62	2-1-0	15-8-1	0-0-1	8-5-1	3-0-1	8-3-0	5-5-1	11-5-3	7-2-0	DNP	0-2-0	DNP
OKLAHOMA ST. (12/30/14) L, 72-74 OT	DNP	22-9-1	5-0-1	4-5-0	6-3-0	15-5-1	0-4-5	12-0-1	6-4-0	DNP	2-2-0	DNP
LIPSCOMB (1/3/15) W, 72-60	DNP	16-10-1	14-3-0	7-3-1	0-2-1	0-2-1	15-3-2	8-2-6	3-2-1	DNP	2-0-0	7-10-0
LSU (1/8/15) W, 74-67 OT	DNP	21-10-0	3-4-6	2-1-1	9-5-2	DNP	10-5-4	13-5-3	4-2-0	DNP	0-0-0	12-7-0
at Auburn (1/10/15) L, 79-85	DNP	9-8-3	12-2-4	5-5-1	3-2-1	DNP	21-6-2	16-5-1	6-4-0	DNP	3-1-0	4-4-0

2014-15 MIZZOU & OPPONENT INDIVIDUAL/TEAM HIGHS

Mizzou Individual Game Highs

Points	22	Williams III, Johnat vs Oklahoma State (12/30/14)
	21	Shamburger, Keith at Auburn (01/10/15)
	21	Williams III, Johnat vs LSU (1/8/15)
	21	Wright, Namon vs Chaminade (11-26-14)
	21	Gill-Caesar, Montagu vs UMKC (11/14/14)
Field Goals Made	9	Gill-Caesar, Montagu vs UMKC (11/14/14)
	8	Williams III, Johnat vs LSU (1/8/15)
	8	Williams III, Johnat vs Oklahoma State (12/30/14)
Field Goal Att.	23	Gill-Caesar, Montagu vs UMKC (11/14/14)
	17	Williams III, Johnat vs LSU (1/8/15)
FG Pct (min 5 made)	1.000 (7-7)	Wright, Namon vs Chaminade (11-26-14)
	.714 (5-7)	Allen, D'Angelo vs ELON (12/11/14)
3-Point FG Made	5	Shamburger, Keith at Auburn (01/10/15)
	4	Gill-Caesar, Montagu vs Chaminade (11-26-14)
	4	Wright, Namon vs Chaminade (11-26-14)
	4	Gill-Caesar, Montagu vs Oral Roberts (11/19/14)
3-Point FG Att.	9	Shamburger, Keith at Auburn (01/10/15)
	8	Clark, Wes vs LSU (1/8/15)
	8	Gill-Caesar, Montagu vs Chaminade (11-26-14)
3-Pt FG Pct (min 3 made)	1.000 (4-4)	Wright, Namon vs Chaminade (11-26-14)
Free Throws Made	9	Shamburger, Keith vs ELON (12/11/14)
	9	Williams III, Johnat vs ELON (12/11/14)
	9	Williams III, Johnat vs Lipscomb (1/3/15)
Free Throw Att.	14	Williams III, Johnat vs SEMO (12/2/14)
	14	Williams III, Johnat vs ELON (12/11/14)
FT Pct (min 5 made)	1.000 (9-9)	Shamburger, Keith vs VALPO (11/16/14)
	1.000 (6-6)	Clark, Wes vs VALPO (11/16/14)
Rebounds	11	Williams III, Johnat vs SEMO (12/2/14)
	10	Williams III, Johnat vs LSU (1/8/15)
	10	Post, Keanau vs Lipscomb (1/3/15)
	10	Williams III, Johnat vs Lipscomb (1/3/15)
Assists	9	Clark, Wes vs Oral Roberts (11/19/14)
	6	Isabell, Tramaine vs LSU (1/8/15)
	6	Clark, Wes vs Lipscomb (1/3/15)
Steals	6	Clark, Wes vs UMKC (11/14/14)
	4	Clark, Wes vs Lipscomb (1/3/15)
	4	Shamburger, Keith vs Oral Roberts (11/19/14)
Blocked Shots	4	Williams III, Johnat vs UMKC (11/14/14)
	3	Post, Keanau vs LSU (1/8/15)
Turnovers	5	Williams III, Johnat at Auburn (01/10/15)
	5	Clark, Wes vs Illinois (12/20/14)
	5	Williams III, Johnat at Oklahoma (12/05/14)
Fouls	5	Clark, Wes vs Oklahoma State (12/30/14)
	5	Clark, Wes vs ELON (12/11/14)
	5	Bello, Deuce vs SEMO (12/2/14)
	5	Post, Keanau vs PURDUE (11-25-14)
	5	Rosburg, Ryan vs ARIZONA (11-24-14)
	5	Williams III, Johnat vs UMKC (11/14/14)
Minutes	40	Shamburger, Keith vs Oklahoma State (12/30/14)

Mizzou Team Game Highs

POINTS	79	at Auburn (01/10/15)
	78	ELON (12/11/14)
	78	ORAL ROBERTS (11/19/14)
FIELD GOALS MADE	27	at Auburn (01/10/15)
	27	LSU (1/8/15)
FIELD GOAL ATTEMPTS	67	LSU (1/8/15)
	63	UMKC (11/14/14)
FIELD GOAL PERCENTAGE	.510 (25-49)	ORAL ROBERTS (11/19/14)
	.500 (22-44)	SEMO (12/2/14)
3 PT FIELD GOALS MADE	12	ORAL ROBERTS (11/19/14)
	10	at Auburn (01/10/15)
3 PT FG ATTEMPTS	27	at Auburn (01/10/15)
	23	UMKC (11/14/14)
3 PT FG PERCENTAGE	.571 (12-21)	ORAL ROBERTS (11/19/14)
	.563 (9-16)	at Oklahoma (12/05/14)
FREE THROWS MADE	24	ELON (12/11/14)
	19	LIPSCOMB (1/3/15)
FREE THROW ATTEMPTS	31	LIPSCOMB (1/3/15)
	30	ELON (12/11/14)
FREE THROW PERCENTAGE	.857 (12-14)	VALPO (11/16/14)
	.800 (24-30)	ELON (12/11/14)
	.800 (16-20)	vs PURDUE (11-25-14)
REBOUNDS	41	vs Chaminade (11-26-14)
	40	at Auburn (01/10/15)
ASSISTS	16	LSU (1/8/15)
	16	ORAL ROBERTS (11/19/14)
STEALS	10	vs Chaminade (11-26-14)
	10	UMKC (11/14/14)
BLOCKED SHOTS	6	UMKC (11/14/14)
	5	LSU (1/8/15)
	5	VALPO (11/16/14)
TURNOVERS	17	vs Chaminade (11-26-14)
	17	vs ARIZONA (11-24-14)
	17	UMKC (11/14/14)
FOULS	29	vs PURDUE (11-25-14)
	27	at Auburn (01/10/15)

Opponent Individual Game Highs

Points	30	Obi Emegano vs Oral Roberts (11/19/14)
	27	Eddy, Luke vs ELON (12/11/14)
	26	Harrison, Martez vs UMKC (11/14/14)
Field Goals Made	8	Eddy, Luke vs ELON (12/11/14)
	8	Obi Emegano vs Oral Roberts (11/19/14)
Field Goal Att.	15	HORNOLBY, Keith vs LSU (1/8/15)
	15	Rice, Rayvonte vs Illinois (12/20/14)
	15	Eddy, Luke vs ELON (12/11/14)
	15	Bailey, Lee vs Chaminade (11-26-14)
FG Pct (min 6 made)	.875 (7-8)	Spangler, Ryan at Oklahoma (12/05/14)
3-Point FG Made	4	MORAN, Nathan vs Lipscomb (1/3/15)
	4	Kuany, Kuany vs Chaminade (11-26-14)
3-Point FG Att.	9	WISHON, Brett vs Lipscomb (1/3/15)
	9	Samson, Tanner vs ELON (12/11/14)
3-Pt FG Pct (min 3 made)	1.000 (3-3)	Harrell, KT at Auburn (01/10/15)
	1.000 (3-3)	RANDOLPH, Brandon vs Xavier (12/13/14)
	1.000 (3-3)	Cousins, Isaiyah at Oklahoma (12/05/14)
Free Throws Made	15	Harrison, Martez vs UMKC (11/14/14)
	14	Davis, Raphael vs PURDUE (11-25-14)
Free Throw Att.	18	Bowers, Cinmeon at Auburn (01/10/15)
	18	Nash, Le'Bryan vs Oklahoma State (12/30/14)
	18	Davis, Raphael vs PURDUE (11-25-14)
FT Pct (min 5 made)	1.000 (8-8)	Eddy, Luke vs ELON (12/11/14)
	1.000 (6-6)	Hammons, A.J. vs PURDUE (11-25-14)
Rebounds	17	MICKEY, Jordan vs LSU (1/8/15)
	14	Bowers, Cinmeon at Auburn (01/10/15)
Assists	9	McConnell, T.J. vs ARIZONA (11-24-14)
Steals	3	Bowers, Cinmeon at Auburn (01/10/15)
	3	HORNOLBY, Keith vs LSU (1/8/15)
	3	Williams, Josh vs Lipscomb (1/3/15)
	3	Forte, Phil vs Oklahoma State (12/30/14)
	3	Hield, Buddy at Oklahoma (12/05/14)
	3	BRADLEY, Jarekious vs SEMO (12/2/14)
	3	Eteuati, Frankie vs Chaminade (11-26-14)
	3	Johnson, Stanley vs ARIZONA (11-24-14)
	3	McConnell, T.J. vs ARIZONA (11-24-14)
	3	Harrison, Martez vs UMKC (11/14/14)
Blocked Shots	5	Thomas, TaShawn at Oklahoma (12/05/14)
Turnovers	6	MICKEY, Jordan vs LSU (1/8/15)
Fouls	5	Ross-Miller, KC at Auburn (01/10/15)
	5	MARTIN, Jarell vs LSU (1/8/15)
	5	Cobbins, Michael vs Oklahoma State (12/30/14)
	5	BLUIETT, Trevon vs Xavier (12/13/14)
	5	Winters, Ryan vs ELON (12/11/14)
	5	ADEOYE, Aaron vs SEMO (12/2/14)
	5	Eteuati, Frankie vs Chaminade (11-26-14)
	5	Tarczewski, Kaleb vs ARIZONA (11-24-14)
	5	Brandon Conley vs Oral Roberts (11/19/14)
	5	Smith, Thaddeus vs UMKC (11/14/14)

Opponent Team Game Highs

POINTS	85	at Auburn (01/10/15)
	82	at Oklahoma (12/05/14)
	82	vs PURDUE (11-25-14)
FIELD GOALS MADE	31	at Oklahoma (12/05/14)
	25	at Auburn (01/10/15)
	25	SEMO (12/2/14)
FIELD GOAL ATTEMPTS	67	ELON (12/11/14)
	66	LSU (1/8/15)
FIELD GOAL PERCENTAGE	.574 (31-54)	at Oklahoma (12/05/14)
	.533 (24-45)	XAVIER (12/13/14)
3 PT FIELD GOALS MADE	10	at Auburn (01/10/15)
	10	at Oklahoma (12/05/14)
3 PT FG ATTEMPTS	34	LIPSCOMB (1/3/15)
	28	vs Chaminade (11-26-14)
3 PT FG PERCENTAGE	.526 (10-19)	at Auburn (01/10/15)
	.500 (10-20)	at Oklahoma (12/05/14)
FREE THROWS MADE	33	vs PURDUE (11-25-14)
	25	at Auburn (01/10/15)
FREE THROW ATTEMPTS	43	vs PURDUE (11-25-14)
	37	at Auburn (01/10/15)
FREE THROW PERCENTAGE	.818 (18-22)	XAVIER (12/13/14)
	.793 (23-29)	UMKC (11/14/14)
REBOUNDS	50	LSU (1/8/15)
	43	UMKC (11/14/14)
ASSISTS	16	at Auburn (01/10/15)
	16	at Oklahoma (12/05/14)
STEALS	11	LSU (1/8/15)
	10	at Oklahoma (12/05/14)
	10	vs ARIZONA (11-24-14)
BLOCKED SHOTS	10	at Oklahoma (12/05/14)
TURNOVERS	19	LSU (1/8/15)
	17	XAVIER (12/13/14)
FOULS	26	ELON (12/11/14)
	25	LIPSCOMB (1/3/15)
	25	vs ARIZONA (11-24-14)
	25	ORAL ROBERTS (11/19/14)

2014-15 MIZZOU GAME-BY-GAME STATISTICS

Opponent	Date	Score	TOTAL			3-PTRS			REBOUNDS				PF	A	TO	Blk	Stl	Pts	Avg				
			W/L	FG	FGA	Pct	3FG	FGA	Pct	FT	FTA	Pct								Off	Def	Tot	Avg
UMKC	11/14/14	61-69	L	24	63	.381	5	23	.217	8	16	.500	17	21	38	38.0	25	10	17	6	10	61	61.0
VALPO	11/16/14	56-41	W	20	50	.400	4	17	.235	12	14	.857	10	27	37	37.5	16	9	12	5	4	56	58.5
ORAL ROBERTS	11/19/14	78-64	W	25	49	.510	12	21	.571	16	29	.552	9	23	32	35.7	24	16	9	3	7	78	65.0
vs ARIZONA	11-24-14	53-72	L	16	44	.364	3	13	.231	18	26	.692	8	26	34	35.2	20	7	17	2	2	53	62.0
vs PURDUE	11-25-14	61-82	L	19	55	.345	7	20	.350	16	20	.800	11	17	28	33.8	29	9	15	3	7	61	61.8
vs Chaminade	11-26-14	74-60	W	24	50	.480	9	21	.429	17	26	.654	12	29	41	35.0	20	15	17	3	10	74	63.8
SEMO	12/2/14	65-61	W	22	44	.500	8	15	.533	13	23	.565	8	23	31	34.4	20	10	12	2	4	65	64.0
at Oklahoma	12/05/14	63-82	L	25	59	.424	9	16	.563	4	8	.500	9	19	28	33.6	16	11	16	1	7	63	63.9
ELON	12/11/14	78-73	W	23	51	.451	8	18	.444	24	30	.800	9	28	37	34.0	25	10	12	3	5	78	65.4
XAVIER	12/13/14	58-74	L	21	54	.389	1	16	.063	15	20	.750	10	15	25	33.1	20	6	12	3	9	58	64.7
vs Illinois	12/20/14	59-62	L	22	50	.440	6	21	.286	9	13	.692	7	25	32	33.0	9	8	14	4	4	59	64.2
OKLAHOMA STATE	12/30/14	72-74	Lot	24	53	.453	7	20	.350	17	26	.654	11	23	34	33.1	23	9	14	2	7	72	64.8
LIPSCOMB	1/3/15	72-60	W	24	51	.471	5	15	.333	19	31	.613	5	34	39	33.5	19	13	10	2	9	72	65.4
LSU	1/8/15	74-67	Wot	27	67	.403	9	22	.409	11	15	.733	10	29	39	33.9	19	16	14	5	7	74	66.0
at Auburn	01/10/15	79-85	L	25	52	.481	10	19	.526	25	37	.676	11	20	31	35.0	22	16	9	3	9	85	68.4
Opponents		1026		336	803	.418	100	297	.337	254	368	.690	169	356	525	35.0	305	158	189	46	95	1026	68.4
Mizzou		1003		343	801	.428	103	285	.361	214	317	.675	153	362	515	34.3	312	161	205	47	96	1003	66.9

Games played: 15

Points/game: 68.4

FG Pct: 41.8

3FG Pct: 33.7

FT Pct: 69.0

Rebounds/game: 35.0

Assists/game: 10.5

Turnovers/game: 12.6

Assist/turnover ratio: 0.8

Steals/game: 6.3

Blocks/game: 3.1

2014-15 MIZZOU'S OPPONENTS GAME-BY-GAME STATISTICS

Opponent	Date	Score	TOTAL			3-PTRS			REBOUNDS				PF	A	TO	Blk	Stl	Pts	Avg				
			W/L	FG	FGA	Pct	3FG	FGA	Pct	FT	FTA	Pct								Off	Def	Tot	Avg
UMKC	11/14/14	61-69	L	20	54	.370	6	14	.429	23	29	.793	15	28	43	43.0	18	9	15	1	6	69	69.0
VALPO	11/16/14	56-41	W	15	46	.326	4	18	.222	7	12	.583	6	22	28	35.5	18	8	14	4	3	41	55.0
ORAL ROBERTS	11/19/14	78-64	W	18	44	.409	4	16	.250	24	35	.686	10	21	31	34.0	25	7	11	1	5	64	58.0
vs ARIZONA	11-24-14	53-72	L	24	53	.453	5	16	.313	19	25	.760	7	25	32	33.5	25	14	6	1	10	72	61.5
vs PURDUE	11-25-14	61-82	L	22	47	.468	5	14	.357	33	43	.767	15	26	41	35.0	20	12	16	8	6	82	65.6
vs Chaminade	11-26-14	74-60	W	19	56	.339	9	28	.321	13	17	.765	9	18	27	33.7	20	8	13	4	8	60	64.7
SEMO	12/2/14	65-61	W	25	53	.472	6	18	.333	5	14	.357	12	18	30	33.1	20	10	9	4	7	61	64.1
at Oklahoma	12/05/14	63-82	L	31	54	.574	10	20	.500	10	16	.625	8	27	35	33.4	11	16	14	10	10	82	66.4
ELON	12/11/14	78-73	W	24	67	.358	8	22	.364	17	24	.708	19	21	40	34.1	26	8	11	0	4	73	67.1
XAVIER	12/13/14	58-74	L	24	45	.533	8	18	.444	18	22	.818	8	24	32	33.9	22	12	17	1	1	74	67.8
vs Illinois	12/20/14	59-62	L	24	57	.421	4	18	.222	10	14	.714	10	23	33	33.8	13	7	8	1	3	62	67.3
OKLAHOMA STATE	12/30/14	72-74	Lot	22	50	.440	7	20	.350	23	36	.639	11	23	34	33.8	22	9	13	1	7	74	67.8
LIPSCOMB	1/3/15	72-60	W	19	59	.322	8	34	.235	14	21	.667	11	27	38	34.2	25	10	14	1	5	60	67.2
LSU	1/8/15	74-67	Wot	24	66	.364	6	22	.273	13	23	.565	17	33	50	35.3	18	12	19	6	11	67	67.2
at Auburn	01/10/15	79-85	L	25	52	.481	10	19	.526	25	37	.676	11	20	31	35.0	22	16	9	3	9	85	68.4
Opponents		1026		336	803	.418	100	297	.337	254	368	.690	169	356	525	35.0	305	158	189	46	95	1026	68.4
Mizzou		1003		343	801	.428	103	285	.361	214	317	.675	153	362	515	34.3	312	161	205	47	96	1003	66.9

Games played: 15

Points/game: 68.4

FG Pct: 41.8

3FG Pct: 33.7

FT Pct: 69.0

Rebounds/game: 35.0

Assists/game: 10.5

Turnovers/game: 12.6

Assist/turnover ratio: 0.8

Steals/game: 6.3

Blocks/game: 3.1

2014-15 SEASON BOX SCORES

FRIDAY, NOV. 14, 2014



69 **61**

PTS OFF TURNOVERS

1	2	Tot	
UMKC	9	14	23
Mizzou	2	9	11

PTS IN PAINT

1	2	Tot	
UMKC	10	14	24
Mizzou	12	18	30

2ND CHANCE PTS

1	2	Tot	
UMKC	8	5	13
Mizzou	8	8	16

FAST BREAK PTS

1	2	Tot	
UMKC	0	2	2
Mizzou	0	4	4

BENCH PTS

1	2	Tot	
UMKC	13	8	21
Mizzou	2	8	10

UMKC vs MIZZOU

11/14/14 8:02 pm at Mizzou Arena

VISITORS: UMKC 1-0

#	Player	tot-fg		3-pt		rebounds					a	to	blks	min				
		fg	fga	fg	fga	ft	fta	of	de	tot					pf	tp		
05	Holliday, Reese	f	0	2	0	1	0	0	0	1	1	1	0	0	0	1	0	15
21	Smith, Thaddeus	f	2	5	0	0	1	3	3	2	5	5	5	0	0	0	0	15
22	Shayok, Shayok	f	5	6	0	0	0	0	3	4	7	1	10	2	4	1	1	32
12	Harrison, Martez	g	5	14	1	2	15	16	2	2	4	3	26	3	2	0	3	28
13	Williams, Frank	g	2	9	1	4	2	2	1	6	7	0	7	0	1	0	0	28
01	Franceschi, Kevin	0	2	0	1	2	2	1	0	1	2	2	0	0	0	0	0	6
02	Taylor, Deshon	2	3	2	2	0	0	0	2	2	1	6	1	3	0	1	13	
04	Wedel, Mason	0	0	0	0	0	0	0	0	0	0	0	0	1	2	0	0	9
11	Jennings, Colin	2	3	2	3	0	0	0	0	1	1	2	6	1	1	0	0	15
23	Austin, Darius	1	3	0	0	0	0	0	1	1	2	1	2	0	0	0	1	10
25	Newbill, Broderick	1	6	0	1	1	4	3	5	8	1	3	1	1	0	0	20	
54	Kreuer, Isaac	0	1	0	0	2	2	0	1	1	2	2	0	0	0	0	0	9
TEAM		1 3 4																
Totals.....		20	54	6	14	23	29	15	28	43	18	69	9	15	1	6	200	

TOTAL FG% 1st Half: 11-27 40.7% 2nd Half: 9-27 33.3% Game: 37.0% DEADBALL
 3-Pt. FG% 1st Half: 5-9 55.6% 2nd Half: 1-5 20.0% Game: 42.9% REBOUNDS
 F Throw % 1st Half: 6-8 75.0% 2nd Half: 17-21 81.0% Game: 79.3% 3

HOME TEAM: MIZZOU 0-1

#	Player	tot-fg		3-pt		rebounds					a	to	blks	min				
		fg	fga	fg	fga	ft	fta	of	de	tot					pf	tp		
03	Williams III, Johnat	f	3	7	0	0	0	0	2	3	5	5	6	0	2	4	0	26
44	Rosburg, Ryan	f	1	1	0	0	1	5	3	3	6	2	3	0	1	1	1	27
13	Gill-Caesar, M.	g	9	23	1	6	2	3	4	3	7	1	21	0	1	0	0	36
14	Shamburger, Keith	g	3	6	2	4	0	0	3	3	6	4	8	3	4	1	0	31
15	Clark, Wes	g	4	14	1	6	4	6	0	3	3	3	13	5	2	0	6	34
02	Bello, Deuce	0	1	0	0	0	0	1	1	2	0	0	0	2	0	0	0	7
04	Isabell, Tramaine	3	7	1	5	1	2	0	0	0	4	8	1	3	0	1	12	
05	Allen, D'Angelo	0	0	0	0	0	0	0	1	1	4	0	1	0	0	1	15	
12	Wright, Namon	1	3	0	2	0	0	0	1	1	0	2	0	0	0	0	0	7
45	Post, Keanau	0	1	0	0	0	0	2	2	4	2	0	0	2	0	1	5	
TEAM		2 1 3																
Totals.....		24	63	5	23	8	16	17	21	38	25	61	10	17	6	10	200	

TOTAL FG% 1st Half: 10-30 33.3% 2nd Half: 14-33 42.4% Game: 38.1% DEADBALL
 3-Pt. FG% 1st Half: 2-10 20.0% 2nd Half: 3-13 23.1% Game: 21.7% REBOUNDS
 F Throw % 1st Half: 2-6 33.3% 2nd Half: 6-10 60.0% Game: 50.0% 2,1

Officials: Bruce Benedict, Sean Casey, Vladimir Voyard-Tadal

Technical fouls: UMKC-None. MU-M-None.

Attendance: 7014

Score by Periods 1st 2nd Total

UMKC	33	36	69
MIZZOU	24	37	61

SUNDAY, NOV. 16, 2014



41 **56**

PTS OFF TURNOVERS

1	2	Tot	
VALPO	10	2	12
Mizzou	9	8	17

PTS IN PAINT

1	2	Tot	
VALPO	10	8	18
Mizzou	8	18	26

2ND CHANCE PTS

1	2	Tot	
VALPO	0	2	2
Mizzou	6	2	8

FAST BREAK PTS

1	2	Tot	
VALPO	2	2	4
Mizzou	0	0	0

BENCH PTS

1	2	Tot	
VALPO	11	12	23
Mizzou	6	6	12

VALPO vs MIZZOU

11/16/14 5:02 p.m. at Mizzou Arena

VISITORS: VALPO 1-1

#	Player	tot-fg		3-pt		rebounds					a	to	blks	min				
		fg	fga	fg	fga	ft	fta	of	de	tot					pf	tp		
14	FERNANDEZ, Vashil	f	1	2	0	0	0	0	1	4	5	3	2	0	1	2	0	18
23	ADEKOYA, Jubril	f	1	8	0	0	1	3	1	7	8	4	3	1	2	0	0	31
25	PETERS, Alec	f	2	5	1	3	2	2	2	2	4	4	7	1	2	0	1	27
00	CARTER, Keith	g	0	5	0	4	0	0	0	3	3	3	0	3	1	0	0	28
02	WALKER, Tevonn	g	3	9	0	2	0	0	0	1	1	1	6	0	2	0	1	27
01	NICKERSON, E. V.	4	5	1	1	3	3	1	0	1	0	12	1	1	0	0	17	
03	JOSEPH, Max	0	0	0	0	0	2	0	2	2	3	0	0	2	0	1	10	
05	WALKER, Darien	2	7	1	5	1	2	0	1	1	0	6	1	0	1	0	20	
10	SKARA, David	2	4	1	2	0	0	0	1	1	0	5	1	1	1	0	18	
32	CHADWICK, David	0	1	0	1	0	0	0	0	0	0	0	0	1	0	0	4	
TEAM		1 1 2																
Totals.....		15	46	4	18	7	12	6	22	28	18	41	8	14	4	3	200	

TOTAL FG% 1st Half: 8-21 38.1% 2nd Half: 7-25 28.0% Game: 32.6% DEADBALL
 3-Pt. FG% 1st Half: 2-8 25.0% 2nd Half: 2-10 20.0% Game: 22.2% REBOUNDS
 F Throw % 1st Half: 5-10 50.0% 2nd Half: 2-2 100% Game: 58.3% 2

HOME TEAM: MIZZOU 1-1

#	Player	tot-fg		3-pt		rebounds					a	to	blks	min				
		fg	fga	fg	fga	ft	fta	of	de	tot					pf	tp		
03	Williams III, Johnat	f	5	11	0	2	0	0	1	5	6	3	10	0	1	0	0	27
44	Rosburg, Ryan	f	1	3	0	0	2	4	3	5	8	2	4	1	0	2	0	26
13	Gill-Caesar, M.	g	4	13	1	6	0	0	1	4	5	2	9	1	1	0	1	28
14	Shamburger, Keith	g	1	2	1	2	2	2	0	1	1	1	5	3	4	0	0	37
15	Clark, Wes	g	4	8	2	3	6	6	1	5	6	2	16	2	4	1	2	32
02	Bello, Deuce	0	0	0	0	0	0	0	0	0	0	0	0	0	0	0	0	2
04	Isabell, Tramaine	1	5	0	2	2	2	0	1	1	2	4	0	0	0	0	12	
05	Allen, D'Angelo	2	3	0	1	0	0	2	1	3	2	4	1	0	1	0	13	
12	Wright, Namon	0	2	0	1	0	0	0	2	2	0	0	1	0	0	1	12	
45	Post, Keanau	2	3	0	0	0	0	1	2	3	2	4	0	1	1	0	11	
TEAM		1 1 2																
Totals.....		20	50	4	17	12	14	10	27	37	16	56	9	12	5	4	200	

TOTAL FG% 1st Half: 6-24 25.0% 2nd Half: 14-26 53.8% Game: 40.0% DEADBALL
 3-Pt. FG% 1st Half: 2-10 20.0% 2nd Half: 2-7 28.6% Game: 23.5% REBOUNDS
 F Throw % 1st Half: 10-12 83.3% 2nd Half: 2-2 100% Game: 85.7% 0,1

Officials: Anthony Jordan, Michael Stephens, Terry Moore

Technical fouls: VALPO-None. MU-M-None.

Attendance: 5369

Score by Periods 1st 2nd Total

VALPO	23	18	41
MIZZOU	24	32	56

2014-15 SEASON BOX SCORES

WED., NOV. 19, 2014

64 **78**

PTS OFF TURNOVERS

1	2	Tot
ORU	5	7
Mizzou	7	13

PTS IN PAINT

1	2	Tot
ORU	8	12
Mizzou	16	22

2ND CHANCE PTS

1	2	Tot
ORU	1	7
Mizzou	13	15

FAST BREAK PTS

1	2	Tot
ORU	0	0
Mizzou	0	4

BENCH PTS

1	2	Tot
ORU	6	12
Mizzou	14	20

ORAL ROBERTS VS MIZZOU

11/19/14 7:02 p.m. at Mizzou Arena

VISITORS: Oral Roberts 1-1

#	Player	tot-fg		3-pt		rebounds					a	to	blks	min				
		fg	fga	fg	fga	of	de	tot	pf	tp								
05	Brandon Conley	f	2	2	0	0	3	4	1	0	1	5	7	0	0	0	1	15
22	Adrian Webber	f	1	7	0	3	0	0	1	2	3	3	2	0	0	0	1	18
01	Bobby Word	g	1	6	1	6	2	2	0	1	1	0	5	0	0	0	1	31
15	Obi Emergano	g	8	14	2	3	12	15	1	2	3	3	30	0	3	0	1	27
24	Korey Billbury	g	2	7	0	1	4	8	2	8	10	3	8	6	3	0	0	37
00	Aaron Young	0	0	0	0	0	0	0	0	0	0	0	0	0	1	0	0	2
03	Jabbar Singleton	0	2	0	1	2	2	0	1	1	1	1	2	0	1	0	0	10
23	Dederick Lee	0	1	0	1	0	0	0	1	1	0	0	0	0	1	0	0	4
33	Darian Harris	1	1	1	1	0	0	0	0	0	1	3	0	1	0	0	0	11
34	Denell Henderson	1	1	0	0	1	3	2	0	2	1	3	1	0	1	0	0	17
35	Drew Wilson	0	0	0	0	0	1	1	3	4	4	0	0	0	1	0	0	18
44	Albert Owens	2	3	0	0	0	0	0	0	0	4	4	0	0	0	0	1	10
TEAM		2 3 5																
Totals.....		18	44	4	16	24	35	10	21	31	25	64	7	11	1	5	200	

TOTAL FG% 1st Half: 13-20 65.0% 2nd Half: 5-24 20.8% Game: 40.9% DEADBALL
 3-Pt. FG% 1st Half: 4-7 57.1% 2nd Half: 0-9 0.0% Game: 25.0% REBOUNDS
 F Throw % 1st Half: 10-15 66.7% 2nd Half: 14-20 70.0% Game: 68.6% 4

HOME TEAM: Mizzou 2-1

#	Player	tot-fg		3-pt		rebounds					a	to	blks	min				
		fg	fga	fg	fga	of	de	tot	pf	tp								
03	Williams III, Johnat	f	2	3	2	2	4	6	0	3	3	3	10	2	2	1	0	24
44	Rosburg, Ryan	f	3	4	0	0	0	3	4	2	6	4	6	0	0	0	0	20
13	Gill-Caesar, M.	g	5	11	4	7	5	6	1	3	4	3	19	0	1	0	0	30
14	Shamburger, Keith	g	2	4	1	3	4	6	1	3	4	2	9	3	0	0	4	35
15	Clark, Wes	g	5	10	3	4	1	1	1	2	3	4	14	9	2	0	2	33
02	Bello, Deuce	3	5	1	2	0	0	0	1	1	3	7	0	1	2	1	15	
04	Isabell, Tramaine	1	4	1	2	0	0	0	0	0	0	3	0	0	0	0	8	
05	Allen, D'Angelo	1	2	0	0	0	2	2	2	4	2	2	0	1	0	0	14	
12	Wright, Namon	1	3	0	1	0	0	2	2	1	2	2	0	0	0	0	10	
45	Post, Keanau	2	3	0	0	2	5	0	3	3	2	6	0	0	0	0	11	
TEAM		2 2 2																
Totals.....		25	49	12	21	16	29	9	23	32	24	78	16	9	3	7	200	

TOTAL FG% 1st Half: 13-30 43.3% 2nd Half: 12-19 63.2% Game: 51.0% DEADBALL
 3-Pt. FG% 1st Half: 4-12 33.3% 2nd Half: 8-9 88.9% Game: 57.1% REBOUNDS
 F Throw % 1st Half: 8-12 66.7% 2nd Half: 8-17 47.1% Game: 55.2% 7

Officials: Mike Nance, Ron Groover, Mark Whitehead

Technical fouls: Oral Roberts-None. Mizzou-None.

Attendance: 5583

Score by Periods	1st	2nd	Total
Oral Roberts	40	24	64
Mizzou	38	40	78

MONDAY, NOV. 24, 2014

53 **72**

PTS OFF TURNOVERS

1	2	Tot
Mizzou	2	8
ARIZ	10	24

PTS IN PAINT

1	2	Tot
Mizzou	8	12
ARIZ	16	26

2ND CHANCE PTS

1	2	Tot
Mizzou	9	15
ARIZ	5	8

FAST BREAK PTS

1	2	Tot
Mizzou	2	4
ARIZ	6	8

BENCH PTS

1	2	Tot
Mizzou	6	11
ARIZ	9	18

MIZZOU VS ARIZONA

11-24-14 12 p.m. at Lahaina Civic Center, Maui, Hawaii

VISITORS: Mizzou 2-2

#	Player	tot-fg		3-pt		rebounds					a	to	blks	min				
		fg	fga	fg	fga	of	de	tot	pf	tp								
03	Williams III, Johnat	f	5	11	0	2	1	4	1	4	5	3	11	0	3	1	0	28
44	Rosburg, Ryan	f	2	4	0	0	0	0	1	4	5	5	4	0	0	1	0	14
13	Gill-Caesar, M.	g	2	7	1	2	8	12	2	2	4	3	13	0	1	0	0	29
14	Shamburger, Keith	g	3	6	0	3	5	6	0	2	2	1	11	3	4	0	1	31
15	Clark, Wes	g	1	6	1	2	0	0	0	1	1	0	3	1	3	0	1	29
02	Bello, Deuce	0	0	0	0	0	0	0	2	2	2	0	1	1	0	0	8	
04	Isabell, Tramaine	0	2	0	2	0	0	0	0	0	0	0	1	1	0	0	9	
05	Allen, D'Angelo	1	3	0	0	0	0	1	2	3	2	2	0	0	0	0	13	
12	Wright, Namon	1	3	1	2	0	0	0	4	4	1	3	0	2	0	0	14	
45	Post, Keanau	1	2	0	0	4	4	2	5	7	3	6	1	2	0	0	25	
TEAM		1 1																
Totals.....		16	44	3	13	18	26	8	26	34	20	53	7	17	2	2	200	

TOTAL FG% 1st Half: 8-24 33.3% 2nd Half: 8-20 40.0% Game: 36.4% DEADBALL
 3-Pt. FG% 1st Half: 2-6 33.3% 2nd Half: 1-7 14.3% Game: 23.1% REBOUNDS
 F Throw % 1st Half: 7-9 77.8% 2nd Half: 11-17 64.7% Game: 69.2% 3

HOME TEAM: ARIZONA 4-0

#	Player	tot-fg		3-pt		rebounds					a	to	blks	min				
		fg	fga	fg	fga	of	de	tot	pf	tp								
05	Johnson, Stanley	f	4	8	1	2	5	8	2	2	4	3	14	2	1	1	3	29
21	Ashley, Brandon	f	5	9	0	1	5	7	0	2	2	4	15	0	1	0	0	25
35	Tarczewski, Kaleb	c	2	3	0	0	3	4	3	5	8	5	7	0	1	0	0	28
01	York, Gabe	g	1	4	1	4	0	0	0	3	3	0	3	1	0	0	0	23
04	McConnell, T.J.	g	2	11	0	5	2	2	0	3	3	2	6	9	2	0	3	30
00	Jackson-Cartwright	1	2	0	0	0	0	0	2	2	3	2	2	1	0	2	10	
03	Victor, Craig	0	1	0	0	0	0	0	1	1	1	0	2	0	0	0	1	7
14	Ristic, Dusan	3	6	1	1	0	0	1	1	2	1	7	0	0	0	0	8	
23	Hollis-Jefferson, R.	5	6	1	1	4	4	1	5	6	4	15	0	0	0	0	23	
24	Pitts, Elliott	1	3	1	2	0	0	0	0	0	2	3	0	0	0	0	1	17
TEAM		1 1																
Totals.....		24	53	5	16	19	25	7	25	32	25	72	14	6	1	10	200	

TOTAL FG% 1st Half: 13-30 43.3% 2nd Half: 11-23 47.8% Game: 45.3% DEADBALL
 3-Pt. FG% 1st Half: 2-10 20.0% 2nd Half: 3-6 50.0% Game: 31.3% REBOUNDS
 F Throw % 1st Half: 4-7 57.1% 2nd Half: 15-18 83.3% Game: 76.0% 2

Officials: Dick Cartnell, Mike Stephens, Sean Hull

Technical fouls: Mizzou-None. ARIZONA-None.

Attendance: 2400

Score by Periods	1st	2nd	Total
Mizzou	25	28	53
ARIZONA	32	40	72

2014-15 SEASON BOX SCORES

TUESDAY, NOV. 25, 2014



82 vs **61**

PTS OFF TURNOVERS

1	2	Tot
PURD	16	23
Mizzou	2	10

PTS IN PAINT

1	2	Tot
PURD	20	30
Mizzou	8	12

2ND CHANCE PTS

1	2	Tot
PURD	9	6
Mizzou	3	7

FAST BREAK PTS

1	2	Tot
PURD	8	6
Mizzou	0	4

BENCH PTS

1	2	Tot
PURD	17	8
Mizzou	5	22

PURDUE vs Mizzou

11-25-14 9 a.m. at Lahaina Civic Center, Maui, Hawaii

VISITORS: PURDUE 4-1

#	Player	tot-fg		3-pt		rebounds												
		fg	fga	fg	fga	ft	fta	of	de	tot	pf	tp	a	to	blks	min		
12	Edwards, Vince	f	1	3	0	2	4	4	2	3	5	2	6	2	0	1	0	22
20	Hammons, A.J.	c	3	7	0	1	6	6	2	4	6	4	12	0	2	3	0	18
00	Octeus, Jon	g	2	3	0	0	4	4	0	6	6	1	8	4	2	0	1	21
21	Stephens, Kendall	g	3	7	3	5	0	0	1	2	3	4	9	0	1	0	0	17
35	Davis, Ropheal	g	4	7	0	1	14	18	1	2	3	1	22	0	1	0	2	29
01	Scott, Bryson		1	1	0	0	0	0	0	0	0	2	2	1	1	0	1	11
02	McKeeman, Jon	0	1	0	0	0	0	0	0	0	0	0	2	0	0	0	0	1
03	Thompson, P.J.	1	1	0	0	5	6	1	0	1	1	7	2	0	0	1	22	
05	Smotherman, Basil	2	8	0	2	0	0	1	2	3	0	4	1	1	2	1	17	
11	Toyra, Stephen	0	1	0	0	0	0	0	0	0	0	0	0	2	0	0	2	
23	Taylor, Jacquil	0	1	0	0	0	0	2	1	3	0	0	0	0	0	0	2	
31	Mathias, Dakota	2	3	2	3	0	0	0	1	1	3	6	1	0	0	0	18	
44	Haas, Isaac	3	4	0	0	0	5	3	5	8	2	6	1	5	2	0	20	
TEAM		2 2 1																
Totals.....		22	47	5	14	33	43	15	26	41	20	82	12	16	8	6	200	

TOTAL FG% 1st Half: 15-26 57.7% 2nd Half: 7-21 33.3% Game: 46.8% DEADBALL
 3-Pt. FG% 1st Half: 3-9 33.3% 2nd Half: 2-5 40.0% Game: 35.7% REBOUNDS
 F Throw % 1st Half: 12-17 70.6% 2nd Half: 21-26 80.8% Game: 76.7% 3

HOME TEAM: Mizzou 2-3

#	Player	tot-fg		3-pt		rebounds												
		fg	fga	fg	fga	ft	fta	of	de	tot	pf	tp	a	to	blks	min		
03	Williams III, Johnat	f	3	7	1	3	7	9	2	3	5	2	14	1	3	0	0	29
44	Rosburg, Ryan	f	0	5	0	0	0	0	1	1	2	2	0	1	1	1	0	23
13	Gill-Caesar, M.	g	1	6	0	2	0	0	1	1	2	2	2	1	1	0	0	16
14	Shamburger, Keith	g	3	4	2	3	3	0	0	0	2	11	2	3	0	1	24	
15	Clark, Wes	g	3	10	1	4	0	0	0	4	4	4	7	1	3	1	1	29
02	Bello, Deuce		3	3	0	0	2	4	0	2	2	4	8	0	2	0	1	16
04	Isabell, Tramaine	1	7	1	3	2	2	1	1	2	3	5	2	0	0	2	15	
05	Allen, D'Angelo	1	5	0	1	0	0	2	1	3	2	2	1	1	1	0	18	
12	Wright, Namon	3	7	2	4	0	0	0	2	2	3	8	0	1	0	2	20	
45	Post, Keanau	1	1	0	0	2	2	0	0	0	5	4	0	0	0	0	10	
TEAM		4 2 6																
Totals.....		19	55	7	20	16	20	11	17	28	29	61	9	15	3	7	200	

TOTAL FG% 1st Half: 7-29 24.1% 2nd Half: 12-26 46.2% Game: 34.5% DEADBALL
 3-Pt. FG% 1st Half: 2-11 18.2% 2nd Half: 5-9 55.6% Game: 35.0% REBOUNDS
 F Throw % 1st Half: 4-5 80.0% 2nd Half: 12-15 80.0% Game: 80.0% 3

Officials: Michael Stephens, Mike Sanzere, Donnie Eppley

Technical fouls: PURDUE-None. Mizzou-None.

Attendance: 2400

Score by Periods	1st	2nd	Total
PURDUE	45	37	82
Mizzou	20	41	61

WED., NOV. 26, 2014



74 vs **60**

PTS OFF TURNOVERS

1	2	Tot
Mizzou	8	9
Cham	7	9

PTS IN PAINT

1	2	Tot
Mizzou	12	12
Cham	8	10

2ND CHANCE PTS

1	2	Tot
Mizzou	4	6
Cham	2	4

FAST BREAK PTS

1	2	Tot
Mizzou	6	6
Cham	7	2

BENCH PTS

1	2	Tot
Mizzou	23	15
Cham	6	3

Mizzou vs Chaminade

11-26-14 9:30 a.m. at Lahaina Civic Center, Maui, Hawaii

VISITORS: Mizzou 3-3

#	Player	tot-fg		3-pt		rebounds												
		fg	fga	fg	fga	ft	fta	of	de	tot	pf	tp	a	to	blks	min		
03	Williams III, Johnat	f	1	2	0	0	2	2	0	2	2	1	4	1	1	0	0	7
44	Rosburg, Ryan	f	4	5	0	0	1	7	5	0	5	2	9	0	4	1	0	24
13	Gill-Caesar, M.	g	5	11	4	8	4	4	1	5	6	4	18	0	2	0	3	26
14	Shamburger, Keith	g	0	6	0	5	3	3	0	1	1	3	3	5	3	0	2	30
15	Clark, Wes	g	0	7	0	2	2	2	1	8	9	2	2	4	2	0	3	35
02	Bello, Deuce		2	3	1	1	0	1	0	0	0	0	5	0	0	0	9	
04	Isabell, Tramaine	4	4	0	0	1	1	0	4	4	3	9	4	2	0	0	18	
05	Allen, D'Angelo	1	4	0	1	1	2	1	2	3	1	3	1	1	1	1	17	
12	Wright, Namon	7	7	4	4	3	4	0	6	6	3	21	0	2	0	0	25	
45	Post, Keanau	0	1	0	0	0	0	2	0	2	1	0	0	0	1	1	9	
TEAM		2 1 3																
Totals.....		24	50	9	21	17	26	12	29	41	20	74	15	17	3	10	200	

TOTAL FG% 1st Half: 12-25 48.0% 2nd Half: 12-25 48.0% Game: 48.0% DEADBALL
 3-Pt. FG% 1st Half: 4-10 40.0% 2nd Half: 5-11 45.5% Game: 42.9% REBOUNDS
 F Throw % 1st Half: 10-15 66.7% 2nd Half: 7-11 63.6% Game: 65.4% 4

HOME TEAM: Chaminade 2-3

#	Player	tot-fg		3-pt		rebounds												
		fg	fga	fg	fga	ft	fta	of	de	tot	pf	tp	a	to	blks	min		
25	Eteuati, Frankie	f	2	4	0	0	0	2	2	0	2	5	4	2	0	2	3	24
03	Harper, James	g	1	5	0	2	0	0	0	3	3	3	2	0	2	0	0	22
05	Bailey, Lee	g	7	15	3	7	5	6	2	0	2	1	22	2	3	0	2	38
14	Kuany, Kuany	g	5	10	4	6	0	0	0	5	5	4	14	1	3	1	1	35
23	Hu, Kevin	g	1	7	0	4	7	8	1	2	3	4	9	2	3	0	0	37
01	Boyd, De'Von	0	0	0	0	0	0	0	0	0	0	0	0	0	0	0	0	0+
02	Pu'u lei-Auld, K.	1	1	1	1	0	0	0	0	1	1	1	3	0	1	0	0	5
10	Mathew, AJ	0	0	0	0	0	0	0	0	0	0	0	0	0	0	1	0	4
22	Louder, Michael	0	2	0	1	0	0	0	0	0	0	2	0	0	0	0	0	4
33	Shastri, Kiran	2	12	1	7	1	1	3	4	7	0	6	1	1	0	2	31	
Team		1 3 4																
Totals.....		19	56	9	28	13	17	9	18	27	20	60	8	13	4	8	200	

TOTAL FG% 1st Half: 9-31 29.0% 2nd Half: 10-25 40.0% Game: 33.9% DEADBALL
 3-Pt. FG% 1st Half: 5-14 35.7% 2nd Half: 4-14 28.6% Game: 32.1% REBOUNDS
 F Throw % 1st Half: 5-5 100% 2nd Half: 8-12 66.7% Game: 76.5% 3,1

Officials: Donnie Eppley, Mike Sanzere, Sean Hull

Technical fouls: Mizzou-None. Chaminade-None.

Attendance: 2400

Score by Periods	1st	2nd	Total
Mizzou	38	36	74
Chaminade	28	32	60

2014-15 SEASON BOX SCORES

TUESDAY, DEC. 2, 2014

PTS OFF TURNOVERS

2ND CHANCE PTS

BENCH PTS



61 **65**

1	2	Tot	
SEMO	6	5	11
Mizzou	2	6	8

1	2	Tot	
SEMO	0	4	4
Mizzou	5	5	10

1	2	Tot	
SEMO	15	5	20
Mizzou	5	8	13

PTS IN PAINT

1	2	Tot	
SEMO	8	22	30
Mizzou	14	10	24

FAST BREAK PTS

1	2	Tot	
SEMO	0	2	2
Mizzou	4	0	4

SEMO vs Mizzou

12/2/14 7:02 pm at Mizzou Arena (Columbia, Mo.)

VISITORS: SEMO 3-4

#	Player	tot-fg		3-pt		rebounds												
		fg	fga	fg	fga	ft	fta	of	de	tot	pf	tp	a	to	blks	min		
01	JOHNSON, Nino	f	3	5	0	0	0	1	4	3	7	4	6	0	2	3	0	33
24	ADEOYE, Aaron	f	1	2	0	1	0	0	0	0	0	5	2	0	0	1	1	16
04	CLEVELAND, A.	g	4	9	0	3	2	7	0	4	4	2	10	3	0	0	1	35
23	BRADLEY, Jarekious	g	5	13	1	4	1	2	0	1	1	3	12	1	0	0	3	31
55	THOMPSON, J.J.	g	4	5	1	1	2	4	1	1	2	2	11	6	2	0	1	33
00	LANGFORD, Josh	4	11	1	3	0	0	2	6	8	4	9	0	3	0	1	27	
02	JONES, Isiah	3	5	3	5	0	0	2	3	5	0	9	0	1	0	0	15	
11	WALLACE, Marcus	1	1	0	0	0	0	1	0	1	0	2	0	1	0	0	7	
12	CALVIN, Jamaal	0	2	0	1	0	0	0	0	0	0	0	0	0	0	0	3	
TEAM		2 2																
Totals.....		25	53	6	18	5	14	12	18	30	20	61	10	9	4	7	200	

TOTAL FG% 1st Half: 12-26 46.2% 2nd Half: 13-27 48.1% Game: 47.2% DEADBALL
 3-Pt. FG% 1st Half: 4-11 36.4% 2nd Half: 2-7 28.6% Game: 33.3% REBOUNDS
 F Throw % 1st Half: 2-5 40.0% 2nd Half: 3-9 33.3% Game: 35.7% 2

HOME TEAM: Mizzou 4-3

#	Player	tot-fg		3-pt		rebounds												
		fg	fga	fg	fga	ft	fta	of	de	tot	pf	tp	a	to	blks	min		
03	Williams III, Johnat	f	5	9	0	2	8	14	4	7	11	2	18	1	3	1	0	33
44	Rosburg, Ryan	f	2	5	0	0	0	0	1	2	3	2	4	2	0	0	0	22
12	Wright, Namon	g	2	5	0	2	0	0	0	0	0	2	4	0	0	0	14	
13	Gill-Caesar, M.	g	5	9	2	3	3	3	0	2	2	2	15	1	2	0	2	31
14	Shamburger, Keith	g	4	5	3	4	0	0	1	1	2	3	11	3	4	0	0	39
02	Bello, Deuce	1	2	0	0	0	2	0	1	1	5	2	0	0	1	0	13	
04	Isabell, Tramaine	2	6	2	3	2	2	0	2	2	0	8	3	2	0	0	25	
05	Allen, D'Angelo	1	2	1	1	0	2	0	5	5	2	3	0	1	0	2	16	
45	Post, Keanau	0	1	0	0	0	0	0	1	1	2	0	0	0	0	0	7	
TEAM		2 2 4																
Totals.....		22	44	8	15	13	23	8	23	31	20	65	10	12	2	4	200	

TOTAL FG% 1st Half: 10-20 50.0% 2nd Half: 12-24 50.0% Game: 50.0% DEADBALL
 3-Pt. FG% 1st Half: 2-8 25.0% 2nd Half: 6-7 85.7% Game: 53.3% REBOUNDS
 F Throw % 1st Half: 2-7 28.6% 2nd Half: 11-16 68.8% Game: 56.5% 6

Officials: Pat Adams, Jeff Smith, Kipp Kissinger

Technical fouls: SEMO-None. Mizzou-None.

Attendance: 5506

Score by Periods

1st	2nd	Total	
SEMO	30	31	61
Mizzou	24	41	65

FRIDAY, DEC. 5, 2014

PTS OFF TURNOVERS

2ND CHANCE PTS

BENCH PTS



63 **82**

1	2	Tot	
Mizzou	7	13	20
OU	13	5	18

1	2	Tot	
Mizzou	3	3	6
OU	4	5	9

1	2	Tot	
Mizzou	8	7	15
OU	3	11	14

PTS IN PAINT

1	2	Tot	
Mizzou	6	14	20
OU	10	18	28

FAST BREAK PTS

1	2	Tot	
Mizzou	4	6	10
OU	11	7	18

Mizzou vs Oklahoma

12/05/14 8:40 p.m. CT at Norman, Okla. (Lloyd Noble Center)

VISITORS: Mizzou 4-4

#	Player	tot-fg		3-pt		rebounds												
		fg	fga	fg	fga	ft	fta	of	de	tot	pf	tp	a	to	blks	min		
03	Williams III, Johnat	f	6	11	1	1	3	4	4	4	8	3	16	0	5	1	2	30
44	Rosburg, Ryan	f	0	3	0	0	0	2	2	1	3	1	0	1	2	0	0	26
12	Wright, Namon	g	5	8	2	3	0	0	0	0	0	2	12	1	1	0	2	21
13	Gill-Caesar, M.	g	6	16	2	5	1	2	1	5	6	1	15	0	1	0	2	30
14	Shamburger, Keith	g	2	3	1	1	0	0	0	2	2	2	5	3	3	0	0	30
02	Bello, Deuce	1	1	1	1	0	0	0	2	2	3	3	0	1	0	0	15	
04	Isabell, Tramaine	1	3	0	2	0	0	0	0	0	1	2	1	0	0	1	5	
05	Allen, D'Angelo	1	5	0	0	0	0	0	3	3	2	2	2	2	0	0	19	
15	Clark, Wes	3	7	2	3	0	0	0	0	0	1	8	3	1	0	0	19	
45	Post, Keanau	0	2	0	0	0	0	0	0	0	0	0	0	0	0	0	5	
TEAM		2 2 4																
Totals.....		25	59	9	16	4	8	9	19	28	16	63	11	16	1	7	200	

TOTAL FG% 1st Half: 11-27 40.7% 2nd Half: 14-32 43.8% Game: 42.4% DEADBALL
 3-Pt. FG% 1st Half: 3-6 50.0% 2nd Half: 6-10 60.0% Game: 56.3% REBOUNDS
 F Throw % 1st Half: 0-0 0.0% 2nd Half: 4-8 50.0% Game: 50.0% 2

HOME TEAM: Oklahoma 5-2

#	Player	tot-fg		3-pt		rebounds												
		fg	fga	fg	fga	ft	fta	of	de	tot	pf	tp	a	to	blks	min		
00	Spangler, Ryan	f	7	8	2	2	2	4	2	3	5	1	18	2	1	1	0	30
35	Thomas, TaShawn	f	4	7	0	0	1	2	0	4	4	0	9	0	1	5	1	26
10	Woodard, Jordan	g	2	3	0	1	4	4	1	4	5	1	8	4	4	0	1	25
11	Cousins, Isaiah	g	6	9	3	3	1	1	0	3	3	1	16	3	4	2	2	32
24	Hield, Buddy	g	6	11	3	5	2	3	0	5	5	1	17	2	0	0	3	25
01	Booker, Frank	1	4	0	3	0	1	1	1	2	2	2	0	4	0	1	10	
02	Walker, Dinjiyl	1	5	1	3	0	1	1	0	1	2	3	3	0	1	1	14	
12	Lattin, Khadeem	3	3	0	0	0	0	1	2	3	0	6	0	0	1	1	13	
13	Fraschilla, James	0	1	0	1	0	0	0	0	0	0	0	0	0	0	0	1	
22	Harper, Daniel	0	0	0	0	0	0	1	0	1	0	0	1	0	0	0	1	
25	Cole, C.J.	0	0	0	0	0	0	0	0	0	1	0	0	0	0	0	2	
31	Bennett, D.J.	0	0	0	0	0	0	0	3	3	1	0	0	0	0	0	8	
41	Mankin, Austin	0	2	0	1	0	0	0	1	1	1	0	1	0	0	0	12	
45	Slate, Trey	1	1	1	1	0	0	0	0	0	0	3	0	0	0	0	1	
TEAM		1 1 2																
Totals.....		31	54	10	20	10	16	8	27	35	11	82	16	14	10	10	200	

TOTAL FG% 1st Half: 14-29 48.3% 2nd Half: 17-25 68.0% Game: 57.4% DEADBALL
 3-Pt. FG% 1st Half: 6-12 50.0% 2nd Half: 4-8 50.0% Game: 50.0% REBOUNDS
 F Throw % 1st Half: 3-4 75.0% 2nd Half: 7-12 58.3% Game: 62.5% 2

Officials: Rick Hartzell, Gerry Pollard, Terry Oglesby

Technical fouls: Mizzou-None. Oklahoma-None.

Attendance: 11652

Score by Periods

1st	2nd	Total	
Mizzou	25	38	63
Oklahoma	37	45	82

SEC/Big 12 Challenge game
 Est. Attendance: 7,283

2014-15 SEASON BOX SCORES

THURS., DEC. 11, 2014



PTS OFF TURNOVERS

1	2	Tot
ELON	0	4
Mizzou	8	13

PTS IN PAINT

1	2	Tot
ELON	10	16
Mizzou	8	14

2ND CHANCE PTS

1	2	Tot
ELON	0	12
Mizzou	6	10

FAST BREAK PTS

1	2	Tot
ELON	0	4
Mizzou	2	0

BENCH PTS

1	2	Tot
ELON	8	29
Mizzou	16	12

ELON vs Mizzou

12/11/14 6:02 p.m. at Mizzou Arena (Columbia, Mo.)

VISITORS: ELON 5-4

#	Player	tot-fg		3-pt		rebounds					a	to	blks	min				
		fg	fga	fg	fga	of	de	tot	pf	tp								
32	Winters, Ryan	f	2	2	0	0	1	2	0	2	2	5	5	0	1	0	19	
15	Sabato, Tony	c	0	3	0	0	0	0	3	2	5	4	0	3	0	0	21	
03	Samson, Tanner	g	3	10	3	9	1	2	1	4	5	3	10	2	0	0	27	
10	Hamilton, Austin	g	3	6	1	1	0	0	2	1	3	1	7	1	3	0	20	
11	Blake, Kevin	g	5	12	1	1	3	7	4	2	6	0	14	0	0	0	30	
01	Eddy, Luke		8	15	3	5	8	8	0	3	3	4	27	0	3	0	14	
02	Thompson, Dmitri	0	2	0	1	0	0	0	1	1	1	1	0	0	1	0	1	7
04	Luther, Collin	0	3	0	1	0	0	1	0	1	0	1	0	0	0	0	4	
12	Hairston, Christian	2	3	0	0	2	3	2	1	3	4	6	2	0	0	0	19	
14	Anton, Jack	1	3	0	1	0	0	1	2	3	2	2	0	0	0	0	17	
33	Bryant, Elijah	0	8	0	3	2	2	0	1	1	2	2	0	3	0	1	12	
TEAM		5 2 7																
Totals.....		24	67	8	22	17	24	19	21	40	26	73	8	11	0	4	200	

TOTAL FG%	1st Half: 8-33 24.2%	2nd Half: 16-34 47.1%	Game: 35.8%	DEADBALL
3-Pt. FG%	1st Half: 3-9 33.3%	2nd Half: 5-13 38.5%	Game: 36.4%	REBOUNDS
F Throw %	1st Half: 8-9 88.9%	2nd Half: 9-15 60.0%	Game: 70.8%	3

HOME TEAM: Mizzou 5-4

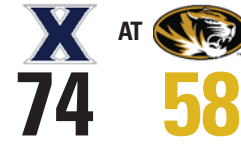
#	Player	tot-fg		3-pt		rebounds					a	to	blks	min				
		fg	fga	fg	fga	of	de	tot	pf	tp								
03	Williams III, Johnat	f	3	10	1	3	9	11	2	6	8	1	16	3	3	0	34	
44	Rosburg, Ryan	f	1	1	0	0	0	2	2	5	7	3	2	0	0	1	0	19
12	Wright, Namon	g	2	3	2	2	0	0	0	0	4	6	0	1	0	0	14	
13	Gill-Caesar, M.	g	2	6	2	2	4	4	0	2	2	3	10	0	2	1	0	28
14	Shamburger, Keith	g	3	6	1	3	9	9	0	4	4	3	16	5	3	1	1	36
02	Bello, Deuce	2	3	1	2	0	1	1	1	2	3	5	1	2	0	0	14	
04	Isabell, Tramaine	2	6	1	3	0	1	0	0	0	0	5	0	0	0	2	13	
05	Allen, D'Angelo	5	7	0	0	2	2	4	3	7	3	12	0	0	0	0	21	
15	Clark, Wes	3	9	0	3	0	0	0	3	3	5	6	1	1	0	1	18	
45	Post, Keanau	0	0	0	0	0	0	0	0	0	0	0	0	0	0	0	3	
TEAM		4 4																
Totals.....		23	51	8	18	24	30	9	28	37	25	78	10	12	3	5	200	

TOTAL FG%	1st Half: 13-22 59.1%	2nd Half: 10-29 34.5%	Game: 45.1%	DEADBALL
3-Pt. FG%	1st Half: 6-9 66.7%	2nd Half: 2-9 22.2%	Game: 44.4%	REBOUNDS
F Throw %	1st Half: 14-19 73.7%	2nd Half: 10-11 90.9%	Game: 80.0%	4

Officials: Tony Henderson, Chuck Jones, Brian Shey
 Technical fouls: ELON-None. Mizzou-None.
 Attendance: 4514

Score by Periods	1st	2nd	Total
ELON	27	46	73
Mizzou	46	32	78

SAT., DEC. 13, 2014



PTS OFF TURNOVERS

1	2	Tot
Xavier	9	12
Mizzou	8	7

PTS IN PAINT

1	2	Tot
Xavier	10	18
Mizzou	12	18

2ND CHANCE PTS

1	2	Tot
Xavier	2	6
Mizzou	5	9

FAST BREAK PTS

1	2	Tot
Xavier	2	2
Mizzou	4	2

BENCH PTS

1	2	Tot
Xavier	15	15
Mizzou	16	10

Xavier vs Mizzou

12/13/14 3:05 p.m. at Mizzou Arena (Columbia, Mo.)

VISITORS: Xavier 8-2

#	Player	tot-fg		3-pt		rebounds					a	to	blks	min				
		fg	fga	fg	fga	of	de	tot	pf	tp								
02	FARR, James	f	2	8	1	4	0	0	3	3	6	1	5	0	1	1	0	25
05	BLUIETT, Trevon	f	2	6	0	2	4	4	0	1	1	5	8	1	2	0	0	20
40	STAINBROOK, Matt	c	2	3	0	0	2	2	0	6	6	2	6	1	3	0	0	25
10	ABELL, Remy	g	2	4	0	0	4	4	1	1	2	1	8	3	1	0	0	25
11	DAVIS, Dee	g	6	9	1	3	4	4	0	4	4	3	17	4	1	0	0	36
00	AUSTIN JR., Larry	0	0	0	0	0	0	0	0	0	0	0	0	0	0	0	0	2
01	REYNOLDS, Jalen	1	1	0	0	0	0	0	0	1	1	3	2	0	1	0	0	8
03	RANDOLPH, B.	4	4	3	3	0	0	0	0	1	1	3	11	1	2	0	0	19
15	DAVIS, Myles	3	6	3	5	2	2	0	3	3	0	11	1	3	0	0	0	20
54	O'MARA, Sean	0	0	0	0	0	4	1	0	1	1	0	1	0	0	0	0	7
55	MACURA, J.P.	2	4	0	1	2	2	1	3	4	3	6	0	3	0	1	13	
TEAM		2 1 3																
Totals.....		24	45	8	18	18	22	8	24	32	22	74	12	17	1	1	200	

TOTAL FG%	1st Half: 10-21 47.6%	2nd Half: 14-24 58.3%	Game: 53.3%	DEADBALL
3-Pt. FG%	1st Half: 4-10 40.0%	2nd Half: 4-8 50.0%	Game: 44.4%	REBOUNDS
F Throw %	1st Half: 8-10 80.0%	2nd Half: 10-12 83.3%	Game: 81.8%	2,1

HOME TEAM: Mizzou 5-5

#	Player	tot-fg		3-pt		rebounds					a	to	blks	min				
		fg	fga	fg	fga	of	de	tot	pf	tp								
03	Williams III, J.	f	5	10	0	2	7	11	5	4	9	4	17	0	4	0	0	34
44	Rosburg, Ryan	f	1	3	0	0	0	0	1	0	1	2	2	1	1	0	0	16
12	Wright, Namon	g	1	4	0	3	0	0	0	2	2	3	2	1	1	1	0	15
13	Gill-Caesar, M.	g	2	10	0	3	0	0	0	0	0	3	4	0	2	0	1	28
14	Shamburger, K.	g	3	9	0	2	1	1	0	3	3	7	3	0	0	0	3	36
02	Bello, Deuce	0	0	0	0	0	0	0	1	1	0	0	0	0	1	0	2	10
04	Isabell, Tramaine	1	3	0	1	0	0	0	0	0	0	1	2	0	2	0	1	11
05	Allen, D'Angelo	3	3	0	0	2	2	0	1	1	0	8	0	0	0	0	1	11
15	Clark, Wes	1	4	0	1	1	2	2	2	4	0	3	1	0	0	0	0	20
23	Gant, Jakeenan	4	8	1	4	4	4	1	0	1	3	13	0	1	2	1	15	
45	Post, Keanau	0	0	0	0	0	0	0	0	0	0	0	0	0	0	0	0	4
TEAM		1 2 3 1																
Totals.....		21	54	1	16	15	20	10	15	25	20	58	6	12	3	9	200	

TOTAL FG%	1st Half: 9-25 36.0%	2nd Half: 12-29 41.4%	Game: 38.9%	DEADBALL
3-Pt. FG%	1st Half: 1-5 20.0%	2nd Half: 0-11 0.0%	Game: 6.3%	REBOUNDS
F Throw %	1st Half: 8-10 80.0%	2nd Half: 7-10 70.0%	Game: 75.0%	3

Officials: Joe Lindsay, Mike Nance, Tim Clougherty
 Technical fouls: Xavier-None. Mizzou-TEAM.
 Attendance: 7854

Score by Periods	1st	2nd	Total
Xavier	32	42	74
Mizzou	27	31	58

2014-15 SEASON BOX SCORES

SATURDAY, DEC. 20, 2014



PTS OFF TURNOVERS

1	2	Tot
Mizzou	3	5
Illinois	10	13

PTS IN PAINT

1	2	Tot
Mizzou	8	12
Illinois	22	30

2ND CHANCE PTS

1	2	Tot
Mizzou	3	4
Illinois	4	2

FAST BREAK PTS

1	2	Tot
Mizzou	5	2
Illinois	6	0

BENCH PTS

1	2	Tot
Mizzou	8	12
Illinois	4	1

Mizzou vs Illinois

12/20/14 1:05 p.m. at St. Louis, Mo. (Scottrade Center)

VISITORS: Mizzou 5-6

#	Player	f	tot-fg		3-pt		rebounds					a	to	blks	min			
			fg	fga	fg	fga	of	de	tot	pf	tp							
03	Williams III, Johnat	f	6	13	1	3	2	3	1	7	8	2	15	1	2	1	1	32
44	Rosburg, Ryan	f	0	1	0	0	0	0	1	1	2	1	0	0	1	1	0	11
13	Gill-Caesar, M.	g	3	8	0	2	2	2	0	3	3	1	8	0	4	0	2	31
14	Shamburger, Keith	g	1	5	1	4	2	2	2	3	5	0	5	1	0	1	0	32
15	Clark, Wes	g	4	9	1	5	2	2	0	5	5	1	11	3	5	0	0	31
02	Bello, Deuce		1	2	0	1	0	2	0	1	1	1	2	0	0	0	0	9
04	Isabell, Tramaine		0	1	0	1	0	0	0	0	0	0	0	0	0	0	0	7
05	Allen, D'Angelo		3	4	2	2	0	0	0	5	5	0	8	1	1	0	0	20
12	Wright, Namon		1	1	1	1	0	0	0	0	0	1	3	1	1	0	0	11
23	Gant, Jakeenan		3	6	0	2	1	2	2	0	2	2	7	0	0	1	1	16
TEAM									1		1							
Totals.....			22	50	6	21	9	13	7	25	32	9	59	8	14	4	4	200

TOTAL FG% 1st Half: 10-25 40.0% 2nd Half: 12-25 48.0% Game: 44.0% DEADBALL
 3-Pt. FG% 1st Half: 4-9 44.4% 2nd Half: 2-12 16.7% Game: 28.6% REBOUNDS
 F Throw % 1st Half: 6-10 60.0% 2nd Half: 3-3 100% Game: 69.2% 2

HOME TEAM: Illinois 9-3

#	Player	c	tot-fg		3-pt		rebounds					a	to	blks	min				
			fg	fga	fg	fga	ft	fta	of	de	tot					pf	tp		
32	Egwu, Nnanna	c	3	6	0	1	0	0	2	1	3	3	6	0	0	0	0	29	
03	Starks, Ahmad	g	6	13	1	7	0	0	0	0	0	1	13	2	1	0	1	33	
21	Hill, Malcolm	g	3	7	0	2	4	5	3	0	3	2	10	0	2	0	0	31	
24	Rice, Rayvonte	g	7	15	2	4	3	3	1	6	7	2	19	3	1	0	0	28	
25	Nunn, Kendrick	g	3	9	1	3	2	2	1	4	5	2	9	1	1	0	2	26	
01	Tate, Jaylon		0	0	0	0	1	2	0	1	1	0	1	0	2	0	0	7	
11	Cosby, Aaron		1	4	0	1	0	0	0	7	7	1	2	1	0	0	0	26	
12	Black, Leron		1	1	0	0	0	2	1	2	3	2	2	0	1	0	0	13	
22	Morgan, Maverick		0	2	0	0	0	0	1	0	1	0	0	0	0	1	0	7	
TEAM									1		2		3						
Totals.....			24	57	4	18	10	14	10	23	33	13	62	7	8	1	3	200	

TOTAL FG% 1st Half: 13-30 43.3% 2nd Half: 11-27 40.7% Game: 42.1% DEADBALL
 3-Pt. FG% 1st Half: 2-10 20.0% 2nd Half: 2-8 25.0% Game: 22.2% REBOUNDS
 F Throw % 1st Half: 4-4 100% 2nd Half: 6-10 60.0% Game: 71.4% 2

Officials: Ted Valentine, Mark Whitehead, Gerry Pollard
 Technical fouls: Mizzou-None. Illinois-Black, Leron.
 Attendance: 20079

Score by Periods	1st	2nd	Total
Mizzou	30	29	59
Illinois	32	30	62

34th Annual Bud Light Braggin' Rights Game

TUESDAY, DEC. 30, 2014



PTS OFF TURNOVERS

1	2	3	Tot
OSU	2	9	4
Mizzou	11	8	0

PTS IN PAINT

1	2	3	Tot
OSU	12	8	4
Mizzou	16	12	2

2ND CHANCE PTS

1	2	3	Tot
OSU	9	3	0
Mizzou	6	7	0

FAST BREAK PTS

1	2	3	Tot
OSU	0	3	0
Mizzou	4	0	0

BENCH PTS

1	2	3	Tot
OSU	5	1	0
Mizzou	10	7	0

Oklahoma State vs Mizzou

12/30/14 8:05 p.m. at Sprint Center (Kansas City, Mo.)

VISITORS: Oklahoma State 10-2

#	Player	f	tot-fg		3-pt		rebounds					a	to	blks	min				
			fg	fga	fg	fga	ft	fta	of	de	tot					pf	tp		
02	Nash, Le'Bryan	*	4	7	0	0	13	18	1	4	5	3	21	1	5	1	0	36	
12	Hickey, Anthony	*	6	14	2	7	0	0	2	6	8	2	14	1	2	0	1	37	
13	Forte, Phil	*	6	11	3	5	6	8	0	1	1	3	21	3	2	0	3	40-	
20	Cobbins, Michael	*	3	4	0	0	2	6	4	4	8	5	8	0	1	0	0	35	
22	Newberry, Jeff	*	1	5	1	2	1	2	0	2	2	3	4	4	0	0	2	28	
01	Griffin, Tyree		0	1	0	1	0	0	0	2	2	0	0	0	1	0	0	7	
05	Shine, Tavarius		0	1	0	1	0	0	1	0	1	1	0	0	0	0	0	5	
15	Sager, Christien		0	0	0	0	1	2	0	1	1	2	1	0	1	0	1	9	
23	Hammonds, Leyton		1	5	1	3	0	0	0	0	0	1	3	0	0	0	0	10	
30	Carroll, Jeffrey		0	0	0	0	0	0	0	0	0	1	0	0	0	0	0	4	
32	Allen, Anthony		0	0	0	0	0	0	0	0	0	0	0	0	0	0	0	3	
41	Solomon, Mitchell		1	2	0	1	0	0	2	2	4	1	2	0	1	0	0	11	
TEAM									1		1		2						
Totals.....			22	50	7	20	23	36	11	23	34	22	74	9	13	1	7	225	

TOTAL FG% 1st Half: 10-29 34.5% 2nd Half: 9-16 56.3% Game: 44.0% DEADBALL
 3-Pt. FG% 1st Half: 3-13 23.1% 2nd Half: 4-6 66.7% Game: 35.0% REBOUNDS
 F Throw % 1st Half: 1-5 20.0% 2nd Half: 16-24 66.7% Game: 63.9% 7

HOME TEAM: Mizzou 5-7

#	Player	c	tot-fg		3-pt		rebounds					a	to	blks	min				
			fg	fga	fg	fga	ft	fta	of	de	tot					pf	tp		
03	Williams III, Johnat	*	8	13	2	3	4	7	4	5	9	4	22	1	3	0	1	39	
13	Gill-Caesar, M.	*	3	8	2	5	7	8	1	4	5	2	15	1	2	1	0	30	
14	Shamburger, Keith	*	0	5	0	3	0	0	1	3	4	0	0	5	0	0	1	40-	
15	Clark, Wes	*	3	8	0	3	6	8	0	0	0	5	12	1	3	0	2	36	
23	Gant, Jakeenan	*	3	6	0	1	0	1	2	2	4	2	6	0	0	0	1	22	
04	Isabell, Tramaine		2	5	1	2	0	0	0	0	0	2	5	1	3	0	0	14	
05	Allen, D'Angelo		2	3	0	0	0	0	2	3	5	3	4	0	1	0	0	16	
12	Wright, Namon		2	3	2	3	0	2	0	3	3	2	6	0	1	1	0	16	
44	Rosburg, Ryan		1	2	0	0	0	0	1	1	2	3	2	0	0	0	2	12	
TEAM									2		2		1						
Totals.....			24	53	7	20	17	26	11	23	34	23	72	9	14	2	7	225	

TOTAL FG% 1st Half: 11-25 44.0% 2nd Half: 11-24 45.8% Game: 45.3% DEADBALL
 3-Pt. FG% 1st Half: 2-8 25.0% 2nd Half: 4-11 36.4% Game: 35.0% REBOUNDS
 F Throw % 1st Half: 7-11 63.6% 2nd Half: 5-9 55.6% Game: 65.4% 4

Officials: Antinio Petty, Joe DeRosa, Ron Groover
 Technical fouls: Oklahoma State-None. Mizzou-None.
 Attendance: 11376

Score by Periods	1st	2nd	OT	Total
Oklahoma State	24	38	12	74
Mizzou	31	31	10	72

2014-15 SEASON BOX SCORES

SAT., JAN. 3, 2015

L AT **M**
60 **72**

PTS OFF TURNOVERS

	1	2	Tot
LIPS	6	3	9
Mizzou	5	5	10

PTS IN PAINT

	1	2	Tot
LIPS	16	4	20
Mizzou	12	14	26

2ND CHANCE PTS

	1	2	Tot
LIPS	6	2	8
Mizzou	3	2	5

FAST BREAK PTS

	1	2	Tot
LIPS	0	0	0
Mizzou	0	2	2

BENCH PTS

	1	2	Tot
LIPS	15	6	21
Mizzou	13	17	30

Lipscomb vs Mizzou

1/3/15 4:00 p.m. at Columbia, Mo. (Mizzou Arena)

VISITORS: Lipscomb 5-9

#	Player	tot-fg		3-pt		rebounds							min					
		fg	fga	fg	fga	ft	fta	of	de	tot	pf	tp		a	to	blks		
52	Smith, Malcolm	c	3	5	1	2	0	0	0	1	1	1	1	7	1	0	0	6
02	Williams, Josh	g	3	13	2	8	3	4	4	3	7	1	11	3	4	0	3	38
04	MORAN, Nathan	g	5	10	4	7	3	4	0	1	1	3	17	2	1	0	1	32
22	Hampton, J.C.	g	0	8	0	6	0	0	0	6	6	3	0	1	2	0	0	26
32	WISHON, Brett	g	1	10	0	9	2	2	0	6	6	4	4	1	3	1	0	21
10	DENNY, Talbott		3	4	0	1	1	1	1	2	3	4	7	1	1	0	0	18
11	Duval, Asa		0	0	0	0	0	0	0	0	0	0	0	1	0	0	0	2
14	LANG, Chad		3	6	0	0	1	6	2	3	5	3	7	0	2	0	0	23
20	JOHNSON, Chad		0	0	0	0	0	0	0	2	2	0	0	0	1	0	0	4
21	Smith, Charles		0	0	0	0	0	0	0	0	0	2	0	0	0	0	0	3
23	KORN, Aaron		1	2	1	1	4	4	1	2	3	3	7	0	0	0	1	25
55	BRAMMEIER, G.		0	1	0	0	0	0	0	0	0	1	0	0	0	0	0	2
TEAM													3	1	4			
Totals.....			19	59	8	34	14	21	11	27	38	25	60	10	14	1	5	200

TOTAL FG% 1st Half: 13-32 40.6% 2nd Half: 6-27 22.2% Game: 32.2% DEADBALL
 3-Pt. FG% 1st Half: 5-19 26.3% 2nd Half: 3-15 20.0% Game: 23.5% REBOUNDS
 F Throw % 1st Half: 4-7 57.1% 2nd Half: 10-14 71.4% Game: 66.7% 2

HOME TEAM: Mizzou 6-7

#	Player	tot-fg		3-pt		rebounds							min					
		fg	fga	fg	fga	ft	fta	of	de	tot	pf	tp		a	to	blks		
03	Williams III, Johnat	f	4	9	0	0	8	14	3	7	10	4	16	1	3	0	0	25
23	Gant, Jakeenan	f	1	1	0	0	1	2	0	2	2	2	3	1	0	0	0	12
13	Gill-Caesar, M.	g	0	2	0	2	0	0	0	2	2	0	0	1	3	0	0	9
14	Shamburger, Keith	g	6	9	3	5	0	0	0	3	3	2	15	2	3	0	1	37
15	Clark, Wes	g	3	9	1	2	1	2	0	2	2	2	8	6	0	1	4	36
04	Isabell, Tramaine		4	8	1	3	5	6	0	3	3	1	14	0	0	0	2	23
05	Allen, D'Angelo		2	4	0	0	3	4	0	3	3	3	7	1	0	1	1	23
12	Wright, Namon		0	3	0	3	0	0	0	2	2	0	0	1	1	0	1	16
44	Rosburg, Ryan		1	1	0	0	0	2	0	0	0	2	2	0	0	0	0	5
45	Post, Keanau		3	5	0	0	1	1	2	8	10	3	7	0	0	0	0	14
TEAM													2	2				
Totals.....			24	51	5	15	19	31	5	34	39	19	72	13	10	2	9	200

TOTAL FG% 1st Half: 12-24 50.0% 2nd Half: 12-27 44.4% Game: 47.1% DEADBALL
 3-Pt. FG% 1st Half: 2-8 25.0% 2nd Half: 3-7 42.9% Game: 33.3% REBOUNDS
 F Throw % 1st Half: 7-14 50.0% 2nd Half: 12-17 70.6% Game: 61.3% 7

Officials: Mike Nance, Todd Austin, Tim Gattis
 Technical fouls: Lipscomb-None. Mizzou-None.

Attendance: 7415

Score by Periods	1st	2nd	Total
Lipscomb	35	25	60
Mizzou	33	39	72

THURS., JAN. 8, 2015

LSU AT **M**
67 **74**

PTS OFF TURNOVERS

	1	2	3	Tot
LSU	7	4	0	11
Mizzou	6	10	2	18

PTS IN PAINT

	1	2	3	Tot
LSU	8	16	0	24
Mizzou	16	18	2	36

2ND CHANCE PTS

	1	2	3	Tot
LSU	0	10	2	12
Mizzou	5	0	0	5

FAST BREAK PTS

	1	2	3	Tot
LSU	8	2	0	10
Mizzou	2	5	0	7

BENCH PTS

	1	2	3	Tot
LSU	17	11	2	30
Mizzou	8	9	0	17

LSU vs Mizzou

1/8/15 6:02 p.m. at Columbia, Mo. (Mizzou Arena)

VISITORS: LSU 11-3, 0-1

#	Player	tot-fg		3-pt		rebounds							min					
		fg	fga	fg	fga	ft	fta	of	de	tot	pf	tp		a	to	blks		
01	MARTIN, Jarell	f	3	10	0	1	3	7	2	5	7	5	9	2	2	2	2	35
25	MICKEY, Jordan	f	4	13	0	0	1	6	6	11	17	3	9	1	6	3	1	35
31	ODO, John	f	0	0	0	0	0	0	1	1	2	1	0	0	0	1	0	9
04	HORNSBY, Keith	g	6	15	3	8	2	2	1	7	8	2	17	3	1	0	3	43
05	GRAY, Josh	g	1	5	0	2	0	0	0	1	1	2	2	3	4	0	2	23
03	ROBINSON III, E.		0	0	0	0	0	0	1	1	2	0	0	0	1	0	0	6
15	PATTERSON, J.		5	9	1	5	0	0	0	0	0	0	11	1	0	0	1	25
20	BRIDGEWATER, B.		0	0	0	0	0	0	0	0	0	3	0	0	1	0	0	10
21	EPPS, Aaron		0	0	0	0	0	0	1	0	1	0	0	0	1	0	0	1
55	QUARTERMAN, Tim		5	14	2	6	7	8	3	3	6	2	19	2	3	0	2	38
TEAM													2	4	6			
Totals.....			24	66	6	22	13	23	17	33	50	18	67	12	19	6	1125	

TOTAL FG% 1st Half: 11-27 40.7% 2nd Half: 13-31 41.9% Game: 36.4% DEADBALL
 3-Pt. FG% 1st Half: 3-9 33.3% 2nd Half: 3-8 37.5% Game: 27.3% REBOUNDS
 F Throw % 1st Half: 5-8 62.5% 2nd Half: 6-10 60.0% Game: 56.5% 6

HOME TEAM: Mizzou 7-7, 1-0

#	Player	tot-fg		3-pt		rebounds							min												
		fg	fga	fg	fga	ft	fta	of	de	tot	pf	tp		a	to	blks									
03	Williams III, Johnat	f	8	17	0	1	5	8	4	6	10	4	21	0	2	1	0	36							
23	Gant, Jakeenan	f	2	3	0	0	0	0	0	2	2	1	4	0	1	0	0	14							
12	Wright, Namon	g	3	9	3	4	0	0	0	5	5	2	9	2	2	0	1	33							
14	Shamburger, Keith	g	2	6	2	6	4	5	0	5	5	3	10	4	1	0	1	37							
15	Clark, Wes	g	4	12	3	8	2	2	0	5	5	3	13	3	1	0	3	34							
04	Isabell, Tramaine		1	7	1	2	0	0	1	3	4	1	3	6	1	0	2	30							
05	Allen, D'Angelo		1	3	0	1	0	0	0	1	1	1	2	1	2	0	0	10							
44	Rosburg, Ryan		0	0	0	0	0	0	0	0	0	0	0	0	0	1	0	2							
45	Post, Keanau		6	10	0	0	0	0	5	2	7	4	12	0	4	3	0	29							
TEAM													2	7	15	10	29	39	19	74	16	14	5	7	225

TOTAL FG% 1st Half: 11-31 35.5% 2nd Half: 15-32 46.9% Game: 40.3% DEADBALL
 3-Pt. FG% 1st Half: 3-7 42.9% 2nd Half: 6-13 46.2% Game: 40.9% REBOUNDS
 F Throw % 1st Half: 2-4 50.0% 2nd Half: 2-2 100% Game: 73.3% 1

Officials: Dougs Shows, Karl Hess, Jamie Luckie
 Technical fouls: LSU-None. Mizzou-None.
 Attendance: 7509

Score by Periods	1st	2nd	OT	Total
LSU	30	35	2	67
Mizzou	27	38	9	74

2014-15 SEASON BOX SCORES

SATURDAY, JAN. 10, 2015

PTS OFF TURNOVERS

2ND CHANCE PTS

BENCH PTS



1 2 Tot
Mizzou 9 8 17
Auburn 3 11 14

1 2 Tot
Mizzou 13 9 22
Auburn 3 4 7

1 2 Tot
Mizzou 16 8 24
Auburn 6 17 23

PTS IN PAINT

1 2 Tot
Mizzou 14 14 28
Auburn 8 12 20

FAST BREAK PTS

1 2 Tot
Mizzou 0 0 0
Auburn 2 8 10

Mizzou vs Auburn

01/10/15 6:00 p.m. at Auburn Arena -- Auburn, Ala.

VISITORS: Mizzou 7-8, 1-1

#	Player	f	tot-fg		3-pt		rebounds					a	to	blks	min			
			fg	fga	fg	fga	ft	fta	of	de	tot					pf	tp	
03	Williams III, Johnat	f	4	9	0	2	1	2	5	3	8	4	9	3	5	0	1	26
23	Gant, Jakeenan	f	3	4	0	1	0	0	1	3	4	1	6	0	1	1	0	15
12	Wright, Namon	g	1	4	1	3	0	0	0	2	2	3	3	1	1	0	2	10
14	Shamburger, Keith	g	5	12	5	9	6	7	2	4	6	3	21	2	1	0	1	37
15	Clark, Wes	g	6	14	2	6	2	3	1	4	5	3	16	1	0	0	0	29
04	Isabell, Tramaire		3	7	2	5	4	4	0	2	2	4	12	4	2	0	0	36
05	Allen, D'Angelo		2	6	0	1	1	1	2	3	5	4	5	1	1	0	0	23
44	Rosburg, Ryan		1	3	0	0	1	2	0	1	1	2	3	0	0	2	0	16
45	Post, Keanau		2	2	0	0	0	1	4	0	4	3	4	0	3	0	0	8
TEAM									2 1 3									
Totals.....			27	61	10	27	15	20	17	23	40	27	79	12	14	3	4	200

TOTAL FG% 1st Half: 14-30 46.7% 2nd Half: 13-31 41.9% Game: 44.3% DEADBALL
 3-Pt. FG% 1st Half: 5-13 38.5% 2nd Half: 5-14 35.7% Game: 37.0% REBOUNDS
 F Throw % 1st Half: 7-10 70.0% 2nd Half: 8-10 80.0% Game: 75.0% 2

HOME TEAM: Auburn 9-6, 1-1

#	Player	f	tot-fg		3-pt		rebounds					a	to	blks	min			
			fg	fga	fg	fga	ft	fta	of	de	tot					pf	tp	
05	Bowers, Cinmeon	f	4	13	1	1	11	18	9	5	14	3	20	1	1	0	3	29
25	Granger, Jordon	f	3	4	2	3	0	0	1	2	3	3	8	1	2	1	1	27
01	Harrell, KT	g	5	6	3	3	1	2	0	0	0	1	14	4	2	0	0	33
12	Ross-Miller, KC	g	3	6	2	4	5	7	0	3	3	5	13	5	3	1	2	26
14	Mason, Antoine	g	3	10	1	4	0	0	0	2	2	2	7	2	0	0	1	24
00	Canada, Malcolm		2	3	1	1	5	6	0	4	4	4	10	2	1	0	2	17
04	Reed, Trayvon		1	2	0	0	0	0	0	2	2	0	2	0	0	1	0	9
13	Shamsid-Deen, Tahj		4	7	0	2	2	2	0	0	0	1	10	1	0	0	0	23
20	Thompson, Alex		0	1	0	1	1	2	0	1	1	3	1	0	0	0	0	10
31	Waddell, Devin		0	0	0	0	0	0	1	0	1	0	0	0	0	0	0	2
TEAM									1 1									
Totals.....			25	52	10	19	25	37	11	20	31	22	85	16	9	3	9	200

TOTAL FG% 1st Half: 12-24 50.0% 2nd Half: 13-28 46.4% Game: 48.1% DEADBALL
 3-Pt. FG% 1st Half: 6-13 46.2% 2nd Half: 4-6 66.7% Game: 52.6% REBOUNDS
 F Throw % 1st Half: 11-16 68.8% 2nd Half: 14-21 66.7% Game: 67.6% 5

Officials: Ron Groover, Olandis Poole, Glenn Tuitt
 Technical fouls: Mizzou-Wright, Namon. Auburn-None.
 Attendance: 8365

Score by Periods	1st	2nd	Total
Mizzou	40	39	79
Auburn	41	44	85

2014-15 INDIVIDUAL GAME-BY-GAME SCORE LINES

2 • DEUCE BELLO • 6-4 • 198 • G • JR

Opponent	Min	FG	3FG	FT	Off	Def	Tot	PF	A	TO	Blk	Stl	Pts
UMKC (11/14)	7	0-1	0-0	0-0	1	1	2	0	0	2	0	0	0
VALPO (11/16)	2	0-0	0-0	0-0	0	0	0	0	0	0	0	0	0
ORAL ROBERTS (11/19)	15	3-5	1-2	0-0	0	1	1	3	0	1	2	1	7
vs ARIZONA (11/24)	8	0-0	0-0	0-0	0	2	2	2	1	1	0	0	0
vs PURDUE (11/25)	16	3-3	0-0	2-4	0	2	2	4	0	2	0	1	8
vs CHAMINADE (11/26)	9	2-3	1-1	0-1	0	0	0	0	0	0	0	0	5
SEMO (12/2)	13	1-2	0-0	0-2	0	1	1	5	0	0	1	0	2
at OKLAHOMA (12/5)	15	1-1	1-1	0-0	0	2	2	3	0	1	0	0	3
ELON (12/11)	14	2-3	1-2	0-1	1	1	2	3	1	2	0	0	5
XAVIER (12/13)	10	0-0	0-0	0-0	0	1	1	0	0	1	0	2	0
vs ILLINOIS (12/20)	9	1-2	0-1	0-2	0	1	1	1	0	0	0	0	2
vs OKLA. ST. (12/30)	DNP												
LIPSCOMB (1/3)	DNP												
LSU (1/3)	DNP												
at AUBURN (1/10)	DNP												
at KENTUCKY (1/13)													
TENNESSEE (1/17)													
at TEXAS A&M (1/21)													
ARKANSAS (1/24)													
KENTUCKY (1/29)													
OLE MISS (1/31)													
at ALABAMA (2/4)													
TEXAS A&M (2/7)													
at S. CAROLINA (2/10)													
MISSISSIPPI ST. (2/14)													
at ARKANSAS (2/18)													
at VANDERBILT (2/21)													
FLORIDA (2/24)													
at GEORGIA (2/28)													
AUBURN (3/3)													
at MISS. ST. (3/7)													

3 • JOHNATHAN WILLIAMS, III • 6-9 • 225 • F • SO

Opponent	Min	FG	3FG	FT	Off	Def	Tot	PF	A	TO	Blk	Stl	Pts
UMKC (11/14) *	26	3-7	0-0	0-0	2	3	5	5	0	2	4	0	6
VALPO (11/16) *	27	5-11	0-2	0-0	1	5	6	3	0	1	0	0	10
ORAL ROBERTS (11/19) *	24	2-3	2-2	4-6	0	3	3	3	2	2	1	0	10
vs ARIZONA (11/24) *	28	5-11	0-2	1-4	1	4	5	3	0	3	1	0	11
vs PURDUE (11/25)	29	3-7	1-3	7-9	2	3	5	2	1	3	0	0	14
vs CHAMINADE (11/26) *	7	1-2	0-0	2-2	0	2	2	1	1	1	0	0	4
SEMO (12/2) *	33	5-9	0-2	8-14	4	7	11	2	1	3	1	0	18
at OKLAHOMA (12/5) *	30	6-11	1-1	3-4	4	4	8	3	0	5	1	2	16
ELON (12/11) *	34	3-10	1-3	9-11	2	6	8	1	3	3	0	1	16
XAVIER (12/13) *	34	5-10	0-2	7-11	5	4	9	4	0	4	0	0	17
vs ILLINOIS (12/20) *	32	6-13	1-3	2-3	1	7	8	2	1	2	1	1	15
vs OKLA. ST. (12/30) *	39	8-13	2-3	4-7	4	5	9	4	1	3	0	1	22
LIPSCOMB (1/3) *	25	4-9	0-0	8-14	3	7	10	4	1	3	0	0	16
LSU (1/3) *	36	8-17	0-1	5-8	4	6	10	4	0	2	1	0	21
at AUBURN (1/10) *	26	4-9	0-2	1-2	5	3	8	4	3	5	0	1	9
at KENTUCKY (1/13)													
TENNESSEE (1/17)													
at TEXAS A&M (1/21)													
ARKANSAS (1/24)													
KENTUCKY (1/29)													
OLE MISS (1/31)													
at ALABAMA (2/4)													
TEXAS A&M (2/7)													
at S. CAROLINA (2/10)													
MISSISSIPPI ST. (2/14)													
at ARKANSAS (2/18)													
at VANDERBILT (2/21)													
FLORIDA (2/24)													
at GEORGIA (2/28)													
AUBURN (3/3)													
at MISS. ST. (3/7)													

4 • TRAMAINE ISABELL • 6-0 • 180 • G • FR

Opponent	Min	FG	3FG	FT	Off	Def	Tot	PF	A	TO	Blk	Stl	Pts
UMKC (11/14)	12	3-7	1-5	1-2	0	0	0	4	1	3	0	1	8
VALPO (11/16)	12	1-5	0-2	2-2	0	1	1	2	0	0	0	0	4
ORAL ROBERTS (11/19)	8	1-4	1-2	0-0	0	0	0	0	0	0	0	0	3
vs ARIZONA (11/24)	9	0-2	0-2	0-0	0	0	0	0	1	1	0	0	0
vs PURDUE (11/25)	15	1-7	1-3	2-2	1	1	2	3	2	0	0	2	5
vs CHAMINADE (11/26)	18	4-4	0-0	1-1	0	4	4	3	4	2	0	0	9
SEMO (12/2)	25	2-6	2-3	2-2	0	2	2	0	3	2	0	0	8
at OKLAHOMA (12/5)	5	1-3	0-2	0-0	0	0	0	1	1	0	0	1	2
ELON (12/11)	13	2-6	1-3	0-1	0	0	0	0	0	0	0	0	5
XAVIER (12/13)	11	1-3	0-1	0-0	0	0	0	1	0	2	0	1	2
vs ILLINOIS (12/20)	7	0-1	0-1	0-0	0	0	0	0	1	0	0	0	0
vs OKLA. ST. (12/30)	14	2-5	1-2	0-0	0	0	0	2	1	3	0	0	5
LIPSCOMB (1/3)	23	4-8	1-3	5-6	0	3	3	1	0	0	0	2	14
LSU (1/3)	30	1-7	1-2	0-0	1	3	4	1	6	1	0	2	3
at AUBURN (1/10)	36	3-7	2-5	4-4	0	2	2	4	4	2	0	0	12
at KENTUCKY (1/13)													
TENNESSEE (1/17)													
at TEXAS A&M (1/21)													
ARKANSAS (1/24)													
KENTUCKY (1/29)													
OLE MISS (1/31)													
at ALABAMA (2/4)													
TEXAS A&M (2/7)													
at S. CAROLINA (2/10)													
MISSISSIPPI ST. (2/14)													
at ARKANSAS (2/18)													
at VANDERBILT (2/21)													
FLORIDA (2/24)													
at GEORGIA (2/28)													
AUBURN (3/3)													
at MISS. ST. (3/7)													

5 • D'ANGELO ALLEN • 6-7 • 220 • F • FR

Opponent	Min	FG	3FG	FT	Off	Def	Tot	PF	A	TO	Blk	Stl	Pts
UMKC (11/14)	15	0-0	0-0	0-0	0	1	1	4	1	0	0	1	0
VALPO (11/16)	13	2-3	0-1	0-0	2	1	3	2	1	0	1	0	4
ORAL ROBERTS (11/19)	14	1-2	0-0	0-2	2	2	4	2	0	1	0	0	2
vs ARIZONA (11/24)	13	1-3	0-0	0-0	1	2	3	2	0	0	0	0	2
vs PURDUE (11/25)	18	1-5	0-1	0-0	2	1	3	2	1	1	1	0	2
vs CHAMINADE (11/26)	17	1-4	0-1	1-2	1	2	3	1	1	1	1	1	3
SEMO (12/2)	16	1-2	1-1	0-2	0	5	5	2	0	1	0	2	3
at OKLAHOMA (12/5)	19	1-5	0-0	0-0	0	3	3	2	2	2	0	0	2
ELON (12/11)	21	5-7	0-0	2-2	4	3	7	3	0	0	0	0	12
XAVIER (12/13)	11	3-3	0-0	2-2	0	1	1	0	0	0	0	1	8
vs ILLINOIS (12/20)	20	3-4	2-2	0-0	0	5	5	0	1	1	0	0	8
vs OKLA. ST. (12/30)	16	2-3	0-0	0-0	2	3	5	3	0	1	0	0	4
LIPSCOMB (1/3)	23	2-4	0-0	3-4	0	3	3	3	1	0	1	1	7
LSU (1/3)	10	1-3	0-1	0-0	0	1	1	1	1	2	0	0	2
at AUBURN (1/10)	23	2-6	0-1	1-1	2	3	5	4	1	1	0	0	5
at KENTUCKY (1/13)													
TENNESSEE (1/17)													
at TEXAS A&M (1/21)													
ARKANSAS (1/24)													
KENTUCKY (1/29)													
OLE MISS (1/31)													
at ALABAMA (2/4)													
TEXAS A&M (2/7)													
at S. CAROLINA (2/10)													
MISSISSIPPI ST. (2/14)													
at ARKANSAS (2/18)													
at VANDERBILT (2/21)													
FLORIDA (2/24)													
at GEORGIA (2/28)													
AUBURN (3/3)													
at MISS. ST. (3/7)													

2014-15 INDIVIDUAL GAME-BY-GAME SCORE LINES

12 • NAMON WRIGHT • 6-5 • 200 • G • FR

Opponent	Min	FG	3FG	FT	Off	Def	Tot	PF	A	TO	Blk	Stl	Pts
UMKC (11/14)	7	1-3	0-2	0-0	0	1	1	0	0	0	0	0	2
VALPO (11/16)	12	0-2	0-1	0-0	0	2	2	0	1	0	0	1	0
ORAL ROBERTS (11/19)	10	1-3	0-1	0-0	0	2	2	1	2	0	0	0	2
vs ARIZONA (11/24)	14	1-3	1-2	0-0	0	4	4	1	0	2	0	0	3
vs PURDUE (11/25)	20	3-7	2-4	0-0	0	2	2	3	0	1	0	2	8
vs Chaminade (11/26)	25	7-7	4-4	3-4	0	6	6	3	0	2	0	0	21
SEMO (12/2) *	14	2-5	0-2	0-0	0	0	0	2	0	0	0	0	4
at OKLAHOMA (12/5) *	21	5-8	2-3	0-0	0	0	0	2	1	1	0	2	12
ELON (12/11) *	14	2-3	2-2	0-0	0	0	0	4	0	1	0	0	6
XAVIER (12/13) *	15	1-4	0-3	0-0	0	2	2	3	1	1	1	0	2
vs ILLINOIS (12/20)	11	1-1	1-1	0-0	0	0	0	1	1	1	0	0	3
vs OKLA. ST. (12/30)	16	2-3	2-3	0-2	0	3	3	2	0	1	1	0	6
LIPSCOMB (1/3)	16	0-3	0-3	0-0	0	2	2	0	1	1	0	1	0
LSU (1/3) *	33	3-9	3-4	0-0	0	5	5	2	2	2	0	1	9
at AUBURN (1/10) *	10	1-4	1-3	0-0	0	2	2	3	1	1	0	2	3
at KENTUCKY (1/13)													
TENNESSEE (1/17)													
at TEXAS A&M (1/21)													
ARKANSAS (1/24)													
KENTUCKY (1/29)													
OLE MISS (1/31)													
at ALABAMA (2/4)													
TEXAS A&M (2/7)													
at S. CAROLINA (2/10)													
MISSISSIPPI ST. (2/14)													
at ARKANSAS (2/18)													
at VANDERBILT (2/21)													
FLORIDA (2/24)													
at GEORGIA (2/28)													
AUBURN (3/3)													
at MISS. ST. (3/7)													

13 • MONTAQUE GILL-CAESAR • 6-6 • 215 • G • FR

Opponent	Min	FG	3FG	FT	Off	Def	Tot	PF	A	TO	Blk	Stl	Pts
UMKC (11/14) *	36	9-23	1-6	2-3	4	3	7	1	0	1	0	0	21
VALPO (11/16) *	28	4-13	1-6	0-0	1	4	5	2	1	1	0	1	9
ORAL ROBERTS (11/19) *	30	5-11	4-7	5-6	1	3	4	3	0	1	0	0	19
vs ARIZONA (11/24) *	29	2-7	1-2	8-12	2	2	4	3	0	1	0	0	13
vs PURDUE (11/25) *	16	1-6	0-2	0-0	1	1	2	2	1	1	0	0	2
vs Chaminade (11/26) *	26	5-11	4-8	4-4	1	5	6	4	0	2	0	3	18
SEMO (12/2) *	31	5-9	2-3	3-3	0	2	2	2	1	2	0	2	15
at OKLAHOMA (12/5) *	30	6-16	2-5	1-2	1	5	6	1	0	1	0	2	15
ELON (12/11) *	28	2-6	2-2	4-4	0	2	2	3	0	2	1	0	10
XAVIER (12/13) *	28	2-10	0-3	0-0	0	0	0	3	0	2	0	1	4
vs ILLINOIS (12/20) *	31	3-8	0-2	2-2	0	3	3	1	0	4	0	2	8
vs OKLA. ST. (12/30) *	30	3-8	2-5	7-8	1	4	5	2	1	2	1	0	15
LIPSCOMB (1/3) *	9	0-2	0-2	0-0	0	2	2	0	1	3	0	0	0
LSU (1/3)	DNP												
at AUBURN (1/10)	DNP												
at KENTUCKY (1/13)													
TENNESSEE (1/17)													
at TEXAS A&M (1/21)													
ARKANSAS (1/24)													
KENTUCKY (1/29)													
OLE MISS (1/31)													
at ALABAMA (2/4)													
TEXAS A&M (2/7)													
at S. CAROLINA (2/10)													
MISSISSIPPI ST. (2/14)													
at ARKANSAS (2/18)													
at VANDERBILT (2/21)													
FLORIDA (2/24)													
at GEORGIA (2/28)													
AUBURN (3/3)													
at MISS. ST. (3/7)													

14 • KEITH SHAMBURGER • 5-11 • 170 • G • SR

Opponent	Min	FG	3FG	FT	Off	Def	Tot	PF	A	TO	Blk	Stl	Pts
UMKC (11/14) *	31	3-6	2-4	0-0	3	3	6	4	3	4	1	0	8
VALPO (11/16)	37	1-2	1-2	2-2	0	1	1	1	3	4	0	0	5
ORAL ROBERTS (11/19) *	35	2-4	1-3	4-6	1	3	4	2	3	0	0	4	9
vs ARIZONA (11/24) *	31	3-6	0-3	5-6	0	2	2	1	3	4	0	1	11
vs PURDUE (11/25) *	24	3-4	2-3	3-3	0	0	0	2	2	3	0	1	11
vs Chaminade (11/26) *	30	0-6	0-5	3-3	0	1	1	3	5	3	0	2	3
SEMO (12/2) *	39	4-5	3-4	0-0	1	1	2	3	3	4	0	0	11
at OKLAHOMA (12/5) *	30	2-3	1-1	0-0	0	2	2	2	3	3	0	0	5
ELON (12/11) *	36	3-6	1-3	9-9	0	4	4	3	5	3	1	1	16
XAVIER (12/13) *	36	3-9	0-2	1-1	0	3	3	3	3	0	0	3	7
vs ILLINOIS (12/20) *	32	1-5	1-4	2-2	2	3	5	0	1	0	1	0	5
vs OKLA. ST. (12/30) *	40	0-5	0-3	0-0	1	3	4	0	5	0	0	1	0
LIPSCOMB (1/3) *	37	6-9	3-5	0-0	0	3	3	2	2	3	0	1	15
LSU (1/3) *	37	2-6	2-6	4-5	0	5	5	3	4	1	0	1	10
at AUBURN (1/10) *	37	5-12	5-9	6-7	2	4	6	3	2	1	0	1	21
at KENTUCKY (1/13)													
TENNESSEE (1/17)													
at TEXAS A&M (1/21)													
ARKANSAS (1/24)													
KENTUCKY (1/29)													
OLE MISS (1/31)													
at ALABAMA (2/4)													
TEXAS A&M (2/7)													
at S. CAROLINA (2/10)													
MISSISSIPPI ST. (2/14)													
at ARKANSAS (2/18)													
at VANDERBILT (2/21)													
FLORIDA (2/24)													
at GEORGIA (2/28)													
AUBURN (3/3)													
at MISS. ST. (3/7)													

15 • WES CLARK • 6-0 • 185 • G • SO

Opponent	Min	FG	3FG	FT	Off	Def	Tot	PF	A	TO	Blk	Stl	Pts
UMKC (11/14) *	34	4-14	1-6	4-6	0	3	3	3	5	2	0	6	13
VALPO (11/16) *	32	4-8	2-3	6-6	1	5	6	2	2	4	1	2	16
ORAL ROBERTS (11/19) *	33	5-10	3-4	1-1	1	2	3	4	9	2	0	2	14
vs ARIZONA (11/24) *	29	1-6	1-2	0-0	0	1	1	0	1	3	0	1	3
vs PURDUE (11/25) *	29	3-10	1-4	0-0	0	4	4	4	1	3	1	1	7
vs Chaminade (11/26) *	35	0-7	0-2	2-2	1	8	9	2	4	2	0	3	2
SEMO (12/2)	DNP												
at OKLAHOMA (12/5)	19	3-7	2-3	0-0	0	0	0	1	3	1	0	0	8
ELON (12/11)	18	3-9	0-3	0-0	0	3	3	5	1	1	0	1	6
XAVIER (12/13)	20	1-4	0-1	1-2	2	2	4	0	1	0	0	0	3
vs ILLINOIS (12/20) *	31	4-9	1-5	2-2	0	5	5	1	3	5	0	0	11
vs OKLA. ST. (12/30) *	36	3-8	0-3	6-8	0	0	0	5	1	3	0	2	12
LIPSCOMB (1/3) *	36	3-9	1-2	1-2	0	2	2	2	6	0	1	4	8
LSU (1/3) *	34	4-12	3-8	2-2	0	5	5	3	3	1	0	3	13
at AUBURN (1/10) *	29	6-14	2-6	2-3	1	4	5	3	1	0	0	0	16
at KENTUCKY (1/13)													
TENNESSEE (1/17)													
at TEXAS A&M (1/21)													
ARKANSAS (1/24)													
KENTUCKY (1/29)													
OLE MISS (1/31)													
at ALABAMA (2/4)													
TEXAS A&M (2/7)													
at S. CAROLINA (2/10)													
MISSISSIPPI ST. (2/14)													
at ARKANSAS (2/18)													
at VANDERBILT (2/21)													
FLORIDA (2/24)													
at GEORGIA (2/28)													
AUBURN (3/3)													
at MISS. ST. (3/7)													

2014-15 INDIVIDUAL GAME-BY-GAME SCORE LINES

23 • JAKEENAN GANT • 6-8 • 207 • F • FR

Opponent	Min	FG	3FG	FT	Off	Def	Tot	PF	A	TO	Blk	Stl	Pts
UMKC (11/14)	DNP												
VALPO (11/16)	DNP												
ORAL ROBERTS (11/19)	DNP												
vs ARIZONA (11/24)	DNP												
vs PURDUE (11/25)	DNP												
vs CHAMINADE (11/26)	DNP												
SEMO (12/2)	DNP												
at OKLAHOMA (12/5)	DNP												
ELON (12/11)	DNP												
XAVIER (12/13)	15	4-8	1-4	4-4	1	0	1	3	0	1	2	1	13
vs ILLINOIS (12/20)	16	3-6	0-2	1-2	2	0	2	2	0	0	1	1	7
vs OKLA. ST. (12/30)*	22	3-6	0-1	0-1	2	2	4	2	0	0	0	1	6
LIPSCOMB (1/3)*	12	1-1	0-0	1-2	0	2	2	2	1	0	0	0	3
LSU (1/3)*	14	2-3	0-0	0-0	0	2	2	1	0	1	0	0	4
at AUBURN (1/10)*	15	3-4	0-1	0-0	1	3	4	1	0	1	1	0	6
at KENTUCKY (1/13)													
TENNESSEE (1/17)													
at TEXAS A&M (1/21)													
ARKANSAS (1/24)													
KENTUCKY (1/29)													
OLE MISS (1/31)													
at ALABAMA (2/4)													
TEXAS A&M (2/7)													
at S. CAROLINA (2/10)													
MISSISSIPPI ST. (2/14)													
at ARKANSAS (2/18)													
at VANDERBILT (2/21)													
FLORIDA (2/24)													
at GEORGIA (2/28)													
AUBURN (3/3)													
at MISS. ST. (3/7)													

42 • HAYDEN BARNARD • 6-10 • 225 • F • RS FR

Opponent	Min	FG	3FG	FT	Off	Def	Tot	PF	A	TO	Blk	Stl	Pts
UMKC (11/14)	DNP												
VALPO (11/16)	DNP												
ORAL ROBERTS (11/19)	DNP												
vs ARIZONA (11/24)	DNP												
vs PURDUE (11/25)	DNP												
vs CHAMINADE (11/26)	DNP												
SEMO (12/2)	DNP												
at OKLAHOMA (12/5)	DNP												
ELON (12/11)	DNP												
XAVIER (12/13)	DNP												
vs ILLINOIS (12/20)	DNP												
vs OKLA. ST. (12/30)	DNP												
LIPSCOMB (1/3)	DNP												
LSU (1/3)	DNP												
at AUBURN (1/10)	DNP												
at KENTUCKY (1/13)													
TENNESSEE (1/17)													
at TEXAS A&M (1/21)													
ARKANSAS (1/24)													
KENTUCKY (1/29)													
OLE MISS (1/31)													
at ALABAMA (2/4)													
TEXAS A&M (2/7)													
at S. CAROLINA (2/10)													
MISSISSIPPI ST. (2/14)													
at ARKANSAS (2/18)													
at VANDERBILT (2/21)													
FLORIDA (2/24)													
at GEORGIA (2/28)													
AUBURN (3/3)													
at MISS. ST. (3/7)													

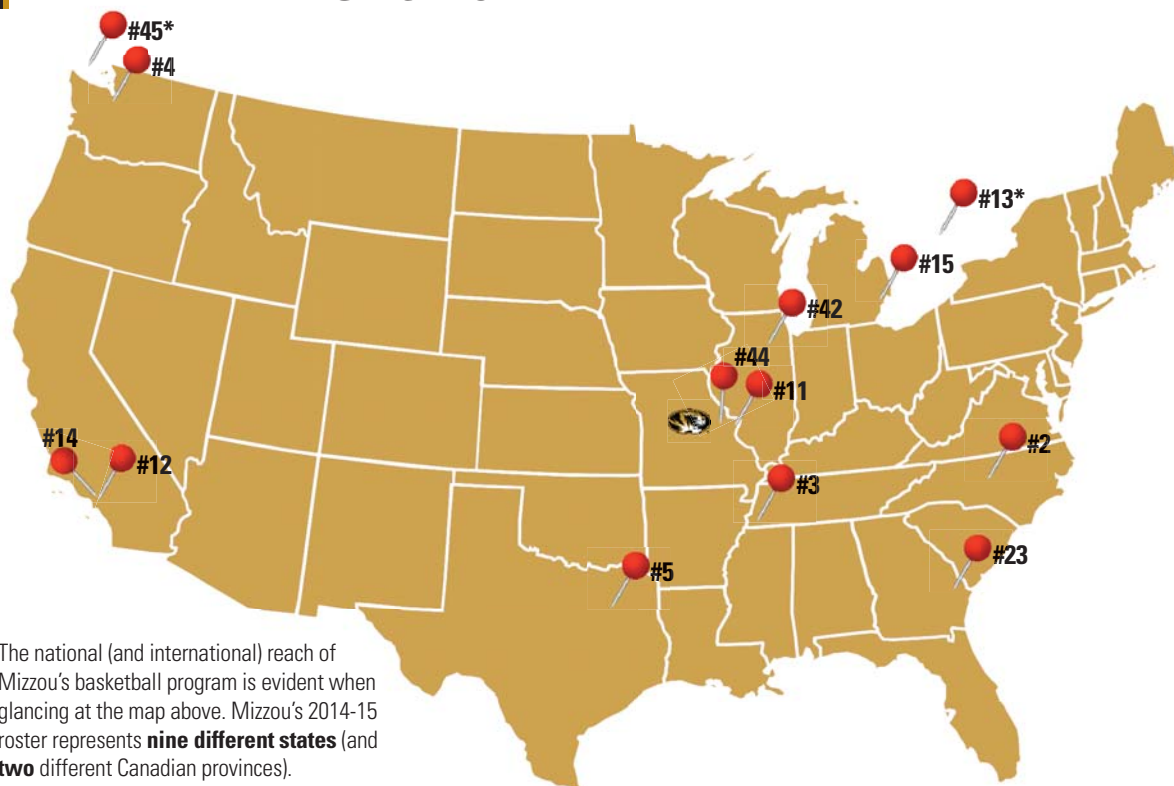
44 • RYAN ROSBURG • 6-10 • 264 • F • JR

Opponent	Min	FG	3FG	FT	Off	Def	Tot	PF	A	TO	Blk	Stl	Pts
UMKC (11/14)*	27	1-1	0-0	1-5	3	3	6	2	0	1	1	1	3
VALPO (11/16)*	26	1-3	0-0	2-4	3	5	8	2	1	0	2	0	4
ORAL ROBERTS (11/19)*	20	3-4	0-0	0-3	4	2	6	4	0	0	0	0	6
vs ARIZONA (11/24)*	14	2-4	0-0	0-0	1	4	5	5	0	0	1	0	4
vs PURDUE (11/25)*	23	0-5	0-0	0-0	1	1	2	2	1	1	1	0	0
vs Chaminade (11/26)*	24	4-5	0-0	1-7	5	0	5	2	0	4	1	0	9
SEMO (12/2)*	22	2-5	0-0	0-0	1	2	3	2	2	0	0	0	4
at OKLAHOMA (12/5)*	26	0-3	0-0	0-2	2	1	3	1	1	2	0	0	0
ELON (12/11)*	19	1-1	0-0	0-2	2	5	7	3	0	0	1	0	2
XAVIER (12/13)*	16	1-3	0-0	0-0	1	0	1	2	1	1	0	0	2
vs ILLINOIS (12/20)*	11	0-1	0-0	0-0	1	1	2	1	0	1	1	0	0
vs OKLA. ST. (12/30)	12	1-2	0-0	0-0	1	1	2	3	0	0	0	2	2
LIPSCOMB (1/3)	5	1-1	0-0	0-2	0	0	0	2	0	0	0	0	2
LSU (1/3)	2	0-0	0-0	0-0	0	0	0	0	0	0	1	0	0
at AUBURN (1/10)	16	1-3	0-0	1-2	0	1	1	2	0	0	2	0	3
at KENTUCKY (1/13)													
TENNESSEE (1/17)													
at TEXAS A&M (1/21)													
ARKANSAS (1/24)													
KENTUCKY (1/29)													
OLE MISS (1/31)													
at ALABAMA (2/4)													
TEXAS A&M (2/7)													
at S. CAROLINA (2/10)													
MISSISSIPPI ST. (2/14)													
at ARKANSAS (2/18)													
at VANDERBILT (2/21)													
FLORIDA (2/24)													
at GEORGIA (2/28)													
AUBURN (3/3)													
at MISS. ST. (3/7)													

45 • KEANAU POST • 6-11 • 270 • F • SR

Opponent	Min	FG	3FG	FT	Off	Def	Tot	PF	A	TO	Blk	Stl	Pts
UMKC (11/14)	5	0-1	0-0	0-0	2	2	4	2	0	2	0	1	0
VALPO (11/16)	11	2-3	0-0	0-0	1	2	3	2	0	1	1	0	4
ORAL ROBERTS (11/19)	11	2-3	0-0	2-5	0	3	3	2	0	0	0	0	6
vs ARIZONA (11/24)	25	1-2	0-0	4-4	2	5	7	3	1	2	0	0	6
vs PURDUE (11/25)	10	1-1	0-0	2-2	0	0	0	5	0	0	0	0	4
vs Chaminade (11/26)	9	0-1	0-0	0-0	2	0	2	1	0	0	1	1	0
SEMO (12/2)	7	0-1	0-0	0-0	0	1	1	2	0	0	0	0	0
at OKLAHOMA (12/5)	5	0-2	0-0	0-0	0	0	0	0	0	0	0	0	0
ELON (12/11)	3	0-0	0-0	0-0	0	0	0	0	0	0	0	0	0
XAVIER (12/13)	4	0-0	0-0	0-0	0	0	0	0	0	0	0	0	0
vs ILLINOIS (12/20)	DNP												
vs OKLA. ST. (12/30)	DNP												
LIPSCOMB (1/3)	14	3-5	0-0	1-1	2	8	10	3	0	0	0	0	7
LSU (1/3)	29	6-10	0-0	0-0	5	2	7	4	0	4	3	0	12
at AUBURN (1/10)	8	2-2	0-0	0-1	4	0	4	3	0	3	0	0	4
at KENTUCKY (1/13)													
TENNESSEE (1/17)													
at TEXAS A&M (1/21)													
ARKANSAS (1/24)													
KENTUCKY (1/29)													
OLE MISS (1/31)													
at ALABAMA (2/4)													
TEXAS A&M (2/7)													
at S. CAROLINA (2/10)													
MISSISSIPPI ST. (2/14)													
at ARKANSAS (2/18)													
at VANDERBILT (2/21)													
FLORIDA (2/24)													
at GEORGIA (2/28)													
AUBURN (3/3)													
at MISS. ST. (3/7)													

WHERE ARE THE TIGERS FROM?



The national (and international) reach of Mizzou's basketball program is evident when glancing at the map above. Mizzou's 2014-15 roster represents **nine different states** (and **two** different Canadian provinces).

HOME AWAY FROM HOME
#45 Keanau Post
2,139 miles from home

DOING LAUNDRY AT HOME
#44 Ryan Rosburg
104 miles from home

MIGHT VISIT ON THE WEEKENDS
#3 Johnathan Williams, III
393 miles from home

Hometown (distance from Columbia)

#2 Deuce Bello • G • RS JR
Greensboro, N.C. (872 miles)

#3 Johnathan Williams, III • F • SO
Memphis, Tenn. (393 miles)

#4 Tramaine Isabell • G • FR
Seattle, Wash. (1,961 miles)

#5 D'Angelo Allen • F • FR
Dallas, Texas (581 miles)

#11 Jimmy Barton • G • SO
St. Louis, Mo. (125 miles)

#12 Namon Wright • G • FR
Los Angeles, Calif. (1,743 miles)

#13 Montaque Gill-Caesar • G • FR
Vaughn, Ontario (876 miles)

#14 Keith Shamburger • G • RS SR
Los Angeles, Calif. (1,743 miles)

#15 Wes Clark • G • SO
Detroit, Mich. (638 miles)

#23 Jakeenan Gant • F • FR
Springfield, Ga. (914 miles)

#42 Hayden Bamard • F • RS FR
Aurora, Ill. (364 miles)

#44 Ryan Rosburg • F • JR
Chesterfield, Mo. (104 miles)

#45 Keanau Post • F • SR
Victoria, British Columbia (2,139 miles)

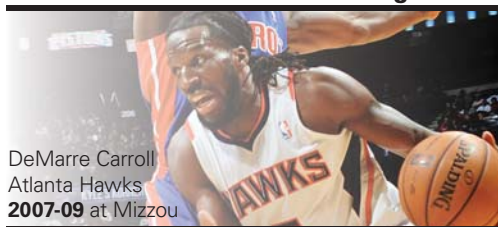
* Combined maps of the United States of America and Canada are surprisingly hard to find.

** However, the term "Great White North" seems rather appropriate now.



WHERE ARE THE TIGERS NOW?

Current #MizzouMade NBA Tigers



DeMarre Carroll
Atlanta Hawks
2007-09 at Mizzou



Jordan Clarkson
L.A. Lakers
2013-14 at Mizzou



Phil Pressey
Boston Celtics
2010-13 at Mizzou

Mizzou In The NBA Draft

Year	Name	Team	Round	Pick
2014	Jordan Clarkson	Washington Wizards (To L.A. Lakers)	2nd	46th
2013	Alex Oriakhi	Phoenix Suns	2nd	57th
2012	Kim English	Detroit Pistons	2nd	44th
	Marcus Denmon	San Antonio Spurs	2nd	59th
2009	DeMarre Carroll	Memphis Grizzlies	1st	27th
2005	Linas Kleiza	Portland Trailblazers (To Denver Nuggets)	1st	27th
2004	Rickey Paulding	Detroit Pistons	2nd	54th
2002	Kareem Rush	Toronto Raptors (To L.A. Lakers)	1st	20th
2000	Keyon Dooling	Orlando Magic (To L.A. Clippers)	1st	10th
1994	Jevon Crudup	Detroit Pistons	2nd	48th
1992	Anthony Peeler	Los Angeles Lakers	1st	15th
1991	Doug Smith	Dallas Mavericks	1st	5th
1989	Byron Irvin	Portland Trail Blazers	1st	22nd
	Gary Leonard	Minnesota Timberwolves	2nd	34th
1988	Derrick Chievous	Houston Rockets	1st	16th
1986	Dan Bingenheimer	Golden St. Warriors	4th	75th
	Jeff Strong	Milwaukee Bucks	7th	151st
1985	Greg Cavener	Golden St. Warriors	5th	95th
	Malcolm Thomas	Los Angeles Clippers	6th	121st
1984	Prince Bridges	Detroit Pistons	5th	103rd

Year	Name	Team	Round	Pick
1983	Steve Stipanovich	Indiana Pacers	1st	2nd
	Jon Sundvold	Seattle Supersonics	1st	26th
1982	Ricky Frazier	Chicago Bulls	2nd	26th
	Marvin McCrary	Phoenix Suns	5th	108th
1981	Curtis Berry	Kansas City Kings	3rd	58th
1980	Larry Drew	Detroit Pistons	1st	17th
1978	Clay Johnson	Portland Trail Blazers	5th	110th
1977	Kim Anderson	Portland Trail Blazers	2nd	28th
	Jim Kennedy	Detroit Pistons	5th	102nd
	Scott Sims	San Antonio Spurs	5th	103rd
1976	Willie Smith	Chicago Bulls	2nd	18th
1974	Al Eberhard	Detroit Pistons	1st	15th
	Gary Link	Buffalo Braves	6th	99th
1973	John Brown	Atlanta Hawks	1st	10th
	Mike Jeffries	KC-Omaha Kings	7th	110th
1971	Henry Smith	Milwaukee Bucks	4th	68th
1970	Don Tomlinson	Cleveland Cavaliers	14th	209th
1968	Gene Jones	Milwaukee Bucks	10th	134th
1967	Ron Coleman	San Diego	9th	102nd
1964	Ray Bob Carey	San Francisco	—	—
1961	Charles Henke	Los Angeles Lakers	—	—
1956	Norm Stewart	St. Louis	—	—
1955	Bob Reiter	Ft. Wayne	—	—
1952	Bill Stauffer	Boston Celtics	—	—

Tigers in the NBA D-League

Name	Team	At Mizzou
Jabari Brown	Los Angeles D-Fenders	2012-14
Stephon Hannah	Reno Bighorns	2006-08

Tigers in Europe

Name	Team	At Mizzou
Jason Conley	Kouvot (Finland)	2003-05
Marcus Denmon	New Basket Brindisi (Italy)	2008-12
Linas Kleiza	Emporio Armani Milano (Italy)	2003-05
Alex Oriakhi	Pieno Zvaigzdes (Lithuania)	2012-13
Rickey Paulding	EWE Baskets Oldenburg (Germany)	2000-04
Zaire Taylor	Magixx KidsRights Nijmegen (Netherlands)	2008-10
J.T. Tiller	Landstede Basketbal (Netherlands)	2006-10
Kim English	Cholet Basket (France)	2008-12

MIZZOU TV/RADIO CHART

#2



DEUCE BELLO
6-4 | 198 | G | RS JR
GREENSBORO, N.C.
BAYLOR

#3



JOHNATHAN WILLIAMS, III
6-9 | 225 | F | SO
MEMPHIS, TENN.
SOUTHWIND HS

#4



TRAMAINE ISABELL
6-0 | 180 | G | FR
SEATTLE, WASH.
GARFIELD HS

#5



D'ANGELO ALLEN
6-7 | 220 | F | FR
DALLAS, TEXAS
KIMBALL HS

#11



JIMMY BARTON
5-9 | 160 | G | SO
ST. LOUIS, MO.
HOUSTON BAPTIST

#12



NAMON WRIGHT
6-5 | 200 | G | FR
LOS ANGELES, CALIF.
PACIFIC HILLS

#13



MONTAUE GILL-CAESAR
6-6 | 215 | G | FR
VAUGHAN, ONTARIO
HUNTINGTON PREP (W. VA.)

#14



KEITH SHAMBURGER
5-11 | 170 | G | RS SR
LOS ANGELES, CALIF.
HAWAII

#15



WES CLARK
6-0 | 185 | G | SO
DETROIT, MICH.
ROMULUS HS

#23



JAKEENAN GANT
6-8 | 207 | F | FR
SPRINGFIELD, GA.
EFFINGHAM COUNTY HS

#42



HAYDEN BARNARD
6-10 | 225 | F | RS FR
AURORA, ILL.
METEA VALLEY HS

#44



RYAN ROSBURG
6-10 | 264 | F | JR
CHESTERFIELD, MO.
MARQUETTE HS

#45



KEANAU POST
6-11 | 270 | F | SR
VICTORIA, BRITISH COLUMBIA
SOUTHWESTERN ILLINOIS C.C.



**HEAD COACH
KIM ANDERSON**
MISSOURI ('79, '81)
SEDALIA, MO.



**ASSOC. HEAD COACH
TIM FULLER**
WAKE FOREST ('00)
WOODBIDGE, VA.



**ASST. COACH
ROB FULFORD**
MARSHALL ('97)
MULLENS, W. VA.



**ASST. COACH
BRAD LOOS**
AUSTIN PEAY ST. ('02)
CLARKSVILLE, TENN.