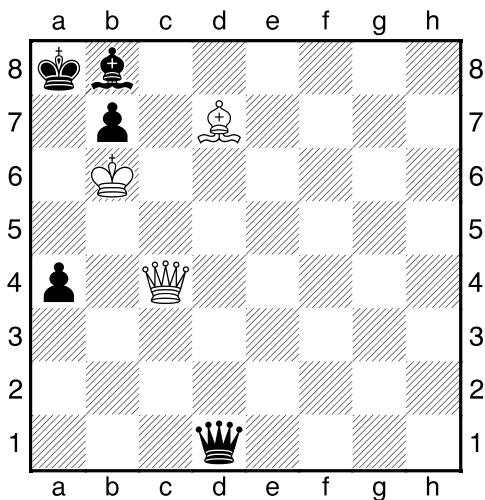
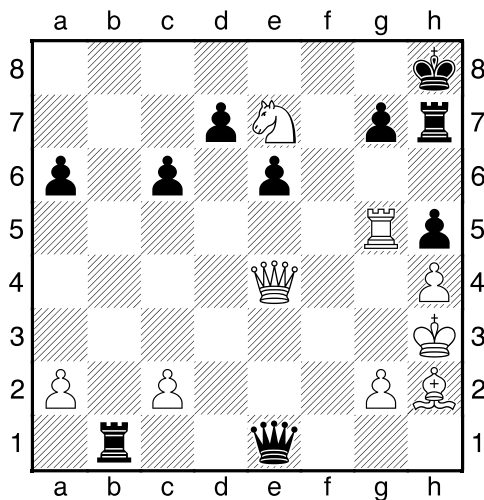


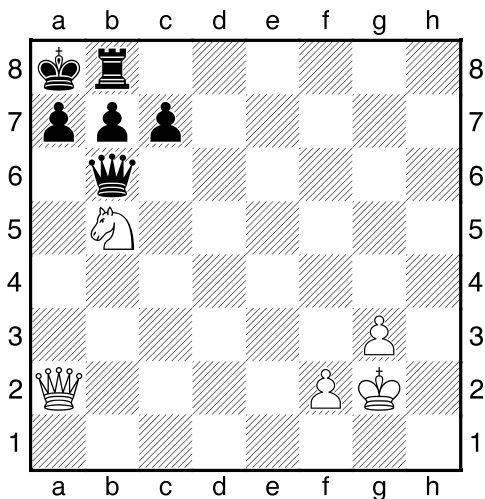
Bílý na tahu



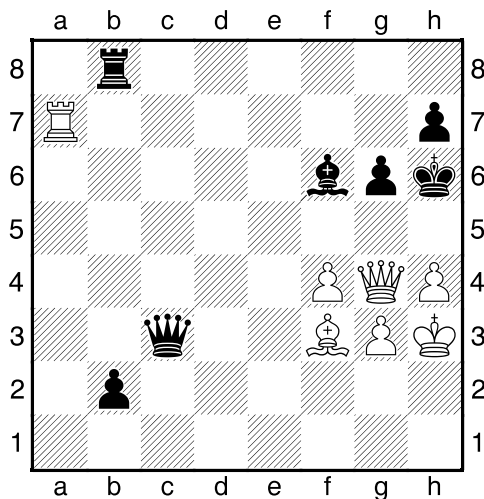
Bílý na tahu



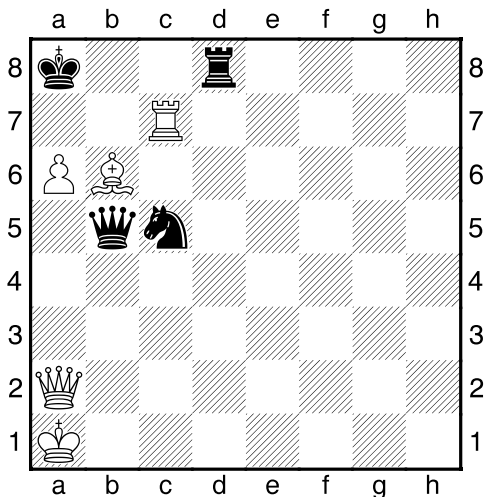
Bílý na tahu



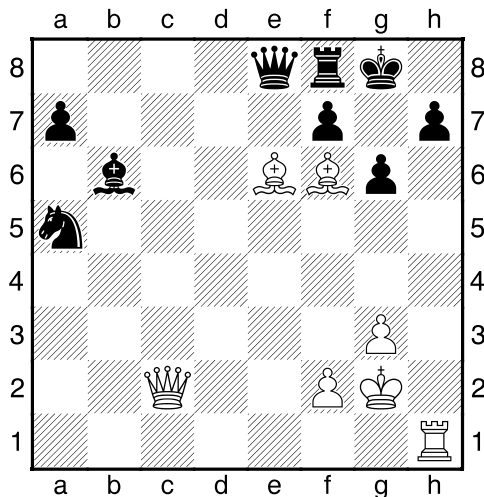
Bílý na tahu



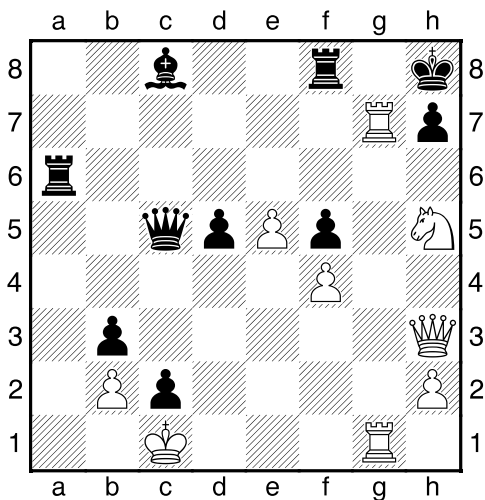
Bílý na tahu



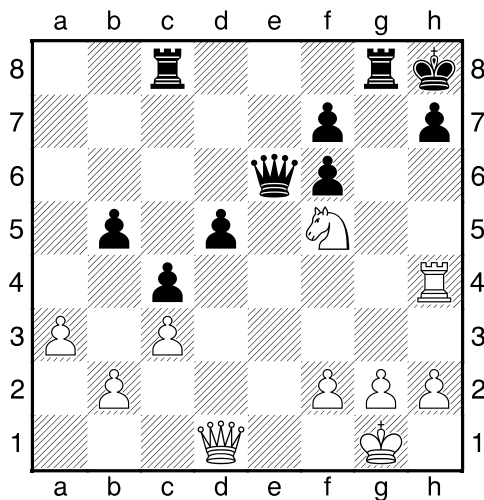
Bílý na tahu



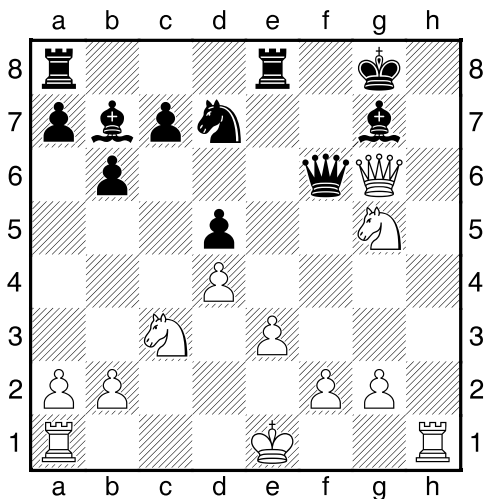
Bílý na tahu



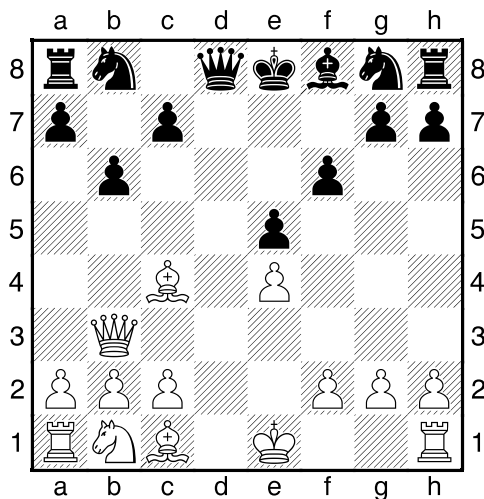
Bílý na tahu



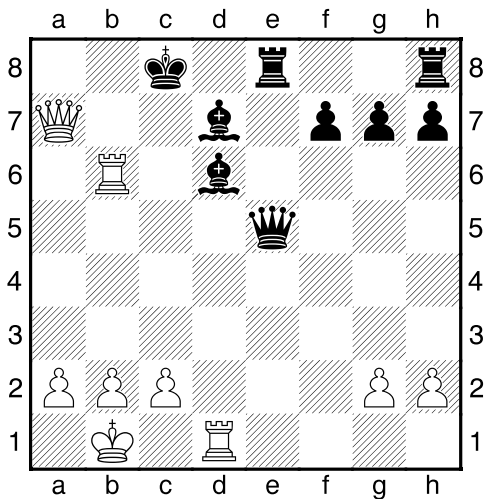
Bílý na tahu



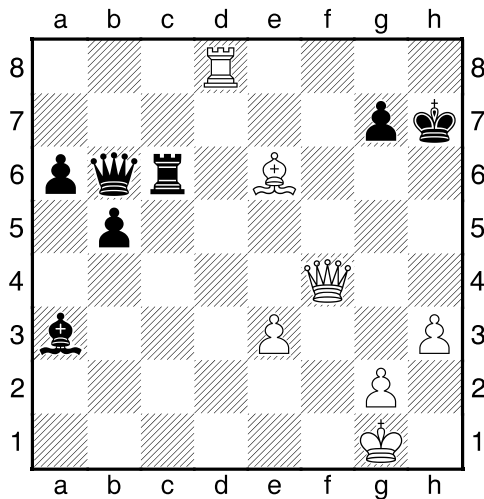
Bílý na tahu



Bílý na tahu



Bílý na tahu



**My-Chess 22 (Střední), 13.02.2023**

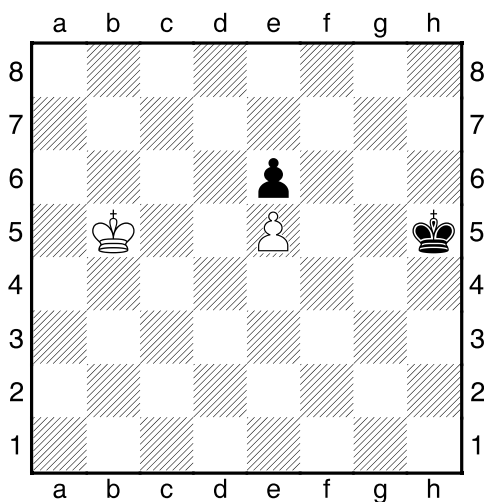
**Past a bodvček**  
(ŠK Biolek 009,1x)

**!!! Pod každý diagram napište první tah a jak partie dopadne !!!**

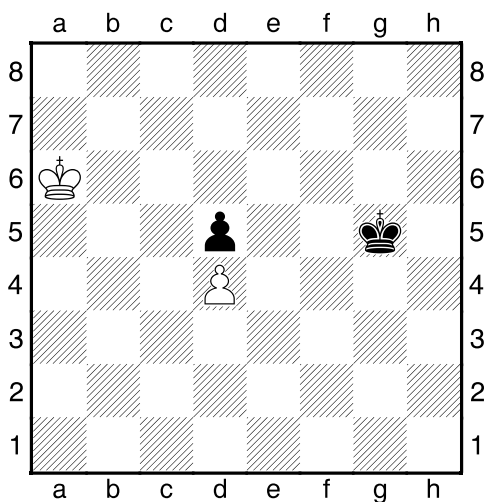
strana 3/3



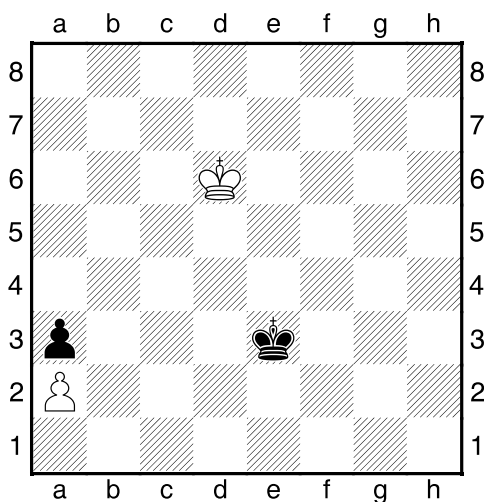
1. příklad Bílý na tahu



2. příklad Černý na tahu



3. příklad Černý na tahu



4. příklad Bílý na tahu

