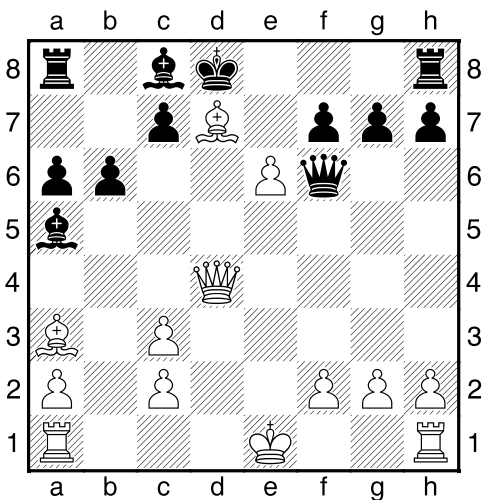
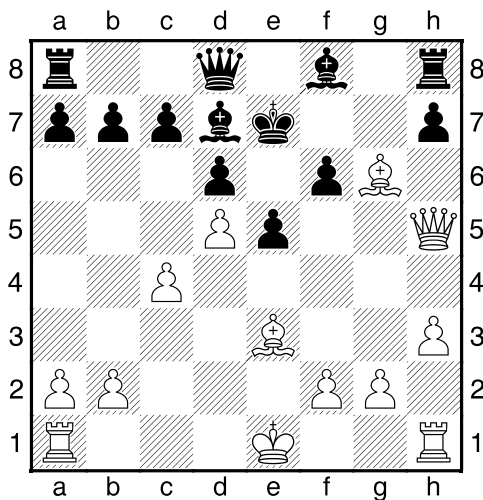


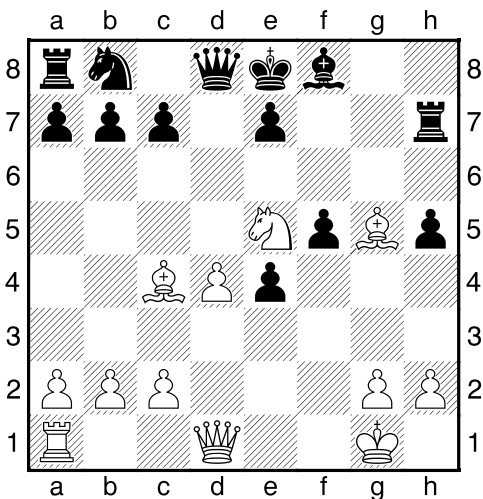
Bílý na tahu



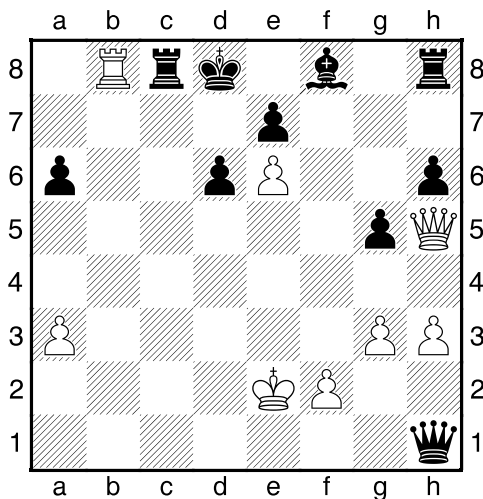
Bílý na tahu



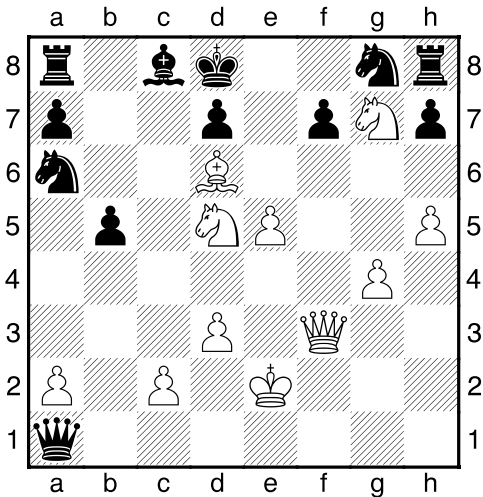
Bílý na tahu



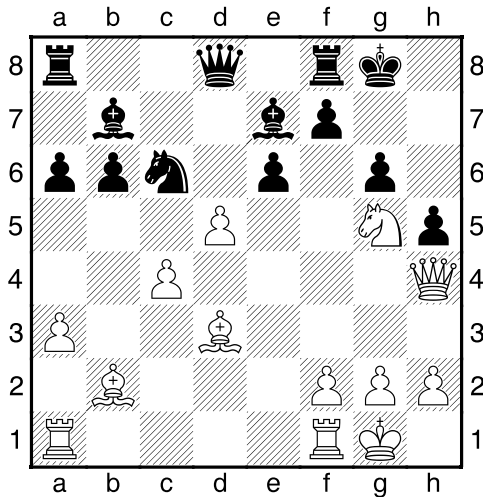
Bílý na tahu



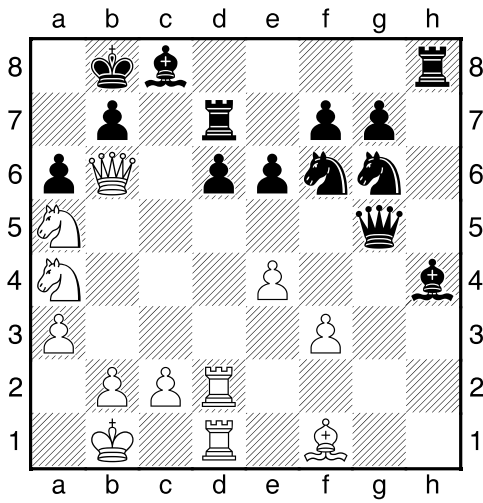
Bílý na tahu



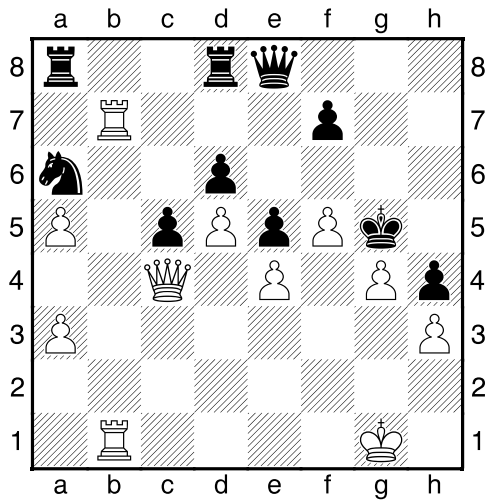
Bílý na tahu



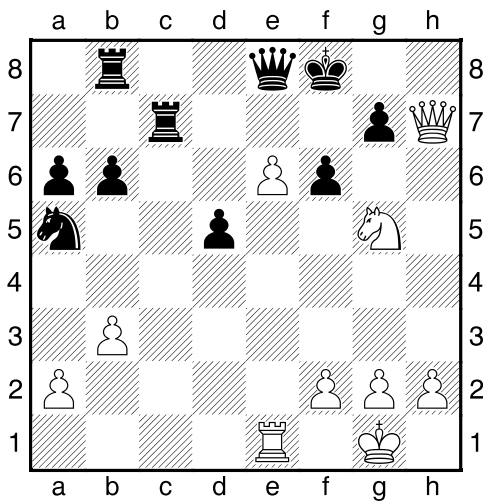
Bílý na tahu



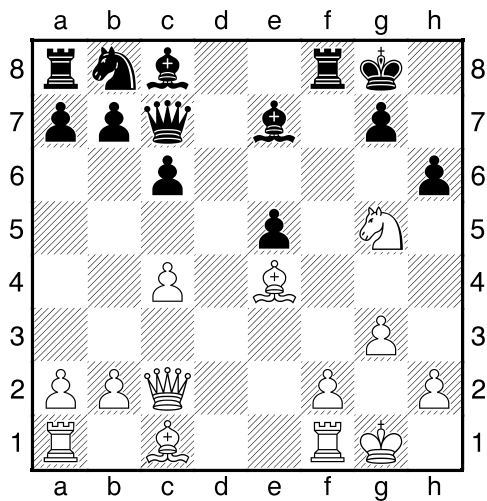
Bílý na tahu



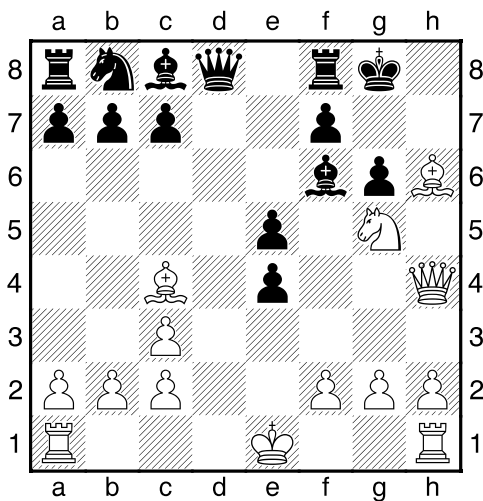
Bílý na tahu



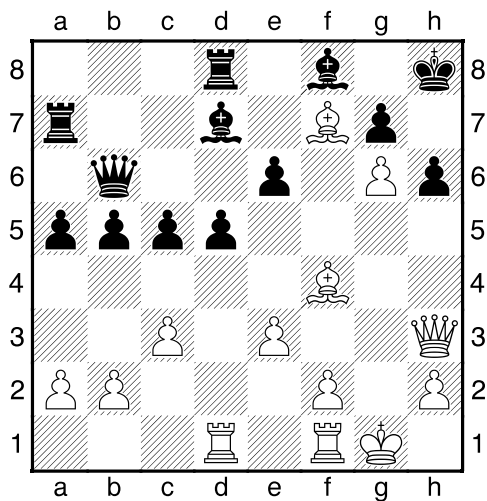
Bílý na tahu



Bílý na tahu

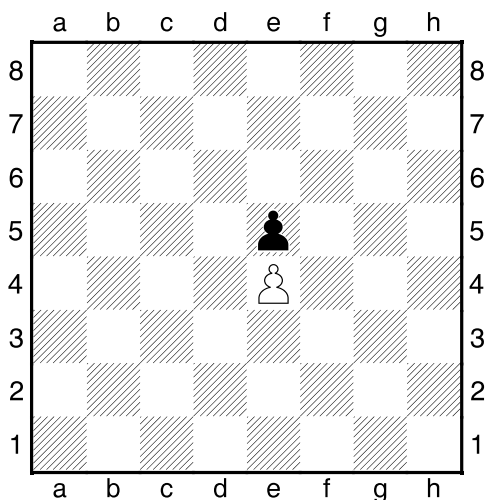


Bílý na tahu



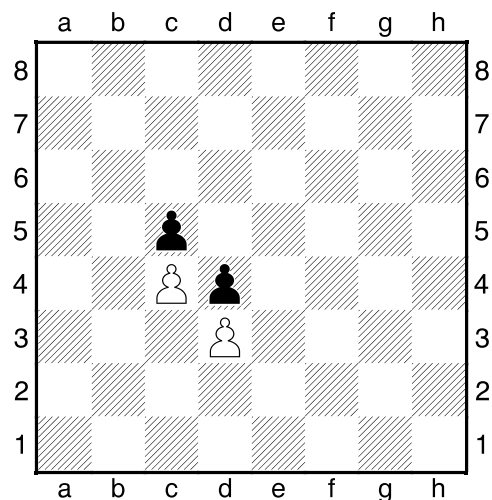


1.příklad Cvičná pozice



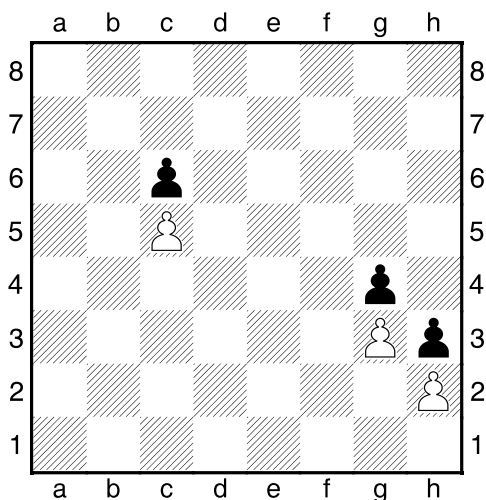
Jaká jsou mezní pole pěšce e5?

2.příklad Cvičná pozice



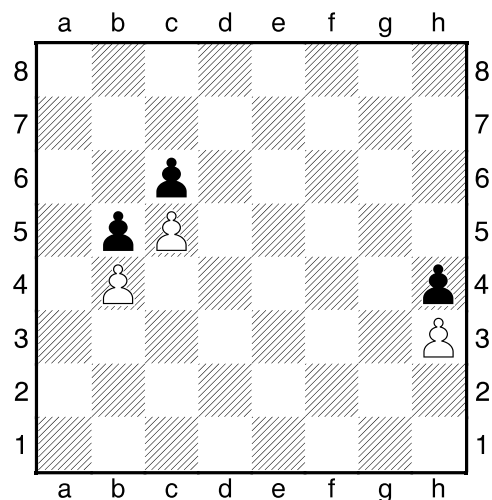
Jaká jsou mezní pole pěšce d3?

3.příklad Cvičná pozice



Jaká jsou mezní pole pěšců c6 a g4?

4.příklad Cvičná pozice

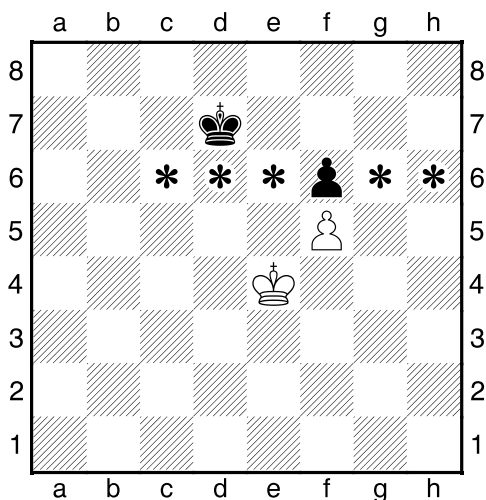


Jaká jsou mezní pole pěšců b4 a h3?

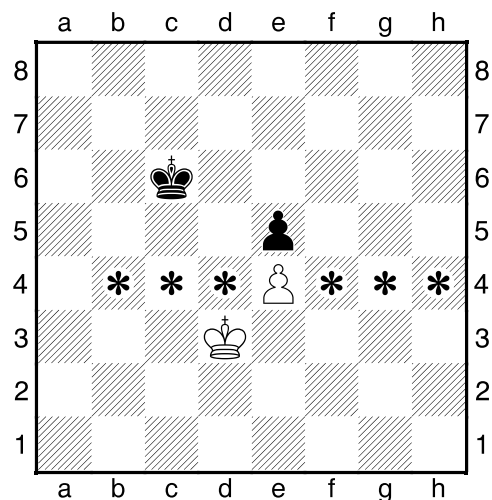
!!! Pod každý diagram napište první tah a jak partie dopadne !!!
(jako pomůcku máte vyznačena MP)



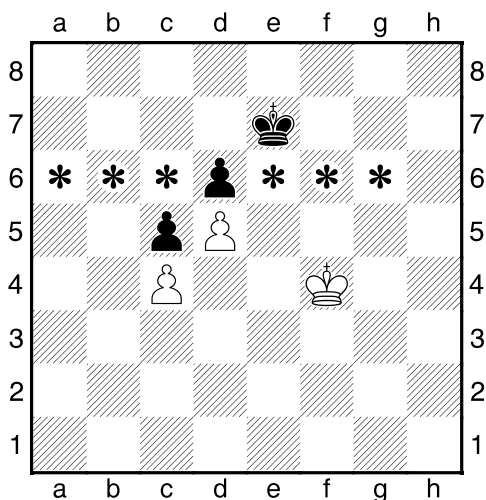
1.příklad Bílý na tahu



2.příklad Černý na tahu



3.příklad Bílý na tahu



4.příklad Bílý na tahu

