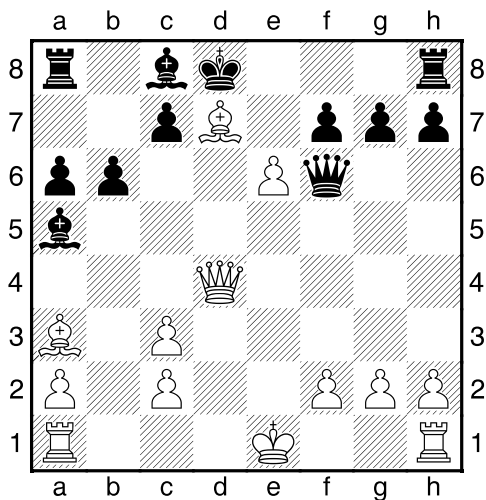
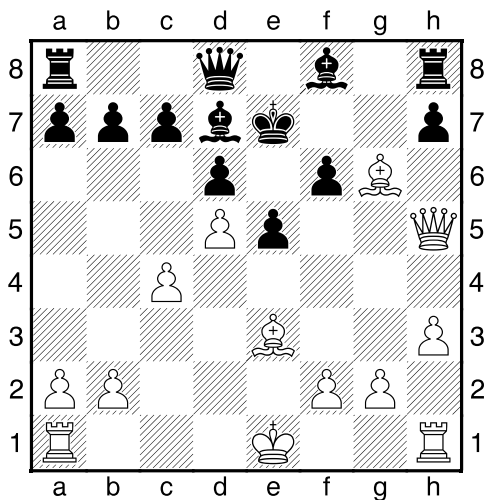


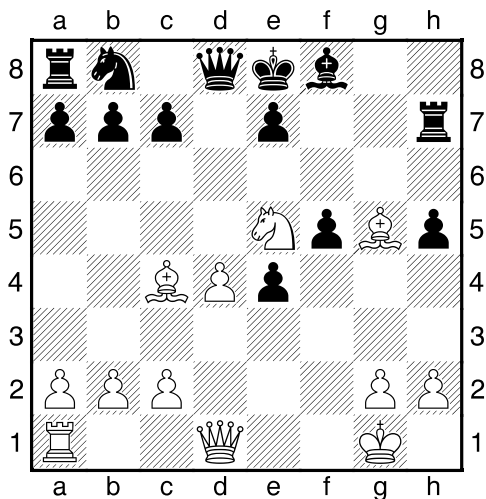
Bílý na tahu



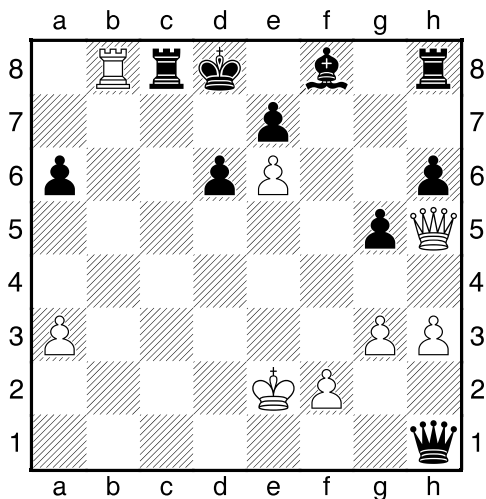
Bílý na tahu



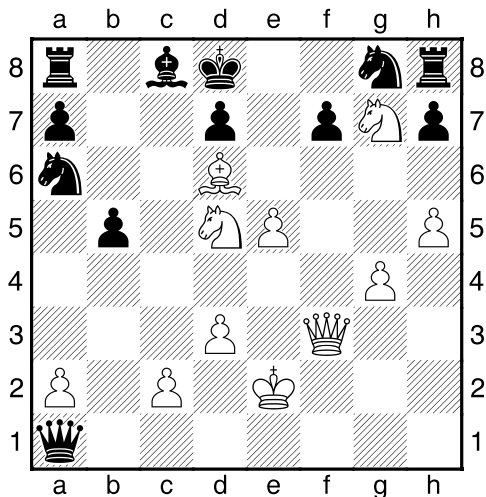
Bílý na tahu



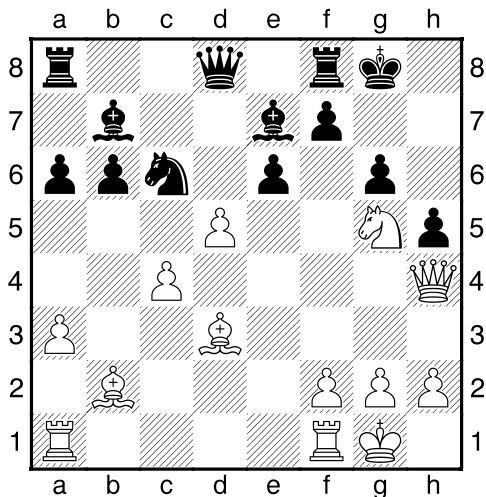
Bílý na tahu



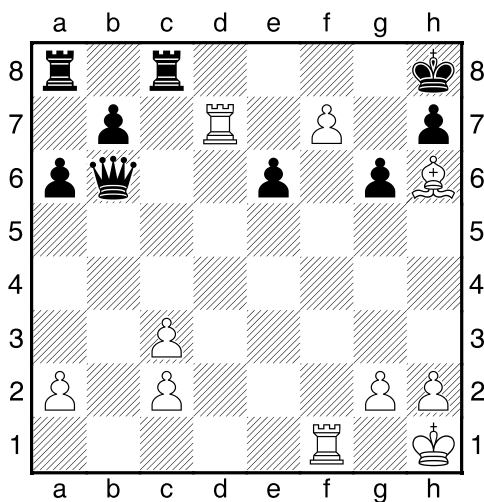
Bílý na tahu



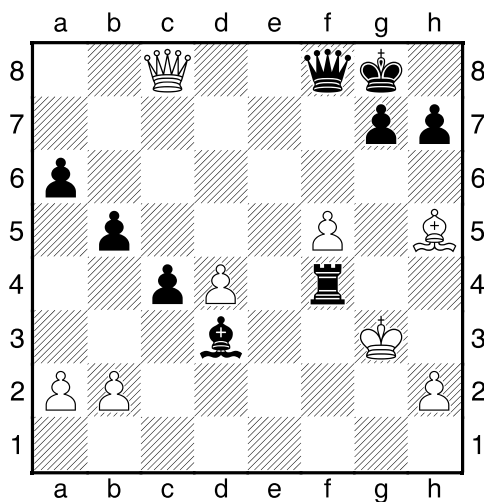
Bílý na tahu



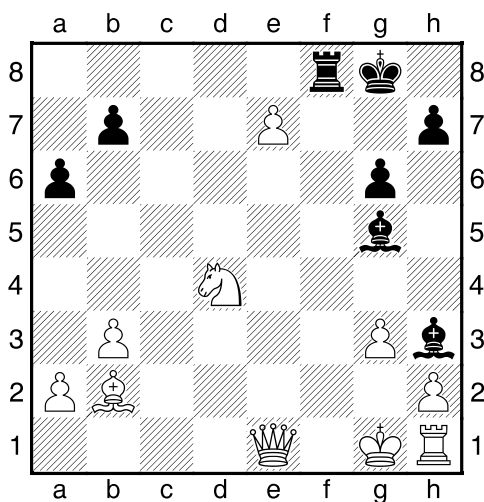
Bílý na tahu



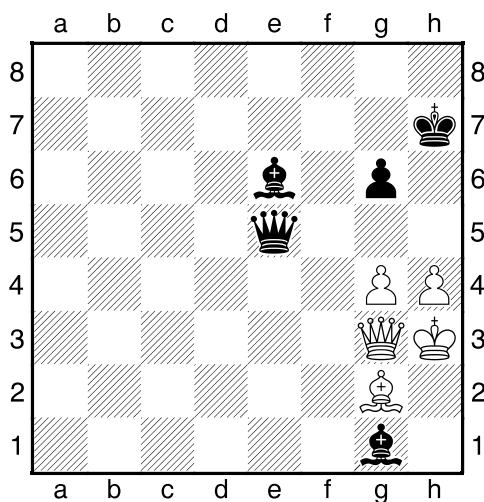
Bílý na tahu



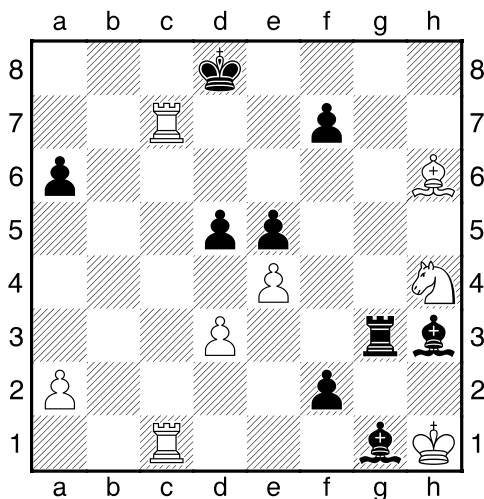
Černý na tahu



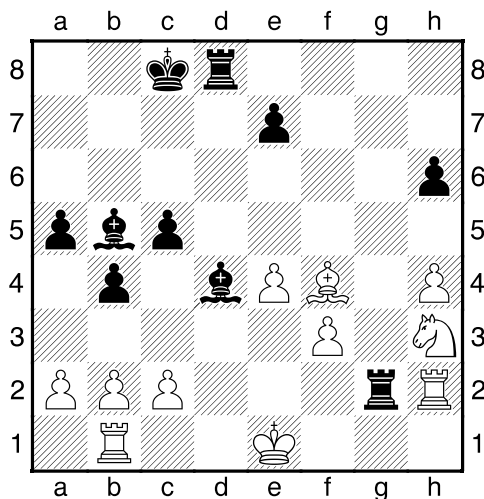
Černý na tahu



Černý na tahu



Černý na tahu



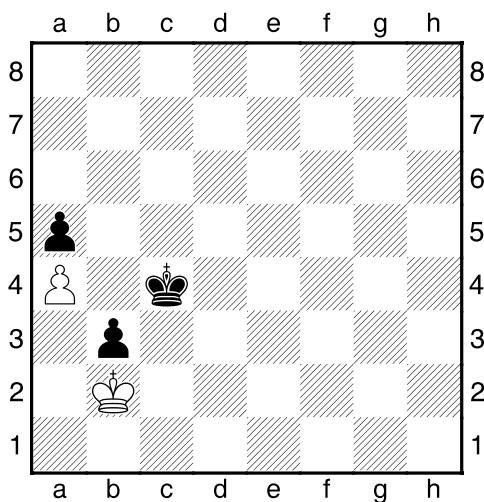
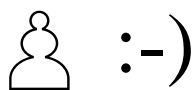
**My-Chess 27 (Střední), 18.03.2024**

**Krytý volný pěšec**

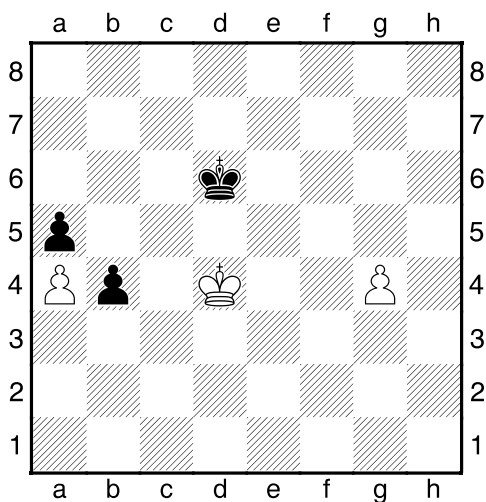
(ŠK Biolek 011,3)

**!!! Pod každý diagram napište první tah a jak partie dopadne !!!**

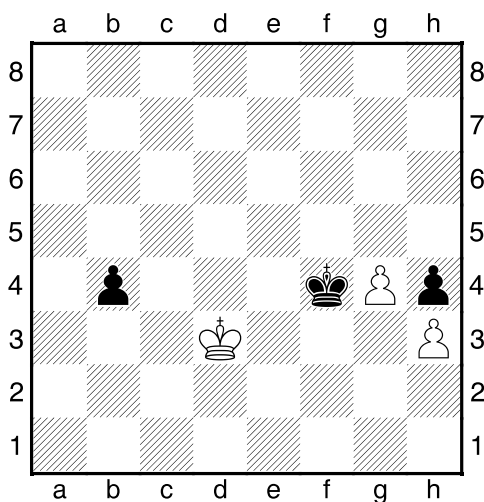
strana 3/3



2. příklad Bílý na tahu



3. příklad Bílý na tahu



4. příklad Černý na tahu

