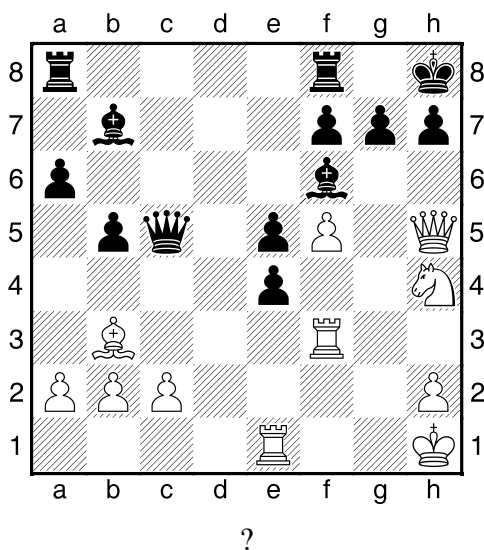


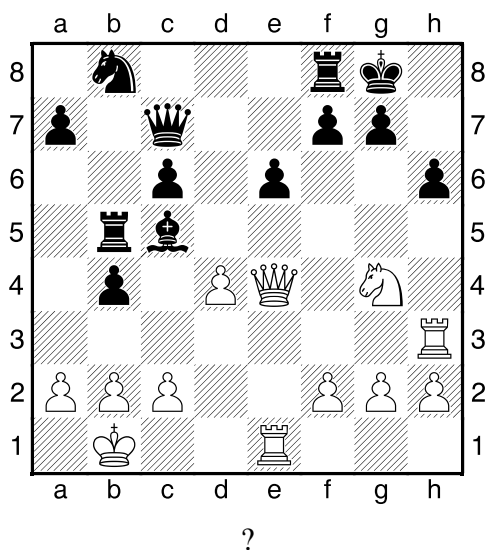
My-Chess 27 (Těžké), 20.03.2023
Taktika a koncovky

první strana ze dvou

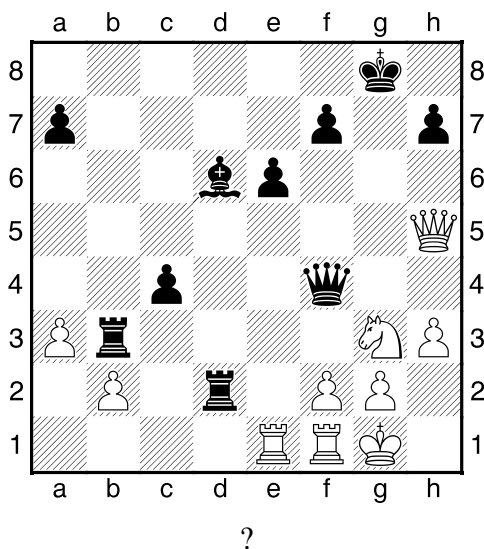
1. příklad Bílý na tahu (pš 2/139)



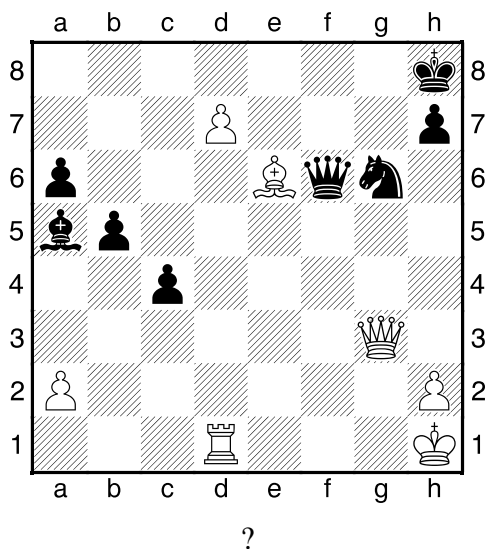
2. příklad Bílý na tahu (pš x142)



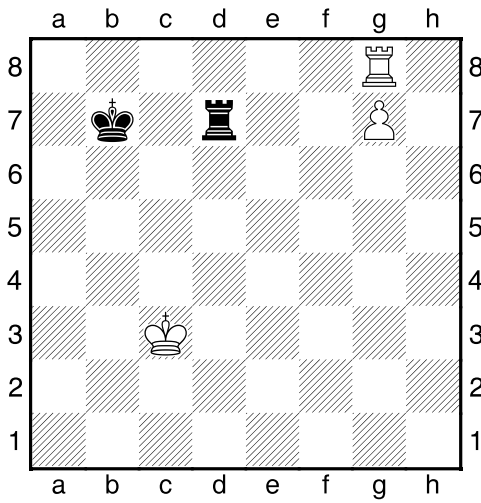
3. příklad Černý na tahu (pš 1/237)



4. příklad Bílý na tahu (pš x292)

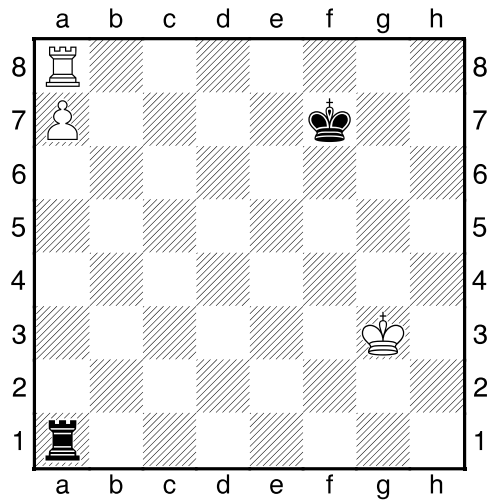


Bílý na tahu



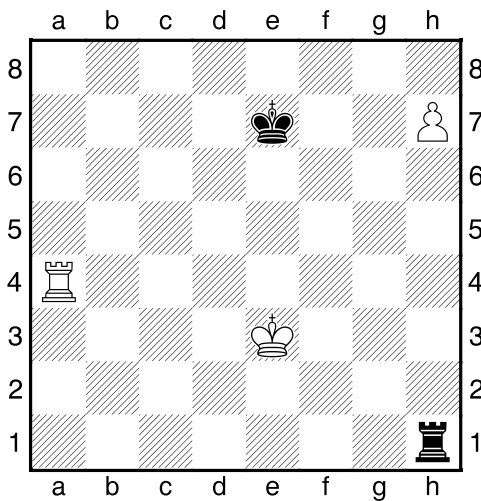
Co byste zahráli a jak partie dopadne?

Bílý na tahu



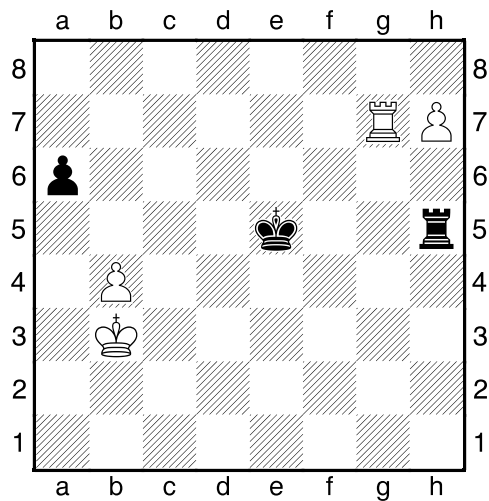
Co byste zahráli a jak partie dopadne?

Bílý na tahu



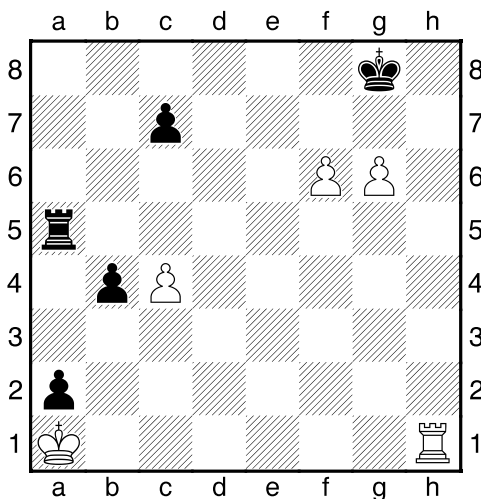
Co byste zahráli a jak partie dopadne?

Bílý na tahu



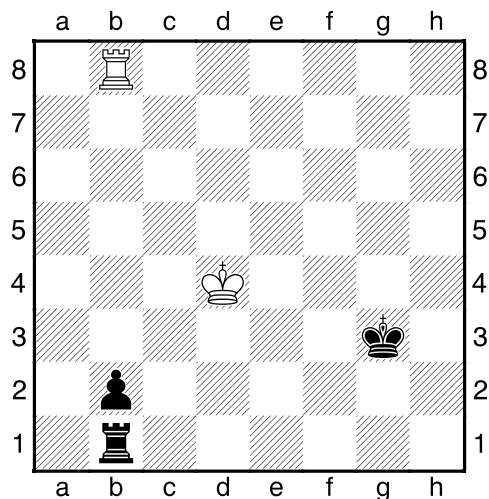
Co byste zahráli a jak partie dopadne?

Bílý na tahu



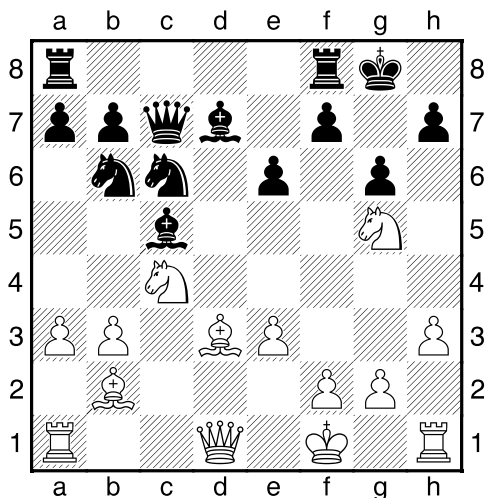
Co byste zahráli a jak partie dopadne?

Černý na tahu

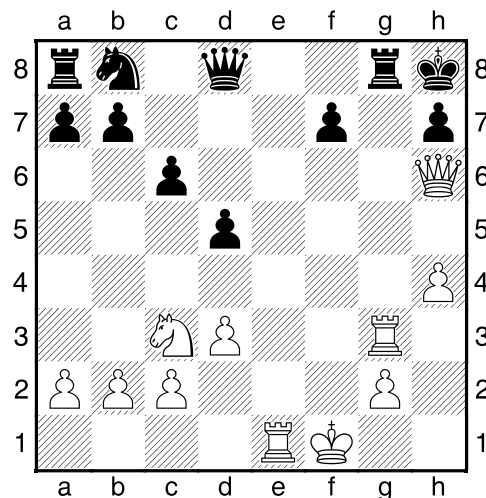


Co byste zahráli a jak partie dopadne?

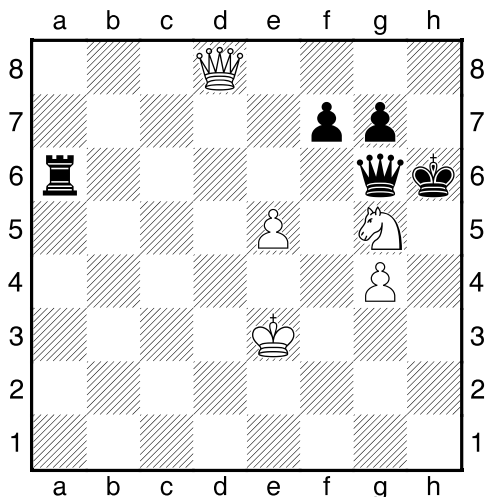
Bílý na tahu



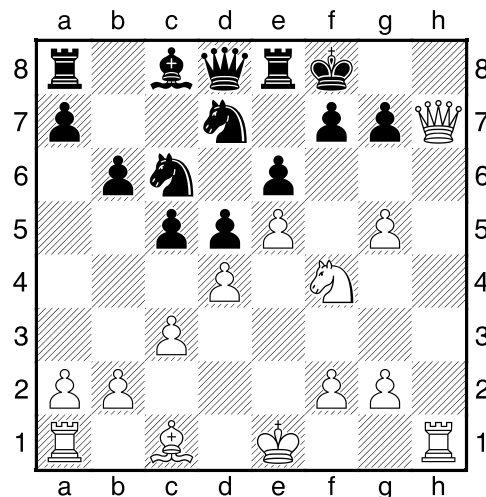
Bílý na tahu



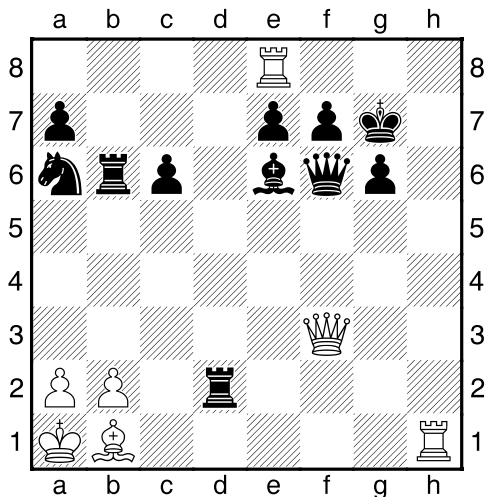
Bílý na tahu



Bílý na tahu



Bílý na tahu



Bílý na tahu

