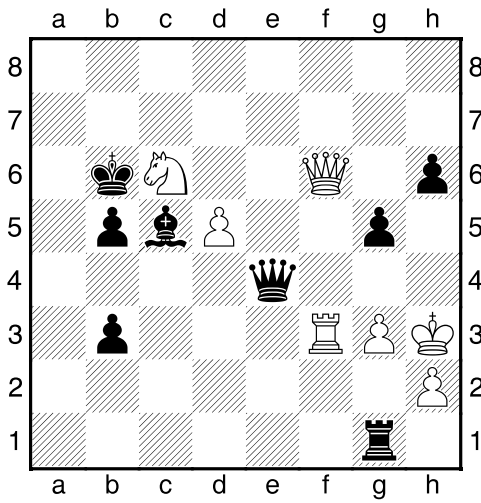
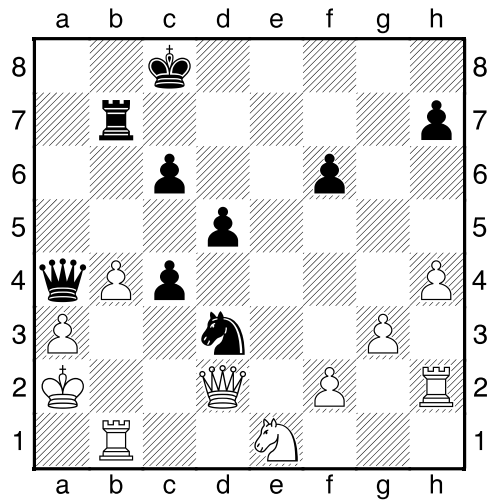


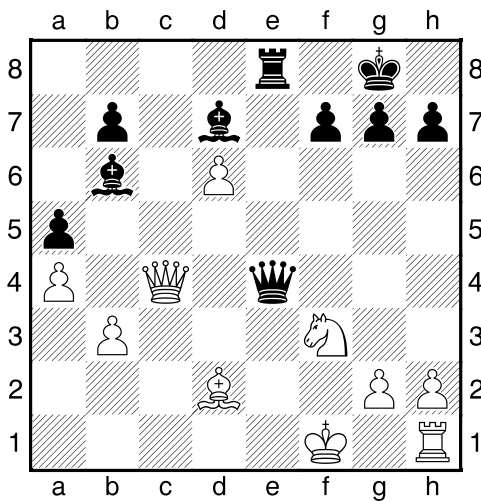
Černý na tahu



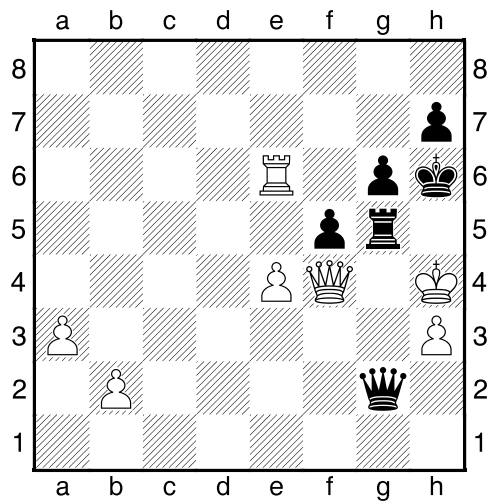
Černý na tahu



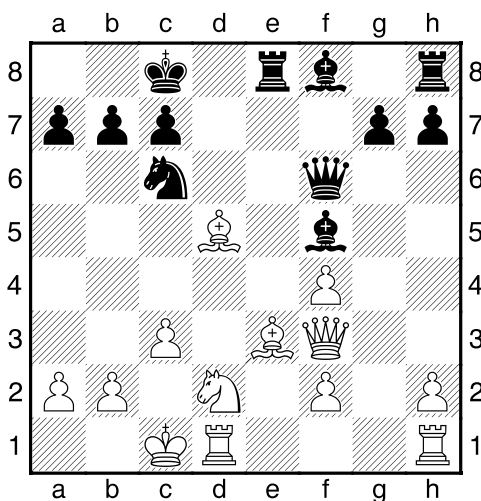
Černý na tahu



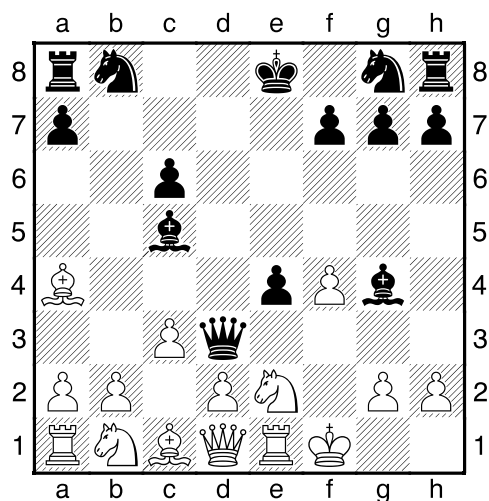
Černý na tahu



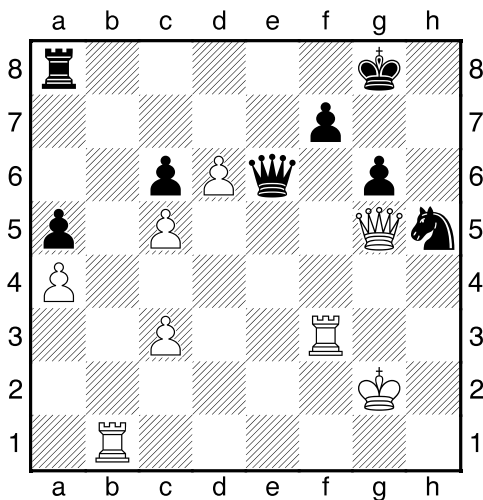
Černý na tahu



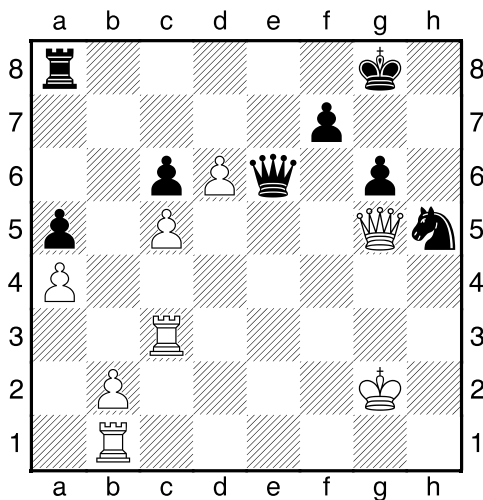
Černý na tahu



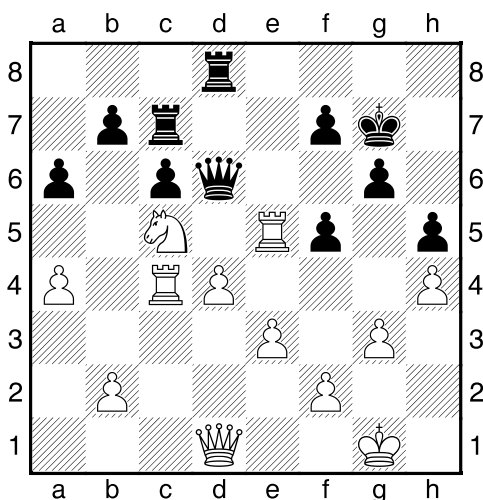
Černý na tahu



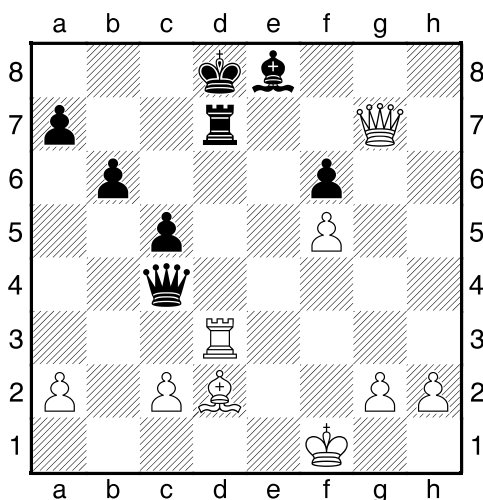
Černý na tahu



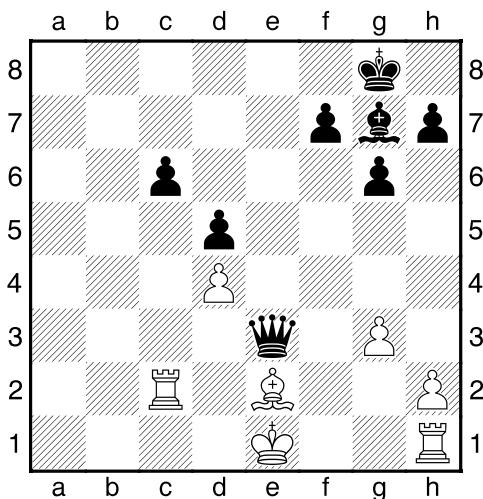
Černý na tahu



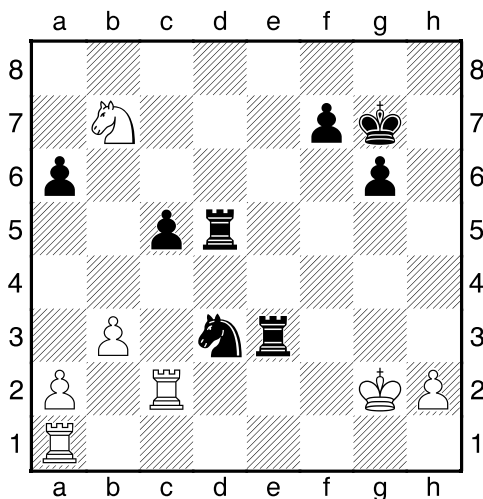
Černý na tahu



Černý na tahu



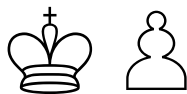
Černý na tahu



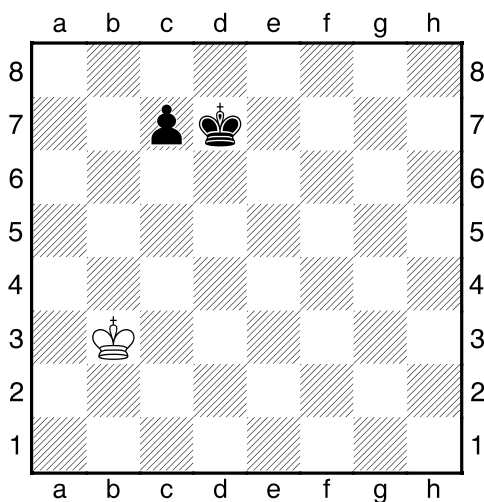
My-Chess 05 (Střední), 03.10.2022
K+pxK, vzdálená opozice
(ŠK Biolek 006,4)

!!! Pod každý diagram napište první tah a jak partie dopadne !!!

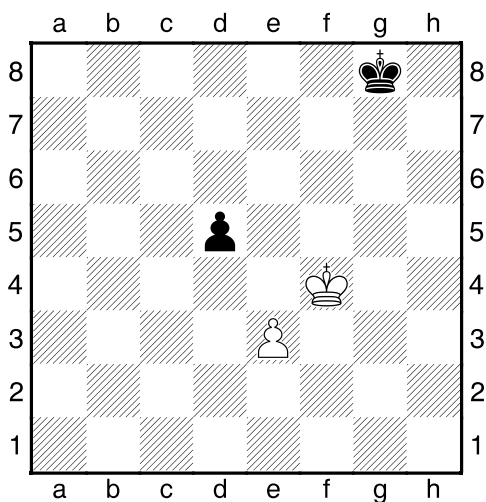
strana 3/3



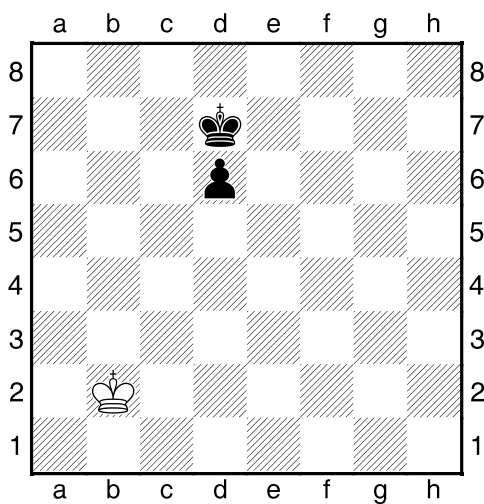
1. příklad Bílý na tahu



2. příklad Černý na tahu



3. příklad Černý na tahu



4. příklad Bílý na tahu

