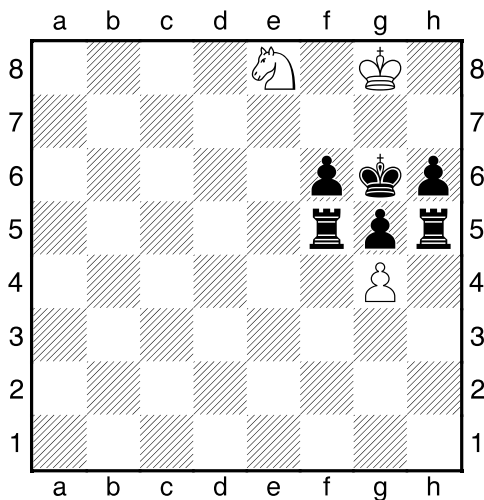
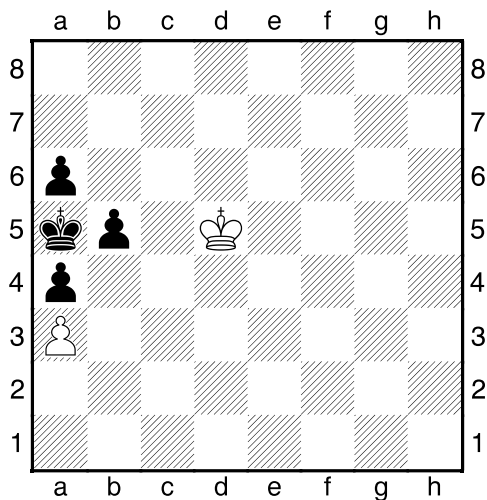


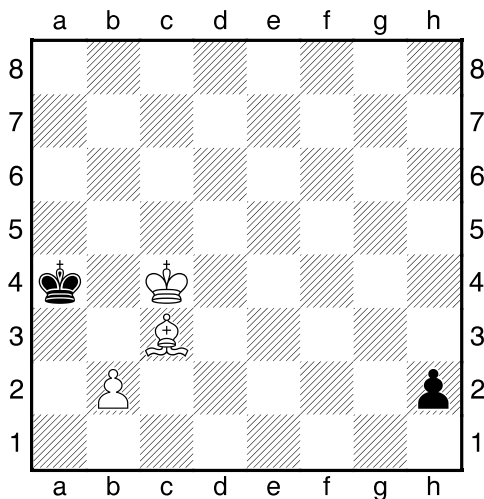
Bílý na tahu



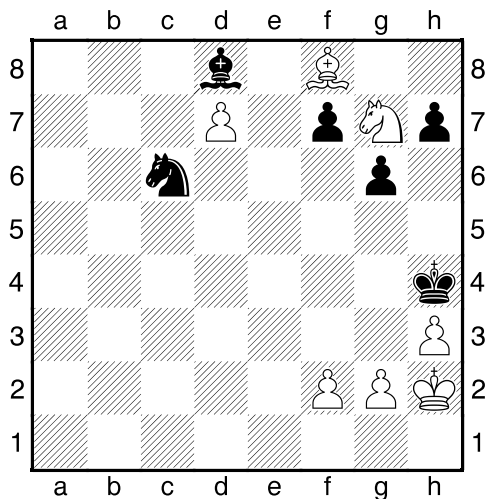
Bílý na tahu



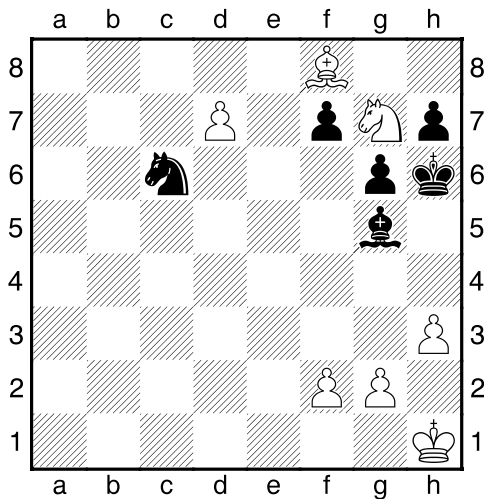
Bílý na tahu



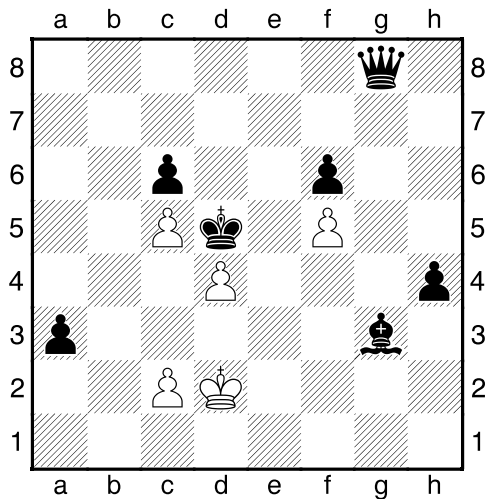
Bílý na tahu



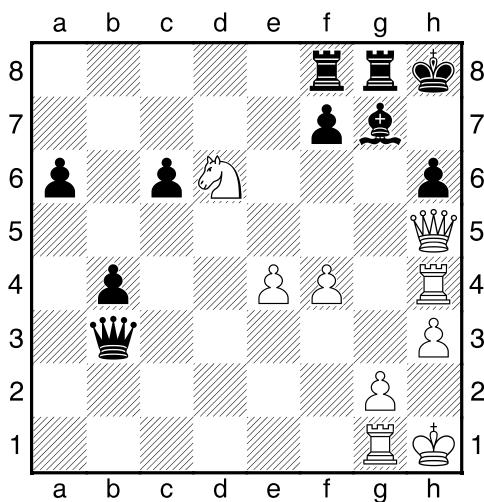
Bílý na tahu



Bílý na tahu

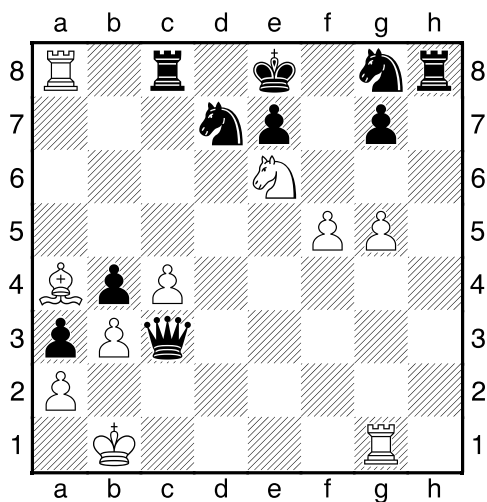


Bílý na tahu



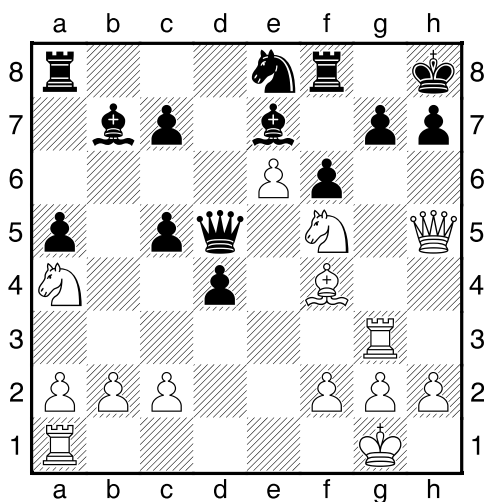
NÁPOVĚDA: 1.Dxh6+

Bílý na tahu



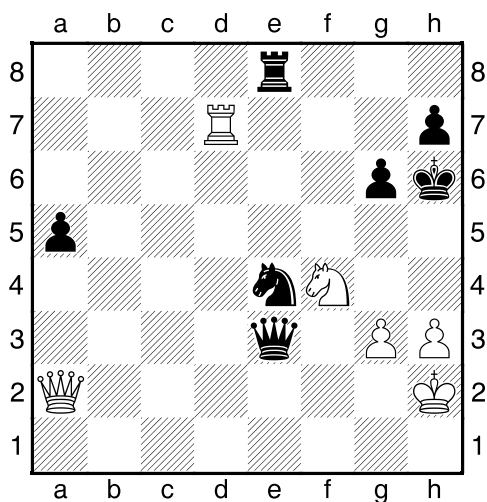
NÁPOVĚDA: 1.Vxc8+

Bílý na tahu



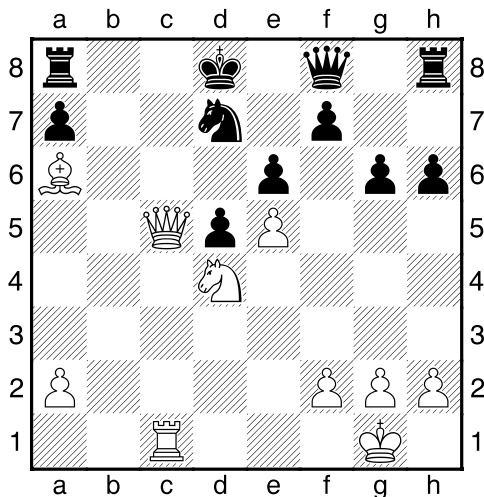
NÁPOVĚDA: 1.Dxh7+

Bílý na tahu



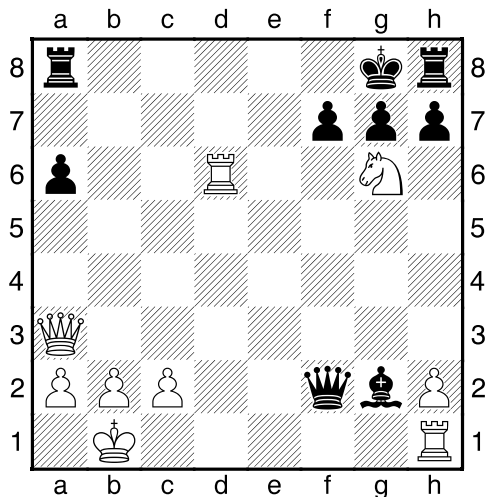
NÁPOVĚDA: 1.Vxh7+

Bílý na tahu



NÁPOVĚDA: 1.Dc8+

Bílý na tahu



NÁPOVĚDA: 1.Vd8+

My-Chess 40 (Střední), 19.06.2023

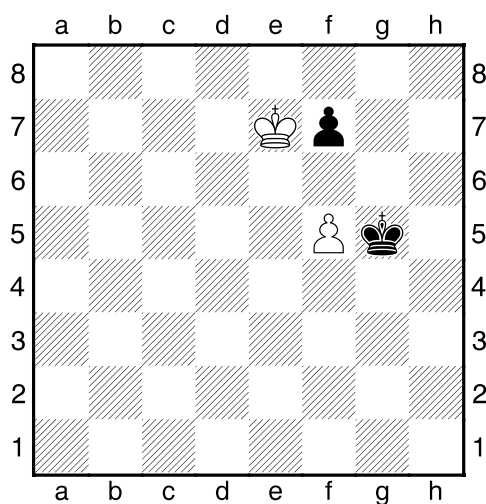
Past
(Biolek 008,4)

!!! Pod každý diagram napište první tah a jak partie dopadne !!!

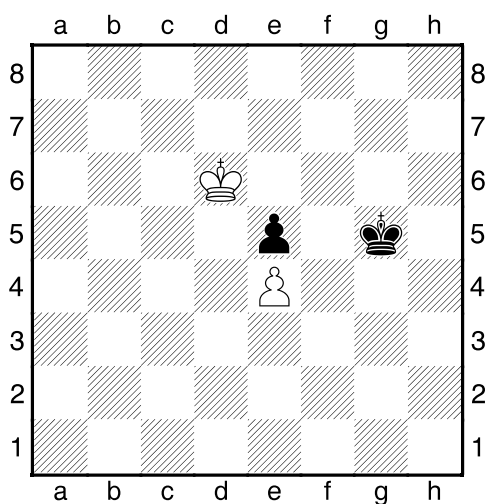
strana 3/3



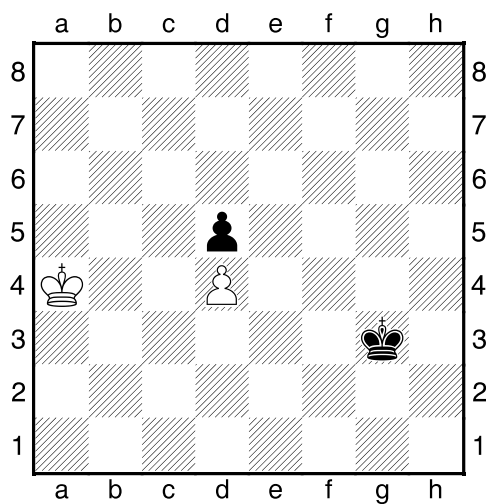
1. příklad Bílý na tahu



2. příklad Černý na tahu



3. příklad Bílý na tahu



4. příklad Bílý na tahu

