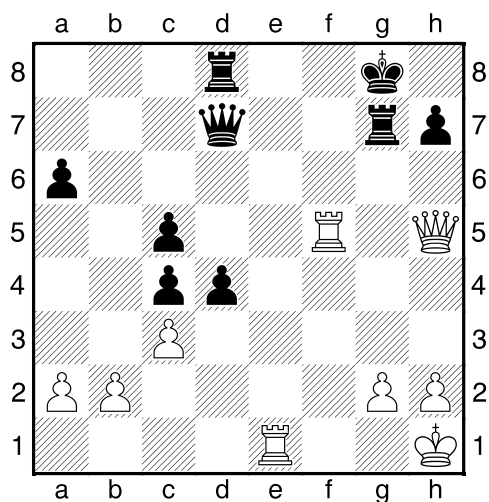
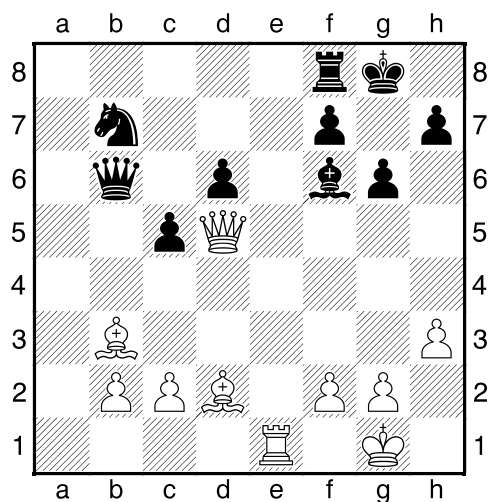


1.příklad Bílý na tahu (pš x064)

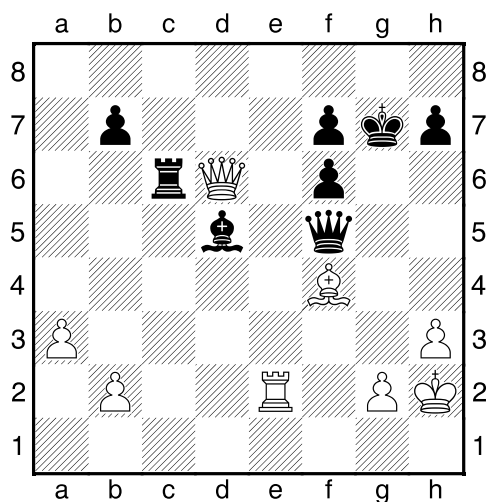


2.příklad Bílý na tahu (pš x168)

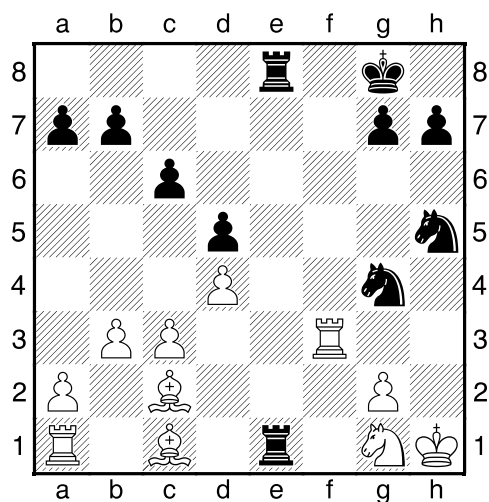


V partii se stalo 1.Sh6 Sg7. Jak pokračoval bílý?

3.příklad Bílý na tahu (pš x197)



4.příklad Černý na tahu (pš 1/165)



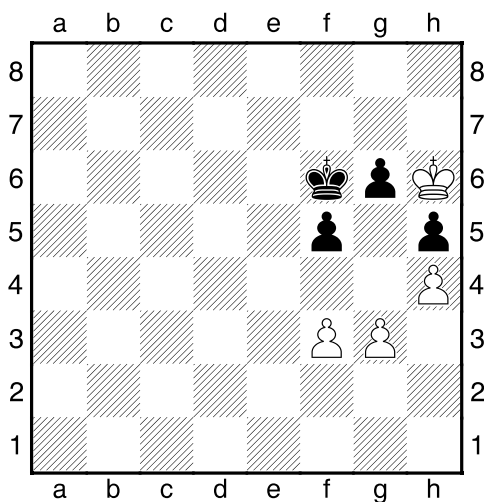
**Taktika a koncovky**

(ŠK Biolek 019,1)

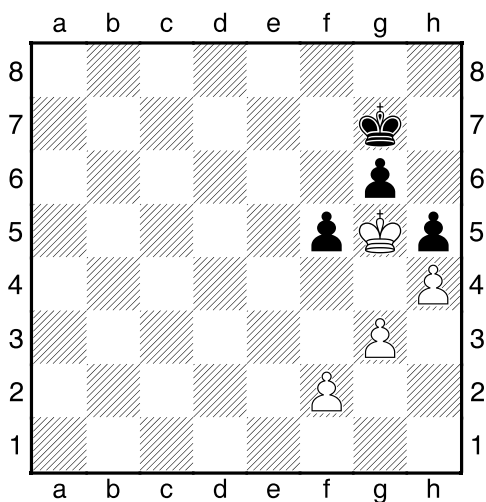
**!!! Pod každý diagram napište první tah a jak partie dopadne !!!**



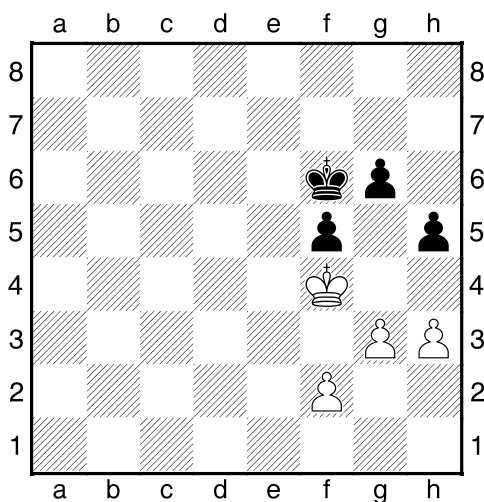
1.:příklad Bílý na tahu



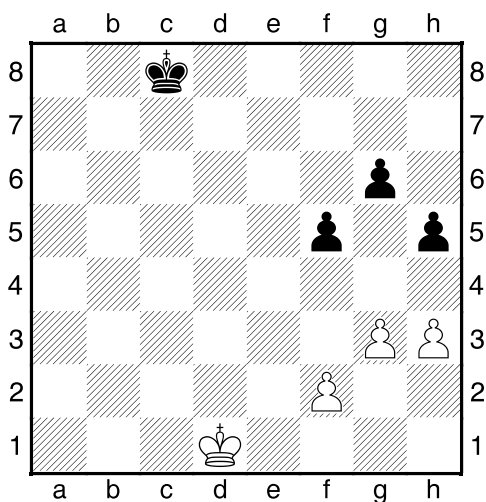
2. příklad Bílý na tahu



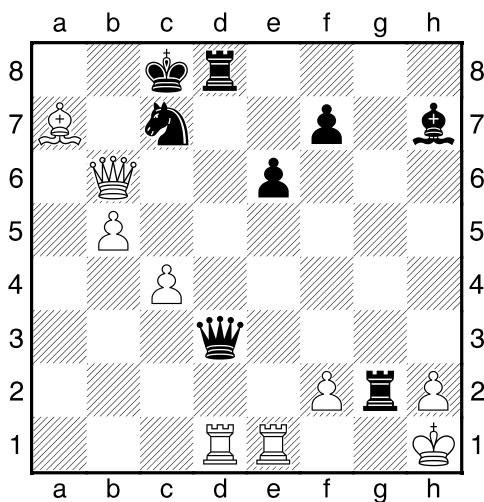
3. příklad Bílý na tahu



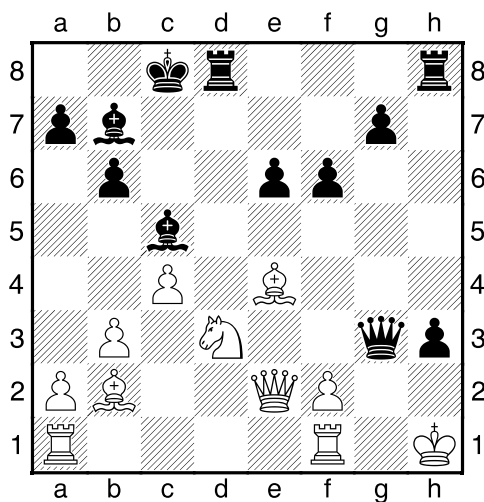
4. příklad Bílý na tahu



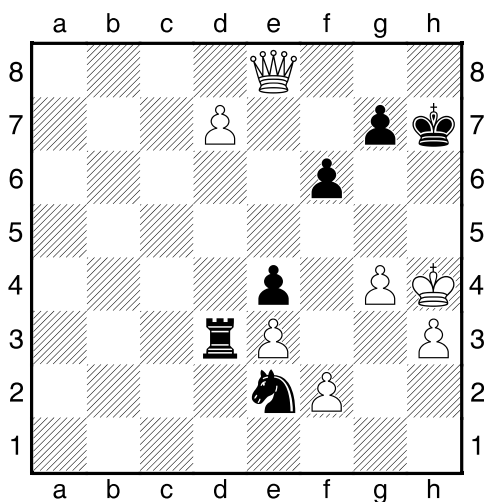
Černý na tahu



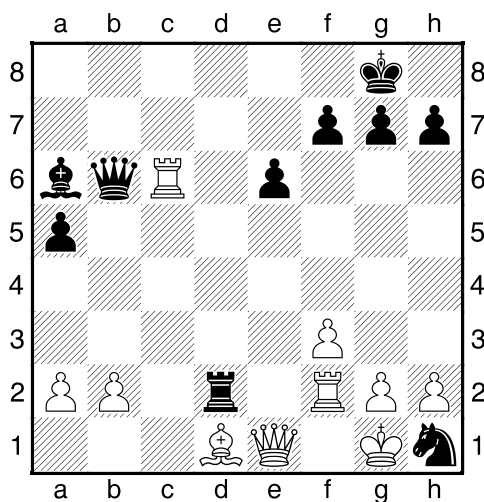
Černý na tahu



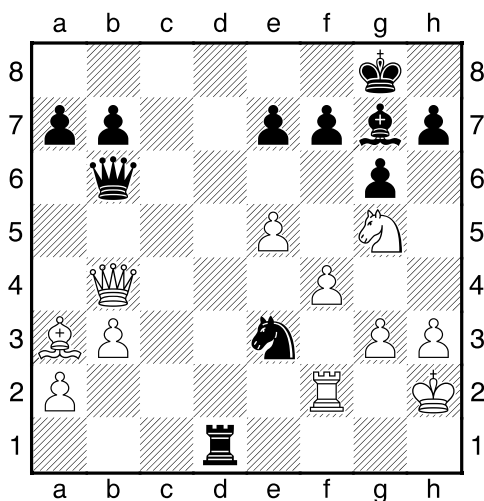
Černý na tahu



Černý na tahu



Černý na tahu



Černý na tahu

