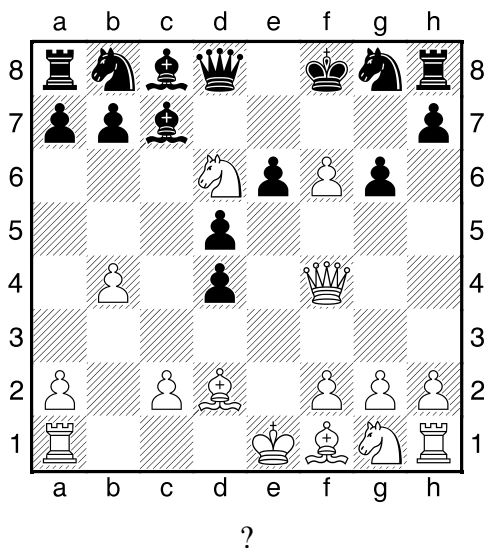
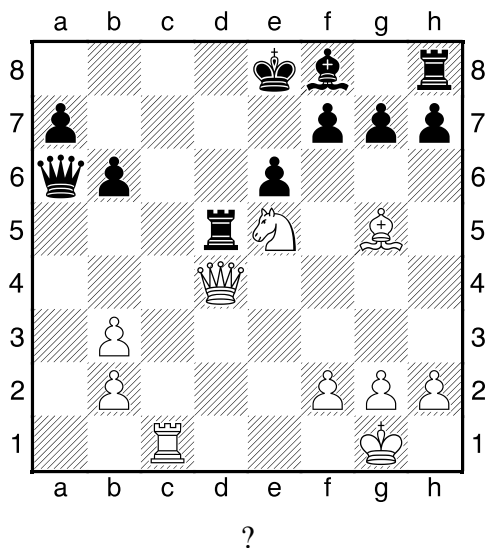


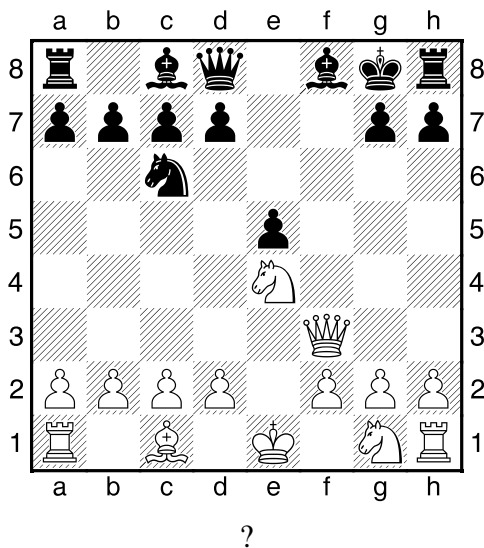
1.příklad Bílý na tahu (pš x322)



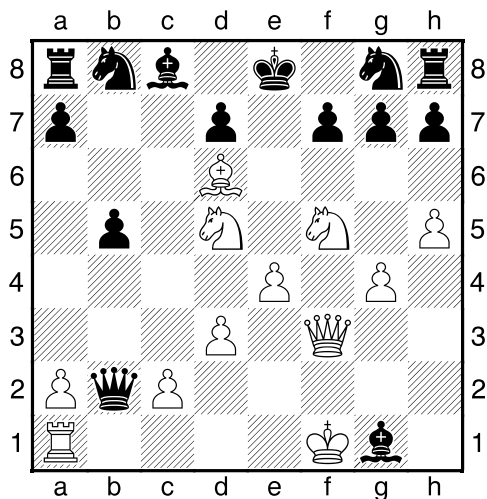
2.příklad Bílý na tahu (pš x436)



3.příklad Bílý na tahu (pš x392)



4.příklad Bílý na tahu (pš 4/296)

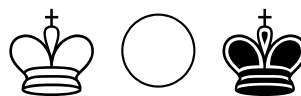
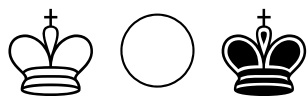


V partii se stalo 1.e5 Dxa1+ 2.Ke2 Ja6.
 Jak pokračoval bílý?

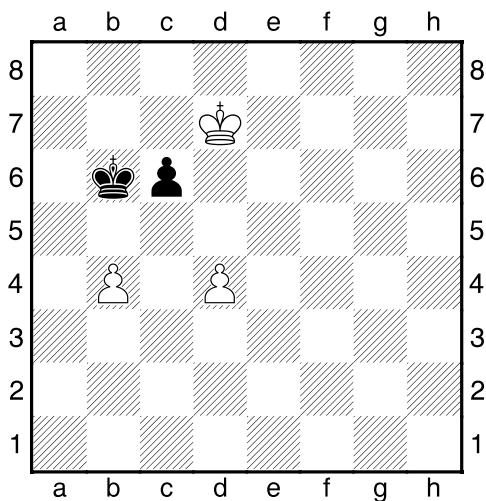
Taktika a koncovky

(ŠK Biolek 010, x)

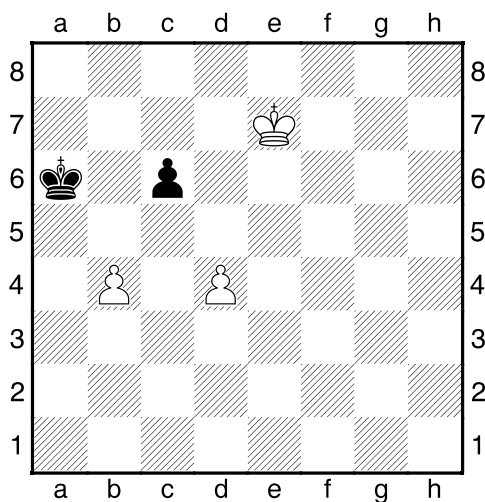
!!! Pod každý diagram napište první tah a jak partie dopadne !!!



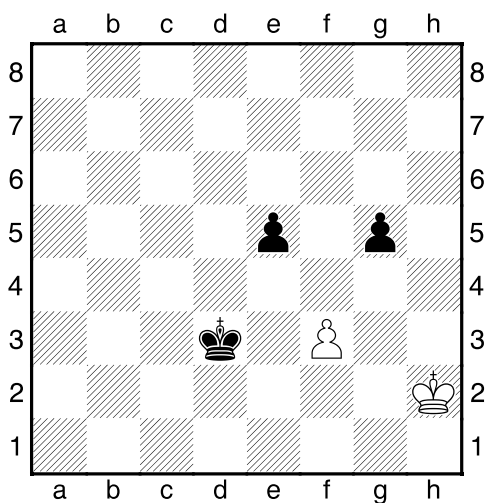
1. příklad Bílý na tahu



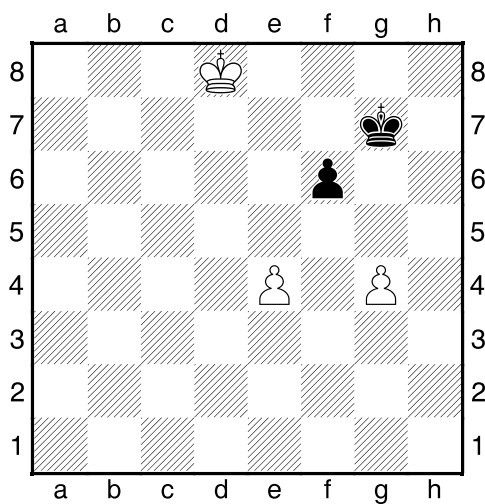
2. příklad Bílý na tahu



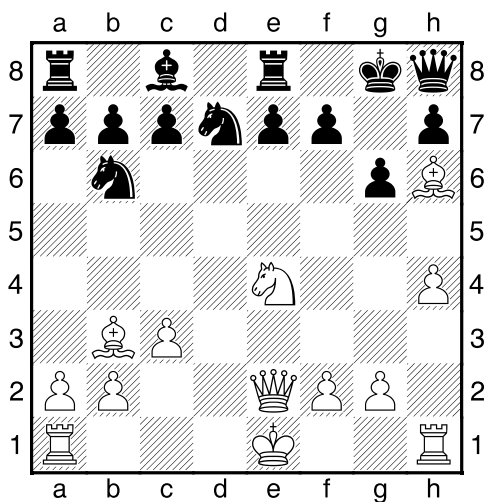
3. příklad Černý na tahu



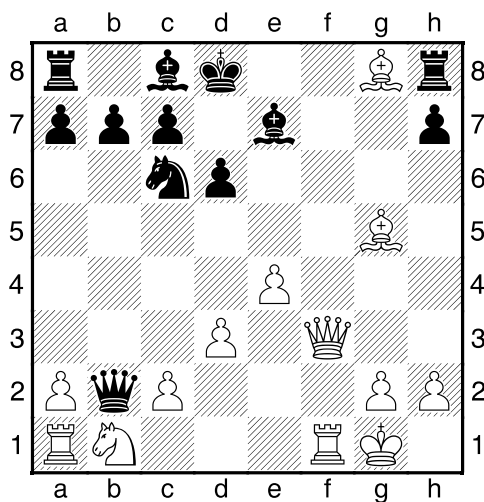
4. příklad Černý na tahu



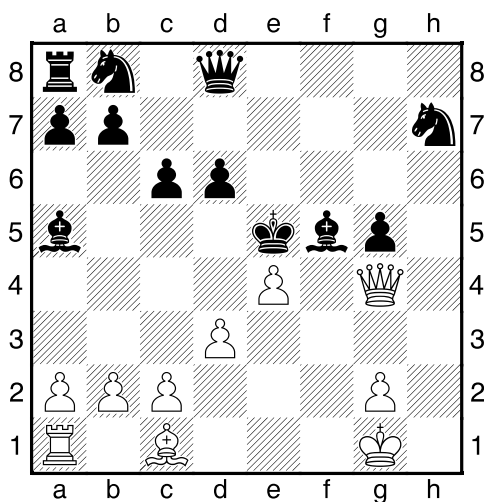
Bílý na tahu



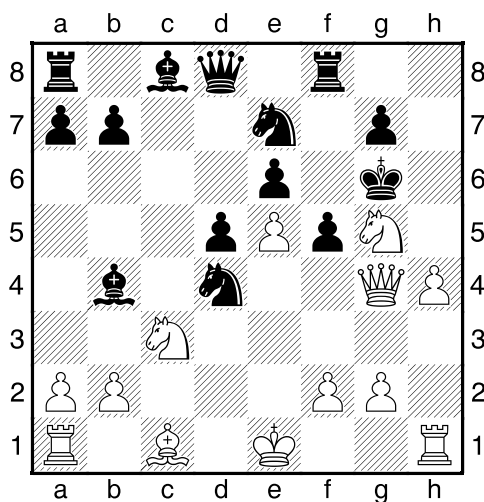
Bílý na tahu



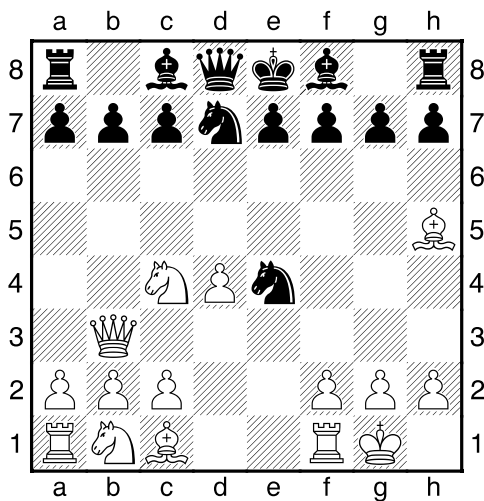
Bílý na tahu



Bílý na tahu



Bílý na tahu



Bílý na tahu

