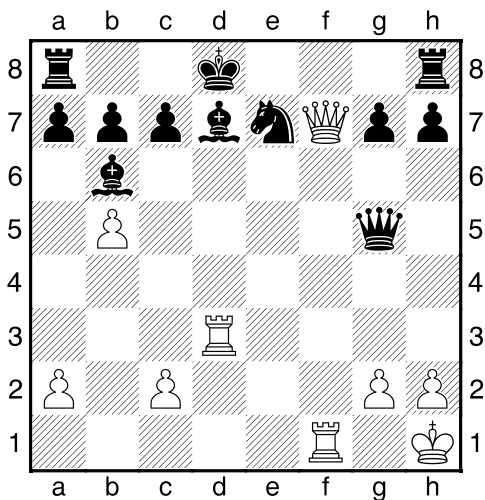
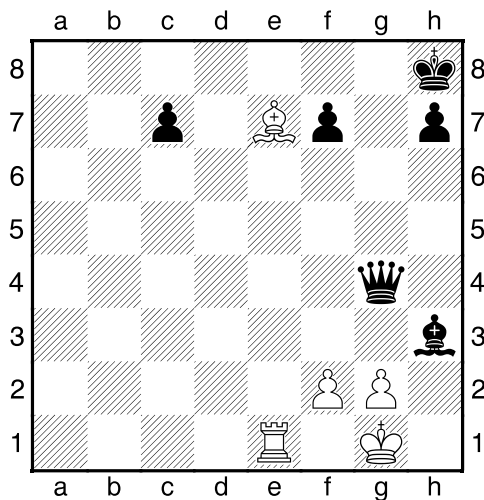


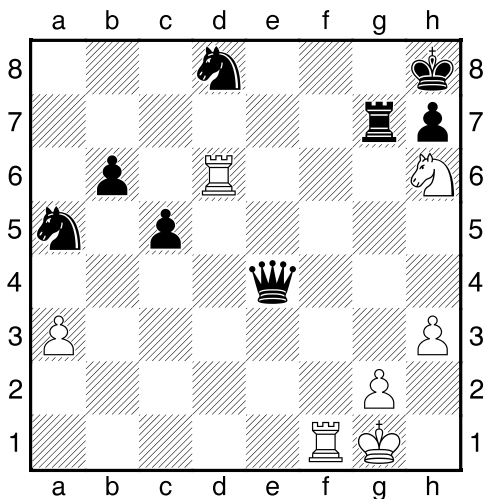
Bílý na tahu



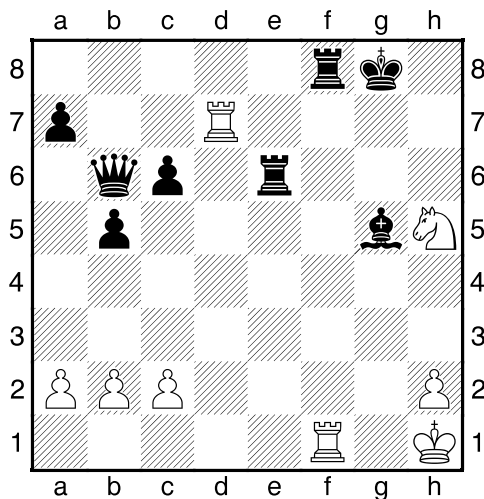
Bílý na tahu



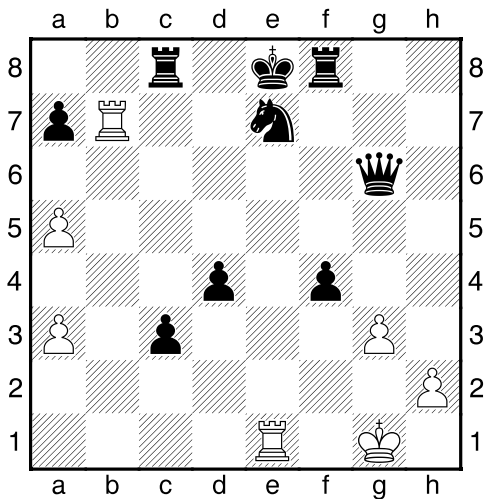
Bílý na tahu



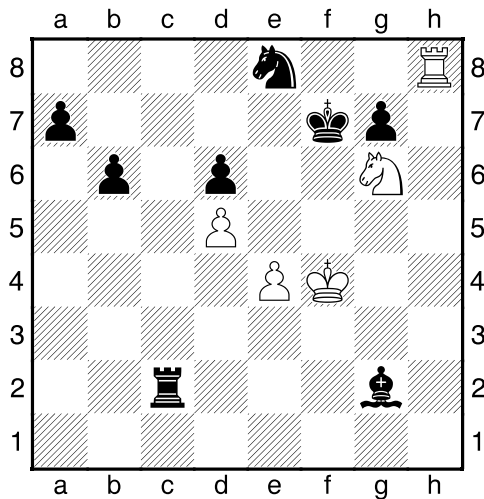
Bílý na tahu



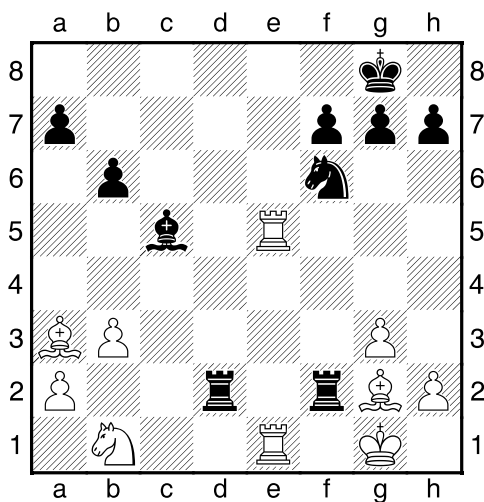
Bílý na tahu



Bílý na tahu

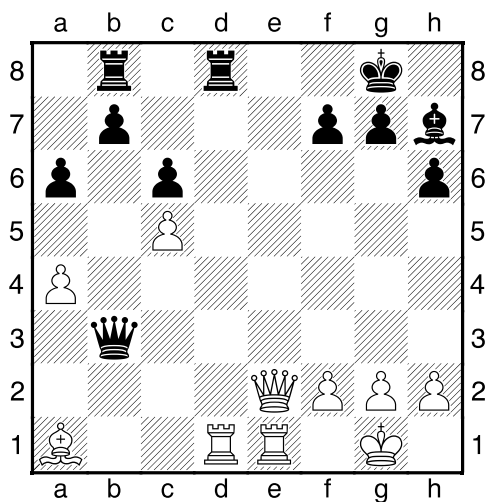


Bílý na tahu



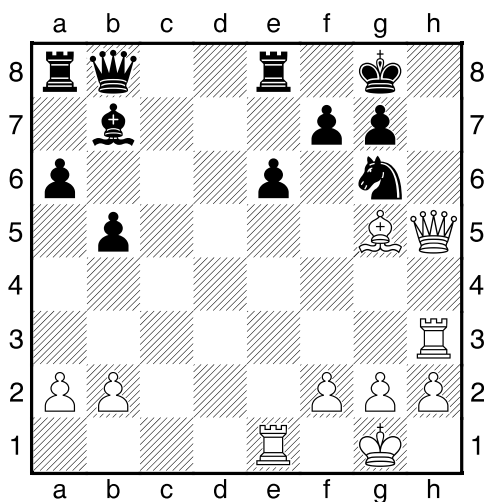
NÁPOVĚDA: 1.Ve8+

Bílý na tahu



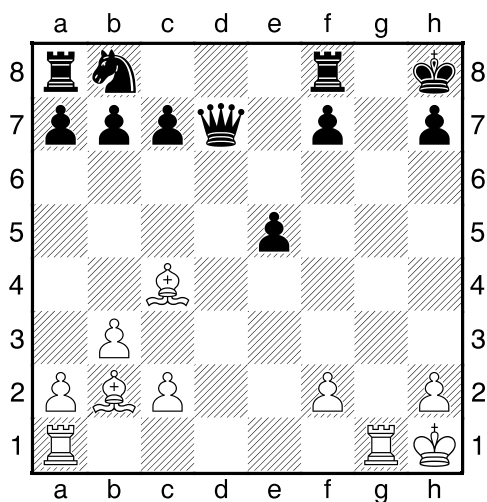
NÁPOVĚDA: 1.Vxd8+

Bílý na tahu



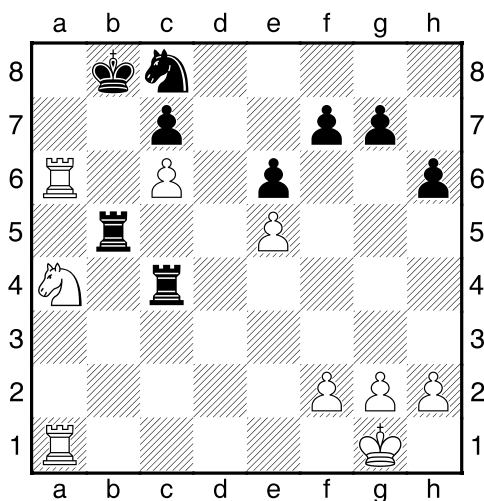
NÁPOVĚDA: 1.Dh7+

Bílý na tahu



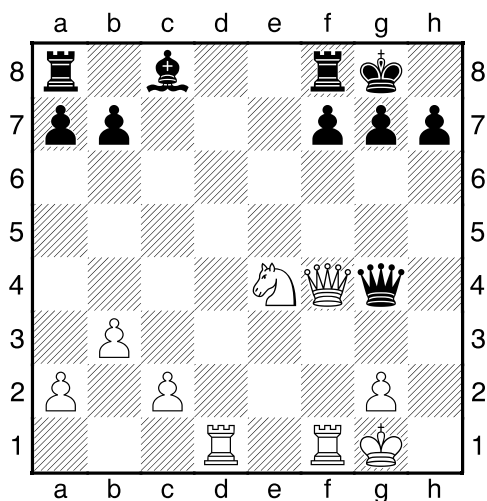
NÁPOVĚDA: 1.Sxe5+

Bílý na tahu



NÁPOVĚDA: 1.Va8+

Bílý na tahu



NÁPOVĚDA: 1.Dxf7+

My-Chess 35 (Střední), 13.05.2024

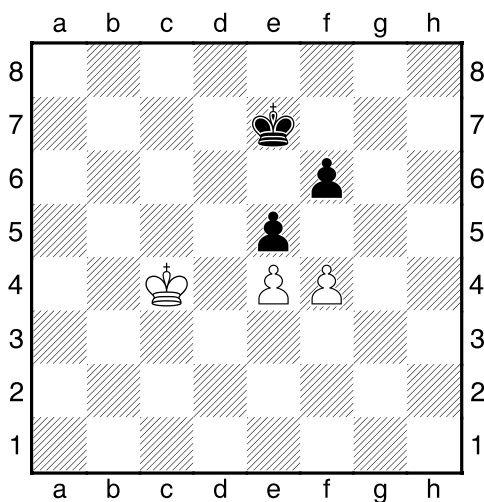
Mezní pole
(ŠK Biolek 007,x)

!!! Pod každý diagram napište první tah a jak partie dopadne !!!

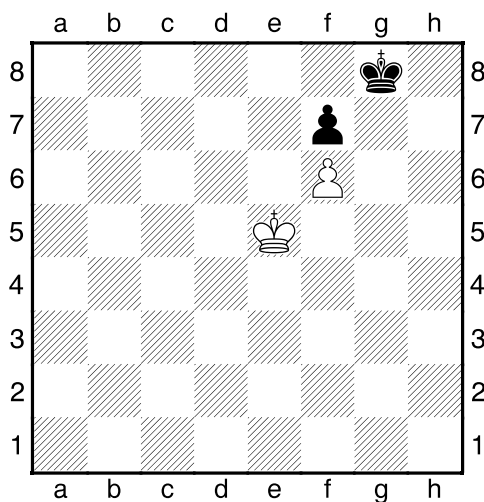
strana 3/3



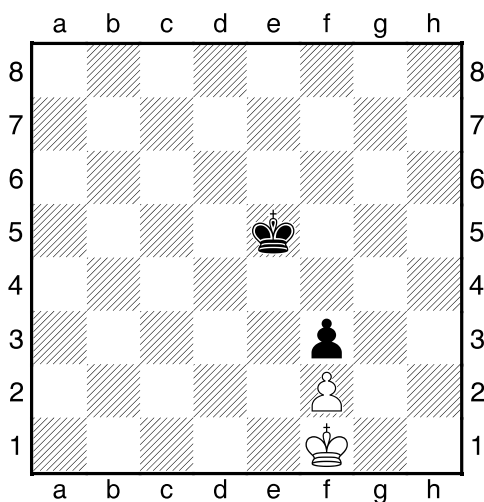
1. příklad Bílý na tahu



2. příklad Bílý na tahu



3. příklad Černý na tahu



4. příklad Bílý na tahu

