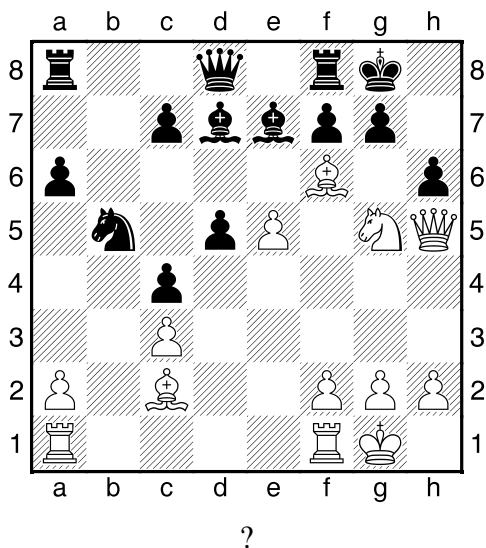
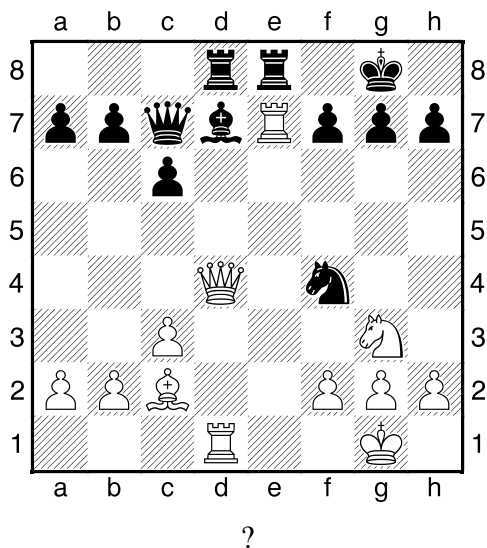


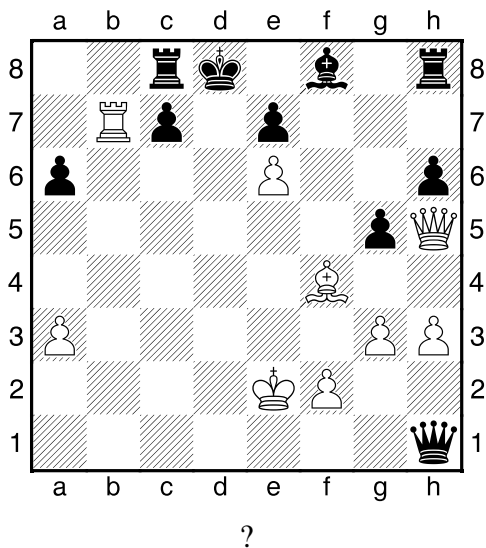
1.příklad Bílý na tahu (pš x432)



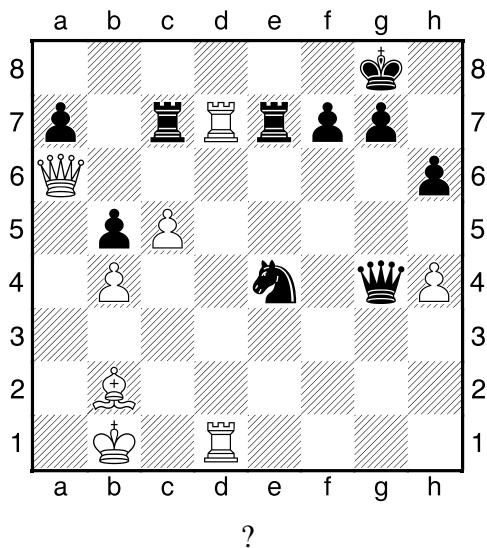
2.příklad Bílý na tahu (pš 2/11)



3.příklad Bílý na tahu (pš x030)



4.příklad Bílý na tahu (pš 3/108)



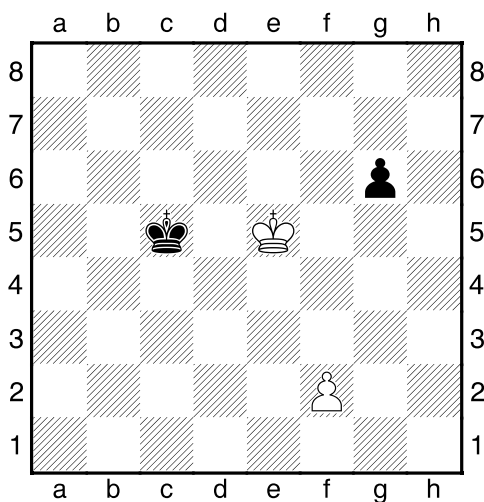
Taktika a koncovky

(ŠK Biolek 010,2)

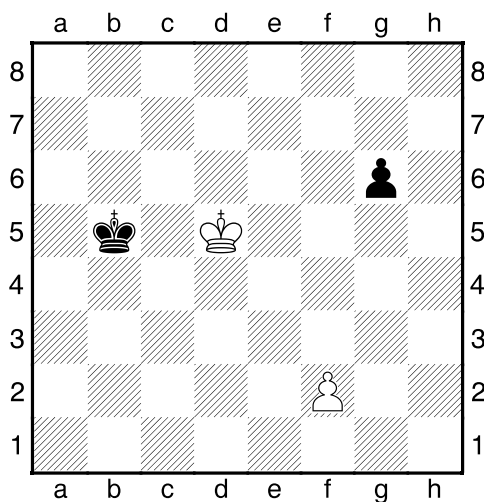
!!! Pod každý diagram napište první tah a jak partie dopadne !!!



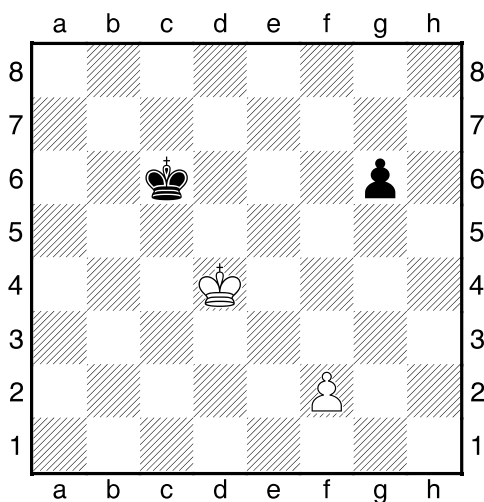
1. příklad Bílý na tahu



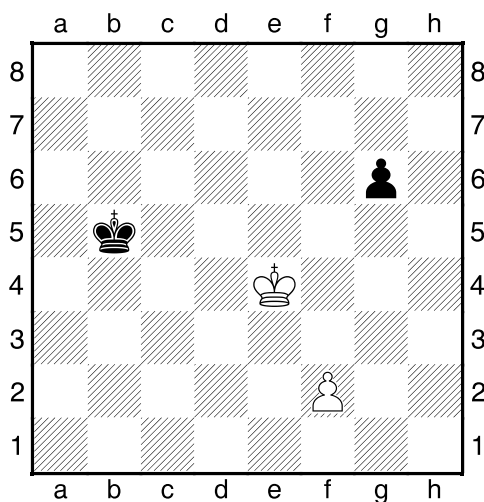
2. příklad Černý na tahu



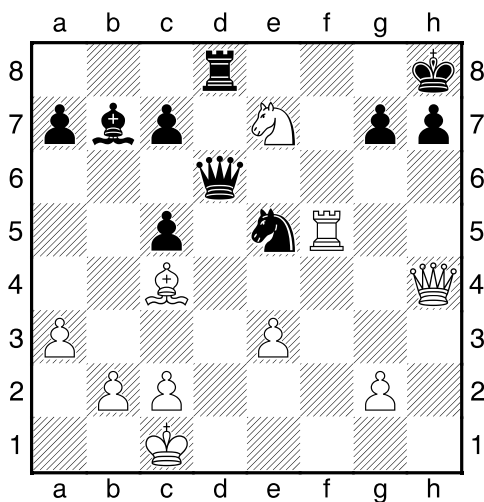
3. příklad Bílý na tahu



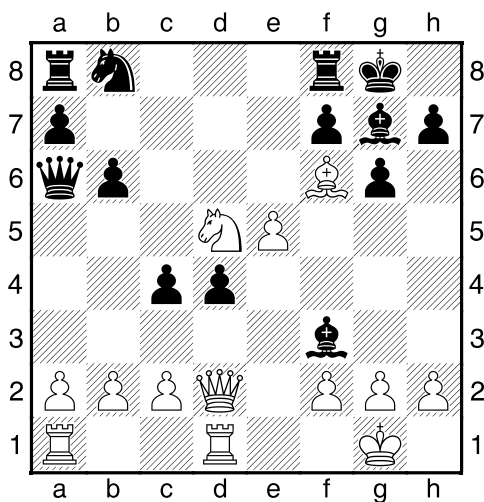
4. příklad Bílý na tahu



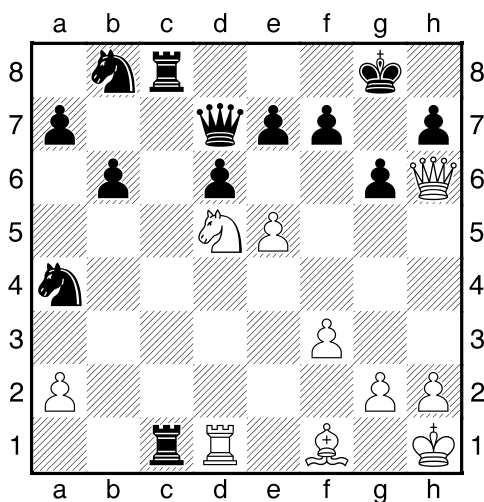
Bílý na tahu



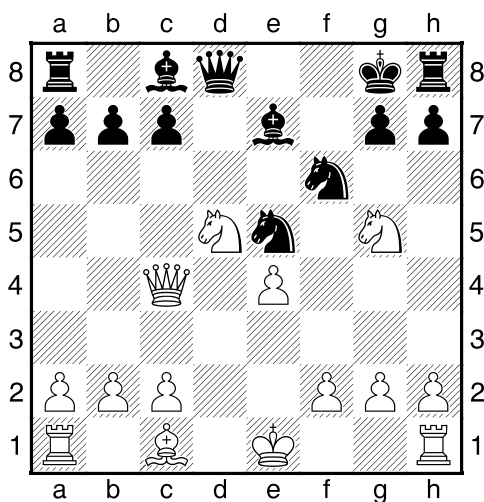
Bílý na tahu



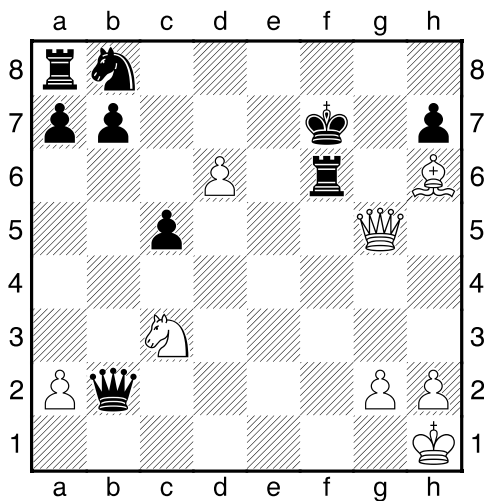
Bílý na tahu



Bílý na tahu



Bílý na tahu



Bílý na tahu

