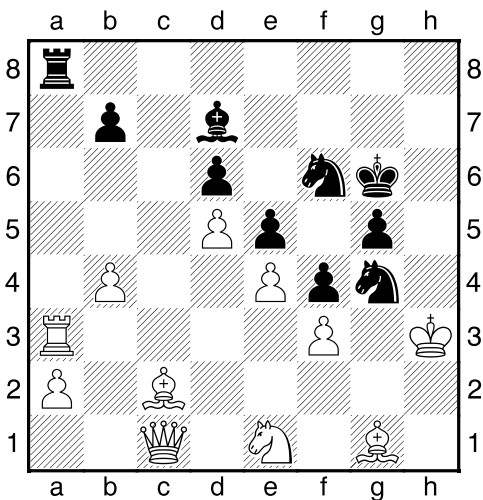
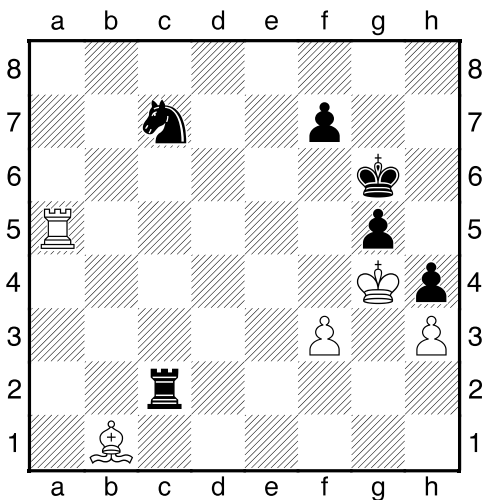


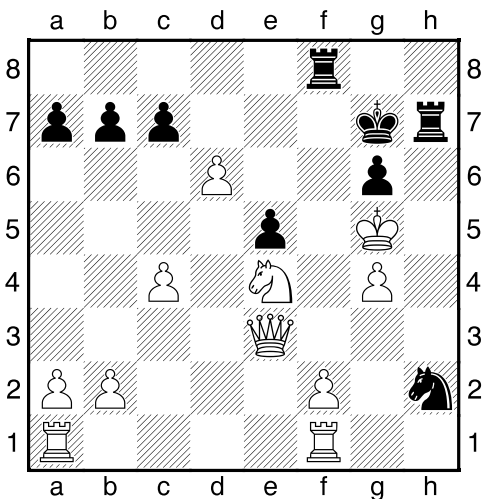
Černý na tahu



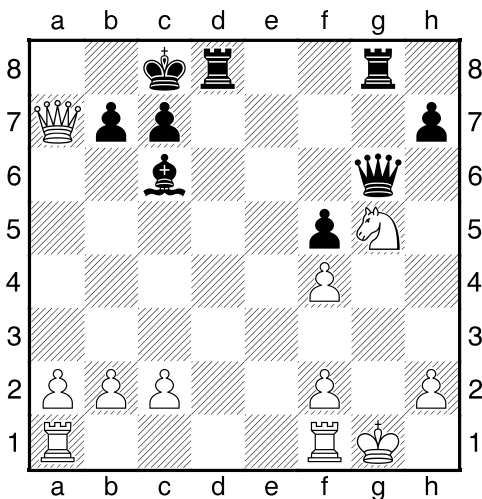
Černý na tahu



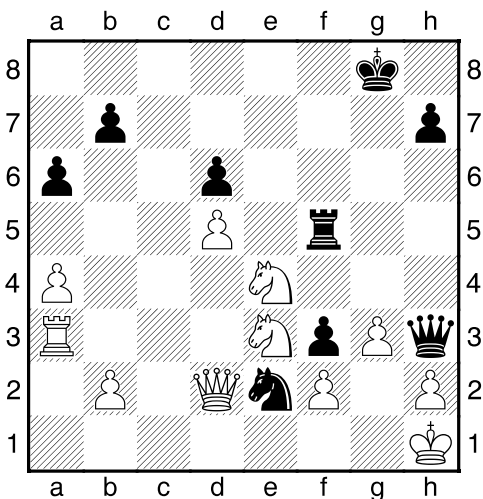
Černý na tahu



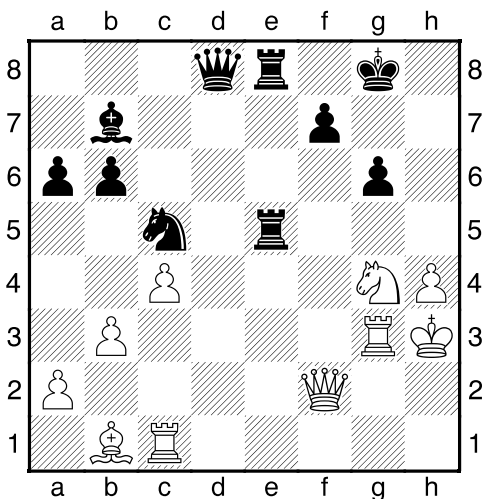
Černý na tahu



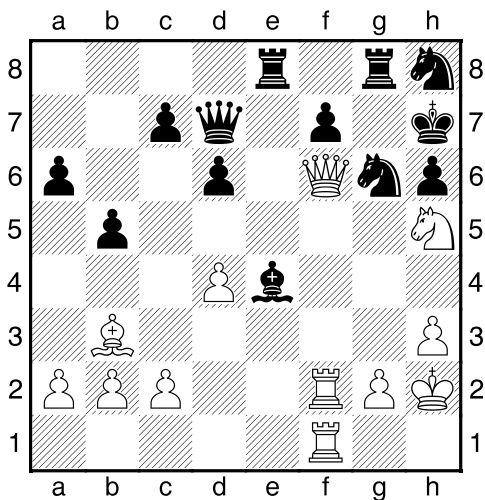
Černý na tahu



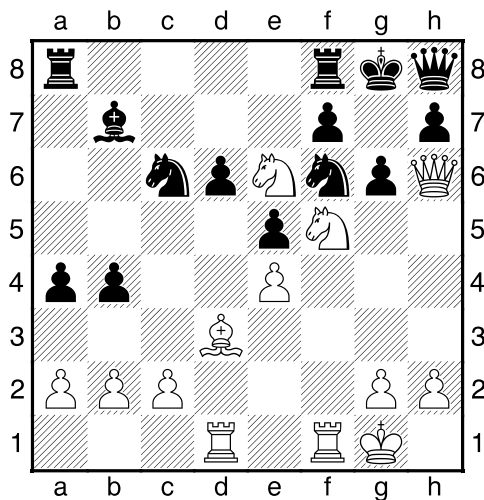
Černý na tahu



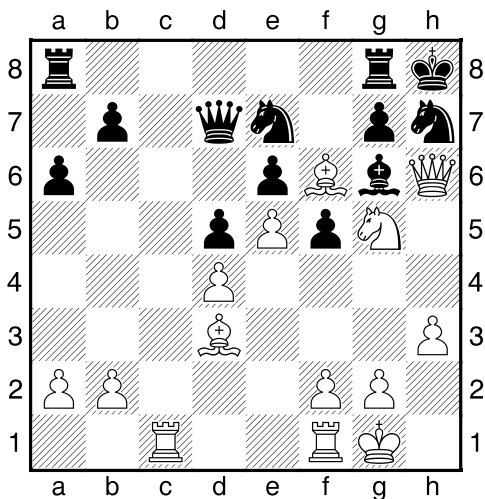
Bílý na tahu



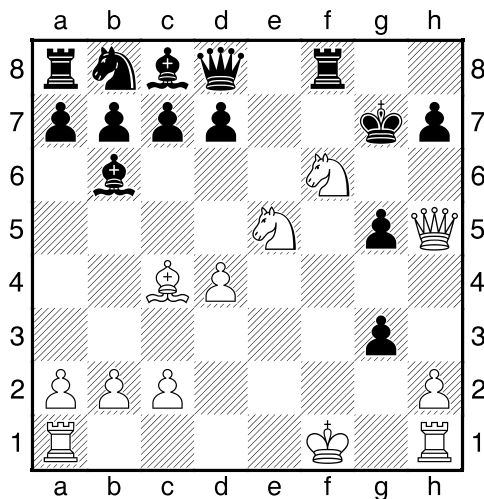
Bílý na tahu



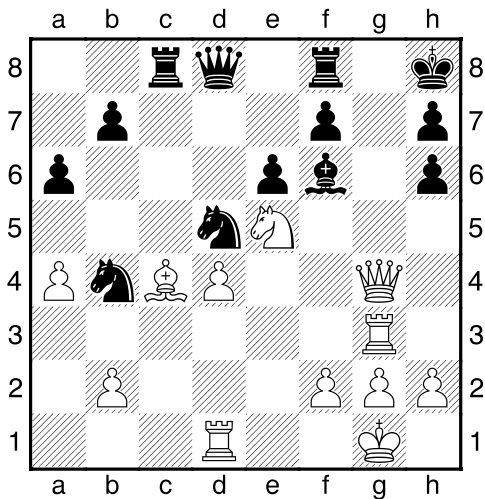
Bílý na tahu



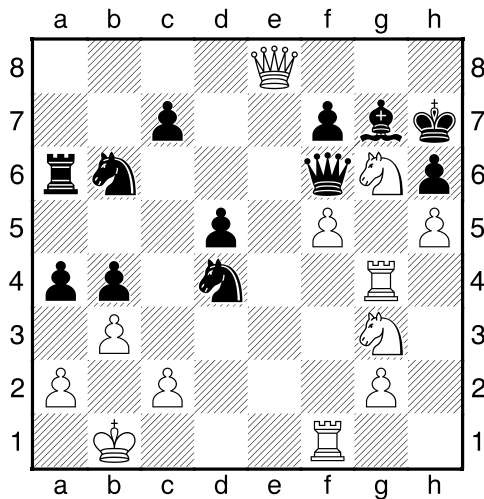
Bílý na tahu



Bílý na tahu



Bílý na tahu

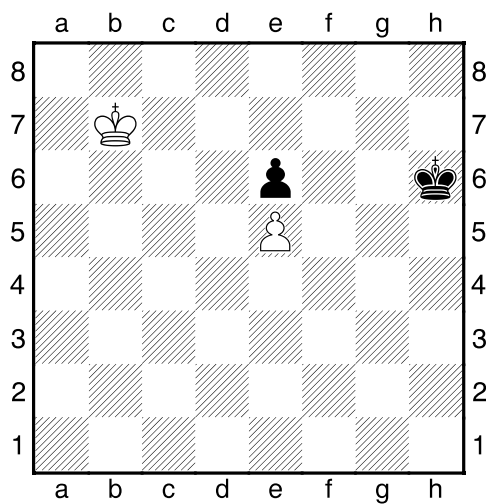


**My-Chess 18 (Střední), 15.01.2024**

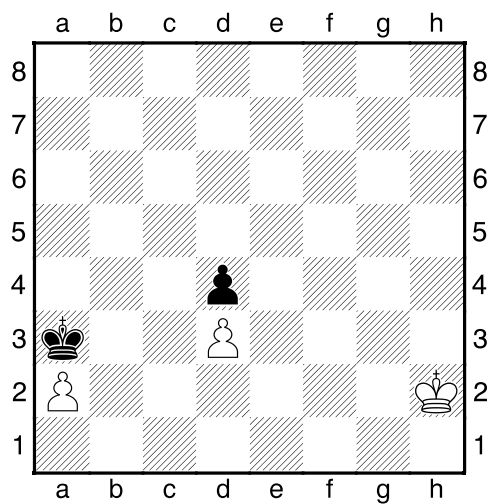
**Past**  
(Biolek 008,4)

**!!! Pod každý diagram napište první tah a jak partie dopadne !!!**

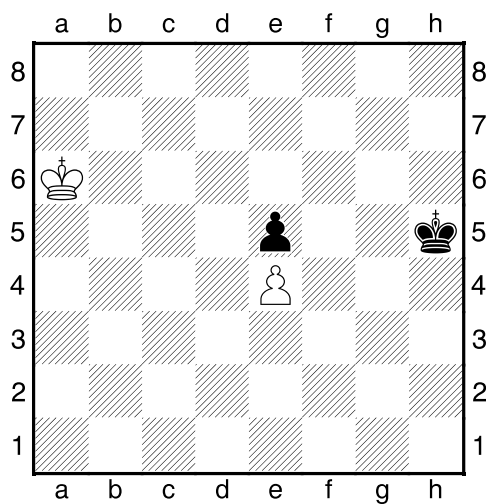
strana 3/3



2. příklad Bílý na tahu



3. příklad Bílý na tahu



4. příklad Bílý na tahu

