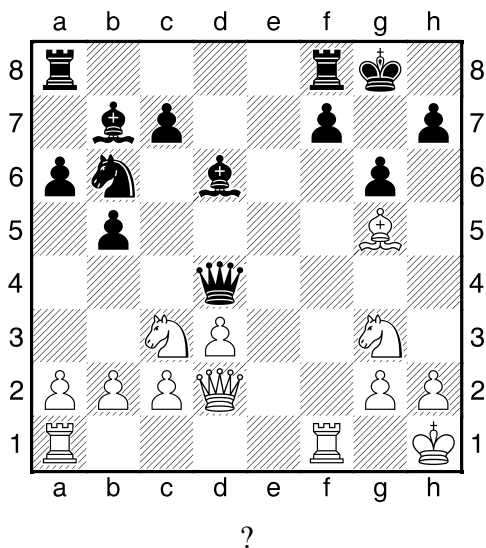
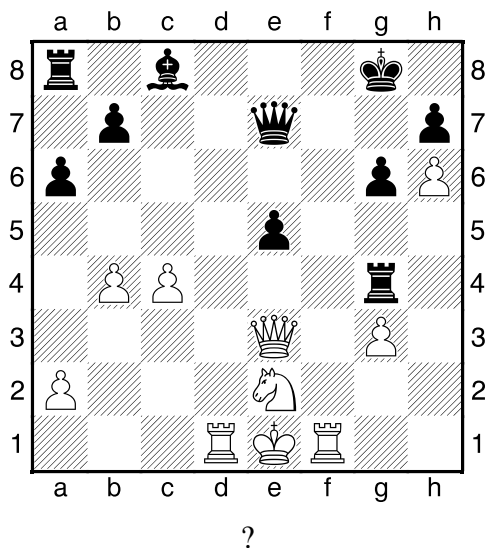


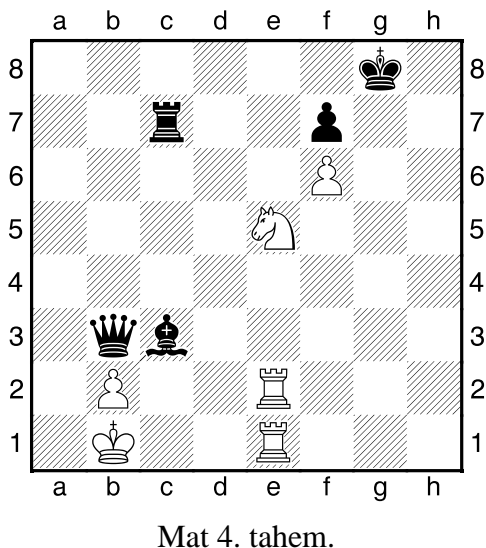
1.příklad Bílý na tahu (pš 2/216)



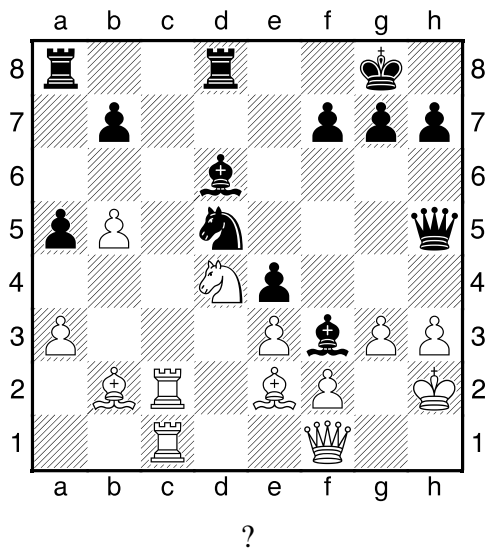
2.příklad Bílý na tahu (pš x038)



3.příklad Bílý na tahu (pš 3/21)



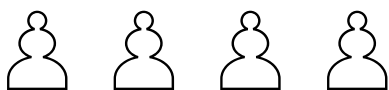
4.příklad Černý na tahu (pš 2/255)



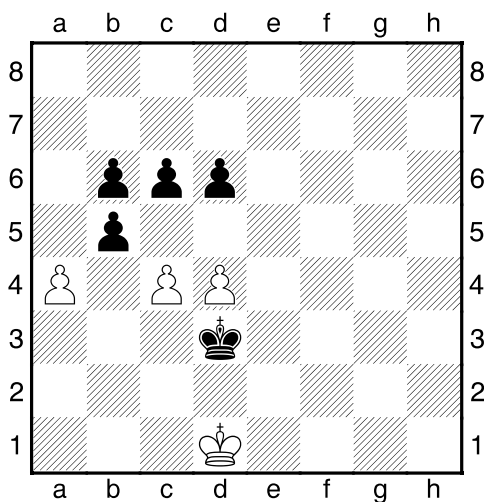
**Taktika a koncovky**

(ŠK Biolek 015,2)

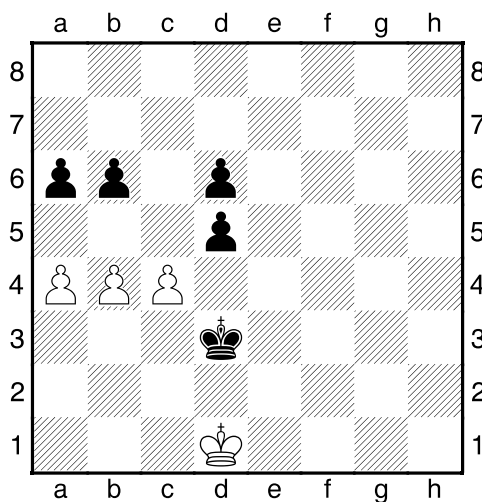
**!!! Pod každý diagram napište první tah a jak partie dopadne !!!**



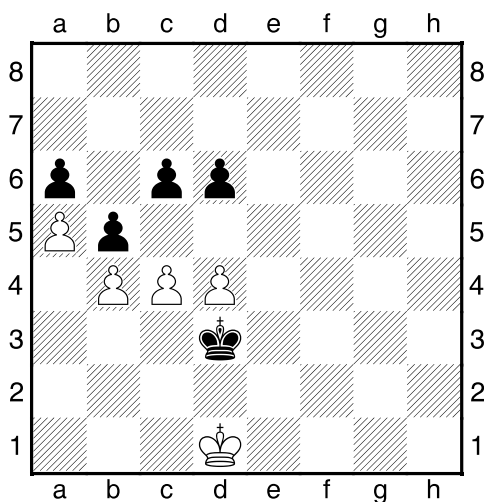
1. příklad Bílý na tahu



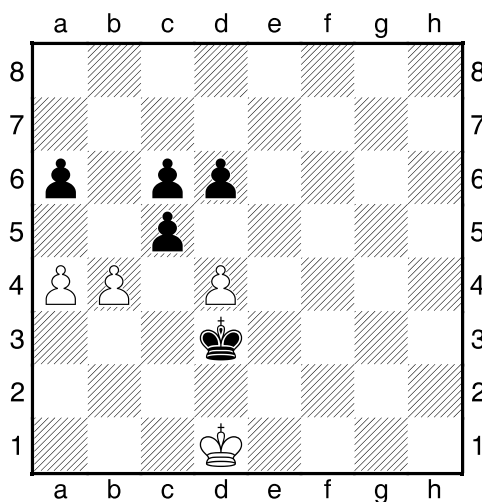
2. příklad Bílý na tahu



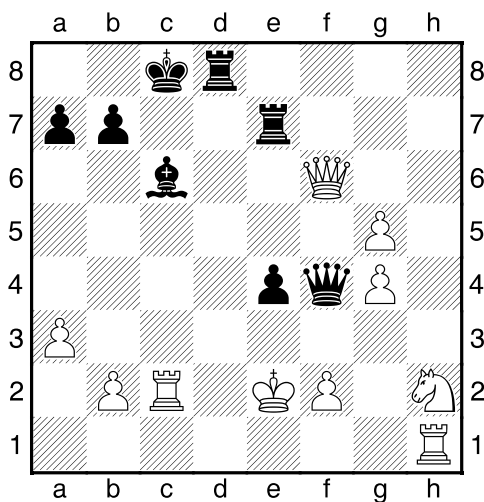
3. příklad Bílý na tahu



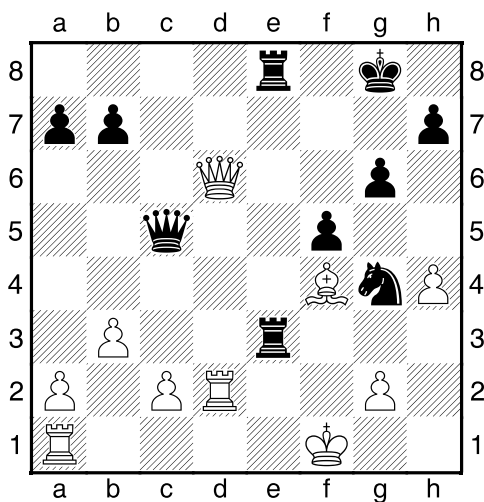
4. příklad Bílý na tahu



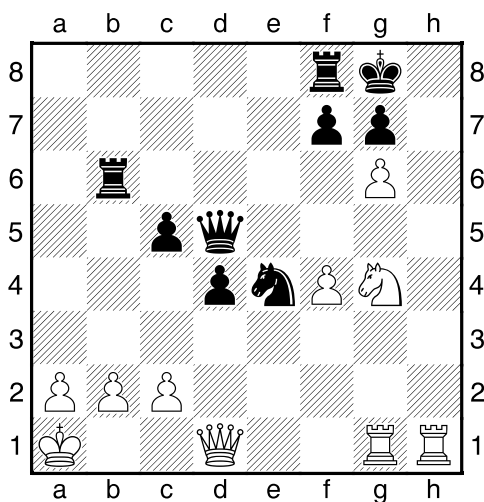
Černý na tahu



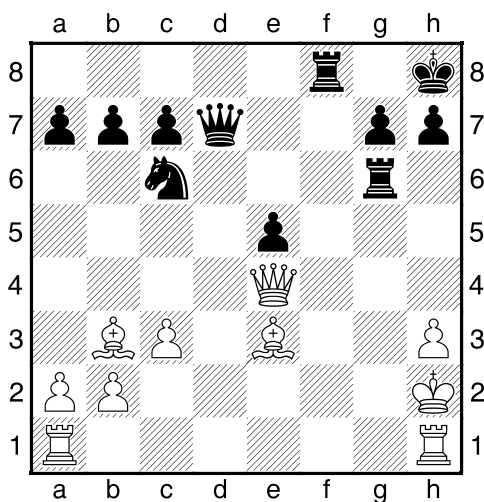
Černý na tahu



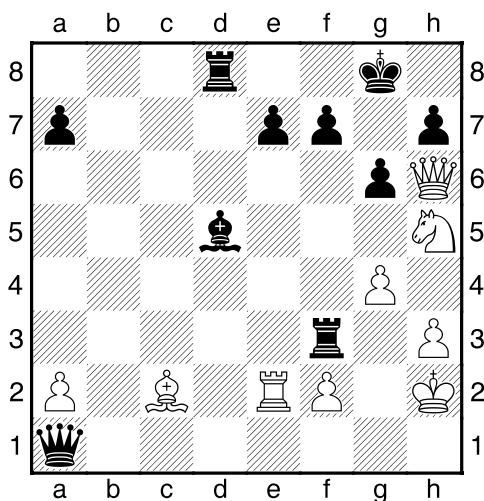
Černý na tahu



Černý na tahu



Černý na tahu



Černý na tahu

