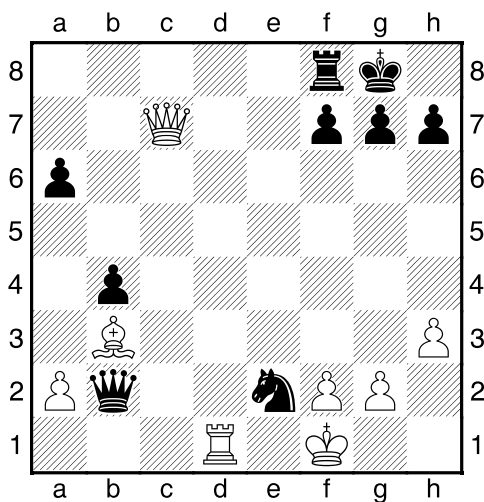
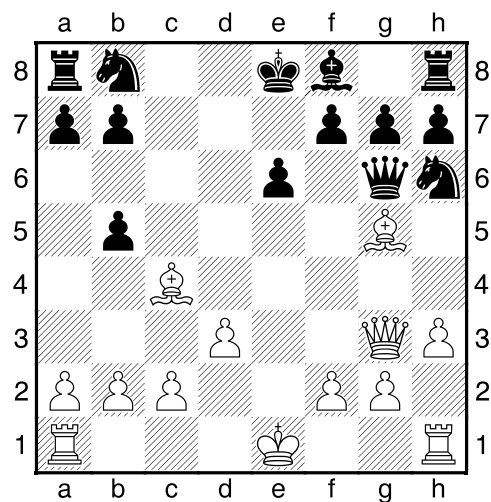


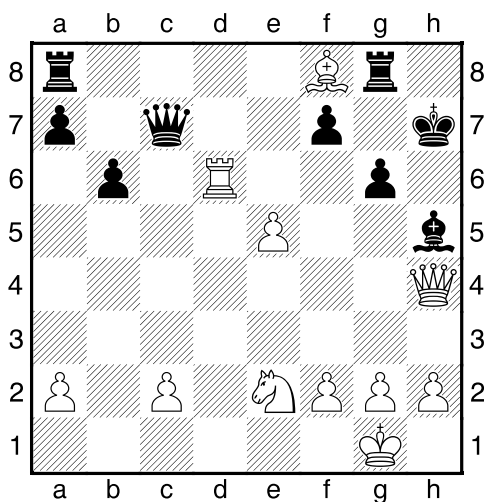
Bílý na tahu



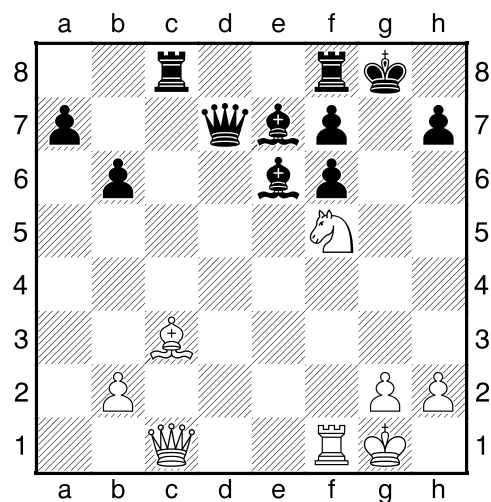
Bílý na tahu



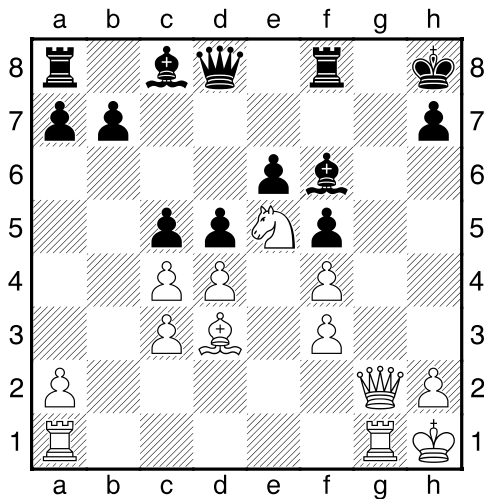
Bílý na tahu



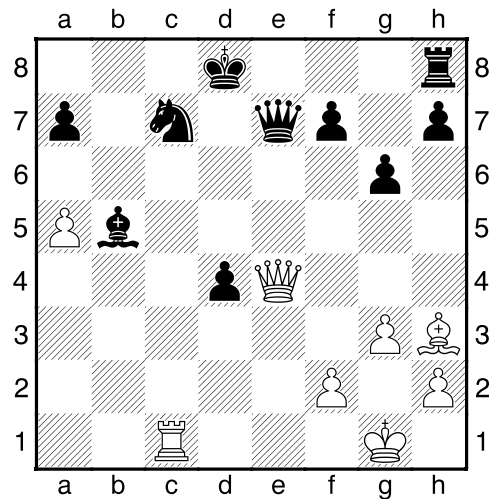
Bílý na tahu



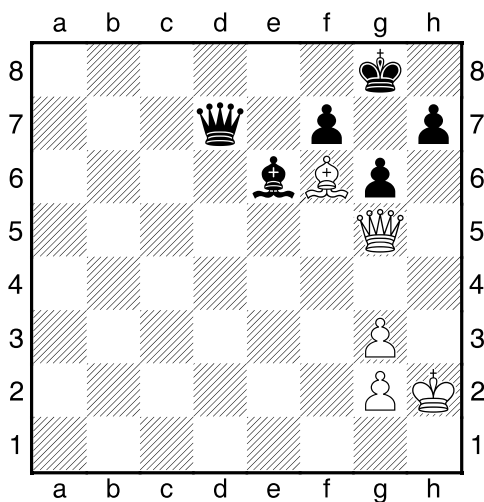
Bílý na tahu



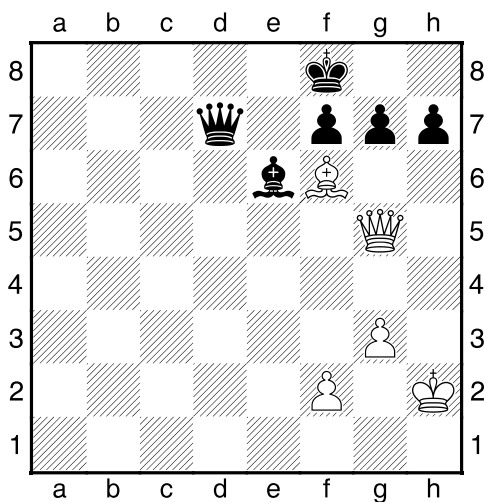
Bílý na tahu



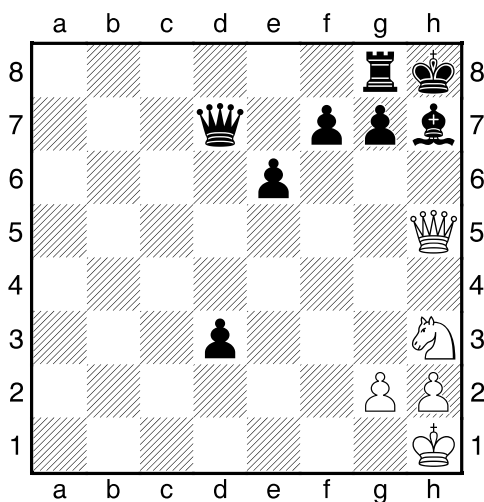
Bílý na tahu



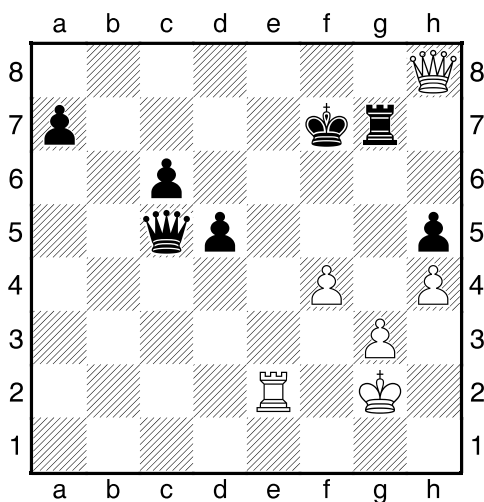
Bílý na tahu



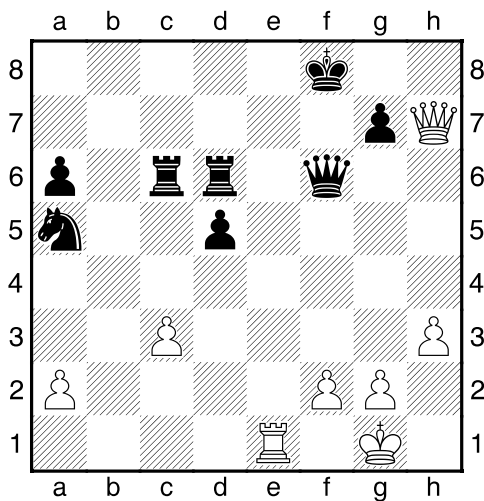
Bílý na tahu



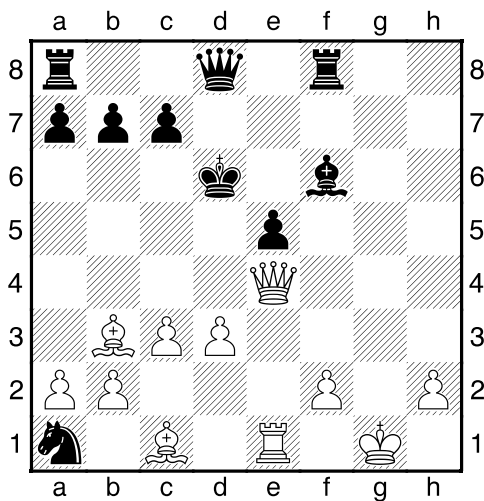
Bílý na tahu



Bílý na tahu



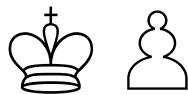
Bílý na tahu



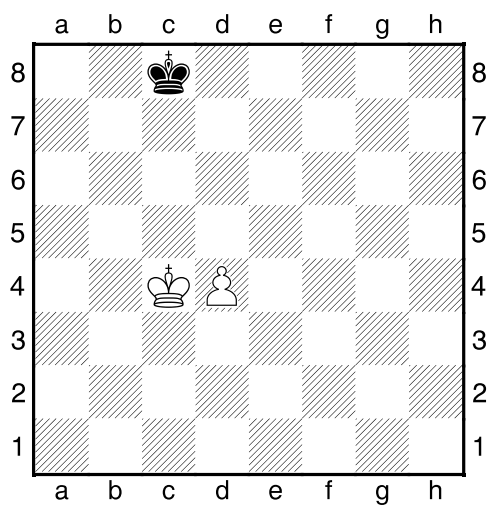
HRADIŠTĚ C, DÚ09a, 01.11.2021,
Taktika a koncovky
(ŠK Biolek 006,4)

!!! Pod každý diagram napište první tah a jak partie dopadne !!!

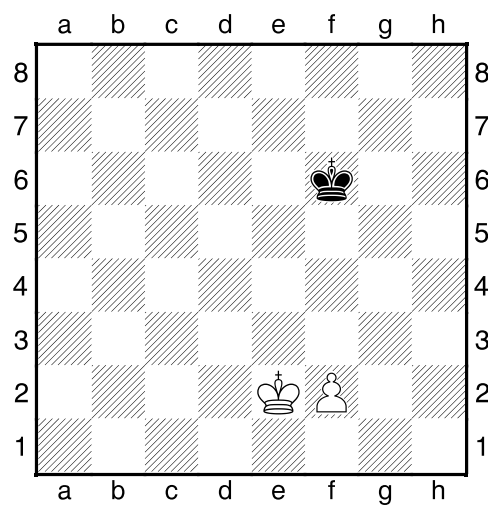
strana 3/3



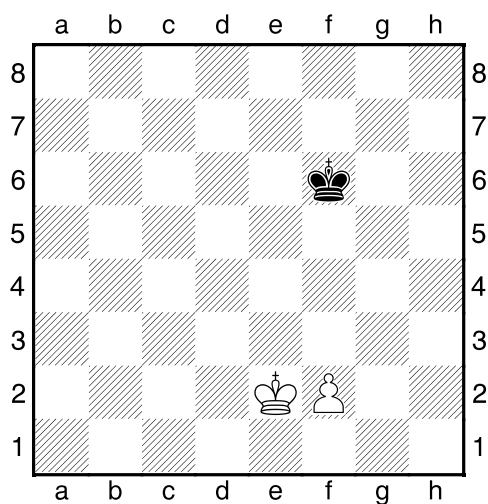
1.příklad Bílý na tahu



2.příklad Bílý na tahu



3.příklad Černý na tahu



4.příklad Bílý na tahu

