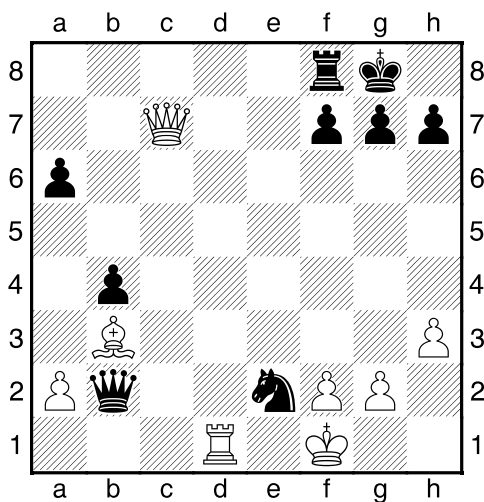
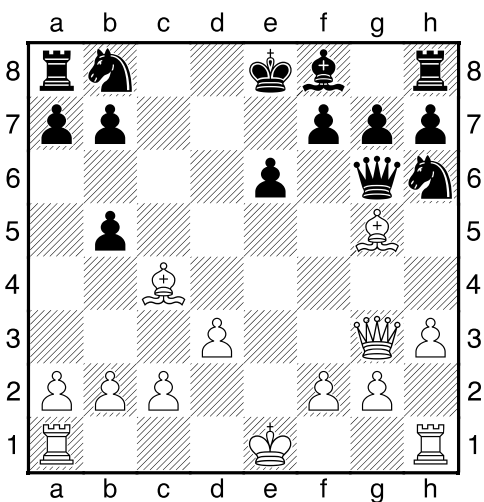


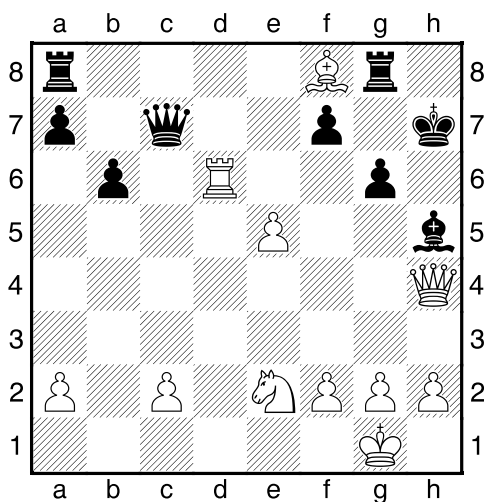
Bílý na tahu



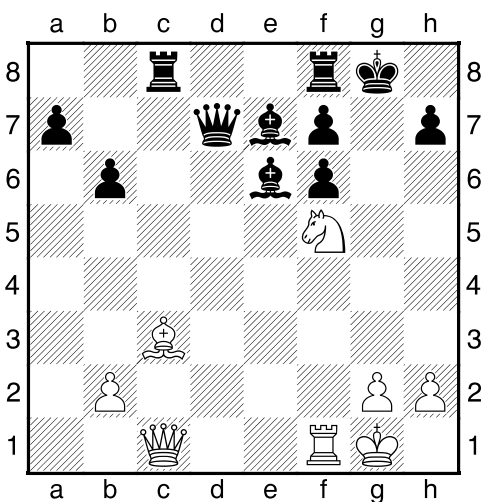
Bílý na tahu



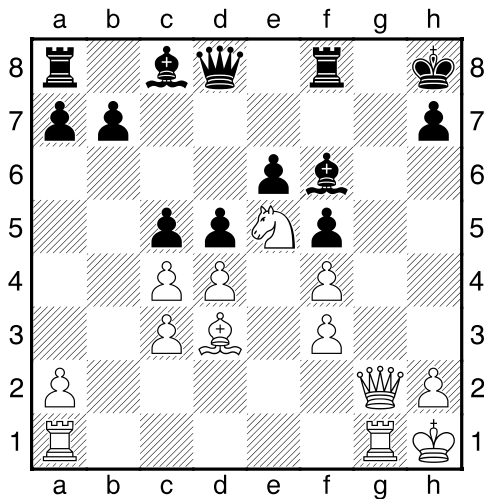
Bílý na tahu



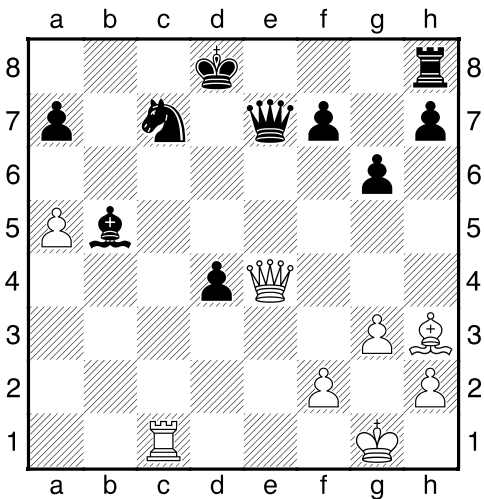
Bílý na tahu



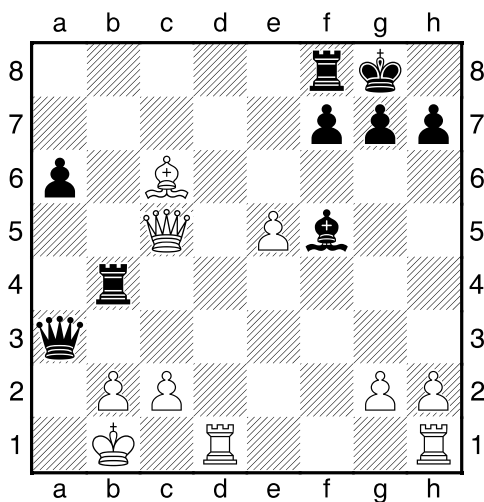
Bílý na tahu



Bílý na tahu

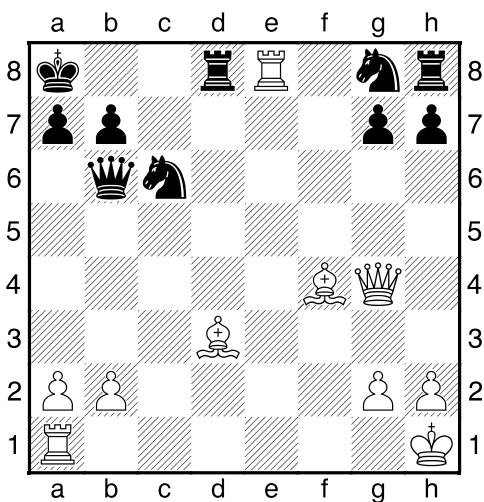


Bílý na tahu



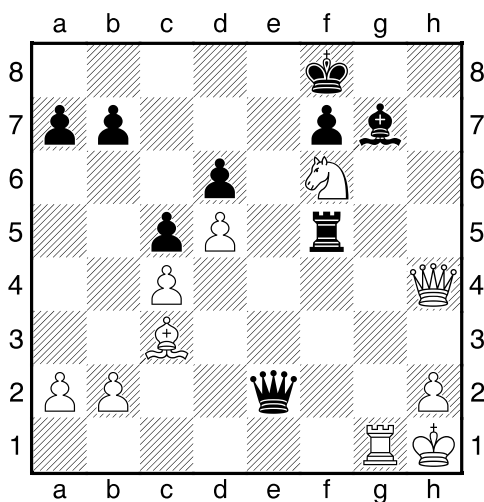
NÁPOVĚDA: 1.Dxf8+

Bílý na tahu



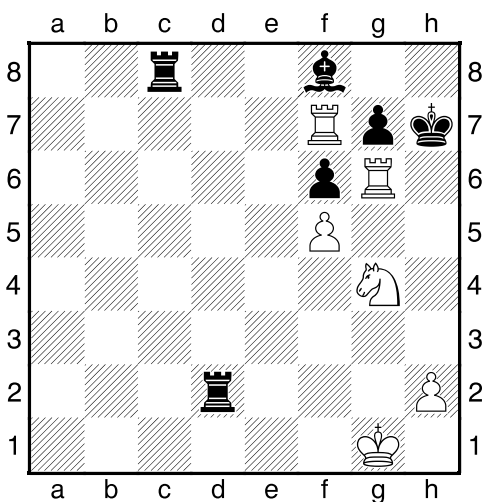
NÁPOVĚDA: 1.Dc8+

Bílý na tahu



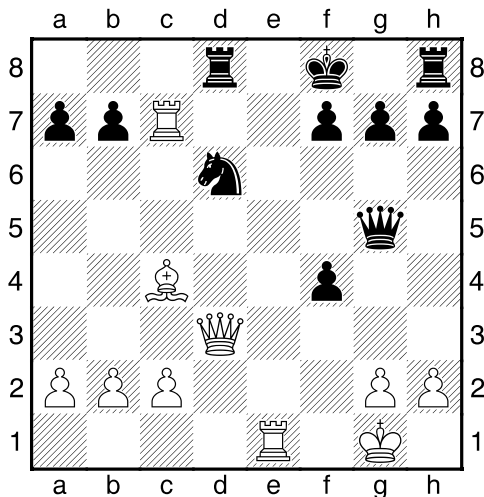
NÁPOVĚDA: 1.Dh8+

Bílý na tahu



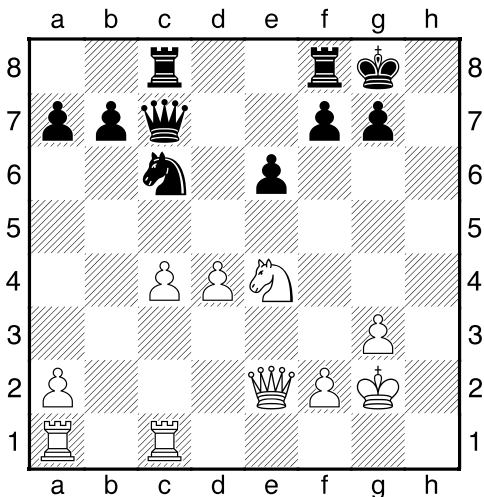
NÁPOVĚDA: 1.Jxf6+

Bílý na tahu



NÁPOVĚDA: 1.Dxd6+

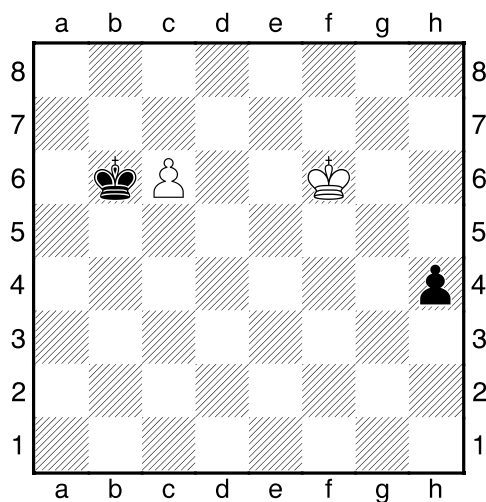
Bílý na tahu



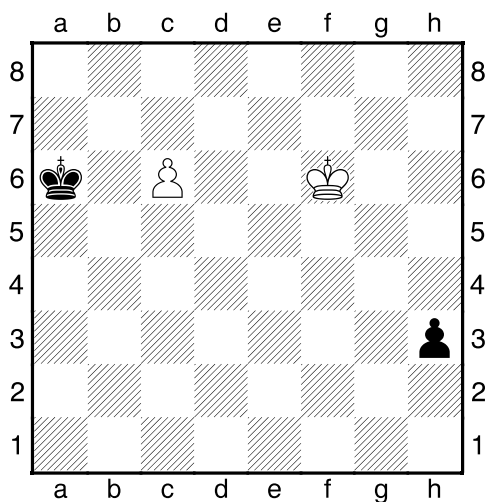
NÁPOVĚDA: 1.Jf6+



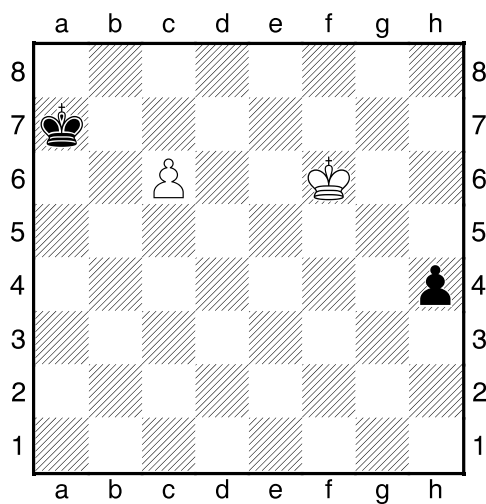
1. příklad Bílý na tahu



2. příklad Bílý na tahu



3. příklad Černý na tahu



4. příklad Bílý na tahu

