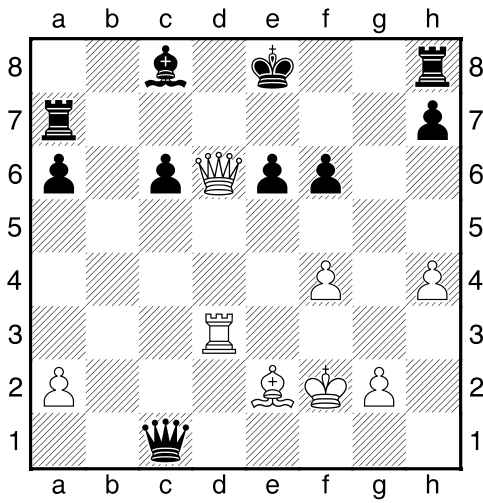
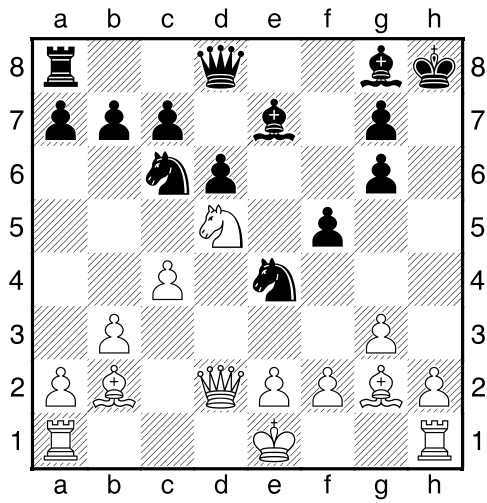


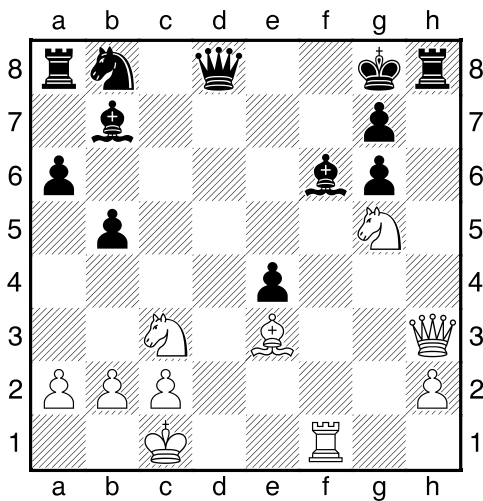
Bílý na tahu



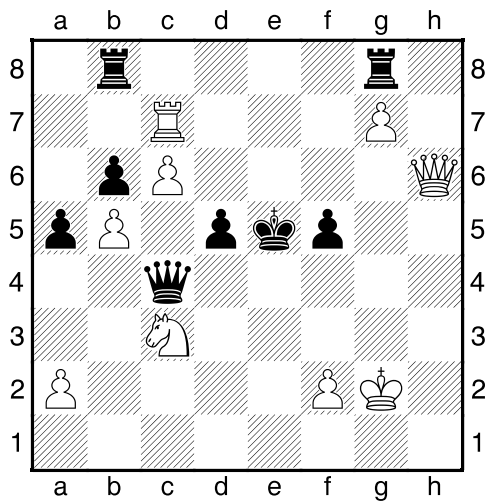
Bílý na tahu



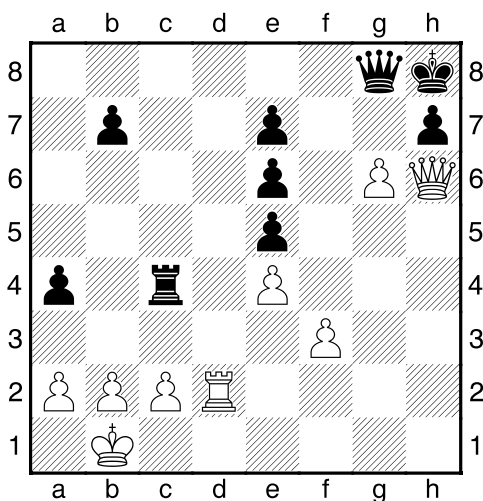
Bílý na tahu



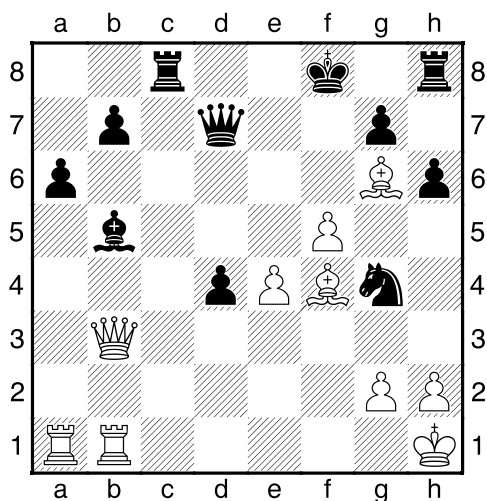
Bílý na tahu



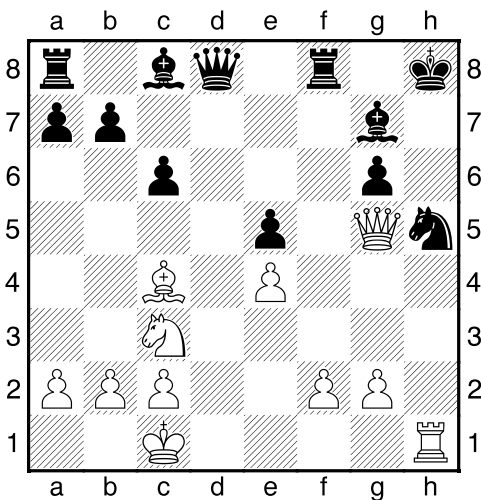
Bílý na tahu



Bílý na tahu

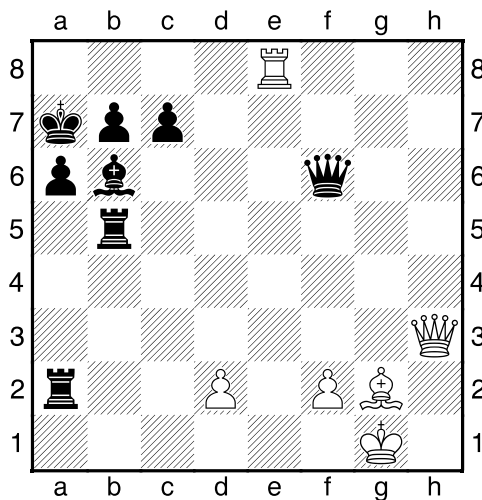


Bílý na tahu



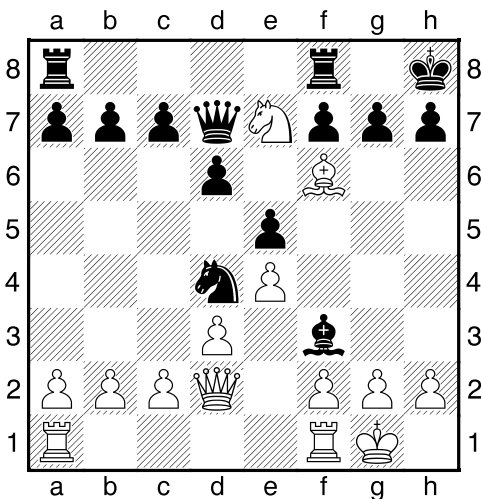
NÁPOVĚDA: 1.Vxh5+

Bílý na tahu



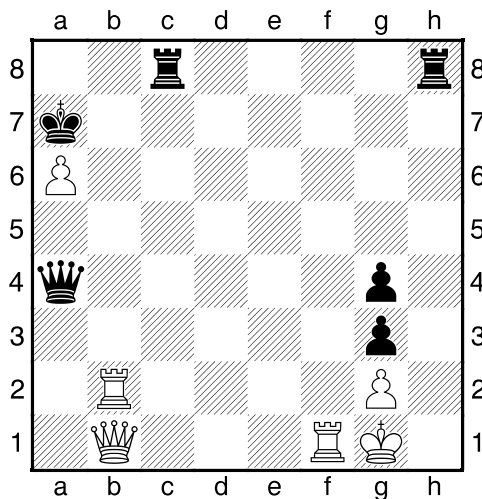
NÁPOVĚDA: 1.Va8+

Bílý na tahu



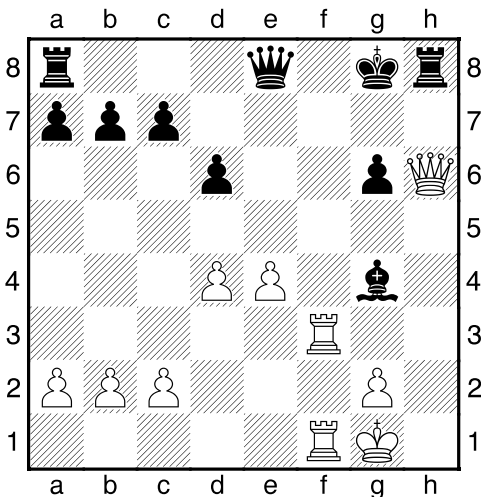
NÁPOVĚDA: 1.Sxg7+

Bílý na tahu



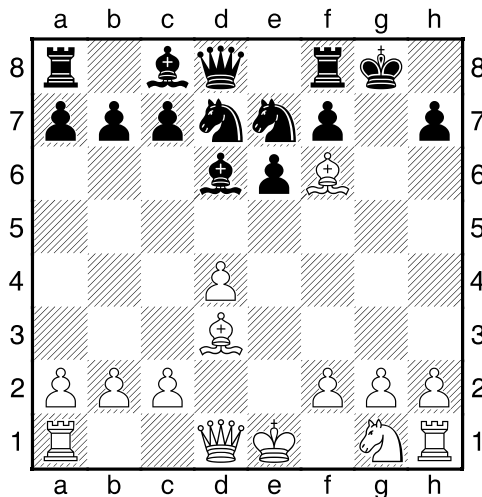
NÁPOVĚDA: 1.Vb7+

Bílý na tahu



NÁPOVĚDA: 1.Vf8+

Bílý na tahu

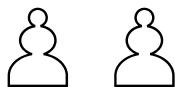


NÁPOVĚDA: 1.Sxh7+

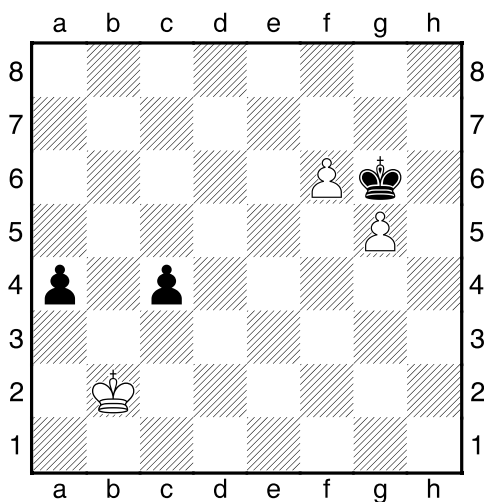
My-Chess 32 (Střední), 22.04.2024
Samokrvčí formace
 (ŠK Biolek 012,2)

!!! Pod každý diagram napište první tah a jak partie dopadne !!!

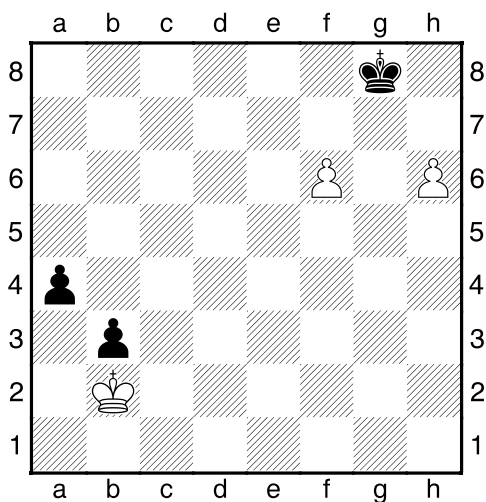
strana 3/3



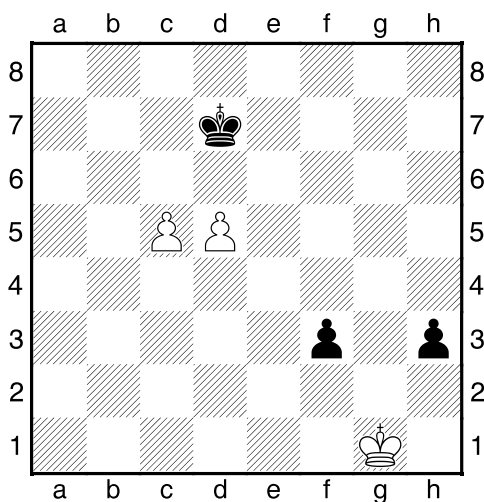
1. příklad Bílý na tahu



2. příklad Bílý na tahu



3. příklad Černý na tahu



4. příklad Černý na tahu

