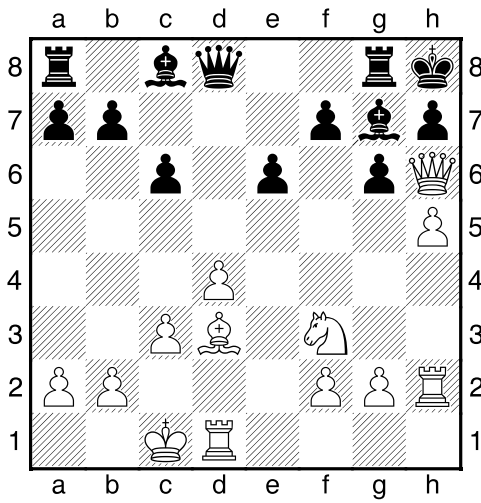
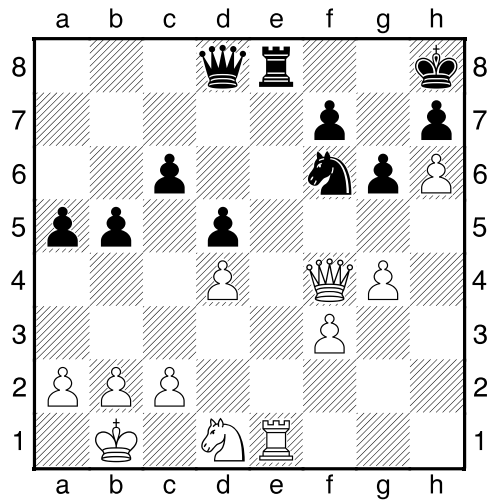


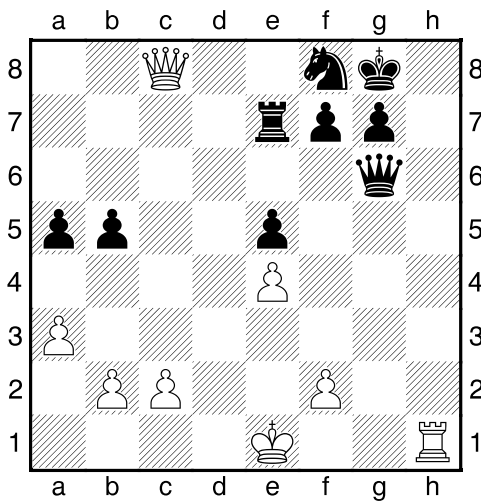
Bílý na tahu



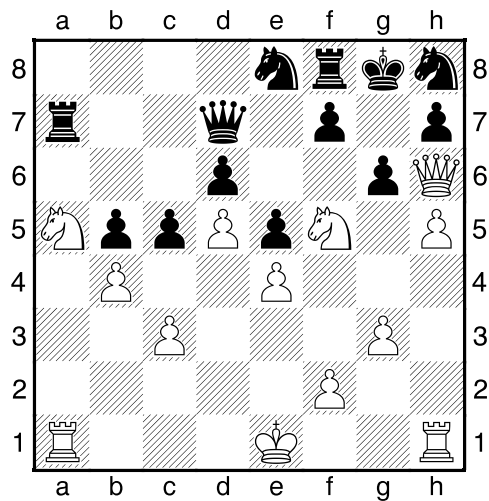
Bílý na tahu



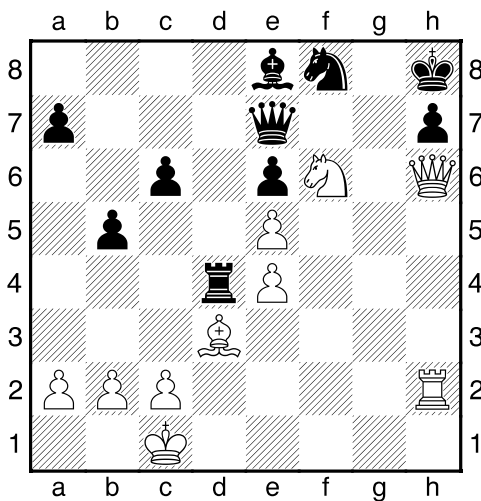
Bílý na tahu



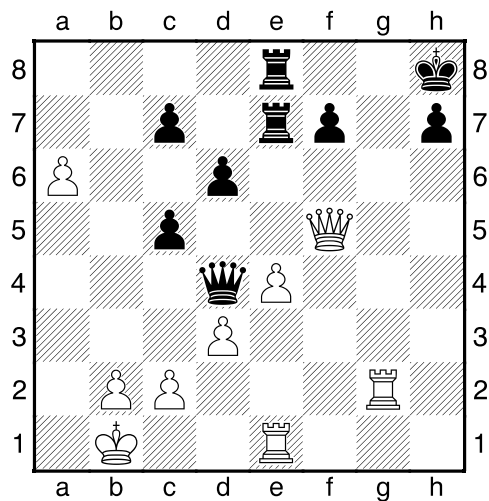
Bílý na tahu



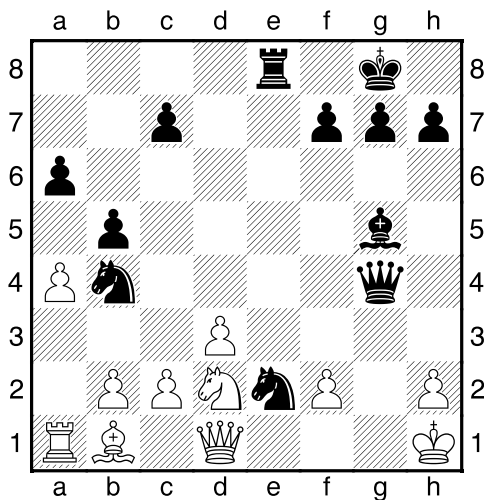
Bílý na tahu



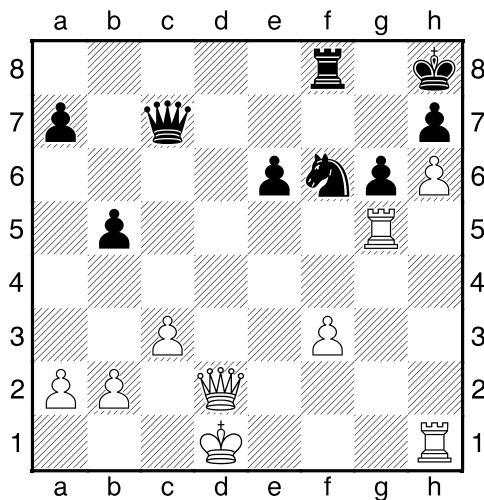
Bílý na tahu



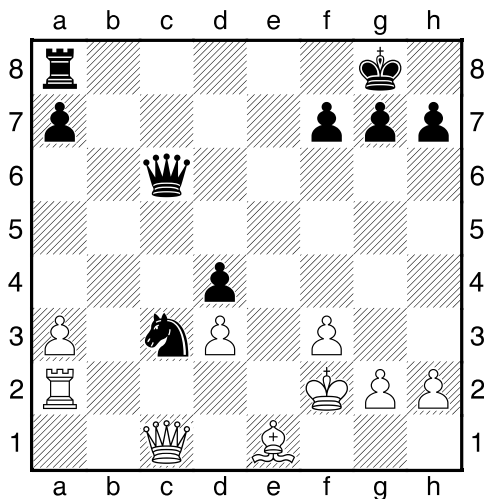
Černý na tahu



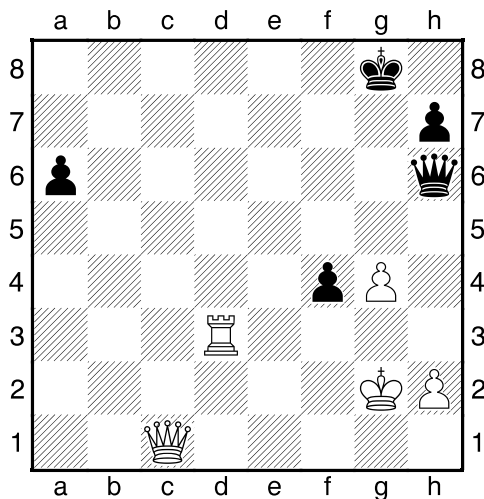
Černý na tahu



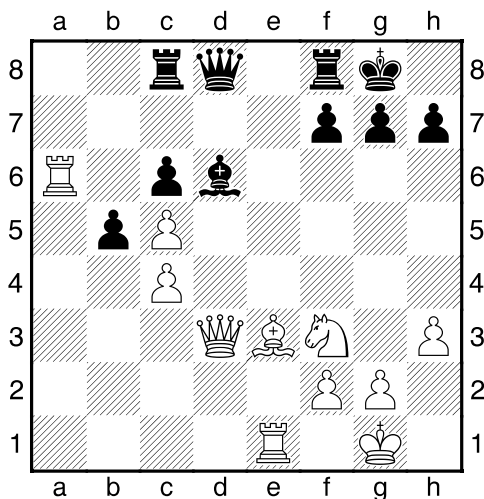
Černý na tahu



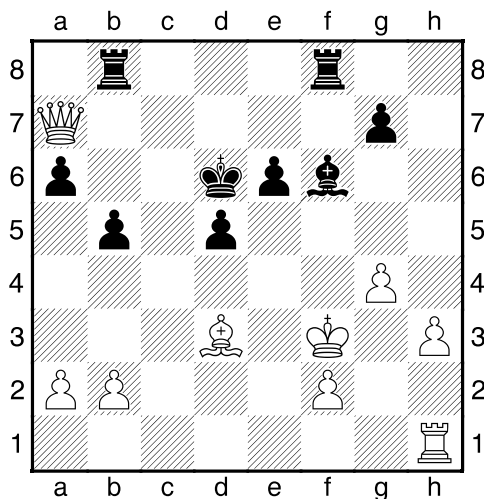
Černý na tahu



Černý na tahu



Černý na tahu

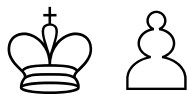


**My-Chess 04 (Střední), 25.09.2023**

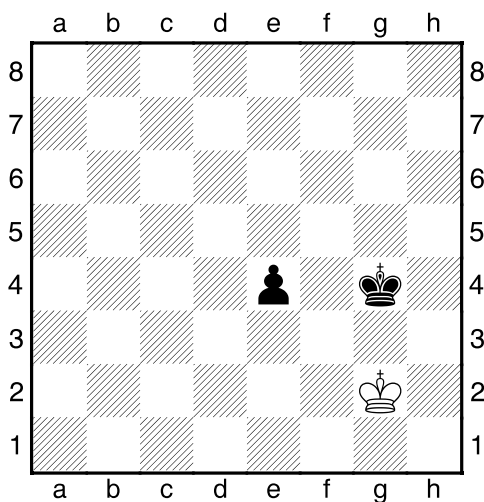
**Boj o kritická pole b-g**

(ŠK Biolek 007,3)

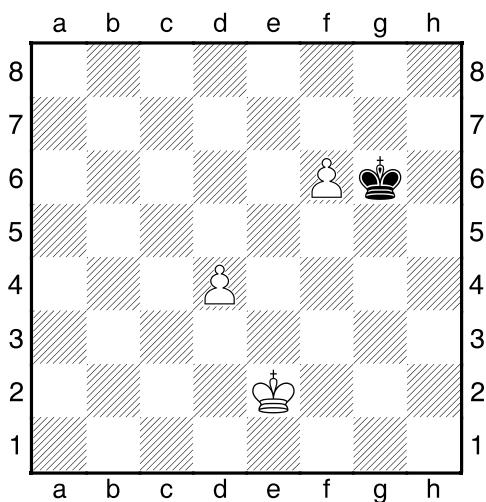
**!!! Pod každý diagram napište  
první tah a jak partie dopadne !!!**  
(navíc můžete v diagramech označit KP)  
**strana 3/3**



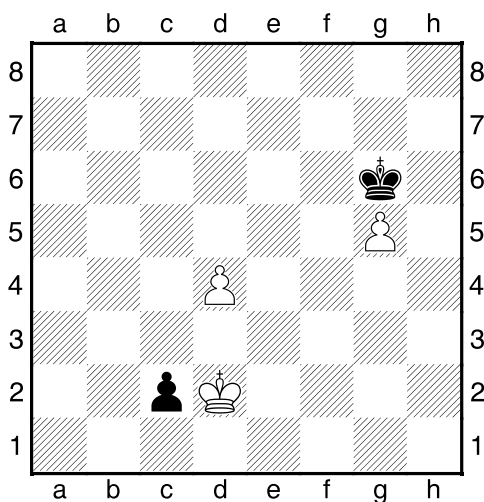
1. příklad Černý na tahu



2. příklad Bílý na tahu



3. příklad Bílý na tahu



4. příklad Černý na tahu

