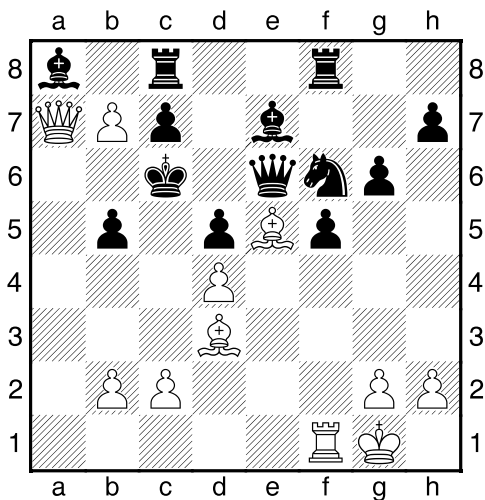
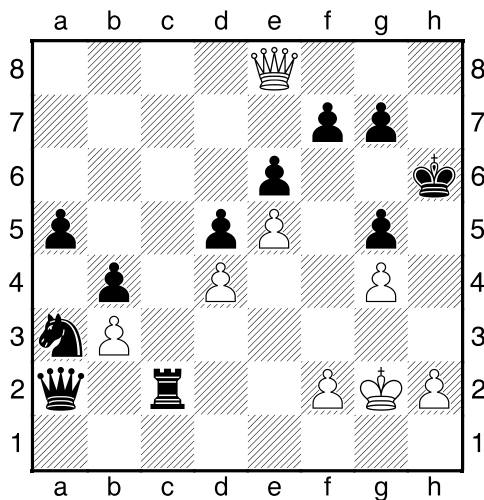


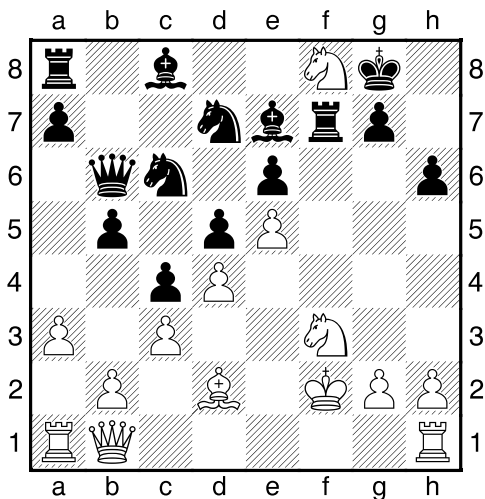
Bílý na tahu



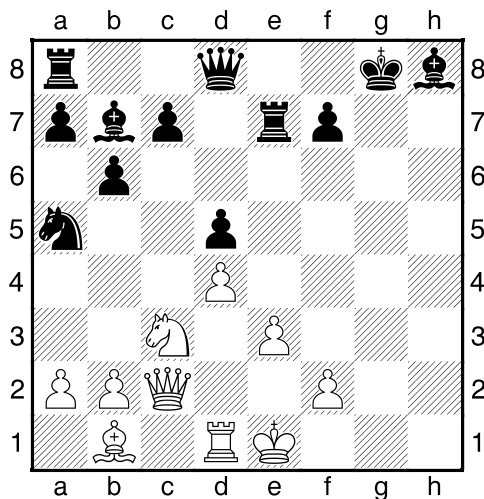
Bílý na tahu



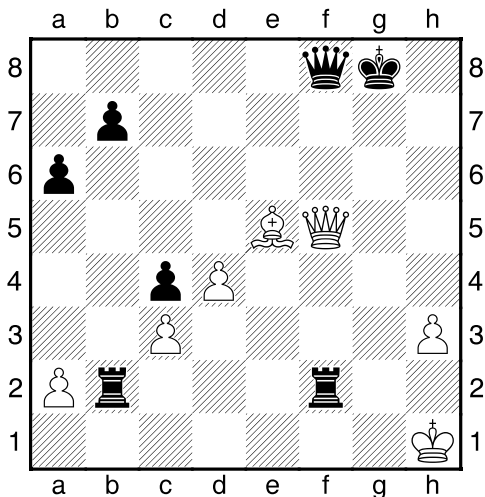
Bílý na tahu



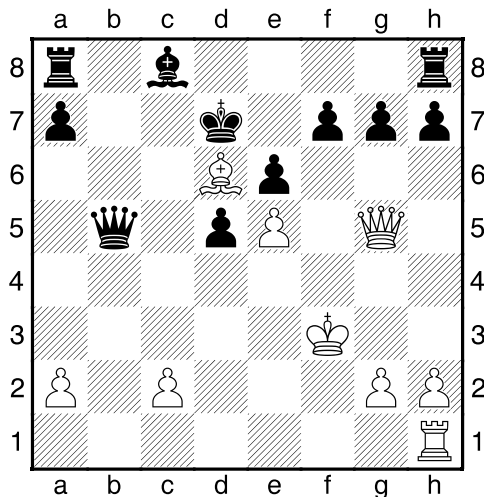
Bílý na tahu



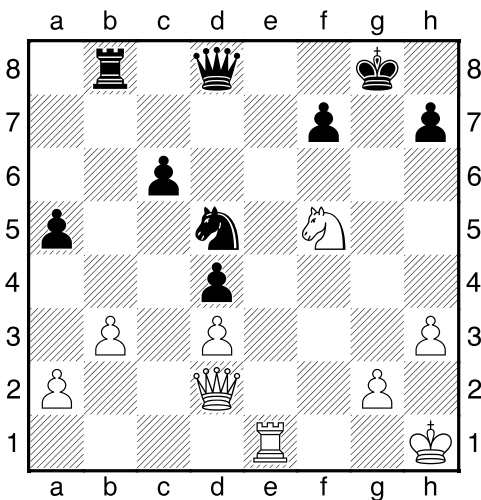
Bílý na tahu



Bílý na tahu

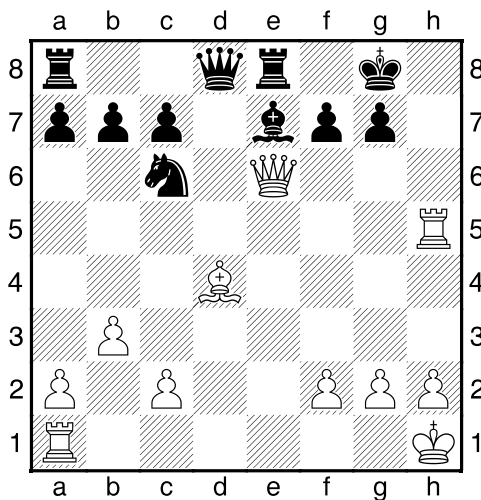


Bílý na tahu



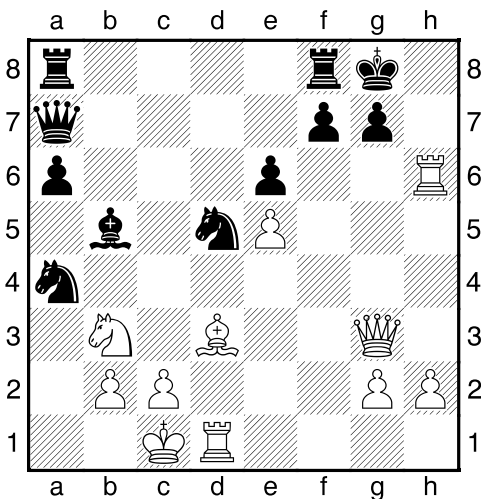
NÁPOVĚDA: 1.Ve8+

Bílý na tahu



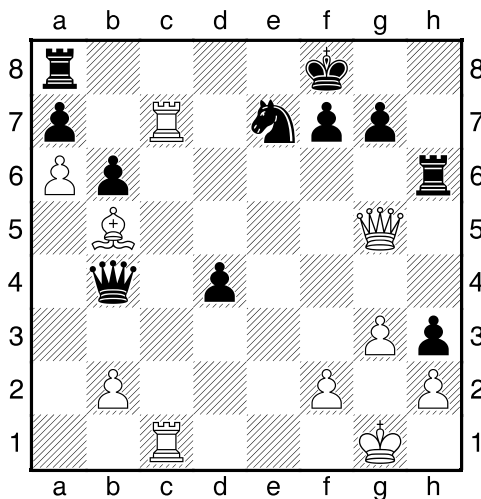
NÁPOVĚDA: 1.Vh8+

Bílý na tahu



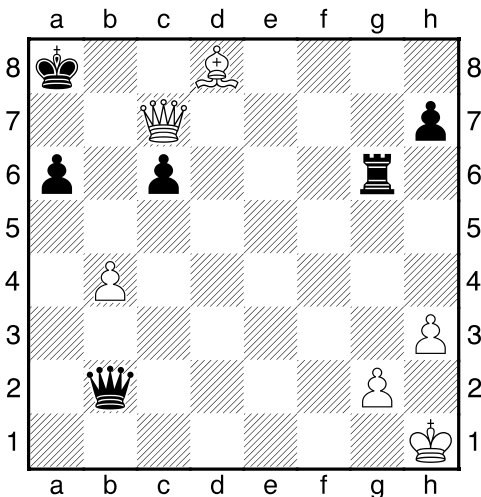
NÁPOVĚDA: 1.Vh8+

Bílý na tahu



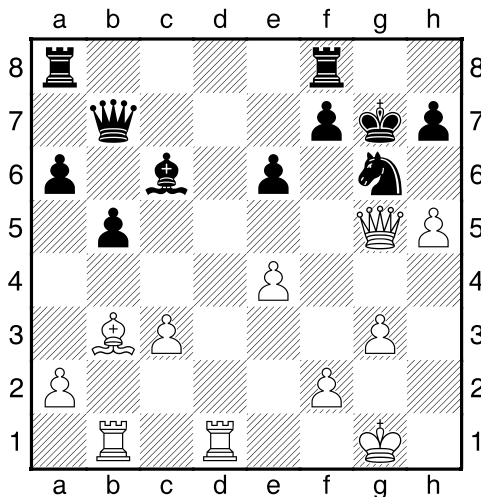
NÁPOVĚDA: 1.Vc8+

Bílý na tahu



NÁPOVĚDA: 1.Dc8+

Bílý na tahu

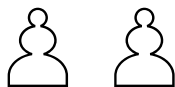


NÁPOVĚDA: 1.h6+

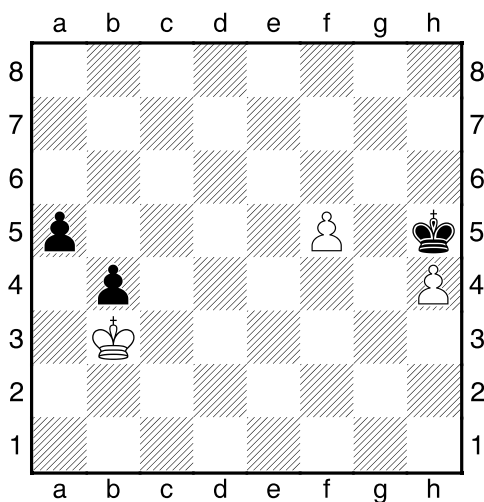
My-Chess 33 (Střední), 29.04.2024
Samokrvčí formace
 (ŠK Biolek 012,2)

!!! Pod každý diagram napište první tah a jak partie dopadne !!!

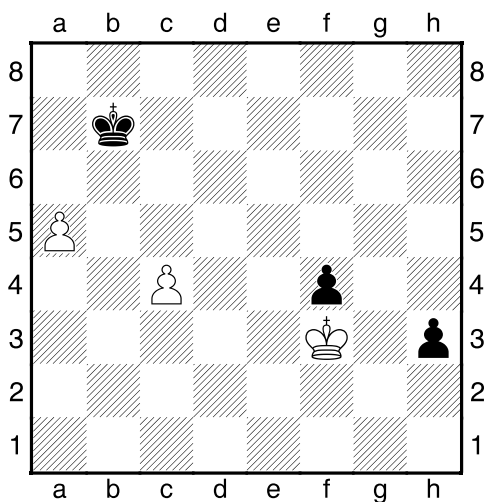
strana 3/3



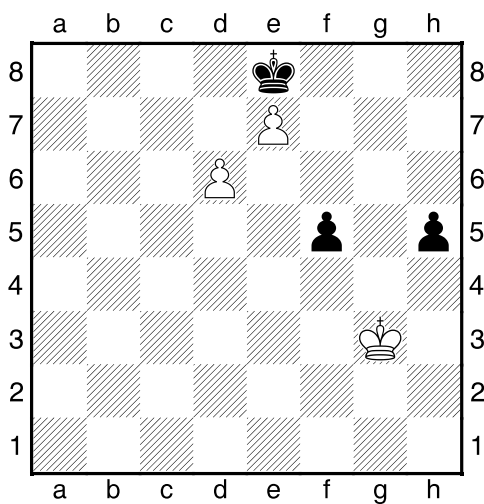
1. příklad Černý na tahu



2. příklad Bílý na tahu



3. příklad Bílý na tahu



4. příklad Bílý na tahu

