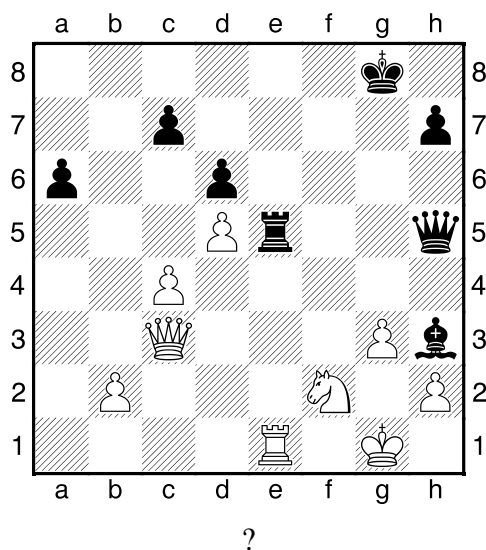
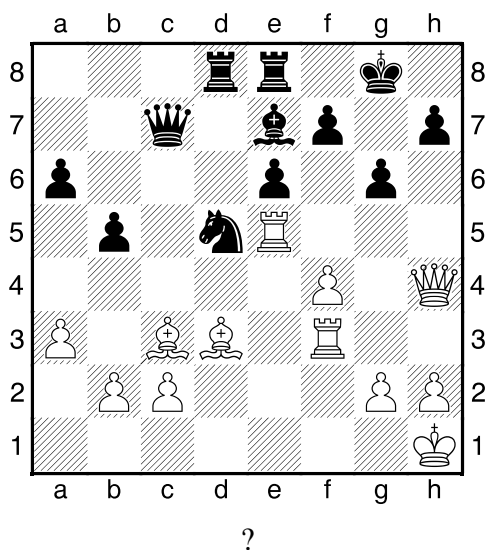


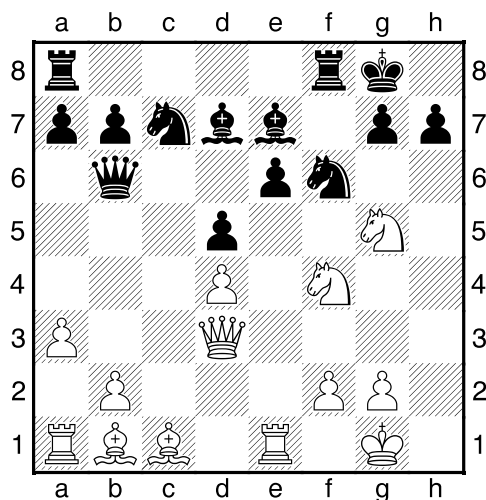
1. příklad Černý na tahu (pš 2/129)



2. příklad Bílý na tahu (pš 2/126)

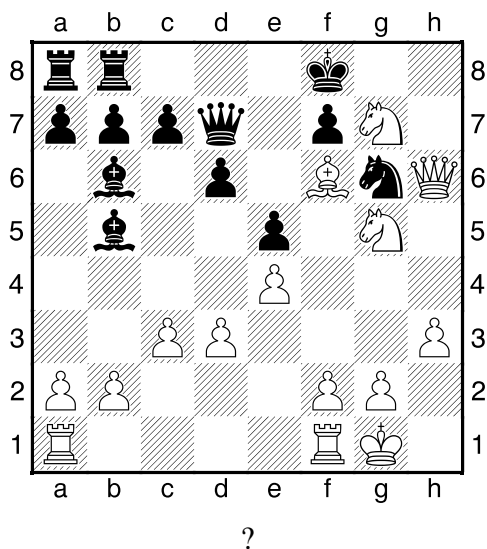


3. příklad Černý na tahu (pš x421)

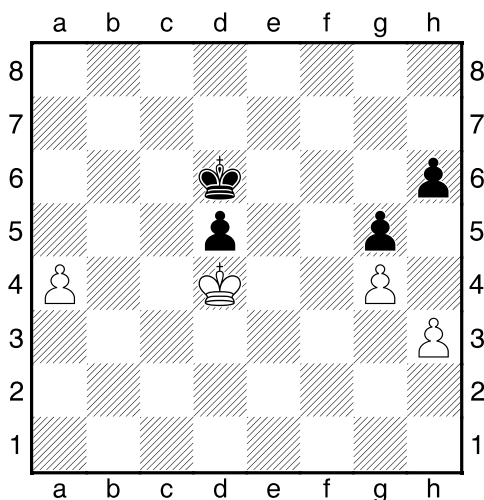


Černý zahrál 1...h6. Jak odpověděl bílý?

4. příklad Bílý na tahu (pš 1/220)

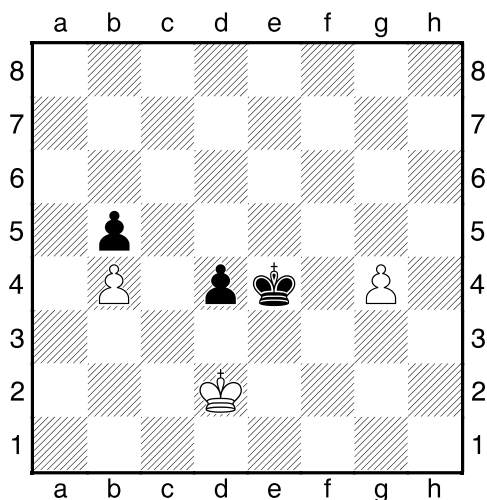


Bílý na tahu



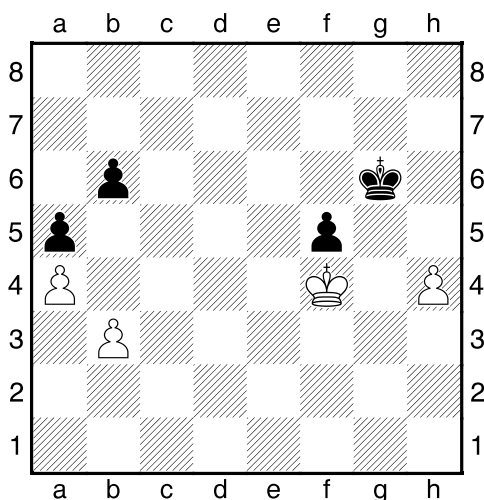
Co byste zahráli a jak partie dopadne?

Bílý na tahu



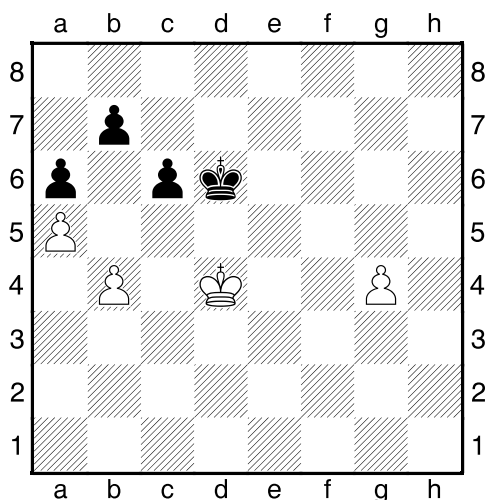
Co byste zahráli a jak partie dopadne?

Bílý na tahu



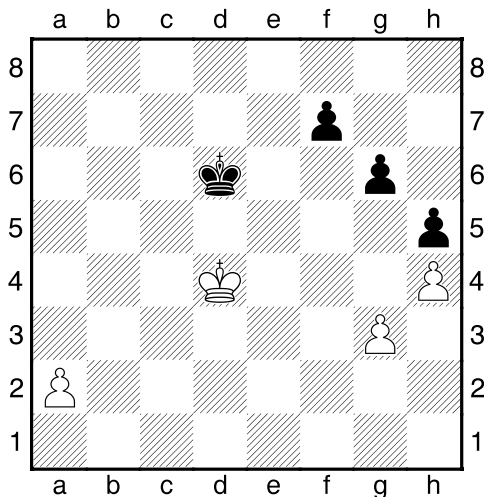
Co byste zahráli a jak partie dopadne?

Bílý na tahu



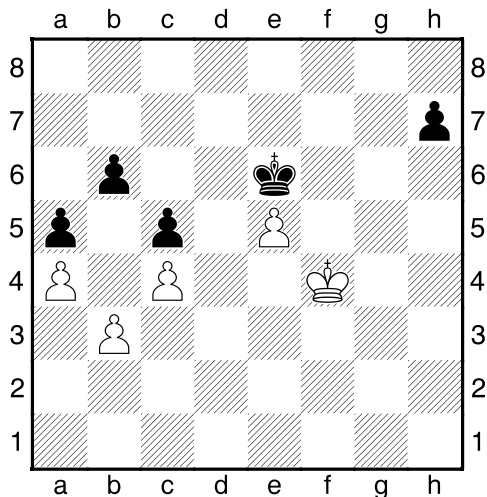
Co byste zahráli a jak partie dopadne?

Bílý na tahu



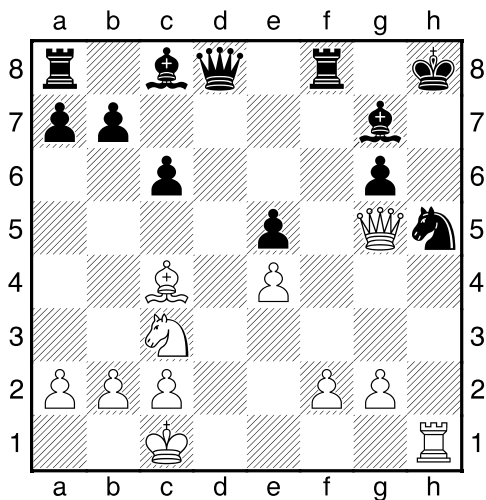
Co byste zahráli a jak partie dopadne?

Černý na tahu

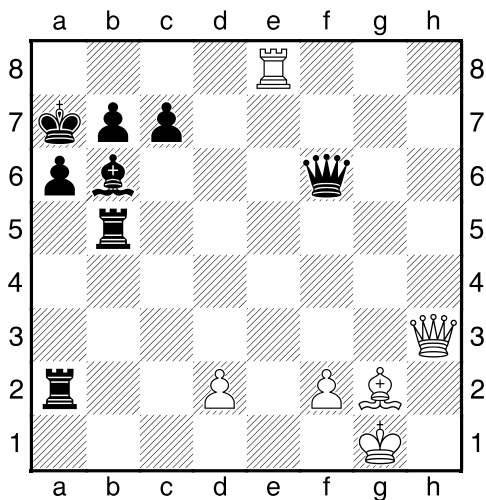


Co byste zahráli a jak partie dopadne?

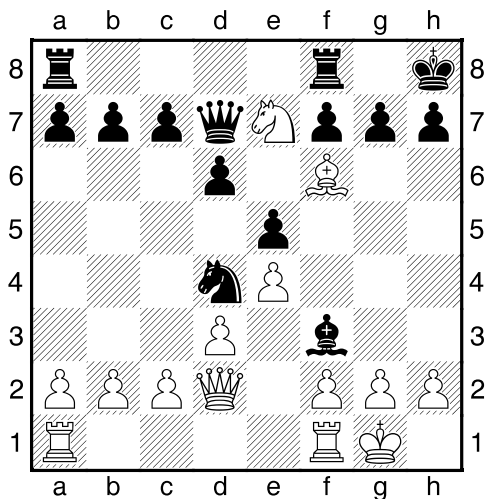
Bílý na tahu



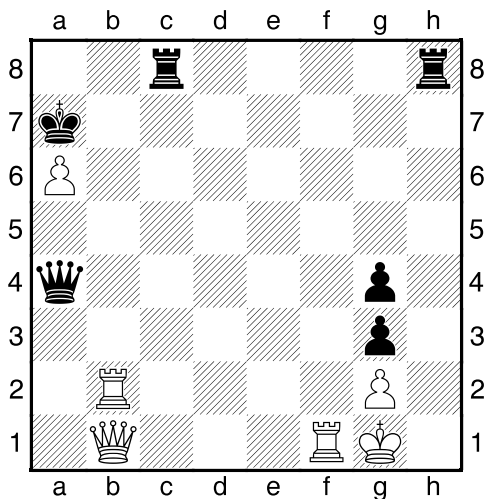
Bílý na tahu



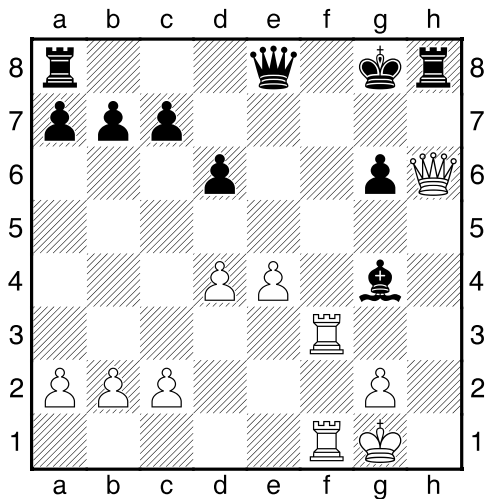
Bílý na tahu



Bílý na tahu



Bílý na tahu



Bílý na tahu

