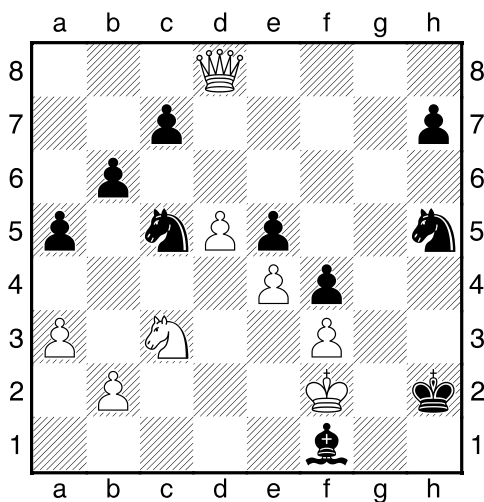
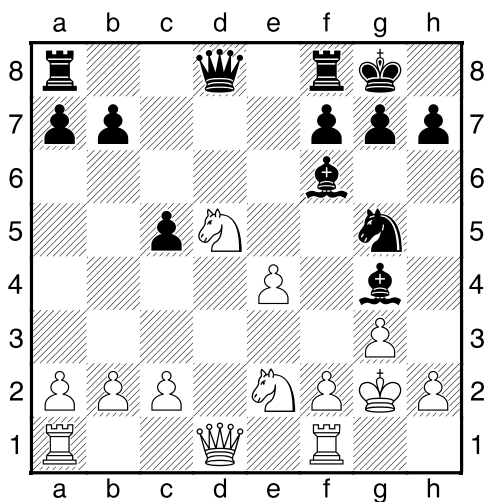


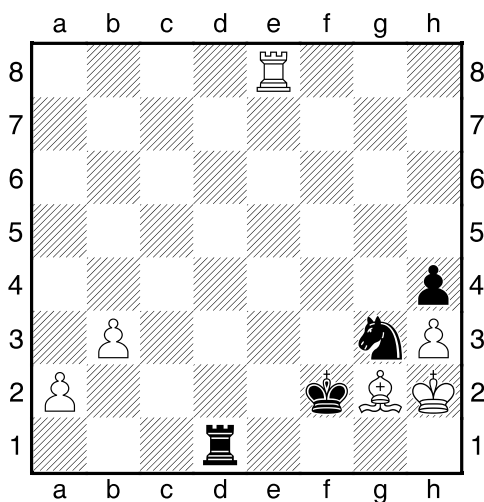
Černý na tahu



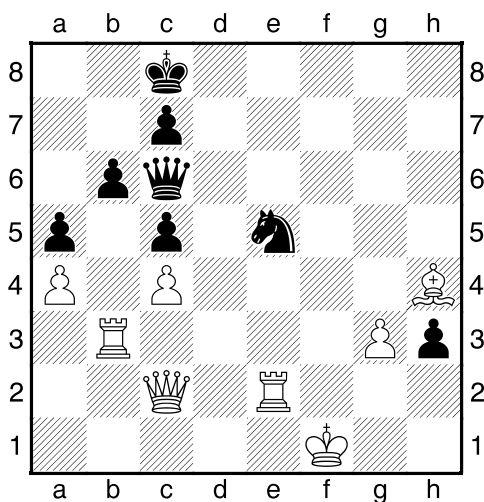
Černý na tahu



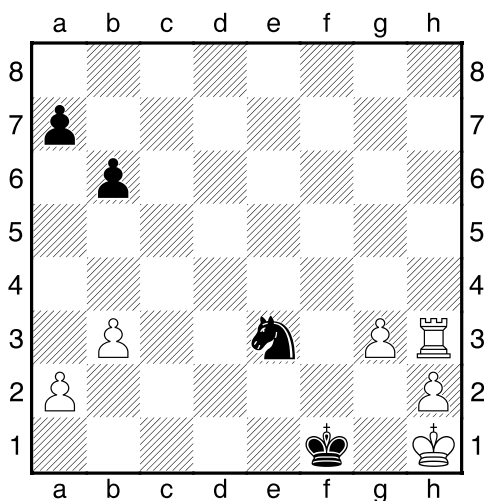
Černý na tahu



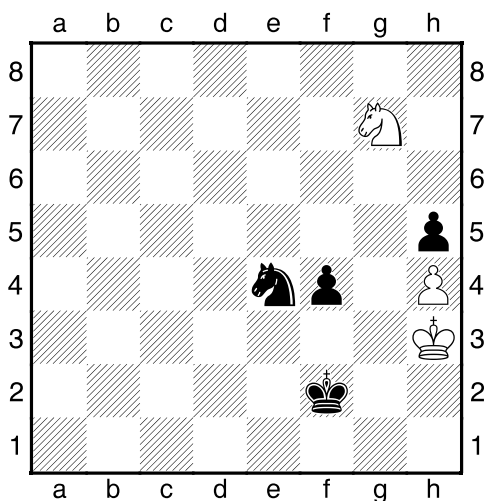
Černý na tahu



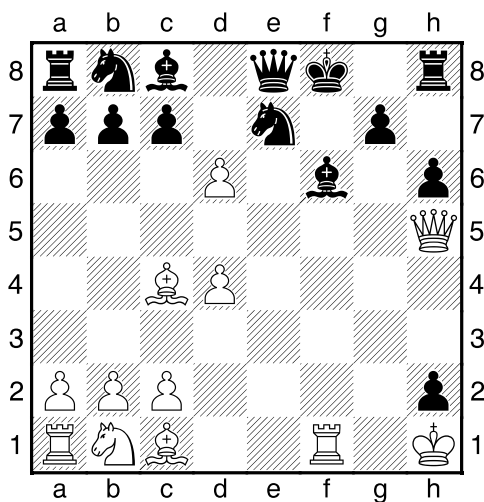
Černý na tahu



Černý na tahu

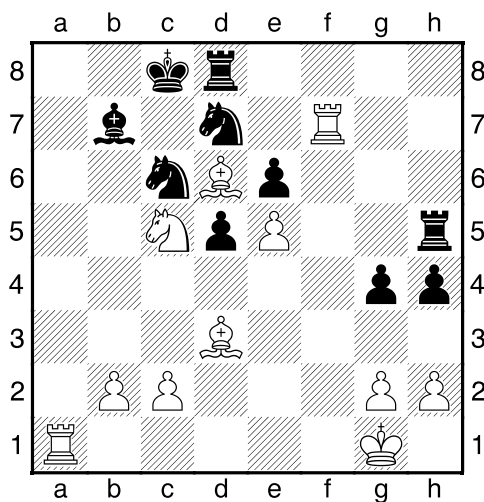


Bílý na tahu



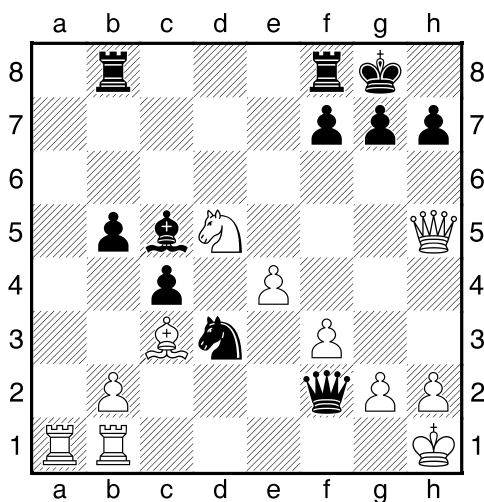
NÁPOVĚDA: 1.Vxf6+

Bílý na tahu



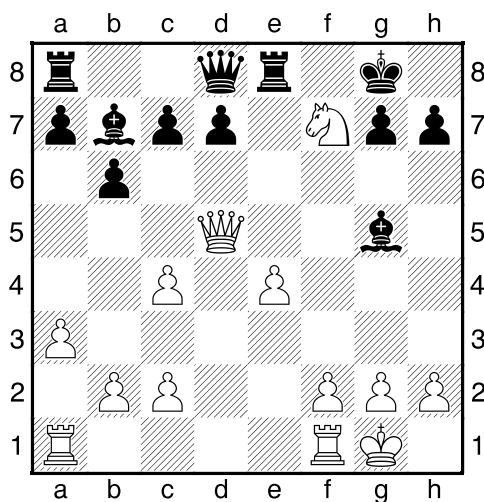
NÁPOVĚDA: 1.Va8+

Bílý na tahu



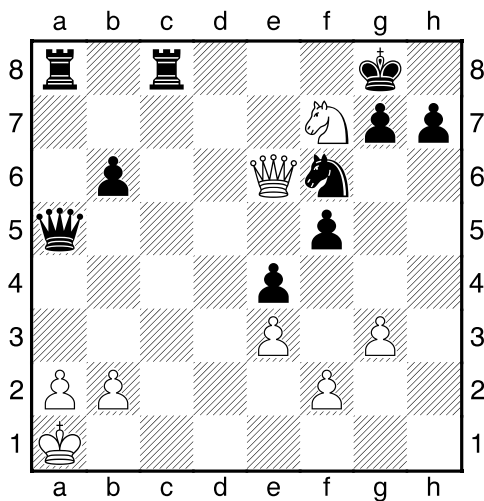
NÁPOVĚDA: 1.Jf6+

Bílý na tahu



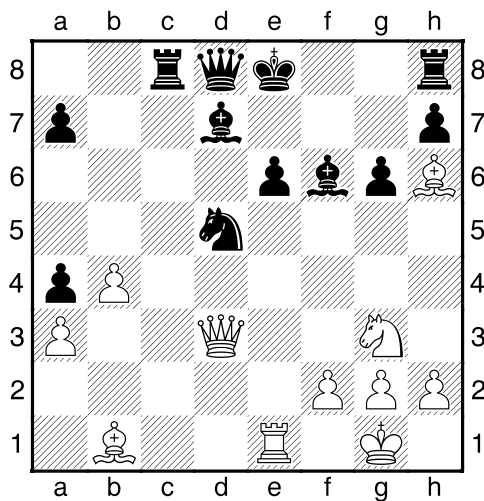
NÁPOVĚDA: 1.Jh6++

Bílý na tahu

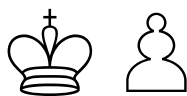


NÁPOVĚDA: 1.Jh6++

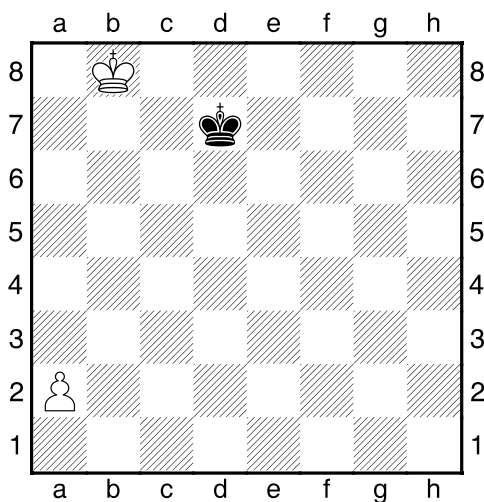
Bílý na tahu



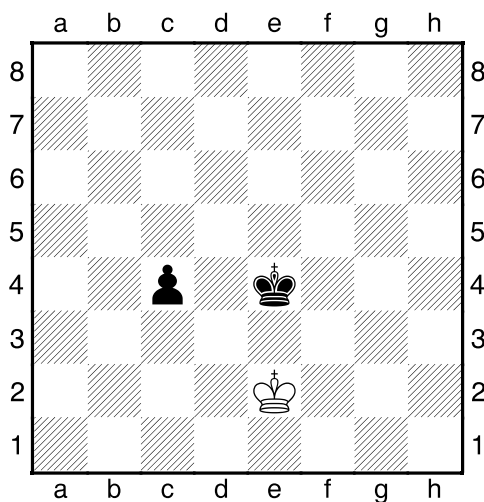
NÁPOVĚDA: 1.Dxg6+



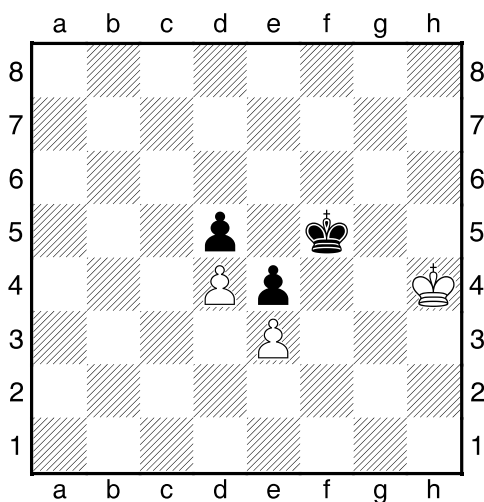
1. příklad Bílý na tahu



2. příklad Černý na tahu



3. příklad Černý na tahu



4. příklad Bílý na tahu

