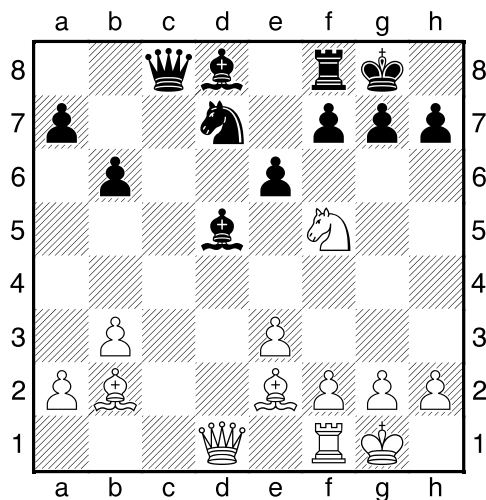
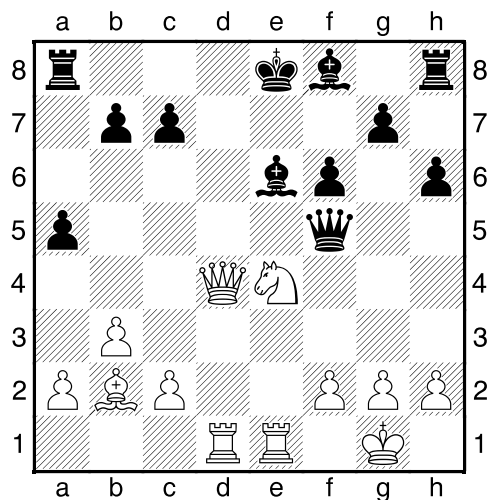


1. příklad Bílý na tahu (pš 1/215)



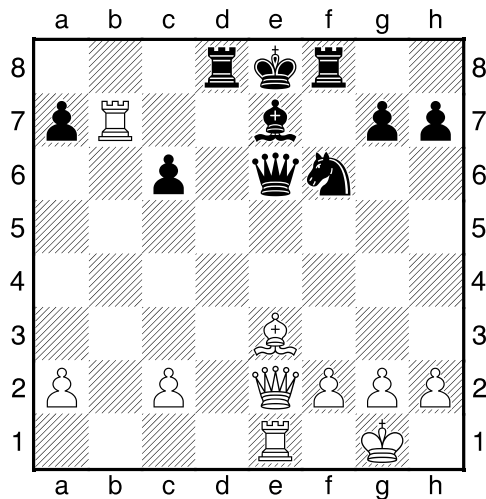
Jak dostat bílou dámu  
 co nejrychleji na královské křídlo?

2. příklad Bílý na tahu (pš 4/163)



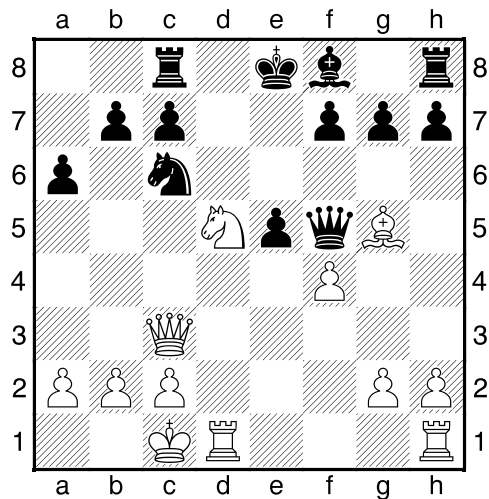
?

3. příklad Bílý na tahu (pš 3/145)



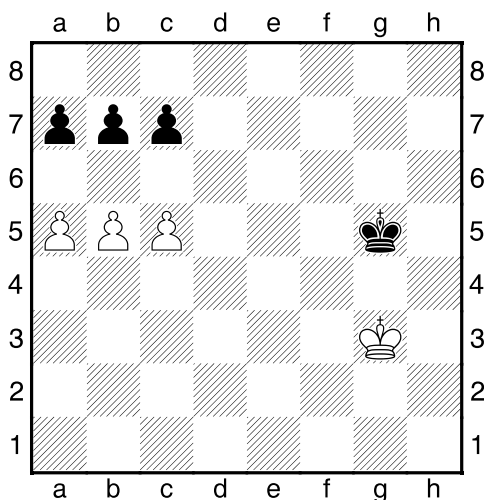
?

4. příklad Bílý na tahu (pš 3/144)



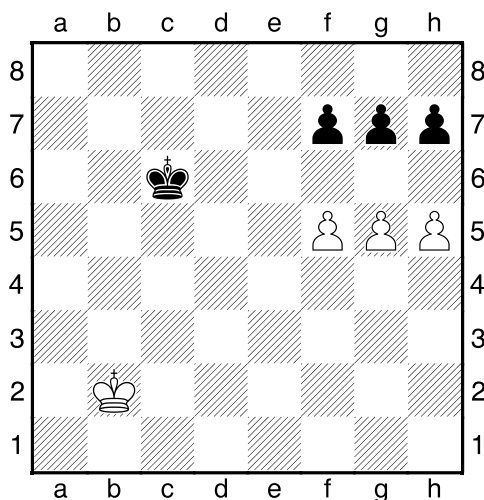
?

Bílý na tahu



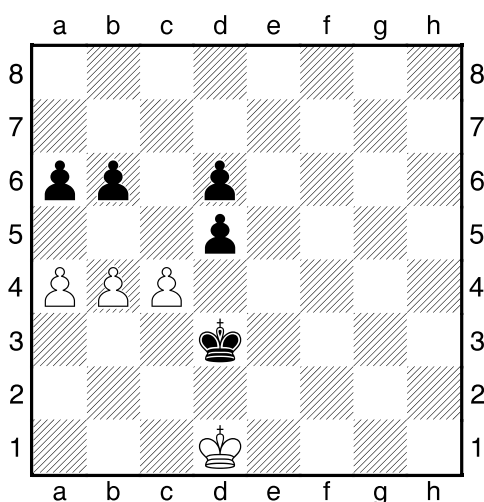
Co byste zahráli a jak partie dopadne?

Bílý na tahu



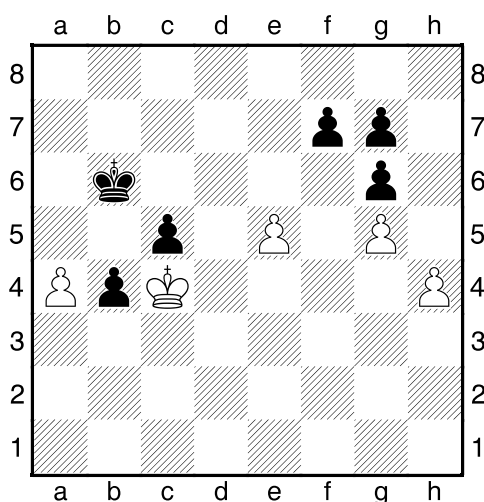
Co byste zahráli a jak partie dopadne?

Bílý na tahu



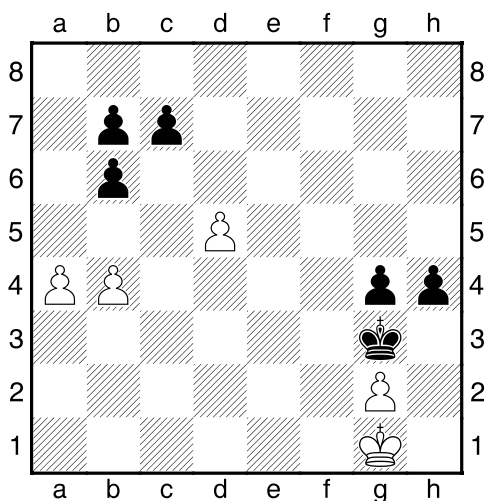
Co byste zahráli a jak partie dopadne?

Bílý na tahu



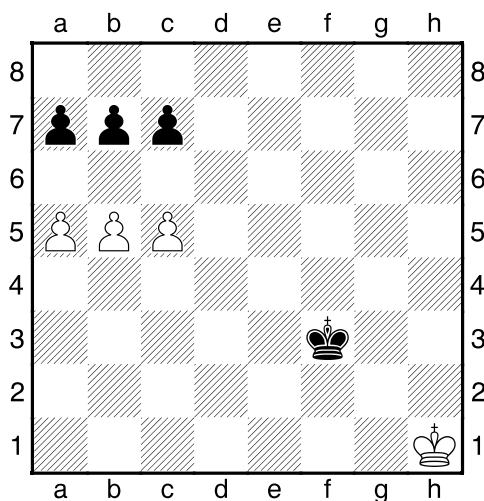
Co byste zahráli a jak partie dopadne?

Bílý na tahu



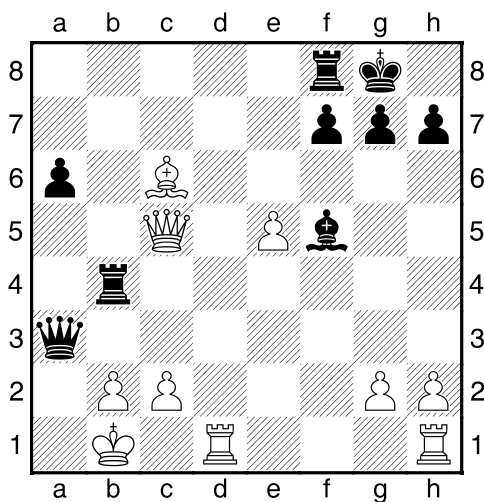
Co byste zahráli a jak partie dopadne?

Černý na tahu

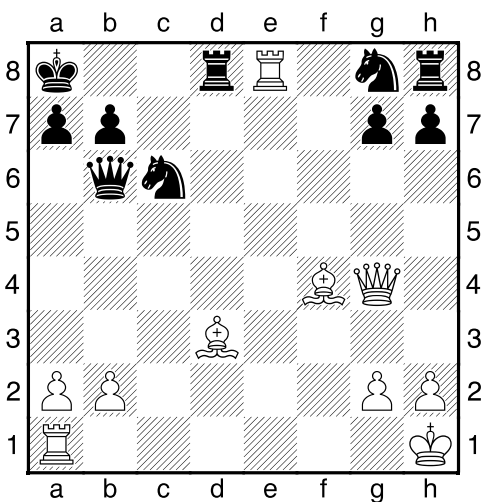


Co byste zahráli a jak partie dopadne?

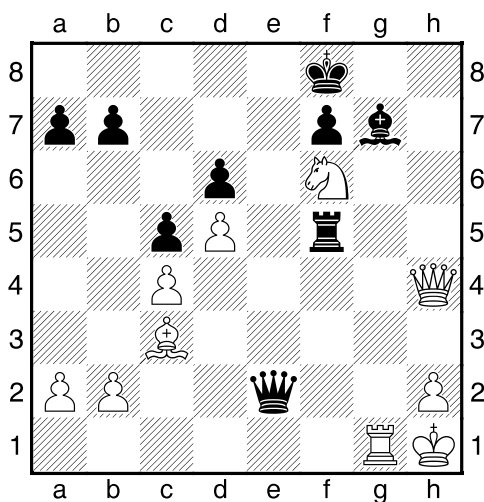
Bílý na tahu



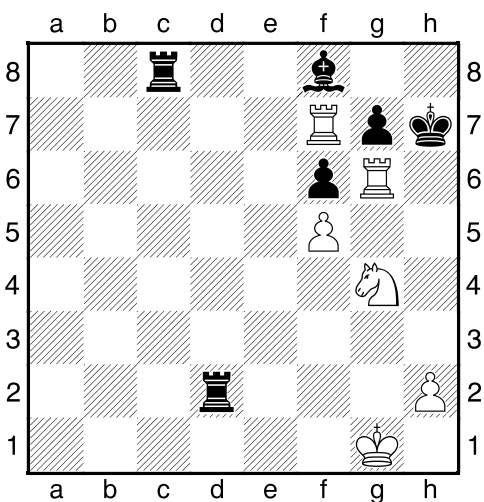
Bílý na tahu



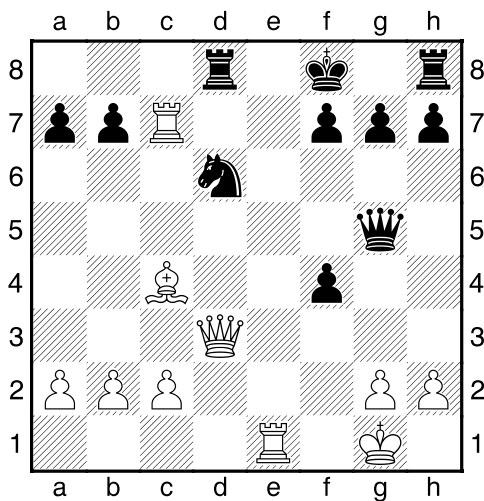
Bílý na tahu



Bílý na tahu



Bílý na tahu



Bílý na tahu

