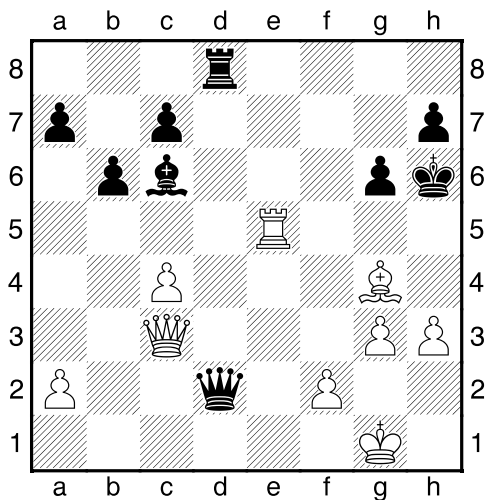
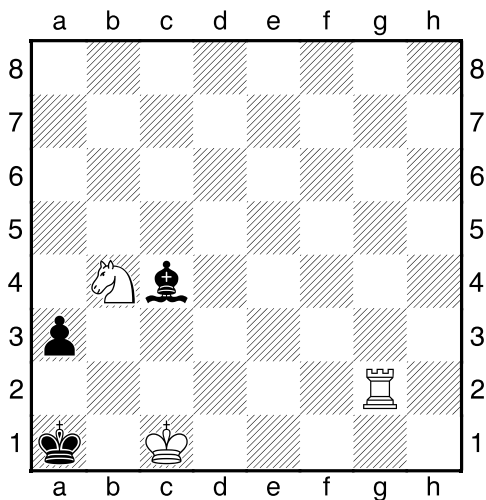


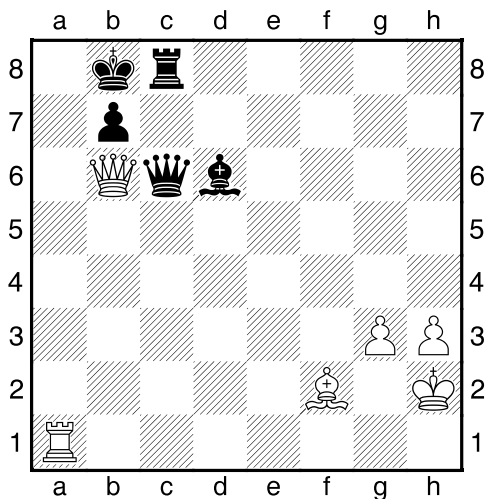
Bílý na tahu



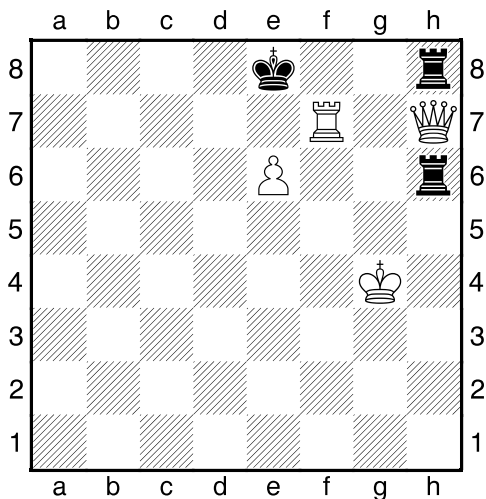
Bílý na tahu



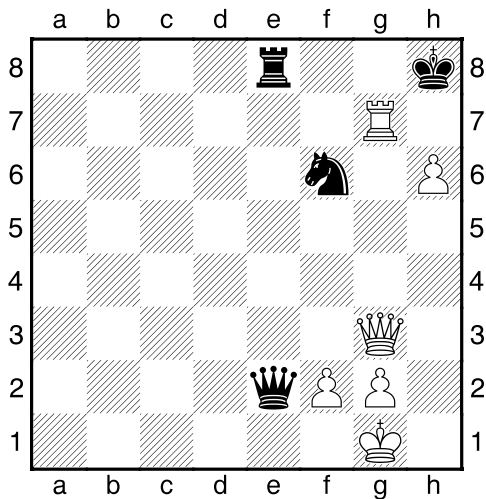
Bílý na tahu



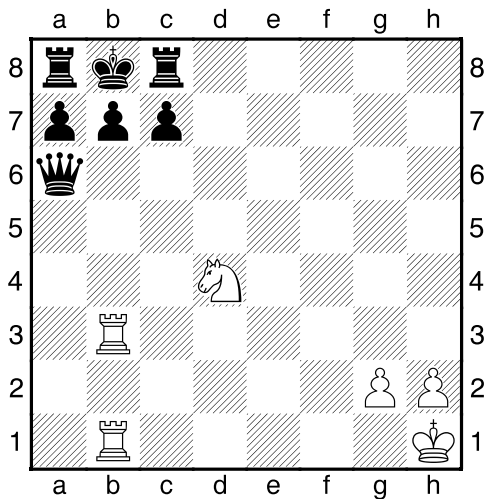
Bílý na tahu



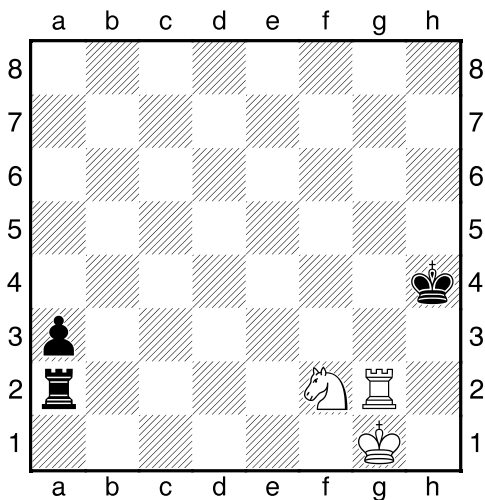
Bílý na tahu



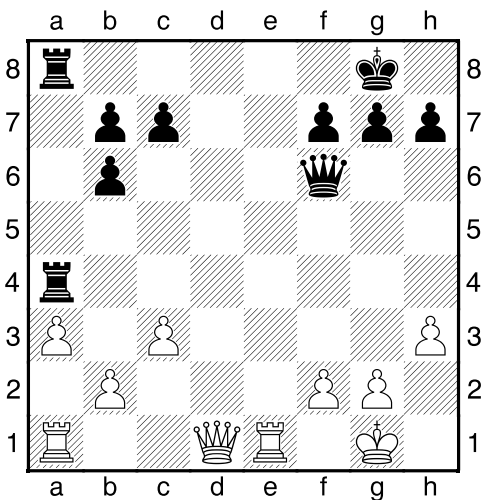
Bílý na tahu



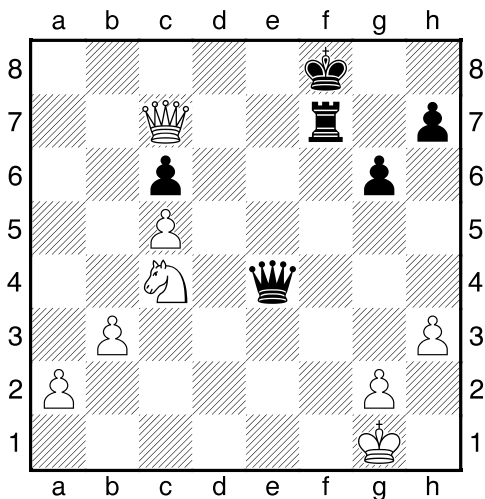
Bílý na tahu



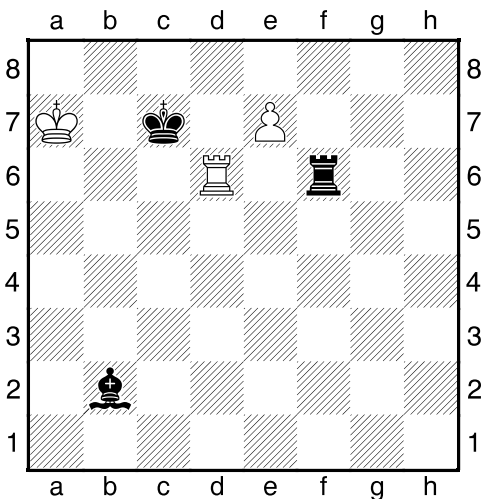
Bílý na tahu



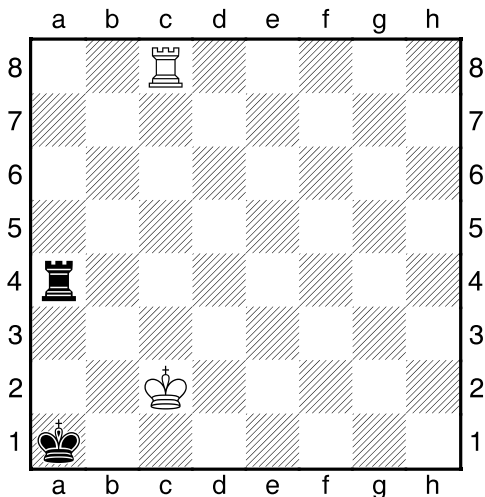
Bílý na tahu



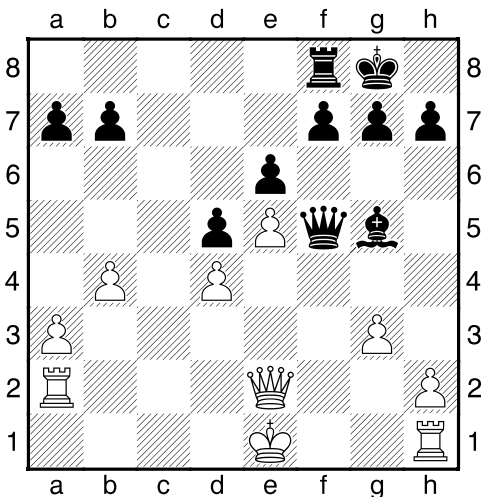
Bílý na tahu



Bílý na tahu



Černý na tahu

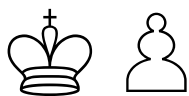


My-Chess 06 (Střední), 10.10.2022

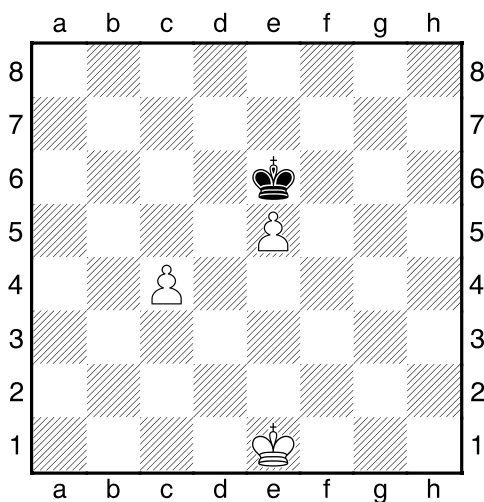
Boj o kritická pole a-h

(Biolek 007,4x)

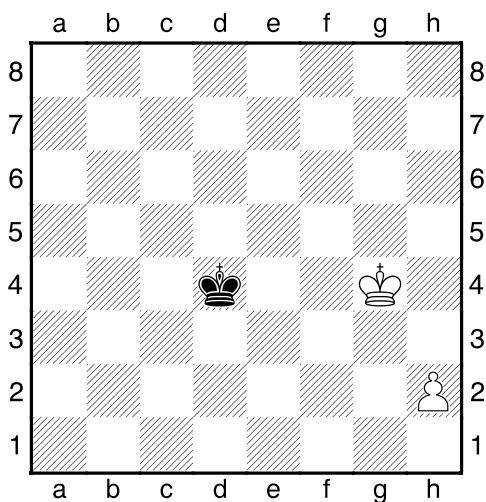
!!! Pod každý diagram napište první tah a jak partie dopadne !!!
(navíc můžete v diagramech označit KP)
strana 3/3



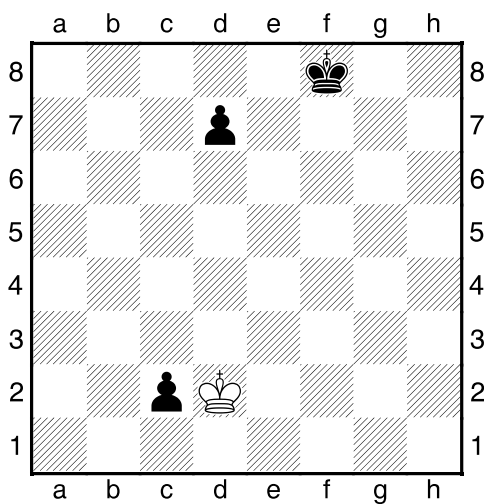
1. příklad Bílý na tahu



2. příklad Černý na tahu



3. příklad Bílý na tahu



4. příklad Černý na tahu

