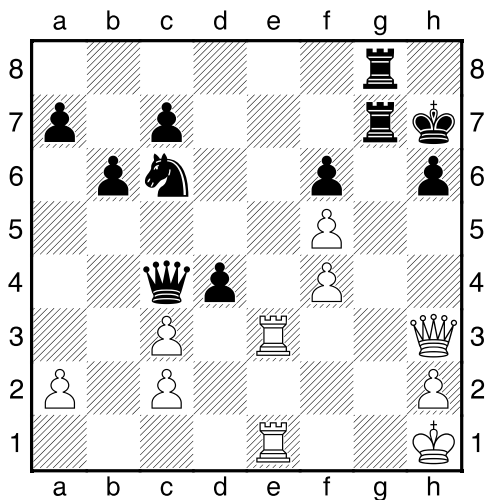
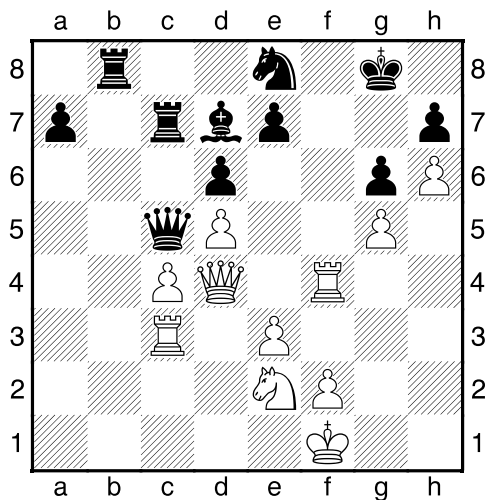


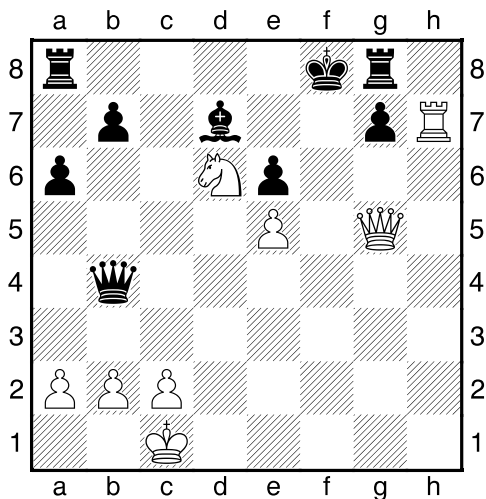
Bílý na tahu



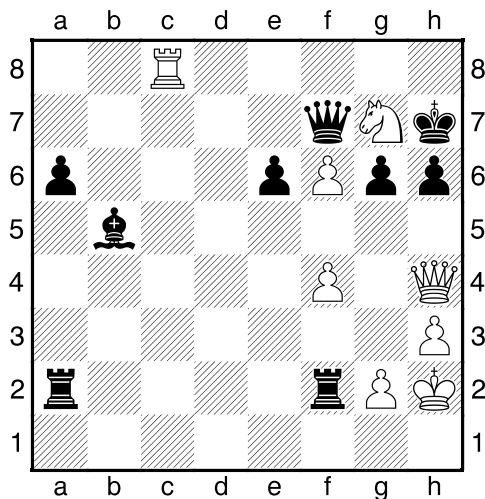
Bílý na tahu



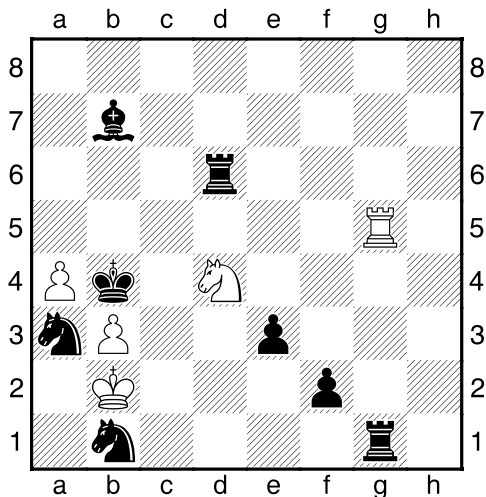
Bílý na tahu



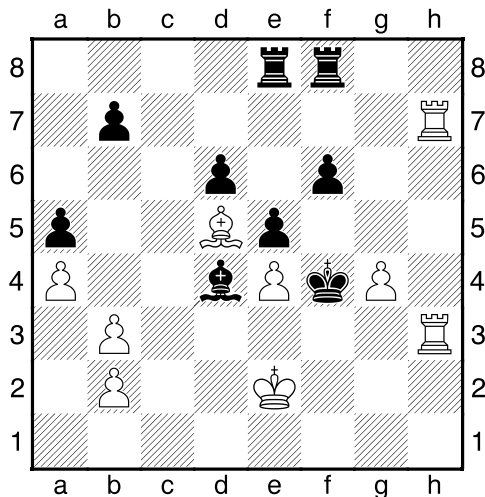
Bílý na tahu



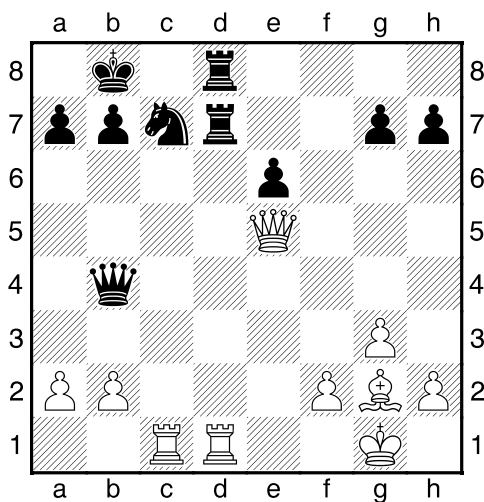
Bílý na tahu



Bílý na tahu

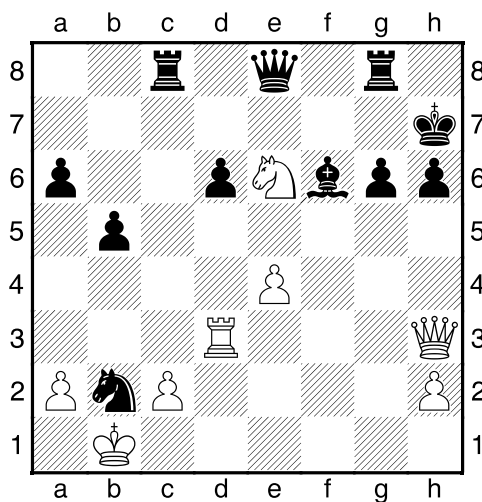


Bílý na tahu



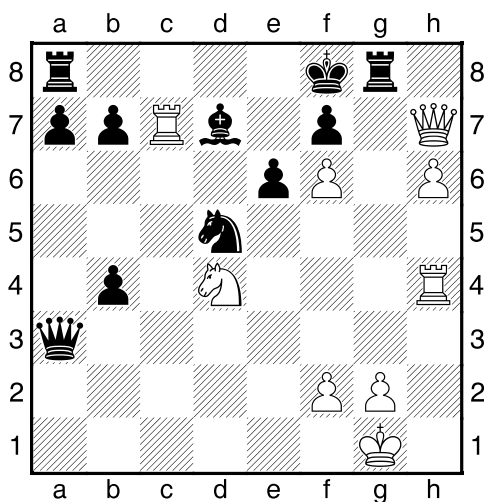
NÁPOVĚDA: 1.Dxc7+

Bílý na tahu



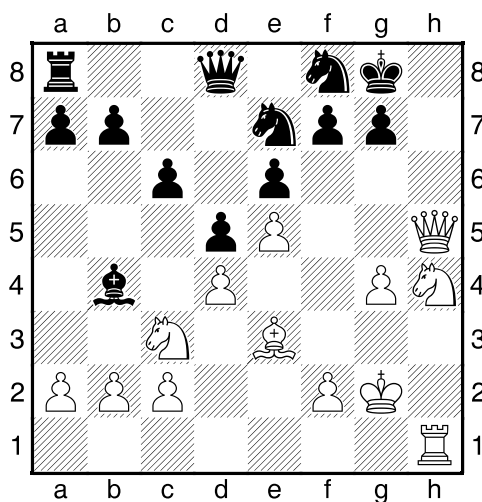
NÁPOVĚDA: 1.Dxh6+

Bílý na tahu



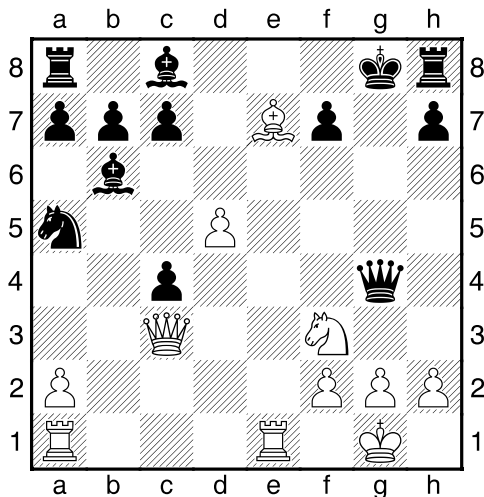
NÁPOVĚDA: 1.Dg7+

Bílý na tahu



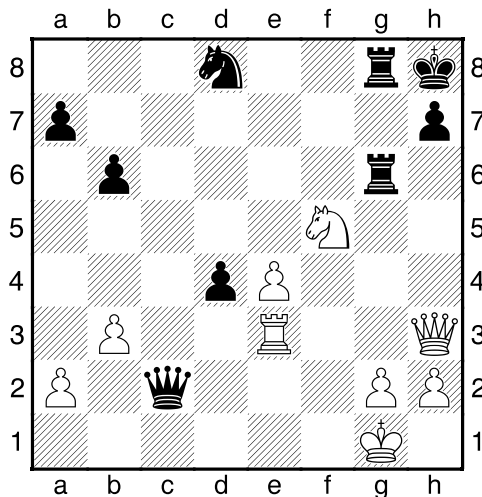
NÁPOVĚDA: 1.Dh8+

Bílý na tahu

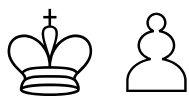


NÁPOVĚDA: 1.Dxh8+

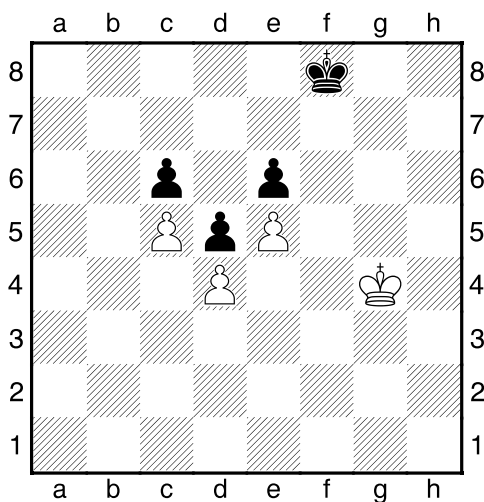
Bílý na tahu



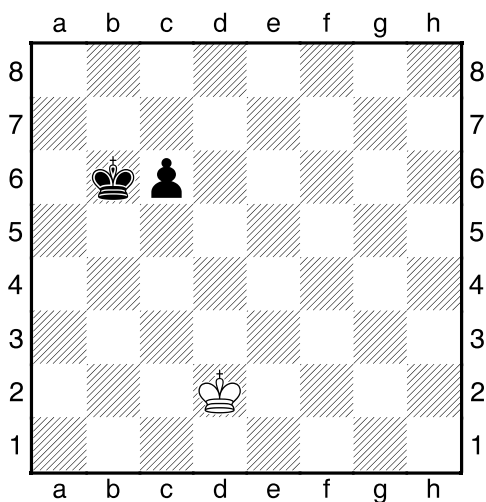
NÁPOVĚDA: 1.Dxh7+



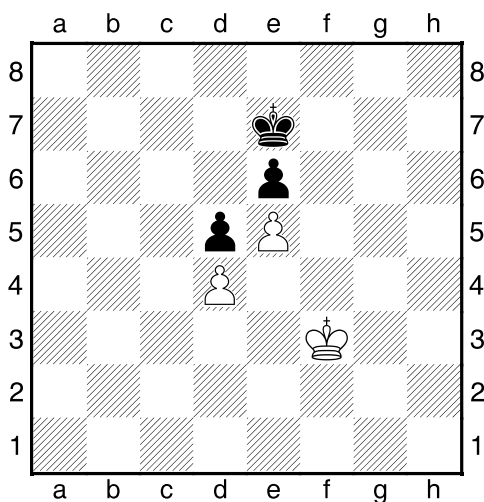
1. příklad Černý na tahu



2. příklad Černý na tahu



3. příklad Bílý na tahu



4. příklad Bílý na tahu

