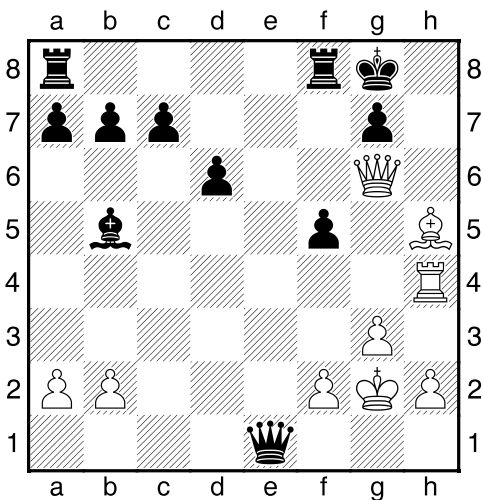
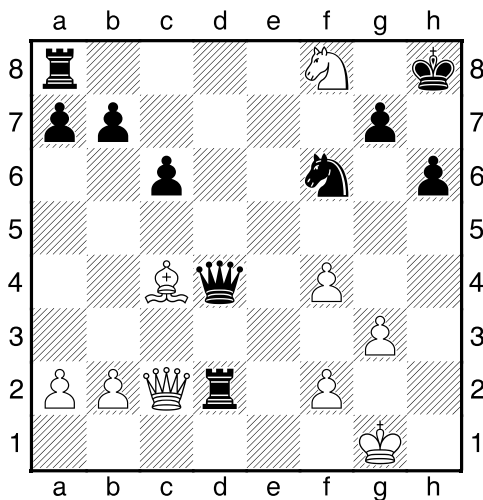


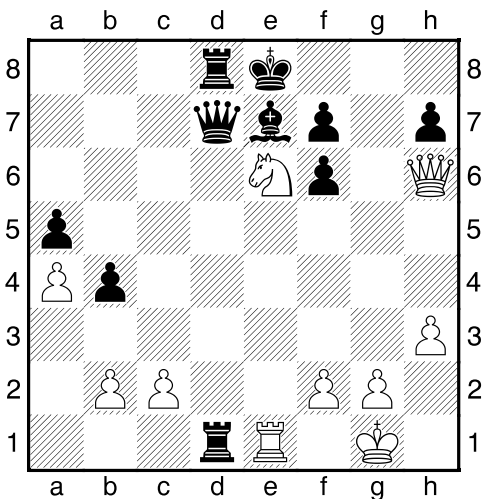
Bílý na tahu



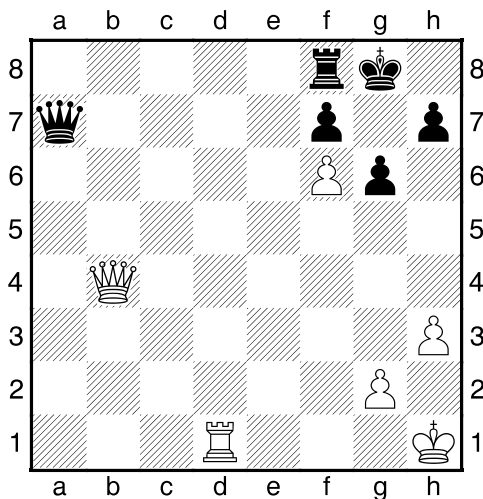
Bílý na tahu



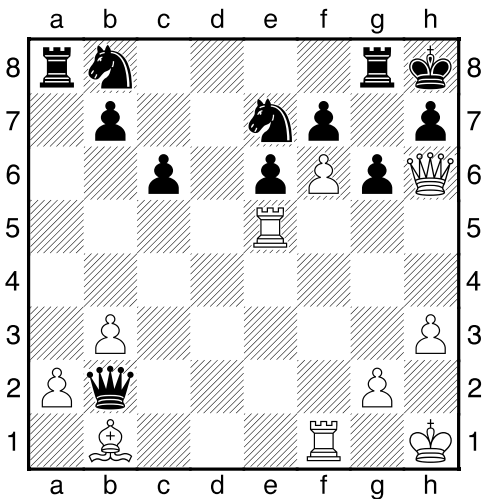
Bílý na tahu



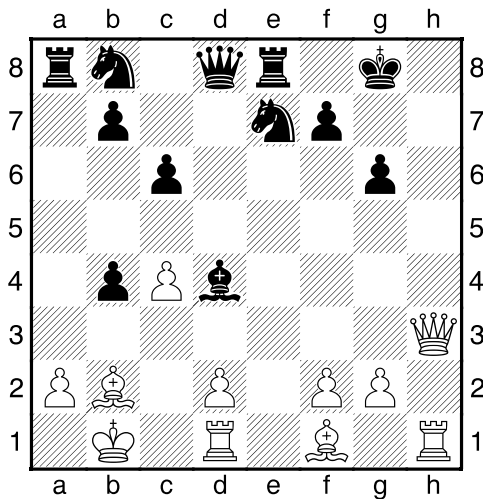
Bílý na tahu



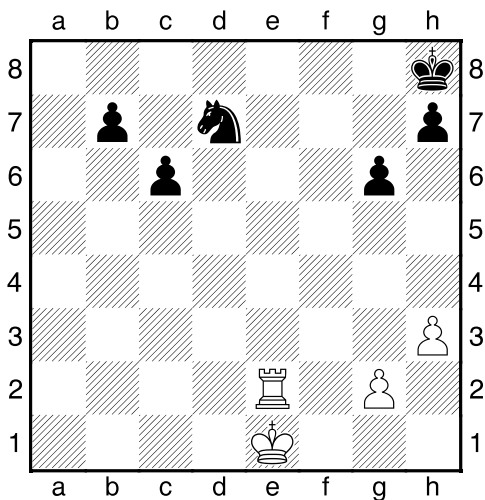
Bílý na tahu



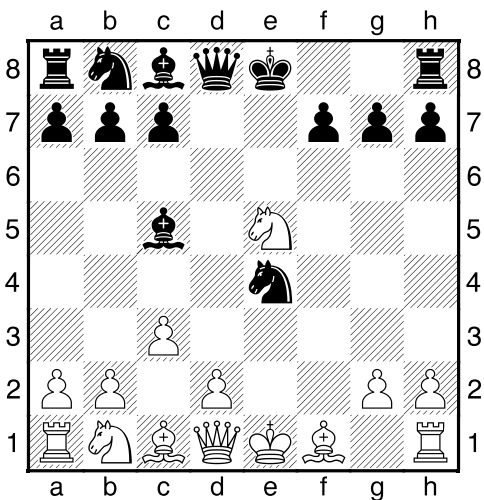
Bílý na tahu



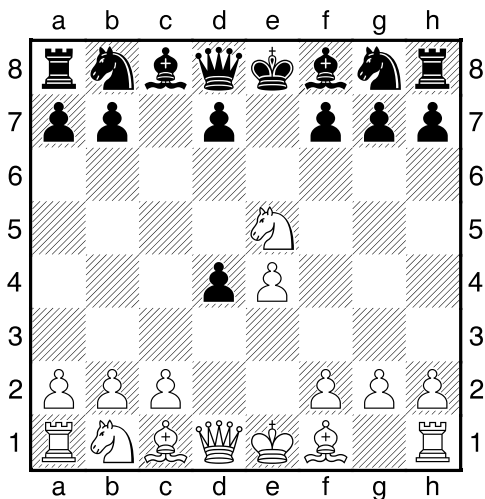
Bílý na tahu



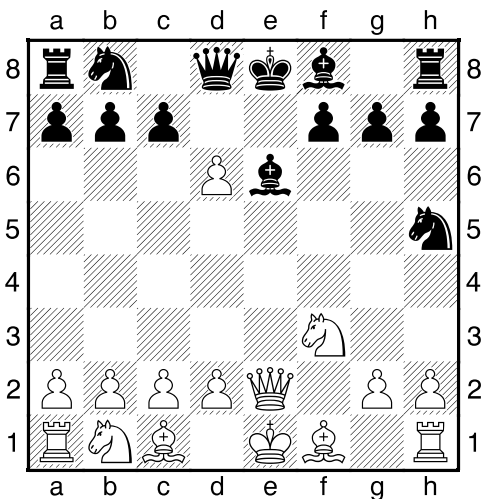
Bílý na tahu



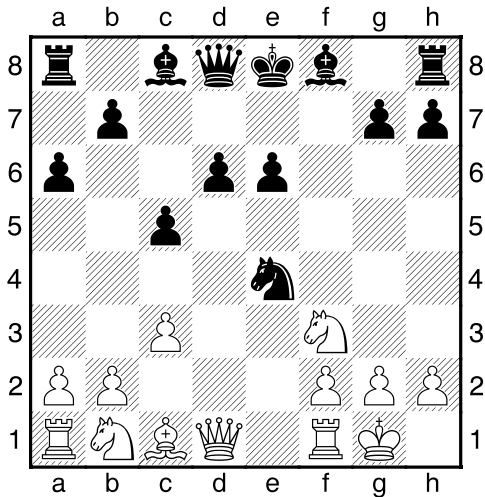
Černý na tahu



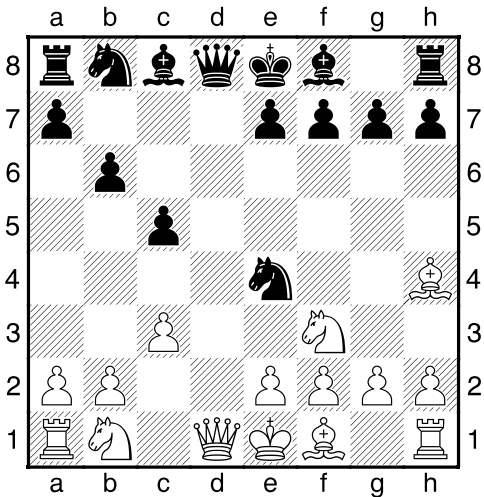
Bílý na tahu



Bílý na tahu



Bílý na tahu

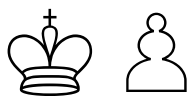


My-Chess 03 (Střední), 18.09.2023

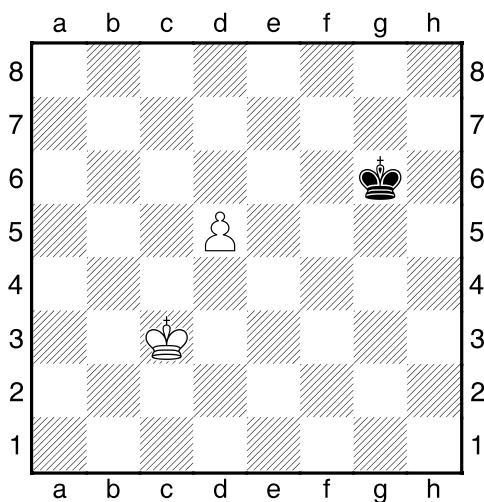
Boj o kritická pole b-g

(ŠK Biolek 007,3)

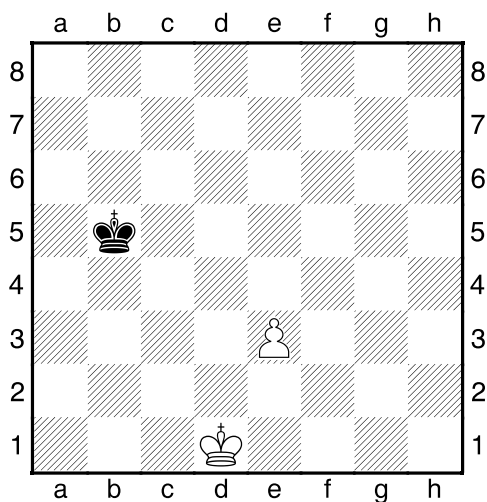
**!!! Pod každý diagram napište
první tah a jak partie dopadne !!!**
(navíc můžete v diagramech označit KP)
strana 3/3



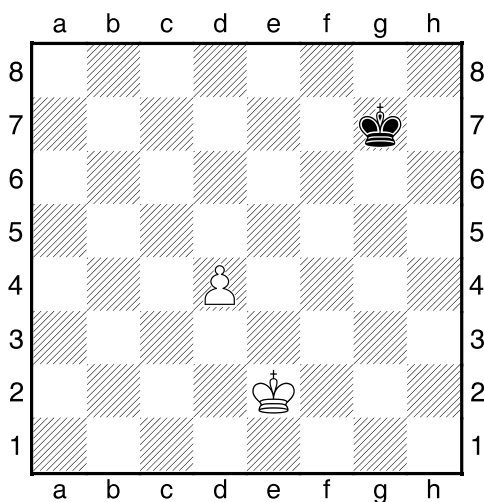
1. příklad Bílý na tahu



2. příklad Bílý na tahu



3. příklad Černý na tahu



4. příklad Černý na tahu

