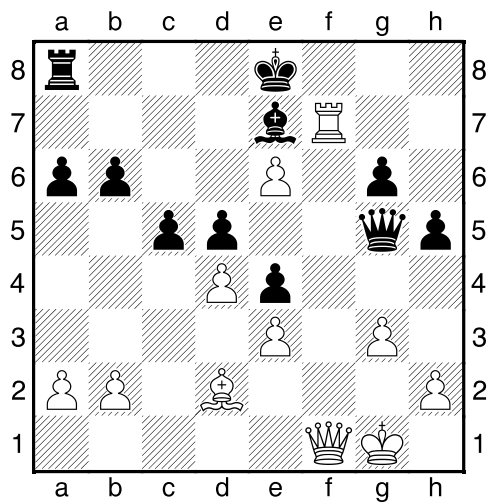
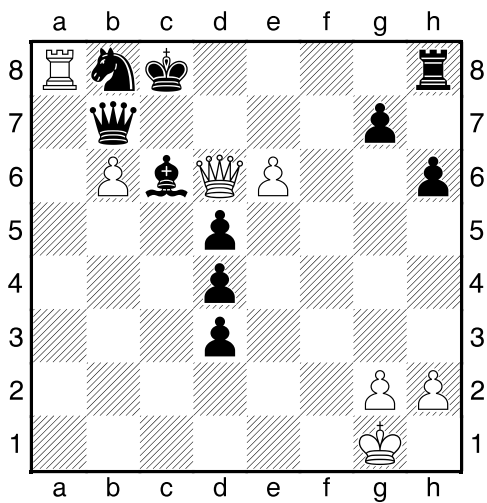


1. příklad Bílý na tahu (pš 3/57)



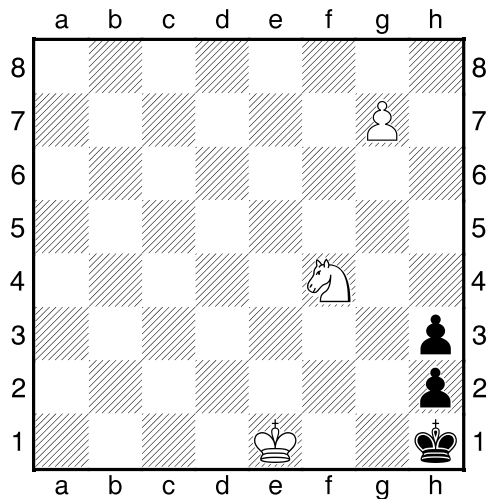
?

2. příklad Černý na tahu (pš x056)



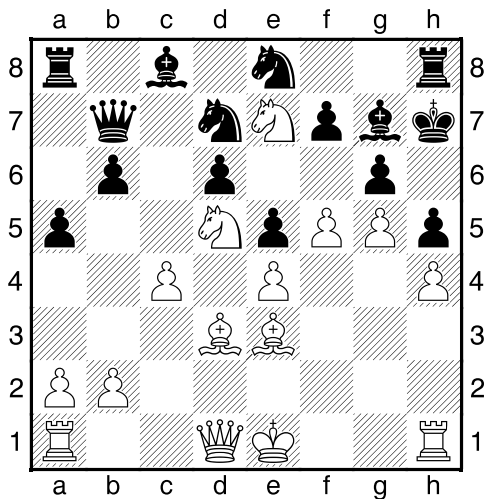
Černý zahrál 1...d2. Jak odpověděl bílý?

3. příklad Bílý na tahu (pš x337)



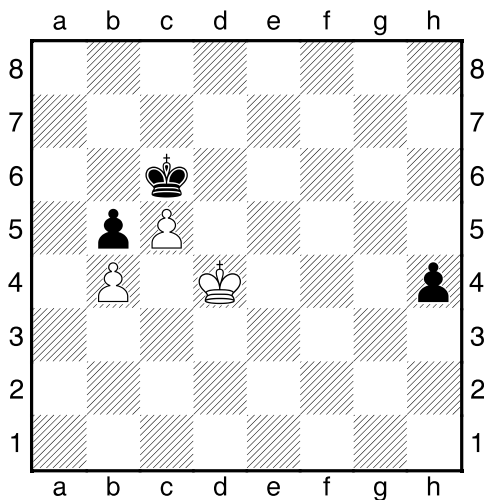
Mat 3. tahem.

4. příklad Bílý na tahu (pš x332)



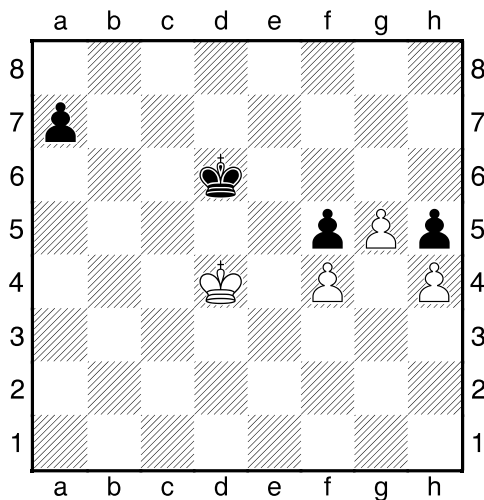
?

Bílý na tahu



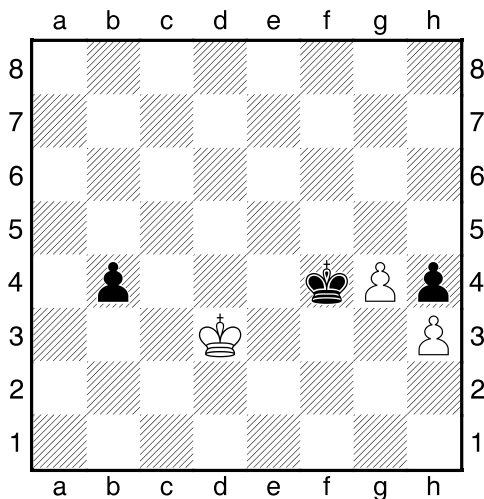
Co byste zahráli a jak partie dopadne?

Bílý na tahu



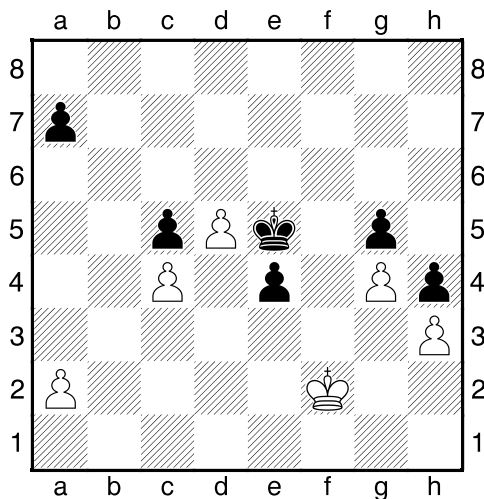
Co byste zahráli a jak partie dopadne?

Bílý na tahu



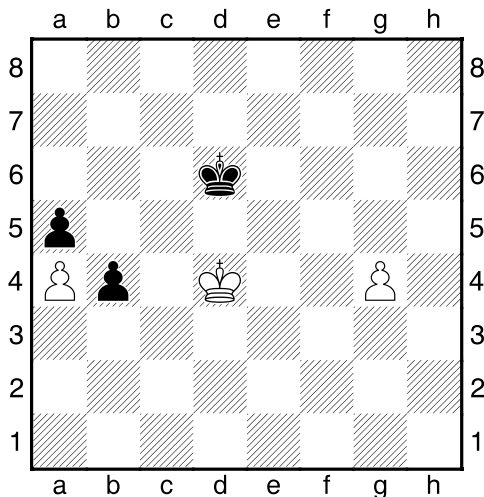
Co byste zahráli a jak partie dopadne?

Bílý na tahu



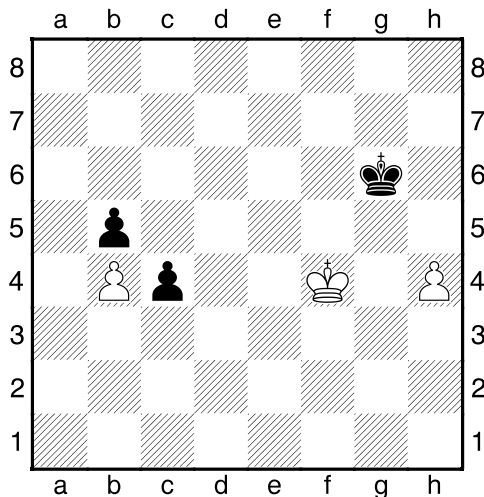
Co byste zahráli a jak partie dopadne?

Bílý na tahu



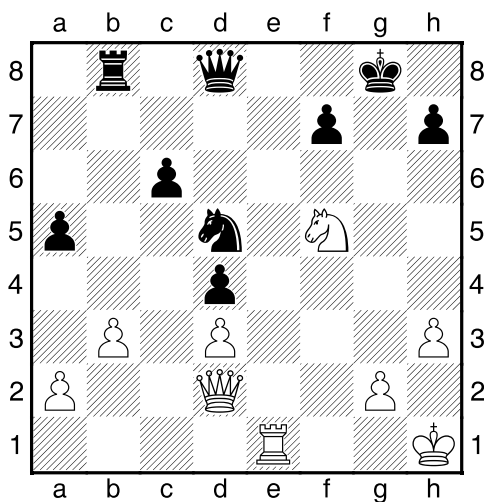
Co byste zahráli a jak partie dopadne?

Černý na tahu

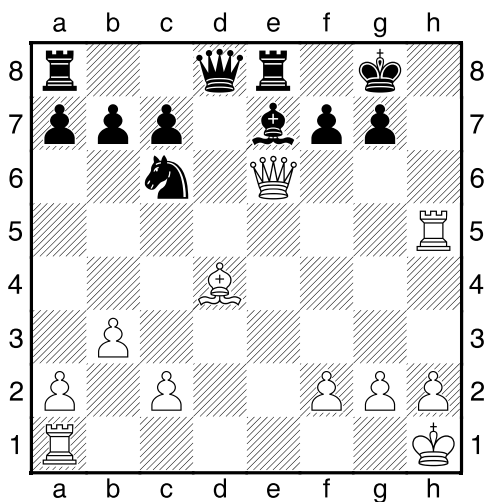


Co byste zahráli a jak partie dopadne?

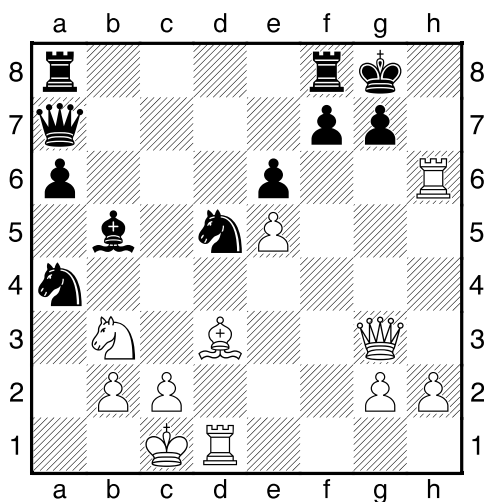
Bílý na tahu



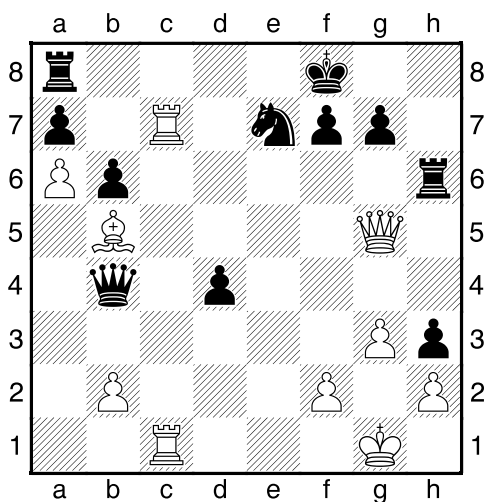
Bílý na tahu



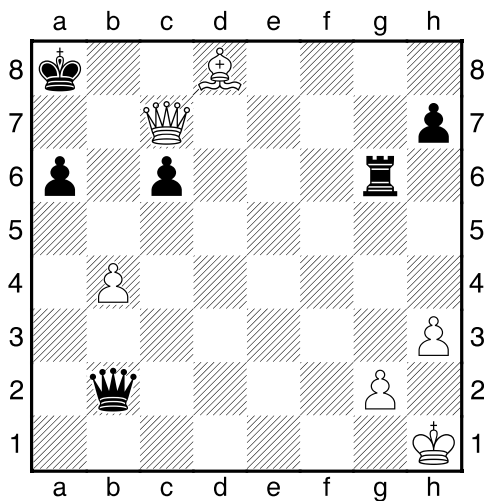
Bílý na tahu



Bílý na tahu



Bílý na tahu



Bílý na tahu

