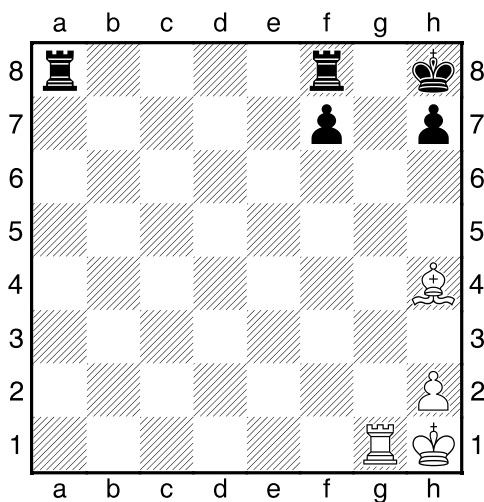
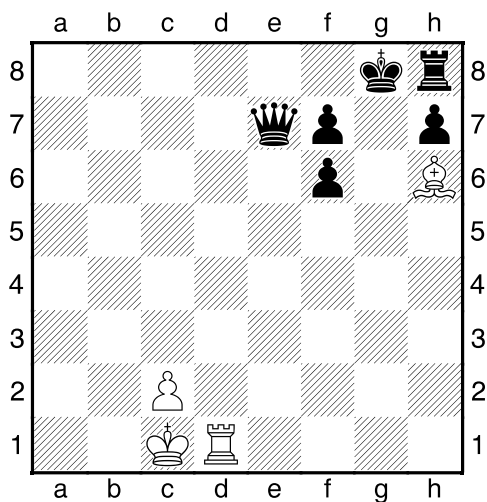


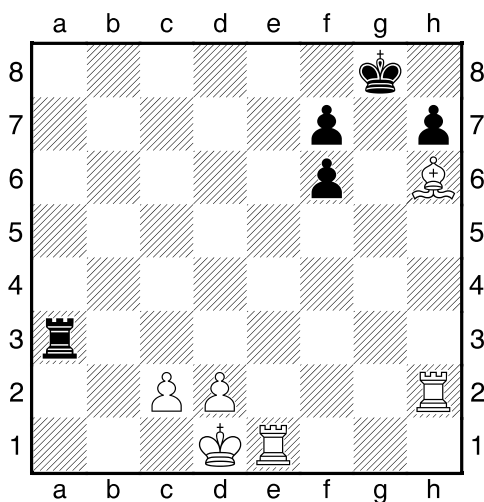
Bílý na tahu (LP,0211)



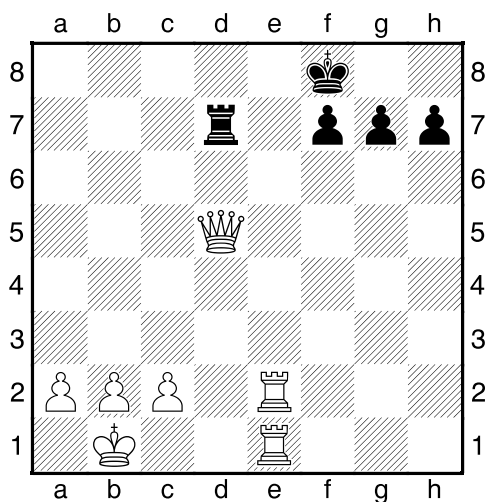
Bílý na tahu (LP,0212)



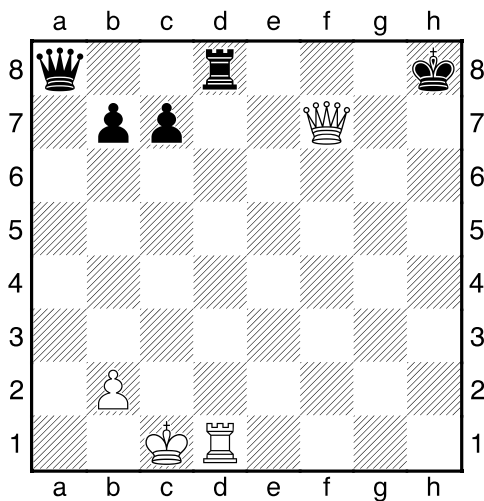
Bílý na tahu (LP,0213)



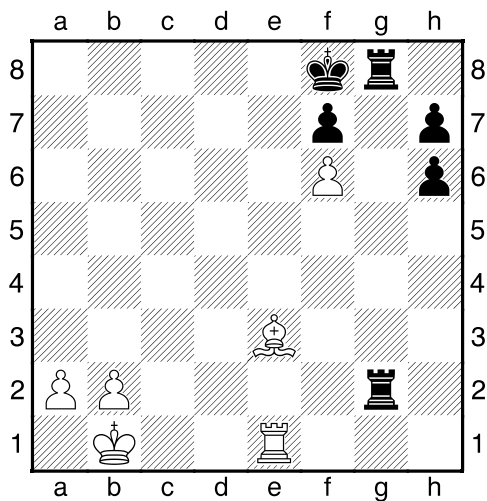
Bílý na tahu (LP,0214)



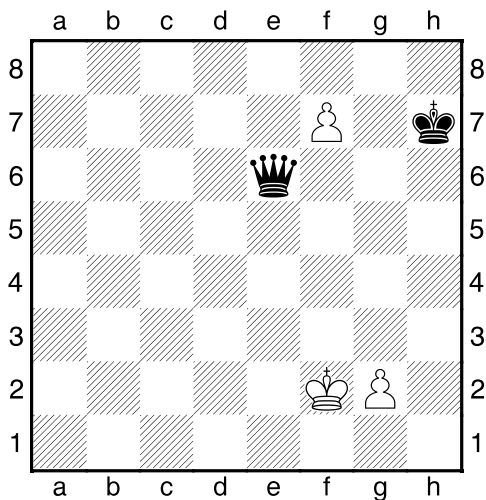
Bílý na tahu (LP,0215)



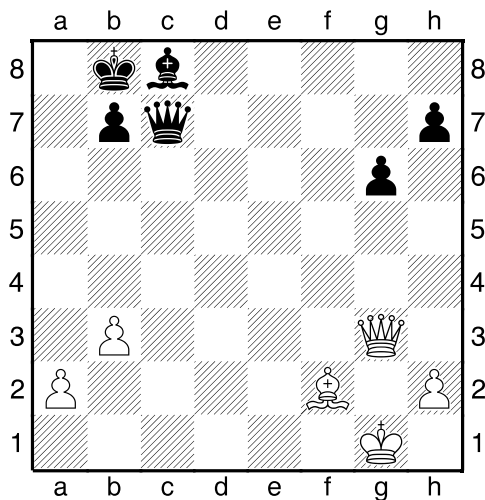
Bílý na tahu (LP,0216)



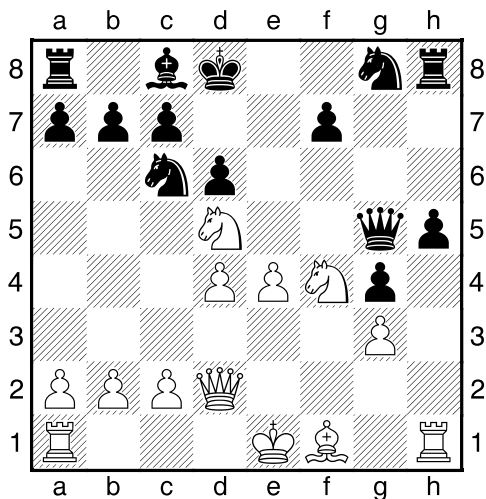
Bílý na tahu



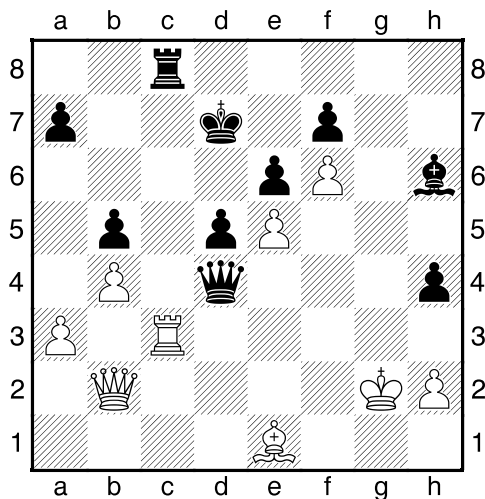
Bílý na tahu



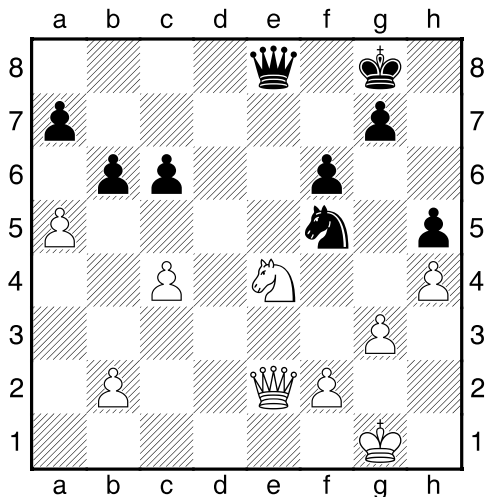
Bílý na tahu



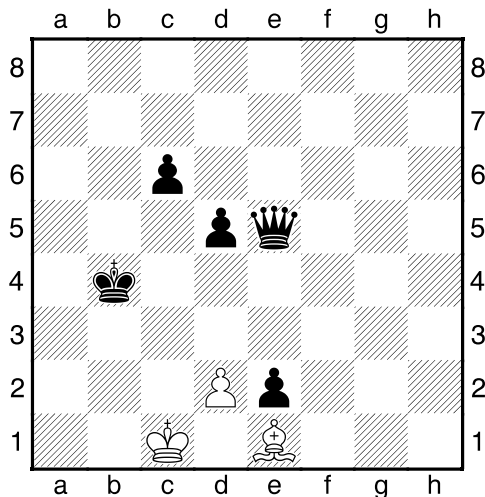
Bílý na tahu



Bílý na tahu



Bílý na tahu

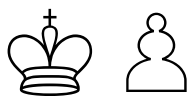


My-Chess 29 (Lehké), 01.04.2024

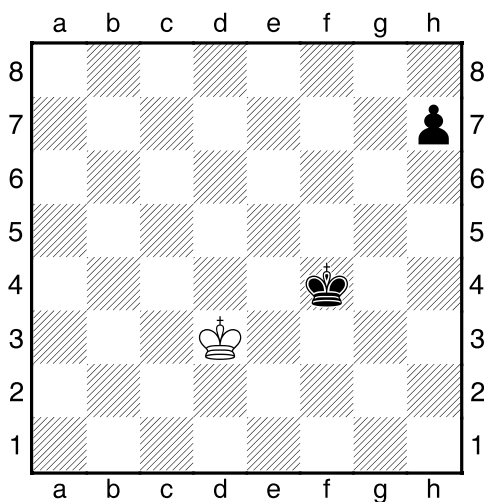
Boj o kritická pole a-h

(Biolek 007,4x)

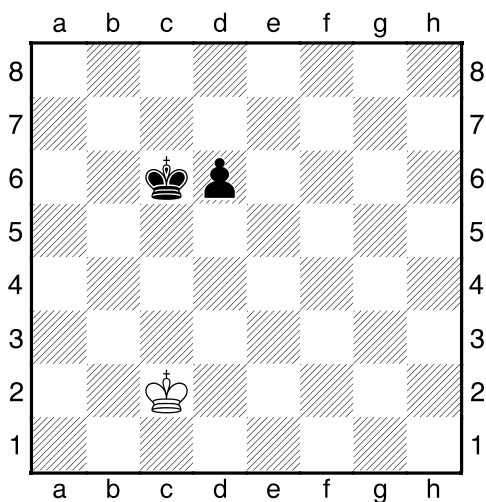
!!! Pod každý diagram napište první tah a jak partie dopadne !!!
(navíc můžete v diagramech označit KP)
strana 3/3



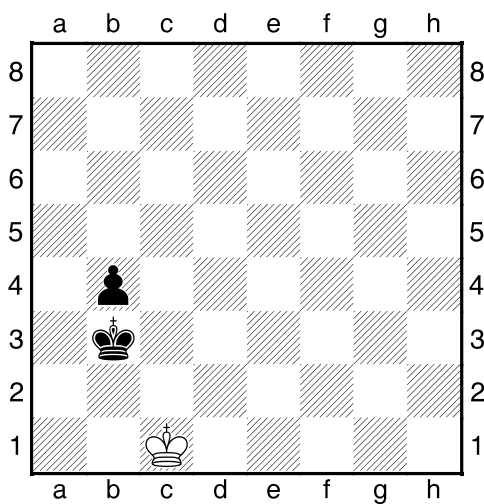
1. příklad Černý na tahu



2. příklad Bílý na tahu



3. příklad Bílý na tahu



4. příklad Černý na tahu

