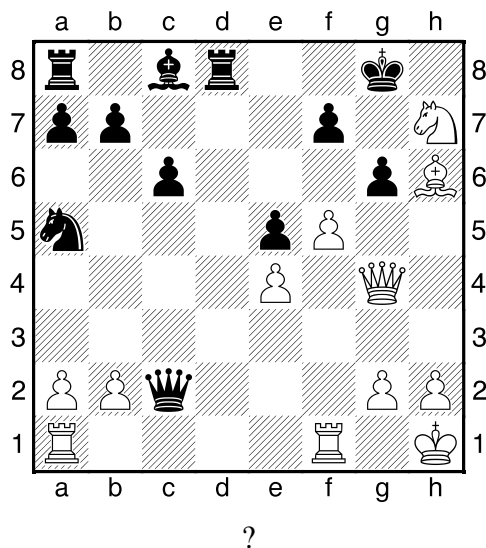
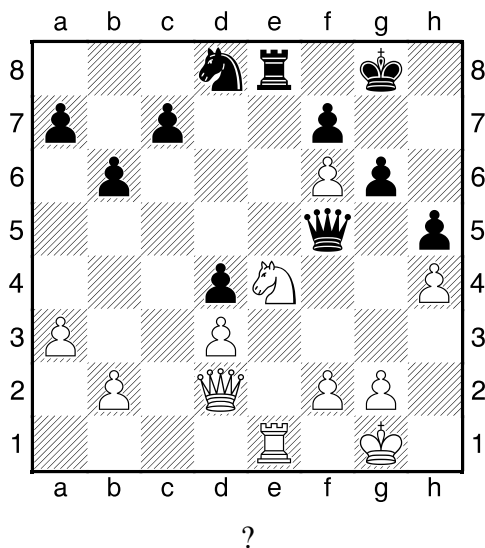


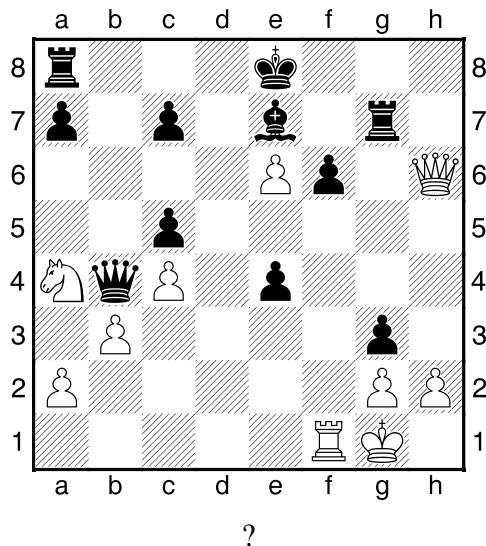
1. příklad Bílý na tahu (pš 5/228)



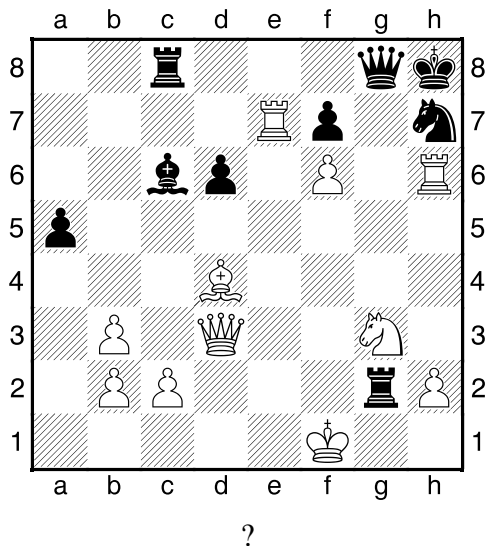
2. příklad Bílý na tahu (pš 2/51)



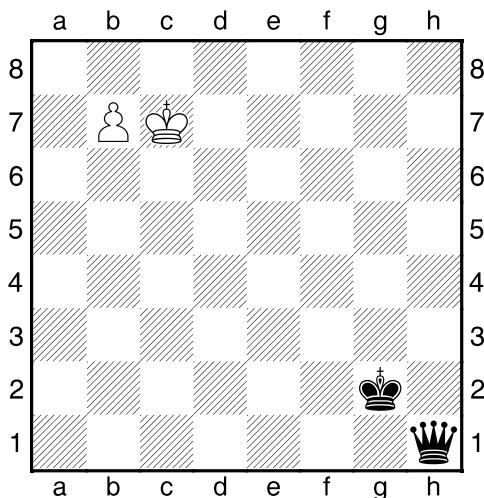
3. příklad Bílý na tahu (pš 5/57)



4. příklad Bílý na tahu (pš x046)

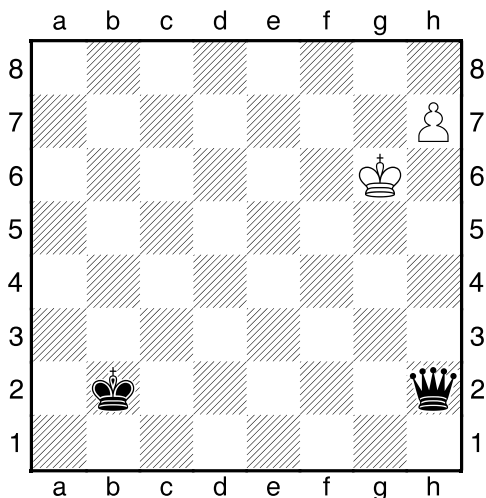


Černý na tahu



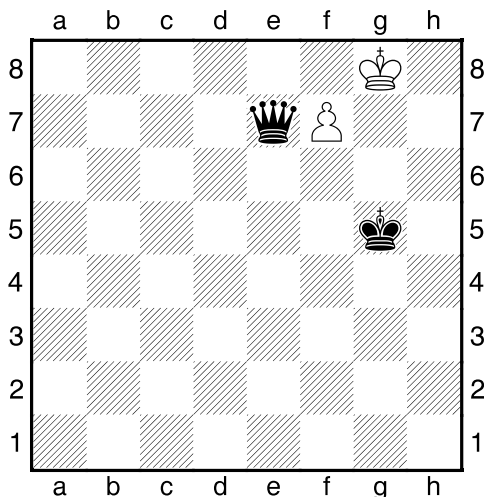
Co byste zahráli a jak partie dopadne?

Černý na tahu



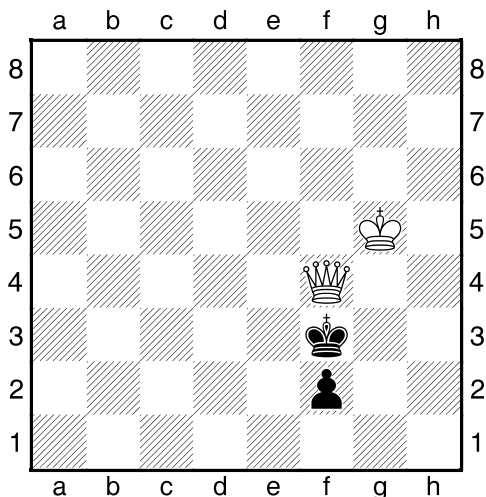
Co byste zahráli a jak partie dopadne?

Černý na tahu



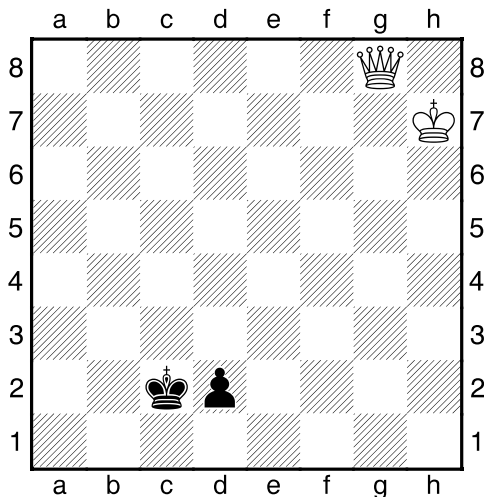
Co byste zahráli a jak partie dopadne?

Černý na tahu



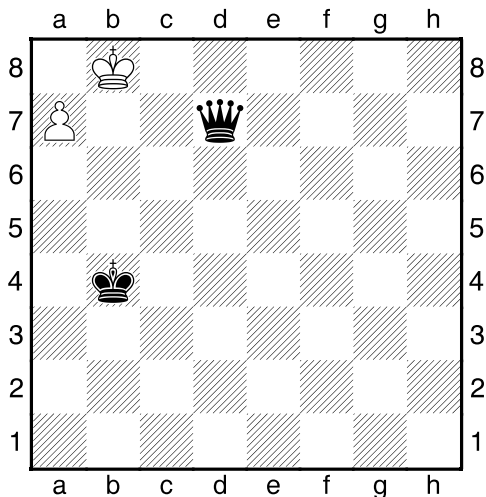
Co byste zahráli a jak partie dopadne?

Bílý na tahu



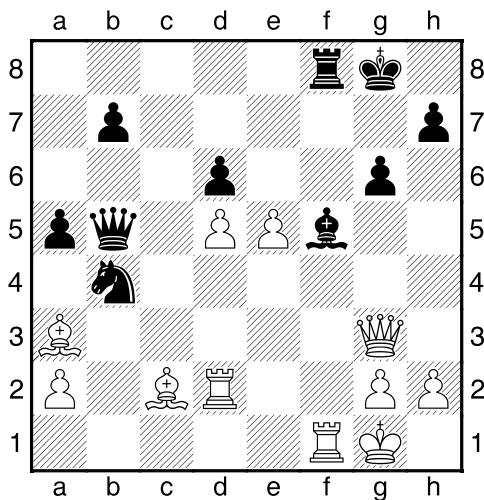
Co byste zahráli a jak partie dopadne?

Černý na tahu

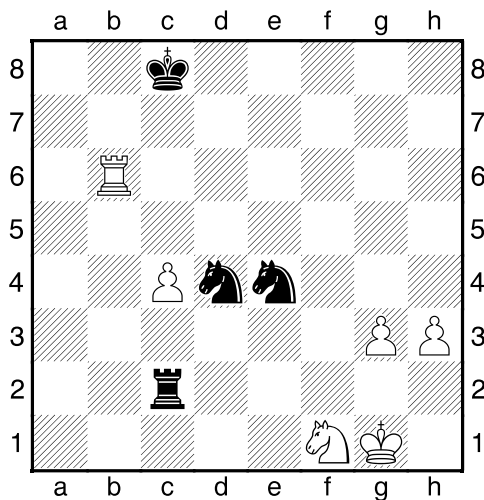


Co byste zahráli a jak partie dopadne?

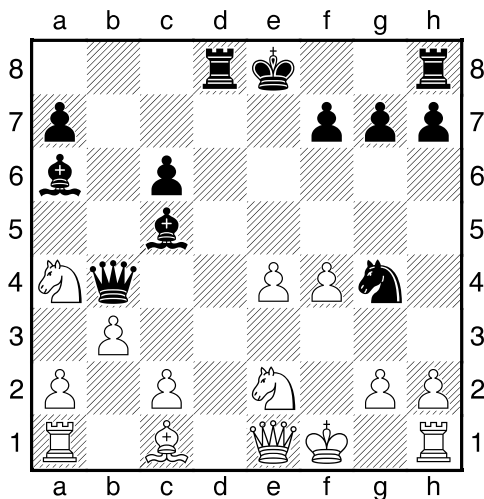
Černý na tahu



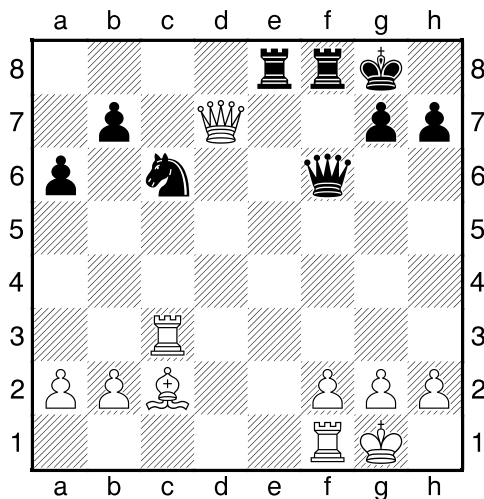
Černý na tahu



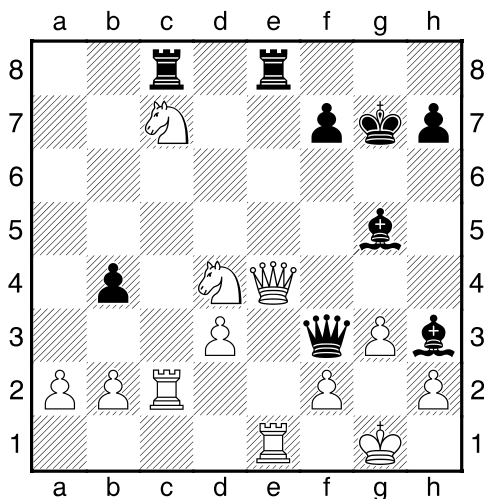
Černý na tahu



Černý na tahu



Černý na tahu



Černý na tahu

