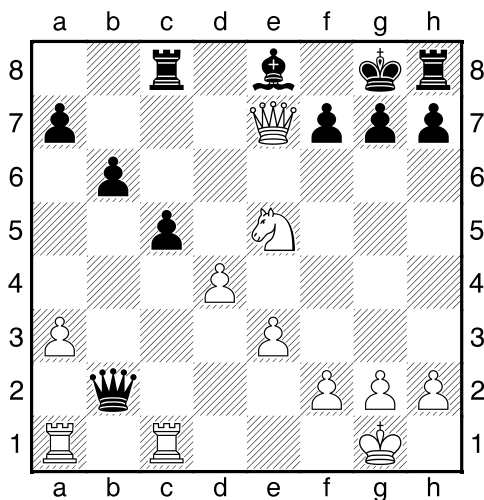
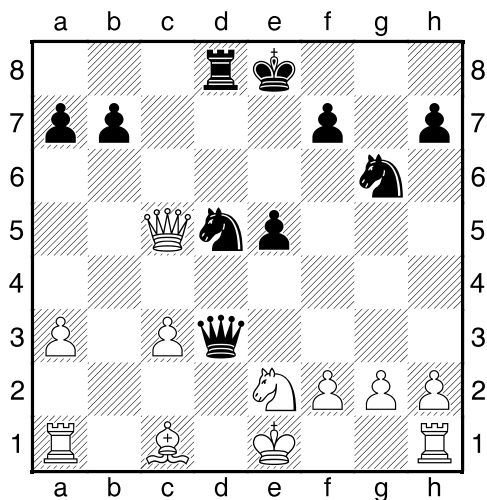


1.příklad Černý na tahu (pš x227)



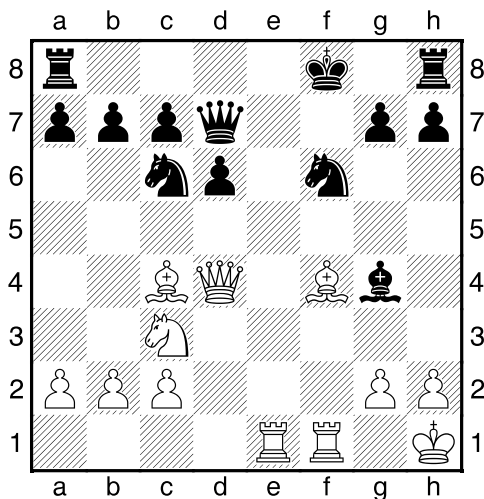
Černý zahrál 1...cxd4. Jak pokračoval bílý?

2.příklad Černý na tahu (pš x231)



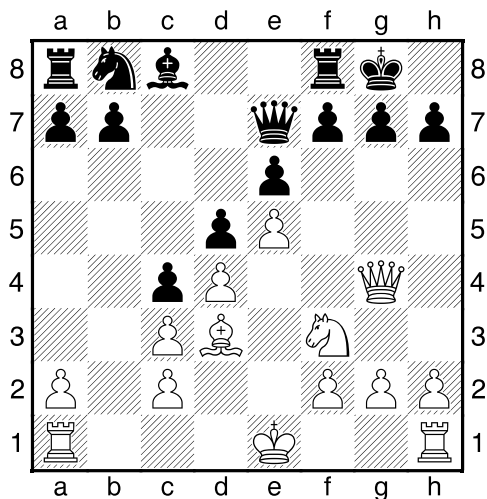
?

3.příklad Bílý na tahu (pš 3/311)



?

4.příklad Bílý na tahu (pš 2/273)

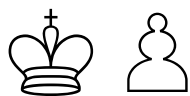


?

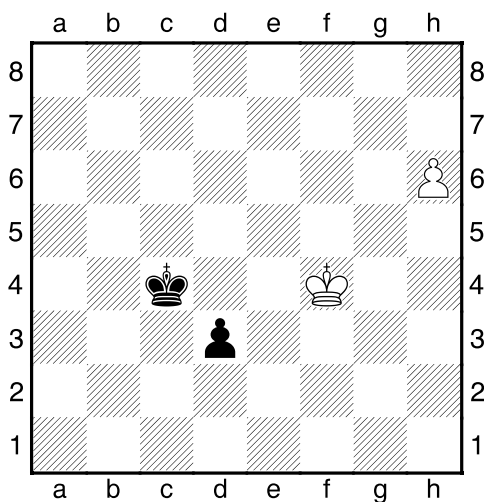
Taktika a koncovky

(ŠK Biolek)

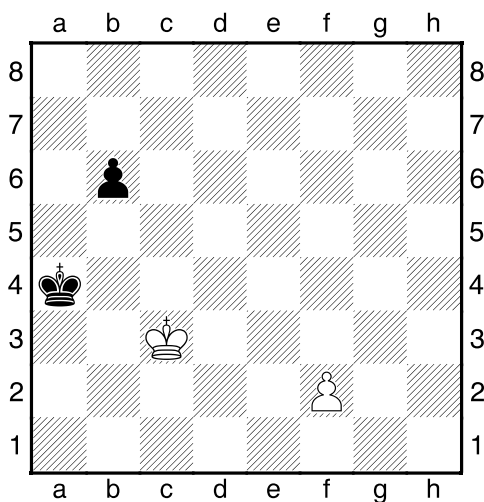
!!! Pod každý diagram napište první tah a jak partie dopadne !!!



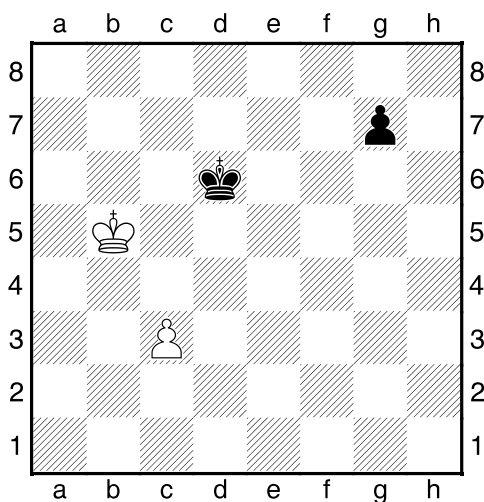
1. příklad Bílý na tahu



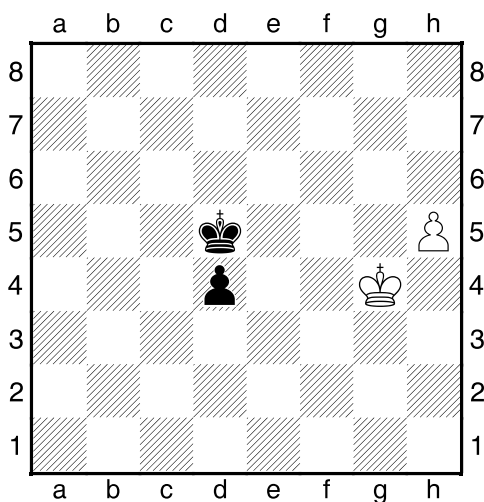
2. příklad Bílý na tahu



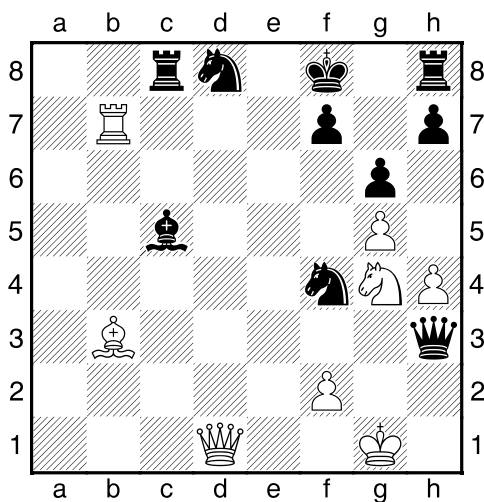
3. příklad Černý na tahu



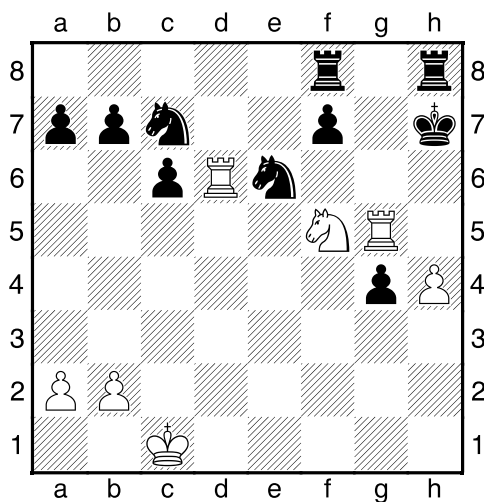
4. příklad Černý na tahu



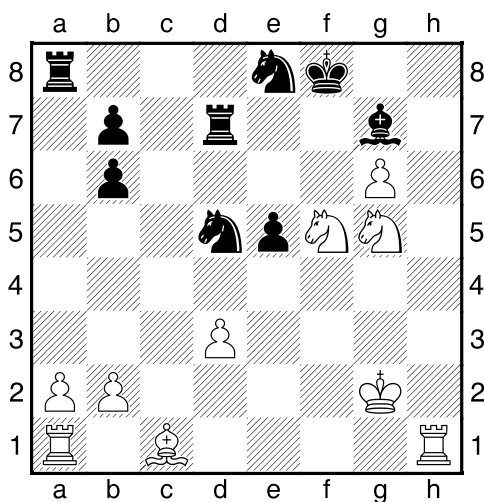
Bílý na tahu



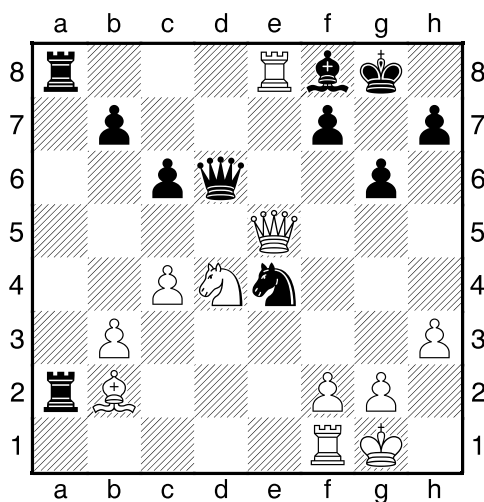
Bílý na tahu



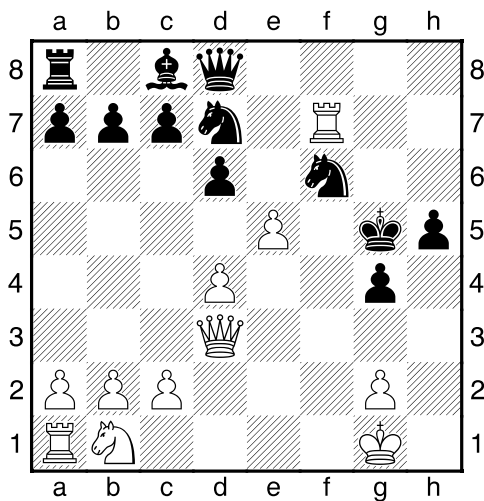
Bílý na tahu



Bílý na tahu



Bílý na tahu



Bílý na tahu

