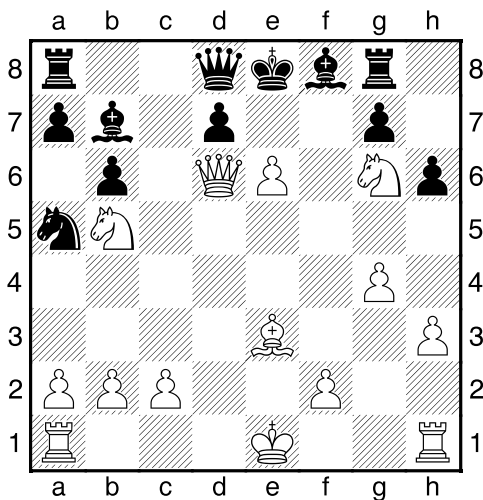
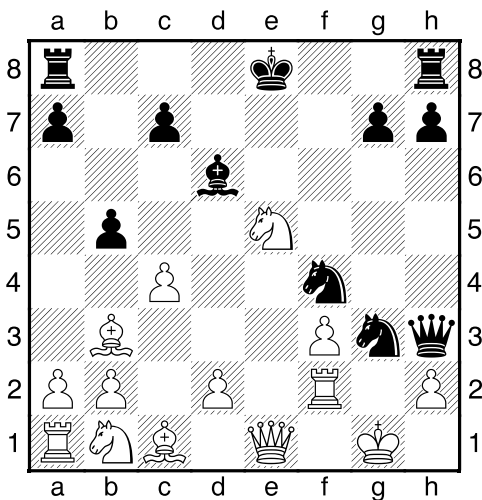


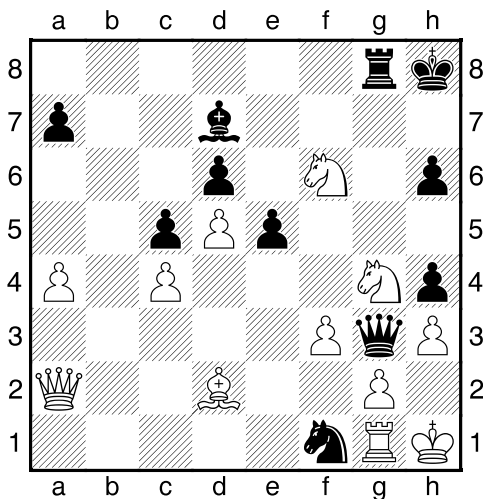
Bílý na tahu



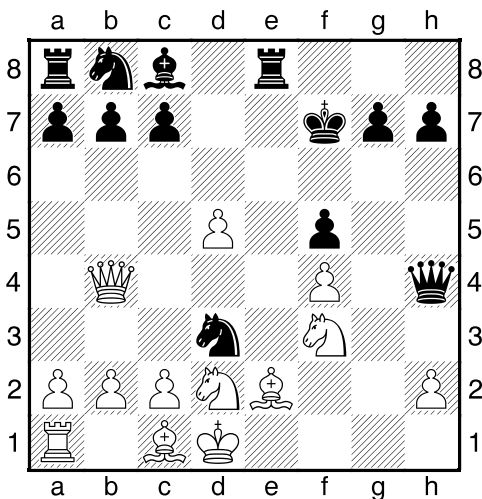
Černý na tahu



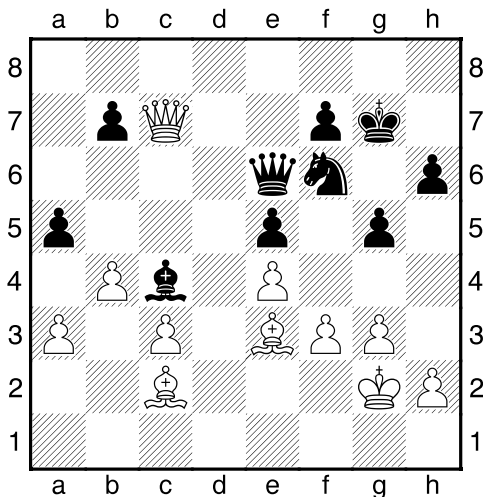
Černý na tahu



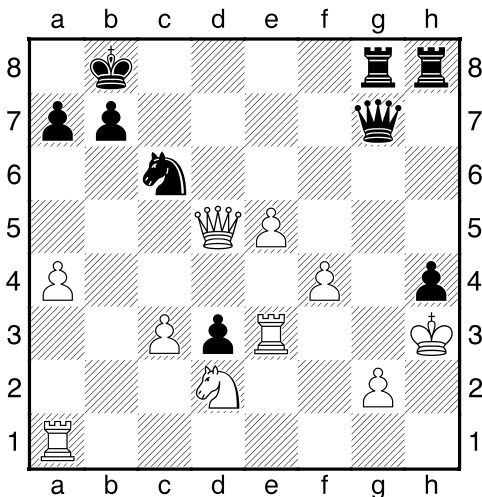
Černý na tahu



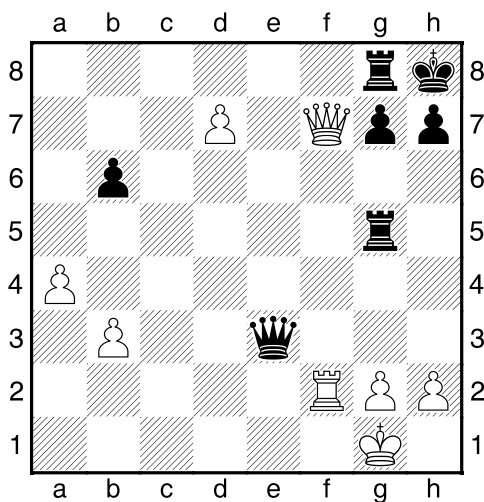
Černý na tahu



Černý na tahu

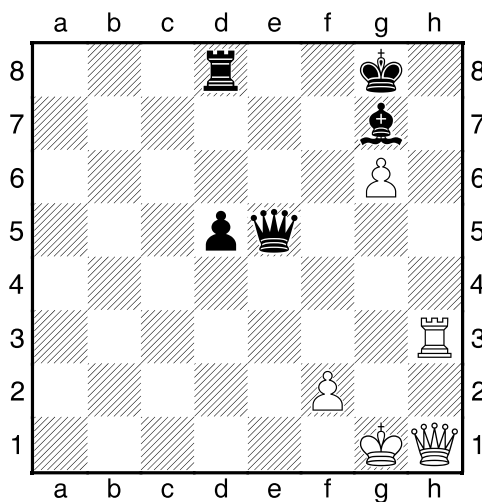


Bílý na tahu



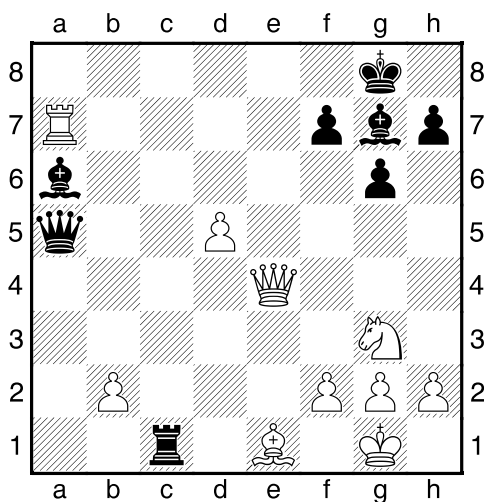
NÁPOVĚDA: 1.Dxg8+

Bílý na tahu



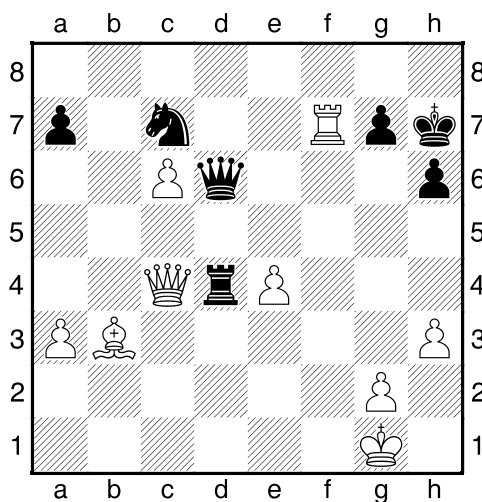
NÁPOVĚDA: 1.Vh8+

Bílý na tahu



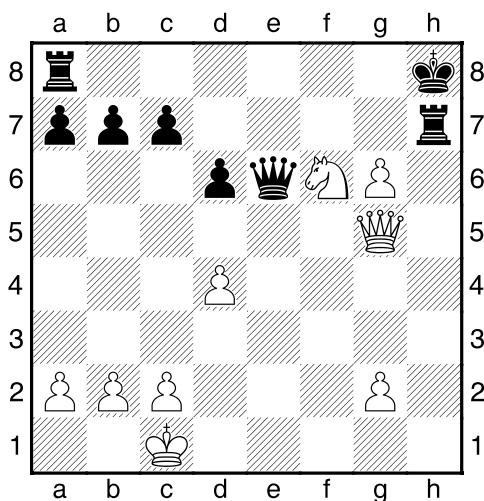
NÁPOVĚDA: 1.De8+

Bílý na tahu



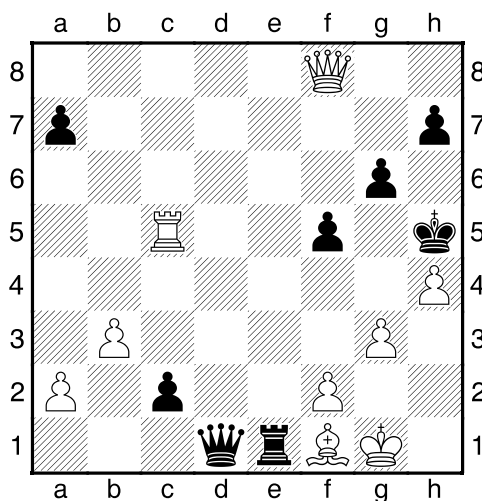
NÁPOVĚDA: 1.Vxg7+

Bílý na tahu



NÁPOVĚDA: 1.g7+

Bílý na tahu



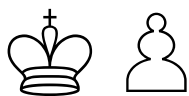
NÁPOVĚDA: 1.Vxf5+

**My-Chess 31 (Střední), 15.04.2024**

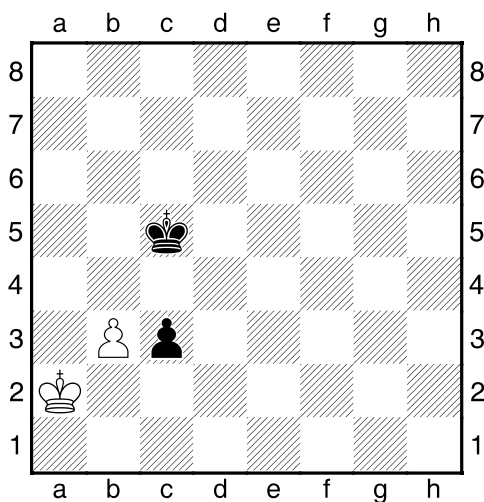
**K+p x K+p**  
(ŠK Biolek 008,2)

**!!! Pod každý diagram napište první tah a jak partie dopadne !!!**

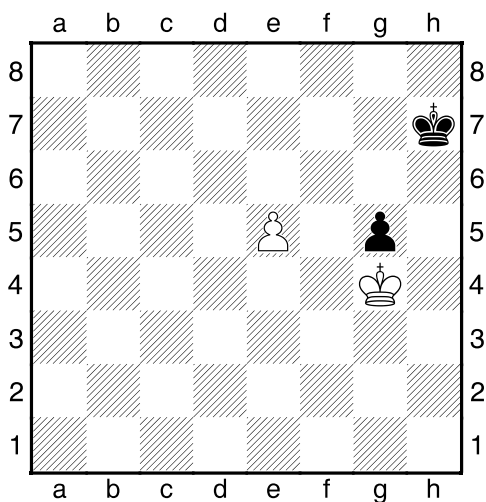
strana 3/3



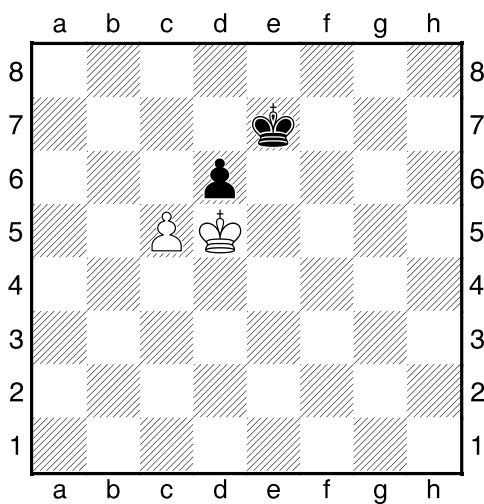
1. příklad Černý na tahu



2. příklad Bílý na tahu



3. příklad Bílý na tahu



4. příklad Černý na tahu

